

# OUR ECONOMIC IMPACT

In 2019-20, the University of Warwick's overall economic impact on the UK was **£3.3bn**, an increase of **14%** in real terms since 2016-17.

- ▶ Our **benefit to cost ratio** increased from 4.9:1 in 2016-17 to **5.8:1** in 2019-20\*.
- ▶ Our overall economic impact in the West Midlands was **over £1.15bn\*\***.
- ▶ We directly **employed 6,555 staff and supported a further 9,530 jobs** through our activities (72% of these jobs in the West Midlands).
- ▶ Our spending contributed **£477m to our region** and our international students **contributed £675m**.
- ▶ Our procurement contributed **£80m to Coventry and Warwickshire\*\*\***.

**£735m**

Impact generated by the spending of the University (£477m in West Midlands)



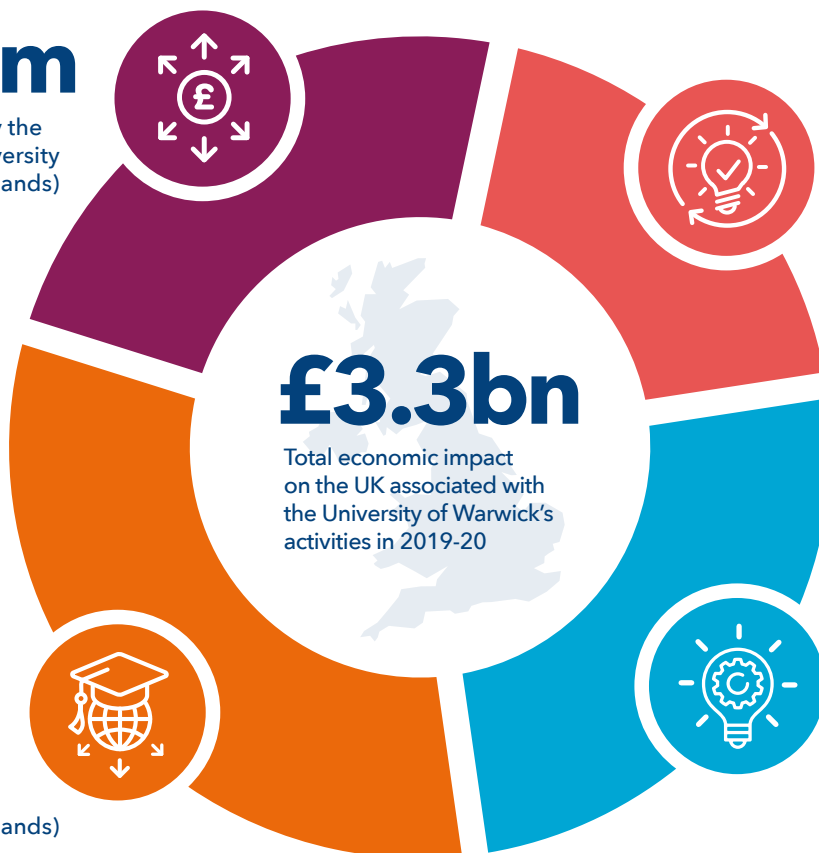
**£634m**

Impact of the University's research and knowledge exchange activities



**£3.3bn**

Total economic impact on the UK associated with the University of Warwick's activities in 2019-20



Impact of the University's educational exports (£675m in West Midlands)

**£1,048m**

**£841m**

Impact of the University's teaching and learning activities

\* this means that for every £1 spent by the University on operational costs, we generated £5.80 across the UK economy.

\*\* this is only the impact that can be geographically disaggregated.

\*\*\* this is included in the overall university expenditure and not an additional strand of impact.