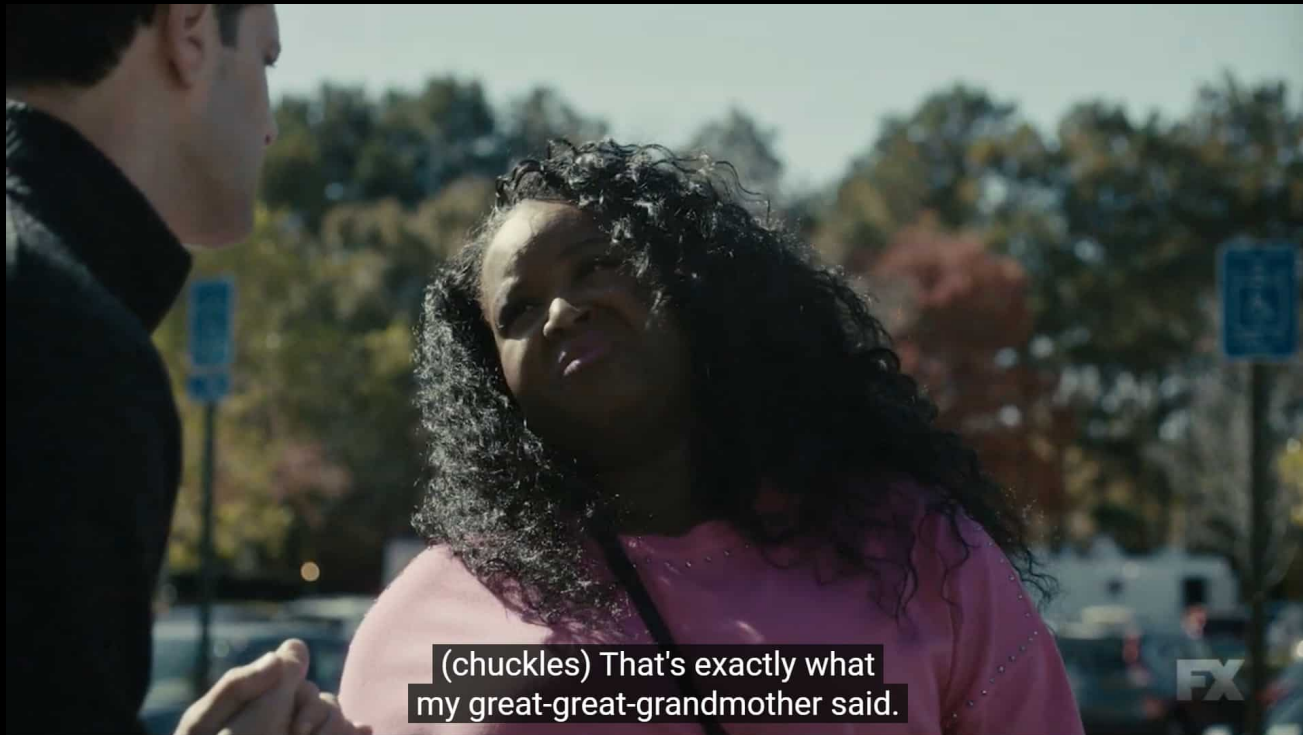
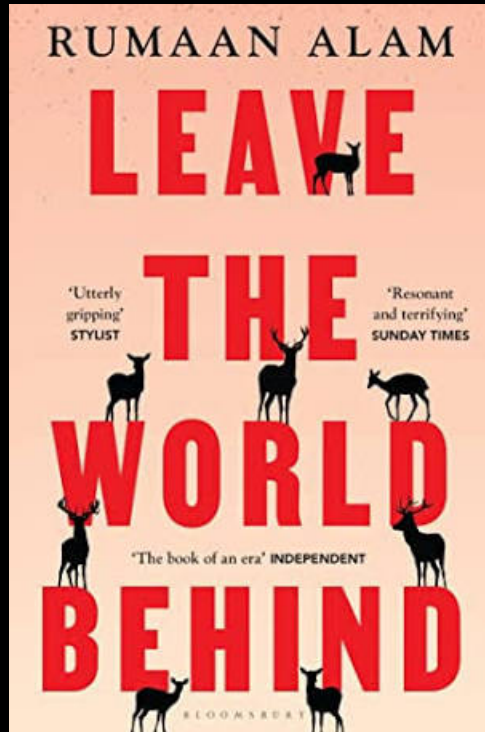


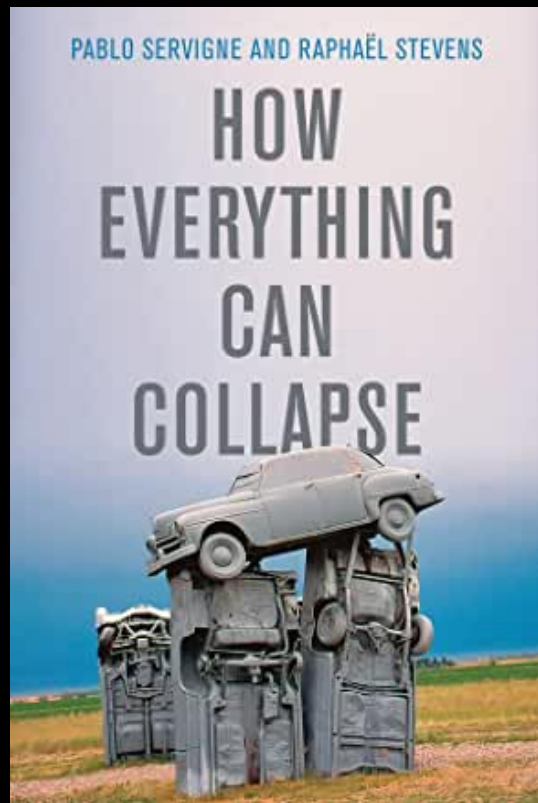
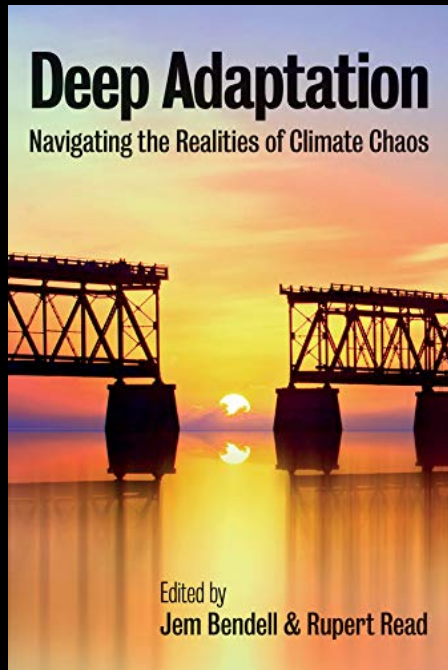
# The end of white privilege?



**Start reading now – it's long!**



# Collapsology



ESSAYS ON WAR AND CLIMATE CHANGE

# WE'RE DOOMED.

"Roy Scranton is one of the most gifted writers of his generation."  
—Amitav Ghosh, author of  
*The Great Derangement: Climate Change and the Unthinkable*



# NOW WHAT?

## ROY SCRANTON

AUTHOR OF *LEARNING TO DIE IN THE ANTHROPOCENE*



CULTURAL COMMENT

# WHAT IF WE STOPPED PRETENDING?

*The climate apocalypse is coming. To prepare for it, we need  
to admit that we can't prevent it.*

By Jonathan Franzen

September 8, 2019



A new agenda,

community and movement for Deep Adaptation to our predicament has been borne. It is comprised of people who believe that a climate-influenced collapse of societies in most parts of the world in the coming decades is either likely, inevitable or already unfolding.

**Deep Adaptation:  
A Map for Navigating Climate Tragedy**

IFLAS Occasional Paper 2

[www.iflas.info](http://www.iflas.info)

Professor Jem Bendell BA (Hons) PhD

Originally Published July 27<sup>th</sup> 2018.

Revised 2<sup>nd</sup> Edition Released July 27<sup>th</sup> 2020.

<https://www.lifeworth.com/deepadaptation.pdf>



**The crisis of a white,  
professional-  
managerial middle  
class experience  
decreasing class/status  
power...**

**Every apocalyptic  
narrative is equally a  
post-apocalyptic  
narrative (and vice-  
versa)**



**Every apoc/postapoc narrative is fundamentally a tale about a crisis of social reproduction (of class relations registered through sex/gender; race-ethnicity; normality/deviancy; civilization/"barbarism")**

**Citizen subject vs. social death of consignment to status of object**

**Every apoc/postapoc narrative may use  
“the real” events of  
ecological/epidemiological/energy  
regime collapse to convey crisis of  
capitalist class relations of exploitation  
and extraction, but...**

**all apocalyptic crises/catalysts  
are socially/politically  
determined more than they  
are “merely evidentiary.”**

*Leaving the World Behind:*  
Represents crisis as threat  
to nuclear family;  
motherhood (as  
“innocent” domain of  
privilege w/o patriarchal  
profiteering,

**and “irrational” quasi-  
apocalyptic event.**





"Turbid, aching and razor sharp, *Want* is a beautiful book."  
—Emma Cline, *New York Times* bestselling author of *The Girls*

# Want

A Novel

Lynn Steger Strong

**The Freudian primal scene:  
the child sees “castrated  
mom” and entry into  
sex/gender structure**

**The Lacanian mirror scene:  
the child sees reflection trying to  
stand up and falls**

**Entry into language**

**(earlier metaphor- highway driving**

**Alam-ian scene:**

**“home invasion” perceived by whites**

**becomes realization of racialized class decline.**

**Clay and Amanda realize that the Washingtons are wealthier, higher status networks (Dalton), and “better” inheritors of Eurocentric classical inheritance.**



**Clay and Amanda are not as wealthy as they believe they should be, but**

**Cocoon themselves in**

**eroticized brand consumption**

**Assumed to lead to "safe spaces"**

**[car/private residence]**

**Yet, there are not the inheritors/owners of power, they are only “renting” it – their time is over.**

**They reside in “safety” of purchasing/internet, but they’re the “dead on holiday.”**

**What if the nation's "better" founder  
was not**

**George Washington, slave-owner, but**

**George Washington, descendent of  
slaves?**

**Not “fear of Black Planet”  
(violent upheaval), so much as**

**“white extinction” made safe to  
express as unarticulated “event,”  
weird noise (cracking the glass  
[ceiling], and zombie mass of animals**

**Alam represents apocalypse of a world left behind in blank, creepy prose to ease the viewer into consideration of social change.**



**What if generational/social reproduction “white hope” (Archie) had to experience the social death of not being able to be the first to express himself (loss of teeth) as historically has been the experience of BIPOC/BAME?**

**Chart out responses**

**Contractor – (MAGA) gun up/isolate**

**Rose – take over someone else's home  
(settler imperialism – emptiness must  
mean free to take over, cf. *Severance*)**

**Comparison/contrast:**

***Severance* (individual)**

***LtWB* - "imperial nostalgia" of right to consume and nuclear family.**

*What is message to (different kinds of)  
Readers?*

*Discuss.*