

Introduction

Warwickshire, like many other counties in Britain, is no longer covered with its original vegetation. The countryside that we see today is the result of thousands of years of occupancy by people. Humankind has altered the landscape to suit its own needs. It is now a mosaic of vegetation ranging from the entirely artificial (such as agricultural fields and plantation woodlands) to modified semi-natural habitats (such as flowering meadows and ancient woodlands). There are no truly 'wild places' left in Warwickshire. But for the dedicated naturalist, or the person who just wants to take a pleasant and peaceful stroll through the countryside, there are some places that are 'wilder' than others. It is in these places that plentiful wildlife can still be found.

We have written this book to help you explore the top fifteen wildlife sites in the county, and learn about the different habitats associated with them. For ten of the sites we have given details of how to get there, but have left you to explore on your own. We have also given guidance on the specialities that may be seen during different times of the year. For five other sites, we have provided detailed guided walks, pointing out aspects of the natural history along the way. By providing this variety we hope to include people who enjoy a simple walk in the countryside, the novice in the field and the Warwickshire wildlife expert who may find some new discoveries in their county. In the gazetteer, we have listed an additional fifty sites in Warwickshire, with their main groups of interest, for those who like to explore the countryside in more depth. Details of the different sites referenced in the text can be found in the gazetteer.

To achieve clarity when referring to species we have capitalised the names of individual species but not those of collections of species. For example the Tawny Owl is one of several owls found in Warwickshire, the other owls being the Barn Owl, Short-eared Owl, Long-eared Owl and Little Owl.

We hope that you enjoy reading this book as much as we have enjoyed writing it. Happy exploring!

Habitats of Warwickshire

Warwickshire has a wide range of habitats. These include various forms of wetland (e.g. rivers, streams, ponds, lakes, canals and marshes), grasslands (e.g. 'improved' grassland, pasture, damp meadows, and tall herb), woodlands (e.g. scrub, willow/alder carr, ancient woodland and plantation woodland) and urban habitat (e.g. post industrial, parks, recreational areas and gardens). Many of these habitats contain an astonishing diversity of plants and animals. However these species are not randomly distributed but are often found in 'groups' of associated flora and fauna. The same (or similar) species occur wherever the same physical conditions exist and form distinctive living communities within each habitat type. This chapter describes the major types of habitat that can be found in Warwickshire, and some of the plants and animals that are associated with them.

Wetlands

Rivers and Streams

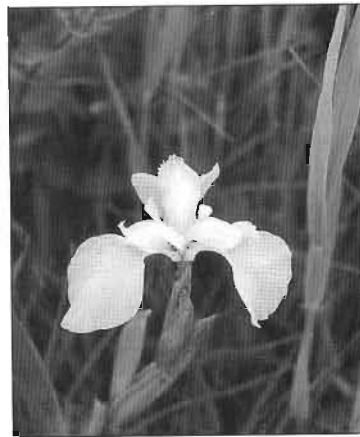
Rivers and streams are important freshwater habitats for many species of flora and fauna. The variety of animals and plants found in them is affected by the nature of the landscape that the water passes through, the physical structure of the river or stream (including the shape of its banks and the nature of the material present on the bottom) and the rate at which water flows in it.



Slow flowing rivers with shallow and heavily vegetated banks are often good places to see a range of damselflies and dragonflies

In the past many of our rivers have suffered quite badly when we have tried to change their direction and the rate of water flow in them. We have straightened, deepened and widened them, mostly to control their natural flooding patterns and their influence over the land around them. Such action has done much to change the characters of our rivers and has drastically lessened their value for wildlife. However, attitudes are changing and national projects now exist which aim to restore parts of our rivers back to a more natural state. The best rivers are those that have a diverse structure, with some fast-flowing shallow riffles but also deep pools and eddies. Good examples of these include the River Avon - especially in the Stoneleigh area, the River Arrow in the west of the county, and the River Sowe which flows through the city of Coventry.

The structure of the river bank is also important and those rivers with the most diverse types of bank are often the best for wildlife. Steep vertical banks are ideal places for Kingfishers to excavate their nest tunnels. At the other extreme, shallow banks with a low gradient are excellent for a wide range of marginal plants such as sedges, rushes, reeds, Purple Loosestrife and Yellow Flag. These plants in turn allow the aquatic nymph stages of insects like the Banded Demoiselle and Brown Hawker dragonfly to haul themselves from the water and change into adult flying insects.



Yellow Flag

Our rivers are inhabited by large numbers of fish, including Gudgeon, Chub, Dace, Roach, Rudd and Barbel. These provide food for birds like the Grey Heron, Little Grebe and Cormorant. Fish are also the main food of the Otter, which is thankfully making a slow but steady comeback into our rivers from the west. This charming animal has been recently seen at Brandon Marsh Nature Reserve, just to the south-east of Coventry.

Ponds and Lakes

Ponds are widely distributed throughout Warwickshire but appear to have suffered a general decline in both quantity and quality over the last century. They were once common, especially in agricultural land, and played an important role in the watering of domestic life-stock. These days they are less important as watering holes but they do play an enormous role in safe-guarding our populations of aquatic plants and animals, especially all of our amphibians. A great variety of aquatic and terrestrial plants occur in and around ponds, including the common Canadian

Waterweed, Water Plantain and Amphibious Bistort. As well as frogs, toads and newts, the harmless Grass Snake is often associated with ponds, and is a very good swimmer. It is recognised by its yellow or cream coloured collar over an olive-green body. It is not as common as it once was, but it is still possible to encounter some very large specimens of Grass Snake, up to two metres or so in length. In addition ponds are refuges for many insects, including dragonflies and damselflies, both of which require water to complete their life cycles. Southern Hawker and Emperor dragonflies and Common Blue Damselflies are commonly seen flying above and resting on vegetation beside and emerging from ponds.



Coombe Lake was created in the 1770s by Lancelot 'Capability' Brown by the simple method of damming the Smite Brook

Ponds need careful and consistent management to remain good habitats for wildlife, as they can soon become clogged with aquatic vegetation, turn into marsh and then gradually dry out. One positive aspect of many new building developments (such as around the grounds of the University of Warwick) is that new ponds are often created as ornamental water features. With forethought and care many of these can be turned into wildlife havens, helping to offset the loss of more natural sites.

There are no large naturally occurring lakes in Warwickshire. However there are a small number of old man-made lakes in deer parks and private estates. An excellent example can be found at Coombe Abbey Country Park. Lakes such as these are very rich in wildlife. They have shallow banks which are home to many emergent and marginal wetland plants. These shallows also act as nurseries and

feeding places for many species of fish. It is therefore no accident that Coombe is the home to the largest heronry in Warwickshire.

Man-made lakes also come in the form of reservoirs, and increasingly these days, as flooded sand or gravel pits. Fine examples of these can be seen at Shustoke Reservoir, Brandon Marsh Nature Reserve and Ryton Pools Country Park. Draycote Reservoir is the largest reservoir in the county and like all large areas of water, is attractive to birds. Many of these places are thus important sites for water birds such as swans, geese, ducks, grebes and gulls, both as wintering sites and as areas for breeding to take place in the summer.

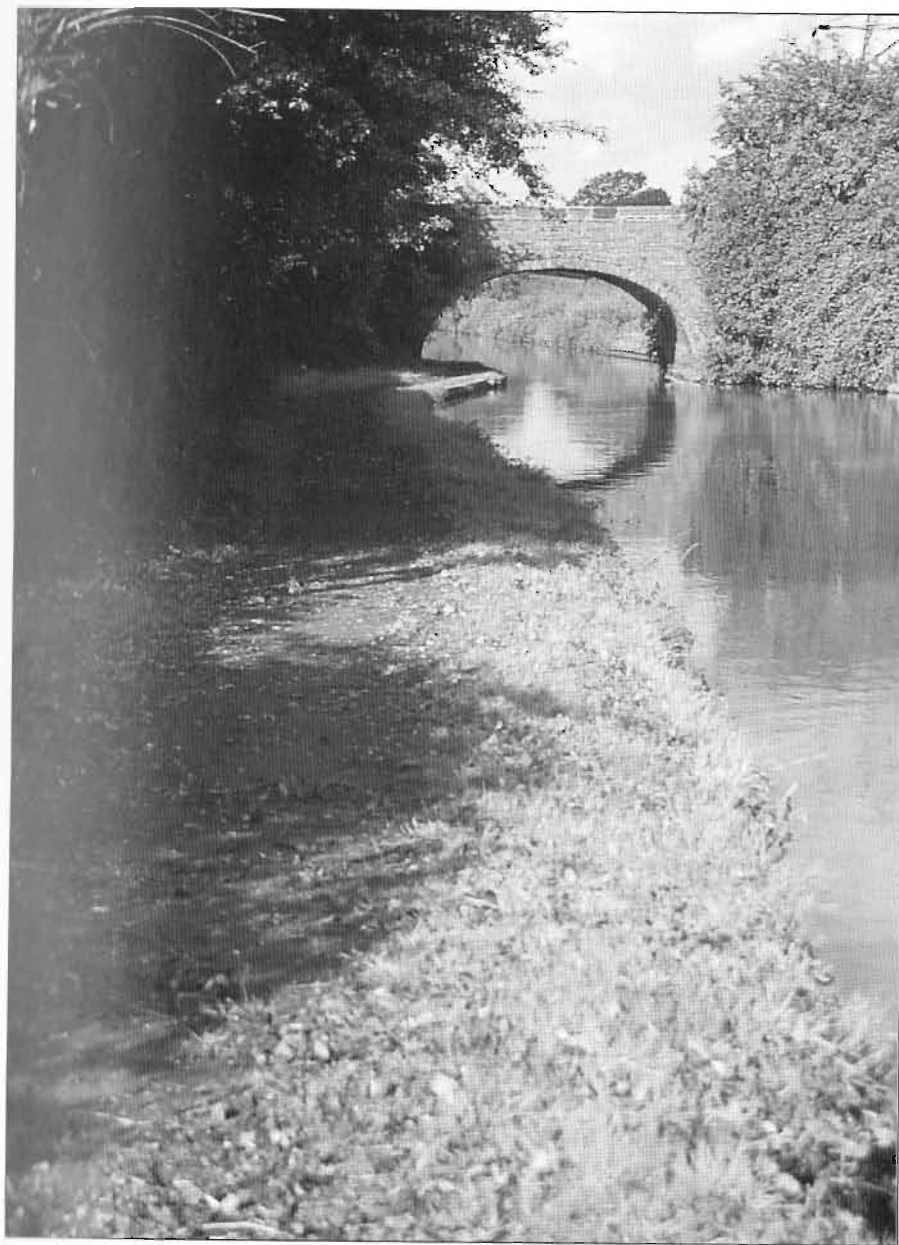


The large pool at Ryton Pools Country Park is a popular place for both the birds and public

Canals

Canals are artificial waterways that were constructed for various functions including navigation, irrigation and water power. They resemble lakes and ponds rather than rivers in the types of plants and animals that are found in them, because of their slower water flow. Warwickshire is traversed by a number of canals which have been with us for over a century. These include the Coventry Canal, the Oxford Canal, the Stratford-on-Avon Canal and the Grand Union Canal. Many of these penetrate the hearts of Warwickshire's major cities as well as traversing the countryside.

Fish that are often found in canals include Pike, Gudgeon, Roach and Tench. Great Crested Newts, Smooth Newts, the Common Frog and Common Toad also



The Oxford Canal beside Newbold Quarry Park

occur in this habitat, the latter three being much more common. Coventry Canal, in particular, has good populations of the Smooth Newt.

Many more species live in the range of habitats that can be found near the tow path beside canals. Moorhens and Kingfishers are often seen here. During the harsher climate of the winter, Grey Herons are also regularly seen fishing near the unfrozen areas under canal bridges. A less easily observed inhabitant is the Water Vole. This is a small rodent that is often confused with the Brown Rat (though the water vole has none of the bad habits that are associated with the rat). It is often seen swimming strongly along the canal to take refuge in one of its many waterside tunnels on the bank.

Marshes

When ponds and pools become choked with vegetation they eventually dry out and change into marsh. This happens because the dead leaves and stalks of plants gradually build up in ponds until the standing water becomes very shallow. It is then that plants like Common Reed or Reedmace will take over, and often marshlands are entirely composed of one or two species like these. Marshes have become rarer these days as they are often drained to make way for development or agricultural reclamation. They have a very distinct flora and fauna, and several species, such as some of the Wainscot moths, are found in no other habitat. Many other animals and birds, including the Reed Warbler, Sedge Warbler and Water Rail, breed in reed-beds. Cuckoos are attracted to reed-beds to lay their eggs in the nests of warblers. Birds of prey, such as Marsh and Hen Harriers, and the Short-eared Owl, can often be seen quartering large expanses of marshland, especially in the winter, for small mammals and birds. Good areas of marsh occur at Whitacre Heath Nature Reserve and Kingsbury Water Park, located in the Tame Valley in the north of Warwickshire.



Often mistakenly called 'Bullrushes' these plants are in fact Reedmace, and are typical of marshy areas

Grasslands

Meadows and Calcareous Grassland

At one time the countryside of Warwickshire was filled with flowering meadows. These were ablaze with the colour of numerous wild flower species and hummed with insect and bird life. Such diverse areas of grassland were created through the traditional management practice of hay making, which provided food for livestock in the winter. Hay meadows were not fertilised in any way. Indeed it was the poor quality of the soil that resulted in the diversity of flowers and grasses.

Today only a few old meadows of outstanding quality remain in Warwickshire. These have survived being 'improved' for animal grazing or silage production and the consequent treatment by fertilisers and herbicides. Draycote Meadows is probably the finest of these and contains thousands of Green-winged Orchids in early summer. These orchids put on a magnificent display for visitors, alongside other rare plants like Yellow Rattle, Cowslip and Adder's Tongue Fern. Draycote is also the last remaining site in the county for a fern with the splendid name of Moonwort. Other, smaller, meadows still survive in odd corners, like the tiny Harvest Hill Nature Reserve to the north-west of Coventry (where Wild Daffodils can still be seen in large numbers in spring), Deans Green and Stonebridge Meadows Local Nature Reserve. The latter site has Harebell and many other uncommon plants growing in acid grassland.



Wild Daffodils are smaller and more delicate than cultivated varieties. They can be seen in large numbers at Harvest Hill Nature Reserve to the north-west of Coventry

Spectacular areas of wild flowers can also be seen on calcareous grassland. They grow on lime-rich soils over chalk or in old limestone quarries such as can be found at Ufton Fields Nature Reserve and Country Park. Here Yellow Wort, Ox-eye Daisy, Kidney Vetch and Wild Basil grow alongside six species of Orchid. Butterflies abound at Ufton, especially the Marbled White in July and Small Blue, Dingy and Grizzled Skippers in May and June. These beautiful insects were once a very common sight in our countryside but have declined in numbers with the meadows where they once thrived. The most typical butterfly of old meadows is the Meadow Brown. This common and handsome insect feeds as a caterpillar on grasses. Other inhabitants of meadows during the summer include brightly-coloured day-flying moths like the burnets and the Cinnabar, and birds like the wonderfully melodious Skylark.



Purple Loosestrife is a beautiful native plant that often grows by the edges of rivers or in damp meadows

Damp Meadows

Damp meadows or 'water meadows' are often flooded in the winter and they may be several metres under water at times, forming small lakes. The flora of these meadows is heavily influenced by such periods of inundation, and comprise species that are well adapted to these conditions such as rushes, sedges, Purple Loosestrife and Meadowswet - a tall plant with creamy fragrant flower heads. Damp meadows are also a haven for various types of bird, especially in the winter. Large flocks of Lapwings and Golden Plover will often frequent this habitat before it becomes flooded. When covered with water, birds such as geese and ducks can be found, along with large flocks of Black-headed, Common, Herring and Lesser Black-backed Gulls. Wading birds such as Green and Common Sandpipers, Snipe and Redshank can sometimes be seen probing the soil for their invertebrate food along the shallower edges.

Damp meadows were once a common feature along the river valleys of Warwickshire. Although this habitat is less common today, an example can still be found at Welches Meadow Local Nature Reserve in Leamington.

'Improved' Grassland and Pasture

Many old meadows, whether damp, dry, neutral or calcareous, have been changed

beyond recognition by modern farming techniques. With the sole aim to increase their productivity for cattle and sheep grazing or silage, old meadows have been ploughed up and re-seeded with fast-growing grasses and treated with fertilisers and herbicides, producing vast areas of 'improved' grassland and pasture. In addition hedgerows have often been removed to increase the size of fields, so that modern machinery can move more easily in them, and the farmer can gain a few more square metres of productive farmland.

Most of our countryside is now made up of such grassland. On the surface it may appear to be rich and green. However such fields of improved meadow and pasture are in fact very poor for wildlife and have frequently been referred to as 'green deserts' by nature conservationists. The wildlife commonly seen in this type of habitat includes hedgerow birds such as the Yellowhammer, Chaffinch, Blackbird and Woodpigeon, and animals that take refuge in the remaining ancient hedgerows, for example Foxes, Rabbits and Field Voles (especially along the field margin if the grass is left uncut). Ancient hedgerows are often the last refuges of wild flowers, birds and other animals in such an increasingly sterile countryside. They are brimming with food for wildlife, for example flowers bursting with nectar and heavy crops of nuts, berries and seeds. Sadly, the hedges that are left often suffer from herbicidal and insecticide sprays that drift onto them when the fields are treated on windy days.



On the surface improved grasslands look green and inviting, but they are generally empty of wildlife compared to more traditionally managed areas such as meadows

Recent legislation may protect ancient hedgerows from further losses, and a hint of good news is that many hedges are being replanted, though these will take a very long time to mature enough to be good wildlife habitat.



Common Ragwort is a typical plant of the tall herb community and buzzes with insects. Here a Meadow Brown butterfly nectars on ragwort flowers while a Cinnabar moth caterpillar eats its leaves

They also sustain high populations of small mammals like the Field Vole and Harvest Mouse. These small birds and mammals in turn attract the attentions of predatory birds such as the Kestrel. This bird is a familiar sight in the Warwickshire countryside, often along roadsides, seeming to hang motionless in the air as it scans the ground below for its prey.

Tall Herb

Tall herb can be found almost anywhere and is a much underrated habitat for wildlife. Tall herb describes the type of vegetation that grows on waste land, at the bottom of hedgerows or along roads, railways or riversides. The plants that can be found in these habitats vary greatly according to the soil type, but commonly found species include Common Nettle, docks, thistles and ragworts. These sites often look untidy during the latter part of the year, when the plants - which are mostly annuals - begin to die down. In contrast, in the spring and summer they can be packed with flowers and buzzing with insect life. Tall herbs usually produce vast quantities of seeds and these in turn act as a magnet to draw in large numbers of seed-eating birds like Tree Sparrows, finches and buntings.

Woodlands

Scrub and Willow/Alder Carr

In the process of natural vegetation succession, the fine grasses and flowering plants of grassland and tall herb communities are replaced with taller more woody species of plants like Elder, Blackthorn and hawthorn. In time these woody plants will grow taller and thicker and will shade out the other plants completely until they form a thicket-like habitat, known as scrub. Scrub is the precursor to mature woodland and the plants that make up scrub are vigorous. Even wetland areas can be gradually shaded out by this habitat, (although this is often by species of shrubs and trees that are more tolerant of damp soil, like Alder or the various types of willow). When scrub is formed on damp soil it is known as 'carr'. Scrub and carr are great habitats for many creatures, supplying them with nutritious food supplies in the form of seeds and fruits such as crab apples, rose-hips and haws, and the berries of Bramble, Elder, Rowan, Holly and Guelder Rose. During the winter huge flocks of Fieldfares, Redwings, Siskins and Redpolls migrate from the colder temperatures in the north of Europe and descend on patches of scrub in search of this abundant food supply. In some years they are joined by small numbers of the very handsome Waxwing.

Alder 'cones' which look very much like miniature pine cones, are eagerly sought by birds, at first for their seeds, then later because they shelter large numbers



As one of the earliest shrubs to come into flower, Blackthorn is a magnet to numerous kinds of insects that nectar on its fragrant blossoms

of insects. In spring, hawthorn and Blackthorn trees become heavy with fragrant blossom and these are the favourite nectar sources for early-flying insects. During the summer the impenetrable, and often thorny thickets are a popular place for birds to build their nests.

Scrub is a fairly common habitat in many parts of Warwickshire and can be found on the edges of woods and in other areas where active management of the land has stopped. The 'old meadows' in Ryton Wood Nature Reserve are formed by scrub that has re-colonised a patch of the woodland that was once cleared for agriculture. It is believed that this area was abandoned as farmland during the time of the 'Black Death' in the 14th century. Good sites to see Willow carr include Brandon Marsh and Whitacre Heath Nature Reserves. An excellent area of mature Alder carr can be found at Stonebridge Meadows Nature Reserve to the south of Coventry.

Ancient Woodland

Nowadays, the old adage of 'leafy' Warwickshire is perhaps a misnomer. Less than three percent of the county is wooded, although half of this is ancient woodland. The term 'ancient semi-natural woodland' describes land that has borne trees since at least 1600 AD. Such woods have a great variety of wildlife compared to modern woodlands and plantations of exotic conifers. The ancient woodlands of Warwickshire are characterised by their plant species (which are themselves determined by the soil type), and the age structure of the species present in the wood. The latter feature is the result of previous and current woodland management (e.g. coppicing and woodland ride creation).

In the north-western half of the county, the soil is more acidic and less fertile, whereas in the south it is richer and more alkaline. This contrast causes a difference in woodland types. Woods in the north west are made up of Sessile and Pedunculate Oak, Small-leaved Lime and both Silver and Downy Birches. Rowan, Holly and Buckthorn make up the under storey. Examples of such woods include Ryton Wood, Piles Coppice, Clowes Wood and Crackley Wood. In the south Ash is



Yellow Archangel - an indicator species of ancient woodland

often the dominant species. Pedunculate Oak is less frequent, and Sessile Oak is absent. The shrub layer is made up of Dogwood, Hazel, Wayfaring Tree and Midland Hawthorn. Examples of such woods include Snitterfield Bushes and Hampton Wood.

The rich ground flora of ancient woodland is at its best in the spring. Carpets of Bluebells combine with patches of Wood Anemone, Wood Sorrel, Red Campion and Common Dog Violet to make a colourful display. Yellow Archangel, Lesser Celandine and Primrose add a dramatic contrast of form and colour. Lily-of-the-valley flourishes at Clowes wood, along with Common Cow-wheat and Bilberry. The woods of the south typically support a more diverse flora than those of the north-west, with the lime in the soil encouraging many orchids like the Early Purple Orchid which complements the Bluebells in many places.

As well as being home to a great variety of flora, ancient woodlands probably support a richer variety of animal life than any other British habitat. Species commonly encountered during the day include Sparrowhawk, Tawny Owl, Great Spotted and Green Woodpeckers, Treecreeper, Nuthatch, Blue, Great and Long Tailed Tits, Wren, Robin, Dunnock, Chaffinch, Bullfinch and Blackbird, Mole, Common and Pigmy Shrews, Rabbit, Red Fox, Grey Squirrel, Bank Vole, Wood Mouse and Chinese Muntjac Deer. Butterflies include the common Speckled Wood and the less common White Admiral.



The Common Shrew - this animal is a voracious eater consuming huge quantities of worms, beetles, caterpillars and woodlice



Ancient woodlands such as Ryton Wood Nature Reserve are one of the richest habitats for wildlife in the Warwickshire countryside and are a pleasure to walk through at any time of the year



In contrast to many ancient woodlands, conifer plantations such as this one are dark and gloomy and contain a small range of wildlife

Plantation Woodland

Plantation woodland can consist of broad-leaved woodland, coniferous woodland or a mixture of both. Many of the large birds and animals commonly seen in this type of habitat are the same as those seen in ancient woodland, since many are mobile and they will seek refuge in less diverse woodland. Plantations of exotic conifers are however generally poor in other forms of wildlife. Mature pines support a restricted range of birds including the Goldcrest and Coal Tit.

Many woodlands in Warwickshire have been recently planted. Unfortunately a large percentage of these contain non-native species to Britain, like pines, spruces and firs. These 'softwoods' grow far more quickly than native 'hardwoods' such as oak, and therefore provide a better commercial income for foresters. However, these introduced trees support a far less diverse fauna than do native trees and they are often planted so close together that they shade out many species of plant, especially those that require direct sunlight to grow. Pine needles are also very acidic and slowly acidify the ground, again to the detriment of many species that cannot survive on this type of soil.

Large numbers of native trees have also been planted in the county, not only as woodlands but along road-sides etc.. Although this is good for our wildlife, it will take many hundreds of years before they can support the numbers of species that ancient woodlands do. They can be seen as an investment in our future, and the future of the many species of flora and fauna that cannot survive without this habitat.

Urban Habitats

Post Industrial Sites

Post-industrial sites (also referred to as 'brown field' sites) include railway embankments, road verges, derelict industrial sites, slag heaps and waste land. Surprisingly, they are very rich in species diversity, containing many plants and animals that rely upon disturbed ground for their existence. Such species include 'vernal' or 'pioneer' plants that are the first to colonise disturbed areas, for example ragwort, thistles and docks. Many common species of insect are associated with these plants. Small mammals and birds are attracted by the seeds and fruits of the pioneer species and by the abundant insects and other invertebrates that are found there. Thus Wood Mouse, Field and Bank Voles, Woodpigeon, Collared Dove, Dunnock, Robin, Blackbird, Song and Mistle Thrushes, Great and Blue Tits, Wren, Magpie, Carrion Crow, Starling, House Sparrow, Chaffinch, Greenfinch, Linnet and Goldfinch are also commonly observed in these areas.

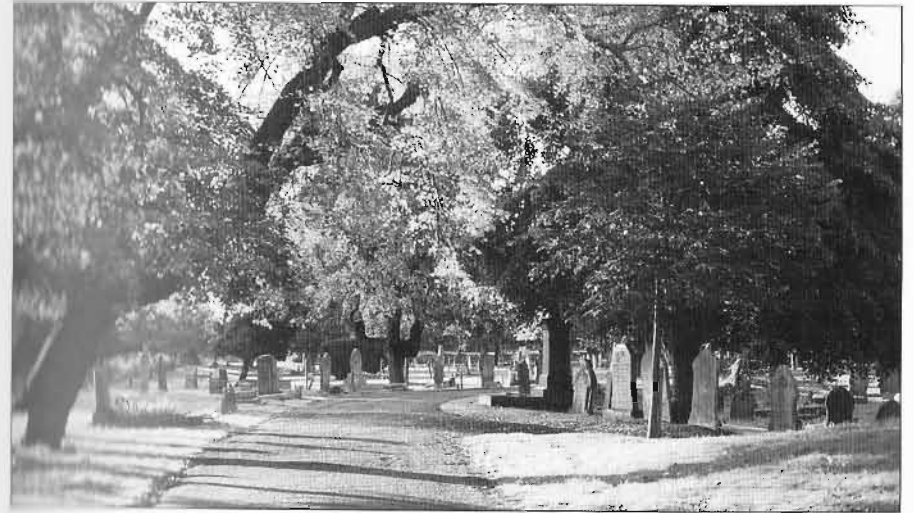


Clay Brooke Marsh

In the process of natural succession, such post industrial areas would gradually develop into woodland scrub and eventually into mature woodland. However such sites are frequently regarded as eye-sores or as a wasted land resource, and often disappear under new development. A prime example of a post industrial site in Warwickshire is Clay Brooke Marsh (once known as Herald Way Marsh) in Coventry. This is located on the site of former mine-workings and slag heaps but is currently home to many species of insect and bird, and even has wild orchids growing there.

Parks and Recreational Areas

Parks and other recreational areas are usually found in towns and cities and are a vital 'green-space', where people can get a taste of fresh air and peacefulness in the hubbub of modern day life. Many of these spaces are also vital for the survival of the wildlife species that make their home in our urban areas. Large mammals such as Rabbits, Grey Squirrels, Badgers and Red Foxes can be found even in the heart of our largest cities due in part to these green areas, along with spectacular birds such as woodpeckers, Jays and Sparrowhawks.



Old cemeteries such as this one at London Road in Coventry are quiet oases in the heart of suburban Warwickshire, not only for people but for wildlife too

At first glance many of these parks can often look like green deserts, with vast expanses of regularly mown amenity grassland. Yet most of them contain 'wild' corners that are inaccessible to the gang-mowers, where plants and animals can flourish in relative peace. Cemeteries are often managed less intensively than other public areas and are peaceful havens not only for wildlife but for people too. Many contain species such as Tawny Owls, bats and Spotted Flycatcher's - animals and birds that are more often associated with the countryside than towns. London Road Cemetery in Coventry is a good example and well worth a visit, especially on a warm sunny day in the summer.

Gardens

Gardens are a vast resource for wildlife. All sizes and types of gardens can be useful, from window boxes on tower blocks (where Kestrels have been known to nest), to

huge suburban gardens that contain copses of trees and wild-flower meadows. Garden flowers are visited by insects like Bumblebees, Honey Bees, wasps, hoverflies, moths and butterflies. In turn, the insects attract birds like the Wren, Dunnock and Robin into the garden. Even regularly mown lawns attract Blackbirds who feed on earthworms, and Starlings who unearth Leather-jackets (the grubs of Daddy-long-leg flies).

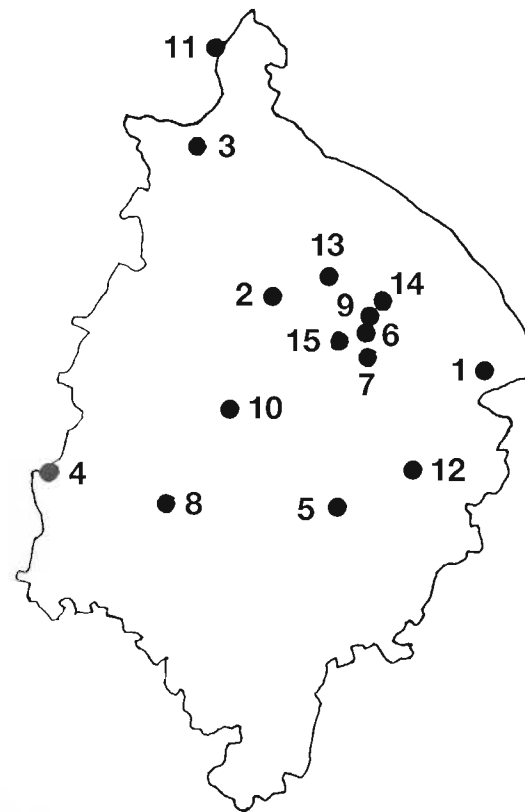
It is also likely that garden ponds have been instrumental in protecting our native amphibians, especially the Common Frog. As wild ponds have gradually disappeared from our countryside, garden ponds have stepped into the breach to help take their place.

Many people put food out for the birds in their gardens. This simple act has maintained the numbers of many birds like Blue and Great Tits, Greenfinches and Chaffinches that would otherwise perish in harsh winters. Other less common birds like Jays, Great Spotted Woodpeckers and Siskins have begun to learn that food supplies can be found in gardens, resulting in more frequent visits to these havens, much to the delight of their providers. If gardens are managed as 'wildlife gardens', they can supply refuges for wildlife even in the heart of our cities and immeasurable pleasure to their owners at the same time.



With a little thought and care a host of butterflies and other wildlife can be attracted to gardens, even in the heart of our cities. Here a beautiful Red Admiral is nectaring on a Buddleia bloom

Location Map of Sites and Walks in Warwickshire



- | | |
|-------------------------|-------------------------|
| 1. Ashlawn Cutting | 9. Brandon Wood |
| 2. Coundon Wedge | 10. Kenilworth Common |
| 3. Kingsbury Water Park | 11. Pooley Fields |
| 4. Rough Hill Wood | 12. Stockton Cutting |
| 5. Ufton Fields | 13. Wyken Slough |
| 6. Brandon Marsh | 14. Coombe Abbey |
| 7. Ryton Wood | 15. Stonebridge Meadows |
| 8. Snitterfield Bushes | |