

THEATRE AND PERFORMANCE STUDIES



SCHOOL OF CREATIVE
ARTS, PERFORMANCE AND
VISUAL CULTURES

UNDERGRADUATE PROGRAMMES


WARWICK
THE UNIVERSITY OF WARWICK

Kneehigh in association with Birmingham Repertory Theatre and Berkeley Repertory Theatre. 946: *The Amazing Story of Adolphus Tips*. Adapted by Michael Morpurgo and Emma Rice. Warwick Arts Centre November 2016. Photo: Steve Tanner / Kneehigh

4TH IN THE UK
FOR DRAMA

Dance and Cinematics (Complete University Guide 2023)

IN THE 2021 RESEARCH
EXCELLENCE FRAMEWORK,
THEATRE AND PERFORMANCE
STUDIES' SUBMISSION (UOA33)
WAS RATED AS

NO. 1 IN THE UK FOR
RESEARCH POWER

(Times Higher Education)

PERFORM IN ANY SPHERE

EMBRACE A KALEIDOSCOPE OF
OPPORTUNITIES TO EXAMINE,
CREATE AND QUESTION.

WHY STUDY THEATRE AND PERFORMANCE AT WARWICK?

Theatre and Performance Studies at Warwick takes pride in its national and international reputation for research and teaching excellence. As a student, you'll experience this first-hand.

Throughout your degree you'll be taught by world-leading scholars, industry professionals and artists who are passionate about the power of theatre and performance. You'll explore how – at different historical moments, in various places – drama, theatre and performance has been used to share stories, forge communities, make a stand, help people to remember, to laugh, to feel, to understand more deeply, and to change things.

You'll have the ability to shape your own distinctive degree, within a course that's designed to empower you to make choices and steer your own path. After a foundational first-year in which you take four core modules balancing study and practice, the second-year and third-year are comprised largely of optional modules. You can select from a wide range of modules designed by our diverse team of specialist staff, whose international and interdisciplinary experience is represented within the curriculum. Our teaching grows out of the cutting-edge research and practice

of our staff, with areas of expertise including applied and community theatres; theatre for social change; acting and performing; producing and administration; theatre history; Shakespeare in performance; popular, political and avant-garde theatres; forms of writing, directing and dramaturgy; theatre and national identities; contemporary British, European, and North American theatres; theatre in the African context; postcolonial and intercultural theatre and performance; theatre and representations of mental health; performing gender and sexuality; performance and cities; theatre production in digital environments, video and marketing and audience development. You'll also have the opportunity to undertake a placement with a company or organisation in the theatre and performing arts industry.

You'll join current staff and students in fostering a strong sense of community, and you'll work as part of an ensemble with your peers to continually design, make, discuss and debate

theatre and performance. As a member of our small (but perfectly formed) community, staff will see, understand and develop you as an individual, helping you to create a pathway through the course to achieve your ambitions.

Beyond the course, you'll be encouraged to see work and to get involved at Warwick Arts Centre, one of the largest multi-artform venues in the UK that's at the centre of our campus. You'll also be able to join one or more of the many award-winning performance-based student societies at Warwick. This unique combination of our course, the professional environment of Warwick Arts Centre, and the practical experience in creating and producing work within student societies, helps to make our graduates so successful. With a diverse range of careers in the creative and cultural sectors and beyond, our extended family of alumni are testimony to the fact that the sky is your limit with a Theatre and Performance Studies degree from Warwick.

THE SCHOOL

OUR FACILITIES

Our students see our facilities as their second home. Theatre and Performance Studies is joined by History of Art, Film and Television Studies, the Warwick Writing Programme, and the Centre for Cultural and Media Policy Studies, to make up Warwick's School of Creative Arts, Performance and Visual Cultures. We've recently moved into state-of-the-art facilities in the new Faculty of Arts Building (FAB), opposite Warwick Arts Centre and at the heart of the campus's cultural quarter.

Here, you'll learn in our black-box performance studios and adaptable rehearsal spaces with sprung floors, each fully equipped with industry-standard lighting, sound and projection equipment. In addition, there are studios and rehearsal rooms on the Westwood campus and in Millburn House. Our Video and Media Editing Suite comes with iMacs loaded with the Adobe Creative Suite and an offline lighting console with visualiser.

We also offer the use of high-end Apple laptops loaded with a wide range of creative software, giving you the freedom to edit sound, video, lighting and desktop publishing anywhere you choose. In this environment, we're able to support our students with a versatile range of equipment and training that allows a high degree of innovation; enabling you to realise your ideas for stage, screen, print and online, wherever you choose.

AN ENVIRONMENT THAT
ALLOWS YOU TO EXPERIMENT,
EXPERIENCE AND SHARE IDEAS.

Danny and Matt, BA Theatre and Performance Studies Students



Bowmer + Kirkland @bandkphoto



"In Theatre and Performance Studies there is such a friendly and supportive network of staff and students who all contribute to a warm and homely working environment. I've always enjoyed the modules that I've chosen and the flexibility of topics available to study. Every seminar has been fascinating, and our work was guided and encouraged by the enthusiasm of our lecturers."

SHAQUIRA LUE

BA Theatre and Performance Studies Student

OUR COMMUNITY

What makes Theatre and Performance Studies at Warwick particularly special is our ethos and culture. We foster a community of deep-thinking theatre and performance scholars and practitioners. Our small cohorts allow each year group to work as a cohesive ensemble throughout their three years, empowering them to build confidence, share ideas, debate, trust and experiment.

Our ensemble nature means that we have an excellent staff to student ratio, enabling staff members and visiting practitioners to have a close investment in you, your work, your interests and your aspirations.

Throughout the academic year there are a number of social activities organised by both staff and students. The student-produced Open Mic nights are especially popular, offering you a chance to share work from within your modules, from a society show that you're a part of, or perhaps a piece of new writing or performance that you've been developing in your spare time.

SUPPORTING YOU

From the outset you'll be given individual support from a second- or third-year student mentor and from a member of academic staff who will act as your Personal Tutor for the duration of your time at Warwick. Your Personal Tutor will arrange regular meetings with you to discuss topics such as academic progress, career planning, and your wellbeing. There are also central services - including Wellbeing Support, Disability Services, the Residential Life Team and Student Opportunity, which can give you specialist advice and guidance during your degree.





LET CREATIVITY FLOW

WARWICK ARTS CENTRE

Be immersed in an environment that will drive your passion for theatre, performance and creativity, both on campus and beyond.

At the heart of the University of Warwick's campus is Warwick Arts Centre – which boasts a 1500-seater concert hall, a 550-seater theatre, two studio theatres, a lecture theatre, three cinemas and an art gallery. The venue's diverse programme includes theatre, performance art, live music, film, opera, dance, circus and comedy.

The Warwick Arts Centre has undergone redevelopment to create a sustainable, fully accessible creative hub. Located alongside the brand new Faculty of Arts building, the arts centre is a key feature of Warwick's new Creative Quarter on campus and is the best place to experience what the arts has to offer.

IN 2022, THE AWARD-WINNING PHYSICAL THEATRE COMPANY GECKO BROUGHT 'KIN' TO WAC.

AN INTERNATIONALLY RECOGNISED THEATRE AT YOUR FINGERTIPS

Warwick Arts Centre plays host to some of the best theatre on the national and international touring circuits and is regularly selected to premiere new works. In 2018, acclaimed playwright David Edgar launched his new solo show Trying It On at the venue, and in 2022 the award winning physical theatre company Gecko brought Kin here. Every year the Arts Centre's programme includes renowned companies – previous visitors have included Cheek by Jowl, Northern Broadsides, Kneehigh, Frantic Assembly, Matthew Bourne, English Touring Opera and Filter, to name but a few. You'll be exposed to visiting companies through theatre trips, studio workshops, guest lectures and post-show discussions.



"To have such a stunning venue on your doorstep, that offers such a diverse range of shows and artforms, is a huge bonus for anyone coming to study here. Particularly students on our course! It's amazing to have a world-class venue on our campus with so many different performance spaces."

TOBY MURRAY

BA Theatre and Performance Studies Student

OUR CURRENT STUDENTS TAKE FULL ADVANTAGE OF THIS AMAZING FACILITY ON THEIR DOORSTEP.

They gain practical experience working as performance stewards, Box Office Assistants, Duty Managers, Operations Assistants, Marketing Interns, Technical Assistants and Youth Theatre Leaders.



Photographer: Dave Freak



THE RIGHT TIME, THE RIGHT PLACE.

IN MAY 2021,
COVENTRY BEGAN
ITS YEAR AS THE UK
CITY OF CULTURE

YOU'LL BE
PERFECTLY
POSITIONED TO
TAKE ADVANTAGE
OF THE CITY
OF CULTURE'S
SIGNIFICANT
LEGACY



STUDENT SOCIETIES

Warwick is home to some of the most well-respected and active student-led theatre and performance studies societies in the country. As part of these societies you'll develop and perform work in the professional environment that Warwick Arts Centre has to offer from the moment that you arrive, before potentially taking it to the National Student Drama Festival (NSDF) or to the Edinburgh Fringe. These societies often return with a cache of awards. Societies include Freshblood, which is a platform for new writing; Codpiece, which specialises in devised work and adaptation; the Warwick University

Dramatic Society (WUDS), which produces published plays; Shakespeare Society, which focuses on the works of the Bard; BAME Creatives, which aims to increase the visibility of BAME representation in theatre; Tech Crew, which supports all student productions behind the scenes; the Pantomime Society, which does what it says on the tin (oh yes it does!); and the all-singing, all-dancing Music Theatre Warwick. There's also an abundance of dance, music and arts societies, as well as those geared towards academic subjects, sports, hobbies, nations and cultures.



Charge by Motionhouse. Image Dan Tucker

IN OUR REGION

There's no better time to study Theatre and Performance at Warwick than now. In May 2021 Coventry began its year as the UK City of Culture, with a programme of events that attracted national and international attention. Since winning the bid to host this event in 2017 there's been significant investment in the region's cultural activity and infrastructure, which our students have taken full advantage of. Students have embraced multiple opportunities to get involved and contribute to this year-long celebration of culture and the arts, including by performing in the opening ceremony, by appearing in a TV

series, and by volunteering as City Hosts. Long after Coventry's City of Culture has ended, our students will reap the benefits of its legacy.

Located close to Birmingham and Stratford-upon-Avon, as well as Coventry, the University of Warwick is very well placed for students of theatre and performance, providing easy access to the Belgrade Theatre, the Birmingham REP, the Birmingham Hippodrome and the Midlands Arts Centre, amongst others. With their three stages and extensive archives (which are used as part of the course), the Royal Shakespeare Company is on our doorstep.

In addition, with London being within easy reach of us by train, you don't have to miss out on the arts scene of the capital.

Besides tapping into the extensive contact list of Warwick Arts Centre, we have excellent connections with local and regional theatre companies in the burgeoning Midlands cultural and creative arts scene, including Motionhouse, Stan's Café and Talking Birds (touring devised work internationally) and festivals including Fierce and the BE (Birmingham European) Festival.

OUR EXTENDED FAMILY AND YOUR FUTURE

We're exceptionally proud of our extended family of alumni and the diverse career paths that they've taken after their degree.

Employability is embedded in Warwick's Theatre and Performance Studies degree allowing you to think about your future from an early stage. As well as gaining valuable experience at Warwick Arts Centre, you can opt to take the 'Theatre & the Creative Industries' module, which brings professionals and experts into the classroom to discuss the principles and practices for areas such as running an arts venue; programming and commissioning work; setting up and running your own arts company; making touring arrangements; and identifying funding opportunities. You can also do a placement or internship as part of the course. Placements have been hosted by Dash Arts, Rosie Kay Dance Company, Birmingham REP, Fierce Festival (for live art), Trestle (Mask Theatre, St Albans),

Cannes Film Festival, and elsewhere. Many of our alumni go on to work in the arts, media and creative industries in a wide variety of roles.

Warwick also has a reputation for nurturing some of the most cutting-edge new theatre companies in the UK.

In 2015 *The Guardian's* Andrew Haydon asked 'What is it about Warwick?', as our graduate companies caused a storm at the Edinburgh Festival. Successful graduate theatre companies include Kill the Beast, Dumbshow, Barrel Organ, Breach, Walrus, Fat Git and Fell Swoop. A number of these are reunited annually at Warwick Arts Centre's Emerge festival, which celebrates the work of our alumni.



"There is so much more to this degree than meets the eye. Each module provides an insight into a different aspect of what theatre and performance is and can be. I have found new interests and have an increased awareness of potential future career paths. Through working on professional standard society shows, undertaking placements, and participating in roundtable discussions with industry professionals, this degree has given me a toolkit of transferable skills and experiences that will open many doors for opportunities in the future."

HOLLY HAINS

BA Theatre and Performance Studies Student

WARWICK IS 5TH MOST TARGETED UNIVERSITY BY THE UK'S TOP 100 GRADUATE EMPLOYERS

The Graduate Marketing in 2023, High Fliers Research Ltd.

A degree in Theatre and Performance Studies will equip you with a range of transferable skills, including advanced literary and communication skills; the ability to present persuasive, coherent written and oral arguments; the capacity to process complex information in a structured and systematic way; aptitude for conceptual thinking; excellent team working and people skills; sophisticated problem-solving and project management skills; and confidence in public settings.

These are all qualities that are highly valued in the creative industries and in the public and private sectors alike. Besides going into the creative industries, our alumni have gone on to work in marketing, PR, journalism, the law, the civil service, recruitment, education, the charity sector, publishing, and beyond.

A DEGREE IN THEATRE NOT ONLY OPENS DOORS FOR YOUR FUTURE, IT ENABLES YOU TO WALK THROUGH THEM WITH CONFIDENCE.

RECENT GRADUATES WORK WITHIN THE SECTOR FOR:

The National Theatre; Chickenshed Theatre; YouTube; Sadler's Wells; Royal Shakespeare Company; Free Radio; Royal Court Theatre; BBC; Sheffield Theatres; Southbank Centre; Birmingham Hippodrome; Serpentine Gallery; Mischief; National Youth Theatre; Merlin Entertainments; Ambassador Theatre Group; What's On Publications; Ticketmaster*

RECENT GRADUATES WORK BEYOND THE SECTOR FOR:

Michael Page International; Reed Recruitment; Google and Barclays Marks and Spencer; J Sainsbury PLC; Lush; Bank of America; MODE; the Metropolitan Police; Fuel Recruitment; Shell; Avolus; Rhinegold; Procter & Gamble; the National Trust*

ALUMNI FROM THEATRE AND PERFORMANCE STUDIES ARE EMPLOYED IN THE FOLLOWING ROLES:

- Actor
- Set Designer
- Hotel Manager
- Recruitment Consultant
- Marketing Manager
- Head of Drama
- Producer
- Special Constable
- Freelance Writer
- Performance Artist
- Director
- Senior Account Executive
- Education Programmes Co-ordinator
- Screenwriter
- Playwright
- Graduate Editor
- Artistic Director
- Trainee TV Researcher
- Subject Librarian
- University Teaching Fellow
- Business Development Manager.*

*Source: Alumni Data Services



Kill the Beast, Photo by Nathan Chandler

MEET THE FAMILY: ALUMNI CASE STUDIES



BATHSHEBA PIEPE ACTOR

Theatre and Performance Studies
Alumni, 2008-2011

"After Warwick, I trained at the London Academy of Music and Dramatic Art (LAMDA) and now I work as an actor. One of the highlights of my career so far has been working for the Royal Shakespeare Company, both for a season in Stratford and in the West End. As a student at Warwick, I would watch as many RSC shows as possible and it really was a dream of mine to perform there. The student drama societies at Warwick are phenomenal – there's endless scope for experimentation and discovery. One of the most exciting things about the Theatre and Performance Studies course

GOING TO
WARWICK OPENED
UP MY WORLD
INTELLECTUALLY,
IMAGINATIVELY,
CREATIVELY AND
PRACTICALLY, AND
WAS ABSOLUTELY
INSTRUMENTAL IN
MY PERSONAL AND
PROFESSIONAL
GROWTH.



at Warwick is the diversity of interest it encourages, and how many people go on to create their own work. I often collaborate professionally with artists I first encountered while devising a Codpiece show at uni, or performing in a Freshblood (new writing) piece in an abandoned postal building on campus. Going to Warwick opened up my world intellectually, imaginatively, creatively and practically, and was absolutely instrumental in my personal and professional growth."

"Theatre and Performance Studies armed me with so many vital tools that prepared me for my career in arts administration. The type of assessments gave me real-life exposure to what a job in the industry may be like and I emerged from University equipped with the skills to take me wherever I wanted to go. I was able to collaborate, to communicate, to delegate and to compromise, to present myself and my position in a debate, to be an active listener, to negotiate and to influence. I could work well independently, as part of a team, or leading a team. These are all key skills that employers of any sector are looking for.

The School's close links to Warwick Arts Centre introduced me to the cultural landscape and opened doors into the arts industry for me and many of my peers. The Arts Centre's team and the course tutors have their fingers on the pulse of current and emerging companies and their work, which you'll have easy access to as they pass through this amazing venue."



FIONA JOSEPH DATA AND INSIGHTS MANAGER AT THE NATIONAL THEATRE

Theatre and Performance
Studies Alumni,
2010-2013

DANIEL HEMSLEY MANAGING DIRECTOR, SWAMP MOTEL

Theatre and
Performance Studies
Alumni, 2007-2010



"By complete coincidence I ended up joining Accenture – a global management consultancy company – on the exact same day as another Warwick Theatre and Performance Studies graduate.

Theatre and Performance Studies at Warwick is an excellent place to nurture relevant skills and experience that can help you to thrive in a career like this. It's important to recognise that these are skills and experience that you wouldn't necessarily accumulate studying other disciplines, which can then be bolstered through embracing opportunities in the wider university, in clubs and in societies. As a Theatre and Performance Studies graduate you should understand and be comfortable articulating the value that you'll bring to an organisation, in interviews and on your CV.

The corporate world is looking for creative, hard-working graduates from a variety of backgrounds and disciplines."

SINGLE HONOURS DEGREE

BA THEATRE AND PERFORMANCE STUDIES (W440)

Our Single Honours degree allows you to engage creatively and critically with performance-making and to understand and interrogate contemporary and historical issues through the lens of Theatre and Performance Studies.

BE TAUGHT BY SOME OF THE WORLD'S LEADING SCHOLARS AND TALENTED PRACTITIONERS.

HOW YOU'LL BE TAUGHT

Our teaching is delivered via studio-based explorations, small-group seminars and interactive lectures, supplemented by theatre visits, field trips, guest lectures and workshops with visiting academics, artists and companies. Our teaching is research-inspired, striking a balance between providing you with a broad understanding of the discipline and giving you access to the distinct specialisms of our academic staff, who are passionate about the work that they do. Besides being taught by some of Britain's leading scholars, you'll be taught by a range of practitioners. Our staff body includes anna six, Co-Artistic Director of Idiot Child theatre company; Saul Hewish, one of the UK's leading artists working to create theatre for and with those in the judicial system; Caroline Griffin, a specialist in audience development and arts marketing; and Natalie Diddams, a director and dramaturg, who has worked internationally and specialises in empowering marginalised communities through comedy.

HOW YOU'LL BE ASSESSED

During your degree you'll be assessed through a variety of methods, including practical projects, creative logbooks, portfolios, essays, critical reflections, and individual or group presentations. In all of our assessments we place an emphasis on real-life outputs. This means that in the Audience Development and Marketing module you will use real-life data to create a market assessment and in the Community Theatre module you'll create a piece of theatre and an accompanying workshop for offenders to take into a prison environment. Throughout your degree you'll receive regular feedback on your work which will be integral to your development.

FIRST YEAR

The first year of your Theatre and Performance Studies degree consists of four core modules: two that are practice-based and two that are study-based. Through these modules you'll gain a greater understanding of the important relationship between theory and practice and will be introduced to key concepts for our discipline and a diverse range of performance-making possibilities.

THEORETICAL MODULES

THEATRE AND PERFORMANCE IN CONTEXT

This module considers what theatre and performance can tell us about our histories, cultures, societies and identities. You'll watch, read and study a range of theatre and performance from across historical, cultural and geographical borders, in order to see how it not only reflects society, but also seeks to change and shape it.

The module is split into four blocks, considering theatre and gender, race, sexuality and class. This module will help you to hone your academic writing, research and presentation skills, which will serve you throughout your degree.

WAYS OF SEEING

This module will train you in core study skills and introduce you to the practice of critical analysis. Together we will explore how and why one might read cultural works and everyday life. In this sense we will ask how meaning is made, shared, and distributed. What do things mean? How do we know what they mean? And how do I know that you mean what I mean when we talk together about what something means? In short, we will reflect on acts of interpretation and what is at stake when we talk about art.*

PRACTICAL MODULES

FROM TEXT TO PERFORMANCE

Through practical exploration of a number of selected plays and texts, in this module you'll investigate the process of taking material from page to stage or performance, and the relationship between theory and practice. You'll have the opportunity to experiment practically with realising multiple texts in performance, considering aspects such as staging, genre, narrative structure, performance strategies, dramaturgical thinking and directorial conceptualization, as well as the changing role and function of the audience.

CONTEMPORARY PERFORMANCE PRACTICES

In Contemporary Performance Practices (CPP), you will discover your own personal starting points for making socially engaged and politically conscious theatre and performance work. Workshops are designed to create a community of burgeoning artists who work together, as well as use the self as the stimulus in the creation of solo and group work. In this module, you will begin by thinking about one-to-one, intimate, and autobiographical performances through to making site-specific, place-based, devised, and participatory performances. In moving through these different topics, you are encouraged to experiment, play, take risks, fail, and take to different environments as a context to explore yourself, your body, and the world in which you live.

*This module is subject to the current course approval process. Please do refer to our website for further details.

SECOND AND THIRD YEAR

CRAFT YOUR OWN DEGREE PATH

Throughout your degree you'll typically combine conceptual and theoretical thinking with practical exploration and realisation. But this is your degree. At Warwick, you're empowered to make it your own.

In your second year there's one core module, Ways of Doing, and in your final-year you must choose from one of two optional core modules. You can select to do a traditional research project, which ends with the submission of a 10,000-word written dissertation. Or, you can do a practice-based research project, which culminates in the presentation of a piece of practical work.

Beyond these, you can select your optional modules from each of our module strands. If you thrive in the studio, then you can select more practice-based modules, or if you have a future career path in mind, you can specialise by selecting the modules which best-fit your plans.

SECOND YEAR: CORE

Ways of Doing

Ways of Doing is a research skills module which aims to develop your critically creative thinking, writing, and practice in dialogue with real-world issues. Throughout the module you'll engage with different types of performance, theory, practical workshops, and the methods which draw them together. The module seeks to show you new ways of doing research and practice to help you think about the real-world applicability of your work. It will ask you how you want to intervene in the world.

THIRD YEAR: OPTIONAL CORES

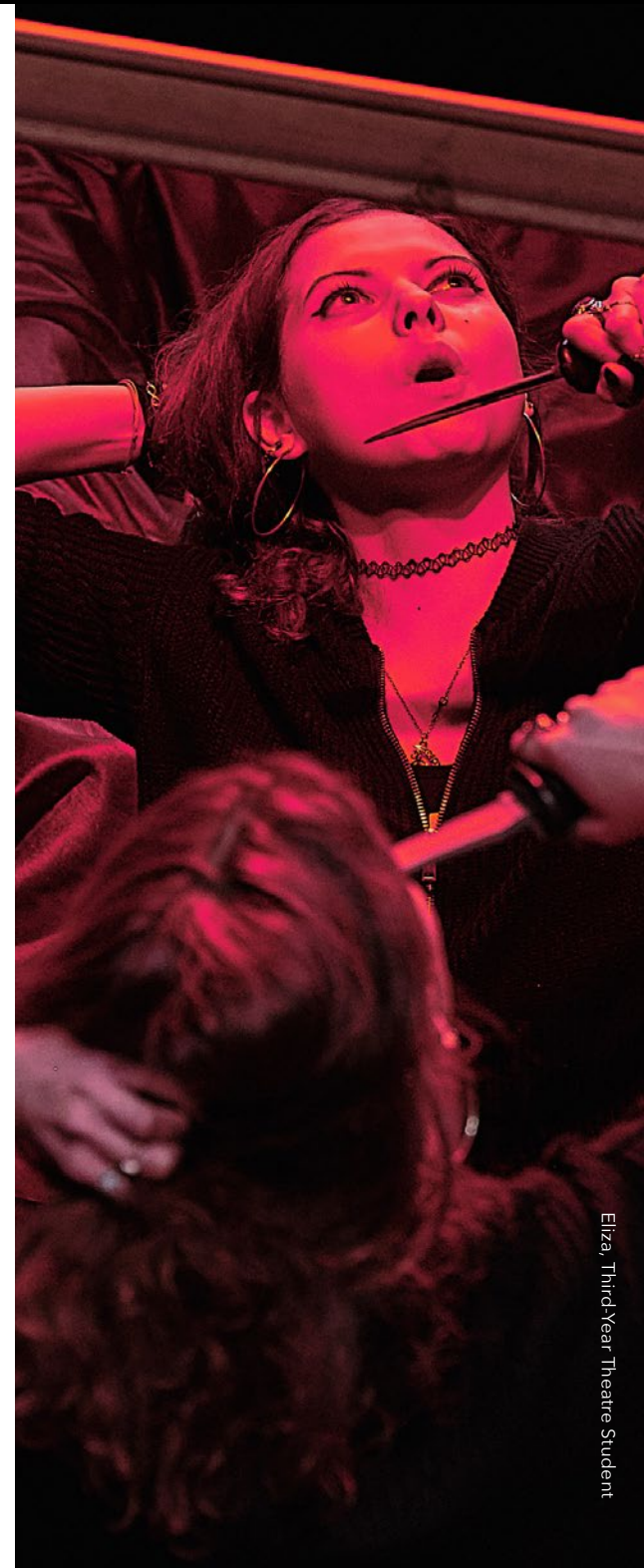
Research Project

On this module you'll carry out independent research into an area of theatre and performance studies that you love and will write an extended dissertation on your findings.

Throughout the research and writing process you'll be supported by structured class activities and regular one-to-one supervision meetings with a member of the academic team. To aid the development of your work, you'll present your research at a conference alongside your peers during the course of the year.

Practice-based Research Project

On this module you'll develop a practical project that is shaped by your questions about the world. This project may take a range of forms, including (but not limited to) live theatre, participatory workshops, an installation, a video, a written play, a space or a costume design, and you can choose to work solo or in small groups. You'll be supported through in-class workshops, supervision meetings, and work-in-progress showings. Your final work will be showcased as a festival in term 3.



Eliza, Third-Year Theatre Student

EXTERNAL MODULES

Besides theatre, do you have another passion that you don't want to lose completely at university? In the second and third years you're able to select modules outside your home department.

Each year a number of our students will take modules in subjects such as English, Politics, Psychology, Film and Television Studies, Languages, History, and Creative Writing.

The Centre for Professional Education run an 'Introduction to Secondary Teaching in Drama & Theatre Studies' module, which includes a school placement, and proves especially popular with our students.



STUDY ABROAD

As part of your degree you may apply to do an intercalated year studying with one of our partner institutions overseas. These partners include the University of Toronto and University of British Columbia in Canada; Monash University in Australia; and a number of Universities in Europe, including in Amsterdam, Helsinki, Lisbon, Ljubljana, and Dublin.

There are also a range of shorter-term mobility opportunities available to you during your time at Warwick.

Find out more:
warwick.ac.uk/study/studyabroad

"Having a variety of theoretical and practical modules has hugely expanded my understanding of theatre and performance. The optionality is helpful as you get to hone in on different areas of the course that really interest you. You're able to tailor your degree to suit you, your interests and how you like to study and be assessed."

CAITLIN TRACEY

BA Theatre and Performance Studies Student



OPTIONAL MODULES

The optional modules are organised into 3 strands. You will choose your options from each strand.

Although the availability of modules is subject to change on an annual basis and we cannot guarantee that all listed modules will run during your degree, this list will give you a flavour of the topics that you may explore on a Theatre and Performance Studies degree at Warwick.



ADAPTING SHAKESPEARE FOR PERFORMANCE

Why do the plays of Shakespeare continue to be recontextualised, reduced and remixed? The playwright himself was a consummate adapter, drawing on pre-existing materials and re-working these for his audiences, for whom his plays were a form of popular entertainment.

This studio-based module will involve the practical exploration of a diverse range of artists who have adapted the works of Shakespeare, including comedians, filmmakers, physical theatre companies and rappers.

For your assessment, you'll produce your own creative responses to Shakespeare's work.

APPLYING THEATRE: HISTORIES, GEOGRAPHIES, PRACTICES

Exploring the histories of applied theatre and the varied geographical contexts in which practice occurs, this module aims to introduce you to the key ways in which theatre is applied to meet a range of objectives pertaining to global development, education, health and wellbeing, and more. You'll interrogate the emergent debates that are shaping research and practice in applied theatre today, including the ethics of intervention, sustainability and issues around instrumentalising theatre to achieve social and educative outcomes.



DIGITAL SCENOGRAPHY

Digital Scenography introduces students to virtual production, creating virtual worlds for live performance and film. The module will cover motion and facial capture and world-building using Unreal Engine 5.

It will introduce students to the creation of digital worlds, populating these worlds with animated and speaking characters, utilising motion and face capture equipment within the School, and producing finished work in the form of a live performance, game, video or exhibition that is presented at the end of the module.

AUDIENCE DEVELOPMENT & MARKETING

Through this module you'll gain an insight into the theory and practice of strategic marketing and audience development for the arts and will consider the special challenges of marketing creative products. The module has an emphasis on practical application, and will include creating marketing materials, using social media, budgeting and evaluating marketing activity. To bring the subject to life the module uses live case-studies and industry resources.



CONTEMPORARY EUROPEAN THEATRE

More relevant than ever, through an exploration of recent European plays, performances, and films originating from across the continent, this module addresses the changing historical, political and cultural realities of Europe.

You'll consider how European theatre and performance has engaged with pressing issues and concerns, such as war, migration, the refugee crisis, right-wing nationalism, the ongoing financial crisis, secularism, the rise of religious extremism, national security, and the crisis of the EU.

INTERCULTURAL PERFORMANCE PRACTICES

Looking at the work of artists and organisations such as Peter Brook, Ariane Mnouchkine and Disney, and forms such as Japanese Takarazuka, Australian musicals and African exhibitions, this module investigates the implications of consciously incorporating the performance traditions of differing cultures into contemporary theatre and performance. Through discussion and practical tasks, you'll explore issues that arise in contemporary intercultural performance, such as the impact of cultural imperialism and globalisation on performance production, and the aesthetic and ethical issues of this work.



LOVE: PERFORMANCE, THEORY AND CRITICISM

Love remains an ever intriguing and complex emotion. Representations of love have been idealised, romanticised and formalised as part of theatre and performance tradition over centuries. In recent years love has also become visible (again) as a contested theoretical problem and political issue. The module addresses the “love question” as an open and exciting interdisciplinary field – one that traverses the arts, the humanities and the sciences.



MAD, BAD, AND SAD: MADNESS AND CULTURAL REPRESENTATION

On this module you'll consider the cultural history of madness through twentieth and twenty-first century examples of theatre, film, and literature that seek to represent mental health. Through an examination of theoretical, philosophical, historical, sociological and medical texts, alongside discussion and practice, we'll explore not only what is 'madness', but how and why one might choose to represent it.

MATTERS OF LIFE AND DEATH: CARE IN TIMES OF CRISIS

This module explores the role and nature of care in times of crisis – from the intimacy of end-of-life care to the planetary scale of climate

crisis. Together we will explore what it is to care for people, for places, for things. We will consider how far care is a role, an occupation, a practice, an obligation, a burden. We will also question what it means to be care-less and care-free. [...] We will ask not only what is 'care', but how and why one might choose to radically re-imagine it as part of a broader global project of social and climate justice.



DRAMA AND HEALING

Developed in response to increasing interest in this area of work, Drama and Healing offers a broad introduction to the variety of ways drama is utilised in clinical settings to help people address mental health needs. Specifically you will gain an understanding of the history and development of approaches employed by dramatherapists and

psychodramatists in their work. This will include an examination of the psychological theories that inform practice as well as discussion of different strategies and the context in which they are used. NB Both dramatherapy and psychodrama are regulated professions. This module does not train you as a therapist, but will provide an opportunity to learn more about progression routes if this is of interest to you.

POST-WAR BRITISH THEATRE AND SOCIAL ABJECTION

This module is about the here and now. You'll address the theatrical treatment of issues that have been at the heart of the British nation in the twenty-first century and subject to widespread public debate, media campaigns, political controversy and legislation. These issues might include migration, homelessness, Black Lives Matter, precarious labour, riots and the north/south divide. The module addresses a range of different theatrical contexts and forms from large-scale plays for major theatres, to smaller-scale community pieces that encompass various styles including musicals, dance theatre, verbatim and monologues.



PLACEMENT: CREATIVE ARTS AND THE CULTURAL INDUSTRIES

As part of your degree you can opt to undertake a structured placement at an arts or cultural organisation. By doing so you'll gain an understanding of the pressures, requirements, workflow and practices of a specific activity or set of activities within a professional arts or cultural setting, and an understanding of the wider operation and activity of the artist/company/organisation in question. The opportunity to complete a placement as part of your degree will give you valuable hands-on experience which may influence your future career trajectory.

POST-WAR BRITISH THEATRE AND SOCIAL ABJECTION

This module is about the here and now. You'll address the theatrical treatment of issues that have been at the heart of the British nation in the twenty-first century and subject to widespread public debate, media campaigns, political controversy and legislation. These issues might include migration, homelessness, Black Lives Matter, precarious labour, riots and the north/south divide. The module addresses a range of different theatrical contexts and forms from large-scale plays for major theatres, to smaller-scale community pieces that encompass various styles including musicals, dance theatre, verbatim and monologues.

PERFORMING GENDER AND SEXUALITY

Performing Gender and Sexuality examines the role of gender and sexuality in contemporary society and theatre, performance, and artistic practice. As such, this module analyses how performance and artistic practices engage with, reveal, challenge, deconstruct, and resist dominant norms of gender and sexuality.

SECONDARY TEACHING IN DRAMA AND THEATRE STUDIES

Ever thought about being a Drama Teacher? If so, this module is for you. Run by Warwick's Centre for Teacher Education, the module aims to introduce you to teaching drama and theatre studies at secondary level. It begins with workshops and seminars considering key themes and theories in education, such as how students learn, the use of assessments for learning, and discipline-specific pedagogy relating to the teaching of drama. You'll then put your learning into practice with a placement in a local Coventry or Warwickshire school.

FOOD AND PERFORMANCE

Food and Performance considers how the need to regularly consume food reflects our physical, cultural, political and social realities, exploring and creating performance that examines these practices.

By the end of the module, students should be able to identify and debate central issues around the cultivation, distribution, preparation and consumption of food and the extent to which these are addressed in theatre practice.



THEATRE AND NATIONAL IDENTITIES

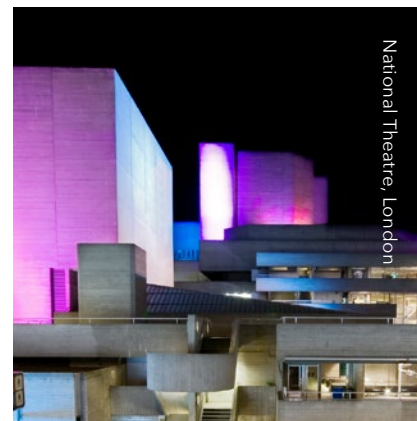
This module's overarching question relates to how English, Scottish, Welsh and Northern Irish theatre institutions, playwrights, theatre-makers and performance artists have engaged with conceptions of the nation, nationalism and national identity during the twentieth and into the twenty-first centuries. You'll investigate different manifestations of 'national theatres' and will study plays and performances hailed as seminal 'state of the nation' works, as well as those that challenge understandings of national identity in the contemporary moment.

ON ITS FEET: APPROACHES TO DEVISING AND DEVELOPING ENSEMBLE PERFORMANCE

Aiming to develop advanced skills in devising contemporary, ensemble-based performance, this module equips you with a creative toolbox to take forward in your own work as a practitioner. You will work to a set brief, with leading artists and companies, to devise a realised performance as part of a group and engage in reflection and creative experimentation throughout the module.

THEATRE & THE CREATIVE INDUSTRIES

In partnership with Warwick Arts Centre, and with visiting speakers from across Britain's creative and cultural sectors, this module will introduce you to principles, practices and considerations for running an arts venue; programming, commissioning and presenting work; supporting artist development; marketing work to audiences; undertaking outreach and engagement activities; setting up and running a small theatre company; making touring arrangements; identifying opportunities for funding; and more.



THEATRE IN THE AFRICAN CONTEXT

This module traces the diversity of theme and form in the theatre of Africa in the post-colonial context. It focuses on the social,

political and economic changes that have influenced and affected the development of theatre across various countries in Africa. Through seminars and practice, working with texts in translation, you'll look at the role of story-telling, enactment and ritual theatre; theatrical responses to colonialism; and issues related to gender.

YOU, ME, AND EVERYONE WE KNOW: IDENTITY AND PERFORMANCE

This module offers an engaging and challenging introduction to the politics of identity and performance through a theoretical and practical exploration of a variety of artistic forms - from biographical drama to live art and stand-up comedy. You'll develop your devising skills as you create small group or solo practice-based projects that tackle and present issues of identity.

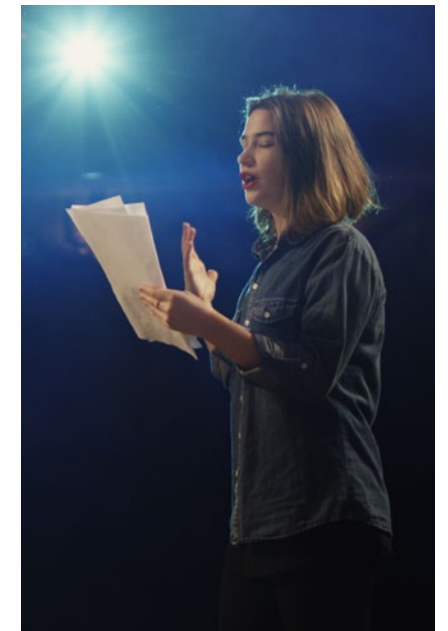
THEATRE IN THE COMMUNITY

Led by one of Britain's leading theatre practitioners working in the criminal justice system, Theatre in the Community is one of our most popular modules. You'll be given a grounding in the contexts, objectives and strategies of drama and theatre in community settings. You'll develop skills in workshop planning, facilitation, behaviour

management, and devising for specific contexts. For your final assessment you'll work in a small group to plan, devise and present a performance and workshop to a prison audience.

WIRED: VIDEO-MAKING

The module draws on the practical skills of students and augments them with the competencies required to produce a video. Assessment is divided into a first video based on a set text and then a final video on a subject of your groups' choosing. The module is based in the department's Edit Suite and includes instruction in the use of 4k Canon cinema cameras and training in video editing using Adobe Premiere Pro. Instruction is also provided in audio editing, colour grading and motion graphics, and compositing using After Effects.



PLAYWRITING

Through a combination of workshops, critical seminars, and discussions, this module will develop your practical and creative skills in playwriting. The module will consider the constituent elements of dramatic text such as action, character, dialogue and space, both in your own work and that of notable practitioners.

The module will expose you to different techniques and strategies of the playwriting craft, while at the same time encouraging you to toy with "dramaturgical rules" in search for your individual voice as a writer.



JOINT HONOURS PROGRAMMES

BA ENGLISH AND THEATRE STUDIES (QW34)

In the first year of your English and Theatre Studies degree you'll gain an understanding of literature from the classical past to the here and now. You'll look at post-war British theatre from the 'angry young men' to the women of the 'awkward brigade'. You'll ask big questions about how politics and culture intersect with the study of theatre and performance and about how performance and theatre construct identity.

In your second year you'll think about theatre as an intervention in public space. You'll study English-language plays that have shaped democratic institutions around the world as well as plays from the Greeks to the present that constitute the European tradition of theatre.

During your second year you'll also start selecting from a diverse range of modules from both Theatre and Performance Studies and the Department of English and Comparative Literary Studies, allowing you to take your degree in the direction of your interests. There's everything from medieval dream-visions to post-9/11 fiction, Romantic and Victorian poetry to

postcolonial writing and literary theory, as well as modules on Georgian theatre, early modern and Restoration theatre, applied theatre and playwriting.

In your final year you'll study Shakespeare as a jobbing playwright. You'll think about his writing for the early modern stage, but also about his afterlife in subsequent performance on stage and film. And you'll choose modules that extend your horizons, including proposing your own research project as a dissertation.



BA THEATRE AND PERFORMANCE STUDIES AND GLOBAL SUSTAINABLE DEVELOPMENT (W4L8)

Theatre and performance are potent art forms with the potential to influence human behaviour and transform the world. Globally, theatre and performance artists continue to reflect on the most pressing challenges we face. By studying BASc in Theatre and Performance Studies and Global Sustainable Development you'll become part of this movement and explore the radical and revolutionary artistic power of theatre and entertainment.

Through combining modules in Theatre and Performance Studies alongside Global Sustainable Development, you'll gain the knowledge and skills to respond creatively to issues that could include gender inequality, health education, the climate crisis or challenging unjust social, political and economic structures. This unique course therefore connects the possibilities of working through theatre with the most pressing issues related to Global Sustainable Development, enabling you to further your passion for theatre and performance while building an interdisciplinary skill set from the arts and sciences.

In your first year, you'll take core modules from both Theatre and Performance Studies and Global Sustainable Development. In Global Sustainable Development, you'll undertake a diverse array of modules, developing research knowledge and investigating practical solutions to the 'Big Questions' of our time. You'll explore current challenges of sustainability from many different perspectives, understand their complexity and learn to use a variety of approaches to think creatively about how these problems might be overcome.

In your second year, you'll take two optional core modules with a Global Sustainable Development focus which could include Food Systems, Health and Sustainable Development and more. You'll also choose from a range of modules in Theatre and Performance Studies. Your final year will include a dissertation in Global Sustainable Development alongside a range of options from Theatre and Performance Studies or from other disciplines within the University, if you so wish.



JOINT HONOURS LANGUAGES PROGRAMMES

BA FRENCH AND THEATRE STUDIES (R1WB)

BA GERMAN AND THEATRE STUDIES (RW24)

BA HISPANIC STUDIES AND THEATRE STUDIES (R4W4)

BA ITALIAN AND THEATRE STUDIES (R3WA)

You can combine Theatre Studies with one of four languages at Warwick.

On these degrees you'd split your time equally between Theatre Studies and French, Italian, German, or Hispanic Studies. All of these degrees would normally be four-year courses, with Your second or third year will normally be spent abroad, either studying or working. spent abroad. courses, with either your second or your third year spent abroad.

In the first year of your degree you'll have the opportunity to participate in practical and theoretical modules that consider how politics and culture intersect with the study of theatre and performance. Alongside this, you'll develop your linguistic skills through our core language programme and will be introduced to the richness and diversity of the contexts that shape your language of study. In your intermediate year you'll take your linguistic studies to the next level while starting to shape your degree according to

your interests in languages and in theatre. You'll be able to select from an array of exciting modules from both the Department of Theatre and Performance Studies and the School of Modern Languages and Cultures.

Your second or third year will be spent abroad, either studying or working. This year offers you the opportunity to immerse yourself in the language and culture that you've chosen to study and, if you wish, to pursue your interests in theatre in a different cultural setting. In your final year you'll continue to advance your language abilities, building on the work that you've done on your year abroad, and will be able to choose from a wide range of modules from both departments that enable you to curate your own degree.

Selwin and Eve, Joint Honours Theatre Students



TYPICAL OFFERS*

BA THEATRE & PERFORMANCE STUDIES (W440)

A Level: ABB

IB: 34

BTEC: D*DD in a BTEC Level 3

Extended Diploma/National Extended Diploma in a relevant subject

BA THEATRE & PERFORMANCE STUDIES AND GLOBAL SUSTAINABLE DEVELOPMENT (W4L8)

A Level: AAB including Grade B/Grade 6 in English and Mathematics at GCSE

BA ENGLISH AND THEATRE STUDIES (QW34)

A Level: AAB to include A at A Level English Literature or combined English Language and Literature

BA IN FRENCH AND THEATRE STUDIES (R1WB)

A Level: ABB to include a modern or classical language

BA GERMAN AND THEATRE STUDIES (RW24)

A Level: ABB to include a modern or classical language

BA HISPANIC STUDIES AND THEATRE STUDIES (R4W4)

A Level: ABB to include a modern or classical language

BA ITALIAN AND THEATRE STUDIES (R3WA)

A Level: ABB to include a modern or classical language

* The typical offers listed are indicative. We welcome applications from students with other recognised qualifications. For more information go to warwick.ac.uk/ug

THE APPLICATION PROCESS

Applications are made through ucas.com. When we receive your application it's considered against our entry requirements and other applications to the course. We take into account your full profile and your potential as an individual, not just your actual or predicted grades, so it can take some time to get back to you.

If you've applied for a place on the Single Honours Theatre and Performance Studies course you'll be invited to attend an Applicant Day, where you have the opportunity to embed yourself in our environment for a full day. You'll be hosted by academic staff and current undergraduate students and will be given an introduction to the campus, our facilities and the course. You'll be invited to an interview and will have the opportunity to take part in taster seminars and practical workshops!

"VERY WELL ORGANISED, EXTREMELY INFORMATIVE. I HAVE FALLEN IN LOVE WITH SPECIFICALLY THE THEATRE DEPARTMENT AND I HAVE HAD A FABULOUS TIME!"

A student attending our latest Applicant Day in 2022.

If you've applied for a Theatre and Performance Studies Joint Honours course with English you'll be invited to an Interview Day, with offers made soon afterwards. If you've applied for a Joint Honours degree with Global Sustainable Development or a Language your offer will likely be based on your application alone. You may still be offered to take part in an Applicant Day to help you to see what studying Theatre and Performance at Warwick might be like.

OVERSEAS APPLICANTS

At Warwick, we welcome applications from across the globe, and have dedicated teams available to advise and support, as well as a global network of Agents and Representatives. For more information on applying from your country see: warwick.ac.uk/io

If you apply for a Single Honours Theatre and Performance Studies degree you'll be asked to attend a Virtual Applicant Day online, after which we'll make a decision on your application.

SCHOLARSHIPS, BURSARIES AND WIDENING PARTICIPATION

We make differential offers to students in a number of circumstances.

To find more information please visit: warwick.ac.uk/study/undergraduate/apply/contextual-offers

We want to ensure that, wherever possible, financial circumstances don't become a barrier to studying at Warwick. We provide extra financial support for qualifying students from lower income families.

warwick.ac.uk/study/undergraduate/studentfunding

ACCOMMODATION

Warwick Accommodation manages over 7400 self-catering residences on campus. Living on campus in your first year gives you the opportunity to meet people and form new friendships whilst never being more than a short distance from your lectures or the amazing facilities campus has to offer. At Warwick, you'll enjoy the freedom of independent living alongside your fellow students but with the security of knowing you're surrounded by people who can support you. For more information visit:

warwick.ac.uk/accommodation


VISIT US


The university organise four open days in early summer and in autumn for students wishing to visit the university. These events include opportunities to meet with the academic departments of your choice and view some of our on-campus accommodation.


warwick.ac.uk/study/undergraduate/visits

Theatre and Performance Studies
School of Creative Arts,
Performance and Visual Cultures
Faculty of Arts Building
University of Warwick
Coventry CV4 7HS

 warwick.ac.uk/theatrestudies

 @TheatreWarwick

 scapvcenquiries@warwick.ac.uk

 @theatrewarwick

This course information was accurate at the time of publication (JUNE,2023). While the University tries to ensure that the information is accurate, it does not warrant that this is the case. The University may need to make changes including to the course content, syllabus, delivery, methods of assessment, or to comply with external accrediting or reviewing bodies. It is therefore important that you revisit the relevant course website before you apply and when you accept an offer to ensure you are viewing the most up to date information. This information should not be construed as an offer and nor does it create a contract or other legally binding relationship between the University and you or a third party. For full terms and conditions, please visit warwick.ac.uk/ugtermsandconditions