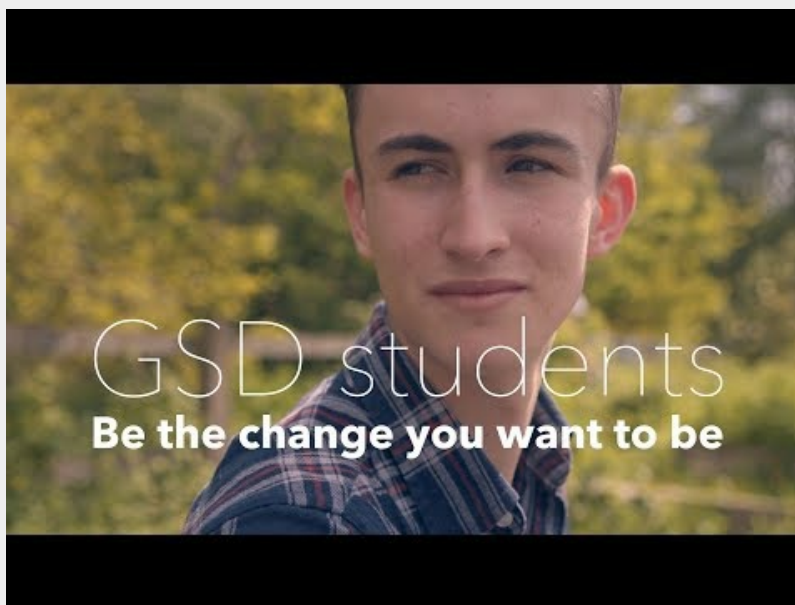


MASc in Global Sustainable Development Live Chat

Chat with the Global Sustainable Development (GSD) Department to find out about our new transdisciplinary MASc degree. You'll be able to speak directly to our Director of Postgraduate Taught Programmes and our Postgraduate Programmes' Manager.

GSD students: Be the change you want to be



Luke's video

<https://youtu.be/ulrYdqSLbnU>

Today



Hello and welcome to our 'MAsc in Global Sustainable Development Live Chat'. We're looking forward to speaking to you today. I'm Jess and I'm a Recruitment and Communications Officer in the GSD Department. Today you'll mainly be speaking to Mandy (Director of Postgraduate Taught Programmes), Heather (Postgraduate Programmes' Manager), and one of our current undergraduate Sociology and GSD students, Lucía 😊 This is a straightforward Q&A session, so when you're ready please introduce yourself and ask us your questions - we're here to help



Hi Everyone! Thank you for joining us today. My name is Dr Mandy Sadan and I am the Director of Postgraduate Taught Programmes and I am here to help with any questions you may have relating to the academic side of the postgraduate programmes. I am happy to answer questions about our doctoral programme, too!



Hello and welcome, I'm Heather, the School's Postgraduate Programmes Manager. I can help with any admin, practical or support questions for both our programmes.



Hi everyone, welcome! My name is Lucia, I am a student ambassador for GSD and I will be answering questions about student life, experience, and opportunities for students in and outside the department :)



Please do feel free to ask any questions! We are very happy to help. Thank you for joining us!



Hi everyone, my name is Paridhi and I am an offer holder for MASc GSD. I have some questions about the course, especially since this will be the first cohort.



Hi Paridhi! Do please ask away! Thank you so much for applying to join the programme. We are hoping to see you in September.



Thank you! The course page said that the first term would require 8-10 contact hours, which will vary in the 2nd term, based on the modules taken up. I wanted to know how often would classes be held and how would you split up the taught and research part of the course?



Classes in term 1 will be held weekly with a mixture of lectures (including guest speakers), seminars and practical classes. In term 2, all optional core modules will be held weekly (2 hours per week) and then most of your optional modules would have classes each week although occasionally they are taught in intensive blocks of a week depending upon which you choose.



Thank you! The course page said that the first term would require 8-10 contact hours, which will vary in the 2nd term, based on the modules taken up. I wanted to know how often would classes be held and how would you split up the taught and research part of the course?

Hi Paridhi - this is an excellent question and there isn't a one size fits all as it really does depend on the courses that you select. The key to this is what are known as CATS. Each CAT represents 10 hours of study time. So, for example, if you study courses with a total of 20 CATS in term 1, that means that you will be expected to complete, in total, 200 hours of study over the whole course, including your own study time. This can be made up in different ways depending on the course. But in the first term, most modules will involve about 2-4 hours of classroom time each week, often with other activities taking place as well.



Are there scholarship/financial aid opportunities for this programme?



Thank you! The course page said that the first term would require 8-10 contact hours, which will vary in the 2nd term, based on the modules taken up. I wanted to know how often would classes be held and how would you split up the taught and research part of the course?

Most of the research components will be developed through into term 3 - but we will help you to prepare for them throughout the year with some dedicated sessions - and you will meet with a supervisor. But you will be expected to undertake your own studies during each week. Depending on which discipline you come from, you may find that you have more autonomy (i.e. if you come from a lab based science background) to organise your own time. Do you have a particular concern that we can help you with?



Yes, actually. As someone with a fashion and business background, what can I expect during this course? I come from a recycling background and got really into sustainability within the fashion industry while studying my previous degree.



Are there scholarship/financial aid opportunities for this programme?

We are offering 4 bursaries which contribute towards the cost of tuition fees:

<https://warwick.ac.uk/fac/arts/schoolforcross-facultystudies/gsd/prospectivestudents/postgraduate/mascbursaries> for full details - closing date for applications is mid-June

MASc Bursaries - Postgraduate Study - GSD

The School for Cross-faculty Studies is pleased to announce its Global Sustainable Development bursaries for postgraduate taught students. Find out details about the bursaries and how to apply.



Are there scholarship/financial aid opportunities for this programme?

Hi Danjuma! My colleague Heather will be able to give more details but we do have a number of scholarships. Unfortunately, the deadlines have passed for entry in September, but please do take a look if you are thinking for the following year.



Yes, actually. As someone with a fashion and business background, what can I expect during this course? I come from a recycling background and got really into sustainability within the fashion industry while studying my previous degree.

That's interesting to hear. I was speaking with a potential applicant yesterday who runs their own sustainable fashion brand and has a background in business and politics. There may therefore be others on the programme with experience in this sector.



Are the quantitative components of the program such that a non-quant student can cope with?



Yes, actually. As someone with a fashion and business background, what can I expect during this course? I come from a recycling background and got really into sustainability within the fashion industry while studying my previous degree.

One of the most important aspects of this course will be that you will be able to refine your interests and develop them in a way that is person to you and your background and ambitions. Obviously, we will have students from a wide range of backgrounds and so our core courses are designed to ensure that you have the intellectual tools to be able to do that - and you will need to be able to identify areas for your own development, with our support. But you will also have the opportunity to take optional modules in other parts of the school which will help you to identify particular areas of interest for you - so no one will complete the course in exactly the same way. If you look on our website, we have a page with some of the optional modules now listed. This will grow - but it will give you some idea of the opportunities. If you have a particular interest, Heather will be able to explore whether or not it might be possible to undertake a particular option of interest as well.



Thank you, that's really great to hear!



Are the quantitative components of the program such that a non-quant student can cope with?

Hi Danjumi - yes. In term two, you could choose an optional module in quants - and it would probably be a great idea to do so if you are lacking experience in that area. It will be taught by colleagues who are very experienced in quants, but in an applied way. So the course will focus on learning quants approaches in real-world contexts. This makes it more relatable and can help overcome any lack of confidence that many of us have if we are not so experienced in this.



Thank you, that's really great to hear!

Have a closer look at our programme details, Paridhi, and the options, and if you have any other queries you should please feel free to contact us. We know what a big choice this is and so we want you to feel confident about coming here and what it offers.



Yes, actually. As someone with a fashion and business background, what can I expect during this course? I come from a recycling background and got really into sustainability within the fashion industry while studying my previous degree.

Hi Paridhi, Mandy will be able to give you a deeper insight into the programme. However, I can tell you about initiatives you may be interested in. The University has multiple opportunities to engage with practical areas of sustainability. In particular you may be interested in Warwick SEED, a society that promotes business for development, or Enactus, another society that aims to find innovative solutions to social issues within their local and international communities. There is more

information about these here

<https://www.facebook.com/WarwickSEED/> and here
<http://enactusuk.org/>

Warwick SEED

Warwick SEED. 698 J'aime. We are the society at the University of Warwick that promotes business-for-good through speaker series, workshops, mentorship schemes and amazing get-togethers! Join us and...



Enactus UK

Teams of students all over the country work together to find innovative solutions to social issues within their local and international communities, working towards achieving the UN Sustainable Development Goals.



Thank you Lucia!



I'd also like to know how the research component would change as I'm more interested in getting a work placement for Term 3?



Are the quantitative components of the program such that a non-quant student can cope with?

Just to add to what Mandy has said, in term 1 we have a mixed methods module which incorporates both qualitative and quantitative research methods, in an applied way. This term 1 core module provides a foundation for you and you have the option to develop quants skills further in term 2 with a small 10 CAT module. You can do this alongside a qualitative module and a module on SD Policy or you can opt not to take the quants module. I would advise you to look in detail at the term 1 module - IP901 to see what it covers and how much quants it incorporates.



Good morning can you say how much the Global Sustainability masters cost?



Are the quantitative components of the program such that a non-quant student can cope with?

There are links to the full module details such as week-by-week content, reading lists and assessments which you can click through to from this

page:<https://warwick.ac.uk/fac/arts/schoolforcross-facultystudies/gsd/prospectivestudents/postgraduate/modules/>

Modules - Postgraduate study - GSD - University of Warwick

Postgraduate core, optional core, and optional modules available for Global Sustainable Development students at the University of Warwick.



I'd also like to know how the research component would change as I'm more interested in getting a work placement for Term 3?

We have a specific option to take a work placement so that will be part of the programme structures. We have 3 options - an academic paper, a practice-led project, or a workplace based project. At the beginning of the year, you will have plenty of opportunity to discuss this with our dedicated Placements and Employability Manager, Bodrun Nahar, and she will be able to support you. This is not an 'add-on' but an integral component of the programme so it is given full attention. It might be worth letting us know nearer the start of the year when you are sure you will be enrolling what you are hoping to do as the more time we have to help, the better.



Good morning can you say how much the Global Sustainability masters cost?

Hello, Mark. We seem to have seen you in every meeting. Are there questions that we have not already answered that we can address?



What is the difference between the MSc in Global Sustainable Development and the MSc/Ph.D in Sustainable Development? Can a prospective candidate without a research-based graduate degree be offered a place on the latter program?



Good day to this wonderful platform and I am sorry for coming late due to the network



What is the difference between the MASc in Global Sustainable Development and the MASc/Ph.D in Sustainable Development? Can a prospective candidate without a research-based graduate degree be offered a place on the latter program?

The MASc is a Masters level programme that is intended for students who want to undertake a one year period of study. This could be for professional development, as a conversion course or interest, or as preliminary studies in preparation for a PhD. The PhD is a 3-4 year programme which is intended as a higher level research degree. Typically you would have had to complete a Masters level course to enter a PhD programme. We would of course consider applicants with other forms of experience, but it is a big undertaking and it is often of significant benefit to have undertaken a Masters programme first.



Good day to this wonderful platform and I am sorry for coming late due to the network

Glad you're able to join us - how can we help?



Good day to this wonderful platform and I am sorry for coming late due to the network

Great to have you join us, Mohamed!



Thank you, Mandy, that answers my question.



Dr. How can you relate M.sc in Sustainable Development and M.sc in Sociology.



Thank you, Mandy, that answers my question.
Please just get in touch any time, Paridhi. We are very happy to help and know how important this decision is.



What is the difference between the MASc in Global Sustainable Development and the MASc/Ph.D in Sustainable Development? Can a prospective candidate without a research-based graduate degree be offered a place on the latter program?

Just to add to what Mandy has said - the PhD programme is listed as MPhil/PhD. This is because students are initially enrolled onto the Masters of Philosophy and, those who meet the criteria to continue to PhD are then upgraded to PhD studies. The MPhil is classed as a research degree too but at a lower level to PhD (typically 2 years rather than 4 years to complete)



A very insightful session, full of helpful pieces of information



Thank you all, this was been insightful and I look forward to meeting you all in September.



In case you haven't seen it before, we'll now play a short video for you which focuses on our MASc in Global Sustainable Development

MASc in Global Sustainable Development



MASc video

<https://youtu.be/e8E3M4vzSCo>



A very insightful session, full of helpful pieces of information

I'm glad to hear that you have found this useful - there's a wealth of information on our website and in the module catalogue. I would encourage you to explore and digest this - feel free to then ask further questions on anything which isn't clear.



Dr. How can you relate M.sc in Sustainable Development and M.sc in Sociology.

It is a good question and gets to the heart of what we do differently. If you do a MSc in Sociology, you will be learning intensively about that discipline. You may take some optional courses in other disciplines, and perhaps even in interdisciplinary approaches - but upon graduation, you will have gained knowledge primarily about the theory, methods and approaches of sociologists. In our programme, we place problem-based teaching at the core of what we do. So, for example, if you wanted to work out how to improve a transport network to make it sustainable, you would need to understand about politics, and environment, and technology - and some aspects of sociology, too. So our focus is on the challenges of sustainable development and how you can apply multiple approaches to real world problems.



A very insightful session, full of helpful pieces of information

Thank you for joining us, Danjuma!



Thank you all, this was been insightful and I look forward to meeting you all in September.

We are looking forward to meeting you, too!



Thank you all, this was been insightful and I look forward to meeting you all in September.

I'm glad to hear that we've been able to answer your questions and we very much look forward to welcoming you to Warwick in September!



Dr. I have a bachelor degree in Sociology with a second class low can I gain admission for M.sc in Sustainable Development?



Dr. How can you relate M.sc in Sustianable Development and M.sc in Sociology.

Hi, as a Sociology and GSD undergraduate student I believe that the courses have complemented each other very well. I am focusing my career into social development and while Sociology has helped me understand social issues and movements, GSD has supported me in outlining environmental and economic problems too, and relating them to social issues. Moreover, GSD's interdisciplinary approach was particularly interesting when combining two courses, especially when outlining responses to the studied problems, since I developed skills such as writing policy briefs.



Dr. I have a bachelor degree in Sociology with a second class low can I gain admission for M.sc in Sustainable Development?

Normally we would have an entry expectation of an upper second class degree, or a first. However, if you have a lot of relevant experience, or there were particular circumstances that affected your degree outcome, you have the opportunity to include information about this and to make a case in your personal statement. The personal statement is really important in our admissions process.



Don't forget that we've got one of our current undergraduate Sociology and GSD students, Lucía, with us. If you'd like to hear more about life as a GSD student, the Department, life at Warwick, etc. then please do feel free to ask Lucía your questions 😊



Lucía can tell you more about what it is like to study than we can!



Don't forget that we've got one of our current undergraduate Sociology and GSD students, Lucía, with us. If you'd like to hear more about life as a GSD student, the Department, life at Warwick, etc. then please do feel free to ask Lucía your questions 😊

And in the meantime, here's a video featuring one of our current undergraduate students, Luke

GSD students: Be the change you want to be



GSD student video

<https://youtu.be/ulrYdqSLbnU>



Thanks so much for your responds and it enhance me so much.



Thank you so much for your interest in our programmes, Mohamed!



Thanks so much for your responds and it enhance me so much.

Thanks for joining us, we are glad to hear that you feel well-informed about the programme.



What are the chances that a student who has successfully completed the MASc in Sustainable Development be admitted directly into the PhD programme in Sustainable Development?



Of course, it would not be guaranteed - and that would be related to whether or not there was someone who could supervise your PhD thesis. But if we are clear that that is your intention, we can be sure to advise you properly throughout to enhance the possibility of that. You will also have plenty of opportunity to discuss your future plans with members of staff - so all of these things will make it more likely. We would absolutely be delighted if our Masters programme led to our PhD programme. That would be a sign of success for us!



Welcome slide



What are the chances that a student who has successfully completed the MASc in Sustainable Development be admitted directly into the PhD programme in Sustainable Development?

I think one of the most important things, Danjuma, is that you would also have the opportunity to work out very directly and clearly whether or not our PhD programme was right for you. It is a really big undertaking and so having that prior experience can be really important in making the right decision. It is not just about our selection process, but also whether it is right for you!!



Hello! My names Issra, sorry I've turned up a little late! I live in Canada so it's fairly early here. Im actually an offer holder for undergrad gsd and psychology, and I was wondering how much of the Masters content is the dissertation and can this be started in the study abroad year?



Dr. What is the duration of the GSD program?



The Masters degree is 1 year long



Dr. What is the duration of the GSD program?

The MASc programme is 12 months long and our MPhil/PhD takes 3.5-4 years to complete.



Thank you so much for holding these chats guys!! Building on Danjuma's earlier question, would you recommend taking modules that are more tailored to our current strengths ie should we pick qualitative and sustainable development policy if we have had no experience with quants?



Okay, thanks



Hello! My names Issra, sorry I've turned up a little late! I live in Canada so it's fairly early here. Im actually an offer holder for undergrad gsd and psychology, and I was wondering how much of the Masters content is the dissertation and can this be started in the study abroad year?

Hi Issra! Sorry you had to wake up early to join us - but thank you for doing so! We offer 3 different kinds of 'capstone' project. You can choose to do a dissertation (although we want you to think about it as a publication from the outset, rather than just a document that disappears after it has been examined); or you can do a placement in one part of the university estates and provide a consultancy report and intervention; or you do a work placement. Whichever you choose, it is allocated the same time - it comprises one third of the total time of the course and is therefore a very important part of your programme.



Thank you so much for holding these chats guys!! Building on Danjuma's earlier question, would you recommend taking modules that are more tailored to our current strengths ie should we pick qualitative and sustainable development policy if we have had no experience with quants?

Hi Alban, in my experience, GSD is a very good course to open yourself to those areas that you are not too experienced in, as it is more practical and you can approach one same topic from multiple perspectives.



Thank you so much for holding these chats guys!! Building on Danjuma's earlier question, would you recommend taking modules that are more tailored to our current strengths ie should we pick qualitative and sustainable development policy if we have had no experience with quants?

I would say that this is entirely your choice. When choosing which of the term 2 optional cores you wish to take, I would advise that you think about your capstone project and the skills you will need to undertake it. For example if you wish to undertake surveys and write a dissertation then the quants might be very useful even if it stretches your comfort zone.



Hello! My names Issra, sorry I've turned up a little late! I live in Canada so it's fairly early here. Im actually an offer holder for undergrad gsd and psychology, and I was wondering how much of the Masters content is the dissertation and can this be started in the study abroad year?

Sorry, Issra - I missed the other part of your question. No - this would not be undertaken in the intervening year. It has to take place within the programme itself to be eligible for the award of the degree. But any experience that you get that might help you, would certainly be useful - but it wouldn't be given credit, I am afraid.



We're just approaching the final five minutes of this live chat - thank you for all of your questions so far! Please do make the most of these final few minutes to ask us any other questions you may have about the programme/life at Warwick



Dr. Those GSD program has a funding platform (scholarship)?



Thank you so much for holding these chats guys!! Building on Danjuma's earlier question, would you recommend taking modules that are more tailored to our current strengths ie should we pick qualitative and sustainable development policy if we have had no experience with quants?

I think it will depend on the kind of learning you need to undertake to achieve your own goals. I know that sounds very vague! For example, if you know that you want to go on to do a PhD and you are likely to want to include primary data collection that is statistically focused, it would make sense to use your MAsc to help you develop that new skill. However, if you know that there is a particular focus - environment, health etc. - that you want to learn more about and this could be new, or it could be to deepen prior knowledge, then you should choose that. I think it is a real opportunity to challenge yourself and to learn skills that will support your ambitions, whatever that might be. But a mix of 'old' and new is probably the outcome for most students - but even those areas that you are familiar with will hopefully be taught and discussed in ways that will completely change how you understand and think about them.



Hi! Also, I'd like to know how intense do you think the course will be



Dr. Those GSD program has a funding platform (scholarship)?

We aren't able to offer full scholarships for the MASc programme but have 4 bursaries on offer which would help towards the cost of the tuition fees. Full details are here:

<https://warwick.ac.uk/fac/arts/schoolforcross-facultystudies/gsd/prospectivestudents/postgraduate/mascbursaries>

MASc Bursaries - Postgraduate Study - GSD

The School for Cross-faculty Studies is pleased to announce its Global Sustainable Development bursaries for postgraduate taught students. Find out details about the bursaries and how to apply.

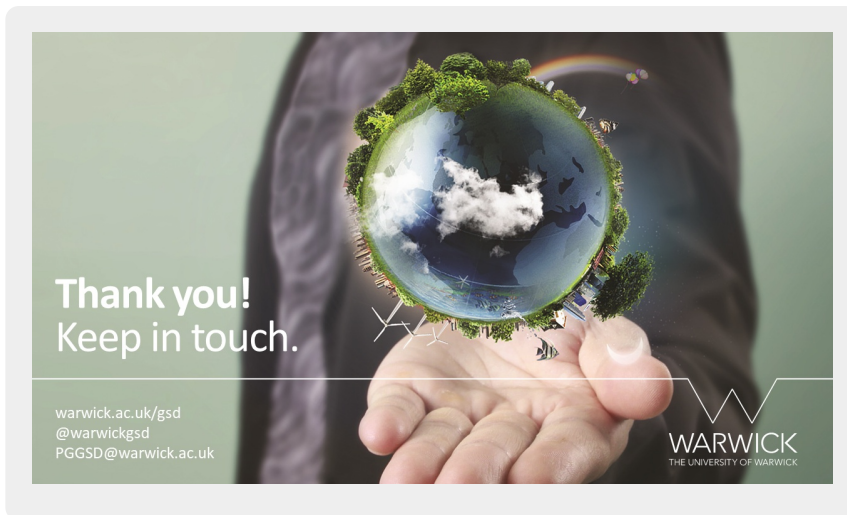


Dr. Those GSD program has a funding platform (scholarship)?

We do have scholarships, Mohamed, which you can find on our scholarships pages, as well as on the university pages. Unfortunately, the deadlines are passed for this year - but please take a look if your interest is for the year after. They are obviously highly competitive - but they are available.



Thank you very much! I will definitely look forward to going out of my comfort zone!



Hi! Also, I'd like to know how intense do you think the course will be

It will be intense, Paridhi, I can't lie. But it will probably not feel as intense as an undergraduate programme because you will have already developed skills to manage workload and you will be studying fewer courses. And your business life must also be challenging - so you will probably find it not as challenging as that in many ways! The key is planning and not being a perfectionist and seeing the programme as part of a process of learning.



Hi! Also, I'd like to know how intense do you think the course will be

The MASc programme is classed as a full-time course so you would expect to spend as much time on your studies as you would doing a full-time job. Time management skills will be needed especially when assessment deadlines are due and then it may feel intense at times.



Thank you everyone for joining us! If you have any further questions please email us:
PGGSD@warwick.ac.uk 😊



Thank you for joining us, everyone! We hope to see many of you in September!



Thank you for joining us, everyone!



Thank you very much for joining us today - please explore GSD, SCFS and Warwick's webpages for further and detailed information. Feel free to email me on the email above if I can help you with anything. Very best wishes, Heather