

# Global Sustainable Development (GSD) at Warwick

**An opportunity for you to speak to our tutors and current students about studying Global Sustainable Development and life at Warwick.**



Hello! Thank you for joining our GSD offer holder live chat today. We're really excited to speak to you this morning! I'm Jess and I'm a Recruitment and Communications Officer in GSD. This is a straightforward questions and answers session, so when you're ready please do tell us what you'd like to find out more about!



Hi everyone, first of all congratulations on getting an offer for GSD! We can't wait to meet you all. My name is Dr Peter Dwyer and I am the Director of Undergraduate Studies and I also teach in the department. I will be joined today by Sambhaviy Kumaresan (Sam) who is a final year single honours student. Also joining us is Dr Alastair Smith, Dr Nick Bernards and Dr Jess Savage who all teach in the department and are Admissions officers for a range of joint honours degrees. We are supported as ever by Jess Holt our Recruitment and Communications Officer.



No question is too small or too big and if we can't help we can find someone who will!



Morning everyone, and welcome!



Good morning!



Do single honors students need to take modules outside the department to get their credits to 120 for the year or if they wanted to can they do everything from GSD? Thanks



Hello! I was wondering if it was normal that I haven't received any email concerning what my fee status will be at Warwick university yet? Thank you



Good morning everyone, I'm Tumi. I would like to find out what the job market is like for Global sustainable development. I'd also like to know if having a joint honors degree will affect my employability as compared to someone with a single honors degree



Good morning everyone! I was wondering, what are the different ways we will be assessed?



Good morning! I'd like to know about the experience of studying in a small city, I've always lived in a big one and don't know what to expect from student life at Warwick.



Morning everyone. I'm Alastair Professor of Radical Change ;)



Do single honors students need to take modules outside the department to get their credits to 120 for the year or if they wanted to can they do everything from GSD? Thanks

Hi Kirsty, you have to take 60 CATS worth of core modules in year one and you can choose other GSD modules and from different modules elsewhere in the University as long as they have some connection to GSD issues.



Hello! I was wondering if it was normal that I haven't received any email concerning what my fee status will be at Warwick university yet? Thank you

Hi Amanda, I hope you're doing well! Thank you for your question. We'd advise that you get in touch with the Student Finance team about this as they'll be best placed to answer: [studentfees@warwick.ac.uk](mailto:studentfees@warwick.ac.uk)



Good Morning, hope everyone is healthy and well! I am looking to apply for the GSD and Business Studies course, and was wondering what the balance between GSD and Business was. Is the course more directed towards GSD? Or is it more directed towards business? What is the balance between the two ?



Hello, I had a question regarding the optional modules for the course I applied for, Politics, International Studies and GSD. Would the optional modules for the course have an interdisciplinary aspect of GSD and International studies?



Hi everyone, I was wondering what the options for the year abroad were for economics and gsd?



Good morning everyone, I'm Tumi. I would like to find out what the job market is like for Global sustainable development. I'd also like to know if having a joint honors degree will affect my employability as compared to someone with a single honors degree

Morning Tumi,

The honest answer is that it depends on what you want to do after you graduate. A number of our students have gone on to work in a variety of fields, with some working with the UN and other large bodies, but also in start-ups etc. The list is endless! We also have a number of students go on to further study both at Warwick and other universities around the world. In terms of the joint degrees and single honours, again it varies. The joint honours degrees have been designed to make you fully conversant in both topics, while the single honours programme can offer more variety and opportunities to target your study to a particular skill set.



Good morning everyone! I was wondering, what are the different ways we will be assessed?

Hi Mary. We have a huge variety of assessment. You can find out about each and everyone on the webpages for the modules. However, as some examples, with me you will be taught to write a professional policy briefing, and pitch it to a decision maker, then you will be assessed on that - while at the same time showing your knowledge of environmental principles. You will then role play a pitch to get someone interested in reading your work. Elsewhere, you will design visual campaigns for change, undertake systems map analysis, write conference papers, essays, and undertake simulations. Everything we do is designed to mirror real world tasks in one way or another. It's the most exciting assessment diet I have ever seen in HE ;)



Hiya, I was wondering about the psychology and GSD degree - I'm aware it's a 50,50 split - I was wondering what the GSD part of the course entails - Is it similar to human geography in some ways? Is it a good fit with psychology?



Good Morning, hope everyone is healthy and well! I am looking to apply for the GSD and Business Studies course, and was wondering what the balance between GSD and Business was. Is the course more directed towards GSD? Or is it more directed towards business? What is the balance between the two ?

Hi Oliver, we are all well and thank you for asking. Your tile will be split 50-50 between GSD and Business Studies in the first year as you have to complete the core modules from each component part of your degree. In the follwoing years you will get more choice about what other non core modules you can study.



Hi everyone, I was wondering what the options for the year abroad were for economics and gsd?

Morning :)  
Study abroad options are really broad for all of our programmes. You can either study abroad at Monash in Australia for the second semester of your second year, and have that make up a part of your three year degree, or alternatively you can visit a different University for up to a year, and add a year on to your programme. There is an extensive list of options here, and it's something we would help you figure out.



Hello, I had a question regarding the optional modules for the course I applied for, Politics, International Studies and GSD. Would the optional modules for the course have an interdisciplinary aspect of GSD and International studies?

Hi Osamu. The optional modules in other departments vary in the degree to which they are interdisciplinary. However, all the GSD in house options are highly interdisciplinary, yes. Is interdisciplinarity something that appeals to you?



Good morning! I'd like to know about the experience of studying in a small city, I've always lived in a big one and don't know what to expect from student life at Warwick.

Hi Isabel! My experience growing up has been in a big city as well and I definitely underestimated the experience at Warwick. I have loved having the more slowed down life here because there aren't as many distractions. However, if I ever did want to go out, there are plenty of places to explore and things to do. Also, London is just about an hour or so away by train so its a nice escape from time to time if that's what you'd like. Hope this helps! :)



Morning all. I've got an offer for History and GSD. Due to it being a joint honours degree, does this mean the selection of modules is limited, and that I can only pick modules of which have a distinct overlap, or is there as broad a selection as there would be for a single honours? Thanks in advance!





Hiya, I was wondering about the psychology and GSD degree - I'm aware it's a 50,50 split - I was wondering what the GSD part of the course entails - Is it similar to human geography in some ways? Is it a good fit with psychology?

Hi Keira, yes it is a 50-50 split. In year 1 you take 4 GSD core modules, the Economic Principles of GSD, the Social (Sociological/Political) Principles of GSD, the Environmental Principles of GSD and then GSD Research Project. In some ways it is similar to Social Geography but it differs in that we draw on a range of academic disciplines in all of our teaching.



Morning all. I've got an offer for History and GSD. Due to it being a joint honours degree, does this mean the selection of modules is limited, and that I can only pick modules of which have a distinct overlap, or is there as broad a selection as there would be for a single honours? Thanks in advance!

Hi Louis, great that you could join us. You only need to select options that are congruent with GSD. Therefore, as you can hopefully imagine, you can choose pretty much anything across the university, depending on prerequisites. So yes, you can take options in colonial and working class history to understand the historical structural factors driving inequality, but then you can take a language to help your internationalisation opportunities, read business process to think about closed loop economies, participate in theatre modules to reflect on the role of art and performance in bringing about radical positive change. How does that sound to you?



Thank you for your questions so far! As we've had quite a few questions about our joint honours courses, we'll play some videos from our ambassadors about their experience with these :)

### Philosophy and GSD: Elizabeth



<https://youtu.be/A4t6uTkNaxY>



Thank you for your response. I'd also like to know if there is assistance available for the transition from university to the world of work.



How can we access the video please?



Hello everyone, I was wondering what is the type of projects that students are able to do in GSD courses?



How can we access the video please?

Hopefully it's now playing in the chat, you can also access it here: <https://youtu.be/A4t6uTkNaxY>

### **Philosophy and GSD: Elizabeth**

The University of Warwick is focused on uncovering endless possibilities. For our students. For our academics. For the world. Our curiosity moves us to const...



Thank you



That sounds great, thanks Alastair!



Thank you for your response. I'd also like to know if there is assistance available for the transition from university to the world of work.

Hi Oluwatumilara, great to meet you! We have a dedicated Placement and Employability Officer in the School - with expertise in the area of GSD. Se is lovely and has a fantastic network of contacts and a wealth of information. She also supports students undertaking the option to work for a year placement as part of their degree, and also teaches a certificate of Employability, to further support students to bridge into role where you can make a radical difference to sustainability of human development. We also think about employability across the curriculum: all assessments are related to real world skills, such as writing policy briefings, and we help you promote yourselves by offering to publish the best work, you can see examples here:

<https://warwick.ac.uk/fac/arts/schoolforcross-facultystudies/gsd/engagement/studentresearch/policiesandbriefings/>

### **Briefings and Policy Pitches - Student Research - GSD**

Students who take our first year module Environmental Principles of Global Sustainable Development are required to research and present professional Policy Briefings. Discover the very best of our students' work in this policy briefs and pitches platform.

## Politics, International Studies and GSD - Hollie



<https://youtu.be/c5RspG-Rk3Y>



That sounds great, thanks Alastair!

Nice, glad you are up for the challenge :)  
Interdisciplinary learning and working is hard work for sure, but its something we desperately need in our world in order to escape the continued limitations of current development processes. You'll emerge with a totally different way of thinking about everything - that is if you study hard and we do our job right ;)



Thank you Sambhaviy! I would also like to know more about the international students at Warwick. What are the ratios of international to home students and staff? Are there international students' societies?



Hello everyone, I was wondering what is the type of projects that students are able to do in GSD courses?

Hey there, there are loads of projects that you will have to carry out such as the GSD Research Project in your first year. This is an opportunity for you to work with a group of your peers to carry out research on a particular topic and produce a research paper or even a creative submission that best suits your topic (this could range from videos, exhibitions, or even board games). There will be more projects as you progress so if you are really into that then you can choose modules which have assessments that involve projects. Hope this answers your question! :)



Thank you

Do you have any thoughts about the type of work you might like to do at this stage? (Though I appreciate you might not yet have thought about this in too much depth)



We're now playing a video from Hollie, a Politics, International Studies (PAIS) and GSD student who graduated last year. The link to Hollie's video is here: <https://youtu.be/c5RspG-Rk3Y>

### **Politics, International Studies and GSD - Hollie**

The University of Warwick is focused on uncovering endless possibilities. For our students. For our academics. For the world. Our curiosity moves us to const...



Do you have any advice on accommodation in terms of what might be a convenient location for GSD students?



Thank you Sambhaviy! I would also like to know more about the international students at Warwick. What are the ratios of international to home students and staff? Are there international students' societies?

Hi Isabel, it is hard to put precise figures on it, but we are a very international degree. We were just chatting about this and we would say anecdotally over 50% of GSD students are not from the UK.



Thank you Alastair, I'm not a hundred percent sure yet but I think at some point, I'd love to work for or establish a non profit organization. Or work with the UN or other organizations towards a more sustainable way of living and working. I would love to be able to apply that wherever I find myself in the world , particularly the more social and psychological aspects as these are where my passion is strongest at the moment.





As you know, we have our final-year single honours GSD student Sam in this chat with us today 😊 Sam recently put together a video for us on one of our GSD modules. I'll play this for you now and you can access this video here:

<https://youtu.be/vOcSEFbNhal>

### **GSD Optional Module: Realising Sustainable Development**

Final-year single honours GSD student, Sambhaviy, tells us about the honours-level optional module 'Realising Sustainable Development'.



## GSD Optional Module: Realising Sustainable Development



### **Realising Sustainable Development**

<https://youtu.be/vOcSEFbNhaI>



Do you have any advice on accommodation in terms of what might be a convenient location for GSD students?

Hey Kirsty, in my experience, accommodations that are on central campus are the best in terms of convenience such as Rootes, Bluebell, Tocil, Claycroft, etc. However, apart from Westwood, I would say that every other accommodation is not more than a 15 mins walk to our classes so its not too bad. Hope this helps :)



Thank you Sambhaviy :)



Thank you Alastair, I'm not a hundred percent sure yet but I think at some point, I'd love to work for or establish a non profit organization. Or work with the UN or other organizations towards a more sustainable way of living and working. I would love to be able to apply that wherever I find myself in the world , particularly the more social and psychological aspects as these are where my passion is strongest at the moment.

That sounds very valuable! Here at Warwick many of our students have participated in the Enactus program, where they have been developing social enterprise ideas: one example being Mama's Kitchen, through which students partnered with a shelter for female refugees cooking culturally relevant foods, to provide better nutrition for the staff and students of GSD, serving the delicious food once a week in our common room :) You might also want to check out the work Hollie (who was in the last video) did with Warwick Cup - to promote a reusable Cup scheme on campus. All these things were done by students as a way to learn about setting up organisations with a social purpose. Some projects do fail, many work very well and make an immediate difference, but it all helps our students learn for the longer term. Drop me a line if you join us and we can connect you up!



You can access all of our videos and transcripts for these via the following link:

<https://warwick.ac.uk/fac/arts/schoolforcross-facultystudies/gsd/prospectivestudents/undergraduate/usefulresources>

### **Useful Resources**

Our undergraduate brochure provides information about our Department, our single honours course and joint honours courses, modules, studying abroad, and professional development opportunities.



Thank you Alastair, I'm not a hundred percent sure yet but I think at some point, I'd love to work for or establish a non profit organization. Or work with the UN or other organizations towards a more sustainable way of living and working. I would love to be able to apply that wherever I find myself in the world , particularly the more social and psychological aspects as these are where my passion is strongest at the moment.

Just following up on what Alastair has said, you can read about Warwick Cup here:

<https://warwick.ac.uk/fac/arts/schoolforcross-facultystudies/gsd/gsdnews/warwickcuplaunch>

### **Warwick Cup launch - GSD - University of Warwick**

On Monday 24 February 2020, Warwick Cup launched its reusable cup sharing system at Curiosity, one of the food and drink outlets on campus. The launch was a great opportunity to celebrate the hard work put into this project by the students involved and to find out more about the initiative.



Do let us know what you'd like to hear more about - teaching methods, student support, societies... we're here to help 😊

## GSD Core Module: Environmental Principles of Global Sustainable Development



### **Environmental Principles of GSD**

<https://youtu.be/MnU1eywHTNE>



Meanwhile, here's a video from student ambassador Ismini, talking about one of our first-year core GSD modules



What different assessments methods are there?



How is the student-teacher relationship at Warwick?



Thank you so much, Alistair and Jess. I'm excited to learn more!



How is the student-teacher relationship at Warwick?

Hi Isabel, for me it has been a very pleasant relationship with my lecturers and tutors who have been very supportive and helpful with both academic and personal issues. They are easy to get along with and are always happy to help. Hope this answers your question :)



What different assessments methods are there?

In GSD, it varies quite a lot by module, you can get some sense from the different module webpages here: <https://warwick.ac.uk/fac/arts/schoolforcross-facultystudies/gsd/currentstudents/modules/>. We generally don't have many exams, and many modules will have a mix of different assessments. If you're on a joint degree it depends a lot on which partner department you're with.

#### **Modules - GSD - University of Warwick**

Undergraduate core and optional modules available in the Global Sustainable Development Department at the University of Warwick.



What's the work/life balance like with a joint degree? Are there clashes between the times in which lectures and seminars are held? If so, how are they sorted?



In the video just now, Ismini was talking about the policy brief assessment. You can view some of our students' policy briefs and pitches online here:  
<https://warwick.ac.uk/fac/arts/schoolforcross-facultystudies/gsd/engagement/studentresearch/policiesandbriefings/>

### **Briefings and Policy Pitches - Student Research - GSD**

Students who take our first year module Environmental Principles of Global Sustainable Development are required to research and present professional Policy Briefings. Discover the very best of our students' work in this policy briefs and pitches platform.





What different assessments methods are there?

You can also get a good sense of some of the more applied assessments some of our students have done here:

<https://warwick.ac.uk/fac/arts/schoolforcross-facultystudies/gsd/engagement/studentresearch/#Classroom>

### **Student Research - GSD - University of Warwick**

Global Sustainable Development at Warwick is not just worrying about the state of the world, but undertaking in-depth research and developing concrete proposals to better manage the development process. Discover some of the research projects our students have been involved in.



How big would our lectures be and how many roughly for the seminar groups? Thank you!



What's the work/life balance like with a joint degree? Are there clashes between the times in which lectures and seminars are held? If so , how are they sorted?

Hey Tumi, If we said it was all plain sailing 100% of the time we'd be lying, but in general we manage to sort out clashes without too much difficulty. There are normally numerous seminar groups each week for each module, so if you do have a clash, it's normally possible for us to help you rearrange one or more classes. if that isn't possible, we do have a few options to minimise any impact. It just might mean a brisk walk between classes from time to time :)



Okay, thank you Jess



Also, due to the pandemic, will our lectures be online or in person? Or is there a blend of the two?



Thank you Sambhaviy =))! Are there volunteer work opportunities for students?



How big would our lectures be and how many roughly for the seminar groups? Thank you!

Honestly, it varies by module. You may also notice a difference between departments if you're taking a joint degree. Within GSD you might have some larger lectures with your whole cohort, but we limit seminar sizes to roughly 20 students max, to make sure that you still get the personal contact time you need.



Also, due to the pandemic, will our lectures be online or in person? Or is there a blend of the two?

At the moment, we're adjusting regularly to keep up to date with regulations. Over the last year, all lectures have been done online with seminars a mix of face to face and online depending on restrictions. It's likely that there will be some degree of blending, although at the moment it's a bit hard to predict



Okay that sounds great thank you Jess :)



Okay, thank you Jess



We're just approaching the final 15 minutes of this session. Thank you for your brilliant questions so far!  
- Please do keep them coming



Thank you Sambhaviy =))! Are there volunteer work opportunities for students?

Hi Isabel, yes there are lots of opportunities. You can volunteer in a number of ways, firstly by speaking with Bodrun our GSD based Employability Manager, or you can chat to students in the various GSD and other student societies that have lots of links and there are also opportunities with university schemes such as Warwick in Africa:

<https://warwick.ac.uk/giving/projects/wia/>

### **Warwick in Africa**

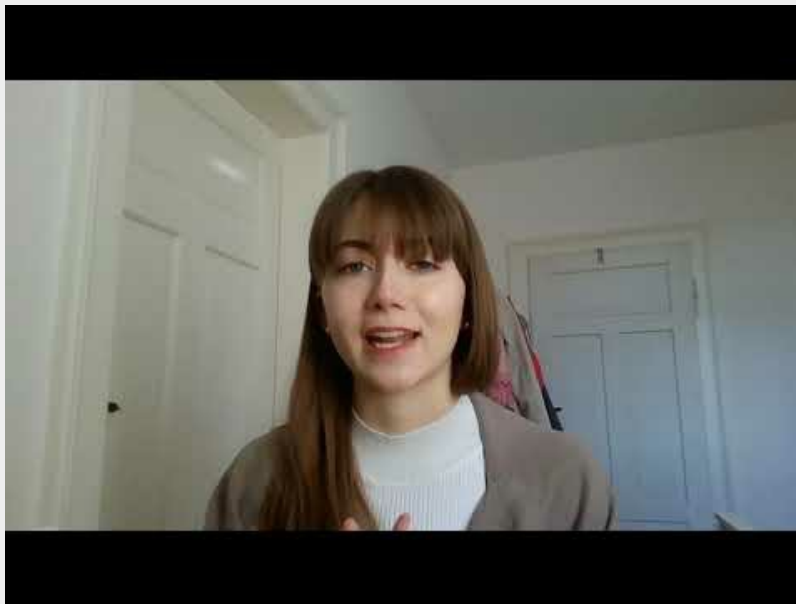
Our innovative, life-changing project which is transforming lives from the UK to Africa.



We're just approaching the final 15 minutes of this session. Thank you for your brilliant questions so far! - Please do keep them coming

While you think about what else you might want to ask, here's a video from student ambassador Kat, talking about one of the optional modules in GSD

## GSD Optional Module: Human Rights and Social Justice in Latin America and the Caribbean



### Human Rights

<https://youtu.be/pVJlevR1JBk>



How big would our lectures be and how many roughly for the seminar groups? Thank you!

Hi Kirsty, it depends on the module. Lectures on most of our core modules would be 100-120 students, but other classes are typically smaller. It varies a lot though -- some modules have 15-20 students in total, others are in the 60-80 range. All of our classes in GSD will have seminars, where you'll be in groups of 15-20. It may be different on partner department classes if you're on a joint degree. The big classes in Econ or Politics, for instance, have 500 or so students. Although they usually have smaller seminars to accompany lectures as well.



In regards to assessments for joints honours, will they be amalgamated between the two subjects or will it be separate for the most part? Thanks



Thank you Peter!! I would also like to know, are course transfers allowed? If I were to change, for example, from economics and GSD to psychology and GSD would this be possible?



If anyone needs any more inspiration to join our degree, here is something that reminds me of the importance of our work in GSD:

<https://youtu.be/eRLJscAlk1M>

### **Dear Future Generations: Sorry**

An Apology Letter to Future Generations.  
Sorry. TEXT ME: 314-207-4482 URGENT:  
YouTube won't show you my NEW videos UNLESS  
you TURN ON MY NOTIFICATIONS?...





In regards to assessments for joints honours, will they be amalgamated between the two subjects or will it be separate for the most part? Thanks

Hi Louis, for all joint degrees you'll take half your classes in GSD and half in the joint department. You'll definitely have a cohort of students on the same joint degree who'll be in many of your classes in the partner department, but they're run separately. There's a member of academic staff serving as liaison officer in both GSD and in the partner department for each of our joint degrees to help you navigate between departments if needed.



Also, I wanted to ask if it's true that GSD students get to wear a different graduation gown because it is a BAsc



That's great Nicholas, appreciate it!



Also, I wanted to ask if it's true that GSD students get to wear a different graduation gown because it is a BAsC

It is indeed! :) And they are beautiful: BAsC Simple shape. In black corded rayon fully lined and bound on the cowl and neckband with cerise and blue taffeta

<https://warwick.ac.uk/services/gov/calendar/academicdress/>

### **1.8 Academic Dress**

1.8 Academic Dress - University Calendar



That's exciting!



Thank you Peter!! I would also like to know, are course transfers allowed? If I were to change, for example, from economics and GSD to psychology and GSD would this be possible?

Hi Isabel, that is possible but it depends on a number of factors. For example, in the first 3 weeks it may be possible, but only if the partner department is also willing to take you and you have the entry requirements. After which we do not encourage people to change because you will have missed so much work. This is why you need to think very carefully about your choices.



GSD: Meet our team



<https://youtu.be/Q1eYn1dKDe0>



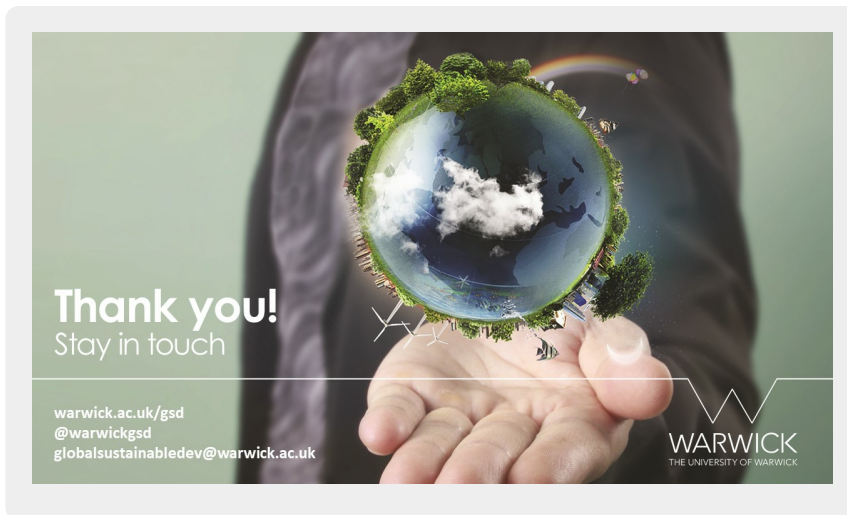
Okay, thank you Peter =)



Now that we're at the final five minute mark of this session, we'll play our 'Meet our academics' video. Jess and Alastair who you've been talking to today are featured :)



Is there a reading list?



Is there a reading list?

Each module has a reading list and you are assigned tasks each week before workshops. But Jess Holt has been working on a public recommended reading if you wanted to make a head start :) I'll ask her if its ready yet...



Thank you



Thank you so much for answering our questions and for you availability!!



Thank you!!



This has been great, thank you!



Great to meet you all, hope to see you all soon!



Thank you!



Is there a reading list?

Just following on from what Alastair has said, you can view our recommended readings for offer holders here:

<https://warwick.ac.uk/fac/arts/schoolforcross-facultystudies/gsd/prospectivestudents/undergraduate/offerholder/homepage-2021>

### **Homepage**

We asked our student ambassadors to tell you about some of the modules in the GSD Department. Please note, these videos provide a personal account of our students' experiences. Elements of the modules discussed, such as assessment types, may have changed since our students studied these modules. We hope you find their videos useful!



Thanks to you all



Is there a reading list?

And even more to read here:

<https://warwick.ac.uk/fac/arts/schoolforcross-facultystudies/gsd/engagement/bookshelf/>

### **The Bookshelf - GSD - University of Warwick**

Want to learn more about sustainability? See our collection of recommended readings related to global sustainable development.



Thanks all for coming, I hope to see you at Warwick in the fall!



Thank you everyone! It's been great chatting to you. Please do keep in touch with us:

[GlobalSustainableDev@warwick.ac.uk](mailto:GlobalSustainableDev@warwick.ac.uk)



Bye everyone, and if you have any further questions please do not hesitate to email me anytime;

[peter.dwyer@warwick.ac.uk](mailto:peter.dwyer@warwick.ac.uk)



Thanks everyone! Hopefully we will see you all with us soon :)



Thank you everyone! It was great talking to you all.  
All the best! :)



We also have a virtual Offer Holder Open Day coming  
up, so check out your emails for the invite :)