

We are living in an unjust, fragile and geopolitically unstable world. This insecurity is driven by the twin crises of security and the environment (Black et al., 2022). Dealing with these crises requires new ways of 'being, knowing and doing' (Escobar 2018).

GCRF Compass+

Research Impact Forum • 26th Jan 2023

The forum brought together experts from policy, practice and academia to explore ways to more sustainable and resilient communities of relations on local, regional and global levels.

Discussions were centred around three key challenges: **local perspectives** on resilience; **regional challenges** to sustainable governance and how to tackle them; rethinking international support and **global governance** in a pluriversal world. This document outlines the key recommendations as a result of the discussion.

KEY THEME ONE

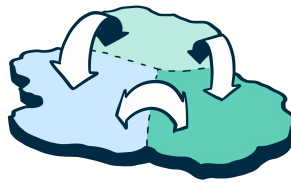
Fostering responsive, agile and adaptable communities



- + Develop multiple plans for the future, including emergency response plans.
- + Communities should have a vision for the future to demonstrate to their constituent parts that they will continue to meet their needs.
- + Communities need resources to achieve their vision.
- + Create a resilience index to measure and quantify community resilience and policy success.
- + Ensure community voices are heard through open communication and raising awareness of the policy making process.

KEY THEME TWO

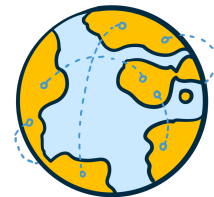
Tackling regional challenges to sustainable governance



- + Policy recommendations for new institutions must be grounded firmly in empathetic leadership and bottom-up decision making rather than top-down decision making.
- + Promote community integration/exchange to foster regional resilience.
- + Ensure regional institutional arrangements are objective-focused.
- + Evaluate whether and how regional perspectives and initiatives on resilience integrate with global perspectives and can be inter-compatible with national communities.
- + Focus on environment-centric approaches.

KEY THEME THREE

Embedding resilience in global governance institutions



- + We need to reconcile diversity.
- + We need more inclusive governance structures.
- + We need more internationally balanced governance structures.
- + We need more responsive, goal-orientated institutions.

To find out more about the forum and the research visit:



bit.ly/WarwickCompassPlus



This research has been supported by GCRF GNCA UKRI