



# What Counts as a Global Education Opportunity? Reimagining Global Learning for an Inclusive Future

Prof Debbi Marais - DPVC International Education

Dr. Massimiliano Tamborrino - Co-Lead WIHEA Internationalisation Learning Circle

Daniel Jones - Co-Lead WIHEA Internationalisation Learning Circle

Dr. Thomas Greenaway - Student Opportunity

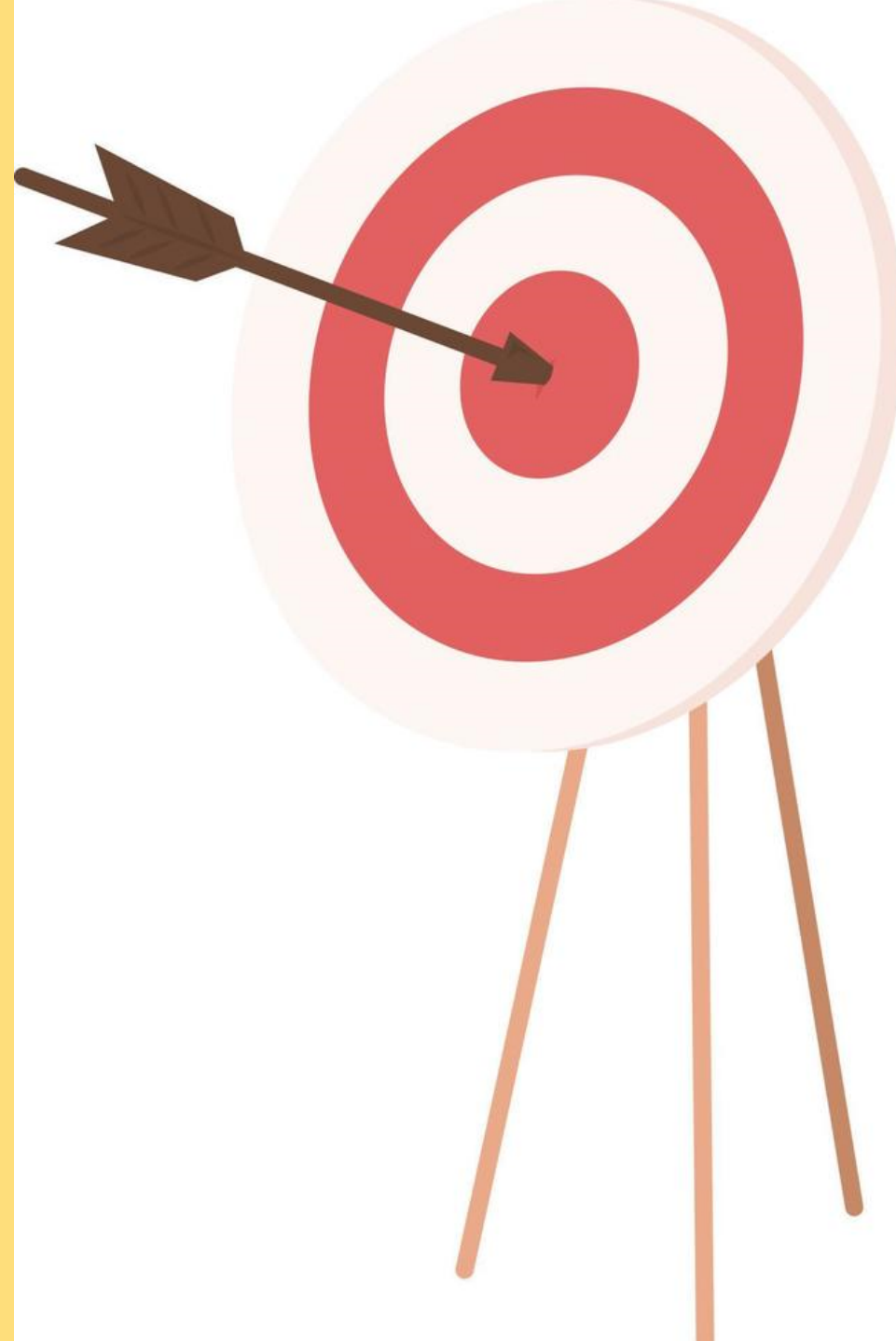
*Sujaya Shrestha - Student Researcher WIHEA Internationalisation Mapping project*

**UNIVERSITY  
OF WARWICK**



# Aims for today's session

1. To collaboratively explore and define the core elements of a global education opportunity appropriate for a diverse and future-focused university.
2. To unpack the principles that might guide a shared institutional definition.



# Challenge

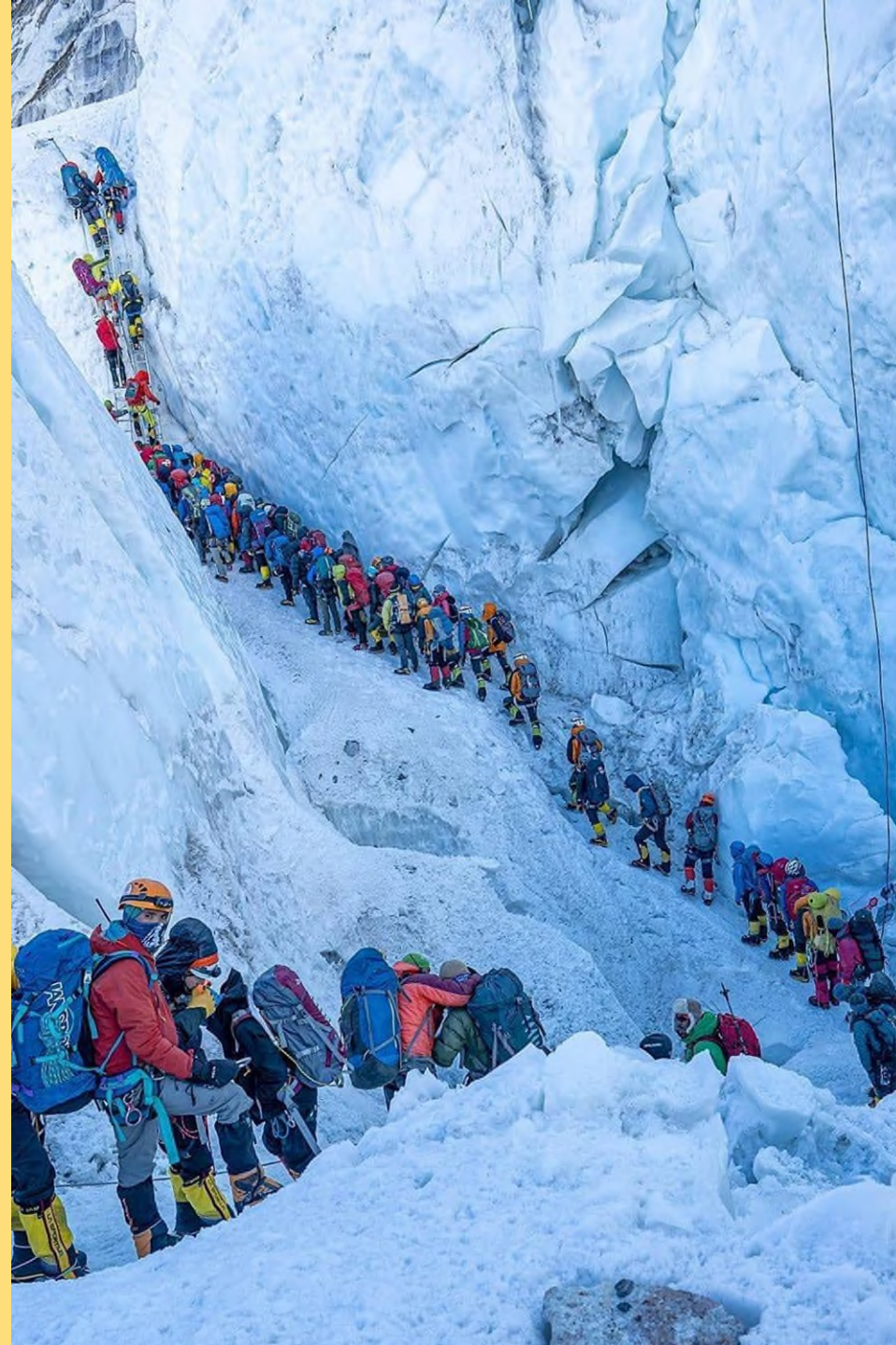
**What exactly constitutes a meaningful global education opportunity?**

## **Traditionally:**

Defined through longstanding models of physical mobility, “global experiences” have often been accessible only to a minority of students.

## **GEO100 aspiration:**

100% of students will have an international experience during their studies at Warwick *defined as physical, blended, or digital; embedded in curriculum or co-curriculum; and inclusive of intercultural, interdisciplinary, and internationally-oriented experiences.*



# WHAT IS GEO100?

## The Global Education & Opportunities (GEO100) Programme

**International experiences are transformational!**

- They develop transferable skills and intercultural awareness
- They support career orientation
- They develop Warwick students as active global citizens

**Our Aspiration:** every Warwick student who wishes will be enabled to have an international experience by 2030

Opportunities could be:

- Immersive (physical mobility)
- Hybrid (involving physical and digital elements)
- Digital (exclusively online)

GEO 100 will scale up existing programmes (enabling more students to take part), and develop new ones.



**UNIVERSITY  
OF WARWICK**

# Currently at Warwick

- **Annually:** approx. 1800 international student placements (physical & virtual) .
- **In the curriculum:** for the 24/25 academic year there were approximately 190 modules with at least one internationalisation element, involving 10,433 students.
- **Co-curricular:** Over 3,600 students did some form of intercultural training at Warwick in the last academic year.

With Strategic University partners



## OUR GLOBAL ALLIANCE

Since 2012, the continued and significant commitment of both universities to the Alliance has resulted in:

OVER 100 JOINT PROJECTS



OVER 700 CO-PUBLICATIONS PRODUCED



JOINT ACADEMIC STAFF AND JOINT PhD IN A BROAD RANGE OF DISCIPLINES



OVER 1,000

STUDENTS ON MOBILITY EXPERIENCES

ATTRACTING SIGNIFICANT EXTERNAL CO-FUNDING



THE ANNUAL INTERNATIONAL CONFERENCE OF UNDERGRADUATE RESEARCH (ICUR), WITH

OVER 2,200 PARTICIPANTS IN TOTAL



ONLINE, PEER-REVIEWED JOURNAL OF UNDERGRADUATE RESEARCH 'REINVENTION'



UNIVERSITY OF WARWICK

# GEO100 'MENU'



**Study Abroad - term/year study/work placements.**



**Short-term mobility - summer schools, language courses, international volunteering, conferences, internships, faculty trips etc.**



**UG research support scheme (URSS) – 6-10w self-directed summer research project.**



**TeamWork – structured international work experience for authentic industry projects.**



**EUTOPIA Connected Community activities.**



**Intercultural Training and internationalization embedded in the curriculum.**



# World Café Guidelines



Entrée

Main Course

Dessert

Doggy bag

Use the 'Tablecloth' 



What experiences (for students) authentically develop a global mindset, intercultural awareness, and engagement with international contexts?



5 min



Half of the table needs to rotate **CLOCKWISE** to another table.

Summarise and discuss points from previous 'course' on the table and change/tweak if needed



5 min



Main  
Course

Which forms of global engagement across Warwick should be or not be acknowledged for the GEO100?



5 min



Half of the table needs to rotate **CLOCKWISE** to another table.

Summarise and discuss points from previous 'course' on the table and change/tweak if needed.



5 min



5 min



Half of the table needs to rotate **CLOCKWISE** to another table.

Summarise and discuss points from previous 'course' on the table and change/tweak if needed.



5 min



Doggy  
bag

How would you reshape what  
global learning looks like in your  
context?



5 min



# Funding Opportunities

## International Collaboration and Opportunities at Warwick

### International opportunities:

- [Monash Warwick Alliance](#)
- [Stellenbosch and Warwick](#)
- [Toronto and Warwick](#)
- [WashU and Warwick](#)
- [VUB \(Brussels\) and Warwick](#)
- [And loads more...](#)

### At Warwick:

- [The Education Fund](#)
- [Warwick Institute for Engagement Funding \(Public Engagement in the curriculum\)](#)



# Plugging slide

Please check out

- [The WIHEA Internationalisation Learning Circle](#)
- [Mapping Internationalisation activities across the university](#)
- [Intercultural Awareness Community of Practice](#)
- [WISE toolkit – supporting international students](#)
- **GEO bid**
- [TeamWork](#)
- [ICUR](#)
- [Internationalisation strategy](#)
- [Education Strategy](#)



# Take it back to practice – reflecting on this session

## THE CORE IDEA

GEO100 is changing the game, with the goal of having 100% of students having an international experience at Warwick

---

## A FIRST STEP TO TRY

Think about what counts towards internationalisation in your context.

---

## ADAPT IT FOR YOUR CONTEXT

What can you change (in the curriculum, co-curriculum etc.) in your context towards the GEO100 challenge?

---

# Our contact details – Please share yours

**Prof Debbi Marais**, [d.marais@warwick.ac.uk](mailto:d.marais@warwick.ac.uk); DPVC  
International Education, WMS, SEM

**Dr. Massimiliano Tamborrino**,  
[Massimiliano.Tamborrino@warwick.ac.uk](mailto:Massimiliano.Tamborrino@warwick.ac.uk), Department of  
Statistics, Co-Lead WIHEA Internationalisation Learning  
Circle

**Daniel Jones**, [Daniel.Jones.5@warwick.ac.uk](mailto:Daniel.Jones.5@warwick.ac.uk), Warwick  
Global Academy, Co-Lead WIHEA Internationalisation  
Learning Circle

**Dr. Thomas Greenaway**; [T.Greenaway.1@warwick.ac.uk](mailto:T.Greenaway.1@warwick.ac.uk),  
Intercultural Training Programme Development Consultant,  
Student Opportunity

**Sujaya Shrestha**, [Sujaya.Shrestha@warwick.ac.uk](mailto:Sujaya.Shrestha@warwick.ac.uk), Student  
Researcher WIHEA Internationalisation Mapping project

