



WARWICK

INSTITUTE OF ADVANCED STUDY

Institute of Advanced Study

Annual Report

2016

Warwick Institute of Advanced Study:
fostering collaboration across disciplines
and subject areas since 2007





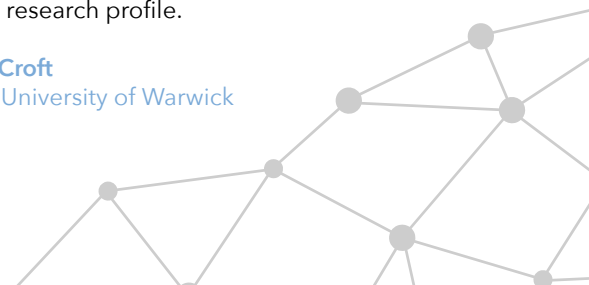
Welcome

By promoting excellence in research, the Institute of Advanced Study (IAS) contributes significantly to Warwick's international reputation. Over the years, the IAS has fostered innovative collaborations with higher education institutions, brought world-leading scholars to campus and helped Warwick academics to develop new and original areas of research.

In 2015, I had the pleasure of chairing the Institute's first annual symposium that showcased the high-quality research produced by a new generation of interdisciplinary researchers at the IAS. The event showed the original and imaginative contribution made by the Institute to the University's research culture.

In close collaboration with Warwick's Global Research Priorities, the IAS is now ready to start a new programme of activities. This will bring researchers from all over the world to our University, thus further enhancing Warwick's global research profile.

Professor Stuart Croft
Vice-Chancellor, University of Warwick





PRO...
CIVE ME A
HAPPY

ACT

11/17/2014





Contents

Welcome

Overview of The Institute of Advanced Study (IAS) 03

Visiting Fellows

International Visiting Fellows 09
Residential Fellowships 19
CARA 20

Interdisciplinary Research Activities

Speculative Lunches 24
Research Networks 26
Vacation Schools 29
Public Engagement 30

IAS Cross-Faculty Projects

Exchanges - The Warwick Research Journal 36
Oral History - Voices of the University:
- Memories of Warwick 1965-2015 38

Supporting Early Career Researchers

Early Career Fellows 41
Academic Careers and Employability (ACE) Programme 42

Picture My Research

Global Research Fellows Postdoctoral Fellows 53

IAS Symposium at The Shard, London

The Future of Interdisciplinary Research 61

About the IAS

Millburn House 65
Cryfield Grange 66
Staff 67
Contacts 68

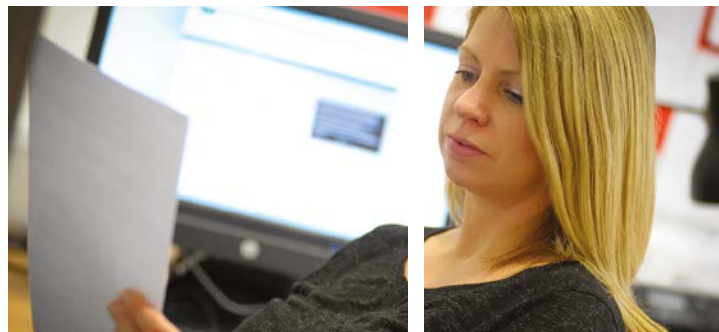
Welcome from the Director of the Institute of Advanced Study

The Institute of Advanced Study (IAS) is a cross-faculty research unit, with a remit to facilitate interdisciplinary engagement within Warwick and between the University and other higher education institutions and partners around the world. Furthermore, in the UK and continental Europe, the Warwick IAS is the only Institute to offer an established cross-faculty training and development programme for early career researchers.

In 2014-15, the IAS was active in a variety of activities involving all faculties. It supported over 100 events, welcomed 20 new Early Career Fellows and provided funding for 60 interdisciplinary and cross-faculty research projects. The IAS at Millburn House is frequently used to host seminars, workshops and network meetings. In the past year the Institute has laid the foundation for wider internal and international collaborations. This Annual Report and the new IAS website provide a summary of the Institute's many initiatives in particular in relation to supporting academic research; engagement with the interdisciplinary postdoctoral community; and the development of University-wide projects.

Supporting Academic research

During the course of the last year, a revised and more flexible funding system allowed the IAS to expand its engagement with Warwick academics. A series of successful Vacation Schools as well as a variety of exciting public engagement and outreach activities took place on campus and at





Warwick in Venice. In 2014-15 eight interdisciplinary Research Networks supported by the IAS organised 28 events involving over 350 members of staff in addition to external speakers and attendees.

In order to facilitate international and cross-sectoral engagement, the Institute welcomed a further 15 International Visiting Fellows from all continents. At the IAS, Visiting Fellows are accommodated at Cryfield Grange and have 24/7 access to office facilities and space to host events in addition to the weekly networking lunches. They are now joined by a number of Residential Fellows whose stay at Warwick cements collaborations with their academic hosts on interdisciplinary and cross-cultural projects.

Postdoctoral engagement

Sitting across all four-faculties, the IAS provides a truly interdisciplinary environment for completed Warwick -PhDs (Early Career fellows) from more than 20 academic departments. Since 2007, the IAS has delivered an Academic Careers & Employability Programme (ACE) for postdoctoral researchers, a programme which has trained more than 160 fellows. The October 2014 cohort of Early Career Fellows saw 90 percent obtain academic and postdoctoral research appointments following the completion of their IAS award.

Early Career Fellows join a group of 14 outstanding Global Fellows appointed by the University in 2012/13 on long-term research contracts. In 2014-15 they collectively published 31 papers and 4 books, and ran 22 separate events. A further cohort of 5 Postdoctoral researchers have since

completed their two-year IAS Fellowships and have secured employment either through university and national fellowship awards, academic appointments or research posts in industry.

University-wide projects

2014-15 saw the completion of a three-year project on the Oral History of the University to coincide with the 50th Anniversary celebrations in 2015. More than 260 interviews were conducted with current and past students, academics, staff and residents of Coventry and Warwickshire who shared their recollections and experiences of how Warwick has impacted on their lives and careers. This project is the largest of its kind ever completed for a higher education institution and its materials are now hosted at the University's Modern Records Centre.

The Institute, in collaboration with the Library, expanded the IAS open access, online research journal Exchanges. Submissions can be made in numerous formats, including critical observations, research articles or as part of our distinctive 'In Conversation' series which provides junior researchers with the opportunity to interview renowned scholars. Previous issues featured interviews with Prof Eric Foner - Pulitzer Prize for History 2011, Professor Michael Levitt - Nobel Prize for Chemistry 2013 and Regius Professor Martin Hairer - Field Medal Winner 2014.

Professor Giorgio Riello

Director, Institute of Advanced Study




CRYFIELD
GRANGE



"The visit enabled me to broaden my research network with other prominent researchers in the UK that have similar research interests."

Dr Michael VanNieuwenhze
International Visiting Fellow
Institute of Advanced Study





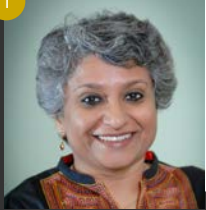
International Visiting Fellows

Since its establishment in 2007, the IAS has been supporting engagement with researchers across the globe through its Visiting Fellowship programme. To date more than 150 International Visiting Fellows have been hosted at Warwick.

Warwick academics are invited through three calls per year to nominate members of the international research community (both academic and cross-sector representatives) to share their expertise with staff and students at Warwick. Fellowships are generally held for at least two weeks and there is scope to be hosted for a full term.

During their visit, award holders run a series of events, engaging with audiences from numerous disciplinary areas in order to interact with a wide cross-section of the University. Programmes of activity typically include workshops, MA/PhD seminars, public lectures, roundtable discussions and early career mentoring.

1



Professor Ashwini Deshpande

Delhi School of Economics,
Delhi University, India

Nominator Dr Sarah Hodges, History

Visited 27 September – 6 December 2014

Professor Ashwini Deshpande is a Professor of Economics at the Delhi School of Economics, University of Delhi, India. Her PhD and early publications have been on the international debt crisis of the 1980s. Subsequently, she has been working on the economics of discrimination and affirmative action issues. She focuses on caste and gender in India, as well as on aspects of the Chinese economy: poverty, inequality, regional disparities and gender discrimination. Professor Deshpande has published extensively in leading scholarly journals and is the author of *Grammar of Caste: economic discrimination in contemporary India* (OUP, 2011) and *Affirmative Action in India*, (OUP, Oxford India Short Introductions series, 2013). Professor Deshpande received the EXIM Bank award for outstanding dissertation (now called the IERA Award) in 1994, and the 2007 VKRV Rao Award for Indian economists under 45.

Professor Deshpande's visit to Warwick saw her participate in a number of events including a lunch and seminar on 'Mixed Method Analysis and The Study of Power in Society', which addressed the following: how is it possible to 'measure' discrimination? Why would anyone ever want to? How is it possible to 'translate', or make mutually intelligible, disparate qualitative and quantitative research methods?

2



Professor Inderpal Grewal

Yale University, USA

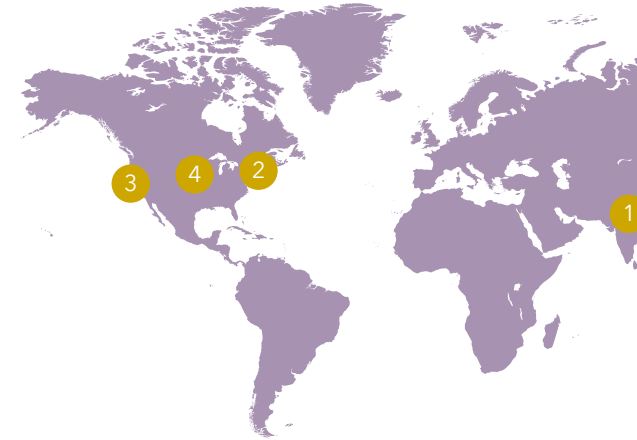
Nominator Professor Shirin Rai, Politics
and International Studies (PAIS)

Visited 29 September – 3 October 2014

Professor Inderpal Grewal is a world renowned scholar in the field of postcolonial Gender Studies. Her work has been influential in the debates in feminist and gender studies across a wide spectrum - transnational feminist theory; gender and globalisation, human rights; NGO's and theories of civil society in addition to theories of travel and mobility. Professor Grewal is the Chair of the Women, Gender and Sexuality Studies Centre at Yale.

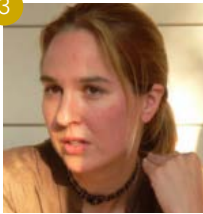
Professor Grewal is the author of *Home and Harem: Nation, Gender, Empire and the Cultures of Travel* (Duke University Press, 1996) and *Transnational America: Feminisms, Diasporas, Neoliberalisms* (Duke University Press, 2005). With Caren Kaplan she has also written and edited *Gender in a Transnational World: Introduction to Women's Studies* (Mc-Graw Hill 2001, 2005) and *Scattered Hegemonies: Postmodernity and Transnational: Feminist Practices* (University of Minnesota Press, 1994). She is currently working on a book length project on the relationship between feminist practices and security discourses.

Professor Grewal hosted a number of events whilst at Warwick addressing themes such as 'Masterclass in Feminist Theory' and 'Security Feminism, Security Mom, and the Soft Power of Empire'.





3



Dr Lisa Surwillo
Stanford University, USA

Nominator
Dr Kirsty Hooper, Hispanic Studies

Visited
30 November – 6 December 2014

Dr Lisa Surwillo is an Associate Professor of Iberian and Latin American Cultures at Stanford University. She is an innovative and influential scholar, whose research proposes new ways of exploring the circulation of ideas about property, empire, race and personhood in the networks connecting 19th-century Europe, the Atlantic and Caribbean. She is a leading voice in the rapidly-developing field of Transatlantic Hispanic Studies, which rejects simple comparativism or bilateral study of the Spanish state and Latin American republics. Her work explores the parameters of the Hispanophone Transatlantic with a particular emphasis on shifting analysis from a search for modernity to an awareness of coloniality.

During her residency at the IAS, Dr Surwillo explored intersections between this project and the work of scholars of the global 19th century who similarly regard the metropolis in light of empire[s]. In doing so, she interrogated theoretical convergences with practitioners of the Oceanic turn in Literature and History. In particular, Dr Surwillo developed research questions that emerged from overlap with scholars of Portuguese Studies and Caribbean Studies at Warwick who have approached these issues from alternate critical positions.

4



Dr Alesha Doan
University of Kansas, USA

Nominator
Dr Alexander Smith, Sociology

Visited
1 – 28 February 2015

Dr Alesha Doan is an Associate Professor and works in the Department of Political Science at the University of Kansas. Her research primarily investigates how the political world intersects with reproductive health policy often creating obstacles for women that limit their ability to lead healthy and fulfilled lives. Dr Doan also examines the central role of gender, race and economic inequality in the creation of reproductive and sexual health policies.

Her first book, *Opposition and Intimidation: The Abortion Wars and Strategies of Political Harassment* (University of Michigan Press, 2007), examines the pro-life movement's use of unconventional political activities to achieve its political goals. Her second book, *The Politics of Virginity: Abstinence in Sex Education* (Praeger, 2008), systematically investigates abstinence-only education and explores the ways in which this policy reinforces social constructions of women, adolescents and sexuality.

Dr Doan was supported by Dr Alexander Smith, Sociology, and visited as part of the University's Global Research Priority on Connecting Cultures sub theme 'Religion, Rights and Social Justice'.

5



Dr Amy Levine

Pusan National University,
South Korea

Nominator Dr Alexander Smith, Sociology

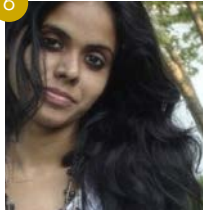
Visited 1 - 28 February 2015

Dr Amy Levine is Assistant Professor in the Department of Global Studies at Pusan National University, South Korea. She has recently written an ethnographic monograph, based on her PhD research, called *South Korean Civil Movements and Organisations: The Hope and Crisis of Pragmatic Transition*, which was published in 2015.

Dr Levine has been awarded a new Professor's Grant to conduct research on 'Climate Pragmatism, Greens and Nuclear Energy Policy in South Korea and the USA'. This research explores attitudes amongst Green activists in both countries towards nuclear energy in the aftermath of the 2011 Fukushima disaster in Japan, which has divided opinion between those who support or oppose arguments for harnessing nuclear power in arresting climate change.

Dr Levine was supported by Dr Alexander Smith, Sociology, and visited as part of the University's Global Research Priority on Connecting Cultures sub theme 'Religion, Rights and Social Justice'.

6



Dr Meena Kandasamy

Chennai, India

Nominator Dr Sarah Hodges, History

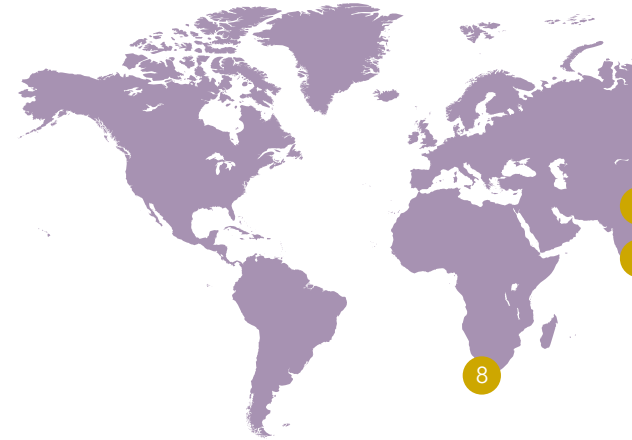
Visited 19 April - 10 May 2015

Dr Meena Kandasamy is a poet, writer, activist and translator. Her work focuses on caste annihilation, linguistic identity and feminism. She has published two collections of poetry, *Touch* (2006) and *Ms Militancy* (2010). Her first novel, *The Gypsy Goddess* was published by Atlantic Books (UK) and Harper Collins, (India) in 2014.

Dr Kandasamy was a British Council - Charles Wallace India Trust Fellow at the University of Kent and a Visiting Fellow at Newcastle University in 2011. In 2009, she was a writer-in-residence at the University of Iowa's International Writing Program (IWP).

Dr Kandasamy has co-authored (with M. Nisar) a biography of Kerala's foremost Dalit revolutionary Ayyankali, and previously, she edited *The Dalit*, a bi-monthly English magazine. She holds a PhD in socio-linguistics from Anna University Chennai and engages in political and literary translation.

During her time at Warwick, Dr Kandasamy spent her time writing a monograph about the Dharmapuri Atrocity (2012) which focuses on the story of a young girl, Divya, who fell in love with a Dalit boy, Ilavarasan.



8



Mr S. Anand

Navayana Publishing Pvt Ltd,
New Delhi, India

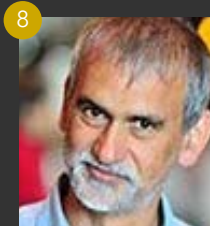
Nominator Dr Sarah Hodges, History

Visited 19 April - 10 May 2015

Mr Anand is the co-author and curator of *Bhimayana* (2011), an award-winning graphic biography of B.R. Ambedkar, illustrated and drawn by Durgabai Vyam and Subhash Vyam. *Bhimayana* was listed among the top five political graphic novels ever published by CNN.com along with Art Spiegelman's *Maus* and Joe Sacco's *Palestine*. It has been translated into six Indian languages and into French, Korean and Spanish.

In 2003, he co-founded Navayana, a publishing house that primarily focuses on issues of caste. After moving to New Delhi in 2007, he worked for Navayana full-time as publisher and worked for several years on annotating and editing B.R. Ambedkar's 1936, *Annihilation of Caste*. He has since been exploring the connections between the lived oral tradition of singing and performing Kabir and its connections to Ambedkar's project of annihilating caste. During this time, he has translated some of the lyric-poems of the 15th century poet-singer Kabir which he explores through poetry performed as song, where the shape-shifting lyric is not sacrosanct.

During his visit to Warwick, Mr Anand presented and discussed some of his ideas to a new audience.



Mr Mike van Graan

Executive Director of the African Arts
Institute, South Africa

Nominator Dr Jonathan Vickery, Centre
for Cultural Policy Studies

Visited 3 - 8 May 2015

Mr Mike van Graan is the Executive Director of the African Arts Institute. He was the founding Secretary General of Arterial Network, a pan-African network active in the creative sector, and its contribution to development and human rights.

Mr van Graan serves as a Technical Expert on UNESCO's 2005 Convention on the Protection and Promotion of the Diversity of Cultural Expressions. After South Africa's historic 1994 elections, he was appointed as a Special Advisor to the minister responsible for Arts and Culture. A celebrated playwright, Mr van Graan was appointed an Honorary Associate Professor in the University of Cape Town's Drama Department. His particular area of interest relates to cultural policy, broadly in the sphere of 'culture and development', and more particularly, to the meaning and relevance of the creative and cultural industries for African, and South African Societies.

During his stay, Mr van Graan tested his recent research and subsequent insights into these themes by engaging with academics and students working in these areas.

9



Professor Gilson Schwartz
University of
Sao Paulo, Brazil

Professor Gilson Schwartz is a leading senior researcher in digital culture and public policy at the University of São Paulo. His 'City of Knowledge' project has spearheaded innovative initiatives which promote an interdisciplinary agenda in Economics, Cultural Policies and Information and Communication Technologies, successfully fundraising for applied projects with government agencies, corporations and media groups. UNESCO highlighted his contribution to the social design of virtual currencies in the field of cultural policies during the Rio+20 Summit (2012).

10



Dr Carlos Falci
Federal University
of Minas Gerais,
Brazil

Dr Carlos Henrique Falci is an Associate Professor at the School of Fine Arts at Federal University of Minas Gerais, Brazil. He completed his PhD in Electronic Literature at the Federal University of Santa Catarina, Brazil and is a member of 1maginari0, a research group that investigates relationships between Art, Science and Technology. He is also a member of Marcel Multimedia Art Research Centre and Electronic Laboratories, working with discussion groups of Marcel. His recent research involves memory and metadata, the production of memory with mobile devices, memory in socio-technical networks, programmable spaces, computational art, and memory of urban spaces.

Professor Schwartz and Dr Falci were supported by Dr Joanne Garde-Hansen, Centre for Cultural Policy Studies and visited Warwick as part of the University's Global Research Priority on Connecting Cultures.

Nominator

Dr Joanne Garde-Hansen,
Centre for Cultural
Policy Studies

Visited

18 May -
9 June 2015

Programme of Events

Monday 18 May - Public lecture (History, Film & TV, CCPS)

Metadata and imaginary places of memory

- ▶ Analysis on some of the projects developed on Brazil and other countries seeking to understand how such narratives appropriate the metadata in a poetic way, creating imaginary places of memory.

Wednesday 20 May - CCPS seminar

Actor-network theory and cultural memory in programmable environments: an analysis of 2013 June manifestations on Brazil

- ▶ How can we perceive the use of metadata in the construction of cultural memory?

Wednesday 27 May - Warwick Institute for Sustainable Cities (WISC) seminar

Hidden memories of San Francisco River and Rio das Velhas River, Brazil

- ▶ Two projects were presented to discuss the creation of e-books developed as games/books for mobile devices, whose content is based on life stories of the San Francisco river. Second, a discussion on an extensive project of revitalization of the Rio das Velhas River whose watershed is responsible for supplying the capital of Minas Gerais state.

Thursday 28 May - IAS workshop

Academic Careers and Employability (ACE) Programme

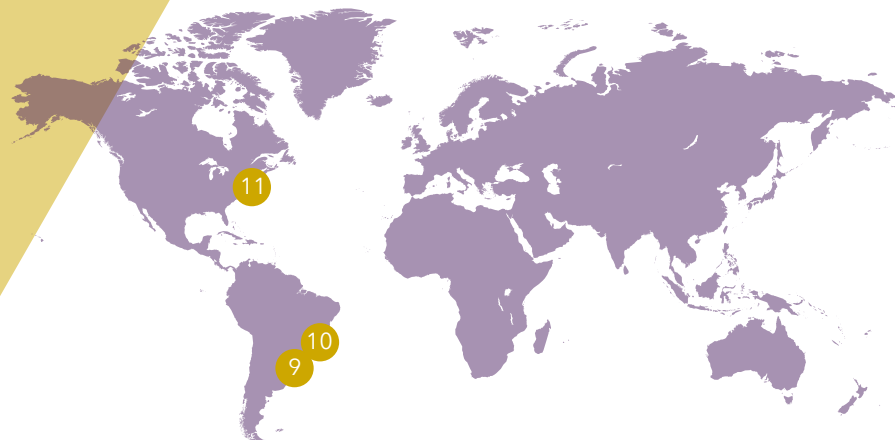
Friday 29 May - Hispanic Studies/Connecting Cultures GRP seminar

Human memories and public places

- ▶ How are public places kept alive and inhabited? These apparently simple questions raise complex discussions about role of governments, community centers, non-governmental institutions in creation and preservation of public places memories.

Wednesday 3 June - Brazil Partnership Fund Proposal meeting

Flood memory as metadata - scoping a new proposal between UK and Brazil.



Professor Samuel Moyn
Harvard University, USA

Nominator
Dr Charles Walton, History

Visited
25 – 29 May 2015



Professor Samuel Moyn is a Professor of Law and History at Harvard University. He earned a doctorate in modern European History from the University of California-Berkeley in 2000 and a Law degree from Harvard Law School in 2001. He returned to Harvard Law School after 13 years at Columbia University's History department. He has written several books in the fields of European intellectual history and human rights history, including *The Last Utopia: Human Rights in History* (Harvard University Press, 2010).

During his visiting fellowship at IAS, Professor Moyn collaborated with the Human Rights Network project ('Rights, Duties and the Politics of Obligation: Economic and Social Rights in History') in examining the relationship between political economy and human rights around the mid-20th century.

Dr Walton and Professor Moyn received a Leverhulme International Network award that will allow them to continue the work begun during the IAS fellowship.

Programme of Events

Tuesday 26 May

- ▶ Workshop: 'Writing the history of socio-economic rights'.

Wednesday 27 May

- ▶ Workshop: 'Writing the history of socio-economic rights' (continued)
- ▶ One-to-one PhD session
- ▶ Q&A with Law, History, Politics postgraduates
- ▶ Keynote address: 'Croesus's world: human rights and the age of inequality'.

Thursday 28 May

- ▶ IAS lunchtime talk: 'Career opportunities'
- ▶ Roundtable discussion: 'The future of human rights'

12



Dr Michael VanNieuwenhze

Indiana University, USA

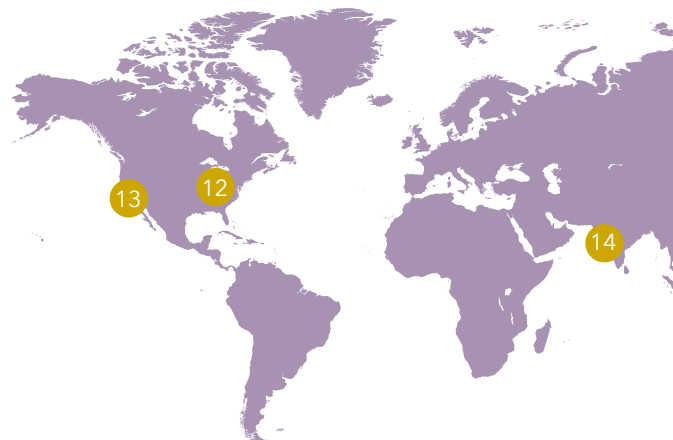
Nominator Professor David Roper, Life Sciences

Visited 7 June – 17 July 2015

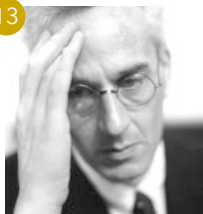
Dr Michael VanNieuwenhze is Associate Professor in the Department of Chemistry at Indiana University, where he is an expert in peptide antibiotics and bacterial cell wall biosynthesis. Dr VanNieuwenhze spent eight weeks at Warwick, hosted by Dr David Roper (Life Sciences) and Professor Tim Bugg (Chemistry).

During his visit, Dr VanNieuwenhze spent time with researchers sharing his knowledge of methods and techniques and participating in a series of lectures and workshops, which also involved academics from other institutions.

His expertise provided great synergy with members of the research community at Warwick, enabling the consolidation of existing collaborations and the initiation of new partnerships to drive forward research in the globally important area of antimicrobials.



13



Professor Joshua Clover

University of California, Davis, USA

Nominator

Dr Jonathan Skinner, English

Visited 8 – 12 June 2015

Professor Joshua Clover, Department of English at the University of California, Davis, works in political economy, crisis theory and forms of revolutionary struggle. His books include *The Totality for Kids* (2006), *1989: Bob Dylan Didn't Have This to Sing About* (2009), and *Red Epic* (2015). Professor Clover specializes in 20th century anglophone poetry and poetics, political economy, crisis theory, with an emphasis on political struggle in literature, environment, feminism, and cultures of finance.

Professor Clover has two books of cultural theory, routed through film and popular music respectively. His book *Riot. Strike. Riot: the New Era of Uprisings*, a theorization of riot as historical phenomenon which opens onto a revised history of capital accumulation, is forthcoming from Verso in 2016. He has contributed articles to journals from *Representations* to *Critical Inquiry*, keeps a column at *The Nation*, and serves on the Editorial Board of *Film Quarterly*. Forthcoming work focuses on poetry and the transformation of the world-system. Professor Clover has also published three books of poetry, most recently *Red Epic*, which have been translated into several languages and appears in many anthologies including the Norton Introduction to Literature.

Professor Clover hosted a number of events whilst at Warwick addressing themes such as 'Riot Now: What We Look at When We Look at Riots'. In 2016 he will be a Visiting Professor at the University of Paris Diderot.

15



14



Professor Kapil Gupta

Indian Institute of Technology,
Mumbai

Nominator Professor Ian Guymer,
School of Engineering

Visited 15 - 26 June 2015

Professor Kapil Gupta, Department of Civil Engineering at IIT, Bombay, works on developing flood resilient cities in India and sits on various committees of the Government of India, Ministry of Urban Development / City Municipal Corporations, such as Mumbai, Hyderabad, Delhi, Kolkata and Guwahati. He is also associated with the World Bank/UNDP/UNESCO for developing flood resilient cities and was the Indian principal investigator for the recently completed CORFU (Collaborative Research on Urban Flood Resilience), under the EU FP7 project.

Professor Gupta has delivered keynote talks at various international conferences and is associated with early warning systems for both cyclones and pluvial flooding, and the subsequent evacuations at both the national level and city level in India.

In keeping with the objectives of the Centre for Urban Science and Progress (CUSP) partnership, Professor Gupta's visit to the IAS aimed at strengthening the partnership and identifying future joint collaborations, especially for urban flood disaster risk reduction and making the cities more sustainable.

15



Professor Justin O'Connor

Monash University, Australia

Nominator


Dr Eleonora Belfiore, Centre for Cultural
Policy Studies (CCPS)

Visited 25 August - 17 Sept 2015

Professor Justin O'Connor is Professor of Communications and Cultural Economy at Monash University. Until 2012 he was Professor in the Creative Industries Faculty, Queensland University of Technology, Brisbane, Australia and visiting Chair, Department of Humanities, Shanghai Jiaotong University. From 2006 -2008 he was Professor of Cultural Industries at the School of Performance and Cultural Industries, University of Leeds, and between 1995-2006 he was Director of Manchester Institute for Popular Culture at Manchester Metropolitan University.

Professor O'Connor is currently one of 20 international experts appointed under the UNESCO/EU Technical Assistance Programme in support of the '2005 Convention on the Protection and Promotion of the Diversity of Cultural Expressions'. He is working with Mauritius to develop a national cultural industries strategy and with Barbados on developing a programme on cultural entrepreneurship.

Working in the field of cultural economy and cultural policy, and closely involved in the work of UNESCO around the '2005 Convention on Diversity of Cultural Expression', Professor O'Connor visited Warwick to lead the Warwick Commission on Cultural Value. The existing collaboration around this will be developed into new projects as part of the Commission follow up, and involve other work in CCPS around cultural economy policy.



"The work in Warwick included intense discussions of already achieved results, conduction of new computational experiments during the stay and the discussion of the emerging results. The joint publication was significantly strengthened by these discussions."

Dr Ralf Tonner
IAS Residential Fellow

Residential Fellowships

Complementing the International Visiting Fellowship activity is the Residential Fellowship award scheme, which was launched in January 2015.

In recognition of the extensive external research collaborations fostered by Warwick academics, this scheme enables research staff to host external partners at the University to fast-track and deliver a defined joint interdisciplinary research output during the course of their stay.

Three fellows were able to undertake their residency during the first year of the scheme with a further 10 fellows due to arrive in 2015/16.

16 February - 20 March 2015

Dr Paul Komba,

Faculté de Droit, Université de Lubumbashi, Democratic Republic of Congo

University of Warwick Nominator: Dr Ngianga Kandala, Warwick Medical School

Visit output: to finalise and submit book manuscript for Springer.

1 - 5 June 2015

Dr Ralf Tonner

Philipps Universität Marburg, Germany

University of Warwick Nominator: Dr Adrian Chaplin, Chemistry

Visit output: to prepare and submit two manuscripts.

3 - 11 July 2015

Dr Tomoya Konishi

Centre for Collaborative Research, National Institute of Technology, Japan

University of Warwick Nominator: Dr Gavin Bell, Physics

Visit output: to prepare a further funding application.



CARA Fellows

Since 1933, the Council of At-Risk Academics (Cara) has been working to help academics from all over the world who suffer as a result of what they have dared to say, write, or teach, because of conflict, or just because of who they are. Since its foundation, one of Cara's the key aims has been "...the defence of learning and science".

Cara's Fellowship Programme supports academics, often in very immediate danger, helping them to escape to a safe place where they can continue their work. Many are committed to returning home to rebuild their societies when conditions allow. Whilst in the host country, they have the opportunity to develop the skills and networks that they will need when they return to their home country.

See [Cara Annual Report](http://cara1933.org/cara-annual-report-2014-15/) for further details: <http://cara1933.org/cara-annual-report-2014-15/>



As a member of the Cara Scholars at Risk UK Universities Network, the University of Warwick is one of 108 universities offering placements to academics identified by Cara who require refuge and a safe environment to continue their work. Through its Institute of Advanced Study, Warwick has been hosting Cara fellows since 2008 and the ongoing conflict in Syria and Iraq has seen continued demand for such scholarships.

The IAS would like to take this opportunity to thank donations from Warwick alumni to enable additional placements to be supported.

Reem Doukmak turned to Cara in 2013. An early career academic teaching English as a foreign language at the al-Baath University in Homs, she found herself in the middle of one of the most embattled cities in Syria. Having to circumvent road blocks and fighting in the street to reach campus, classes were routinely curtailed due to the proximity of ongoing battles. She would hear gunfire but not know where it was coming from, or where to take cover, or she would feel rockets shaking the earth.

“People wake up every day and make some sort of risk assessment for the day. You know something bad might happen, but you do it anyway, because you want to live your life in the space that’s left.”

Reem adds

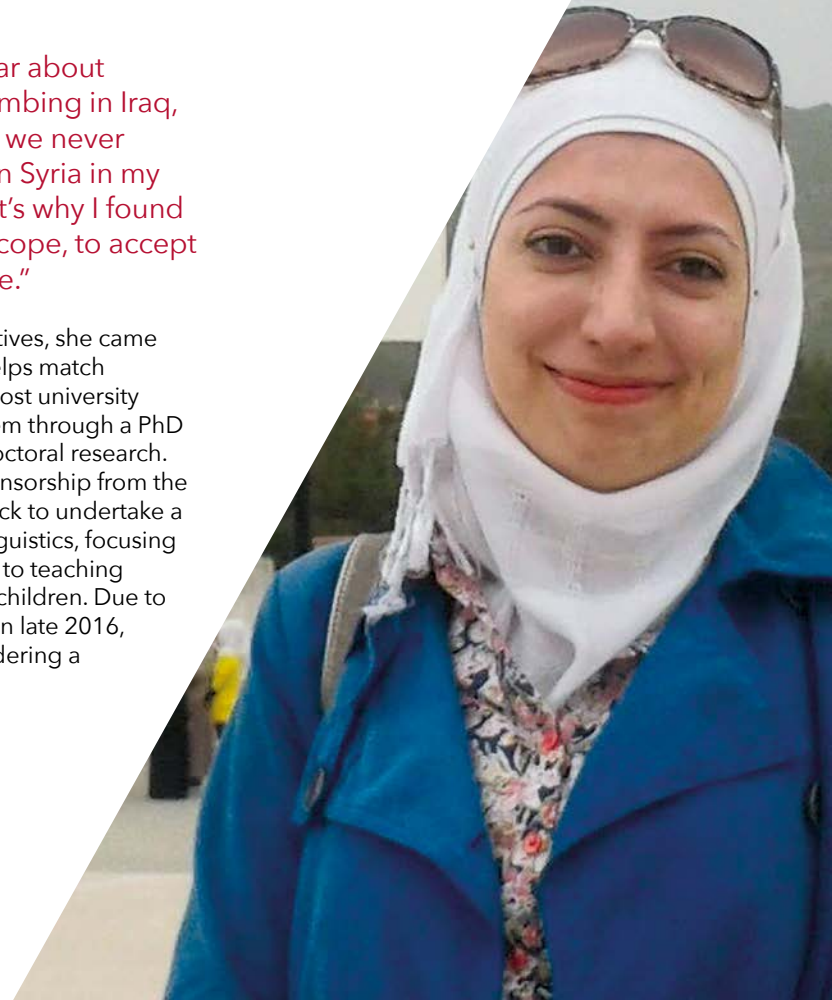
“We used to hear about fighting and bombing in Iraq, in Palestine, but we never experienced it in Syria in my generation. That’s why I found it really hard to cope, to accept this as part of life.”

Looking for alternatives, she came across Cara who helps match candidates with a host university able to sponsor them through a PhD or period of postdoctoral research. Reem received sponsorship from the University of Warwick to undertake a PhD in Applied Linguistics, focusing on drama as an aid to teaching English to refugee children. Due to complete her PhD in late 2016, Reem is now considering a career in research.

Although the conflict continues in Syria, Reem still hopes it will be possible to return one day:

“England is a really nice place to live... But nothing is better than home.”

For further information on Reem’s story, read her interview published in *The Guardian* on 23rd October 2015:
<http://www.theguardian.com/world/2015/oct/23/uk-universities-offering-lifeline-to-syrian-academics-refugees>



"Its members are involved in leading various research projects, and the expertise within the network allows a supportive and informative group to share, explore and generate ideas."

Dr Harbinder Sandhu
Associate Professor
Warwick Clinical Trials Unit



Interdisciplinary Research Activities

A key objective of the IAS is to facilitate multi- and cross-disciplinary engagement across the University, particularly through support of emergent areas of interest.

This is evidenced by the Speculative Lunches, Research Networks and Vacation School awards offered by the IAS:

- ▶ **Speculative Lunches** provide a forum for open discourse. They offer Warwick staff the opportunity to explore research ideas at an early stage of formulation with a view to developing new research collaborations.
- ▶ **Research Networks** are designed to bring colleagues together from different disciplines and/or faculties to explore themes of mutual interest and share best practice, methodologies and complementary expertise. Driven by members of the University, the networks also provide a platform to host external speakers.
- ▶ **Vacation Schools** promote the exchange of best practice and cutting-edge developments with early career researchers both at Warwick and from the wider research community. Research-orientated residential workshops offer training on specific research questions, methodologies and themes that extend beyond a single discipline. The Vacation Schools are designed to equip attendees with knowledge, skills and technical expertise to develop their collaborative and independent work.

The IAS also supports initiatives to promote engagement with audiences beyond the academic environment, either to convey the outputs of an interdisciplinary research project or by the use of material or practices that draw on multi-disciplinary input. Examples of recent Public Engagement and Schools Outreach activities are detailed in the latter part of this section.

Speculative Lunches

The Global 19th-Century

8 October 2014, hosted by
Dr Kirsty Hooper, Hispanic Studies

This event brought together colleagues with interests in the global 19th Century to learn about one another's work, and to discuss opportunities to collaborate and raise the profile of Warwick's 19th-century expertise both within and beyond the University.

The primary objective was to gauge interest in developing collaborative, cross, intra- and inter-Faculty research activities and initiatives under a 19th-century banner and to consider potential pathways for achieving this.

Addiction Across the Disciplines

10 October 2014, hosted by
Dr Susannah Wilson and Ms Hannah Grayson, French Studies

This event provided a forum for discussion in advance of a symposium on the subject of 'Historicising Addiction in Modern Europe'. This connects UK academics and non-academics (freelance writers and critics; psychotherapists, etc.) to discuss the medical, social and cultural understanding of addiction(s) from the beginnings of the modern psychological sciences in the early 19th century to the present day.

It aimed to bring together a number of colleagues in the Arts and Humanities (The Centre for the History of Medicine, Modern Languages, English and History) as well as representatives of the Medical School, Psychology and Law, with a view to establishing a new research network around Addiction Studies.

The Materiality of Mourning: the Role of Images and Objects in Grief, Mourning and Commemoration

13 October 2014, hosted by
Dr Zahra Newby, Classics and Ancient History

This meeting drew together scholars from a range of disciplines with an interest in the roles material objects can play in cultures of memory and mourning.

From Antiquity onwards we find examples of bereaved relatives or friends focusing their grief and memorialising lost loved-ones through tangible reminders of them. The meeting addressed a series of questions such as 'How does the use of material objects in grief and mourning vary across cultures and historical periods? How does this relate to research on contemporary societies and the processes of grief and mourning?'

The aim of the session was to identify fruitful lines of research that could be developed into funding bids, conferences or a series of workshops.



Systems Biology Approaches to Infection

25 January 2015, hosted by
Dr Katherine Denby, Life Sciences
and Dr Meera Unnikrishnan, WMS

This interdisciplinary topic focused on bringing together computational and mathematical approaches to the molecular study of infection.

The event was used as a forum for discussion of potential research collaborations to initiate projects such as joint supervision of PhD students and joint applications for research grant funding. It was also used to trigger the development of new interdisciplinary PhD proposals.

The Microbiology and Infection Unit has only been running since 2013 hence this meeting presented an ideal opportunity to make valuable connections with academics across other departments and, within a focused group, explore interdisciplinary research opportunities.

What is the Strategy for Drug Discovery at Warwick?

25 February 2015, hosted by
Professor Peter Scott, Chemistry, and
Dr Rebecca Kaner, IAS Early Career Fellow

This speculative lunch brought together academics from Chemistry, Life Sciences, and Warwick Medical School (WMS), alongside business development managers from Warwick Ventures, to discuss strategic routes to small molecule and biological drug discovery in key disease areas.

By gathering key academics from these disciplines together it was possible to debate how Warwick could move forward in this area, constructing a coherent strategy to develop potential new medicinal agents, following target-oriented, phenotypic or other discovery routes.

Mindfulness

5 May 2015, hosted by
Dr Manuel Villarreal, NIHR Fellow,
Professor Jeremy Dale, Warwick Medical School (WMS), Professor Richard Hastings, CEDAR (Cerebra Chair of Family Research),
Professor Sarah Stewart-Brown, WMS

The aim of this lunch was to explore research options for staff and students within mindfulness. Mindfulness has become a topic of great interest in many areas, including education, health, social care and business. Some evidence suggests that it has a positive impact on human quality of life in some of these areas, not only in our society but also at a global level.

The event brought together academics from different research fields, including health and social disciplines, with the aim of building a research network to provide a robust framework to address this topic.

'IMPRINTS Workshop for Establishing the National Centre for Ultrahigh Resolution Molecular Imaging

20 July 2015, hosted by
Dr Giovanni Costantini, Chemistry

The meeting was aimed at establishing the basis for a highly interdisciplinary collaboration across several departments at the Universities of Warwick and of Nottingham and to identify the best funding opportunities for its implementation.



Research Networks

In 2014-15, the IAS supported eight multi-disciplinary research networks involving more than 350 faculty staff members.

On average, each network includes membership from eight different departments across at least two faculties. Between them the networks hosted 28 events last year.

In addition to the case studies shown here, the IAS also supported the following networks:

- ▶ Corruption Network (Professor Mark Knights, History)
- ▶ Oral History Network (Dr Angela Davis, Centre for the History of Medicine)
- ▶ Researching New Technology for Learning (Dr Michael Hammond, Centre for Education Studies)
- ▶ Sub-Saharan African Research Network (Dr Ngianga-Bakwin Kandala, WMS)
- ▶ Travel and Mobility Studies (Dr Loredana Polezzi, School of Modern Languages and Cultures).

Psychoanalysis Across Disciplines

Dr Emma Francis, English

Psychoanalysis Across the Disciplines is designed to bring together researchers and practitioners at Warwick and elsewhere whose work draws on any aspect of psychoanalysis. The network is

eager to establish possibilities for internal and external collaborations across different disciplines and to contribute to current debates on the place of psychoanalysis in academic, cultural and clinical fields. Communication is welcome from those who would like to contribute to and draw from the network.

Health Psychology@Warwick

Dr Harbinder Sandhu, Health Sciences

Health Psychology is defined as ‘the aggregate of specific educational, scientific and professional contribution of the discipline of psychology to the promotion and maintenance of health, the promotion and treatment of illness and related dysfunction’ (Matarazzo, 1980).

It has become a recognised field within healthcare research and a growing number of projects across various departments in the University (WMS, School of Health and Social Studies and Institute of Digital Healthcare) are either Health Psychology led or have a significant Health Psychology contribution. The generic application of knowledge and skills makes it a unique subject that

can be applied to health, business, media, social sciences and so on. The aim of this network is to bring this expertise together and to provide a platform for collaborative research opportunities across the different departments and to provide a forum for support for research and teaching activity too.

Authority and Political Technologies Research Group

Dr Claire Blencowe, Sociology

This network involves colleagues and PhD students from a range of social-science disciplines who share a broad intellectual background influenced by ‘Foucaultian’, ‘Deleuzian’, ‘post-structuralist’ and ‘cultural-theory’ approaches. The focus is on contemporary critical empirical work that pushes forward these perspectives.

The group’s diverse research interests include authority, (bio) politics, politics of religion/political theology, media, power-knowledge, association, new forms of society(ism), community, the commons, participation, political imaginaries, security, borders, techne, political economy and urban questions.

"Attendees had the opportunity to learn different methodologies to evaluate the sustainable potential of diverse topics."

Dr Kerry Kirwan
Reader | Warwick Manufacturing Group



Vacation Schools

Medical and Ethical Decision Making

Professor Zvi Safra, Professor of Behavioural Science, Warwick Business School (WBS)

The four-day programme addressed a broad range of topics including various theories of medical decision-making, understanding of health statistics, stochastic dominance and clinical guidelines, using behavioural change and decision theory. In addition to the lectures, the School included group projects which resulted in a number of practical suggestions and research projects designed to improve the efficiency of the NHS and medical decision-making process.

Health Technology Assessment (HTA)

Dr Leandro Pecchia, Associate Professor, School of Engineering

This three-day Summer School was delivered in collaboration with University of Warwick's School of Engineering, Global Research Priority on Science and Technology for Health, the HTA Division of the International Federation of Medical and Biological Engineering (IFMBE), the Institute of Biomedical Technology (Patras, Greece) and the COST Action 'European network for innovative uses of EMFs in biomedical applications'.

This was the first of a cycle of IFMBE Summer Schools on HTA that is now scheduled to take place every two years.

40 attendees from 20 European countries were registered to this School.

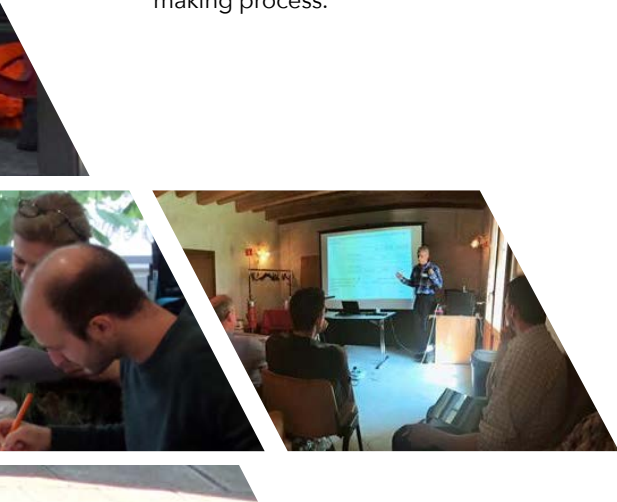


Sustainable Development of Materials, Processes and Fuels

Dr Kerry Kirwan, Reader, Warwick Manufacturing Group (WMG)

The key aim of this Summer School was to explore the concept of sustainability across different areas such as green chemistry, engineering, materials manufacturing, catalysis and fuels. The Summer School attracted 20 participants, mostly PhD students.

The School provided intense training delivered by as many as 15 academics from Warwick and other UK Universities. Also, special training on GaBi LCA software was delivered by PE International Ltd. The school was held at WMG's headquarters at Warwick University bringing together scientists from Newcastle, York, Loughborough, Birmingham, Manchester and Bath.



Public Engagement Awards

Dr Michael Scott
Classics

As part of a special festival day for schools, which took place on 26 and 27 January 2015, Warwick Classics Society produced and performed Aristophanes' *Thesmophoriazusae*, in a new translation by Classics Teaching Fellow, Clive Letchford. The performance was acted, produced and directed by undergraduate student members of the Warwick Classics Society.

The public performance was attended by over 300 people and the schools' festival performance was attended by 550 school children from various schools up and down the country, studying a wide variety of subjects including Drama, English, Classical Civilisation as well as Latin and Greek. Schools attended from Cumbria, Bolton, Newport, London, Manchester and Shrewsbury, as well as from all around the Warwick area.





Warwick Creative Exchange: All Roads Lead to Coventry

Dr Chris Bilton

Warwick Creative Exchange (WCE) is a network of University of Warwick staff bringing together Warwick academics with cultural organisations in the region.

In September 2014, WCE received funding from IAS and the Humanities Research Fund for 'All Roads Lead to Coventry', a collaboration with Warwick Arts Centre and Coventry Art Space designed to 'reimagine' the city of Coventry and the place of arts and culture within it. Artists, cultural producers and Coventry City Council officers joined academics from Warwick and Coventry Universities

on a series of walks through the city's culture, history and varied neighbourhoods, visiting museums, theatres, and historic buildings along the way, meeting cultural leaders and talking to local residents.

The walks converged on EGO performance space where walkers shared ideas, reflections and stories. Key recommendations and observations were shared with council officials. WCE is currently planning seminars and workshops linked to Coventry's bid to become UK City of Culture in 2021.

"These themes and the contacts made are continuing to be developed and built upon"

Dr Chris Bilton
Reader | Centre
for Cultural Policy
Studies

Science on Screen Outreach Project

Dr Elena Riva

During her studies, IAS Postdoctoral Research Fellow, Dr Elena Riva, developed a strong passion for science communication for promoting Science, Technology, Engineering and Mathematics (STEM) subjects to young people and has participated in various outreach activities whilst based at the Universities of Cambridge and Warwick.

In conjunction with the Institute of Advanced Teaching and Learning (IATL), Elena was recently funded to develop her concept of 'Science on Screen'. Arising from a workshop on interdisciplinary teaching methodology run by IATL, she produced a series of workshops bringing together the disciplines of Chemistry and Film & TV Studies. The 'Science on Screen' module takes popular superpower films as a starting point to explore and explain the scientific principles behind them and their relevance to everyday life.

The project was initially designed for first-year undergraduates with diverse scientific (STEM) backgrounds and allowed them the

opportunity to learn state-of-the-art scientific concepts in a different and creative way. The second day of activities was also open to first-year undergraduates from the Faculty of Arts with an interest in science fiction. Every movie led to an interactive lecture with discussions and 'hands on' activities about the scientific phenomena presented in the film. Each day was closed with a visit to a scientific lab in the University where research in a field relevant to the analysed scientific topic was undertaken.

The workshops
have since been
adapted for Schools'
Outreach events.





STAR WARS

Science on Screen Star Wars

Every spaceship involved in the famous Star Wars film was equipped with lasers or turbolasers, weapons of incredible destructive power. Moving from space to our planet, the use of ultrafast lasers to 'capture' the temporal behaviour of chemical reactions was explained.

Students were able to visit a Chemistry lab where lasers were utilised following chemical reactions providing an insight into their mechanisms.

Science on Screen Spiderman

Spiderman and Polymers involved students viewing the Spiderman movie and observing the web with which Spiderman swings, slides and jumps through the streets of New York City. This web is a long-chain polymer, similar to nylon, which is used in plastics, for example.

Students then had the opportunity to visit a lab of a Materials Science group of the University of Warwick in which they observed how polymers were experimentally made.



“The Institute is designed to springboard collaborative, interdisciplinary conversations and activities relevant to all of the University’s research faculties”

Rachel Corke
Strategy & Programme Manager
Institute of Advanced Study



IAS Cross-Faculty Projects

The IAS continues to lead a number of projects that engage with the academic community across all Faculties of the University. Currently, this includes *Exchanges: the Warwick Research Journal* and the 'Voices of the University' project.

Exchanges is an open access, online, interdisciplinary research journal. Published bi-annually, each edition includes peer reviewed articles, critical reflections and 'In Conversation' interviews with eminent researchers.

'Voices of the University: Memories of Warwick 1965-2015' is a three year oral history project that culminated in October 2015 to coincide with celebrations to commemorate the University's 50th Anniversary. During the course of the project over 260 interviews were conducted with current and former staff, students and local residents reflecting on their experience and memories of the University. The interviews have been submitted to the Modern Records Centre at Warwick as a resource for future oral history projects and extracts from a selection of the interviews have been compiled into a brochure, copies of which are available upon request from the IAS.



Background

Exchanges is the University's open-access, peer-reviewed online journal dedicated to the publication of high-quality interdisciplinary work by researchers in any field. The journal was launched in October 2013 and now publishes two issues a year, in October and April. The journal represents a collaboration between the IAS and the University of Warwick Library, bringing together the IAS's commitment to supporting cutting-edge interdisciplinary research with the library team's skills and expertise in open access journal publishing software.

Exchanges

The Warwick Research Journal

Project fellows Dr Karen Simecek, Dr Naomi Pullin and Ms Yuexi Liu

Highlights for 2014/15

- ▶ 'In Conversation' series featured Professor Bill Maurer (Anthropology), Professor Eric Foner (History), Dr Michael Scott (Classics) and Anne Fine (Children's author)
- ▶ Articles included 'Effect of String Tension Variation on the Perceived Pitch of a Classical Guitar', 'Mimicking Bone - Chemical and Physical Challenges', 'Teaching Synaesthesia as a Gateway to Creativity' and 'Interrogating Practices of Gender, Religion and Nationalism in the Representation of Muslim Women in Bollywood'
- ▶ Featured a collection of articles resulting from an interdisciplinary conference on 'Inequality in Education, Innovation in Methods'

'With the advent of electronic communication, the old restrictions imposed by a print model of publication are rapidly fading away. Young scholars rarely, if ever, refer to print journals, and yet decisions that are made in the most selective publications continue to be based on the length of a print run. This legacy will surely fade away as the multimedia advantages of online publication become obvious to scholars in all disciplines.'

Professor Randy Schekman

2013 Nobel Laureate, eLife Editor-in-Chief Foreword, Exchanges volume 1 (2)

Open Access

Now listed in the Directory of Open Access Journals, with a growing international readership, the journal is establishing itself as a unique publishing platform for interdisciplinary research that bridges the historic divide between the sciences and the humanities. The importance of such an open access, online journal is becoming increasingly evident, as scholars are starting to engage differently with published research both in how they search for articles as well as what they expect from them.

Supporting Early Careers

The Exchanges team are committed to supporting early career researchers. By publishing with Exchanges they receive detailed guidance and support through the peer review process, ensuring all authors receive feedback. In addition, early career researchers are invited to join the editorial board. This unique opportunity enables our postgraduates and postdoctoral researchers to play an active role in shaping the future of the journal and potentially influence the publishing community more broadly.

To date, the editorial board has consisted of early career researchers from a wide range of disciplinary areas. The diversity of interests and perspectives on the editorial board is important for the process of bringing research to a wider audience and helping these early career researchers to see the benefits of such an ambitious multi-disciplinary platform.

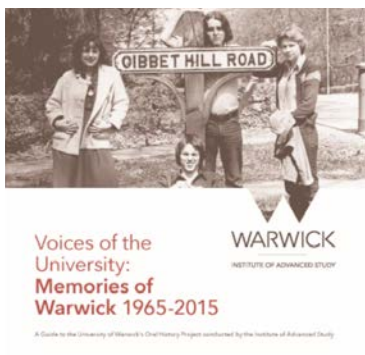
Top Downloads

1. **C. Alexander (2014)**
‘Shakespeare and War: a reflection on instances of dramatic production, appropriation, and celebration’. *Exchanges* 1(2). [716 downloads]
2. **E. Benhamou, (2014)**
‘From the Advent of Multiculturalism to the Elision of Race: The Representation of Race Relations in Disney Animated Features (1995-2009)’. *Exchanges*, 2(1). [427 downloads]
3. **S. Tillotson, (2014)**
‘Fiona, Phyllida and the ‘F’-Word: the theatrical practice(s) of women playing the male roles in Shakespeare’. *Exchanges* 1(2). [421 downloads]
4. **S.C. Cox (2014)**
‘Mimicking Bone - Chemical and Physical Challenges’. *Exchanges* 2(1). [370 downloads]
5. **J. Curtis and G. Watt (2014)**
‘Twitter, King Lear, and the Freedom of Speech, by John Curtis, and Judicial Allusion as Ornament: A Response to John Curtis’s, “Twitter, King Lear, and the Freedom of Speech” by Professor Gary Watt’. *Exchanges* 1(2). [361 downloads]

Oral History

Voices of the University Memories of Warwick 1965-2015

Project fellow: Dr Grace Huxford



The 'Voices of the University' project was initiated by the IAS in 2013 with the aim of finding out more about the history of the university from a variety of perspectives, but also to explore the place of the University within participants' lives. Furthermore, it revealed a great deal about the development of Higher Education and research in the UK, the history of student life and the social and cultural history of Britain (and beyond) after 1945.

Since the oral history project started, interviews were carried out by a

dedicated team of undergraduate, masters and doctoral students, as well as postdoctoral researchers based at the IAS. Between them the team conducted over 260 oral history interviews. In the 'Voices of the University' collection, interviews follow what is called a 'life history' approach, first discussing interviewees' early life and how they came to arrive at Warwick. Some participants had been at Warwick since it opened in 1965, whilst other interviewees had been here just a few months. Interviewees included students and academic staff as well as administrative and support staff from across the campus. Local residents also added their 'voices' to the collection.

Oral histories about the University do not always tell the same story: interviewees have different relationships and recollections of the institution, resulting in a rich and diverse archive. Much of this archive is available online for researchers to consult through Modern Records Centre's online database, hosted at the University.

The wide range of topics covered in the interviews included:

- ▶ Reflections on the land upon which the university was built
- ▶ Technological change in teaching, research and administration
- ▶ Student life, learning, fashion, cooking and political engagement
- ▶ Insider perspectives on visits from Queen Elizabeth II and President Bill Clinton
- ▶ University development and changes in Higher Education
- ▶ Interactions between the university and the local community





"I knew as soon as I got to Warwick, before I even got interviewed that this was the place I wanted to be, this was the right place for me."

From an interview with Jan Pollock, a 1968 undergraduate History student. Full interview can be listened to at:

<http://bit.ly/1PWWd1f>

The 'Voices of the University' oral history project also featured in the celebration of Warwick's 50th anniversary. A popular monthly podcast series, accompanied by a blog, highlighted aspects of the collection, ranging from student life to work done 'behind the scenes' at the university. The IAS also supported the Institute for Advanced Teaching and Learning's (IATL) 'Warwick 2065' project (led by Dr Jonathan Heron), which involved student researchers analysing the history of student drama on campus and culminated in performances for the Emerge Festival at the Warwick Arts Centre in November 2015.

The project also aims to have a more long-term impact. The 'Voices of the University' collection features in a number of undergraduate courses, with students encouraged to listen to and analyse individual oral history interviews for their assessed work.

It is hoped through initiatives like this, as well as the collection as whole, that the 'Voices of the University' will continue to be heard into the future.



Supporting Early Career Researchers

Each year the IAS awards at least 20 Early Career Fellowships to support the transition of Warwick PhD students looking to establish postdoctoral research careers.

Fellows are given the opportunity to build up their independent research portfolio whilst participating in a weekly development and mentoring programme. Training sessions provide exposure to the diverse components of a research career and the skills required to help secure an appointment in academia or other sectors.

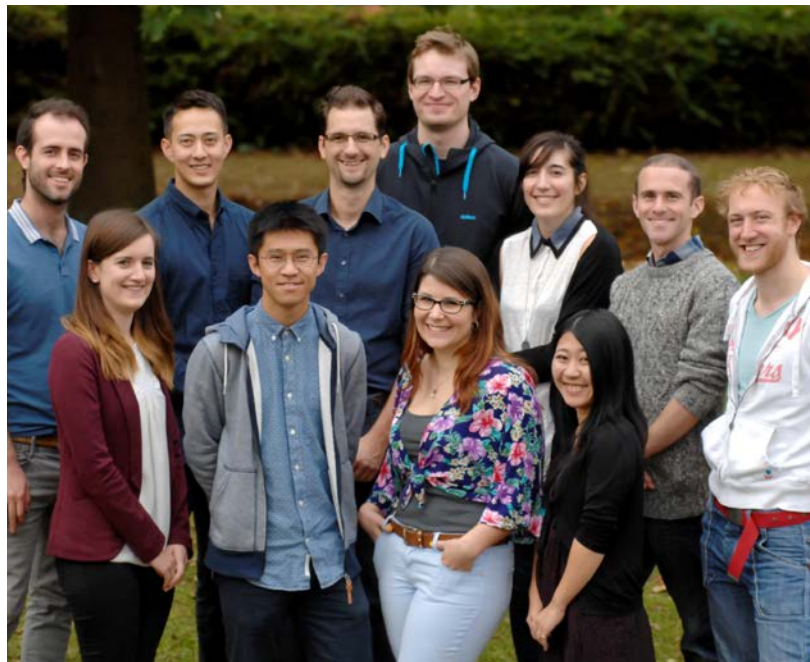
Since 2007, at least 70% of those participating in the programme have obtained research appointments by the time they complete their IAS Fellowship. In 2014-15, the success rate was as high as 90%. Recent appointments have included a lectureship at Bristol, postdoctoral positions at the universities of California Davis, Leiden, Birmingham, Kings College London, Sheffield and Warwick as well as being recruited to research teams with commercial organisations.

The Academic Careers and Employability Programme (ACE)

The IAS's Early Career Fellows participate in the Academic Careers and Employability Programme (ACE) while transitioning from the completion of their PhD to a postdoctoral/academic research career.

This 10-month programme constitutes a series of seminars designed to provide guidance and resources concerning all aspects of academia, such as public engagement and outreach opportunities, media training and podcast production, public speaking, advanced teaching practices and writing funding proposals. While participating in this interdisciplinary curriculum, fellows begin to scope an independent research agenda, increase their research outputs, convene workshops to build networks and explore new collaborations.

They also take part in presentations and practice interviews, providing them with invaluable preparation for academic applications. Annual cohorts of at least 20 fellows, representing many different academic departments provide a uniquely interdisciplinary environment for the researchers and challenges them to engage with unfamiliar disciplines and practices during the weekly meetings.

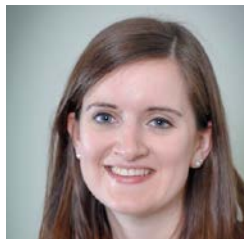


ECF Cohort One - October 2014



Dr Ed Greenough
Chemistry

During his fellowship, Ed studied ultrafast transient absorption spectroscopy for photoprotection and photoactivation in biologically relevant molecules. Ed has since taken up a postdoctoral position at the University of Sheffield.



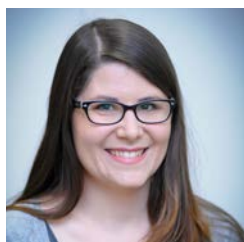
Dr Grace Huxford

Dr Grace Huxford History

Grace's research interests include investigating the early Cold War period in Britain. She completed her PhD thesis on the significance of the Korean War (1950-53) within British social and cultural history, entitled *Thinking Soldiers: the Construction of Subjectivity in the Era of the Korean War*. Grace is interested in all topics relating to the Cold War, military subjectivity, prisoners of war, life writing and oral history.

Grace was co-organiser of the Warwick Oral History Network and the Prisoner of War Studies Network whilst at Warwick. Historians of the Cold War, post-war Britain and military history are increasingly reasserting the importance of the Korean War (1950-53), often described as a 'forgotten' war, in the early Cold War period.

As a research fellow in oral history, Grace also co-ordinated the University's oral history project 'Voices of the University: Memories of Warwick, 1965-2015', to mark Warwick's 50th Anniversary. Grace began a permanent Lectureship at the University of Bristol in September 2015.



Dr Rebecca Kaner

Dr Rebecca Kaner Chemistry

Rebecca completed her PhD *Amphipathic Alpha-Helix Mimetics through Asymmetric Self-Assembly on a metal Scaffold* in the Department of Chemistry in October 2014. She used her Early Career Fellowship to develop the collaborations she had set up and publish several research articles from her doctoral thesis.

Alongside her academic research Rebecca also began a Teaching Fellowship, coordinating the Chemistry for All Royal Society of Chemistry funded schools outreach programme. This five-year programme engages with KS3 pupils at several local schools, promoting Chemistry as an interesting and important subject. Rebecca is also the IAS's Research Officer, coordinating its ACE Programme.

"ACE was a great programme and offered me the opportunity to improve my communication skills and my knowledge of the academic environment"

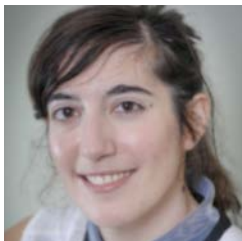
Dr Elena Riva
Postdoctoral
Research Fellow
Institute of
Advanced Study

Dr Georg Loefflmann Politics and International Studies (PAIS)

Previously, Georg studied International Relations in Germany at the FU Berlin, the Humboldt University, and the University of Potsdam, with a focus on German and European foreign and security policy and constructivist research perspectives.

Georg's thesis on the impact of Germany's strategic culture on the Bundeswehr's Afghanistan mission was published under the title *Verteidigung am Hindukusch?*

Georg's current research focuses on the geopolitical contextualization and representation of national identity and how it affects the formulation of grand strategy and foreign and security policy. Here, Georg follows a critical approach in investigating the intertextuality and political significance of discourses in producing the social reality of geopolitics and national security. Georg currently holds a Teaching Fellowship in PAIS.



Dr Elisa Lopez Lucia



Dr Misato Matsuoka

Dr Elisa Lopez Lucia
Politics and International
Studies

Elisa joined the PAIS Department in 2010, working on a doctoral thesis concerned with the processes of regionalisation of foreign and security policies in West Africa and South America. Her PhD was funded by an EU Erasmus Mundus Joint PhD Programme (GEM PhD school) and was carried out both at the University of Warwick and at the University LUISS Guido Carli, in Rome.

Elisa's doctoral thesis looked at the discourses and practices of actors 'inside' and 'outside' the region and at their encounter to frame the process of regionalisation.

Elisa began a Research Fellowship at the University of Birmingham in April 2015.


Dr Misato Matsuoka
Politics and International
Studies

Misato has been an early career fellow at the IAS at the University of Warwick since October 2014. In September 2014, she submitted her PhD thesis entitled *Moving Beyond (Traditional) Alliance Theory?: a Neo-Gramscian Approach to the U.S.-Japan Alliance* supervised by Professor Christopher W. Hughes and Dr Dominic Kelly. Her thesis examined the US hegemony in the Asia-Pacific region by exploring the roles of the U.S.-Japan alliance through the neo-Gramscian lenses.

Prior to her doctoral studies at Warwick, Misato completed an MA in Global Studies and a BA at the Faculty of Liberal Arts at Sophia University (Japan). In addition to her PhD thesis, she is currently involved in the project entitled 'Informal Political Actors in East Asia, Russia and the Arab World' by examining the roles of academics in Japan in the context of the U.S.-Japan alliance and other research activities.

"As well as the obvious scientific benefits, I have very much enjoyed developing a greater understanding of what doctoral and postdoctoral researchers outside the Physical Sciences do."

Dr Daniel Pearse
Early Career Fellow
Institute of Advanced Study





Dr Daniel Phillips

Dr Daniel Phillips

Chemistry

Between 2007 and 2011 Daniel studied for an MChem in Chemistry at the University of Warwick and completed his PhD in 2014. As part of his first degree he completed a 12-month industrial placement in the "Analytical Sciences" department of MSD UK.

In October 2014, Dan was awarded an Early Career Fellowship to pursue research in the field of "responsive polymers for drug delivery and diagnostics", a key theme of his PhD thesis which he successfully defended in early 2015.

Daniel has a strong background in Scientific Communication and outreach activities, helping make science more accessible to young scientists of all ages and backgrounds.

Daniel has since taken up a permanent position as a Research Technologist with Infinium, UK in May 2015.



Dr Lei Shi

Dr Lei Shi

Computer Science

Lei's work contributed to the Participation in Healthcare Environment Engineering Project (PHEE), funded by Engineering and Physical Sciences Research Council (EPSRC). It brings together healthcare with participatory design and built environment design. The multi-disciplinary team is delivering high-impact research to improve the user experience of healthcare environments, through end user participation in design, engineering and decision making.

Lei followed his fellowship with a postdoctoral appointment as a Research Fellow in the Experiential Engineering Group, International Digital Laboratory at the University of Warwick.

Dr Dan Pearce

Molecular Organisation & Assembly in Cells (MOAC) Physics

After completing his Masters in Maths and Physics in 2007, Dan took some time out in which he did some travelling and worked as a climbing coach. He returned to Warwick in 2009 to start the MOAC postgraduate course. Dan's PhD research probes the underlying mechanisms by which swarming animals are able to achieve the incredible feats of organisation such as bird flocks, fish shoals and insect swarms.

Dan devised a new model for how birds are able to form massive bird flocks without a huge breakdown in order. Dan has also travelled around the UK to collect data on large starling flocks in the wild, in order to verify the predictions made by his model.

Dan began a postdoctoral position at Leiden University in March 2015.



Dr Dan Pearce



Dr Maurice Stierl

Dr Maurice Stierl
Politics and International Studies

Before commencing his doctoral studies, Maurice obtained a BA in European Studies at the University of Maastricht/ Netherlands and an MA in International Relations at the University of Warwick.

His research focuses on the diverse forms of dissent that challenge European Union border and migration governance and policies in manifold ways. He conducted a multi-sited ethnography in different European countries, including Germany, Italy and Greece. Besides migrant and solidarity activist struggles, Maurice is interested in aesthetic

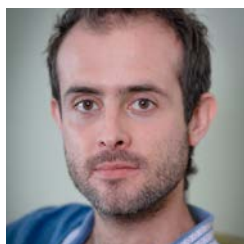
and artistic articulations that contribute to strategies of subversion. This can be more broadly situated in Critical Security, Migration and Border Studies, (post-structural) International Relations, European Studies, Political Geography, and International Political Sociology.

Maurice is currently a Visiting Assistant Professor at the University of California, Davis, USA.

Dr Rhys Williams
English Literature

Rhys' PhD Thesis entitled Radical Political Imagination in Fantastic Literature.

Rhys began a Lectureship at King's College London in March 2015.



Dr Rhys Williams

“The key benefits, aside from the all-important financial support, have been to grow accustomed to the interview scenario, and the chance to present research to a non-specialist audience, which is a new, important and difficult to learn skill.”

Dr Rhys Williams
Early Career Fellow
Institute of Advanced Study

“The Early Career Fellowship has enhanced my ability to foster new research in innovative and unconventional ways. Other than preparing new research proposals and applying for funding, I have also started developing a viable strategy for future research”

Dr Nazia Hussein
Early Career Fellow
Institute of Advanced Study

ECF Cohort Two - May 2015

A further nine fellows joined the remaining fellows from the October cohort



Dr Nazia Hussein

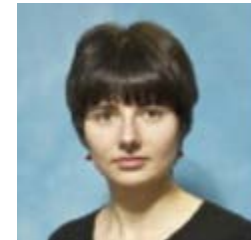
Dr Nazia Hussein Sociology

Nazia completed her PhD at the Centre for the Study of Women and Gender, in the Department of Sociology at the University of Warwick. She also worked as a sessional tutor teaching in the following modules: International Perspectives on Gender, Media Sociology and 'Race', Difference and the Inclusive Society, in addition to providing support as an academic writing mentor and a resident tutor.

Nazia's research aims to expand the understanding of respectable femininity

in South Asia, and more specifically in Muslim communities. She seeks to establish an unexplored understanding of how middle class, urban, highly educated, professional women of Bangladesh, identified as the 'New Women', play a major role in redefining the meaning of women's contribution in the nation's entry into the global world.

Nazia started a Teaching Fellowship position in the Sociology department at London School of Economics in October 2015.



Dr Daria Luchinskaya Warwick Institute for Employment Research (IER)

Daria started her PhD at the Warwick Institute for Employment Research (IER) in 2011, investigating graduate knowledge and skill utilisation in UK small and medium-sized enterprises (SMEs) using a mixed-methods approach.

Daria completed her BA in Economics and Management (2007) and CEELBAS-funded MPhil in Russian and East European Studies (2010) at the University of Oxford, St. Anne's College. She pursued her interest in public economics and developed her research interests in higher education and the graduate labour market in her MPhil thesis, on recent reforms in higher education in Russia.

Daria is currently an Early Career Fellow at the IAS.



Dr Giacomo Mannironi

Dr Giacomo Mannironi
School of Modern Languages & Cultures

Giacomo graduated from the University of Bologna and has a PhD (Dottorato) in Literary Genres -Comparative Literature from the University of L'Aquila (Italy), and a PhD in Italian Studies from the University of Warwick. His thesis is entitled *Libri disonesti: Education and Disobedience in the 18th Century Venetian Novel (1753-1769)*.

Giacomo's research centres on the rise of the Venetian novel and its public, using a multidisciplinary approach that includes the history of the book and reading, textual analysis, social and cultural history. Giacomo is currently working on a digital bibliography of 18th century Venetian novels.



Dr Alex Rautu

Dr Alex Rautu
Physics

Alex graduated from the University of Warwick in 2011 with First Class Honours in Physics (MPhys). He was awarded a Chancellor's Scholarship in October 2011 to study for a PhD in Physics at the University of Warwick, working under the supervision of Professor Matthew Turner.

During his PhD, Alex worked on theoretical problems in soft matter and Biology, with a particular interest in the physics of lipid membranes. He also taught a Maths support class for 1st year Mathematics for Physicists.

Alex started a one year postdoctoral appointment in December 2015 with Madan Rao, a well-known physicist affiliated with the National Centre for Biological Sciences and Raman Research Institute, Bangalore, India.

Dr Sarah-Jane Richards
Molecular Organisation & Assembly in Cells (MOAC) Chemistry

Sarah-Jane has an MChem degree in Chemistry from The University of Sheffield. Her fourth year project was entitled Smart Polymers for Improved Oil and Gas Production. She used fluorescenceanisotropy techniques to investigate the dynamics of thermoresponsive polymers fortheir use in clathrate hydrate inhibition. The focus of her PhD research was on the design, synthesis and application of multivalentmacromolecular vectors that can interact with microbial membranes.

Sarah-Jane joined MOAC in 2010 to carry out an MSc in Mathematical Biology and Biophysical Chemistry. She is currently a Fellow at the IAS.



Dr Sarah Jane Richards





Dr Joanna Rzepa

Dr Joanna Rzepa English

Before coming to Warwick, Joanna completed her double MA in English and Translation Studies, and Polish and Comparative Literature at Jagiellonian University in Kraków, Poland.

Joanna recently finished her PhD in English and Comparative Literary Studies and is currently working on her first monograph, *Literary and Theological Modernisms*, which seeks to re-establish the place of Theology within the field of modernist studies.

Joanna's PhD thesis explores the complex relationship between cultural and aesthetic modernism and modernist Theology, focusing on the poetry of Rainer Maria Rilke, T. S. Eliot, and Józef Wittlin an Early Career Fellowship. She currently holds an Early Career Fellowship at the IAS.



Dr John Sidda

Dr John Sidda ChemistryStudies

John conducted his PhD studies between the Department of Chemistry and School of Life Sciences. His research focussed on regulatory mechanisms involved in bacterial natural product biosynthesis, leading to the discovery of new *Streptomyces venezuelae* natural products (Chem. Sci. 2014, 5, 86-89). His tenure as an IAS early career fellow allowed him to develop the methods used for natural product discovery in other *Streptomyces* species.

John has since take up a Research Associate position in November 2015 at King's College London.



Dr Sander Werkhoven

Dr Sander Werkhoven Philosophy

Sander was a doctoral student at the University of Warwick, supervised by Professor K. Ansell-Pearson and Dr M. Broome. His PhD thesis was examined by Professor Miguel de Beistegui and Professor Simon Glendinning, and passed without corrections in February 2015. Areas of specialisation include Philosophy of Medicine & Psychiatry, Meta-ethics and Value Theory, 19th and 20th century European Philosophy.

Sander's PhD thesis concerns the nature of mental and physical health. He develops and defends an original version of the capacity approach to health and examines ways in which health, thus conceived, could serve as an ethical ideal. In his thesis Sander also defends a modest version of meta-ethical realism according to which (non-moral) health-promoting goods are objective goods.

Sander began a four year lectureship at Universiteit Utrecht in the Netherlands, in October 2015.



Dr Laura Wood
English

Laura undertook her PhD in the Department of English and Comparative Literary Studies. Her thesis explored representations of the reader in 19th century literature and was supervised by Dr Emma Francis. She joined the University of Warwick in October 2011, having completed both her BA and MA in English Literature at the University of Kent. Her MA dissertation, titled *Indelible Impressions on Our Ingenuous Souls: A Study of Reading and of Walter Pater as Reader*, inspired her current research which incorporates her interests in Victorian literature, literary theory and close reading.

Laura's thesis focused on the figure of the reader as portrayed in 19th-century literature and the wider social, cultural and political implications of these representations and their place in time. She is fascinated by the act of reading - how and why we read, the physical and emotional experience of reading and why reading has the potential to be such an inflammatory act.

Laura's research addresses these broader questions, locating them within the complex, and often unforgiving, social structure of the Victorian period.

Alongside her PhD she has also been pursuing a career in children's literature. Her first children's book *'Poppy Pym and the Pharaoh's curse'* was published in September 2015.

Winner of the Montegrappa Scholastic Prize for New Children's Writing named as Dr Laura Wood

Dr Laura Wood was named the winner of the Montegrappa Scholastic Prize for New Children's Writing and her debut novel, *Poppy Pym and the Pharaoh's Curse*, has now been published by the company behind The Hunger Games books.

The competition, run in association with The Independent, literary agency Luigi Bonomi Associates and the 'London Book Fair', attracted more than 1,000 entries.

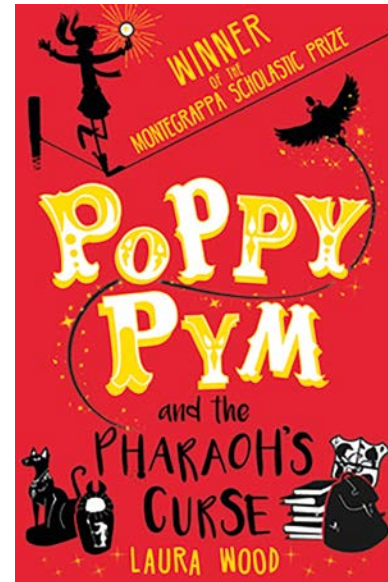
Laura, a PhD candidate at the University of Warwick, who wrote her thesis on Victorian literature, impressed the judges, who praised her story's "endearing heroine, rollicking plot and zany humour".

Laura said the idea for *Poppy Pym* had been "buzzing around in my brain for a couple of years, but I had always been too afraid to sit down and write it. I thought the

competition would be a good way to break out of my fear and that having a deadline to write the first 5,000 words would be an excellent way of getting the ball rolling - and it was."

The writer won a publishing deal with Scholastic and agent representation by LBA Books. *Poppy Pym* was launched by Scholastic at The London Book Fair 2015, as part of the Fair's 'London Book and Screen Week' programme of events. Laura also won a trip to Italy to visit the Montegrappa factory, and was presented with a limited edition Montegrappa pen at a Mayfair event.

The head judge, children's author, Cbeebies presenter and Booktrust patron, Carrie Burnell, said: "The story of *Poppy Pym* dances off the page with a quiet grace and heartwarming sense of wonder. Each chapter is sprinkled with just the right mixture of charm and suspense, to keep you hooked and make you smile, whilst an enthralling cast of characters bring the story to life in vivid and quirky detail."



'It has been the most wonderful surprise and I am completely over the moon. I worked as a children's bookseller all through university and found that the fizzing feeling of joy that comes from reading a brilliant children's book never really goes away.'

Laura Wood
Early Career Fellow
Institute of Advanced
Study



"It made me realise what I had learned through experience and got me to put it into words"

Dr Charlotte Heath Kelly
Postdoctoral Research Fellow
Institute of Advanced Study



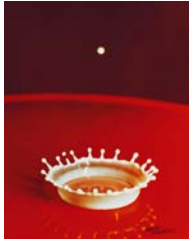


Picture My Research

The IAS supports a number of postdoctoral researchers on two and five-year fellowships.

The fellows were recently challenged to encapsulate their research in a single image that went on to be featured at the IAS Symposium held at The Shard, London, in May 2015.

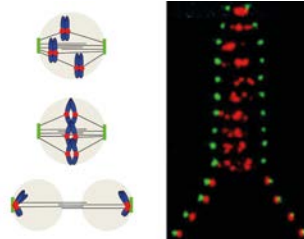
The display is now on show at the IAS.



Dr James Sprittles
Department of Mathematics

Milk Drop Coronet

Taken in 1936 by the pioneer of high-speed photography Harold Edgerton, this photo highlights the extraordinarily complex behaviour which ensues after the seemingly ordinary everyday event of a small milk drop falls into a thin layer of milk (dyed red). Such splashes are the subject of intensive research across numerous disciplines motivated by both (a) a curiosity to understand the underlying fundamental physics and (b) the requirements of numerous emerging microfluidic technologies such as 3D printers.



Dr John Meadows
Warwick Medical School

How Do Cells Maintain the Correct Number of Chromosomes?

Dividing cells maintain their full genetic complement by first replicating their DNA precisely, packaging it into chromosomes and then dividing these equally between each new cell. Humans undergo a staggering number of cell divisions every second with astonishing fidelity, however, the majority of tumours contain cells with abnormal numbers of chromosomes. Understanding the mechanism and regulation of chromosome segregation is therefore crucial to generating therapeutic insight and novel drug targets.

Left panel - Cartoon of the mechanical apparatus used to segregate chromosomes (blue), with kinetochores (red), poles (green) and microtubules (black).

Right panel - Series of time-lapse images of a model organism accurately segregating its chromosomes: kinetochores (red) and poles (green).



Dr Xiaowei Zhao
Department of Engineering

Aerodynamic Control of Large Offshore Wind Turbines

Increasing the size of wind turbine is one of the most effective ways to reduce the wind-power cost. In the picture is the Vestas 7MW offshore wind turbine, the largest commercially available wind turbine in the world. Its blade has a length of 80 meters which is more than nine London buses linked together. The sector aims to increase the wind turbine's capacity to 20 MW, requiring a blade length over 120 meters.

However, large offshore machines are encountering flutter and buffeting vibrations which limit their further potential increase. Smart rotor concepts will be used to solve these challenges.



Dr Charlotte Heath-Kelly
Department of Politics and
International Studies

The Survivor Tree: Memorializing Terror Through Resilience and Vitality?

The way societies memorialize violent events is changing. Societal shifts towards postmodern design and global interconnection have brought the era of the engraved granite monolith to a close. Charlotte's research focuses on the contemporary representation of horror and meaninglessness within memorials to terrorist attacks since 9/11. The abstract forms of 'Reflecting Absence' and Norway's 'Memory Wound' use absence to communicate unrepresentable loss. Charlotte studies this design shift and its situation within the 'War on Terror' paradigm. Most recently, she has focused on the emergence of living objects - such as the 'Survivor Tree' - which soften this representation through the juxtaposition of 'resilient' bombsite relics.



Dr Jason L. Mast
Centre for Interdisciplinary
Methodologies

Difference, Distance and Disgust: Deciphering a Strong Sensation

Disgust-sites are characterized as having the power to command attention and caution, as being durable over time and as universal in that every human culture has some form of disgust trigger and response. Disgust-sites also work in a pre-cognitive way, triggering revulsion before people know precisely what they are reacting to. In this project, Jason uses food-based case studies to examine two social processes: a) how disgust-sites may be destabilized, or how disgusting things, like bugs, may be un-disgustified, and b) how disgust-sites, like tainted meat, may be deployed, or used to pollute and contaminate other, formerly neutral sites.



Dr Madeleine Fagan
Department of Politics and
International Studies

Apocalypse Ahead

Narratives of disaster, catastrophe and apocalypse are widespread in cultural, popular scientific and governmental statements about climate change. There are a number of ethical assumptions reproduced by such apocalyptic scenarios - about how we relate to nature, the importance of a future and the limits of human nature - which limit the imagination of political possibilities with which to respond to climate change. In short, the way we think about ethics in future scenarios changes our reality in the here and now. Madeleine's research seeks to destabilise these apocalyptic assumptions in order to open up possibilities for more innovative political approaches to climate futures.



Dr Tara Puri
Department of English and
Comparative Literary Studies

The New Woman and The Indian Ladies' Magazine

The first decade of the 20th century saw the coming of age of the Indian 'New Woman', a figure who was created in the pages of women's magazines and directly influenced by the British 'New Woman'. Launched in 1901 under the editorship of Kamala Saththianadhan, The Indian Ladies' Magazine, explicitly posited itself as a gendered space that offered its readers and writers possibilities of new expressions as well as new subject positions. The 'New Woman' who materialised in the very frontispiece of the magazine was educated and modern, but also able to negotiate traditional and domestic roles with relative ease. Above all, she was marked by a cosmopolitan sensibility that allowed her to occupy an enlarged public space through print.



Dr Paul Chleboun
Department of Mathematics

Large scale dynamics of random systems

Paul's research is in applied probability, in particular in the area of mathematical statistical mechanics. He uses mathematical techniques to understand, on a rigorous level, the large scale behaviour of systems which consist of many, relatively very tiny, interacting components. Such systems include very classical examples, like the observable behaviour of gasses consisting of many interacting particles, all the way through to social systems such as the behaviour of traffic on our roads. What these systems have in common is that the macroscopic behaviour is the result of many microscopic interactions which we either cannot hope to describe precisely or it is not useful or relevant to do so. In these cases it very often turns out that the large scale behaviour is independent of the precise details of the microscopic interactions, so we model them by certain random processes.



Dr Charlotte Mathieson
Department of English and
Comparative Literary Studies

Mobility in Victorian Britain

Mobility in Victorian Britain explores how journeys in literature of this period serve to create the place of the nation and understand its relationship to a global landscape that was being restructured by new modes of mobility. Looking at journeys by rail, stagecoach, and on foot, undertaken by travellers and tourists, governesses and dairymaids, sailors and factory girls, and many more figures in between, this project reveals a rich and varied canvas of mobile practices. It argues that these are central to understanding the idea of the nation, and its connections to the rest of the world, in the Victorian era.



Dr Zakia Shiraz
Centre for Interdisciplinary
Methodologies

Child Soldiers in Colombia

Colombia is an enigmatic country. It is arguably Latin America's oldest and most stable democracy. In recent years, Colombia has emerged as the region's economic powerhouse. However, despite these positive indicators, the country has been in a state of war for almost seven decades. 18,000 children were forced to join Colombia's armed groups between 2008 and 2012 alone. The country is home to one of the largest numbers of child soldiers in the world.

The demobilisation of combatants has resulted in some success in recent years - over 3,000 Colombian children have turned in their guns. But, is society ready to take them?



Dr Julie Walsh
Department of Sociology

Test-cases in Shameful Sociability

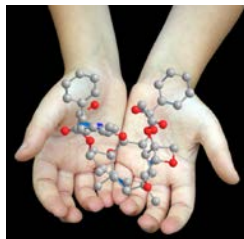
The image is Masaccio's 'The Expulsion from the Garden of Eden' a powerful evocation of the dynamics of shame. If we read this image together we can approach an understanding of how shame works: how it functions in society, what it feels like psychologically, how it might be used politically, and, most speculatively, whether it's possible to think of shame in ways that move us beyond the painful, humiliating, isolating set of feelings that this image so forcefully conveys.



Dr Jacomien Prins
Centre for the Study of the
Renaissance

A Well-Tempered Life: Music, Health and Happiness in Renaissance Learning

Music has deep connections to our emotional life, but the nature of these connections is difficult to describe and interpretations of it changed during the course of history. If we have a look at Jeroen Bosch's 'Garden of Earthly Delights' (1480-90), for example, we see that 'passion' is symbolized in a moralising way by overstretched people bound to gigantic musical instruments. People who couldn't resist the 'music of the flesh' ended up in hell. This project investigates variations on these themes of the self as a taut string and the purpose of life as becoming a well-tempered human being.

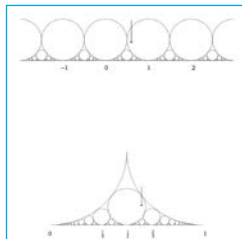


Dr Graham Pattison
Department of Chemistry

The Sustainable Synthesis of Chiral Molecules

Graham's research involves the discovery and development of new methodology to make molecules faster, cleaner and more efficiently. In particular he focuses on chiral molecules, which like the hands depicted, exist as one of two mirror-image forms, or enantiomers.

This is of great importance as both mirror-image forms are likely to have very different biological activities, for example if they are to be used as a drug. The molecule shown is the anti-cancer drug taxol, a chiral molecular architecture of great complexity. Graham aims to provide the tools to make simplified analogues of molecules like this which may display similar bioactivity, but can be synthesised much more readily.



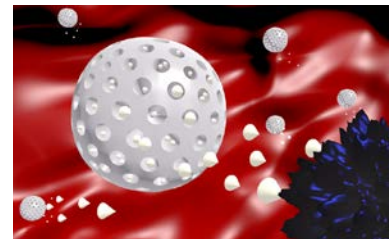
Dr Vaibhav Gadre
Department of Mathematics

Numbers, Geometry and Dynamics'

Numbers: Rational numbers are numbers expressed as fractions p/q , where p and q are integers with no common factor and q is non-zero. This excludes irrationals such as $\sqrt{2}$, π , etc. Together they form the real numbers. An irrational can be approximated with increasing precision by rationals. The continued fraction gives an 'efficient' approximation.

Geometry: The horizontal line represents the reals. Each circle sits atop a rational. A vertical line landing on an irrational skewers infinitely many circles. Each skewered circle gives a rational in the continued fraction. Vaibhav's research focusses on the continued fraction of a 'random' irrational.

Dynamics: The picture is also realised in a non-Euclidean geometry called hyperbolic geometry. The circle packing symmetries give a quotient surface equipped with hyperbolic geometry. The vertical skewers project to geodesics on the quotient surface. The continued fraction of a 'random' irrational can be understood from the dynamics of a 'random' geodesic.

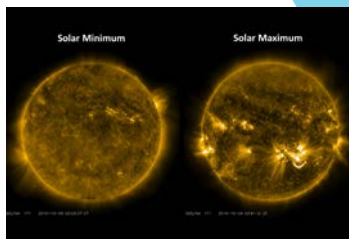


Dr Gemma-Louise Davies
Department of Chemistry

Nano-Medics: Single-shot Diagnostic Tools and Drug Delivery Agents

Current medical treatment regimes have a disconnect between diagnosis and treatment; this leads to disease progression, reduced patient compliance and higher costs. Gemma-Louise's project aims to combine magnetic resonance imaging (MRI) with simultaneous delivery of therapy: the emerging field of 'Theranostics'.

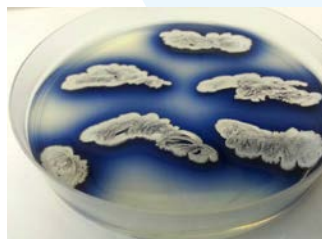
Nano-sized materials have come to the forefront of research in recent years and have vast potential in a wide range of applications, due to unique properties conferred by their minute sizes. This project involves the development of nanoparticles which are capable of diagnosing specific diseases with high selectivity, even at early stages when diagnosis is notoriously challenging, concurrently delivering a dose of therapeutic directly at the site of disease.



Dr Anne-Marie Broomhall
Department of Physics

The Mysteries of the Sun's Magnetic Field

Despite being able to disrupt everyday life on Earth, the Sun's magnetic field is poorly understood. Violent explosions associated with the Sun's magnetic field can, for example, cause wide spread power cuts and disrupt communications and GPS satellites. NASA estimates that a severe space weather event could cost upwards of \$2 trillion. Anne-Marie's research aims to improve our understanding of the Sun's magnetic field by profiling the solar interior, where the magnetic field is generated and maintained, using a technique called helioseismology. She also draws synergies between the magnetic fields observed on other stars, where explosions far more devastating than those observed on our Sun occur frequently.



Tuning of Bacteria: Chemical Probes for the Functionalisation of Polyketide Compounds

Natural products represent a major source of powerful therapeutics for the treatment of human, animal and plant diseases. Many of these products are polyketides that are synthesised in microorganisms by the enzymes polyketide synthases (PKSs).

The aim of Elena's research is to generate novel 'unnatural' polyketide products, molecules that are still made by bacterial enzymes but different from the original products and may be as medicinally and commercial valuable (for example, development of new antibiotic, antifungal, anticancer drugs). In order to achieve this challenging target, small-molecules of organic synthesis, microbiology, microorganism genetic manipulation and new chemistry technologies are combined.

Leverhulme and ESRC Awards 2015

Fellows from the IAS have gone on to secure Leverhulme Early Career Fellowship awards for the third year in a row.

Joining former IAS Postdoctoral Fellows Dr Katrin Wehling-Giorgi and Dr Christabelle Peters, who received their awards in 2013 and 2014 respectively, are Dr Simone Varriale and Dr Charlotte Heath-Kelly.

Simone Varriale developed his Leverhulme application as an IAS Early Career Fellow in 2014; he now holds his award in the Department of Sociology.

Shortly before the completion of her IAS fellowship in July 2015, Charlotte secured a Leverhulme Trust Fellowship. However, this was quickly followed by the announcement that she had also received an ESRC Future Research Leaders award. Charlotte currently holds her ESRC award in the Department of Politics and International Studies at Warwick.



“The Symposium at the Shard gave us a wonderful opportunity to engage with collaborators and showcase the work of our fellows”

Giorgio Riello
Director | Institute of
Advanced Study



IAS Symposium 2015

On Friday 15 May 2015, the IAS launched its first annual symposium at The Shard, Warwick Business School London campus.

Themed around 'The Future of Interdisciplinary Research', the event provided an opportunity to view the innovative interdisciplinary research being undertaken at Warwick and to learn more about how interdisciplinary research is fast changing academic research and careers.

The symposium commenced with a panel discussion on 'The Future of Interdisciplinary Research', chaired by Professor Stuart Croft, Provost, University of Warwick. Invited speakers included Professor Rick Rylance—Chief Executive, Arts and Humanities Research Council; Mr Peter Churchill—Joint Research Centre, European Commission, Belgium; Professor Sarah Churchwell—Professor of America Literature and Public Understanding of the Humanities, University of East Anglia; and Professor Jane Elliot—Chief Executive, Economic and Social Research Council.

During the course of the afternoon there was an opportunity to hear how the IAS facilitates the transition from PhD to postdoctoral researcher and current IAS fellows showcased their interdisciplinary projects in an exhibition displayed at The Shard. Projects funded by the IAS, including the Exchanges journal, 'Voices of the University' oral history project, and innovative public engagement projects, also featured in interactive exhibitions throughout the day. The afternoon concluded with a keynote lecture delivered by Professor Martin Hairer - Regius Professor, Department of Mathematics, and winner of the Fields Medal 2014.

The Future of Interdisciplinary Research - Panelists



Mr Peter Churchill
Senior Advisor for Scientific Policy, Joint Research Centre (JRC)–European Commission, Belgium

Mr Churchill is, by training, an environmental scientist who has worked in academia, industry and public service. For the past 25 years he has worked for the European Commission's Directorate General Joint Research Centre, first as a scientist then becoming a Head of a series of earth observation and environmental based units from 1996. He currently works as the Adviser for Scientific Policy at the JRC's headquarters. His interests include the research and innovation policy, the future of manufacturing industry, and standardisation.



Professor Sarah Churchwell
Professor of American Literature and Public Understanding of the Humanities, University of East Anglia

Professor Churchwell's research and teaching expertise are in 20th-21st century and contemporary American literature and culture. Her journalism has appeared in The Guardian, The Sunday Times, The New York Times Book Review, The TLS, The Independent, The Financial Times, The Observer, The Times, The Telegraph, The Spectator and The Liberal. She has been a judge for many literary prizes, including the 'Women's Prize for Fiction' (formerly the Orange Prize), and is a member of the Folio Prize Academy and a Fellow of the Royal Society of the Arts, as well as a judge of the 2014 Man Booker Prize.



Professor Jane Elliott
Chief Executive of the Economic and Social Research Council

Professor Elliott took up the post of ESRC Chief Executive and Research Council's UK International Champion in October 2014. Before joining the ESRC, Professor Elliott was Professor of Sociology and Head of the Department of Quantitative Social Sciences, at the Institute of Education, University of London, as well as Director of the ESRC-funded Centre for Longitudinal Studies (CLS). Since 2012, Jane has also been the founding Director of the Cohorts and Longitudinal Studies Enhancement Resources (CLOSER) programme.



Professor Rick Ryland
Chief Executive of the Arts and Humanities Research Council

Before taking up the post of AHRC Chief Executive, Professor Ryland was Head of the School of Arts, Languages and Literatures at the University of Exeter. Prior to moving to Exeter in 2003, he was Dean of Arts and Letters at the then Anglia Polytechnic University in Cambridge. Rick took up the post of AHRC Chief Executive in 2009 and was elected a Fellow of the Royal Society of Arts (FRSA) in 1998 and a Founding Fellow of the English Association in 1999. Rick is also currently Chair of Research Councils UK Executive Committee.

Building Interdisciplinary Careers



Dr Rebecca Williams
Lecturer in Medical History,
University of Exeter

Dr Williams' research interests are in the history of medicine in modern South Asia, particularly the politics of health and development in post-independence India. She completed her PhD in the Department of History, University of Warwick, in 2013, and was an Early Career Fellow at the IAS from 2013-14 prior to being appointed by the University of Exeter.



Dr Katrin Wehling-Giorgi
Lecturer in the School of
Modern Languages and
Cultures, Durham University

Dr Wehling-Giorgi researches comparative approaches to 20th-century Italian narrative. She studied Philosophy and Modern Languages at the University of Oxford, where she completed a D.Phil in Comparative Literature. In 2011, Katrin joined Warwick as an IAS Postdoctoral Research Fellow prior to securing a Leverhulme Early Career Fellowship award leading on to an academic appointment at Durham University.



Dr Christabelle Peters
Leverhulme Early Career
Fellow, University of
Warwick

Dr Peters works on the interplay between race and nation in the Spanish and Portuguese-speaking World, with a focus on Africa as a discursive strategy in the construction of anticolonial and postcolonial identities. She completed her PhD at the University of Nottingham and was an IAS Postdoctoral Research Fellow from 2013-14 prior to receiving a Leverhulme Early Career Fellowship award.

▶ Keynote



Professor Martin Hairer
Regius Professor,
Mathematics Institute,
University of Warwick and
winner of the Fields Medal
2014

Professor Hairer is one of the world's foremost leaders in the field of stochastic partial differential equations and in stochastic analysis and stochastic dynamics. Hairer attended the College Claparede in Geneva, followed by the University of Geneva, where he obtained his PhD under the supervision of Jean-Pierre Eckmann in 2001. He is currently Regius Professor of Mathematics at the University of Warwick, having previously held a position at the Courant Institute of New York University. He was awarded the Fields Medal in 2014.



“Interdisciplinarity in practice comes with its own set of challenges and the Institute does a wonderful job of engaging academics from a wide range of disciplinary backgrounds”

Dr Zakia Shiraz
Postdoctoral Research Fellow
Institute of Advanced Study



IAS Facilities

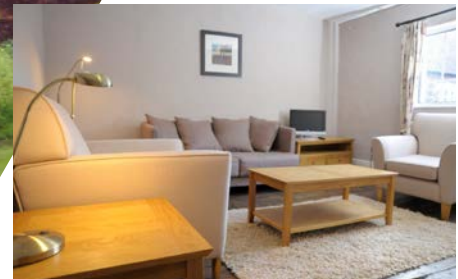
Millburn House

The IAS is based in Millburn House and offers funded projects access to resources which include a seminar room with capacity for up to 35 people, offices for visiting researchers and hot-desking facilities. The IAS has also a hospitality area suitable for receptions or informal conversations with our visitors and fellows.



Cryfield Grange

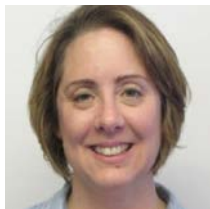
Cryfield Grange is the residential facility of the IAS. It is a listed building with Tudor foundations, extensive gardens and a tennis court which offers self-catering accommodation for visiting researchers and their spouses. Conveniently located adjacent to campus, Cryfield Grange offers wi-fi enabled en-suite double bedrooms along with a communal kitchen, laundry facility, dining room and a shared living room.



Staff



Professor
Giorgio Riello
Director



Miss Rachel Corke
Research Strategy and
Programme Manager



Mrs Rachel Hitchcox
Programme
Coordinator

Support Team



Dr Rebecca Kaner
ACE Programme
Coordinator



Mrs Sarah Matthews
Programme Assistant



Mrs Tina Hoare
Programme Assistant




Ms Yuexi Liu
Senior Exchanges Editor


A network diagram background consisting of a complex web of interconnected nodes and lines. The nodes are represented by small circles in various colors (purple, blue, teal, grey) and are connected by thin lines. The overall color palette is soft and pastel, transitioning from light purple on the left to light yellow on the right.

Contacts

Institute of Advanced Study

University of Warwick
Millburn House
Millburn Hill Road
University of Warwick Science Park
Coventry
CV4 8UW

 **Tel:** 024 7615 0565

 **Fax:** 024 7615 0566

 **Email:** IAS@warwick.ac.uk

 **Website:** go.warwick.ac.uk/ias

 **Twitter:** @iaswarwick