



WARWICK

INSTITUTE OF ADVANCED STUDY

Global Futures

Building Interdisciplinary

Postdoctoral Research Careers

19 - 20 May 2016

Scarman House, University of Warwick

go.warwick.ac.uk/globalfutures

Symposium Schedule

19 May 2016

09:30	Registration & Coffee	
10:00	Session 1 Funding for Postdoctoral Fellowships	
12:00	Comfort Break	
12:10	Session 2 Building a Research Career	Funder Drop-in Session
13:00	Lunch	
14:00	Session 3 Becoming a Competitive Applicant	
15:00	Coffee	Early Career Fellowships Clinic
15:30	Session 4 Flash Talk Competition	
17:00	Close	

20 May 2016

08:45	Coffee & Pastries	
09:15	Session 5 Developing your Track Record	
10:30	Coffee	Early Career Fellowships Clinic
11:00	Session 6 Engagement with the Public	
13:00	Lunch	
14:00	Session 7 Grant Writing & Fellowship Applications	
16:00	Close	

Information

- All main sessions are held in Meeting Room 9
- A breakout space is available in Meeting Room 7, which includes:
 - A display of IAS activities and funding schemes
 - Funder drop-in session 12:10 – 13:00 19 May
 - Early Career Fellowships clinics 15:00 – 15:30 19 May & 10:30 – 11:00 20 May
- Computing facilities are available in the Internet Café
- WiFi is accessible using the access code obtained from reception

Session 1 | Funding for Postdoctoral Fellowships

19 May, 10:00 – 12:00, Meeting Room 9

Chaired by Professor Giorgio Riello, Director of the Institute of Advanced Study

Speakers from major funding bodies will discuss their Fellowship opportunities. They will also discuss the purpose of these Fellowships and what qualities they are looking for in a candidate. There will be an informal drop in session after this panel has convened.

The **British Academy** (www.britac.ac.uk) is the UK's national body for the humanities and social sciences. It offers opportunities for outstanding ECRs to strengthen their experience and secure permanent posts by the end of their Fellowship.



EPSRC

The **EPSRC** (www.epsrc.ac.uk) is the UK government funding agency for engineering and the physical sciences. EPSRC Fellowships provide support to world-leading individuals.

Through **Marie Curie Fellowships** the European Commission supports the best, most promising individual researchers, while seeking to break the barriers between academic and other sectors (ec.europa.eu/research/mariecurieactions).



The **Royal Society** (www.royalsociety.org) is the independent scientific academy of the UK and the Commonwealth. It supports outstanding scientists building independent research careers and looking to secure permanent posts in universities.

The **Wellcome Trust** (www.wellcome.ac.uk) is an independent foundation dedicated to improving human health. Fellows gain the opportunity to develop independent research careers.

wellcometrust

Session 2 | Building A Research Career

19 May, 12:10 – 13:00, Meeting Room 9

Chaired by Professor Daniel Branch

Two IAS International Visiting Fellows will speak about their experiences building a prestigious international research career, including the challenges and the benefits they have faced. IAS Global Research Fellow Dr James Sprittles will give testimony on how he is building his thriving career in research.

Professor Pamela Gilbert, from the University of Florida, specialises in Victorian literature, cultural studies and the history of medicine. She is visiting the UK to collaborate with researchers from several academic disciplines, supported by Dr Ross Forman of the Department of English & Comparative Literary Studies.



Professor Sandra Vasconcelos is visiting the UK from the University of Sao Paulo, Brazil. She researches the presence and circulation of eighteenth- and nineteenth-century British novels in nineteenth-century Brazil. Her visit is supported by Dr Ross Forman of the Department of English & Comparative Literary Studies.

Dr James Sprittles, Assistant Professor in the Mathematics Institute, researches mathematical modelling and computational simulation. Dr Sprittles has recently been awarded a Leverhulme Trust Research Project Grant and is a named investigator on an EPSRC Programme Grant (www.micronanoflows.ac.uk).



Session 3 | Becoming a Competitive Applicant

19 May, 14:00 – 15:00, Meeting Room 9

Chaired by Rachel Corke

Three speakers will discuss some practical ways in which early career researchers can improve their applications to increase the chance of becoming successful Fellowship holders..

Rachel Corke recently took up the post of Pre-Award Analyst at the Petroleum Institute, Abu Dhabi. Prior to this she was the Research Strategy and Programme Manager at the IAS and through her career in research facilitation has gained extensive experience in preparing funding proposals.



Dr Julie Walsh is an expert in psychoanalysis, gender & sexuality studies and social & cultural theory. She is based in the Department of Sociology, funded by an IAS Global Research Fellowship. Dr Walsh convenes the *Psychoanalysis Across the Disciplines* Research Network.

Dr Gemma-Louise Davies is a Senior Research Fellow in the Department of Chemistry, supported by an IAS Global Research Fellowship. There, she works on the synthesis and testing of new nanomaterials for healthcare. Dr Davies will discuss successful ways to find smaller amounts of funding.



Session 4 | Flash Talks Competition

19 May, 15:30 – 17:00, Meeting Room 9

Chaired by Professor David Anderson

Nine Early Career Researchers will present a single image encapsulating the key argument of their research and will accompany this with a five minute flash talk.

A panel of judges consisting of Professor Ann Stewart, Dr Rosemary Collier, Professor James Mason, Professor Giorgio Riello and Professor Ian Guymer will convene and award three prizes.

David Anderson is a Professor of African History at Warwick. He specialises in histories of rebellion and collaboration, British Africa Policy and resilience in East African landscapes.



Flash Talk Competitors

- | | |
|---|--|
| 1 | Ana Raquel Nunes, Warwick Medical School
<i>Resilience: Opportunities and Barriers of Living in Extremes</i> |
| 2 | Emine Erdogan, Department of Sociology
<i>What Happened to You, Tomato?</i> |
| 3 | Andrij Vasylenko, Department of Physics
<i>Single-Walled Carbon Nanotubes with Encapsulated 1D crystals</i> |
| 4 | Jocelyn Anstey Watkins, Warwick Medical School
<i>Patient + Health Worker + Mobile Phone = Enhanced Healthcare in South Africa?</i> |
| 5 | Marco Cinelli, Warwick Manufacturing Group
<i>It is Just a Matter of Finding the Right Ingredients</i> |
| 6 | Emanuelle Santos, Department of English & Comparative Literary Studies
<i>Ruins of a Recent Past</i> |
| 7 | Zehra Irshad, Warwick Medical School
<i>Making Fat to Burn Carbs</i> |
| 8 | Violeta Kovacheva, Institute of Advanced Study
<i>Modelling to Aid Cancer Diagnosis</i> |
| 9 | Tom Wilks, Department of Chemistry
<i>An Artificial Ribosome: Autonomous DNA-Templated Synthesis</i> |

Details of the competitors and their research are on pages 7 & 8

Flash Talk Competitors

Human exposure to extreme events is becoming more frequent and severe. Individuals, communities and governments are being faced with the need to become more resilient in order to reduce their vulnerability and improve their ability to adapt now and in the future. The links between resilience, vulnerability and adaptation are found to be essential in developing resilience-building strategies.

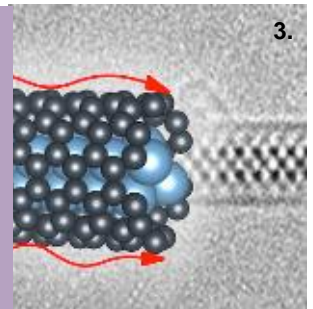


2.



I found this 'sad' tomato while I was sorting the green and/or overripe tomatoes out from the production line of a tomato-processing factory in Turkey. This research has followed tomatoes and women's labour simultaneously from lands to homes and this photo was one of the best shots to show us the 'upsetting story' of their interaction in a new 'good for everyone' global food regime.

The development of electronics technology demonstrates the persistent trend of miniaturization. The essential part of any architecture, interconnectors, represent the bottleneck for nanoelectronics. In the theoretical study of transport in novel materials we investigate how encapsulated crystals provide the buffer for pacification of hot optical phonons and to restore initially excellent conductivity of carbon nanotubes.



4.



Mobile phones can be a powerful solution to deliver healthcare in rural South Africa, by improving patient outcomes and strengthening the unsteady public health system. Doctors are self-innovating by creating technological solutions such as an eye test app to overcome healthcare access barriers. Innovation out of necessity is driven by current poor diagnostic and referral services.

Flash Talk Competitors

Investigating the sustainability assessment of products is a matter of integration. I see myself as a chef, who combines multiple disciplines and integrates them in a sound, robust and successful manner. This leads to models capable of evaluating products sustainability in the form of a simple score or performance class.



6.

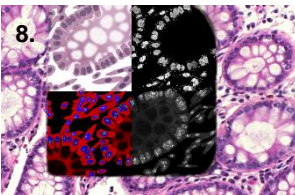


Literature was an important site of resistance through which African countries fought Portuguese colonialism. Yet, after their independences, the legacy of colonialism was supplemented by a number of societal changes. This research assesses how these literatures have shaped the countries' contemporary postcolonial experience.

One of the enzymes that make fat is DGAT-2. We found that, DGAT-2 is specialised for the formation of fat which rapidly generates heat. This makes DGAT-2 a potential pharmaceutical target to control body weight, and to stabilise glucose levels in diabetes.

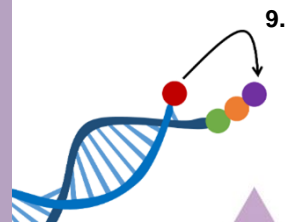


8.



When pathologists examine a tumour, they consider a number of criteria in order to diagnose the patient. Recent developments have enabled whole slides to be digitally scanned. Many scientists are working on developing methods for automatically analyzing the tissue in order to provide quantitative information to the pathologists.

The ribosome is responsible for translating the information stored in DNA into proteins. It would be extremely useful to be able to achieve the same level of synthetic precision. Our research uses DNA as a template on which reactive groups are brought together in a programmed order to create sequence-defined macromolecules.



Session 5 | Developing an excellent Track Record

20 May, 09:15 – 10:30, Meeting Room 9

Chaired by Professor Richard Aldrich

Speakers will discuss the subject of building a track record of academic excellence, including balancing teaching, administration and research. They will also discuss the common pitfalls, such as cluttering Curriculum Vitae with unnecessary pollution. This is illustrated further by discussing the associated costs and benefits building an exemplary publication record.

Richard Aldrich is a Professor of International Security in PAIS. His main research interests lie in the area of intelligence and security communities. He also maintains related interests in the future of cyber security, liberty and privacy, set against a background of accelerating globalisation.



Professor Chris Warhurst is Director of the Institute for Employment Research. His main focuses are labour market and labour process developments, trends and issues. He is motivated by wanting to see better scientific and policy-maker understanding of work and employment.

Session 6 | Engagement with the Public

20 May, 11:00 – 13:00, Meeting Room 9

Chaired by Dr Nicholas Monk

There is a wide variety of ways to engage with non-academic audiences through your research. During this session speakers will cover some of these, from building your idea into a business, to engaging with patient healthcare, to working with school children.

Warwick Ventures (www.warwick.ac.uk/ventures) helps academics to commercialise the innovations produced from their world-leading research. They will discuss how you could go about doing this and what you have to keep in mind.



Dr Katherine Astbury, Associate Professor in the School of Modern Languages and Cultures, will discuss how she engages local school children with her research into French Theatre and the Napoleonic Era.

Dr Mike Chappell is a Reader in the Department of Engineering where he researches the modelling and analysis of biomedical, pharmacokinetic and biological processes. This has led to a large scale public engagement project in patient healthcare.



Dr Christopher Kay is a Postdoctoral Fellow in the Department of Chemistry and Entrepreneurial Lead on an *Innovation to Commercialisation of University Research (ICURE)* grant, where he is commercialising work from his research.

Dr Magdalena Skrybant leads the Collaboration for Leadership in Applied Health Research and Care (CLAHRC) at Warwick, aiming to build lasting collaborations across health and social care organisations, universities and local authorities.



Session 7 | Grant and Fellowship Applications

20 May, 14:00 – 16:00, Meeting Room 9

Chaired by **Dr Rebecca Kaner**

There are several key differences between a Fellowship application and other types of funding proposals which will be discussed during this final session. Two Fellowship holders will talk about their experiences of preparing applications, with tips on what works well and what to avoid.

In April 2016 **Dr John Burden** took up the position of Research Strategy and Programme Manager at the IAS. Until recently he was a Research Support Manager in R&IS. Through his career he has aided the preparation of many Fellowship applications and understands their particular nuances.



Dr Simone Varriale is a Sociologist with a background in Art History and Media Studies, currently holding a Leverhulme Early Career Fellowship. His research explores the relationships between globalisation, inequality and cultural identity.

Dr Peter Gammon is an Associate Professor and Royal Academy of Engineering Research Fellow in the Department of Engineering. His research focuses on developing new electronic devices that can work in the 'harsh' environment, where reliability and efficiency must be maintained despite operating in extreme surroundings.





Feedback

If you have any comments you would like to leave us about your experience of *Global Futures: Building Interdisciplinary Postdoctoral Research Careers*, please visit:

go.warwick.ac.uk/globalfutures/feedback

Contact us

Institute of Advanced Study
University of Warwick
Millburn House
Millburn Hill Road
University of Warwick Science Park
Coventry CV4 7HS

Tel: 024 761 50565
Email: IAS@warwick.ac.uk
Website: www.warwick.ac.uk/ias
Twitter: [@iaswarwick](https://twitter.com/iaswarwick)