

CHANGE & SOCIAL IMPACT

Hosted by  UNIVERSITY OF
LEICESTER

MGS ESRC DTP Annual Conference 27th June 2024



Midlands Graduate School
Doctoral Training Partnership



Economic
and Social
Research Council

Table of Contents

Welcome page	3	Poster Presentations	8
Overview of the day	3	Interactive activities	8
Distinguished Speakers	4	Guide to Interactive Activities	9
Keynote Speaker	5	Afternoon session	10,11
Morning session	6,7	Room Layout	12

Useful Contacts

College Court Leicester +44 (0) 116 223 1680

Knighton Rd, LE23UF blog.fats.talent (what3words)

Organising Team esrcmgsconf2024@leicester.ac.uk

Scan this QR code to download a Travel Plan
(bottom of the webpage)



The Organising Team and College Court Staff are available
throughout the venue should you need anything.



University of
Nottingham



Nottingham Trent
University



WARWICK
THE UNIVERSITY OF WARWICK



Loughborough
University

Hello All,

We are excited to welcome you to the Annual Midlands Graduate School ESRC Doctoral Training Partnership 2024 Conference, which is kindly hosted by the University of Leicester this year! We have worked hard to deliver a thought-provoking day with presentations on wide-ranging topics, multiple expert speakers with a wealth of insights, perspectives and innovative interactive activities to engage in.

We extend our gratitude to all postgraduate students and early career researchers for sharing their research, and to everyone who has taken the time to attend. This conference would not have been possible without the help and guidance from Ashleigh Skelhorn, Louise Taylor and Dr Sally Horrocks. Learn, network, connect, and enjoy the day!

Organising Team

Angelica Hosea
Matthew Brennan
Vaida Gegieckaite

Overview of the Day

9.00-10.00

Registration and Coffee

10.00-11.15

Opening of the Conference and Keynote Speaker Address

11.15-12.30

Morning Presentations and Lightning Talks

12.30-13.30

Lunch

13.30-14.30

Interactive Activities and Poster Presentations

14.30-15.45

Afternoon Presentations and Lightning Talks

15.45-16.45

Additional Speaker talks

16.45-17.00

Closing Address

3



UNIVERSITY OF
BIRMINGHAM



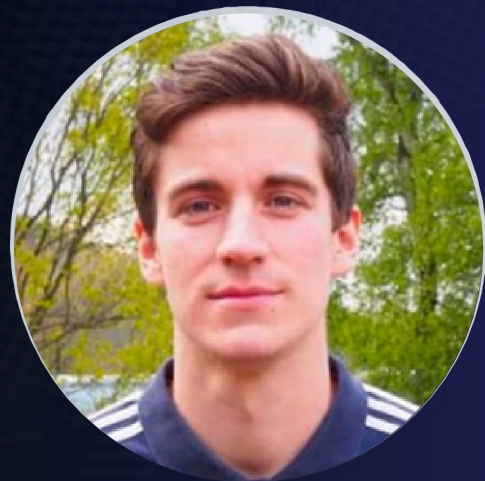
UNIVERSITY OF
LEICESTER

Distinguished Speakers

We are fortunate to have four expert speakers at this year's MGS ESRC DTP Conference. All of the mainstage addresses will be delivered in the **OAK suite**.

The opening address will be delivered by **Prof Richard Thomas**

Professor of Archaeology at University of Leicester
Deputy Pro-Vice Chancellor for Research and Enterprise
Dean of the Doctoral College
Scan QR code for more details

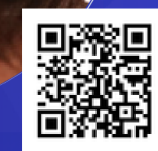


Dr. Chris Thompson will talk about his own mental health journey throughout his PhD, addressing various stressors encouraging audience questions and comments to foster active discussion on PhD student wellbeing. Please also see his interactive session.

DTP Placements Manager with Midlands Graduate School

Dr. Jennifer Creese will deliver the final talk:
'Thriving in your PhD: Self-Care, Support and Success.'

Lecturer in Health Services Research at University of Leicester
Postgraduate Research Tutor at Population Health Sciences
Department
Scan QR code for more details



Keynote Address

We are delighted to welcome **Dr. Zainab Mai-Bornu** who will deliver a talk titled: 'Change and Social Impact: The Role of the Researcher'

Lecturer in International Politics
Research Fellow at the Centre for Trust, Peace, and Social Relations (CTPSR)
TVET STEP-B science-training projects Lead
Scan QR code for more details



In her keynote address, Dr. Mai-Bornu will discuss the need for researchers to rethink how and for what purpose research is done and will highlight the importance of doing research that has impact and social change as opposed to research for publications or academic purposes.

Dr. Mai-Bornu joined the School of History, Politics, and International Relations as a Lecturer in International Politics in April 2021. She brings a wealth of experience from her previous roles as a Research Fellow at the Centre for Trust, Peace, and Social Relations (CTPSR) at Coventry University and as an ESRC Postdoctoral Fellow at the Department of Social and Policy Sciences at the University of Bath, where she also completed her PhD in Politics, Languages, and International Studies in 2017. Beyond her academic accomplishments, Dr. Mai-Bornu has made significant contributions to Nigeria's educational and international development sectors. She led TVET STEP-B science-training projects supported by the World Bank at the National Board for Technical Education and served the Katsina State Government. Her affiliations with the Intelligence Security and Strategic Studies (ISSS) research cluster and the Institute for Environmental Futures at the University of Leicester position her as a distinguished expert in her field.

5



UNIVERSITY OF
BIRMINGHAM



UNIVERSITY OF
LEICESTER

Morning Session **BIRCH**

11.15-12.30

- Chandini Subramanyam -

Improving Mental Health Literacy: Exploring and understanding how young adults carers of seriously ill relatives from ethnically diverse backgrounds recognise and seek support for their own mental and emotional well-being

Notes:

-
-
-
-
-
-
-
-
-
-

- Inderjit Bains-

Can a public-private education policy transform the lives of disadvantaged children? Initial findings from a qualitative study on India's Right to Education Act

Notes:

-
-
-
-
-
-
-
-
-
-

- Mengying Niu -

Sport and sociocultural impact: The Beijing 2022 Winter Olympic Games on China

Notes:

-
-
-
-
-
-
-
-
-
-

- Ioana Cerasella Chis -

Horizons to Collectively Move Towards: Gig Economy Subjects of Disablement's Envisioning of a Transformed Society

Notes:

-
-
-
-
-
-
-
-
-
-

Morning Session CHESTNUT

11.15-12.30

- Xiyuan Gao -

Female Star Wars Fandom and the Social Merit of “Substitution Creation”

Notes:

-
-
-
-
-
-
-
-
-
-

- Yamin Chowdhary -

Contradictory Coherence: Pride Parades as Sites for Researching Social Change

Notes:

-
-
-
-
-
-
-
-
-
-

- Dave Coppock -

Filling Spaces with Noise: Challenging Male Violence on Reclaim the Night Marches

Notes:

-
-
-
-
-
-
-
-
-
-

- Merissa Hickman -

Maternal and Paternal Futures (PrePP project - PREconception care Policy and Perspectives)

Notes:

-
-
-
-
-
-
-
-
-
-



Poster Presentations

We are delighted to welcome three poster presentations. They will be delivered in the upstairs foyer from 13.30–14.30 alongside interactive sessions.

– Antti-Eero Lattula –

Numbers or Pictures? Comparing the Description–Experience Gap Across Numerical and Pictograph Representations
Regional Green Employment in the UK: Identifying Lagging and Excelling Regions in the Transition to Net Zero

– Linjin Man –

The Use of Power in Analysing Teaching Assistants' Support and its Impact on independence/curriculum balance: Retrospective Reflections of Young Adults with Vision Impairment in the UK about Their School Experiences

– Angelina Mattheou –

Regional Green Employment in the UK: Identifying Lagging and Excelling Regions in the Transition to Net Zero

Dr. Andrea Perez and colleagues from No7 Beauty Company Q&A session about transitions between academia and industry.

Dr. Chris Thompson offering drop-in sessions for information and advice relating to placements and career development.

Vicky Panossian's interactive workshop will offer a chance to explore your PhD project using play-based research methods.

Bertha Taylor is leading a group discussion on organizational politics and strategies to mitigate their negative impact.

Interactive Sessions Outline



Guide to Interactive Activities

Drop in to one of three Q&A sessions with Dr. Andrea Perez and colleagues from No7 Beauty Company to find out more about the transition from academia to private sector and the transferable skills gained through PhD journey. **Sessions start at 13.30, 13.50, 14.10**



Douglas Fir



Meet Dr. Chris Thompson and get informed about placement options during PhD, gaining experience and developing skills for an academic career.

Sessions start from 13.30 every 10 minutes, last session 14.20



Walnut

Vicky's workshop will be a chance to approaching your PhD project using play based research methods. Borrowing from practices of art and play therapy, her methods pose questions about social inequalities through clay-based exercises and personalised prompts to fit your project.



Willow



Bertha will deliver a multilevel exploration of the impact of organisational politics on performance, team, and individuals focusing on EDI (Diversity, Equity, and Inclusion) initiatives, transformational leadership, and psychological capital to mitigate the negative impact.



Maple



Afternoon Session **BIRCH**

14.30-15.45

- Ayesha Zahid -

Advancing Green HRM: A Comprehensive Review of Theory and Practice

Notes:

-
-
-
-
-
-
-
-
-
-

- Yi-Ru Guo -

Bridging Divides: The Role of Kinmen Museum in Cross-Strait Reconciliation Between Taiwan and Mainland China

Notes:

-
-
-
-
-
-
-
-
-
-

- Mohammed Abdullahi -

Brain Drain or Gain: The Socioeconomic Impact of Nigerian Doctor Migration on Healthcare Systems in Nigeria

Notes:

-
-
-
-
-
-
-
-
-
-

- Pamela Wilson-LIGHTNING TALK

Boundary making and ontological security

Notes:

-
-
-
-
-
-
-
-
-
-



Afternoon Session CHESTNUT

14.30-15.45

- Zhuolin Li -

Archival Authenticity and the Hidden
Physicality of Archivist

Notes:

-
-
-
-
-
-
-
-
-
-

- Elizabeth Darrington-Mosley -

Menus and Masks: Waiters experiences of working in a
'Covid friendly' restaurant

Notes:

-
-
-
-
-
-
-
-
-
-

- Chantelle Taylor -

"Who is 'shh'ing me: Using an autoethnographic
account of miscarriage to explore silence in
(m)otherhood and academia"

Notes:

-
-
-
-
-
-
-
-
-
-

- Bertha Adwoa Twiba Taylor -LIGHTNING TALK

The Impact of Organisational Politics on
Performance; A Multilevel Study Investigating the
Roles of EDI (Equality, Diversity and Inclusion),
Transformational Leadership and Psychological
Capital

Notes:

-
-
-
-
-
-
-
-
-
-

7



University of
Nottingham



Nottingham Trent
University

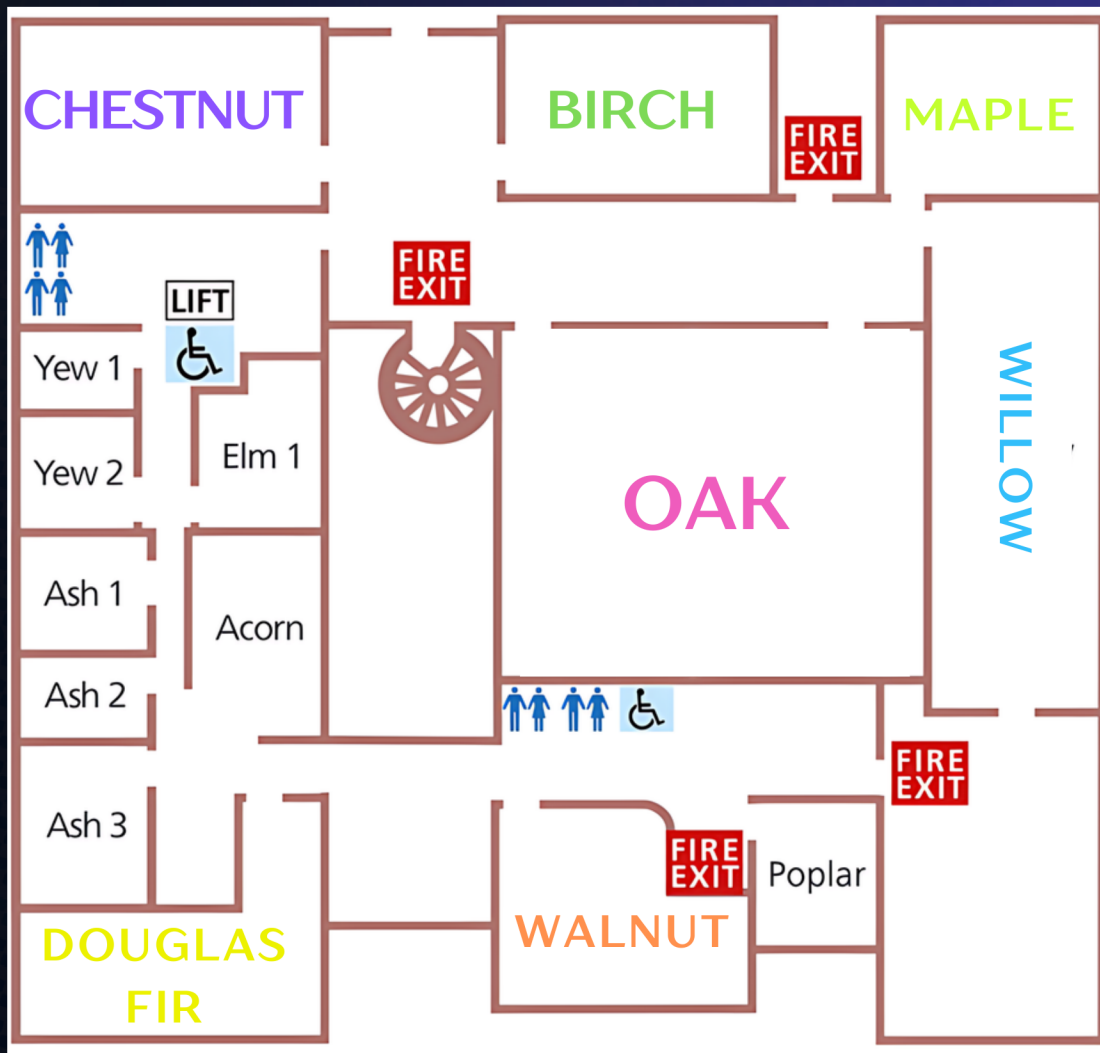


WARWICK
THE UNIVERSITY OF WARWICK



Loughborough
University

New Contacts



Midlands Graduate School
Doctoral Training Partnership



Economic
and Social
Research Council