

# National Instruments Labview 2021 Student Version Install Instructions for Windows.

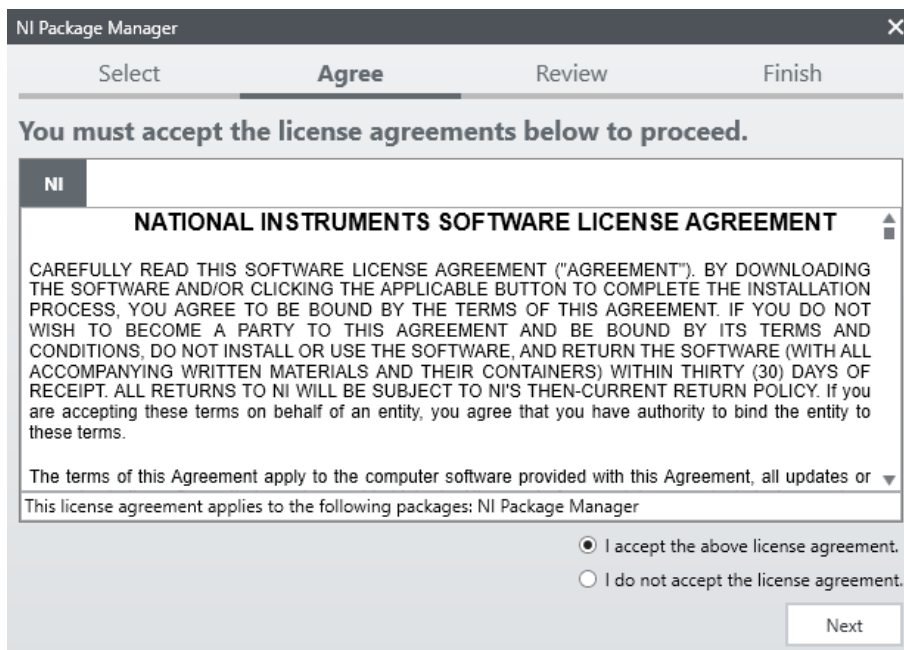
Download Labview 2021 for Windows. (If the additional drivers or the MAC & Linux versions are required, choose the appropriate download).

What you see on screen may differ from the screenshots provided.

Right click on the file and select *Mount*.

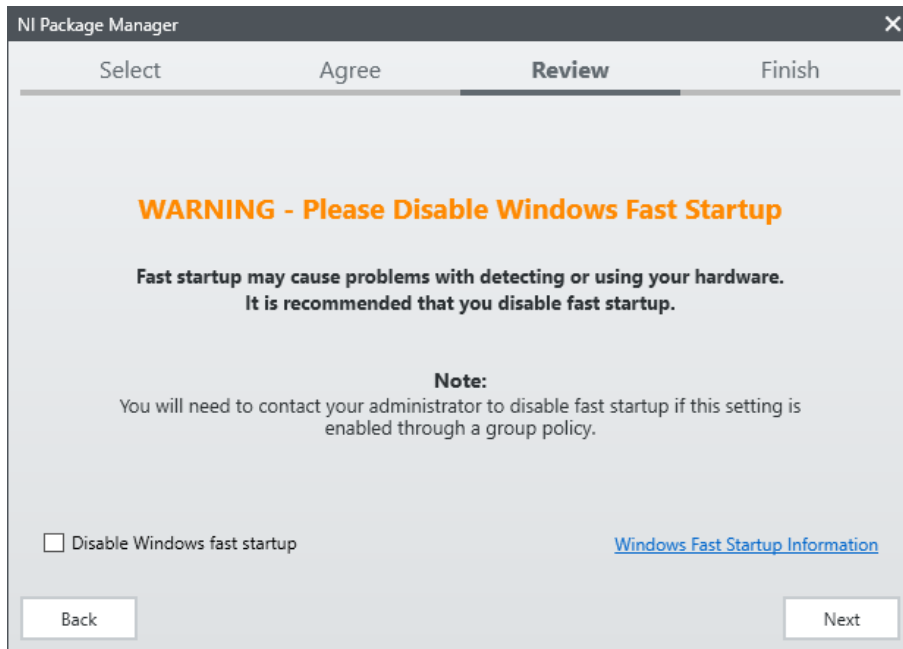
Run *Install.exe*.

Accept the license agreement.

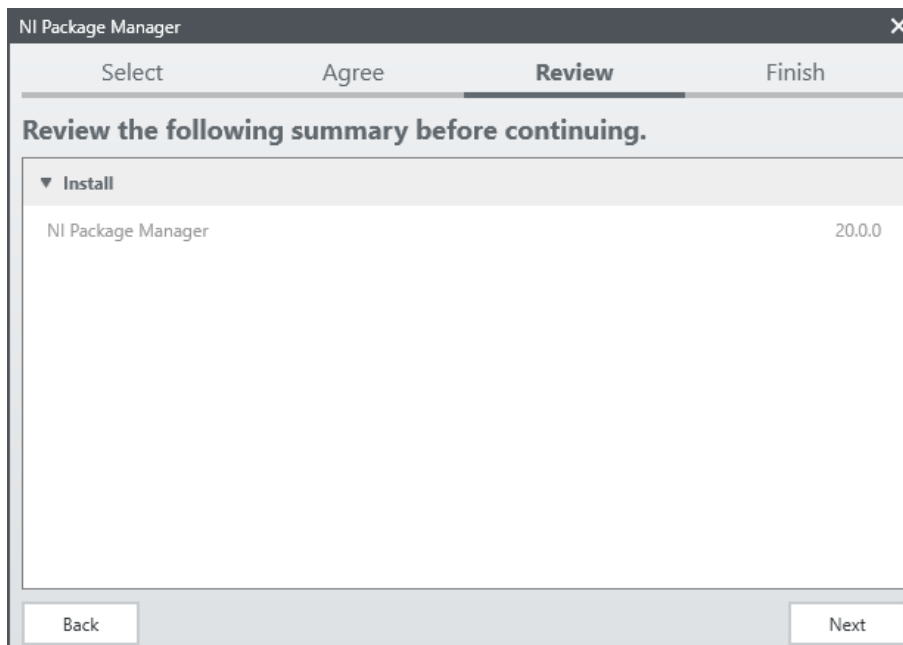


Disabling Fast Startup is not necessary unless a hardware problem is encountered.

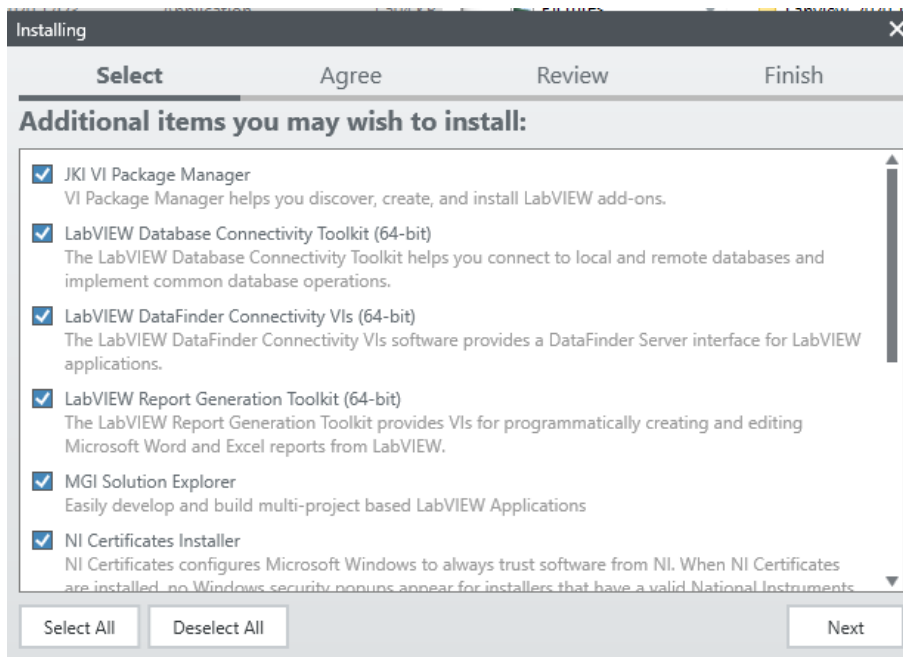
Untick *Disable Windows fast startup*.



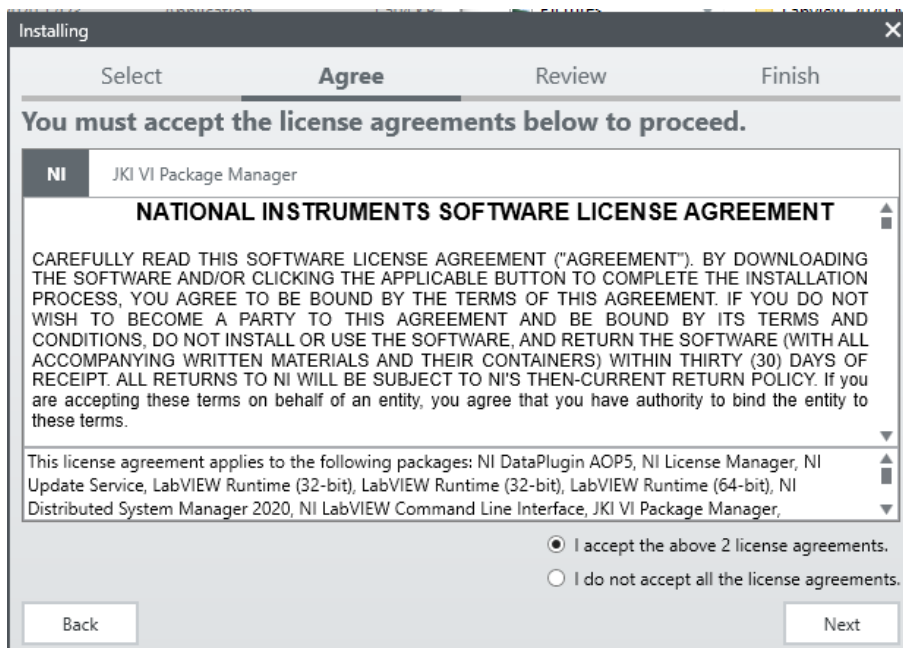
Click *Next*



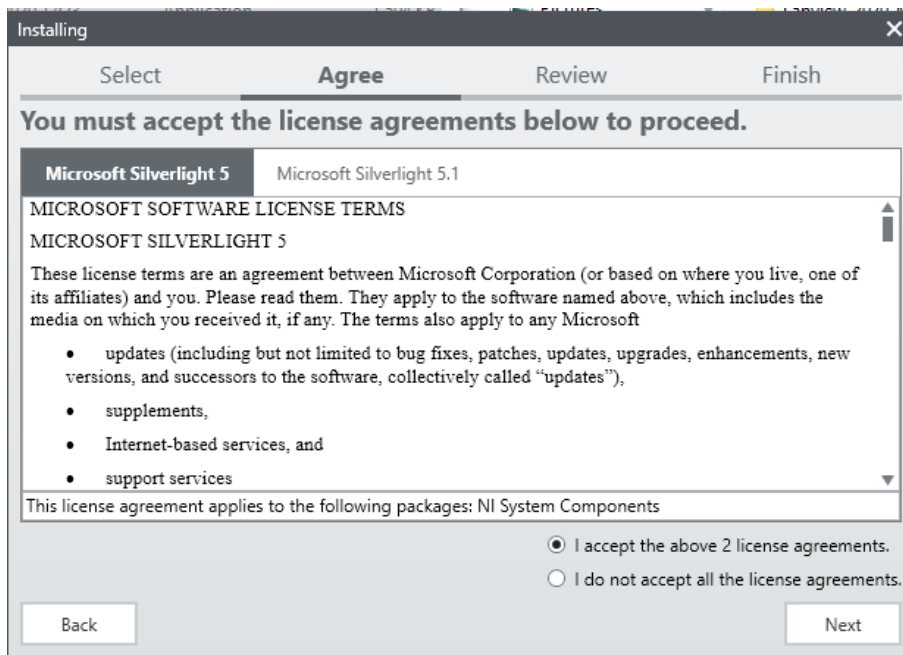
Select appropriate options. Suggest leaving as is.



Accept the license agreements.

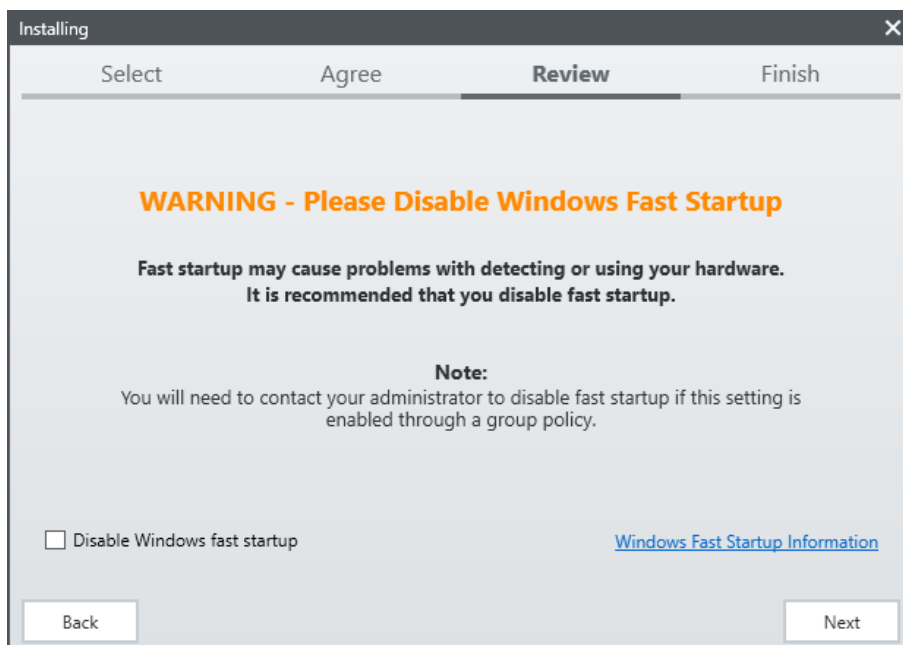


Accept further license agreements.

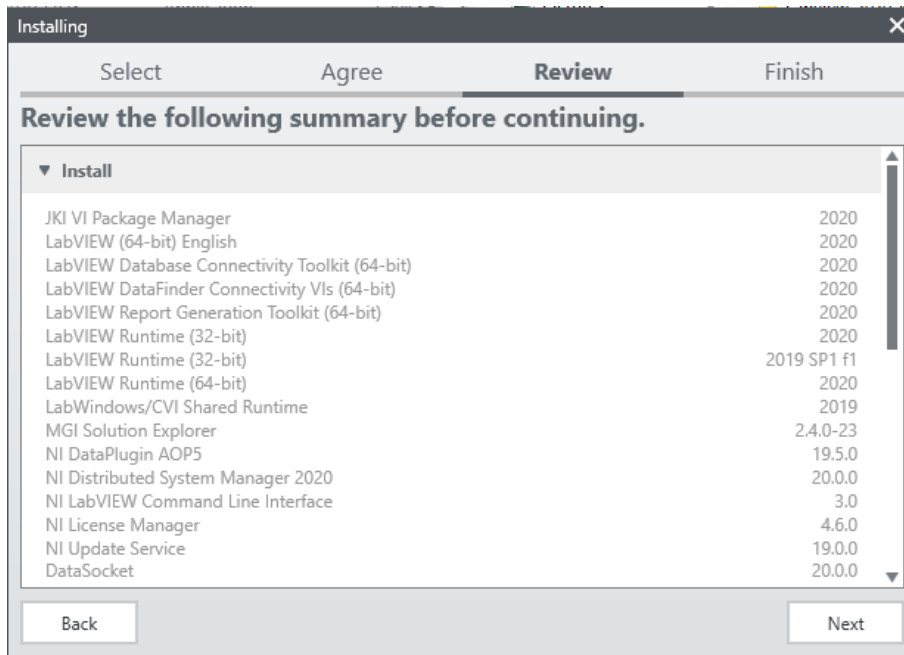


Disabling Fast Startup is not necessary unless a hardware problem is encountered.

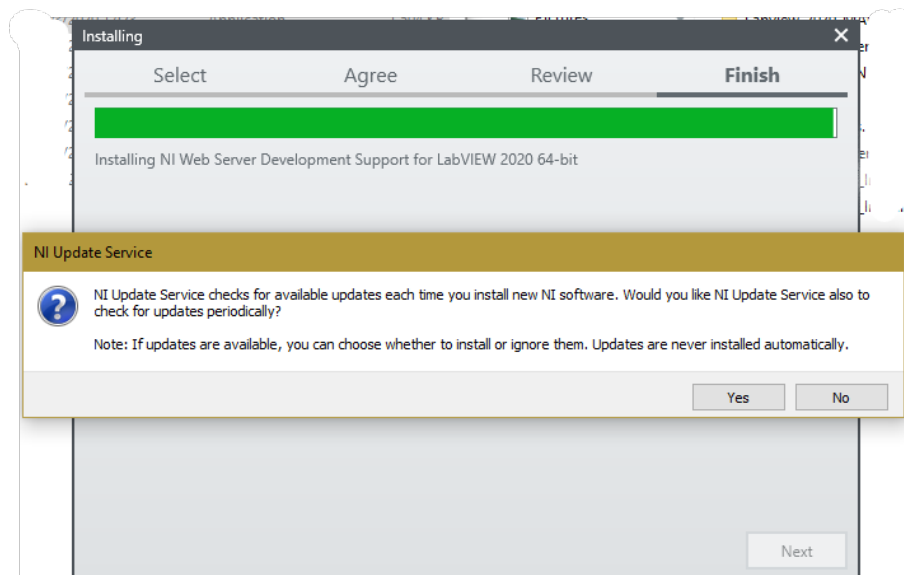
Untick *Disable Windows fast startup*.



Review installation summary.

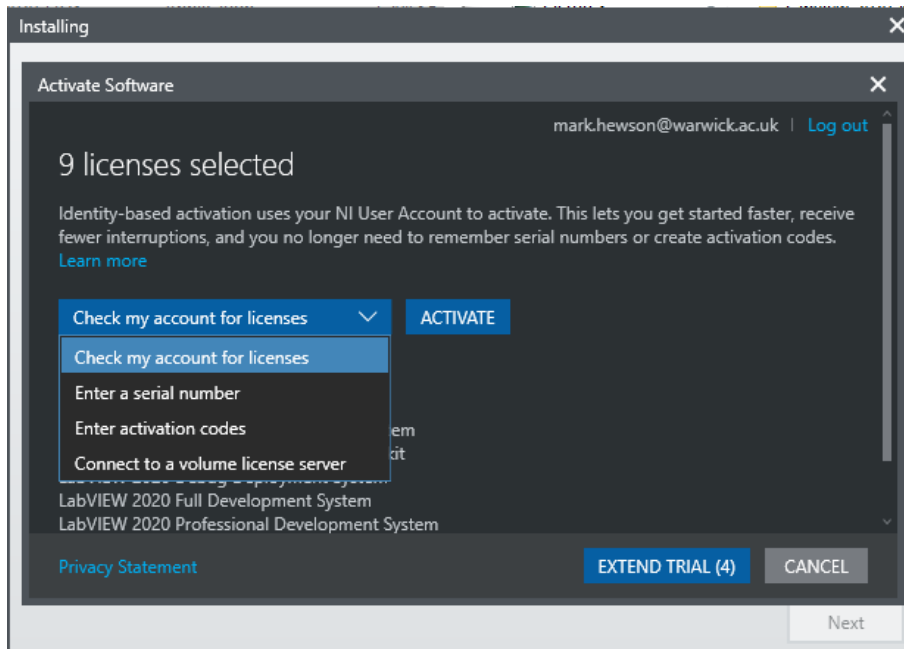


Updates are optional. Please select your choice.



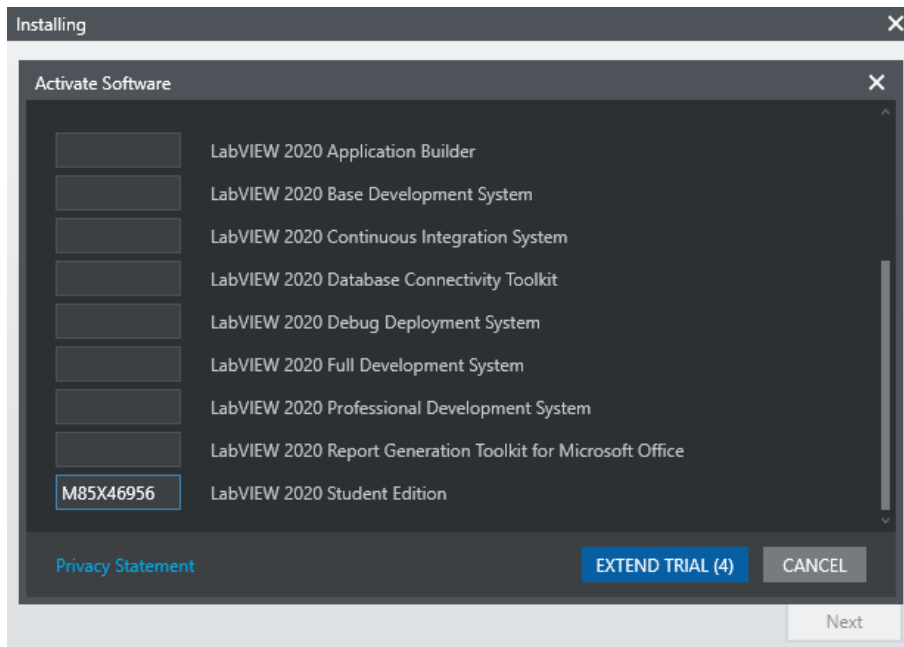
Activate Software.

Select dropdown and click on *Enter Serial Number*.

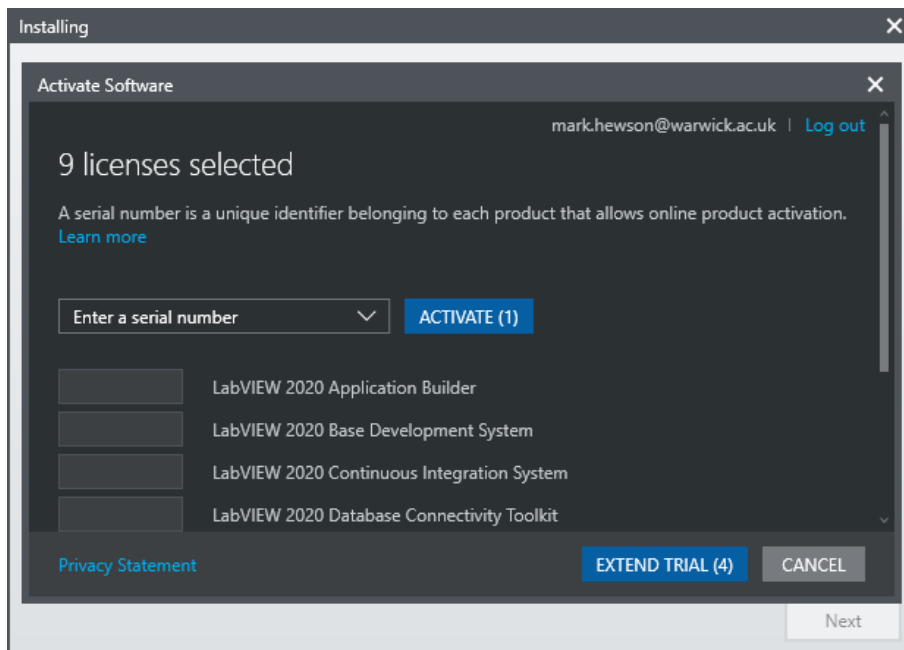


Next to Student Edition enter **M85X95790**.

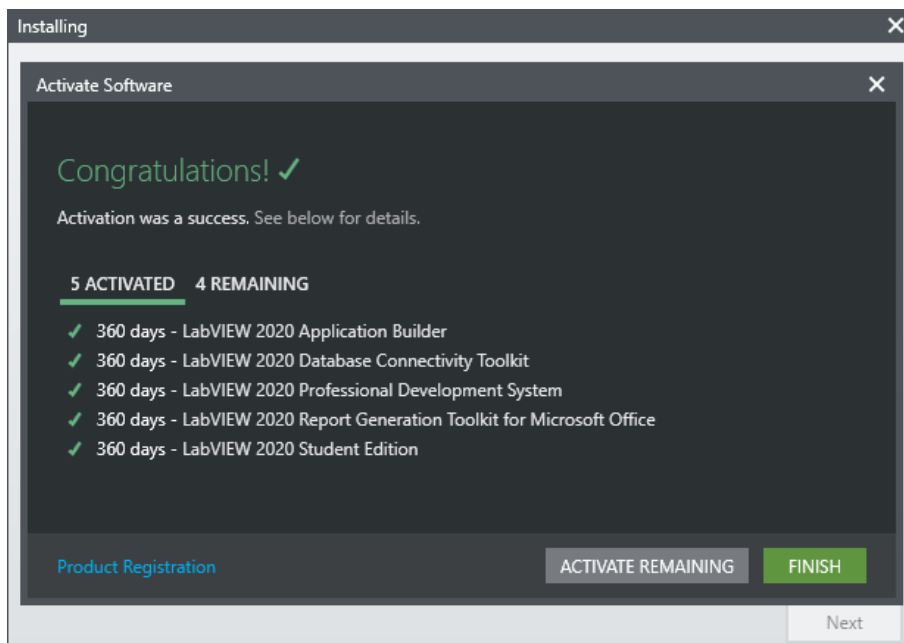
Use the number above and not the one in the graphic below.



Scroll back up and click *Activate*.



Click *Finish*.



## Reboot Computer.

