



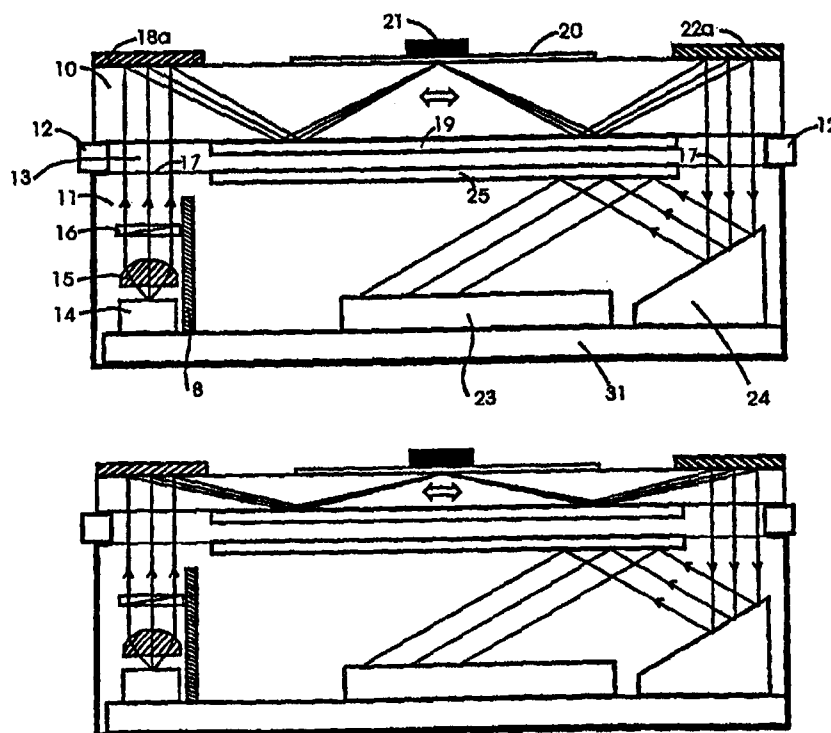
INTERNATIONAL APPLICATION PUBLISHED UNDER THE PATENT COOPERATION TREATY (PCT)

(51) International Patent Classification ⁷ : G01N 21/55		A1	(11) International Publication Number: WO 00/46589
			(43) International Publication Date: 10 August 2000 (10.08.00)
(21) International Application Number: PCT/DK00/00036 (22) International Filing Date: 28 January 2000 (28.01.00) (30) Priority Data: PA 1999 00118 1 February 1999 (01.02.99) DK 60/118,111 1 February 1999 (01.02.99) US (71) Applicant (for all designated States except US): VIR A/S [DK/DK]; Kuldysen 10, DK-2630 Tåstrup (DK). (72) Inventor; and (75) Inventor/Applicant (for US only): THIRSTRUP, Carsten [DK/DK]; Enighedsvej 6, 3.tv., DK-2920 Charlottenlund (DK). (74) Agent: PLOUGMANN, VINGTOFT & PARTNERS A/S; Sankt Annæ Plads 11, P.O. Box 3007, DK-1021 Copenhagen K (DK).		(81) Designated States: AE, AL, AM, AT, AT (Utility model), AU, AZ, BA, BB, BG, BR, BY, CA, CH, CN, CR, CU, CZ, CZ (Utility model), DE, DE (Utility model), DK, DK (Utility model), DM, EE, EE (Utility model), ES, FI, FI (Utility model), GB, GD, GE, GH, GM, HR, HU, ID, IL, IN, IS, JP, KE, KG, KP, KR, KR (Utility model), KZ, LC, LK, LR, LS, LT, LU, LV, MA, MD, MG, MK, MN, MW, MX, NO, NZ, PL, PT, RO, RU, SD, SE, SG, SI, SK, SK (Utility model), SL, TJ, TM, TR, TT, TZ, UA, UG, US, UZ, VN, YU, ZA, ZW, ARIPO patent (GH, GM, KE, LS, MW, SD, SL, SZ, TZ, UG, ZW), Eurasian patent (AM, AZ, BY, KG, KZ, MD, RU, TJ, TM), European patent (AT, BE, CH, CY, DE, DK, ES, FI, FR, GB, GR, IE, IT, LU, MC, NL, PT, SE), OAPI patent (BF, BJ, CF, CG, CI, CM, GA, GN, GW, ML, MR, NE, SN, TD, TG). Published With international search report.	

(54) Title: A SURFACE PLASMON RESONANCE SENSOR

(57) Abstract

The present invention provides surface plasmon resonance (SPR) sensors comprising a sensor chip constructed of laterally integrated arrays of planar sensor chip units and an optical transducer constructed of laterally integrated arrays of planar optical transducer units. The replaceable sensor chip is separated from the optical transducer by a gap and with perpendicular optical interconnections between the sensor chip and the optical transducer. Focusing and collimating optics and sensing areas are integrated on the same sensor chip, whilst the optical interconnections between the sensor chip and the optical transducer are based on collimated light beams incident perpendicular to the interfaces. The focusing optics comprises a combination of a reflective diffractive optical element on the topside surface and an optional planar mirror on the backside surface of the sensor chip units.



FOR THE PURPOSES OF INFORMATION ONLY

Codes used to identify States party to the PCT on the front pages of pamphlets publishing international applications under the PCT.

AL	Albania	ES	Spain	LS	Lesotho	SI	Slovenia
AM	Armenia	FI	Finland	LT	Lithuania	SK	Slovakia
AT	Austria	FR	France	LU	Luxembourg	SN	Senegal
AU	Australia	GA	Gabon	LV	Latvia	SZ	Swaziland
AZ	Azerbaijan	GB	United Kingdom	MC	Monaco	TD	Chad
BA	Bosnia and Herzegovina	GE	Georgia	MD	Republic of Moldova	TG	Togo
BB	Barbados	GH	Ghana	MG	Madagascar	TJ	Tajikistan
BE	Belgium	GN	Guinea	MK	The former Yugoslav	TM	Turkmenistan
BF	Burkina Faso	GR	Greece		Republic of Macedonia	TR	Turkey
BG	Bulgaria	HU	Hungary	ML	Mali	TT	Trinidad and Tobago
BJ	Benin	IE	Ireland	MN	Mongolia	UA	Ukraine
BR	Brazil	IL	Israel	MR	Mauritania	UG	Uganda
BY	Belarus	IS	Iceland	MW	Malawi	US	United States of America
CA	Canada	IT	Italy	MX	Mexico	UZ	Uzbekistan
CF	Central African Republic	JP	Japan	NE	Niger	VN	Viet Nam
CG	Congo	KE	Kenya	NL	Netherlands	YU	Yugoslavia
CH	Switzerland	KG	Kyrgyzstan	NO	Norway	ZW	Zimbabwe
CI	Côte d'Ivoire	KP	Democratic People's	NZ	New Zealand		
CM	Cameroon		Republic of Korea	PL	Poland		
CN	China	KR	Republic of Korea	PT	Portugal		
CU	Cuba	KZ	Kazakstan	RO	Romania		
CZ	Czech Republic	LC	Saint Lucia	RU	Russian Federation		
DE	Germany	LI	Liechtenstein	SD	Sudan		
DK	Denmark	LK	Sri Lanka	SE	Sweden		
EE	Estonia	LR	Liberia	SG	Singapore		

A SURFACE PLASMON RESONANCE SENSOR

FIELD OF INVENTION

5 The present invention relates to surface plasmon resonance (SPM) sensors. More particularly, the present invention relates to the field of water quality monitoring, where there is a need for sensors being able to measure a large amount of different compounds having the potential of polluting our water resources. Other possible applications are food quality monitoring, process control, biological components including
10 human immunodeficiency virus (HIV) core protein detection and in gene expression monitoring.

BACKGROUND OF THE INVENTION

15 Surface plasmons (SPs) are normal modes of charge density that exists at the interface between a dielectric and a metal/semiconductor. It was discovered 30 years ago that the coupling between SPs and the electromagnetic field of light is sensitive to the changes in the optical properties of the dielectric medium close to a metal surface. SPR sensors have attracted attention primarily for medical and environmental
20 applications.

Monitoring of different analytes may be determined by an array of different molecular recognition elements (MREs), each element having a specific response to a particular analyte. The MREs can be biological, biochemical or chemical recognition elements or
25 a combination of these elements.

MREs can for example be immobilized directly on the surface of a metal film supporting SP waves at resonance with the light (SPR metal film), e.g. through thiols binding to a gold surface.
30

Alternatively, the MREs can be immobilized for example through covalent binding in a suitable polymer film (e.g. hydrogel) that is a few hundred nanometers thick coating the SPR metal film. Depending on applications, various sensing schemes of MREs have been reported including antibody-antigen reactions, arrays of oligonucleotides or

probes originating from cDNA libraries for DNA hybridization analysis, molecular imprinting techniques, ionic interaction with ionophores and chromo-ionophores, and electrochemical interaction where the SPR metal film acts as one of the two electrodes (the cathode or the anode). Although these MREs are very different in nature, they have the inherent property that they all make use of surface or interface sensitive bio-/chemical interactions, and these interactions can quantitatively be monitored using a SPR sensing scheme.

Since SPs propagate in the transverse magnetic mode (TM mode), optical excitation is only possible in cases where the electric field is polarized parallel to the incident plane (TM polarization) and the wave vectors of the light and the SP are matched. The wave vector k_{SP} of the SP at the metal/dielectric interface (i.e. the interface between the metal and the sample to be measured) and at a wavelength λ is given approximately by:

15

$$k_{SP} \sim \frac{2\pi}{\lambda} \sqrt{\frac{\epsilon_m \epsilon_s}{\epsilon_m + \epsilon_s}} \quad (1)$$

where ϵ_s and ϵ_m are the real parts of the dielectric constants of the sample and the metal, respectively. The incident light cannot couple directly to SPs on smooth surfaces, since for negative values of ϵ_m as is the case for metals, the wavevector for the light and the SP can never be matched. SPs can be excited either electronically, optically using a grating or optically using coupling of evanescent waves of light to a metal surface. The latter approach is often performed using the Kretschmann configuration, which consists of a thin metal film coating one face of a high index prism ($n_p \sim 1.4-1.7$).

Light passing through the prism increases momentum and is totally reflected from the metal surface at an angle θ , which is greater than the critical angle between the prism and the sample. The component of the wave vector of light k_{ev} , being parallel to the metal/dielectric interface and incident on the metal surface with a wavelength λ , is given by:

$$k_{ev} \sim \frac{2\pi}{\lambda} \sqrt{\epsilon_g} \sin\theta \quad (2)$$

where ϵ_g is the dielectric constant of the prism. The parameters ϵ_m and ϵ_g are usually fixed and ϵ_s is the dielectric constant of the sensing area to be measured and its value changes according to the analyte detection. At wave vector matching, $k_{SP} = k_{ev}$, the light interacts strongly with the SP giving rise to a large decrease in the reflectivity of the light from the metal/dielectric interface. This condition characterizes the SPR and can be measured using various methods including focusing a beam with an angular band of the light covering the SPR angle, scanning the wavelength of the incident light or a combination of both methods.

A commercial SPR system from the company BIAcore is based on a Kretschmann configuration, but where the SPR metal film is disposed on a replaceable glass plate which is physically separated from a glass prism by means of a refractive index matching gel disposed in between the glass prism and the glass plate. This instrument is large and expensive and there has been much effort in the art to provide small and compact SPR sensors.

US 5,629,774 describes a portable SPR sensor with the object of measuring analyte in a fluid. The sensor comprises a monochromatic light source, a surface plasmon resonance-sensitive device for reflecting the light and a detector based on one or more photo-detectors combined with an "opening" such as a pin hole. The "opening" defines a particular angle on the critical side of the SPR resonance minimum. Small changes in the sample produces large changes in the reflected intensity monitored by the light detector. Compared to systems employing a scanning mechanism or using a focusing light beam with an angular band of light covering the SPR angle, a disadvantage of the system described in US 5,629,774 is related to the use of a single detector which requires a more precise alignment of the system.

In EP 0 797 090, all mirrors, the sensing layer, the photo-detector array and optionally the light source are integrated in the same house. A disadvantage of this configuration is the fact that all components have to be replaced when replacing the sensing layer.

Optional configurations have been described in EP 0 797 091, where a transparent base housing and a detachable prism-like optical housing are index matched to avoid undesirable refraction of the light rays. This is performed using index matching gel between the base housing and the optical housing or fabricating concave portions in the base housing and complementary convex portions in the optical housing at the intersections between the two housings. Both options seem to be complicated solutions for practical working SPR sensors.

It is a disadvantage of the above-mentioned systems that these systems apply an index matching gel. The gel is inconvenient to work with and it may cause problems if comes in contact with some of the optical or bio-/chemical elements.

EP 0 805 347 describes a surface plasmon sensor where the metal layer supporting the surface plasmons is positioned on a glass substrate. An incoming optical light beam is directed towards the metal layer using a first transmission grating. The incoming optical light beam is also focussed by the first transmission grating. The directed optical light beam is reflected off the metal layer and propagates towards a second transmission grating. The second transmission grating directs the transmitted beam towards a detector.

It is a disadvantage of the sensor described in EP 0 805 347 that the incoming light beam is incident under angle that differs from normal incidence.

Generally in the prior art, the SPR sensing layers, the light sources, the mirrors and the detectors have been arranged in three-dimensional configurations where at least one component is aligned at an angle close to the SPR angle ($\sim 50^\circ$ - 80°) compared to the other components. This implies that integration of sensors with large arrays of sensing areas cannot be readily made. Integration shall preferably be carried out laterally, which requires a planar configuration of layers or planar configurations aligned parallel to each other

Therefore, there is a need in the prior art of compact SPR sensors comprising dispensable sensor chips with a large array of sensing areas, with uncritical alignment be-

tween sensor chips and optical transducers, and with no requirements of using index matching gels.

It is an object of the present invention to provide a SPR sensor comprising a sensor
5 chip constructed of laterally integrated arrays of planar sensor chip units (SCU)

It is a further object of the present invention to provide a SPR sensor comprising an optical transducer constructed of laterally integrated arrays of planar optical transducer units.

10

It is a still further object of the present invention to provide a SPR sensor comprising two separable units - a sensor unit and a transducer unit.

It is a still further object of the present invention to provide a SPR sensor with un-
15 critical alignment between the sensor unit and the transducer unit.

It is a still further object of the present invention to provide a SPR sensor wherein the use of index matching gel is avoided.

20 SUMMARY OF THE INVENTION

The above-mentioned objects are complied with by providing, in a first aspect, a surface plasmon resonance sensor comprising a first unit and a second unit, said first and second units being separable, and wherein said first unit comprises:

25

- a first housing,

- a film of electrically conducting material being adapted to support surface plasmons, said film being hold by a first exterior surface part of the first housing,

30

- optical input means positioned on a second exterior surface part of the first housing so as to receive an optical light beam from the second unit,

- optical output means positioned on a third exterior surface part of the first housing so as to transmit an optical light beam to the second unit,
- a first set of optical elements being adapted to direct the received optical light beam from the first unit towards the electrically conducting film,
- a second set of optical elements being adapted to direct an optical light beam from the electrically conducting film towards the optical output means so as to transmit the optical light beam from the electrically conducting film to the second unit,

and wherein said second unit comprises:

- a second housing,
- means for emitting an optical light beam,
- a first set of optical elements being adapted to prepare the emitted optical light beam,
- optical output means positioned on a first exterior surface part of the second housing so as to transmit the prepared optical light beam to the first unit,
- optical input means positioned on a second exterior surface part of the second housing so as to receive an optical light beam from the first unit,
- detecting means being adapted to detect the optical light beam received from the first unit,
- a second set of optical elements being adapted to direct the received optical light beam from the first unit towards the detecting means,

wherein the propagation directions of the optical light beams at the positions of the optical input and optical output means are essentially perpendicular to the exterior

surface parts of the first and the second housing so as to avoid refraction of the optical light beams upon entry of said optical light beams into the first and second unit.

In this and the following aspects of the present invention essentially perpendicular
5 means that the angle of incidence may be in the range -10° - 10° , preferably in the range -5° - 5° , more preferably in the range -2° - 2° and even more preferably in the range -0.5° - 0.5° .

The emitting means may comprise a laser source, such as a semiconductor laser di-
10 ode. The light emitting means may emit light at essentially a single wavelength. Alternatively, the light emitting means may emit light at a plurality of wavelengths using e.g. a light emitting diode.

The first set of optical elements of the second unit may comprise means for colli-
15 mating the emitted optical light beam. The collimating means may comprise lens means.

By collimated - as mentioned here and in some of the following aspects - is meant that the angular beam spread of the emitted optical light beam may be less than 10° ,
20 preferably less than 5° , more preferably less than 2° and even more preferably less than 0.5° .

The first set of optical elements of the second unit may further comprise means for polarizing the emitted optical light beam. This polarizing means may be any kind of
25 polarizing film, prism arrangement or voltage controlled variable retarder.

The input and output means of the first and second units may comprise antireflecting coatings.

30 The detecting means may comprise an array of photosensitive elements, such as a multiple photo detector array, a charge coupled device or a complementary metal oxide semiconductor image sensor. The sensor may further comprise a light shield member.

The first set of optical elements of the first unit may comprise a diffractive member, such as a diffractive grating or a holographic grating. In a similar way, the second set of optical elements of the first unit may comprise a diffractive member, such as a diffractive grating or a holographic grating. The diffractive members may be formed
5 by reflective members. The second set of optical elements may also comprise a reflective member, such as a reflective mirror.

The electrically conducting film may comprise a metal film, such as a gold film, a silver film, an aluminum film or a titanium film. The electrically conducting film may be
10 formed by a plurality of electrically conducting films, said plurality of films being arranged in a laterally extending pattern.

To support long range surface plasmon resonances a layer of dielectric material may be positioned between the electrically conducting film and the first exterior surface
15 part of the first housing. In case the surface plasmon resonance sensor comprises a plurality of electrically conducting layers the sensor may further comprise a layer of dielectric material being positioned between each of the plurality of electrically conducting films and the first exterior surface part of the first housing.

20 The surface plasmon resonance sensor may further comprise moving means being adapted to move the first and second unit relative to each other so as to move the focus point of an optical light beam relative to an electrically conducting film. Alternatively or in addition, the surface plasmon resonance sensor may comprise moving means being adapted to move the first and second unit relative to each other so as
25 to vary the angle of incidence of an optical light beam directed towards an electrically conducting film.

The surface plasmon resonance sensor may comprise two or more surface plasmon resonance sensors preferably being arranged in a lateral extending pattern.
30

In a second aspect, the present invention relates to a method of determining the bio-/chemical composition of a sample using a surface plasmon resonance sensor, said surface plasmon resonance sensor comprising a first unit and a second unit, said first and second units being separable, and wherein said first unit comprises:

- a first housing,
- a film of electrically conducting material being adapted to support surface plasmons, said film being held by a first exterior surface part of the first housing,
- 5 - optical input means positioned on a second exterior surface part of the first housing so as to receive an optical light beam from the second unit,
- optical output means positioned on a third exterior surface part of the first
- 10 housing so as to transmit an optical light beam to the second unit,
- a first set of optical elements being adapted to direct the received optical light beam from the first unit towards the electrically conducting film,
- 15 - a second set of optical elements being adapted to direct an optical light beam from the electrically conducting film towards the optical output means so as to transmit the optical light beam from the electrically conducting film to the second unit,
- 20 and wherein said second unit comprises:
 - a second housing,
 - means for emitting an optical light beam,
 - 25 - a first set of optical elements being adapted to prepare the emitted optical light beam,
 - optical output means positioned on a first exterior surface part of the second
 - 30 housing so as to transmit the prepared optical light beam to the first unit,
 - optical input means positioned on a second exterior surface part of the second housing so as to receive an optical light beam from the first unit,

- detecting means being adapted to detect the optical light beam received from the first unit,

- a second set of optical elements being adapted to direct the received optical light beam from the first unit towards the detecting means,

wherein the propagation directions of the optical light beams at the positions of the optical input and optical output means are essentially perpendicular to the exterior surface parts of the first and the second housing so as to avoid refraction of the optical light beams upon entry of said optical light beams into the first and second unit.

In a third aspect, the present invention relates to a surface plasmon resonance sensor comprising a first unit, said first unit comprising:

- a first housing,

- a layer of electrically conducting material being adapted to support surface plasmons, said layer being held by a first exterior surface part of the first housing,

- optical input means positioned on a second exterior surface part of the first housing, said optical input means being adapted to receive an optical light beam,

- optical output means positioned on a third exterior surface part of the first housing, said optical output means being adapted to transmit an optical light beam,

- a first diffractive optical element being adapted to direct the received optical light beam towards the electrically conducting layer,

- a second diffractive optical element being adapted to direct a reflected optical light beam from the electrically conducting layer towards the optical output means,

wherein the propagation directions of the optical light beams at the positions of the optical input and optical output means are essentially perpendicular to the exterior surface parts of the first housing so as to avoid refraction of the optical light beams at the positions of the optical input and optical output means.

5

The surface plasmon resonance sensor according to the third aspect may further comprise a second unit, said second unit comprising:

10

- a second housing,

- means for emitting an optical light beam,

- a set of optical elements being adapted to prepare the emitted optical light beam,

15

- optical output means positioned on a first exterior surface part of the second housing, said optical output means being adapted to transmit the prepared optical light beam to the first unit,

20

- optical input means positioned on a second exterior surface part of the second housing, said optical input means being adapted to receive an optical light beam from the first unit,

- detecting means being adapted to detect the received optical light beam from the first unit,

25

wherein the propagation directions of the optical light beams at the positions of the optical input and optical output means are essentially perpendicular to the exterior surface parts of the second housing so as to avoid refraction of the optical light beams at the positions of the optical input and optical output means.

30

The second unit may further comprise an optical element being adapted to direct the received optical light beam from the first unit towards the detecting means.

The light emitting means may comprise light sources as described in relation to the first aspect of the present invention. The set of optical elements of the second unit may comprise collimating and/or polarizing means as described in accordance with the first aspect of the present invention.

5

The input and output means of the first and second units may be coated with an antireflecting coating.

As with the first aspect of the present invention, the detecting means may comprise

10 an array of photosensitive elements, such as a multiple photo detector array, a charge coupled device or a complementary metal oxide semiconductor image sensor. The first and second diffractive optical element of the first unit may comprise an optical grating, such as a reflective holographic grating.

15 In a fourth aspect, the present invention relates to a surface plasmon resonance sensor comprising:

- a transparent member,

20 - a layer of electrically conducting material being adapted to support surface plasmons, said layer being held by an exterior surface part of the member,

- a first optical grating being held by a first exterior surface part of the member and being adapted to direct a received optical light beam towards the electrically
25 conducting layer, wherein the propagation direction of the received optical light beam at the position of the first optical grating is essentially perpendicular to the first exterior surface part of the member and wherein the received optical light beam is collimated, and

30 - a second optical grating being held by a second exterior surface part of the member and being adapted to receive an optical light beam from the electrically conducting layer and being adapted to re-emit the optical light beam received from the electrically conducting layer, wherein the propagation direction of the re-emitted optical light beam at the position of the second optical grating is essen-

tially perpendicular to the second exterior surface part of the member and wherein the re-emitted optical light beam is collimated.

The surface plasmon resonance sensor according to the fourth aspect may further
5 comprise

- means for emitting an optical light beam,
- a set of optical elements being adapted to prepare the emitted optical light beam,
- 10 and
- means for detecting the re-emitted optical light beam.

Even further, the surface plasmon resonance sensor according to the fourth aspect
15 may comprise an optical element being adapted to direct the re-emitted optical light beam towards the detecting means.

The light emitting means may comprise light sources as described in relation to the first and third aspect of the present invention. The set of optical elements of the
20 second unit may comprise collimating and/or polarizing means.

The detecting means may comprise an array of photosensitive elements, such as a multiple photo detector array, a charge coupled device or a complementary metal oxide semiconductor image sensor.

25

BRIEF DESCRIPTION OF THE DRAWINGS

Fig. 1 is a schematic illustration of a conventional surface plasmon resonance sensor based on the Kretschman configuration and a corresponding plot of the reflectivity of
30 the light reflected from the surface plasmon sensing area as a function of angle of incidence. Plots are depicted for the case of no analyte response (solid curve) and for the case of analyte response (dashed curve).

Fig. 2 illustrates schematically cross sections of sensor chip units (SCUs) for 5 different configurations (a-e) in the present invention.

Fig. 3 is a schematic cross sectional illustration of a sensor chip unit and the corresponding optical transducer unit separated by a gap in the preferred embodiment of the present invention based on a substantially monochromatic light source and coupling of the light at angular bands covering the SPR angle. In a), the sensor chip unit is depicted for a SPR angle of $\sim 60^\circ$ and in b), the sensor chip unit is depicted for a SPR angle of $\sim 75^\circ$. Light rays originating from the light source are plotted as solid lines.

Fig 4 illustrates two other embodiments of the present invention, each with a sensor chip unit and the corresponding optical transducer unit separated by a gap. The configuration in Fig.4(a) is based on a polychromatic light source, a fixed coupling angle and with a grating in the optical transducer unit that enables measurements of the spectral band of the light. Light rays originating from the light source are plotted as solid lines. The configuration in Fig. 4(b) is based on a monochromatic light source and coupling of the light at angular bands covering the SPR angle. Light rays originating from the first light source are plotted as solid lines and light rays originating from the second light source are plotted as dashed lines.

Fig. 5 are schematic top view illustrations of the embodiment of the present invention from Fig. 4(a) comprising a) a sensor chip unit and b) an optical transducer unit. In c) and d), an array of two sensor chip units and two optical transducer units are illustrated, respectively; and in (e) and the (f), an array of four sensor chip units and four optical transducer units are illustrated, respectively.

Fig. 6 is a schematic cross sectional illustration of a sensor chip unit and the corresponding optical transducer unit separated by a gap in the fourth embodiment of the present invention based on a monochromatic light source and coupling of the light at angular bands covering the SPR angle. In this configuration, the sensing areas are positioned on the backside surface of the sensor chip unit.

Fig. 7 is a schematic top view illustration of the embodiment of present invention as shown in Fig. 6 with a) one sensor chip unit and b) the corresponding optical transducer unit. In c) and d), an array of two sensor chip units and two optical transducer units, respectively, are illustrated and in e) and the f), an array of four sensor chip units and four optical transducer units, respectively, are illustrated.

Fig. 8 is a schematic cross sectional illustration of a sensor chip unit and an optical transducer unit separated by a gap in one embodiment of the present invention based on a monochromatic light source and coupling of the light at angular bands covering the SPR angle. After being reflected from the SPR sensing area, the light rays are reflected multiple times between two flat mirrors on the backside surface and the top-side surface of the sensor chip unit.

Fig. 9 (a) illustrates an example of a reflective diffractive optical element (RDOE) as employed in the present invention having an aperture D , a grating distance a_p and a grating angle α_p for the p 'th grating element. Fig. 9(b) illustrates collimated light rays being reflected to light rays and converging to a focal point at one side of the RDOE in (a). Fig. 9(c) illustrates another example of a RDOE, where collimated light rays are reflected to light rays collimated at one side of the RDOE.

20

Fig 10 (a) shows an alternative configuration of the RDOE as employed in the present invention having an aperture D , a grating distance a_p , a grating angle α_p and a second grating angle β_p for the p 'th grating element. Fig. 10(b) illustrates collimated light rays being reflected to light rays and converging to a focal point at one side of the RDOE in (a). Fig. 10(c) illustrates another example of a RDOE, where collimated light rays are reflected to light rays collimated at one side of the RDOE.

DETAILED DESCRIPTION OF THE INVENTION

Fig. 1 illustrates a conventional Kretschmann configuration of a SPR sensor consisting of a high index prism (2), a thin metal film (1) coating on one side of the prism and a bio-/chemical sensing thin film area (3) covering the metal film. Employing a lens (4), collimated monochromatic light is focused onto the metal film through the prism (2). The light beam has a certain beam width D , and a range of angular bands θ

varying from θ_{\min} to θ_{\max} are incident on the metal film. Another lens (5) images the light beam reflected from the metal film onto a detector array (6). The range of θ is matched to cover the SPR angle θ_{SP} , which is determined as a minimum in the reflectivity of light by the detector array (6). When changes in the ambient conditions (7) occur, the layer thickness and/or the refractive index of the bio-/chemical sensing area (3) are changed. This gives rise to a change in the SPR response by a displacement in the position of θ_{SP} as illustrated schematically in Fig. 1, where the solid SPR curve moves to the position of the dashed SPR curve.

10 The present invention incorporates the measurement principle based on imaging a range of angular bands or a range of wavelengths onto a single detector array. All components in the present invention are either available commercially or can be made using state of the art fabrication techniques. The SPR sensor comprises a combination of:

15

1) a replaceable sensor chip constructed of laterally integrated arrays of planar sensor chip units (SCUs), and

20

2) an optical transducer constructed of laterally integrated arrays of planar optical transducer units (OTUs).

Five different configurations of sensor chip units (SCUs) of the present invention are illustrated in Figs.2(a-e). Via a first set of optical elements (18a), a collimated light beam entering the SCU perpendicularly to the backside surface of the SCU is directed towards a SPR film (20) being disposed on the topside surface of the SCU and underneath one or more sensing areas (21). Via a second set of optical elements (22a) the light beam being reflected from the SPR metal film is collimated and exits the SCU perpendicular to the backside surface of the SCU.

30 In Fig. 2(a), the first set of optical elements, the SPR metal film and the second set of optical elements are disposed on the topside of the SCU and a reflective mirror is disposed on the backside surface of the SCU. In Figs. 2(b)-(d), the first set of optical elements and the second set of optical elements are disposed on the topside of the SCU, and the SPR metal film is disposed on the backside of the SCU. In Fig. 2(e), the

first set of optical elements and the second set of optical elements are disposed on the backside surface of the SCU, and the SPR metal film is disposed on the topside of the SCU. The present invention covers configurations, where the light beam propagating in the SCU is either focused on the SPR metal film as in Figs. 2(a), (b) and (e), or the light beam propagating in the SCU is focused in between the first set of optical elements and the second set of optical elements as in Fig. 2(d), or the light beam propagating in the SCU is collimated as in Fig. 2(c). For the configurations in Figs. 2(a-d), the first and the second set of optical elements are mirrors (cylindrical parabolic mirrors) or reflective diffractive optical elements (RDOE). For the configuration in Fig. 2(e), the first and the second set of optical elements are lenses, microlens arrays or transmission diffractive optical elements.

Fig. 3 depicts a first and a preferred embodiment of the present invention, where the SCU as depicted in Fig. 2(a) and an optical transducer unit (OTU) (11) are separated by means of a support frame (12), which leaves a gap (13) between the two units.

A light beam from a monochromatic light source (14) mounted in a base plane (31) is collimated by a lens or a lens system (15) and polarized by a polarizer (16). The light beam passes through a transparent separation plane (17) and enters the SCU (10) perpendicularly to the backside surface of the SCU. A light shield (8) shields the detector array from stray light emerging from the light source (14) and prevents interference between light emitted from the light source (14) and light reflected from the surface of the detector (23). Inside the SCU, the light beam is reflected from a reflective diffractive optical element (RDOE) (18a) transforming the light beam into a cylindrically focusing light beam. Via a flat reflective mirror (19) disposed on the backside surface of the SCU, the light beam is subsequently reflected and focused onto a line on a SPR metal film (20) underneath one or more sensing areas (21) on the top. The focused light beam comprises angular bands covering the SPR angle. After being reflected from the SPR metal film (20), the light beam is reflected from the flat mirror (19). Via a second RDOE (22a), it is transformed into a collimated light beam again, which exits the SCU perpendicularly to the backside surface of the SCU and reenters the OTU perpendicularly to the transparent separation plane (17). A flat mirror (24) mounted in the base plane combined with a flat mirror (25) mounted in the center of the transparent separation plane images the collimated light beam onto a detector

array (23). Alternatively, the mirrors (24) and (25) can be omitted or they can be replaced by other optical means such as a lens system.

Typically, the gap between the SCU (10) and the OTU (11) is filled with atmospheric air and since the refractive index of the substrate material of the SCU is ~ 1.6 , the internal critical angle for total reflection $\theta_c \sim 39^\circ$. This is lower than θ_{SP} and the flat mirror on the backside surface can therefore simply be the natural reflection of the light beam from the air/substrate interface. In applications where the sensor is immersed in water and the water fills the gap, θ_c is close to θ_{SP} and a metallic mirror may be needed on the backside surface of the SCU.

The optical interconnections between the sensor chips and the optical transducers are based on collimated light beams propagating perpendicularly to the planar interfaces between the optical transducer, the gap and the sensor chip. The direction of the light beam will therefore not be changed when passing through the planar interfaces. As a result, the vertical alignments of the SCUs and OTUs are uncritical and the operation of the sensor is insensitive to the magnitude of the refractive index of the gap eliminating the need of index matching gels.

In addition, the combination of using focusing and collimating optics integrated in the sensor chip and large light beam diameters covering a sufficiently large angular band ensures an uncritical alignment in the horizontal direction. The partial reflections from the interfaces, which is $\sim 4\%$ in the case of air/plastic or air/glass, is reduced to $\sim 0.5\%$ by incorporating antireflection coatings on the planar interfaces. Possible antireflection coating materials are MgF_2 and $\text{AlF}_3 \cdot \text{MgF}_2$.

As illustrated by the two configurations of SCUs in Fig. 3, where in a) the SPR angle is $\sim 60^\circ$ and in b) the SPR angle is $\sim 75^\circ$, sensor chips with different ranges of SPR angles can be used for the same optical transducer. The lateral integration of planar sensor chip units and planar optical transducer units provides means of integrating a number of sensing areas (21) on the same sensor chip. Each sensing area (21) typically comprises a polymer membrane with immobilized molecular recognition elements (MREs) responding specifically to a particular analyte. Fabrication methods for

arrays of polymer membranes include ink jet printing techniques and micromachined microdispensers.

- In the configuration as illustrated in Fig. 3, the mirrors (24) and (25) are flat and the width of the light beam impinging on the detector array will be kept unchanged. Since the angle of incidence in this case is larger than 0° and typically between 20° and 45° , the area on the detector array illuminated by the light beam will be larger than the cross sectional area of the light beam. The resolution of the SPR measurement is increased, but the response of the detector array will fall off compared to a configuration without the mirrors (24) and (25) and where the light beam impinges with 0° angle of incidence on the detector array. Since the light intensity from the light source can be sufficiently large, the fall off of the response of the detector array is not considered to be a major problem with the present configuration.
- 15 The resolution of the detector array can be further improved by replacing one or both of the flat mirrors (24) and (25) by a system comprising at least one convex mirror, a convex lens or a diffractive optical element having the function of diverging the light beam passing through the separation plane (17) and increasing the area on the detector array illuminated by the light beam.
- 20 The light source can be a laser diode including a surface emitting laser diode, a light emitting diode (LED) or any other monochromatic light source. Examples are the Hitachi HI-L520RNC light emitting diode emitting at 700 nm, the Toshiba TOLD9221M InGaIP multiple quantum well laser diode emitting at 670 nm, the Mitsubishi ML40123N AlGaAs multiple quantum well laser diode emitting at 780 nm or the Honeywell GaAs vertical cavity surface emitting laser diode SV2637-001 emitting at 850 nm. The lens (15) is an aspheric lens or a lens system, which collimates the light beam emitted from the light source (14). The lenses are made of a transparent material for the light beam, e.g. glass or plastic. The polarizer can be a passive optical component with a fixed direction of polarization or a voltage controlled variable retarder comprising e.g. a liquid crystal or a LiNbO_3 crystal. Light emitted from a laser diode normally has a well defined polarization, but the light from a LED is normally not well defined and a polarizer can be used to optimize the visibility in the SPR response.
- 25
- 30

The choice of the detector array (23) is determined by the size of the sensor and the resolution required. It may consist of multiple photodiode arrays (e.g. a Hamamatsu S3921-128Q, F with an array of 128 pixels), charge coupled device arrays (e.g. a SONY ICX059CL with an array of 795x596 pixels) or a complementary metal oxide semiconductor image sensor (e.g. Vision VV5404 integrated 356x292 pixel monochrome CMOS image sensor).

Fig 4 illustrates two other embodiments of the present invention, each with a SCU and the corresponding OTU separated by a gap. The second embodiment of the invention in Fig.4(a) comprises a SCU as depicted in Fig. 2(c), but with an additional reflective mirror disposed on the backside surface of the SCU, and an OTU where the light source (14) is a white light source (e.g. a white LED lamp from Nichia Chemical Industries, Ltd). The flat mirror (25) according to the first embodiment of the invention has been replaced by a diffraction grating or a holographic grating. The SPR angle is kept constant and the detector array (23) measures the wavelength of light corresponding to wave vector matching of the light and the SP. The grating (25) diffracts the light and images the light on different pixels in the detector array according to the wavelength of light. The RDOEs (18a) and (22a) are now designed to exhibit minimum wavelength dependent deflection angle and they reflect the collimated light beam into a collimated light beam inside the sensor chip unit.

Fig. 4(b) illustrates a third embodiment of the present invention. The third embodiment of the present invention comprises the same components as the first embodiment of the present invention (see Fig. 3), but the plane mirrors (24) and (25) have been omitted, and the third embodiment further comprises a second monochromatic light source (26) mounted in the base plane (31), which radiates a second light beam. The second light beam is collimated by a second lens or second lens system (27), polarized by a second polarizer (28), passes through the transparent separation plane (17) and enters the SCU (10) perpendicularly to the backside surface of the SCU. Alternatively, the first and the second light beam originate from the same monochromatic light source and the lens system is designed in a manner to create a collimated light beam comprising both the first light beam and the second light beam.

Inside the SCU, the second light beam is reflected from a third RDOE (18b) transforming the second light beam into a cylindrically focusing second light beam. Via the flat mirror (19), the second light beam is reflected and focused onto a line on the SPR metal film (20) underneath one or more sensing areas (30). The focused second
5 light beam comprises angular bands covering the SPR angle.

After being reflected from the SPR metal film (20), the second light beam is reflected from the flat mirror (19) and via a fourth RDOE (22b), it is transformed into a collimated second light beam, which exits the SCU (10) perpendicularly to the backside
10 surface of the SCU. The second light beam further reenters the OTU (11) perpendicularly to the transparent separation plane (17) and it is imaged onto the detector array (23).

Fig. 5 illustrates the construction of SPR sensors from the SCUs and OTUs as shown
15 in Fig. 4(b). A schematic top view of one SCU is illustrated in Fig. 5(a) with the four sensing elements (21a), (21b), (30a) and (30b), the metal film (20) and the RDOEs (18a), (18b), (22a) and (22b).

Fig. 5(b) shows a top-view of the corresponding OTU including the transparent separation plane (17), the detector array (23), the component (33) comprises the light
20 sources, the lens systems and the polarizers. Fig. 5(c) and 5(d) illustrate a sensor configuration comprising an array of two SCUs and the corresponding OTUs, and Fig. 5(e) and 5(f) illustrate a sensor configuration comprising an array of four SCUs and the corresponding OTUs.

25

The principle of constructing sensors from SCUs and OTUs can be extended to N units where N is an integer number, which can be as large as desirable. The SCUs and the OTUs can either be arranged in an array aligned in the direction parallel to the RDOEs (the top-down direction in Fig. 5) or by extending the spatial dimension of
30 each component in this direction. The sensor can alternatively be extended combining SCUs and OTUs in the direction perpendicular to the RDOEs (the left-right direction in Fig. 5). When operating the sensor, the sensor chip should be mounted on the top of the optical transducer. A sample comprising the analyte usually being dis-

solved in water is deposited on the top of the sensing areas. This is performed either using a dispenser or incorporating the sensing areas in a flow-injection cell.

The fourth embodiment of the present invention is illustrated in Fig. 6, where the RDOEs (18) and (22) are disposed on the topside surface of the SCU (10) and the SPR sensing layer (21) is disposed on the backside surface of the SCU (10). The SCU is depicted in Fig. 2(b) and the OTU (11) in Fig. 6 is identical to the OTU (11) in Fig. 4 except that the spatial dimensions of the components and the distance between the components are different in the two configurations.

10

In the preferred embodiment of the present invention as illustrated in Fig. 6, a light beam from a monochromatic light source (14) mounted in a base plane (31) is collimated by a lens or a lens system (15), polarized by a polarizer (16), passes through a transparent separation plane (17) and enters the SCU (10) perpendicularly to the backside surface of the SCU. Again, a light shield (8) shields the detector array from stray light emerging from the light source (14) and prevents interference between light emitted from the light source (14) and light reflected from the surface of the detector array (23). Inside the SCU, the light beam is reflected from a RDOE (18) transforming the light beam into a cylindrically focusing light beam that is focused onto a line on a SPR metal film (20) comprising one or more sensing areas (21). The SPR metal film is disposed on the backside surface of the SCU. The focused light beam contains angular bands covering the SPR angle. After being reflected from the SPR metal film (20), the light beam is transformed into a collimated light beam by means of a second RDOE (22). The light beam exits the SCU perpendicularly to the backside surface of the SCU and reenters the OTU perpendicularly to the transparent separation plane (17). A flat mirror (24) mounted in the base plane combined with a flat mirror (25) mounted in the center of the transparent separation plane images the collimated light beam onto a detector array (23). One of the flat mirrors (25) or (24) may be replaced by a convex mirror or a RDOE with the function of diverging the light beam passing through the separation plane (17) and increasing the area on the detector array illuminated by the light beam.

Fig. 7 illustrates the construction of SPR sensors from the SCUs and OTUs as shown in Fig. 6. A schematic top view of one SCU is illustrated in Fig. 7(a) with the two

sensing areas (21a) and (21b), the metal film (20) and the RDOEs (18) and (22). Fig. 7(b) shows a top-view of the corresponding OTU including the transparent separation plane (17), the mirrors (24) and (25), the detector array (23), the component (33) comprising a light source, a lens system and a polarizer. Fig. 7(c) and 7(d) illustrate a sensor configuration comprising an array of two SCUs and the corresponding OTUs, and Fig. 7(e) and 7(f) illustrate a sensor configuration comprising an array of four SCUs and the corresponding OTUs. The principle of constructing sensors from SCUs and OTUs can be extended to N units where N is an integer number, which can be as large as desirable. The SCUs and the OTUs can either be arranged in an array aligned in the direction parallel to the RDOEs (the top-down direction in Fig. 7) or by extending the spatial dimension of each component in this direction. The sensor can alternatively be extended combining SCUs and OTUs in the direction perpendicular to the RDOEs (the left-right direction in Fig. 7). When operating the sensor, the sensor chip should be mounted on the top of the optical transducer. A specific amount of sample comprising the analyte usually being dissolved in water is deposited on the top of the sensing areas. This is performed either using a dispenser or a flow cell mounted in the gap between the array of SCUs and the array of OTUs.

In Fig. 8, a fifth embodiment of the present invention is depicted. It comprises the same components in the SCU and in the OTU as depicted in Fig. 4, but the first light source and the second light source are now disposed symmetrically in relation to the sensing layers. In addition, the SCU comprises a plane mirror (40) on the topside surface and the OTU comprises the plane mirrors (24), (25) and (29) which serve to direct the first light beam and the second light beam towards the detector array (23). A light beam from a monochromatic light source (14) mounted in a base plane (31) is collimated by a lens or a lens system (15), polarized by a polarizer (16), passes through a transparent separation plane (17) and enters the SCU (10) perpendicularly to the backside surface of the SCU. Again, a light shield (8) shields the detector array from stray light emerging from the light source (14) and prevents interference between light emitted from the light source (14) and light reflected from the surface of the detector array (23). Inside the SCU, the light beam is reflected from a RDOE (18a) transforming the light beam into a cylindrically focusing light beam. Via a flat mirror (19) disposed on the backside surface of the SCU, the light beam is reflected and focused onto a line on a SPR metal film (20) underneath one or more sensing ar-

5 eas (21). The focused light beam comprises angular bands covering the SPR angle. After being reflected from the SPR metal film (20), the light beam is further reflected three times or more from alternating the flat mirror (19) and a flat mirror (40) disposed on the topside of the SCU. Via a second RDOE (22a), the light beam is transformed into a collimated light beam again, which exits the SCU perpendicularly to the backside surface of the SCU and reenters the OTU perpendicularly to the transparent separation plane (17). A mirror (24) mounted in the base plane combined with a mirror (25) mounted in the center of the transparent separation plane images the collimated light beam onto a detector array (23).

10

The fifth embodiment of the invention as illustrated in Fig. 8 further comprises a second monochromatic light source (26) mounted in the base plane (31) that radiates a second light beam collimated by a second lens or lens system (27), polarized by a second polarizer (28), passing through the transparent separation plane (17) and entering the SCU (10) perpendicularly to the backside surface of the SCU. A second light shield (9) shields the detector array from stray light emerging from the light source (26) and prevents interference between light emitted from the light source (26) and light reflected from the surface of the detector array (23).

20 Inside the SCU, the second light beam is reflected from a third RDOE (22b) transforming the second light beam into a cylindrically focusing second light beam. Via the flat mirror (19), the light beam is reflected and focused onto a line on the SPR metal film (20) underneath one or more sensing areas (21). The focused second light beam comprises angular bands covering the SPR angle.

25

After being reflected from the SPR metal film (20), the second light beam is further reflected three times or more from alternating the flat mirror (19) and the flat mirror (40). Via a fourth RDOE (18b), it is transformed into a collimated second light beam again, which exits the SCU perpendicularly to the backside surface of the SCU and reenters the OTU (11) perpendicularly to the transparent separation plane (17). A second flat mirror (29) mounted in the base plane (31) combined with the flat mirror (25) images the collimated second light beam onto the detector array (23). In an alternative embodiment of the present invention, one or both of the flat mirrors (24) and (29) or the flat mirror (25) are replaced by a system comprising at least one con-

30

vex mirror, a convex lens or a diffractive optical element . As a result, the light beams passing through the separation plane (17) will be diverged causing an increase in the area on the detector array illuminated by the light beam. Regarding the fifth embodiment of the present invention as illustrated in Fig. 8, the sensor chips and optical transducers are constructed from SCUs and OTUs in a similar manner as the embodiment of the invention illustrated in Figs. 4(b) and 5.

Before exiting the SCU, the light beams in the configuration depicted in Fig. 8 are reflected at a larger number of surfaces and travels a longer path length than the light beam in the configuration depicted in Fig. 4(b). Since the light beam entering the sensor chip in Fig. 8 is reflected twice before impinging on the SPR film and it is reflected four times after being reflected from the SPR film, the width of the beam is enlarged by a factor of 2. For the same pixel size of the detector array, a larger beam diameter implies that a better resolution can be obtained in the detector array, but at the expense of a larger SCU and OTU. Extending the length of the region between the sensing areas (21) and (30) and thereby incorporating more reflections between the plane mirrors (19) and (40), the width of the light beam w at the output of the SCU can be increased according to: $w = (k + 1)w_0/2$. In this expression, w_0 is the width of the light beam entering the SCU and k is the number of reflections for the light beam from the mirrors (19) and (40). The reflections are counted from the first reflection after the reflection from the SPR metal film and prior to the reflection from the RDOE, which is (22b) for the first light beam and (18b) for the second light beam. For the configuration in Fig. 4(b), $k = 1$ and $w = w_0$ and for the configuration in Fig. 8, $k = 3$ and $w = 2w_0$.

25

Figs. 9(a) and (b) illustrate a design example of a RDOE as employed in the present invention with two modes of operation. In mode 1 [see (18a) in Fig. 3(a)], the RDOE reflects a collimated and perpendicularly incident light beam at angular bands covering the SPR angle (θ_{SP}). In mode 2 [see (22a) in Fig. 3(a)], the RDOE reflects a light beam diverging from the SPR metal film and converts it into a collimated light beam exiting the SCU perpendicularly to the backside surface of the SCU.

30

The dimensions of the RDOE are depicted in Fig. 9(a), where D is an aperture D , a_p is a grating distance and α_p is a grating angle for the p 'th grating element. The corre-

sponding transformation of the incident collimated light rays to light rays converging to a focal point is illustrated in Fig. 9(b) for the case of mode 1. The design of the RDOE for the case of mode 2 is the mirror image of the design in Fig. 9(a) in a plane parallel to the plane of incidence and positioned at the focal point. Fig. 9(c) illustrates
 5 another design example of a RDOE as employed in the embodiment of the invention as depicted in Fig. 4(a), where collimated light rays are reflected to light rays collimated at one side of the RDOE.

Figs. 10(a), (b) and (c) illustrate an alternative design example of a RDOE, where D is
 10 an aperture, a_p is a grating distance, $\alpha_p = \theta/2$ is a grating angle and $\beta_p = 90^\circ - \theta$ is a second grating angle for the p'th grating element. The function of this grating is the same as in Fig. 9, but the configuration employs a second grating angle rather than vertical grating walls.

15 The RDOEs can be made using various processing techniques in transparent materials for the wavelength of light like polymers (e.g. polycarbonate, polystyrene, polyetherimide or polyurethane resin), glass (e.g. SF2, SF5, SF11 or sapphire) or silicon and combining them with metal evaporation or sputtering. Plastic usually exhibits bi-refr
 20 mode of the surface plasmon by means of a polarizer. The possible processing techniques includes one-level gray-tone lithography, diamond turning, photolithographic binary optics, e-beam writing, laser micromechanical etching, and analogue or digital holographic writing in photoresist. The processing techniques can be employed either directly in processing the sensor chip or in the fabrication of a mould for the sensor
 25 chip.

The metal film on the top of the RDOEs can be gold, silver, aluminum, titanium or the like. A metal layer thickness of about 200 nm (or greater) generally provides sufficient reflectivity, and a metal thickness in excess of 100 nm generally will not support
 30 an SP wave.

The SPR metal film thickness is typically ~ 50 nm. Gold or silver will be used for the wavelength range 400-1000 nm. In the infrared, materials like aluminum, copper and tantalum may also be employed. The thickness and compositions of the SPR metal

films and the RDOE metal films are different. The fabrication of these films can be accomplished using masks (e.g. metal masks or photolithographic masks) during evaporation or sputtering of the metals.

- 5 In Figs. 9(b) and 10(b), the angular bands of θ for the light coupling to the SP vary from θ_{\min} to θ_{\max} . The corresponding grating angle for the p 'th grating element is $\alpha_p = \theta/2$, where $p = 0$ is the first element and $p = N$ is the last element in the grating. Assuming that the grating periodicity is much larger than the wavelength of light, the grating period can be estimated from the following formula based on the diffraction
- 10 condition that rays diffracted from each p grating element interfere constructively;

$$a_p = \frac{m\lambda}{n_g L_p} 2h \left[1 + \left(\frac{L_p}{2h} \right)^2 \right]^{1/2} \quad (3)$$

- 15 where λ is the wavelength of light, m is the diffraction order, L_p and $2h$ are the horizontal and vertical distances between the focal point of the grating and the position of the p 'th grating element, respectively [see Figs. 9(b) and 10(b)].

- As an example, assuming that the beam width is $w = 2$ mm with $L_{p=0} = 8$ mm and
- 20 $L_{p=N} = 6$ mm, $h = 2$ mm, $\lambda/n_g = 0.5$ μm and $m=10$, then $a_0 = 5.6$ μm and $a_N = 6.0$ μm . For the case of Fig. 9, the depth of the grating $d_p \sim 3$ μm , whilst $d_p \sim 1.4$ μm for the case of Fig. 10. In the present example, the grating period $a_p \sim 6$ μm is much larger than the wavelength of light $\lambda/n_g \sim 0.5$ μm . It is also possible to employ gratings where the grating period is comparable to or much smaller than the wave-
- 25 length of light.

- The incident light beam is collimated in Fig. 9(b) and each diffraction element of the RDOE images the light on the same focal point. If D is sufficiently broader than w , a lateral displacement of the sensor chip relative to the optical transducer results in a
- 30 change of the angle θ for coupling to the SP waves. This fact can be utilized to make a coarse adjustment of θ for the embodiments of the present invention as depicted in Figs. 2 and 6. The lateral displacement (see arrows in Figs. 2 and 6) can be per-

formed by means of manual or motorized micrometer drives. It implies that a SCU can be used to cover a broad range of SPR angles and a large dynamic range in refractive index. As an alternative to focusing a light beam on the SPR metal film at angular bands covering the SPR angle, the lateral displacement may also be utilized in scanning the angle of incidence of a light beam on the SPR metal film. In this configuration, w of the light beam should be less than $1/20$ of D . In alternative configurations, the RDOEs can be designed as an array of elements, where each element as illustrated in Fig. 9(b) focuses an incident collimated light beam to a focal point on the SPR metal film at angular bands covering the SPR angle. As a result, a lateral displacement of the sensor chip relative to the optical transducer causes a corresponding lateral movement of the focal point incident on the SPR metal film. Employing this method, the sensing areas can be disposed in a two-dimensional array. The sensor chips can be mounted on a rotatory disc and the lateral displacement (see arrows in Figs. 3 and 6) can be performed by means of a motor of the type used in compact disc players.

Depending on parameters including the metal film thickness, the angular bands covered by the SPR has typically a full width half maximum (FWHM) in the reflectivity vs. angular spectrum of $\Delta\theta \sim 1^\circ\text{-}3^\circ$. In order to obtain a narrow SPR signal, the optimum thickness of the SPR metal film is determined empirically for a specific sensor and it is typically in the range 30-50nm. It is determined by the complex dielectric function of the metal $\epsilon_m = \epsilon_{mr} + i\epsilon_{mi}$, where according to the Drude formula:

$$\epsilon_{mr} = 1 - \frac{\lambda^2 \lambda_c^2}{\lambda_p^2 (\lambda_c^2 - \lambda^2)}; \epsilon_{mi} = \frac{\lambda^2 \lambda_c^2}{\lambda_p^2 (\lambda_c^2 - \lambda^2)}; \quad (4)$$

25

where ϵ_{mr} and ϵ_{mi} are the real part and imaginary part of the dielectric function, respectively, λ_p is the plasma wavelength and λ_c is the collision wavelength.

As an example, employing gold as the SPR metal film, we obtain from Eq. (4); $\epsilon_{mr} = -20.7$ and $\epsilon_{mi} = 1.89$. Since $|\epsilon_{mi}| \ll |\epsilon_{mr}|$, the following expression can be used in the calculation of θ_{SP} :

30

$$n_g \sin \theta_{sp} \cong \left[\frac{\epsilon_{mr} n_s^2}{\epsilon_{mr} + n_s^2} \right]^{1/2} \quad (5)$$

where n_s is the refractive index of the sample to be measured (i.e. the sensing areas) and n_g is the refractive index of the sensor chip.

5

As an example, assuming that the sensing areas are based on MREs immobilized in a polymer membrane with $n_s \sim 1.46$ and the sensor chip is made of a high refractive index plastic ($n_g \sim 1.66$), the SPR angle becomes according to Eq. (5); $\theta_{sp} \sim 68^\circ$. As observed from Eq. (5), θ_{sp} depends strongly on the refractive index of the sensor chip material and the membrane. Usually, θ_{sp} is in the angular range 50° - 80° . The value of θ_{sp} can be lowered to the critical angle for total reflection between the substrate and the sensing area employing a few hundreds nanometers thick intermediate layer of a dielectric with a refractive index lower than n_g and disposed in between the substrate and the metal layer. The dielectric layer results in the excitation of a long-
10 range SP with a narrower $\Delta\theta$, but with a broader lateral spatial extension of approximately $300 \mu\text{m}$ compared to $10 \mu\text{m}$ for a normal (short range) SP. Possible materials for the intermediate layer are MgF_2 , CaF_2 , AlF_3 , BaF_2 and $\text{Na}_5\text{Al}_3\text{F}_{14}$.
15

Since the RDOEs focus a light beam onto a line on the SPR metal layer, two or more
20 sensing areas can be illuminated. For example, if the light beam width is 1 mm and each sensing area has a diameter of $200 \mu\text{m}$ with a spacing of $50 \mu\text{m}$, a sensing area with 4 elements is illuminated by one light beam. One of the sensing areas acts as a reference, which is responsive to unspecific changes due to effects from temperature, pressure, ageing, analyte refractive index, membrane swelling and other distur-
25 bances in the environment. The other sensing areas on the top of the SPR metal film can be based on MREs immobilized in membranes with a thickness $\sim 0.3 \mu\text{m}$ - $1 \mu\text{m}$ deposited on the top the SPR metal layer. The possible membrane compounds include hydrogel, for example, polysaccharide such as, e.g. agarose, dextran, carrageenan, alginic acid, starch, cellulose or derivatives thereof such as, for example,
30 carboxymethyl derivatives or an organic polymer such as e.g. poly(vinylalcohol), poly(vinylchloride), polyacrylic acid, polyacrylamide and polyethylene glycol.

The MREs are for example ionophores and chromoionophores either immobilized via hydrophobic forces in a lipophilic polymer membrane or copolymerized in the polymer membrane. An ionophore acts as a selective recognition element for a particular ionic or neutral ionogenic chemical compound (i.e. the analyte). In order to maintain electrical neutrality inside the polymer membrane phase, the binding of the analyte by the ionophore is coupled with the coextraction or ion exchange of a second ionic species (usually a proton) giving rise to a change in the absorption coefficient ($\Delta\alpha$) of the chromoionophore. The corresponding change in the refractive index (Δn) of the membrane as given by the Kramers-Kronig transform causes a change in the SPR signal through n_s in Eq. (5). When the operating wavelength is about 100 nm longer than the position of the maximum $\Delta\alpha$, a large and wavelength insensitive Δn can be achieved at a small $\Delta\alpha$. Operating close to the maximum in $\Delta\alpha$ results in a more sensitive SPR response where information of both $\Delta\alpha$ and Δn can be determined from the response. For a typical chromoionophore like ETH 5294, maximum in $\Delta\alpha$ occurs in the wavelength range 500 to 700 nm. A suitable wavelength of light is then 670-850 nm, where a number of commercial semiconductor lasers and light emitting diodes provide light emission.

Other possible MREs are antibodies/antigens and the present SPR sensor could be employed as a label-free immunosensor based on antibody/antigen reactions to determine specific analytes. Antibodies can readily be immobilized in a hydrogel through covalent binding. The Biosensor group from BIAcore has used antibodies immobilized in a carboxymethyl-dextran hydrogel membrane on the gold film of a SPR sensor for detecting various biological compounds. An alternative to antibody/antigen reactions is the utilization of molecular imprinting techniques, where synthetic polymers possess selective molecular recognition properties. This is due to the self-assembled or preorganized positioning of functional groups which generate recognition sites within a polymer membrane that are complementary to the shape and the functional groups of the analyte. A second alternative is the use of oligonucleotide ligands, which may provide specific and high affinity binding with specific analytes.

Another application of the present invention is in the DNA hybridization analysis. On sensor-chips, large arrays of oligonucleotides or probes originating from cDNA libraries can be fabricated employing for example light directed synthesis or high-speed

robotic printing techniques. Depending on applications, such arrays constitute from a few tenth of probes to $\sim 10^6$ probes /cm².

Traditionally, the detection scheme is performed by use of fluorescent labeling and
5 detecting the hybridization pattern of target DNA using a scanning confocal optical microscope. According to the present invention, the hybridization reaction of a large number of sensing areas (in this case the probe areas) can be detected monitoring the shift in the SPR curve for each sensing area.

CLAIMS

1. A surface plasmon resonance sensor comprising a first unit and a second unit, said first and second units being separable, and wherein said first unit comprises:

5

- a first housing,

- a film of electrically conducting material being adapted to support surface plasmons, said film being held by a first exterior surface part of the first housing,

10

- optical input means positioned on a second exterior surface part of the first housing so as to receive an optical light beam from the second unit,

15

- optical output means positioned on a third exterior surface part of the first housing so as to transmit an optical light beam to the second unit,

- a first set of optical elements being adapted to direct the received optical light beam from the first unit towards the electrically conducting film,

20

- a second set of optical elements being adapted to direct an optical light beam from the electrically conducting film towards the optical output means so as to transmit the optical light beam from the electrically conducting film to the second unit,

25 and wherein said second unit comprises:

- a second housing,

- means for emitting an optical light beam,

30

- a first set of optical elements being adapted to prepare the emitted optical light beam,

- optical output means positioned on a first exterior surface part of the second housing so as to transmit the prepared optical light beam to the first unit,
- optical input means positioned on a second exterior surface part of the second housing so as to receive an optical light beam from the first unit,
- detecting means being adapted to detect the optical light beam received from the first unit,
- a second set of optical elements being adapted to direct the received optical light beam from the first unit towards the detecting means,

wherein the propagation directions of the optical light beams at the positions of the optical input and optical output means are essentially perpendicular to the exterior surface parts of the first and the second housing so as to avoid refraction of the optical light beams upon entry of said optical light beams into the first and second unit.

2. A surface plasmon resonance sensor according to claim 1, wherein the emitting means comprises a laser source, such as a semiconductor laser diode.
3. A surface plasmon resonance sensor according to claim 1, wherein the emitting means comprises a light source emitting light at essentially a single wavelength.
4. A surface plasmon resonance sensor according to claim 1, wherein the emitting means comprises a light source emitting light at a plurality of wavelengths, such as a light emitting diode.
5. A surface plasmon resonance sensor according to any of the preceding claims, wherein the first set of optical elements of the second unit comprises means for collimating the emitted optical light beam.
6. A surface plasmon resonance sensor according to claim 5, wherein the first set of optical elements of the second unit further comprises means for polarizing the emitted optical light beam.

7. A surface plasmon resonance sensor according to any of the preceding claims, wherein the input and output means of the first and second units comprise antireflecting coatings.
- 5 8. A surface plasmon resonance sensor according to any of the preceding claims, wherein the detecting means comprises an array of photosensitive elements, such as a multiple photo detector array, a charge coupled device or a complementary metal oxide semiconductor image sensor.
- 10 9. A surface plasmon resonance sensor according to any of the preceding claims further comprising a light shield member.
10. A surface plasmon resonance sensor according to any of the preceding claims, wherein the first set of optical elements of the first unit comprises a diffractive
15 member, such as a diffractive grating or a holographic grating, said diffractive member being adapted to transform a collimated optical light beam into a focused optical light beam.
11. A surface plasmon resonance sensor according to any of the preceding claims,
20 wherein the second set of optical elements of the first unit comprises a diffractive member, such as a diffractive grating or a holographic grating, said diffractive member being adapted to transform a diverging optical light beam into a collimated optical light beam.
- 25 12. A surface plasmon resonance sensor according to any of claims 1-9, wherein the first set of optical elements of the first unit comprises a reflective member, such as a diffractive grating or a holographic grating, said reflective member being adapted to transform a collimated optical light beam into a focused optical light beam.
- 30 13. A surface plasmon resonance sensor according to any of claims 1-9, wherein the second set of optical elements of the first unit comprises a reflective member, such as a diffractive grating or a holographic grating, said reflective member being adapted to transform a diverging optical light beam into a collimated optical light beam.

14. A surface plasmon resonance sensor according to any of claims 1-9, wherein the second set of optical elements comprises a reflective member, such as a reflective mirror.

5 15. A surface plasmon resonance sensor according to any of the preceding claims, wherein the electrically conducting film is a metal film, such as a gold film, a silver film, an aluminum film or a titanium film.

16. A surface plasmon resonance sensor according to claim 15, wherein the electri-
10 cally conducting film comprises a plurality of electrically conducting films, said plurality of films being arranged in a laterally extending pattern.

17. A surface plasmon resonance sensor according to any of claims 1-15 further comprising a layer of dielectric material being positioned between the electrically
15 conducting film and the first exterior surface part of the first housing.

18. A surface plasmon resonance sensor according to claim 16 further comprising a layer of dielectric material being positioned between each of the plurality of electri-
cally conducting films and the first exterior surface part of the first housing.

20

19. A surface plasmon resonance sensor according to any of the preceding claims further comprising moving means, said moving means being adapted to move the first and second unit relative to each other so as to move the focus point of an optical light beam relative to an electrically conducting film.

25

20. A surface plasmon resonance sensor according to any of claims 1-18 further comprising moving means, said moving means being adapted to move the first and second unit relative to each other so as to vary the angle of incidence of an optical light beam directed towards an electrically conducting film.

30

21. A surface plasmon resonance sensor comprising in combination two or more surface plasmon resonance sensors according to claims 1-20, said combination of two or more surface plasmon resonance sensors being arranged in a lateral extending pattern.

22. A method of determining the bio-/chemical composition of a sample using a surface plasmon resonance sensor, said surface plasmon resonance sensor comprising a first unit and a second unit, said first and second units being separable, and wherein said first unit comprises:

5

- a first housing,

- a film of electrically conducting material being adapted to support surface plasmons, said film being held by a first exterior surface part of the first housing,

10

- optical input means positioned on a second exterior surface part of the first housing so as to receive an optical light beam from the second unit,

- optical output means positioned on a third exterior surface part of the first housing so as to transmit an optical light beam to the second unit,

15

- a first set of optical elements being adapted to direct the received optical light beam from the first unit towards the electrically conducting film,

20

- a second set of optical elements being adapted to direct an optical light beam from the electrically conducting film towards the optical output means so as to transmit the optical light beam from the electrically conducting film to the second unit,

25 and wherein said second unit comprises:

- a second housing,

- means for emitting an optical light beam,

30

- a first set of optical elements being adapted to prepare the emitted optical light beam,

- optical output means positioned on a first exterior surface part of the second housing so as to transmit the prepared optical light beam to the first unit,

- optical input means positioned on a second exterior surface part of the second housing so as to receive an optical light beam from the first unit,
 - detecting means being adapted to detect the optical light beam received from the first unit,
 - a second set of optical elements being adapted to direct the received optical light beam from the first unit towards the detecting means,
- 10 wherein the propagation directions of the optical light beams at the positions of the optical input and optical output means are essentially perpendicular to the exterior surface parts of the first and the second housing so as to avoid refraction of the optical light beams upon entry of said optical light beams into the first and second unit.
- 15 23. A surface plasmon resonance sensor comprising a first unit, said first unit comprising:
- a first housing,
 - a layer of electrically conducting material being adapted to support surface plasmons, said layer being held by a first exterior surface part of the first housing,
 - optical input means positioned on a second exterior surface part of the first housing, said optical input means being adapted to receive an optical light beam,
 - optical output means positioned on a third exterior surface part of the first housing, said optical output means being adapted to transmit an optical light beam,
 - a first diffractive optical element being adapted to direct the received optical light beam towards the electrically conducting layer,

- a second diffractive optical element being adapted to direct a reflected optical light beam from the electrically conducting layer towards the optical output means,

5 wherein the propagation directions of the optical light beams at the positions of the optical input and optical output means are essentially perpendicular to the exterior surface parts of the first housing so as to avoid refraction of the optical light beams at the positions of the optical input and optical output means.

10 24. A surface plasmon resonance sensor according to claim 23 further comprising a second unit, said second unit comprising:

- a second housing,

15 - means for emitting an optical light beam,

- a set of optical elements being adapted to prepare the emitted optical light beam,

20 - optical output means positioned on a first exterior surface part of the second housing, said optical output means being adapted to transmit the prepared optical light beam to the first unit,

25 - optical input means positioned on a second exterior surface part of the second housing, said optical input means being adapted to receive an optical light beam from the first unit,

- detecting means being adapted to detect the received optical light beam from the first unit,

30 wherein the propagation directions of the optical light beams at the positions of the optical input and optical output means are essentially perpendicular to the exterior surface parts of the second housing so as to avoid refraction of the optical light beams at the positions of the optical input and optical output means.

25. A surface plasmon resonance sensor according to claim 24, wherein the second unit further comprises an optical element being adapted to direct the received optical light beam from the first unit towards the detecting means.
- 5 26. A surface plasmon resonance sensor according to claims 24-25, wherein the light emitting means comprises a laser source, such as a semiconductor laser diode.
27. A surface plasmon resonance sensor according to any of claims 24-26, wherein the light emitting means comprises a light source emitting light at essentially a single
10 wavelength.
28. A surface plasmon resonance sensor according to claims 24-25, wherein the light emitting means comprises a light source emitting light at a plurality of wave-
lengths, such as a light emitting diode.
15
29. A surface plasmon resonance sensor according to any of claims 24-28, wherein the set of optical elements of the second unit comprises means for collimating the emitted optical light beam.
- 20 30. A surface plasmon resonance sensor according to claim 29, wherein the set of optical elements of the second unit further comprises means for polarizing the emitted optical light beam.
31. A surface plasmon resonance sensor according to any of claims 23-30, wherein
25 the input and output means of the first and second units comprise antireflecting coatings.
32. A surface plasmon resonance sensor according to any of claims 24-31, wherein the detecting means comprises an array of photosensitive elements, such as a multi-
30 ple photo detector array, a charge coupled device or a complementary metal oxide semiconductor image sensor.

33. A surface plasmon resonance sensor according to any of claims 23-32, wherein the first and second diffractive optical element of the first unit comprises an optical grating, such as a reflective holographic grating.

5 34. A surface plasmon resonance sensor according to any of claims 23-33, wherein the electrically conducting film is a metal film, such as a gold film, a silver film, an aluminum film or a titanium film.

35. A surface plasmon resonance sensor according to claim 34, wherein the electri-
10 cally conducting film comprises a plurality of electrically conducting films, said plurality of films being arranged in a laterally extending pattern.

36. A surface plasmon resonance sensor according to any of claims 23-35 further comprising a layer of dielectric material positioned between the electrically conduct-
15 ing film and the first exterior surface part of the first housing.

37. A surface plasmon resonance sensor according to claim 35 further comprising a layer of dielectric material positioned between each of the plurality of electrically conducting films and the first exterior surface part of the first housing.

20

38. A surface plasmon resonance sensor according to any of claims 23-37 further comprising moving means, said moving means being adapted to move the first and second unit relative to each other so as to move the focus point of the an optical light beam relative to one or more of the electrically conducting films.

25

39. A surface plasmon resonance sensor according to any of claims 23-37 further comprising moving means, said moving means being adapted to move the first and second unit relative to each other so as to vary the angle of incidence of an optical light beam directed towards to one or more of the electrically conducting films.

40. A surface plasmon resonance sensor comprising:

- a transparent member,
- 5 - a layer of electrically conducting material being adapted to support surface plasmons, said layer being held by an exterior surface part of the member,
- a first optical grating being held by a first exterior surface part of the member and being adapted to direct a received optical light beam towards the electrically
10 conducting layer, wherein the propagation direction of the received optical light beam at the position of the first optical grating is essentially perpendicular to the first exterior surface part of the member and wherein the received optical light beam is substantially collimated, and
- 15 - a second optical grating being held by a second exterior surface part of the member and being adapted to receive an optical light beam from the electrically conducting layer and being adapted to re-emit the optical light beam received from the electrically conducting layer, wherein the propagation direction of the re-emitted optical light beam at the position of the second optical grating is essen-
20 tially perpendicular to the second exterior surface part of the member and wherein the re-emitted optical light beam is substantially collimated.

41. A surface plasmon resonance sensor according to claim 40 further comprising

- 25 - means for emitting an optical light beam,
- a set of optical elements being adapted to prepare the emitted optical light beam, and
- 30 - means for detecting the re-emitted optical light beam.

42. A surface plasmon resonance sensor according to claim 41 further comprising an optical element being adapted to direct the re-emitted optical light beam towards the detecting means.

43. A surface plasmon resonance sensor according to claims 41-42, wherein the light emitting means comprises a laser source, such as a semiconductor laser diode.

44. A surface plasmon resonance sensor according to any of claims 41-43, wherein
5 the light emitting means comprises a light source emitting light at essentially a single wavelength.

45. A surface plasmon resonance sensor according to claims 41-42, wherein the light emitting means comprises a light source emitting light at a plurality of wave-
10 lengths, such as a light emitting diode.

46. A surface plasmon resonance sensor according to any of claims 41-45, wherein the set of optical elements comprises means for collimating the emitted optical light beam.
15

47. A surface plasmon resonance sensor according to claim 46, wherein the set of optical elements further comprises means for polarizing the emitted optical light beam.

20 48. A surface plasmon resonance sensor according to any of claims 41-47, wherein the detecting means comprises an array of photosensitive elements, such as a multiple photo detector array, a charge coupled device or a complementary metal oxide semiconductor image sensor.

25 49. A surface plasmon resonance sensor according to any of claims 40-48, wherein the electrically conducting film is a metal film, such as a gold film, a silver film, an aluminum film or a titanium film.

1/10

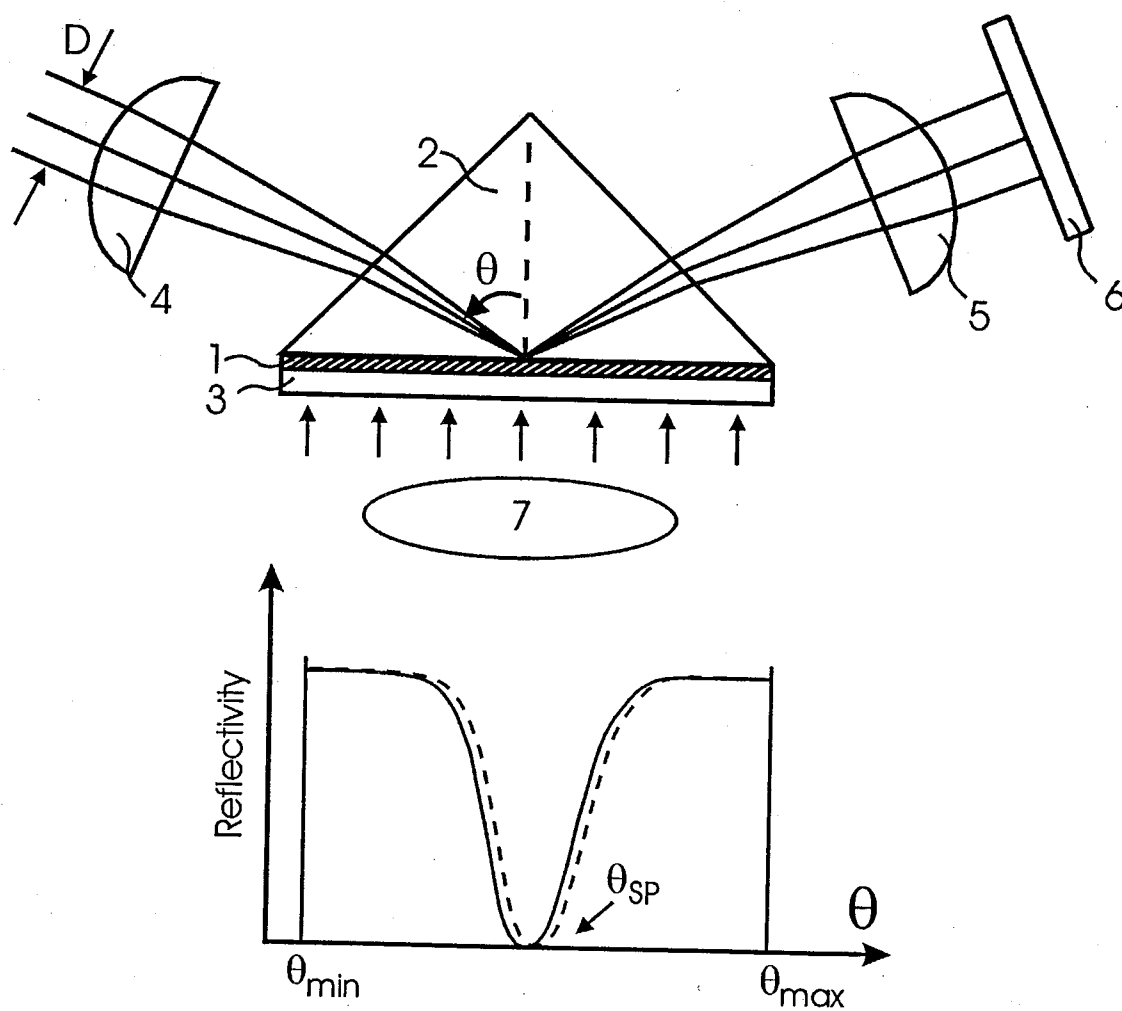


Fig. 1

2/10

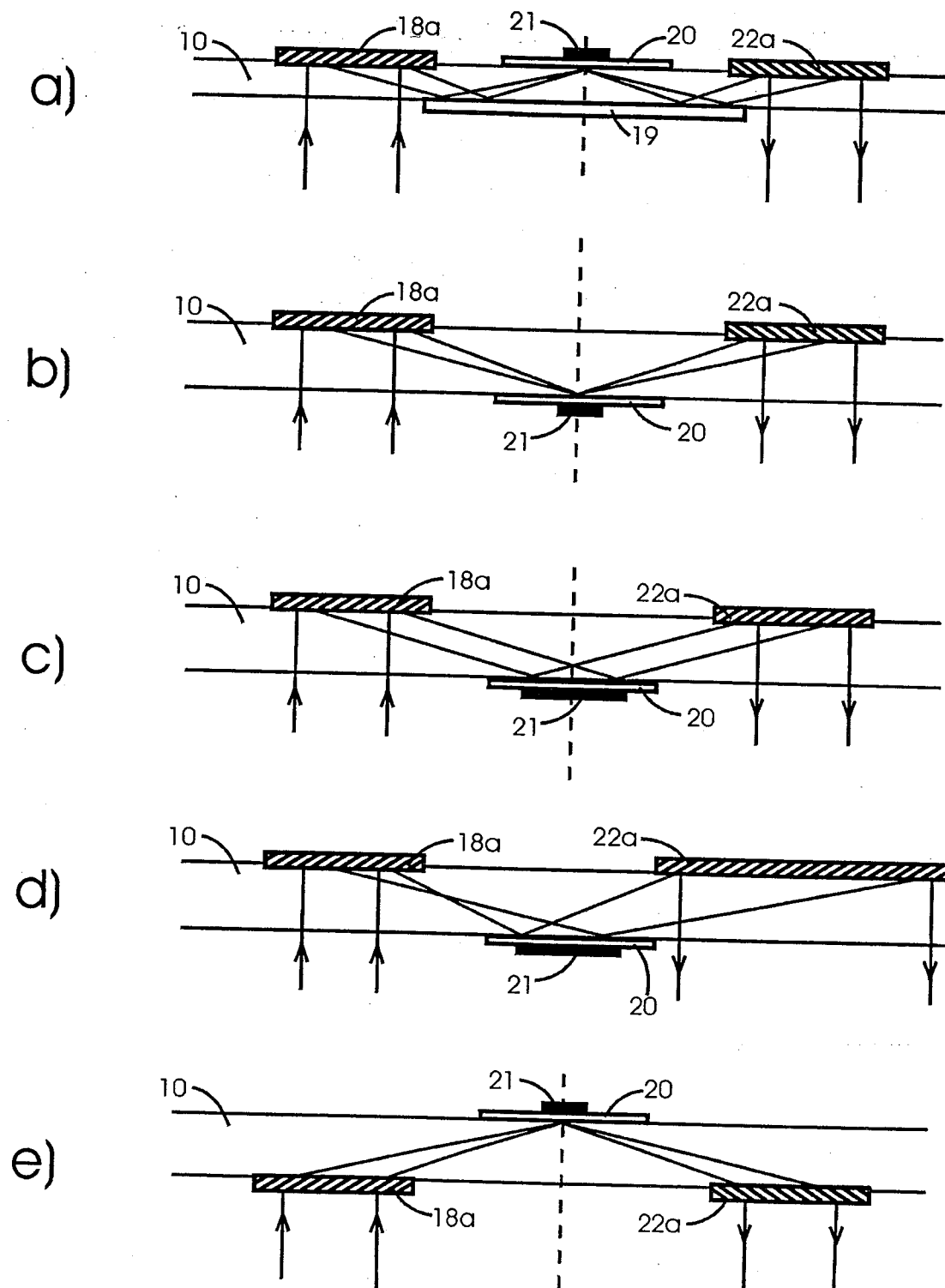


Fig. 2

3/10

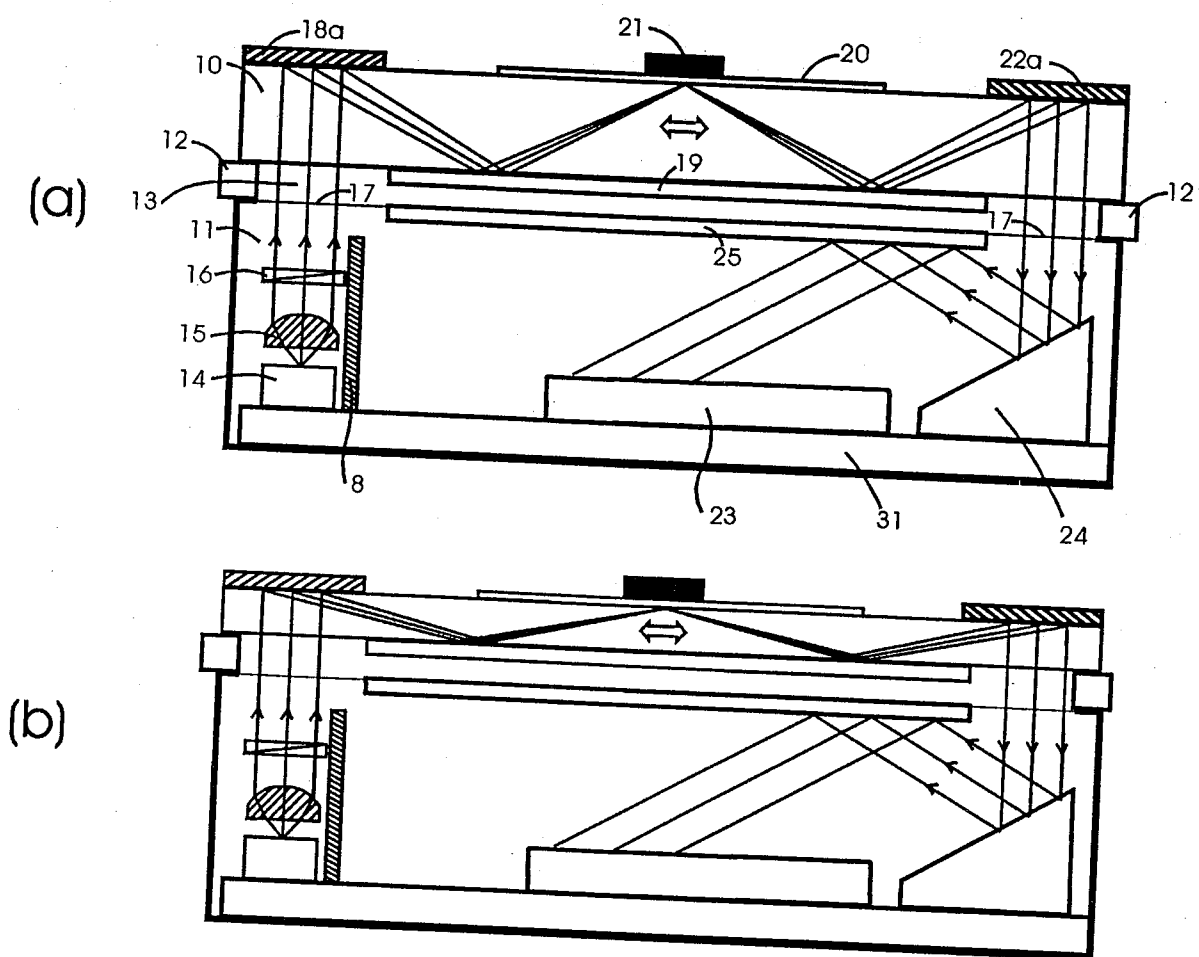


Fig. 3

4/10

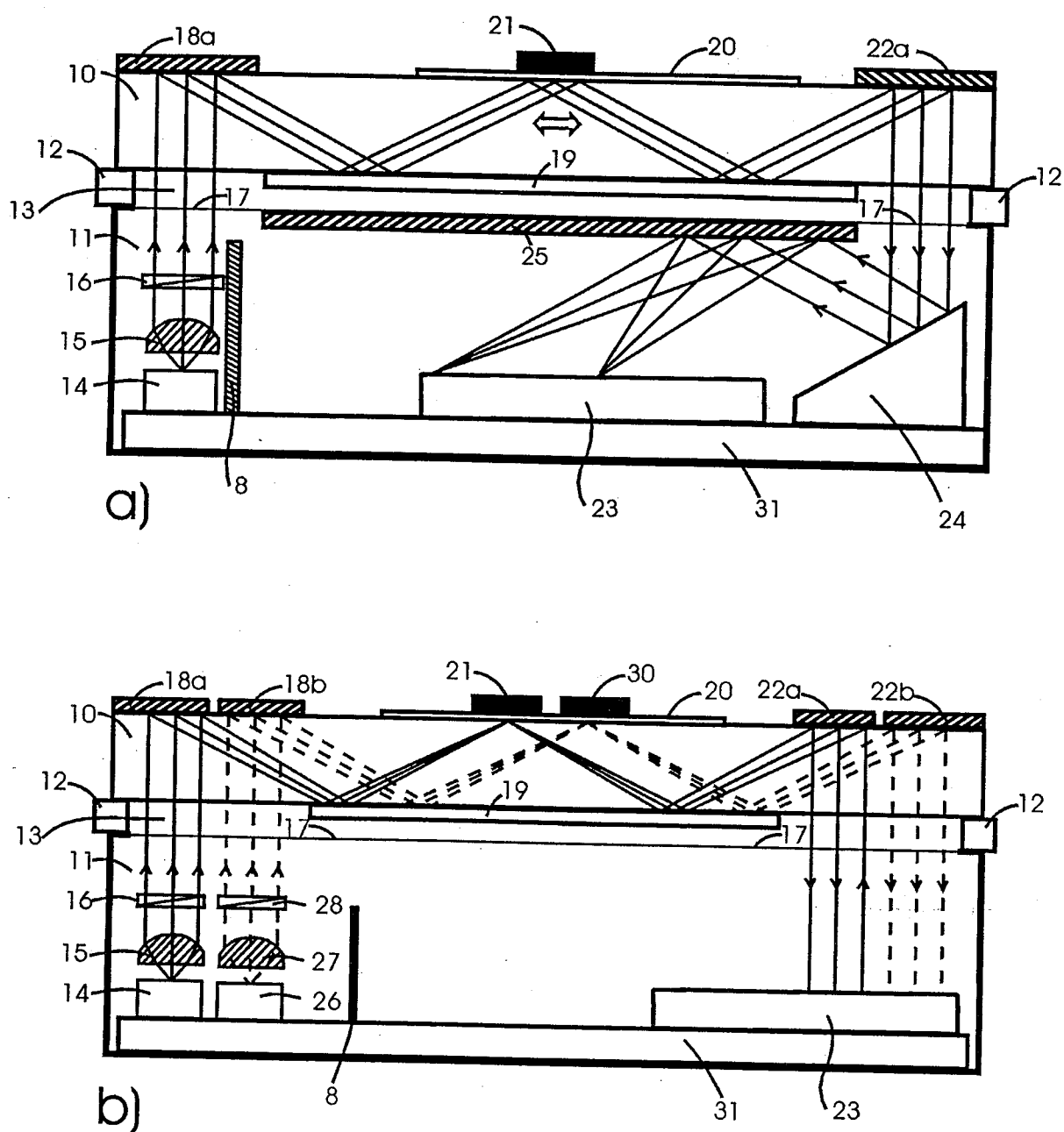


Fig. 4

5/10

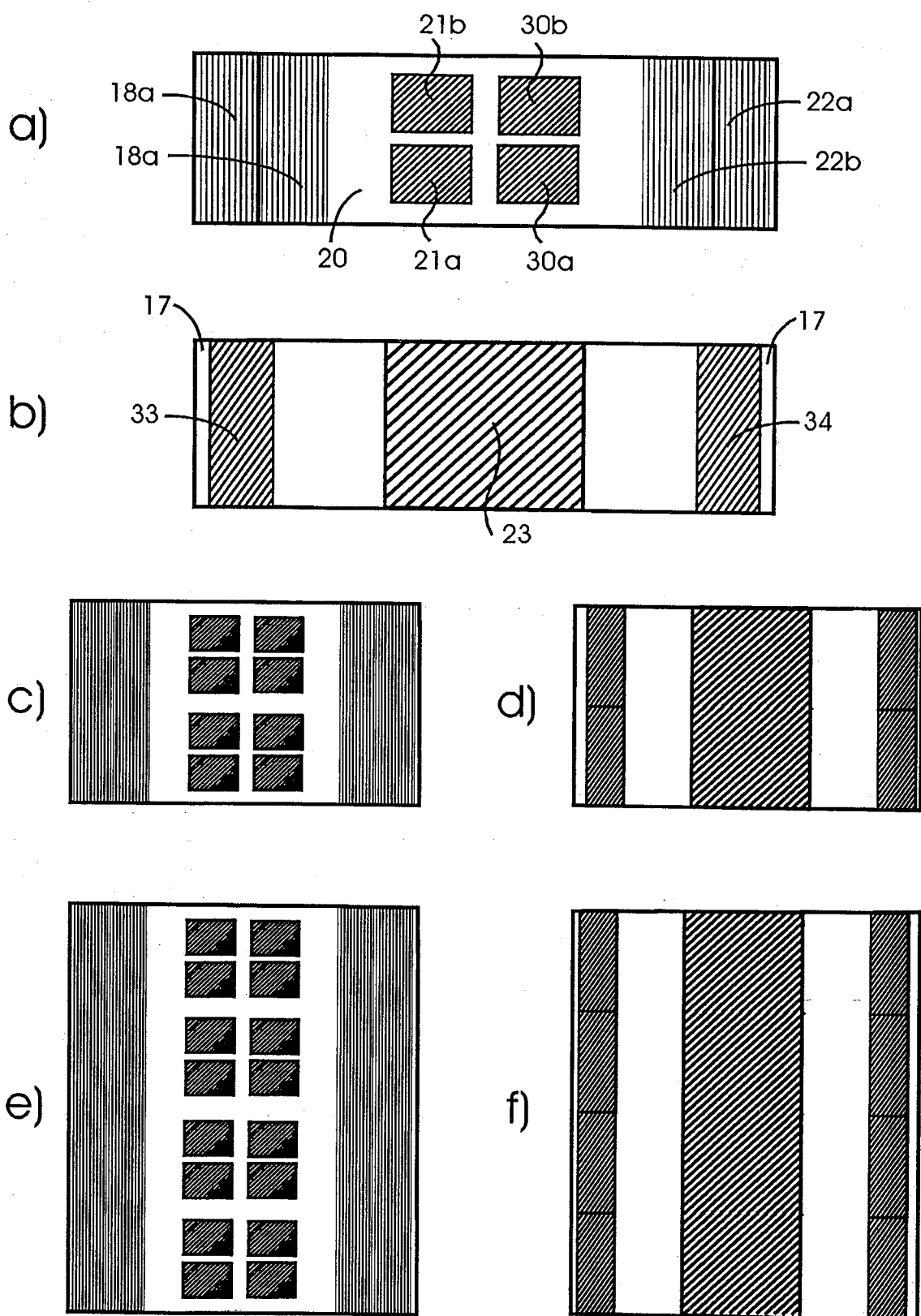


Fig. 5

6/10

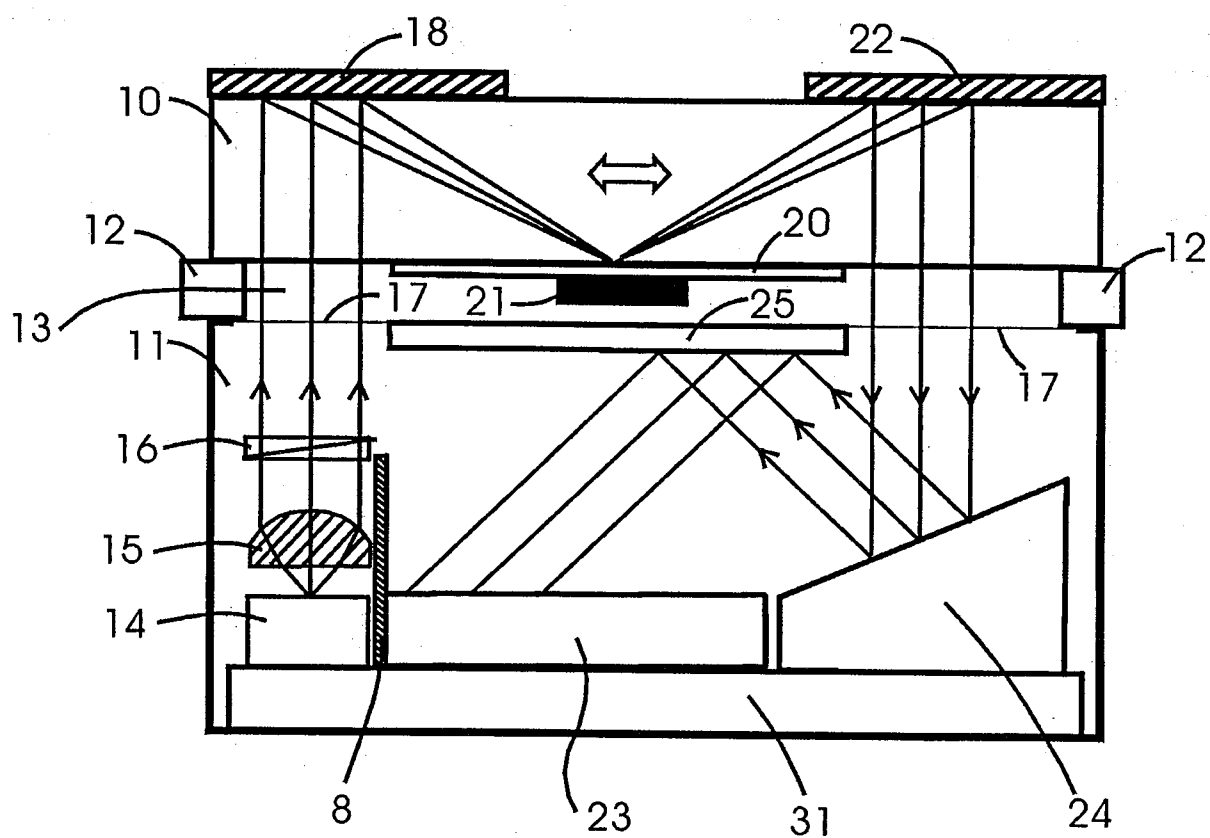


Fig. 6

7/10

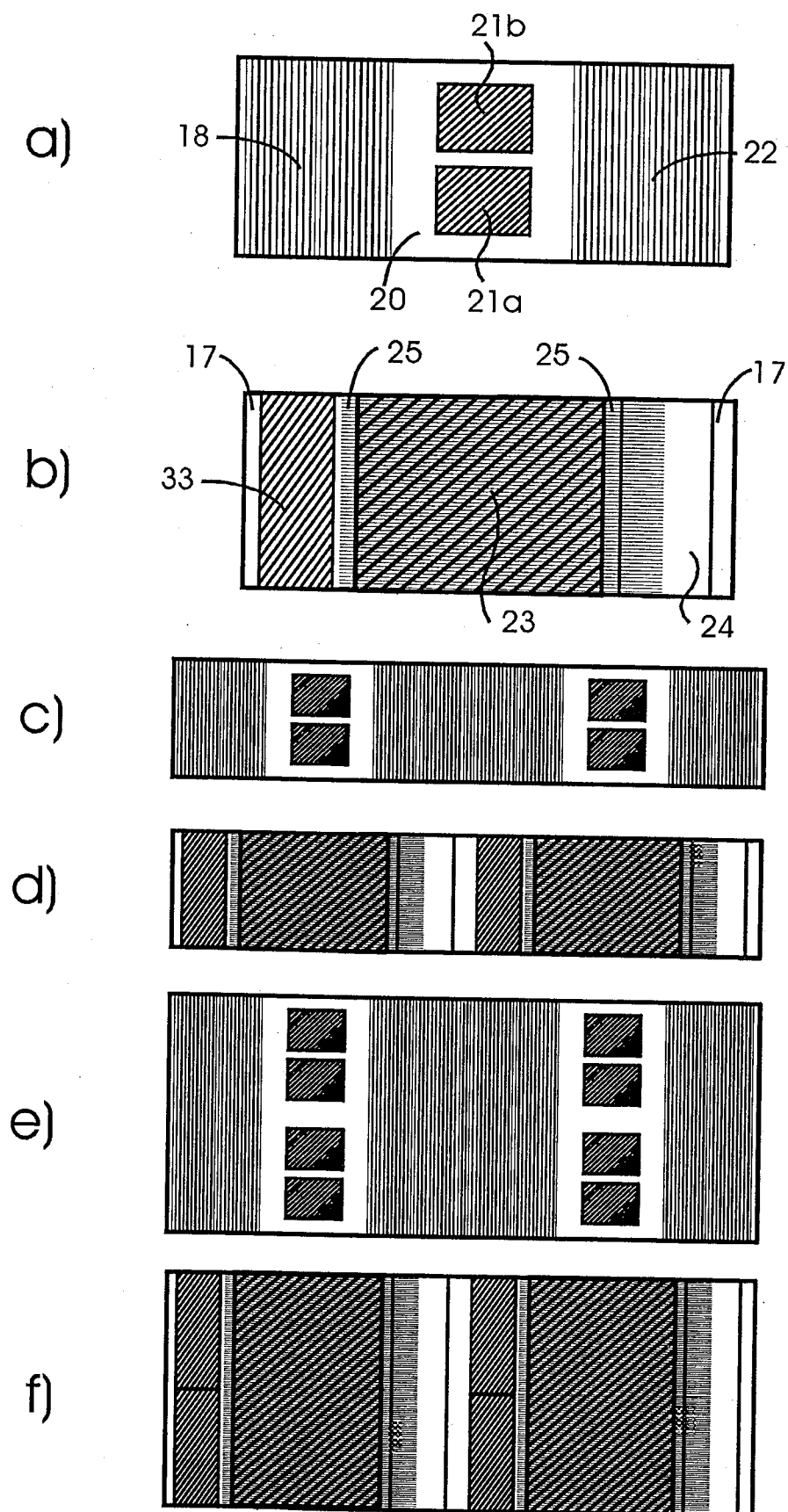


Fig. 7

8/10

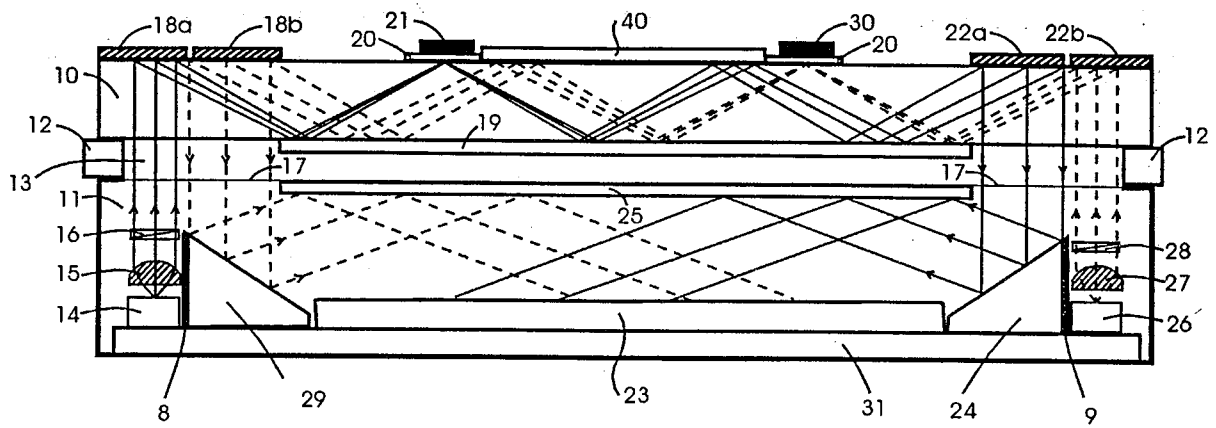
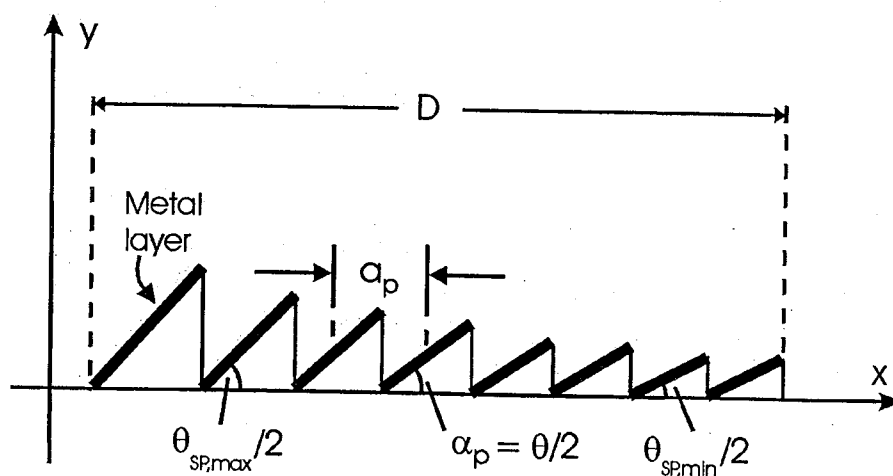
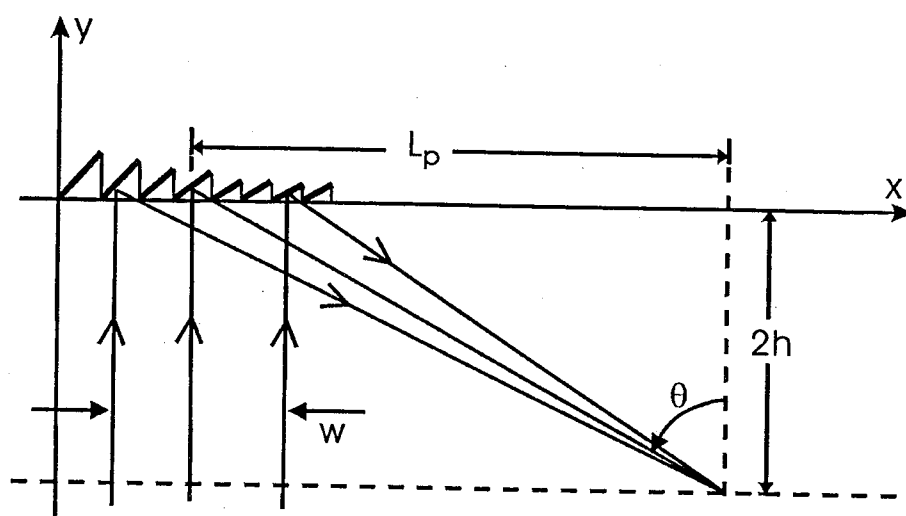


Fig. 8

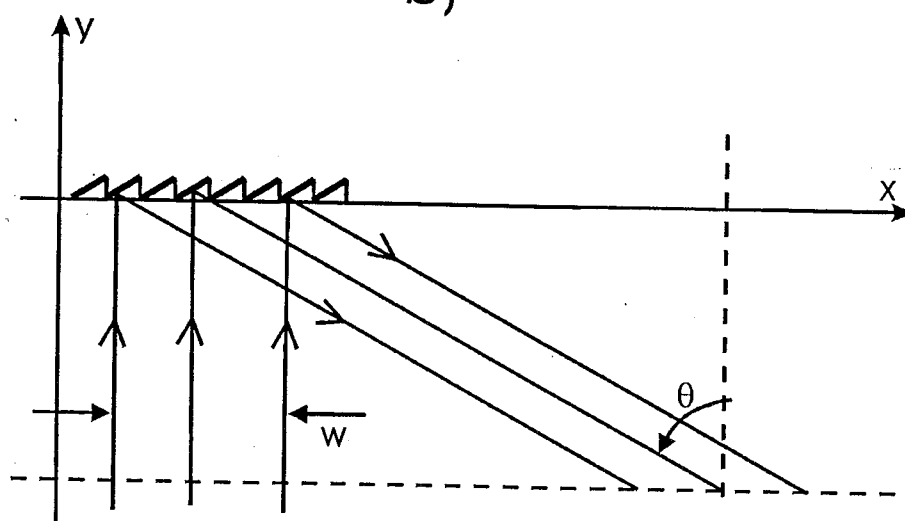
9/10



a)



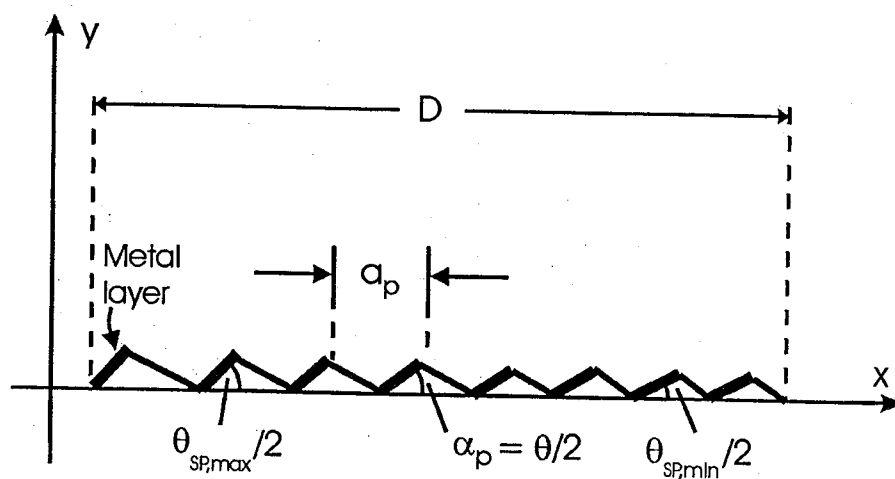
b)



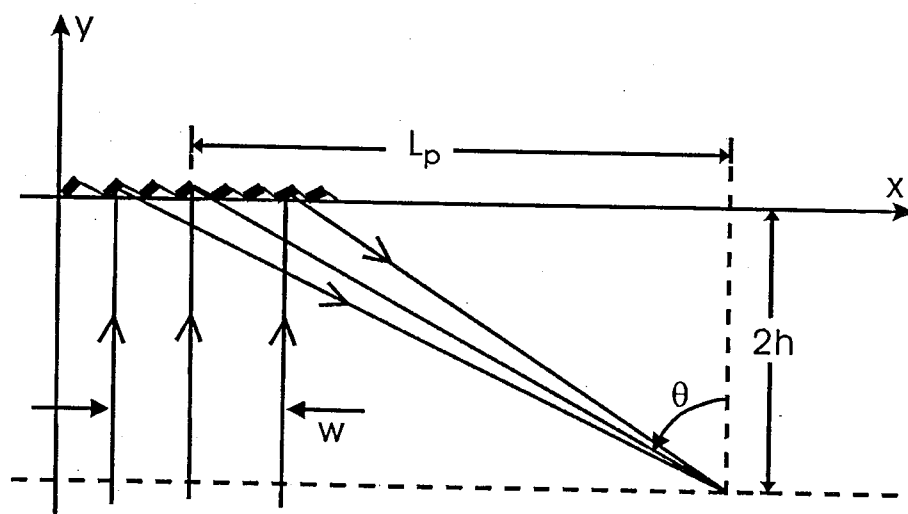
c)

Fig. 9

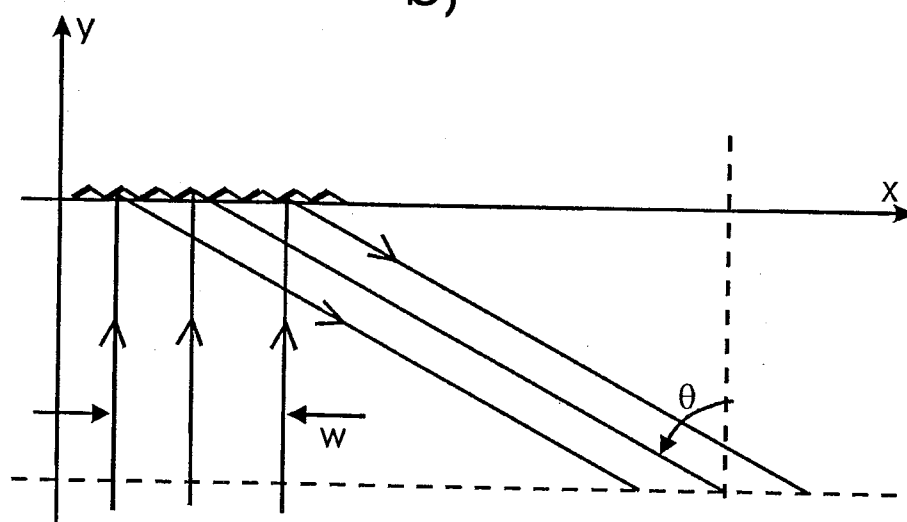
10/10



a)



b)



c)

Fig. 10

INTERNATIONAL SEARCH REPORT

International Application No

PCT/DK 00/00036

A. CLASSIFICATION OF SUBJECT MATTER

IPC 7 G01N21/55

According to International Patent Classification (IPC) or to both national classification and IPC

B. FIELDS SEARCHED

Minimum documentation searched (classification system followed by classification symbols)

IPC 7 G01N

Documentation searched other than minimum documentation to the extent that such documents are included in the fields searched

Electronic data base consulted during the international search (name of data base and, where practical, search terms used)

C. DOCUMENTS CONSIDERED TO BE RELEVANT

Category *	Citation of document, with indication, where appropriate, of the relevant passages	Relevant to claim No.
Y	<p>EP 0 797 091 A (TEXAS INSTRUMENTS) 24 September 1997 (1997-09-24) cited in the application</p> <p>abstract column 3, line 3 - line 7 column 3, line 31 - line 44 column 4, line 29 - line 52 figures 1,2</p> <p style="text-align: center;">---</p> <p style="text-align: center;">-/--</p>	<p>1-6, 8, 14-16, 21, 22, 24-30, 32-35, 42-49</p>

☒ Further documents are listed in the continuation of box C.

☒ Patent family members are listed in annex.

* Special categories of cited documents :

- *A* document defining the general state of the art which is not considered to be of particular relevance
- *E* earlier document but published on or after the international filing date
- *L* document which may throw doubts on priority claim(s) or which is cited to establish the publication date of another citation or other special reason (as specified)
- *O* document referring to an oral disclosure, use, exhibition or other means
- *P* document published prior to the international filing date but later than the priority date claimed

- *T* later document published after the international filing date or priority date and not in conflict with the application but cited to understand the principle or theory underlying the invention
- *X* document of particular relevance; the claimed invention cannot be considered novel or cannot be considered to involve an inventive step when the document is taken alone
- *Y* document of particular relevance; the claimed invention cannot be considered to involve an inventive step when the document is combined with one or more other such documents, such combination being obvious to a person skilled in the art.
- *G* document member of the same patent family

Date of the actual completion of the international search

26 April 2000

Date of mailing of the international search report

03/05/2000

Name and mailing address of the ISA

European Patent Office, P.B. 5818 Patentlaan 2
NL - 2280 HV Rijswijk
Tel. (+31-70) 340-2040, Tx. 31 651 epo nl,
Fax: (+31-70) 340-3016

Authorized officer

Thomas, R.M.

INTERNATIONAL SEARCH REPORT

Intern. Application No

PCT/DK 00/00036

C.(Continuation) DOCUMENTS CONSIDERED TO BE RELEVANT

Category °	Citation of document, with indication, where appropriate, of the relevant passages	Relevant to claim No.
Y	US 5 822 073 A (YEE) 13 October 1998 (1998-10-13)	1-6, 8, 14-16, 21, 22, 24-30, 32-35, 42-49
X	abstract * column 15, line 26 - column 16, line 21 *	23, 40, 41
A	column 16, line 40 - line 52 column 20, paragraph 1 * column 26, line 22 - column 28, line 24 *	10-13
A	figures 11-16 ----- EP 0 863 395 A (FUJI PHOTO FILM) 9 September 1998 (1998-09-09)	1, 10-13, 19, 20, 22, 23, 38-40
A	column 24, line 48 - column 25, line 6 column 28, line 35 - line 48 figure 16 ----- WO 90 05295 A (PHARMACIA) 17 May 1990 (1990-05-17) page 15, last paragraph - page 17, line 15; figures 1, 2 -----	1, 22-24, 40, 41

INTERNATIONAL SEARCH REPORT

Information on patent family members

Intern. Application No

PCT/DK 00/00036

Patent document cited in search report		Publication date	Patent family member(s)	Publication date
EP 0797091	A	24-09-1997	JP 10038800 A	13-02-1998
US 5822073	A	13-10-1998	AU 7475996 A	15-05-1997
			AU 7598996 A	15-05-1997
			WO 9715819 A	01-05-1997
			WO 9715821 A	01-05-1997
			US 5991048 A	23-11-1999
			US 5815278 A	29-09-1998
EP 0863395	A	09-09-1998	JP 10239233 A	11-09-1998
			JP 10281982 A	23-10-1998
			JP 11051857 A	26-02-1999
			US 5923031 A	13-07-1999
WO 9005295	A	17-05-1990	SE 462408 B	18-06-1990
			AT 181423 T	15-07-1999
			AT 100197 T	15-01-1994
			DE 68912343 D	24-02-1994
			DE 68912343 T	05-05-1994
			DE 68929019 D	22-07-1999
			DE 68929019 T	07-10-1999
			EP 0534941 A	07-04-1993
			EP 0442921 A	28-08-1991
			JP 4504765 T	20-08-1992
			JP 4501462 T	12-03-1992
			SE 8804075 A	10-11-1988
			WO 9005317 A	17-05-1990
			US 5164589 A	17-11-1992
			US 5313264 A	17-05-1994