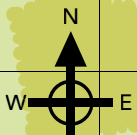


KEY TO SYMBOLS

	Accommodation		Crossings		Pedestrianised Areas		Shopping on campus
	Bar		Information totem		Parcel Collection Point		Sustrans cycle route
	Bus Stop		Male, female, disabled		Parking (P&D Machine or Flexi Pay)		Taxi rank
	Café		Male, female, disabled (inc. baby change)		Restaurant		Vehicle access
	Changing places		One way systems		Shopping centre		Water courses
	Construction zones						



Grid squares are approx. 4 minutes walk

LOCATIONS

Advanced Manufacturing and Materials Centre (AMMC) G6	G6
Ardlen	J5/I5
Argent Court	J7/I7
Avon	J6
Bus Interchange	F5
Café Westwood	J6
Centre for Life Long Learning	K5
Chaplaincy	F5
Chemistry (Sciences)	G5
Claycroft Activity Zone	H7
Clinical Trials Unit	C8
Computer Science	H6
Counselling Services (Senate House)	F6
Cryfield Sports Pavilion	D4
Degree Apprenticeship Centre	H6
Economics (Social Sciences)	F5
Education	J6
Energy Innovation Centre	J6
Engineering (Sciences)	G5
Engineering Management Building (EMB)	I5
Games Hall	I4/5
Gatehouse	G4
Grad Deck	F4
Health Centre	E6/7
Humanities	G5/6
Institute House	J6
Int'l Digital Laboratory (IDL)	G6/H6
Int'l Institute for Nanocomposites Manufacturing (IINM)	H6
Int'l Institute for Product and Service Innovation (IIPSI)	H6
Int'l Manufacturing Centre (IMC)	G5/6 - H5/6
IT Services	K6
Law School (Social Sciences)	F5/6 - G5/6
Library	C8/D8
Life Sciences	G5
Medical School	C8
Medical Teaching Centre	C8
Millburn House	I5
Modern Record Centre and BP Archives (Library)	F5/6
Music Centre	J6
Physics (Sciences)	G5
Phytophology	G6/7
Postroom	H5
Rampal	F5/G5
Rootes	E5/6
Rootes Grocery Store (Students' Union)	E6/F6
Scarman	G3/4
Schmitt	J6
Sciences	G5
Senate House	F5/6
Social Sciences	F5
Sports and Wellness Hub	E3
Students Union	E5/F5
Tennis Centre	J4
The Beehive	I1
The State	F4
University House	H4/5 - I4/5
Venture Centre	H6/7
Warwick Arts Centre	F5/6
Warwick Business School (WBS)	F4/5 - G4/5
Warwick Print	K6
WBS Teaching Centre	F5
Wellbeing Support Services (Senate House)	F6
Westwood House	J5 - K5/6
Westwood Teaching and Lecture Theatre	J6/K6
WMG Academy	J3
Zeeman	H6

Sherbourne 1-6 8.20am

Lakeside (all blocks) 8.30am

Sherbourne 7-9 8.20am

Heronbank West 8.30am

Heronbank North & East 8.40am

Rootes (all blocks), Benefactors & Whitefields (all) 8.50am

Jack Martin 1-4 8.45am

Tocil (all blocks) 8.30am

Arthur Vick 1-3 8.35am

Bluebell 3-4 8.45am

Cryfield (all blocks) 8.45am

Bluebell 1-2 8.45am

ACCOMMODATION KEY

Arthur Vick Residences	F7
Benefactors	E5
Bluebell Residences	D6/E6-7
Claycroft Residences	G7/H7
Cryfield Village	E4-5
Cryfield Cottages	E4/F4
Heronbank Residences	E3/F3-4
Heronbank Apartments	F3-4
International House	E6
Jack Martin Residences	F6-7/E7
Lakeside Residences	F2-3
Lakeside Apartments	G3
Maths Houses	D9
Rootes Residences	D5/E5-6
Sherbourne Residences	F2/G2
Tocil Residences	F7/G7
Westwood Residences	J5/K5
Whitefields Residences	E6/F6

GIBBET HILL CAMPUS

KEY TO SYMBOLS

- Accommodation
- Bus Stop
- Construction zones
- Crossings
- Information totem
- One way systems
- Pedestrianised Areas
- Parent Collection Point
- Parking (P&D Machine or Free/Pay)
- Sustrans cycle route
- Taxi rank
- Vehicle access
- Water courses



CENTRAL CAMPUS

CRYFIELD VILLAGE

LAKESIDE VILLAGE

WESTWOOD CAMPUS

GIBBET HILL CAMPUS

Cryfield Sports Pavilion

Sports and Wellness Hub

Windmill Hill

Zeeman

IMC

Humanities

Library

Social Sciences

Senate House

Warwick Arts Centre

Health Centre

Students' Union

Roccas

Ramphal

Scarman

WBS

Radcliffe

WBS Teaching Centre

The Slate

Leghfield Road

Gibbet Hill Road

University Road

Windmill Hill

Cryfield Sports Pavilion

Sports and Wellness Hub