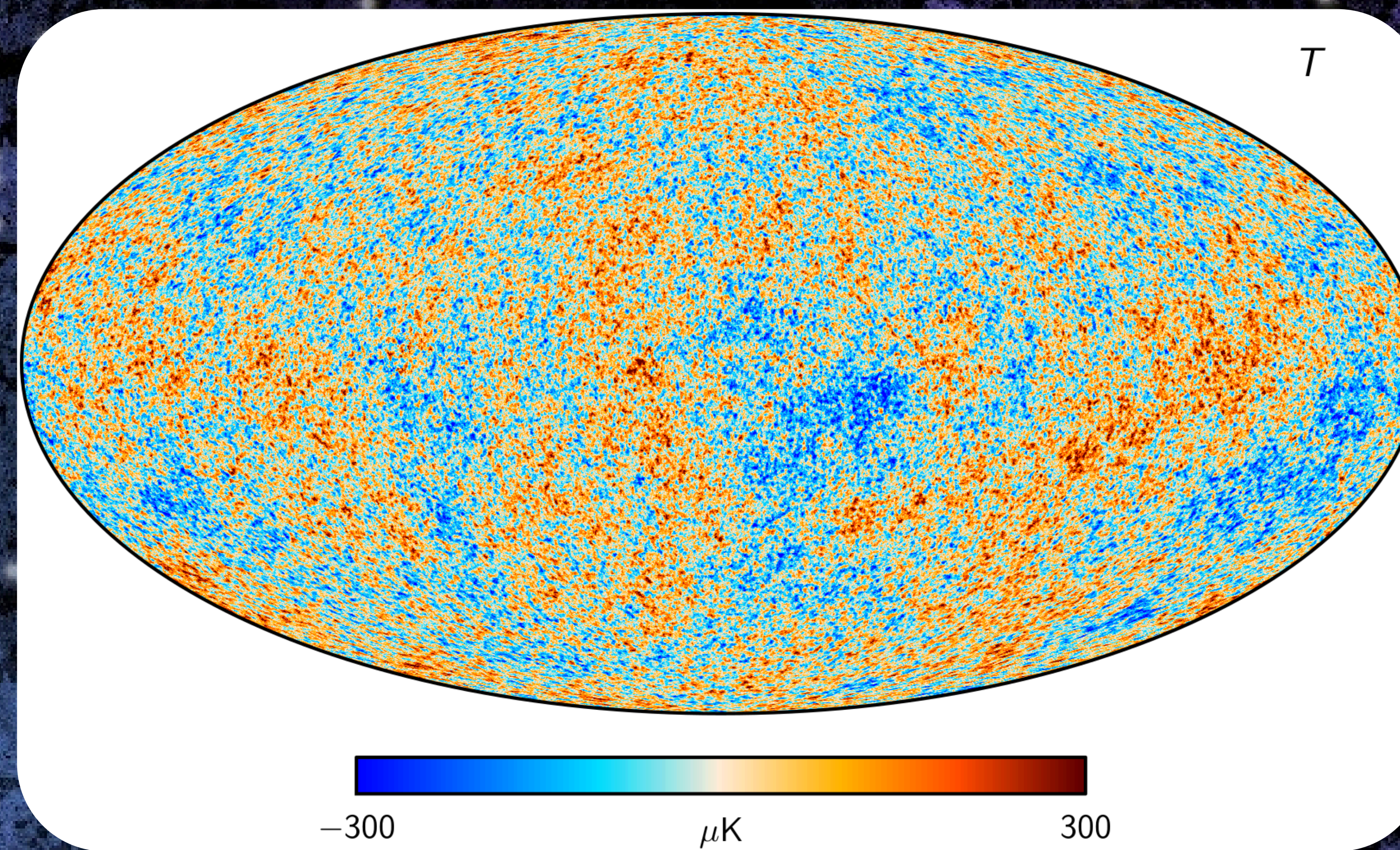


Building a Model of the Universe

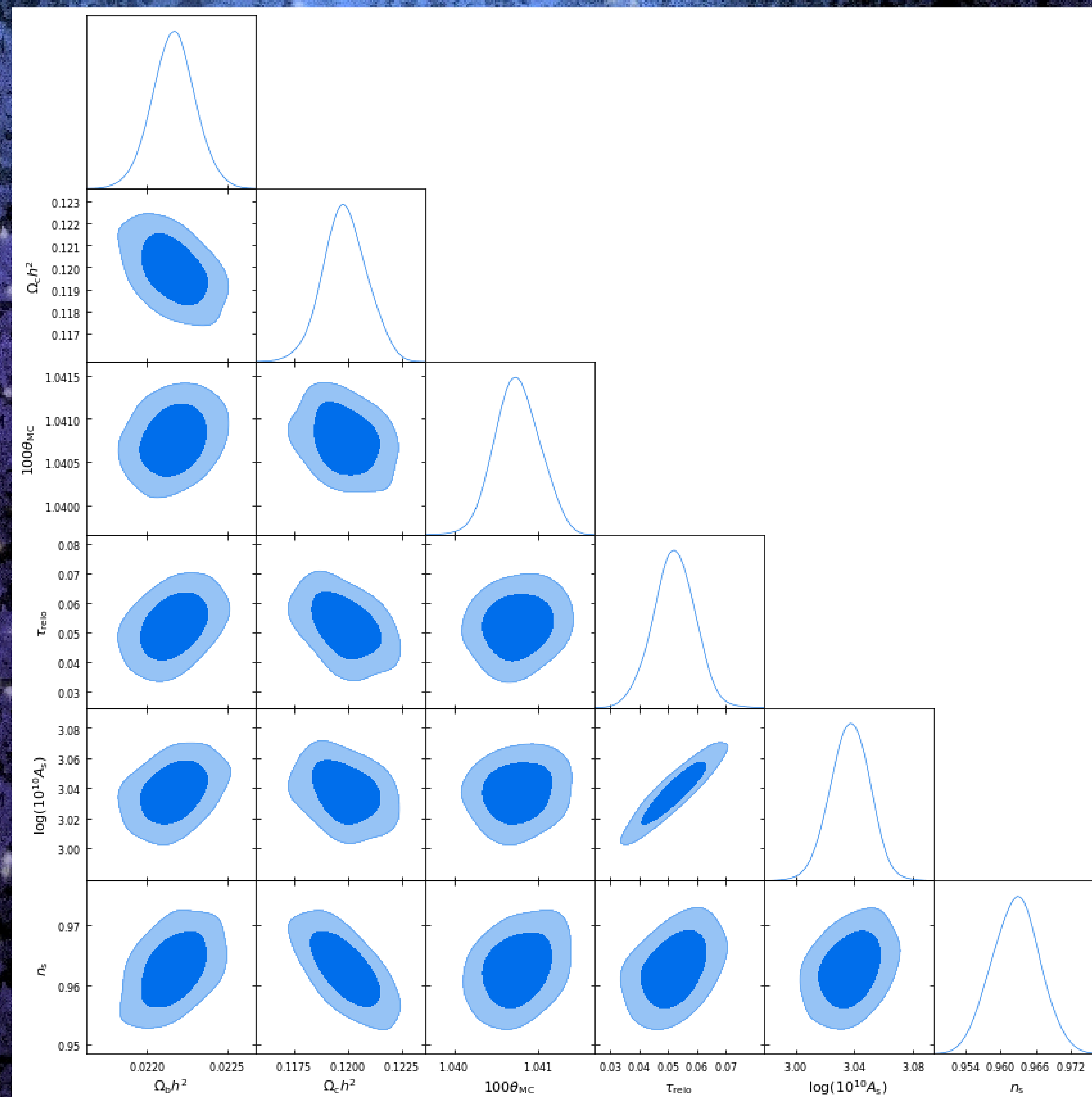
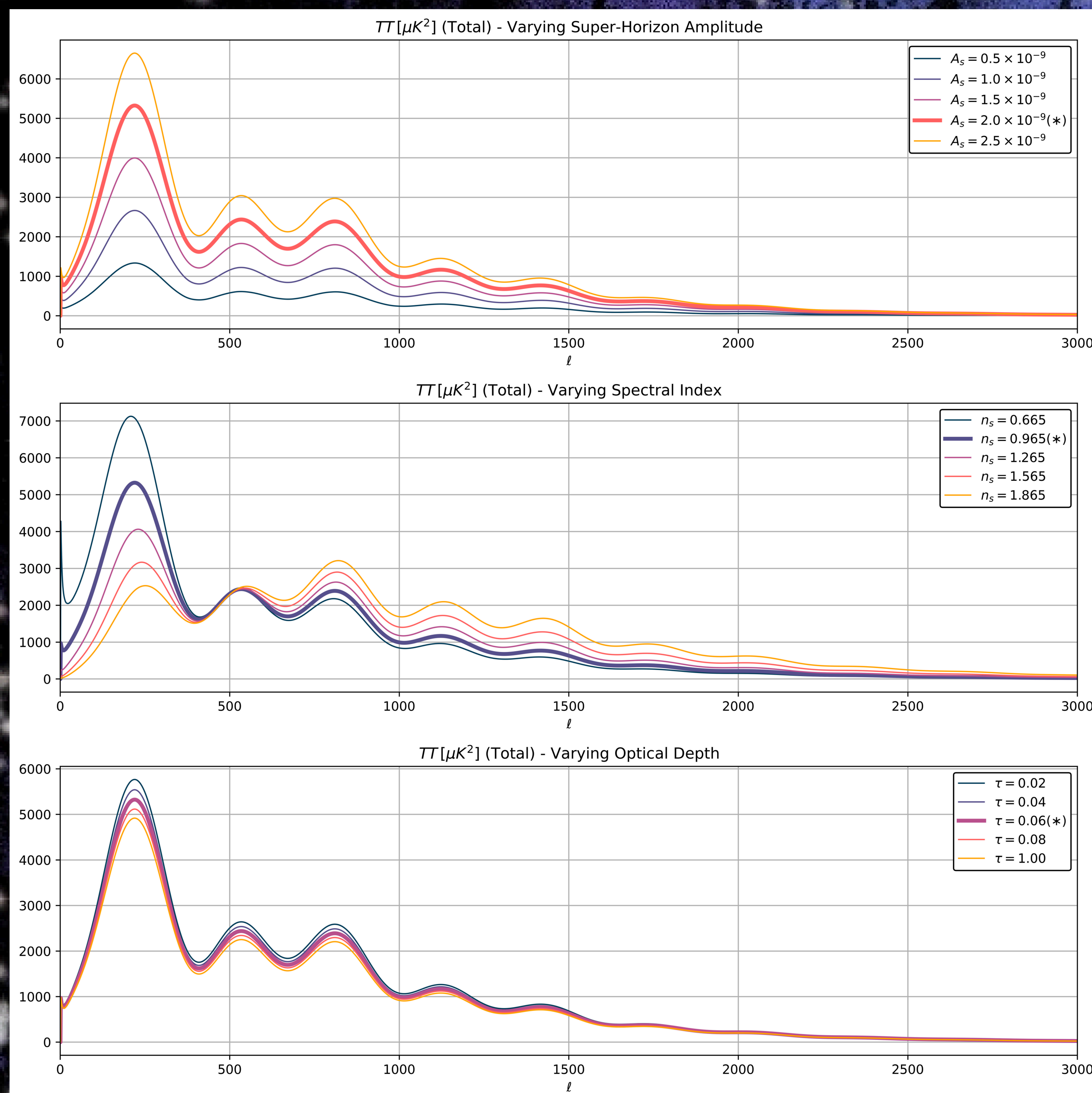
How can we get the best values to input into our models?

- The Universe can be modelled with as few as *six* variables.
- These models agree well with *real data* obtained from the sky, such as the *Cosmic Microwave Background radiation*.
- It is important therefore to be able to bound these variables in order to get the *most accurate* models.



Logan Aitchison,
Warwick Mathematics Institute
Supervisor: Dr. Siri Chongchitnan

Using statistical methods we were able to constrain the relevant variables, as seen in the figure below, thus obtaining more accurate values and showing the power of these types of methods.



Scan the QR code for more information!

