

CHAT-P

The system has been designed and built as a collaboration between researchers at Warwick Medical School, The University of Sheffield, men with prostate cancer, clinicians, InfoFlex and Prostate Cancer UK.

Following a five-year period of development, testing in the clinical setting in a National Institute of Health funded research study and further refinement, CHAT-P is now ready for implementation.

For further information on features of CHAT-P

Please contact:

Julia Roscoe

Email: J.Roscoe@warwick.ac.uk Tel: 02476 151885

Dr Veronica Nanton

Email: v.nanton@warwick.ac.uk

For technical information please contact

Marc Warburton Email: mwarburton@infoflex.co.uk



An introduction to

CHAT-P

Composite Holistic Adaptive Tool- prostate:

online cancer-specific Holistic Needs Assessment

CHAT-P is a secure online prostate specific holistic needs assessment suitable for men at all stages of the pathway of care. The system, implemented with InfoFlex, is adaptive, allowing men to select areas of concern from 11 top level domains, ranging from physical symptoms to financial issues.

Their selection opens up a series of menus containing more detailed items, enabling men to quickly identify and communicate specific concerns to their health care professionals to assist effective care planning.

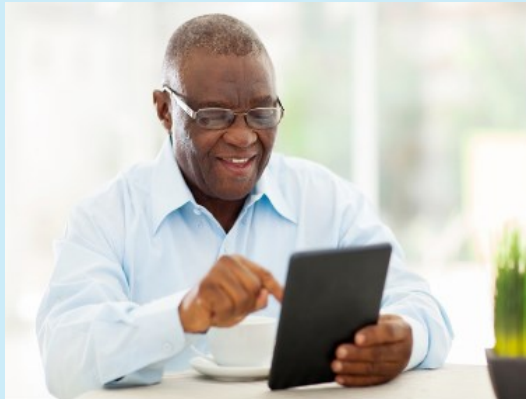


CHAT-P

CHAT-P enables men with prostate cancer to:

Rapidly **IDENTIFY** their prostate-specific needs and broader concerns

Easily **COMMUNICATE** these to their health care team via a variety of internet enabled devices



ACCESS relevant sources of information and advice tailored to their responses

CHAT-P

CHAT-P helps health-care professionals to:

Rapidly **ASSESS** their patients' concerns through a system generated summary

Promptly **RESPOND** to red flag symptoms requiring urgent attention

DEVELOP a care plan with patients using the system's output



SHARE information with other linked health care professionals