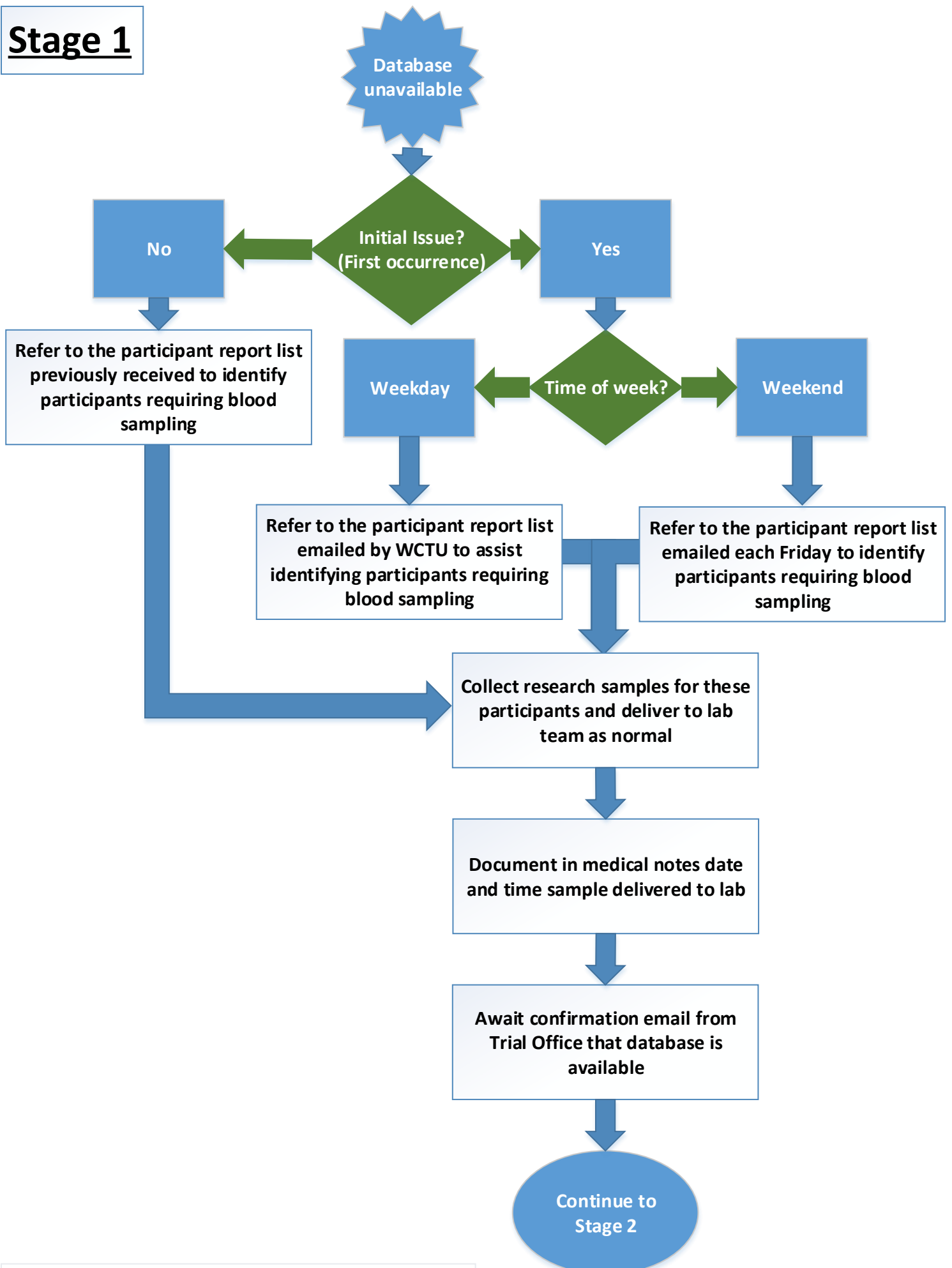
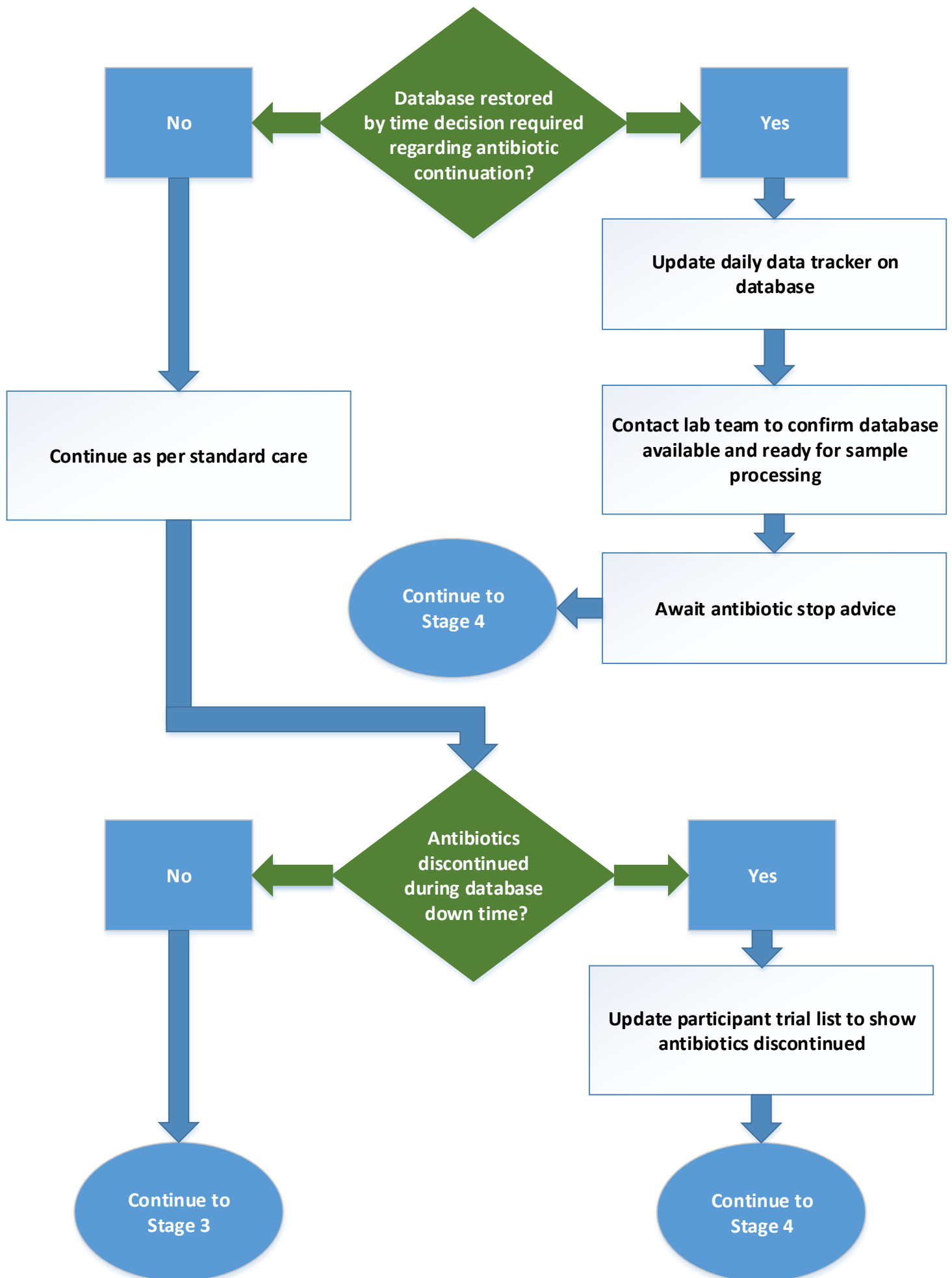


Stage 1

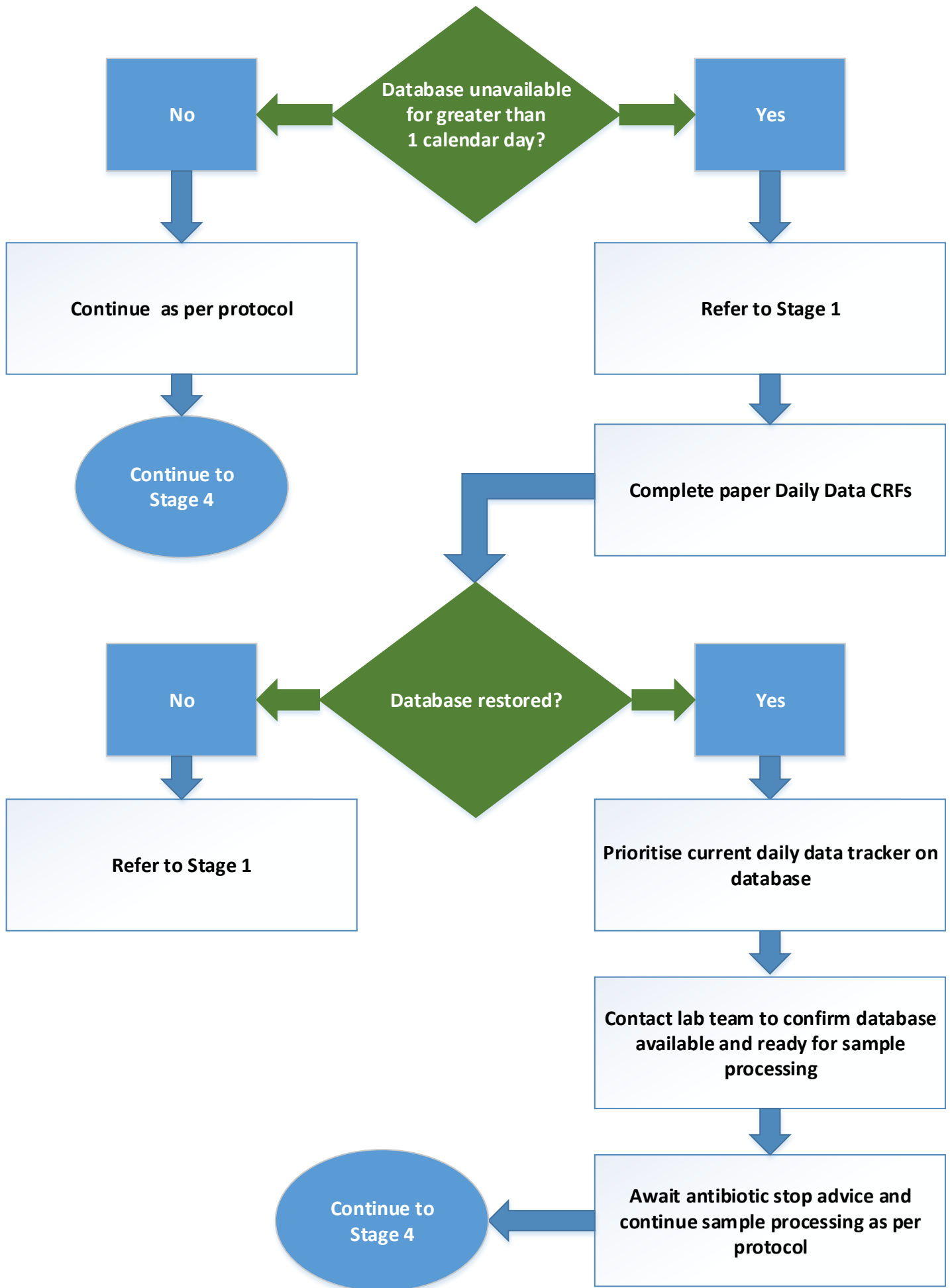


Note- The participant report list can be used to track which patients are no longer receiving antibiotics on any subsequent days and, therefore, are not part of the sampling process. If you have not received the participant report list, contact WCTU at adaptsepsistrial@warwick.ac.uk or +44 (0)24 7615 1386

Stage 2 – Antibiotic Advice



Stage 3 – Prolonged Database Issue



Stage 4 – Paper CRFs

