

# Experiences of an Associate PI

**Ranvir Cheema**

**CT4 (ACCS Anaesthetics)**

**The Royal Wolverhampton NHS Trust**

**Working in partnership**

The Royal Wolverhampton NHS Trust  
Walsall Healthcare NHS Trust



**Care Colleagues**  
**Collaboration Communities**

## What is the Associate Principal Investigator Scheme?

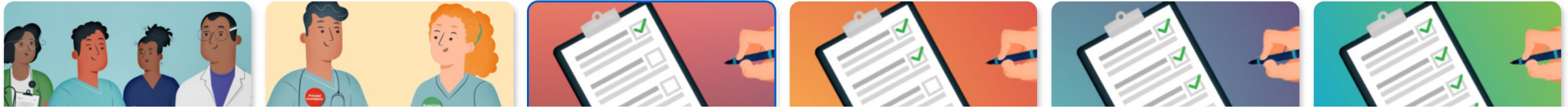
The Associate PI Scheme is a six month in-work training opportunity, providing practical experience for healthcare professionals starting their research career.

People who would not normally have the opportunity to take part in clinical research in their day-to-day role have the chance to experience what it means to work on and deliver an NIHR portfolio trial under the mentorship of an enthusiastic Local Principal Investigator (PI). A Principal Investigator is an individual responsible for the conduct of a research study at a site.

Associate Principal Investigators receive formal recognition of engagement in NIHR Portfolio research studies through the certification of Associate PI status, endorsed by the NIHR and Royal Colleges.



Care Colleagues  
Collaboration Communities



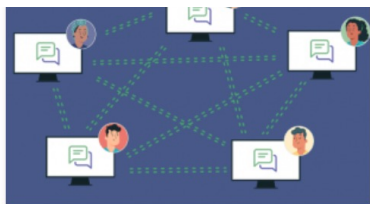
## Welcome to Month 1 of the Associate PI scheme

During Month 1, we expect you may have completed the below activities from the Associate PI Scheme checklist:

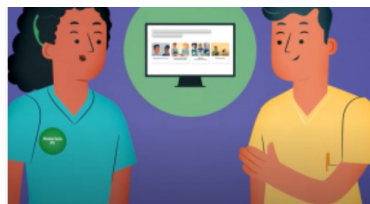
- Acted as a member of the research team and signed the study-specific site delegation log or site contact information as appropriate.
- Worked with the PI to ensure that the delegation log is correctly completed for each member of the research team - particularly rotating junior doctors, and yourself as the Associate PI Trainee.
- Disseminate the study to the local department/hospital.
- Complete GCP Training using the '**GCP and Research Delivery e-Learning hub**' link below (*this must be completed during Month 1*). If you have previously completed GCP training please toggle the status of the tile to 'complete' by clicking on the tick icon in the top right-hand corner of the below tile.

**Do not worry if you have not completed all of the above activities during your first month on the Scheme, we have only highlighted activities we think you may have been able to achieve.**

In the GCP tile below, please indicate whether or not you have completed your GCP training. Click the tick in the top-right corner to toggle the completion status you have an up-to-date GCP certificate.



**Associate PI Scheme Forum**



**Alumni Area**

# My experience...

I have had the pleasure of being mentored through the Associate PI scheme by an excellent PI, and had the support of a fantastic research team.

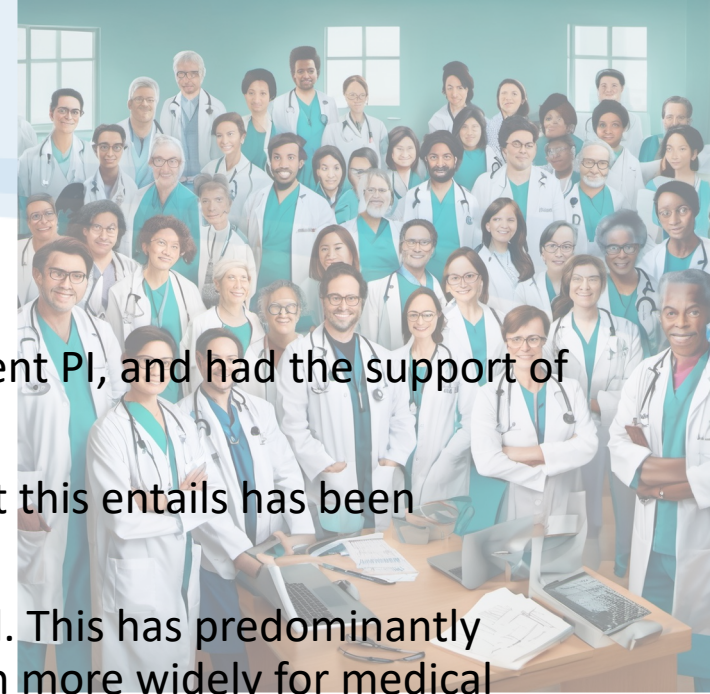
As an associate PI, I have been able to contribute to the study setup process- seeing what this entails has been invaluable.

After successful setup, I have viewed my role to maximise recruitment within my hospital. This has predominantly been through running study specific training- initially for anaesthetic colleagues, but then more widely for medical registrars and our critical care outreach teams.

I meet regularly with the PI and our research nurses to identify what is going well, as well as reviewing missed recruitment opportunities, and trying to put in place plans to mitigate against this.

I noted that we had many postgraduate doctors in training and clinical fellows, working across all specialties, who were keen to assist with the study and had completed the study specific training, but were not on the CRASH team. I also noted that we were missing opportunities for recruitment due to core cardiac arrest team responders needing to focus on clinical management, and recruitment to the study being seen to be a lower priority task. To remedy this, we created a rota of these enthusiastic trainees who now carry a cardiac arrest bleep and attend cardiac arrests purely to recruit patients to the study. This is done during their normal-shifts, or during educational development time, with permission from their parent specialty.

*Unfortunately we haven't taken any photos during our training sessions, the above image developed by an AI bot was used to illustrate these points during the presentation.*



# Lessons learnt

- We have struggled with anaesthetists not attending cardiac arrest calls, thus preventing randomisation.
- To prevent this, we are constantly reminding anaesthetic colleagues about the study, with daily bleeps in the morning, and attending the cardiac arrest team briefings to remind all team members about the study.
- We are constantly empowering colleagues to fast-bleep the 1<sup>st</sup>-on anaesthetist to attend the cardiac arrest call when a patient eligible for recruitment to the study is identified.



Thank you

