 We are on X! @iRehabTrial

NEWSLETTER

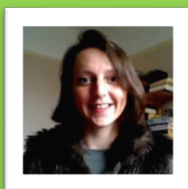
Issue: Feb 2024

Edition: 02

Welcome to the 2nd iRehab trial newsletter of 2024. As ever, we hope these updates are useful but do let us know if there are any areas you would like us to focus on. Previous newsletters can be found on our [website](#).

Next iRehab Drop-in Session

Monday 4th March 1:00-2:00 pm



A special extended session led by iRehab's Caroline Wilson who will present a range of recruitment ideas.

A reminder email with the Teams link was circulated soon.

April iRehab Drop-in Session

Monday 1st April 1:00-1:30 pm 

Topic: TBA

Please let us know if there is anything in particular you would like us to focus on.

Meeting details have been sent out, but a reminder will be recirculated nearer the time.

REMINDERS



Checking for readmissions and deaths: It is so important to regularly check for readmissions and deaths among your iRehab participants. We contact participants 8 weeks and 26 weeks after their randomisation for their follow-up assessments, and really want to avoid contacting participants or their family during difficult times. As such, please ensure you are aware which participants are approaching 8 and 26 weeks post-randomisation, check for readmissions and deaths, and let us know as soon as possible.



CPMS deadline: the next cut off for CPMS recruitment activity uploads is looming in April. Please make sure all recruitment activity is uploaded in good time so we can ensure we have the correct accruals for your site.



Adding participants to CPMS/EDGE: Only add participants when you receive the randomisation notification. Enter the month of randomisation for 'recruited' and 'consented'. We will confirm research activity on 1st every month. I.e. if you consent someone in June and they are randomised in July, all activity for this participant should be entered as July. This ensures we are recording the correct accruals at your site.

Helpful Trial links:

- [Trial updates and tips](#)
- [Frequently asked questions](#)
- [Database guidance](#)
- [SIV and database training slides](#)
- [Trial documentation](#)
- [Co-enrolment](#)

We also have helpful tips and step by step guides on completing the CRFs, specifically the pre-screening log. Guidance on completing these can be found on our [website](#).

RECRUITMENT UPDATE

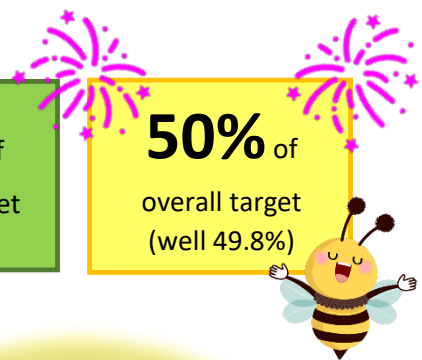
On 28th January 2024, **213** participants have been randomised and **17** patients registered awaiting baseline data collection before randomisation. Thank you to all sites for continuing to screen for iRehab, a total of **1708** people have been screened so far.

Hospital	Randomisations
North Manchester General	17
North Devon District	16
Birmingham Heartlands	15
Southampton General	14
Wythenshawe	12
Queen Alexandra	10
Royal Liverpool University	10
Queen's	10
Royal Glamorgan / Prince Charles	10
Watford General	9
Kingston	9
Musgrove Park	7
Pinderfields	7
Hereford County	6
Glangwili General	6
Aintree University	6
Good Hope	5
West Suffolk	5
Queen Elizabeth (Lewisham)	5
Craigavon Area	4
Derriford	3
Royal Blackburn	3
Glan Clwyd	3
Whittington	3
Altnagelvin	2
University Hospital Coventry	2
Royal Oldham	2
James Paget	2
Stoke Mandeville	2
Freeman	2
Royal Victoria	2
Salford Royal	1
Ysbyty Gwynedd Bangor	1
Warrington	1
Ulster Hospital	1



54% of
February target

50% of
overall target
(well 49.8%)




Well done to our top recruiters this month:
Kingston Hospital, North Manchester General, and Wythenshawe Hospital!


A warm welcome to
James Cook Hospital who joined iRehab in February.


Congrats to **Ulster Hospital** for recruiting their first participant!