 We are on X! @iRehabTrial

NEWSLETTER

Issue: Jan 2024

Edition 01

Welcome to the 1st iRehab trial newsletter of 2024, we hope your year has got off to a good start. As ever, we hope these updates are useful but do let us know if there are any areas you would like us to focus on. Previous newsletters can be found on our [website](#).

Next iRehab Drop-in Session

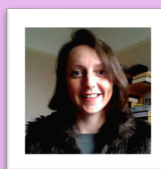
Monday 5th February 1:00-1:30 pm

iRehab site teams from **North Devon District Hospital** and **Birmingham Heartlands** will be contributing to the February session, discussing local recruitment experiences. As both sites are top recruiters, we are looking forward to hearing more!

A reminder email with the Teams link was circulated earlier today.

March iRehab Drop-in Session

Monday 4th March 1:00-2:00 pm



A special extended session led by iRehab's Caroline Wilson who will present a range of recruitment ideas.

Meeting details have been sent out, but a reminder will be recirculated nearer the time.

REMINDERS



Screening logs: please update your participant eCRF screening forms. There are about 250 patients on average that are pending final screening data, e.g. yes/no to being eligible/wanting to take part.



CPMS deadline: the next cut off for CPMS recruitment activity uploads is looming in April. Please make sure all recruitment activity is uploaded in good time so we can ensure we have the correct accruals for your site.



Adding participants to CPMS/EDGE: Only add participants when you receive the randomisation notification. Enter the month of randomisation for 'recruited' and 'consented'. We will confirm research activity on 1st every month. I.e. if you consent someone in June and they are randomised in July, all activity for this participant should be entered as July. This ensures we are recording the correct accruals at your site.

Helpful Trial links:

- [Trial updates and tips](#)
- [Frequently asked questions](#)
- [Database guidance](#)
- [SIV and database training slides](#)
- [Trial documentation](#)
- [Co-enrolment](#)

We also have helpful tips and step by step guides on completing the CRFs, specifically the pre-screening log. Guidance on completing these can be found on our [website](#).

RECRUITMENT

On 30th January 2024, **196** participants have been randomised and **11** patients registered awaiting baseline data collection before randomisation.

Thank you to all sites for continuing to screen for iRehab, a total of **1539** people have been screened so far.

Hospital	Randomisations
North Devon District	15
North Manchester General	15
Southampton General	14
Birmingham Heartlands	14
Queen Alexandra	10
Wythenshawe	10
Queen's / King George	10
Royal Glamorgan / Prince Charles	10
Royal Liverpool University	9
Watford General	9
Musgrove Park	7
Kingston	7
Pinderfields	7
Hereford County	6
Glangwili General	5
Aintree University	5
Good Hope	5
Queen Elizabeth (Lewisham)	4
West Suffolk	4
Craigavon Area	3
Royal Blackburn	3
Glan Clwyd	3
Whittington	3
Altnagelvin	2
Derriford	2
University Hospital Coventry	2
Royal Oldham	2
James Paget	2
Stoke Mandeville	2
Freeman/Royal Victoria Infirmary	3
Salford Royal	1
Ysbyty Gwynedd Bangor	1
Warrington	1
GRAND TOTAL	196



56% of
January target

46% of
overall target



Well done to our top recruiter this month:
Birmingham Heartlands



Congrats to **Royal Victoria Infirmary** for recruiting their first participant!



A warm welcome to **Whiston Hospital** and **Royal Berkshire Hospital** who joined iRehab in January

Want some helpful tips on recruiting participants for iRehab, [check out our tip guide!](#)