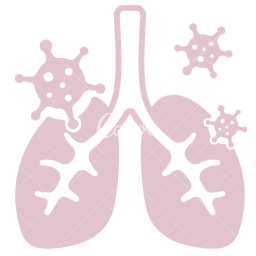
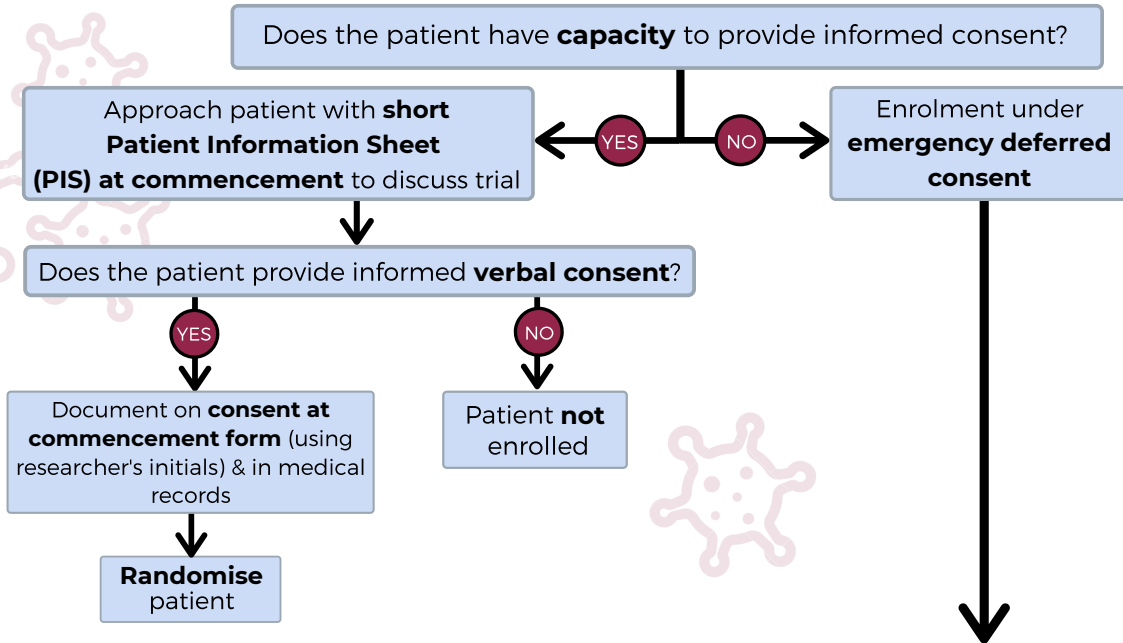


A quick guide to consent in England, Wales & Northern Ireland



1 Patient consent at commencement (prior to enrolment)

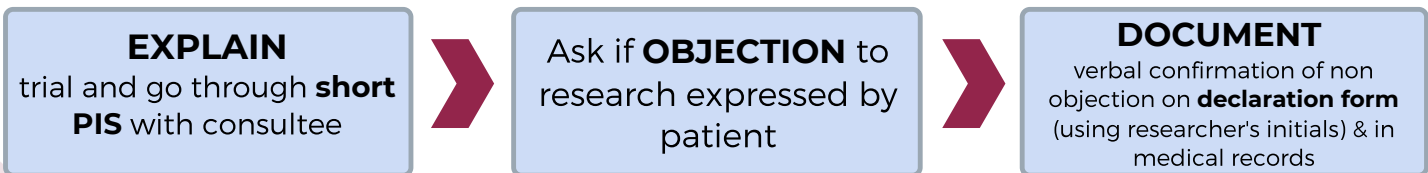


2 Deferred consent - patient regains capacity following enrolment



If consent is **not** obtained before hospital discharge- contact patient by telephone (up to 3 attempts) 📞

3 Consultee opinion - patient does not regain capacity by discharge



Personal Consultee

- person who is engaged in caring for participants (not professionally or for payment) and is willing to be consulted
- contact by telephone 📞

Professional Consultee

- registered medical practitioner, independent to the trial and is willing to be consulted
- approached if personal consultee not available

3 copies of consent/declaration form: Site file, patient/consultee & medical records

Full versions of PIS at commencement/recovery available to download from website if requested by patient or consultee