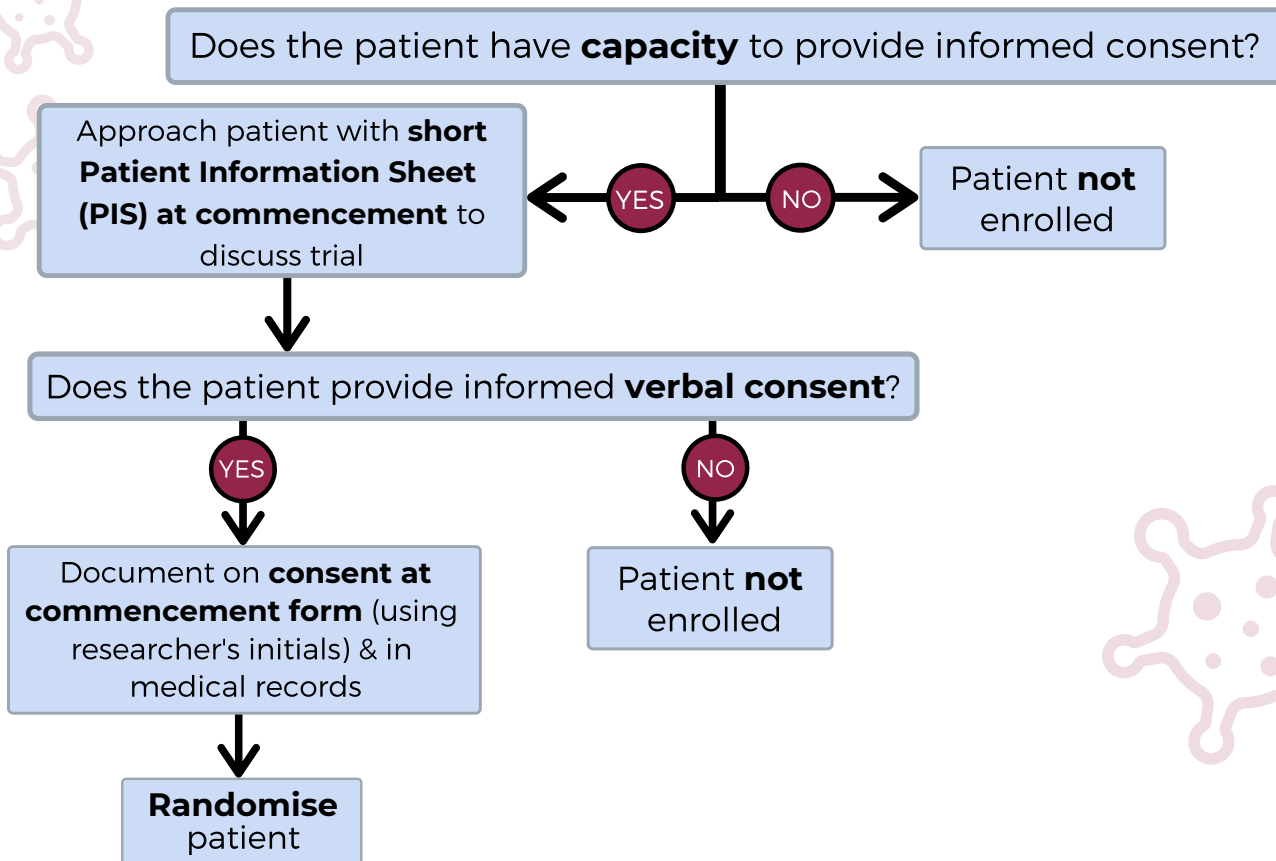



## A quick guide to consent in Scotland

### Patient consent at commencement (prior to enrolment)



- **3 copies of signed consent form:** site file, patient, medical records
- Copies of documents, including full version of PIS available on [website](#)

### Patients that lack capacity

 It is not practical or appropriate to consult a guardian/welfare attorney prior to enrolment without placing the potential participant at risk of harm from delaying treatment.

**These patients will not be entered into the study as Scottish regulation do not allow emergency deferred consent.**