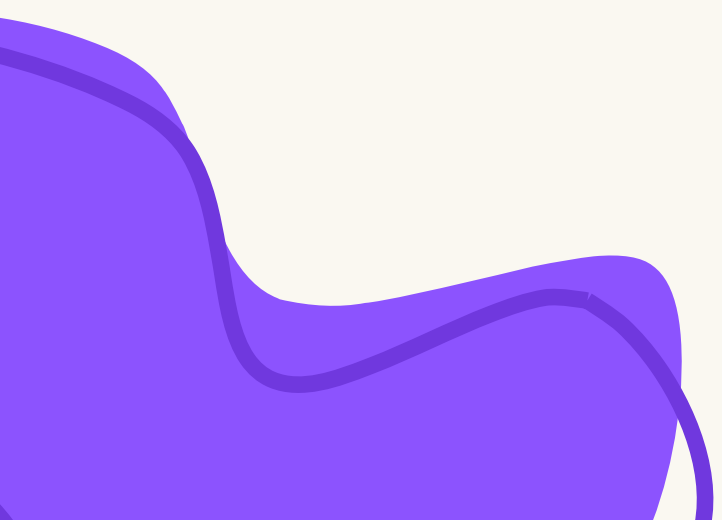




sis

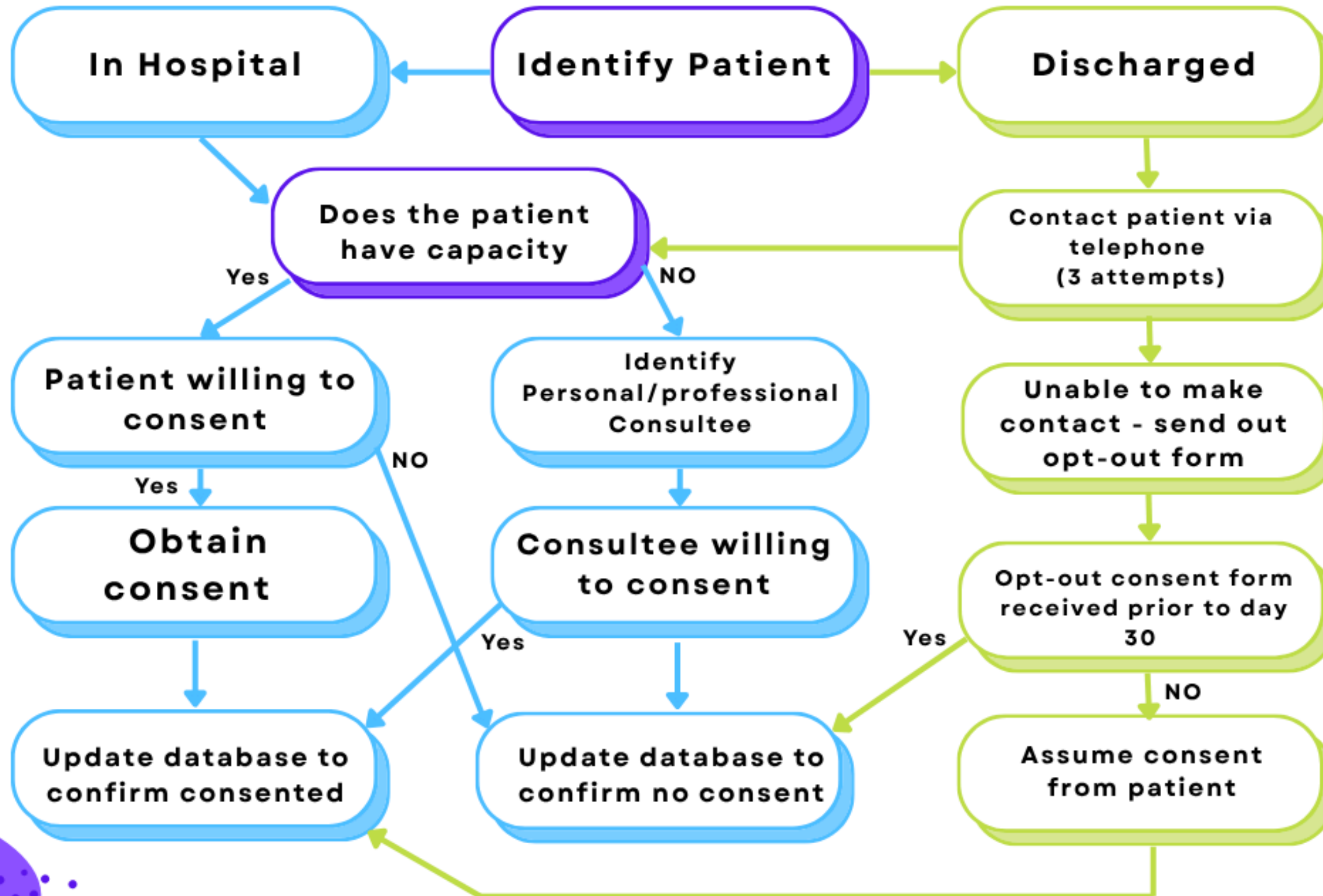
Site Catch-Up



Updates

- **Protocol 7.0, 16May2025**
- **Opt-Out Consent Model**
- **PIS/ICF**
- **Patient Questionnaire Booklet**
- **Database update**
- **All 5 Ambulance Services open
(SCAS, LAS, NWAS, IWAS, WAST)**
- **Current Recruitment Total - 748**

Consenting





Reminders

Consent CRF Completion

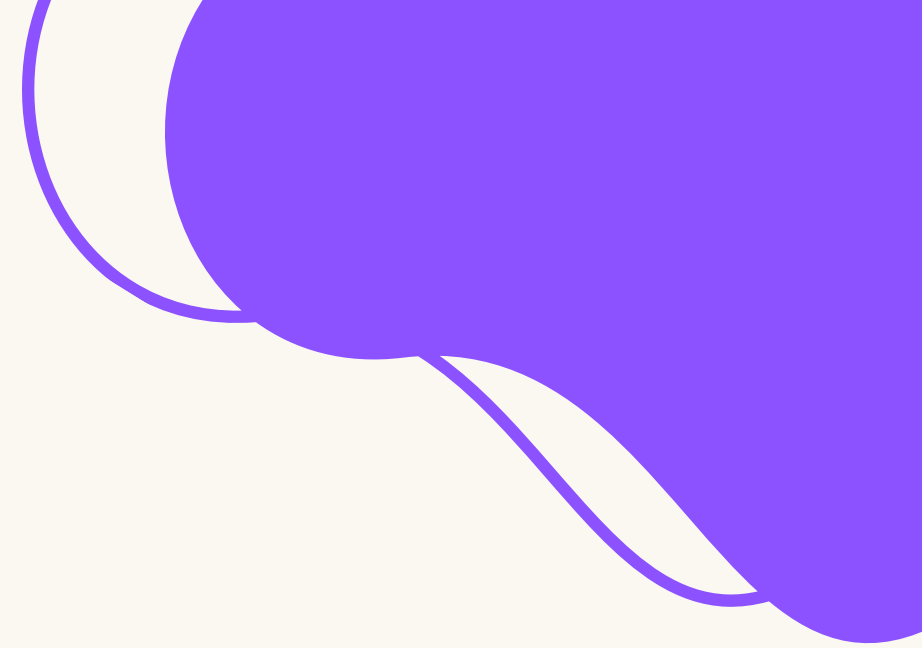
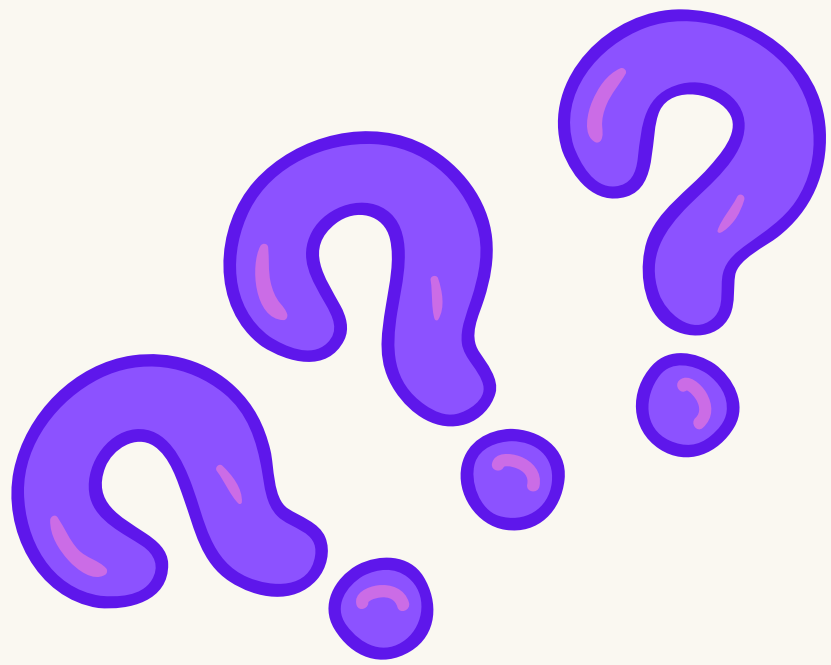
Please ensure the consent CRF is completed as soon as you have gained consent. For the opt-out model, if you have not had a response within 30 days of randomisation please mark the consent form as - 'Yes - no opt out received within 30 days'

Discharge CRF Completion

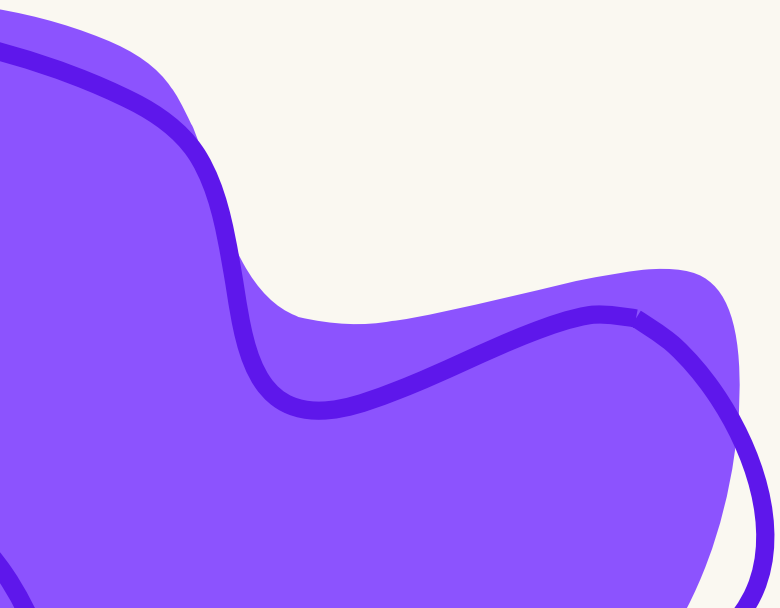
Please ensure the discharge CRF is completed ASAP after patient has discharged (prior to day 30). This helps determine who will be responsible to complete the day 30 follow up

Withdrawal

- Withdrawal from patient-reported outcomes but routine health data collection can continue
- Withdrawal from any future data collection but data already collected can be retained
- Withdrawal from any future data collection and removal of previously collected identifiable data



Questions





Thank



You