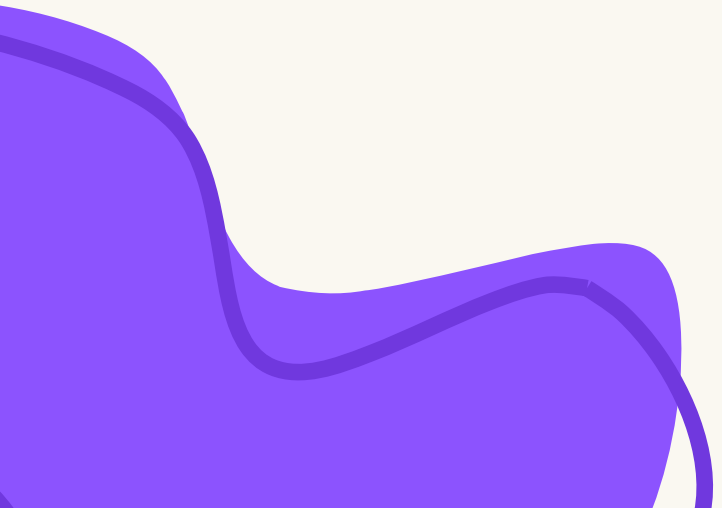




sis

Site Catch-Up

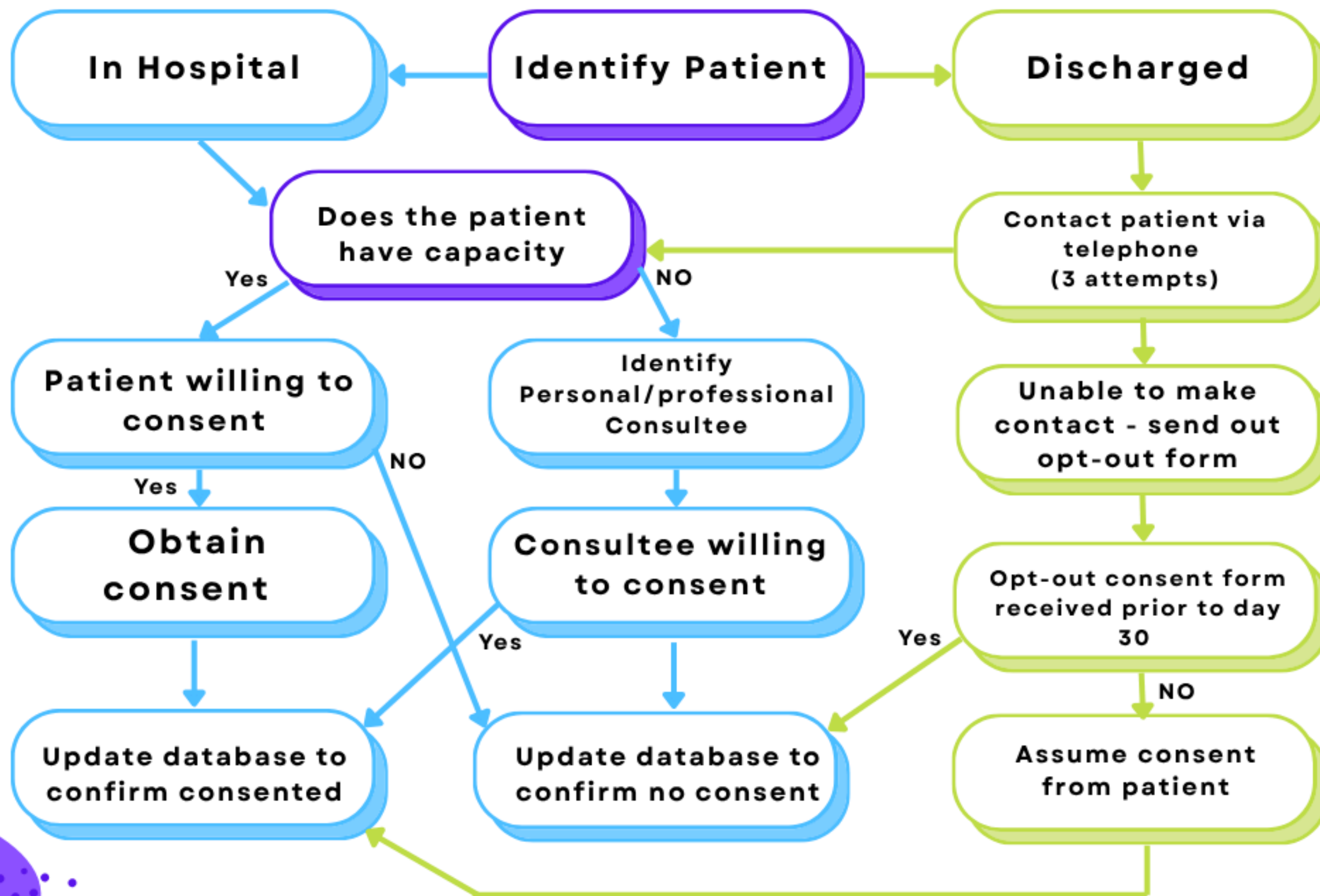


Updates



- **Protocol 7.0, 16May2025**
- **Opt-Out Consent Model**
- **PIS/ICF**
- **Patient Questionnaire Booklet**
- **All 5 Ambulance Services open
(SCAS, LAS, NWAS, IWAS, WAST)**
- **Current Recruitment Total - 659**

Consenting





Reminders

Withdrawal

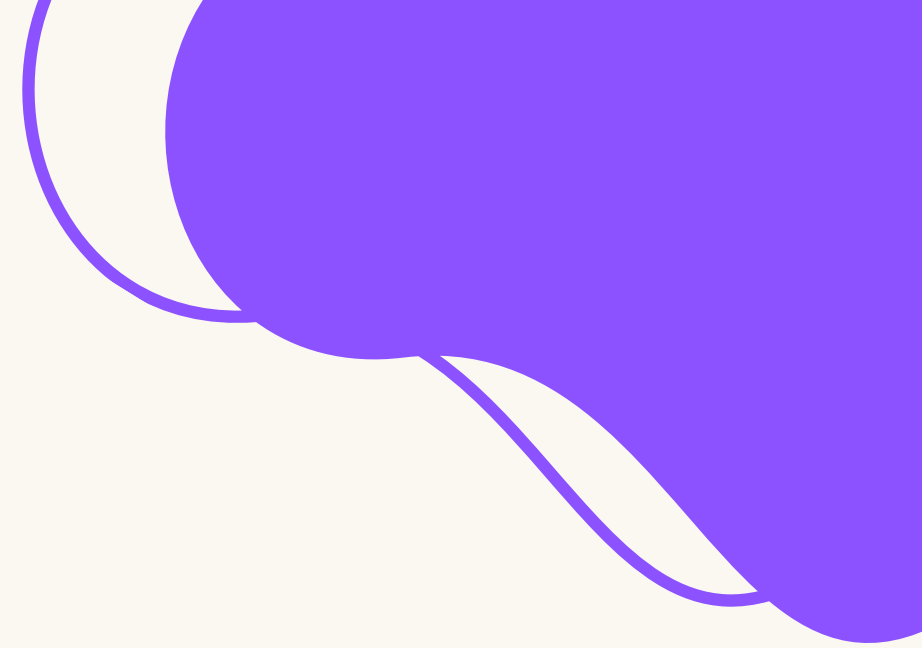
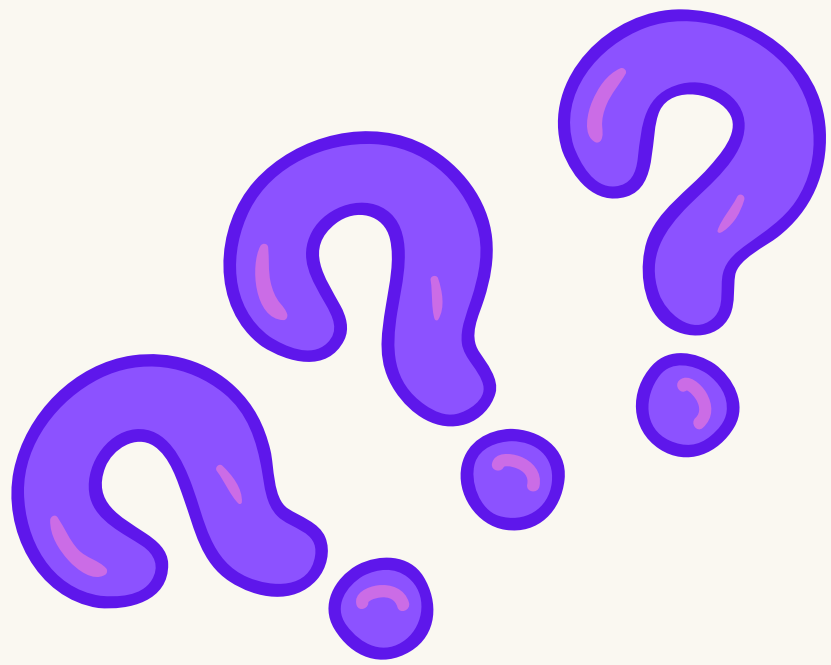
- Withdrawal from patient-reported outcomes but routine health data collection can continue
- Withdrawal from any future data collection but data already collected can be retained
- Withdrawal from any future data collection and removal of previously collected identifiable data

Discharge CRF Completion

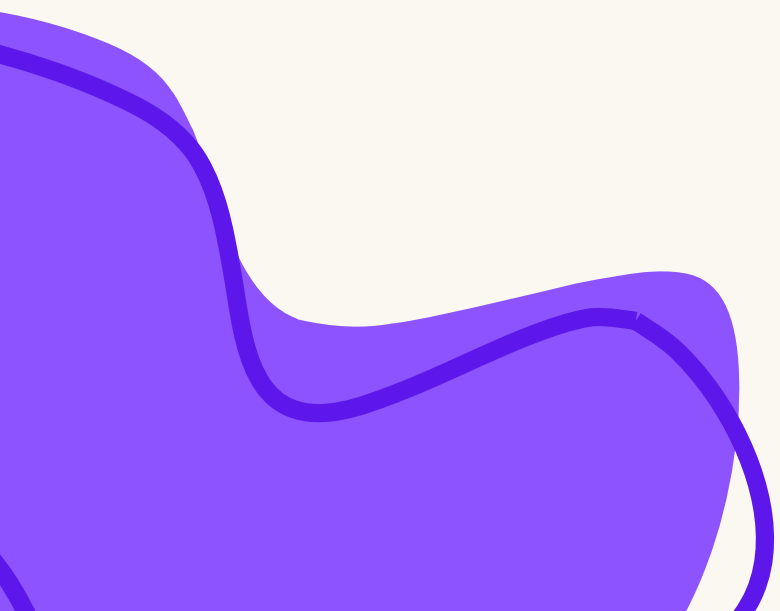
Please ensure the discharge CRF is completed ASAP after patient has discharged (prior to day 30). This helps determine who will be responsible to complete the day 30 follow up

API Scheme (ID 54490)

SIS is open to the Associate Principal Investigator scheme, if you are interested, speak to your local PI and look up further details on the NIHR API web page



Questions





Thank



You