

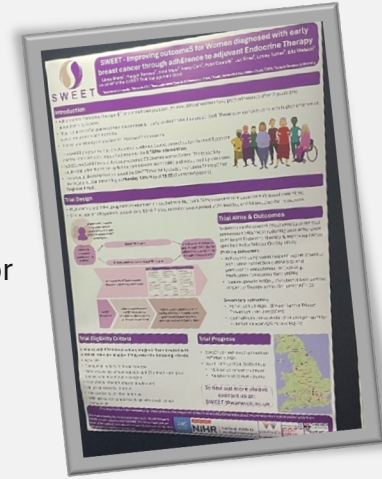
Welcome to the SWEET RCT newsletter!

May has been a busy month for SWEET, over 15 HT&Me initial consultations have been completed so far and recruitment continues to increase.

Thank you all for your hard work!

The WCTU team attended the Association of Breast Surgery (ABS) conference & the OPTIMA investigator meeting, where we had lots of interest. One of our CIs, Professor Linda Sharp, did a talk on the feasibility study at ABS which was very received well!

In other news, the WCTU SWEET team should be expanding shortly, however in the meantime we appreciate your patience in our response time to emails. If anything is time sensitive, please do mark as urgent & we will prioritise getting back to you.



Upcoming Events:

Database Drop-In Session

07 June 2024 12:00

Have any questions about the database?
Would a brief overview be helpful?
We are here to help!

TEAMS Meeting ID: 384 858 813 308
Passcode: CgM53e

We can forward you the meeting invite upon request :)



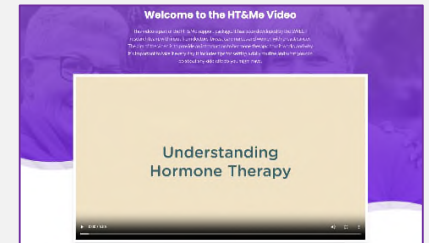
Recruitment Update:

Month	Reg	Rand
March	1	0
April	19	20
May (as of 28/05)	46	37
Total	66	57

Appointment letter reminder:

Please remember to send your intervention participants their Initial Appointment Confirmation letter.

This letter includes the link to the HT&Me animation, an integral component of the intervention.



Participant Co-enrolment

Co-enrolment is when a participant is simultaneously involved with two or more studies. We currently permit participant co-enrolment into OPTIMA, ATNEC & POETIC-A.

Below is process of gaining co-enrolment approval for a study:

- 1. Let us know:** If you have a participant involved in another study interested in SWEET, firstly refer to the permitted co-enrolment list (attached to this email), if the study is on this document, they can be co-enrolled into SWEET. If the study is not on this list, please reach out to us.
- 2. Internal Review:** We will contact the study to gain the necessary information for assessment. Our Trial Management Group (TMG) will then review at the next monthly meeting.
- 3. Outcome:** Following review, the study will either be deemed appropriate or not to co-enrol. If they are deemed suitable then we will reach out to the study team to have an agreement signed. Once the agreement is signed, sites will be informed, and co-enrolment can commence.



Screening log reminder: we are now of v2.0 of the screening log. We use your logs to monitor trends and identify any barriers to recruitment which could be key to the success of SWEET. We really appreciate you completing these.



Finally, we are here to support you. Please do let us know any way we can help!