



SWEET Drop In

11 Nov 2024

S W E E T

SUPPORTING WOMEN WITH ADHERENCE TO ADJUVANT ENDOCRINE THERAPY FOLLOWING BREAST CANCER

Topic 1: Meet BCN

We will be holding a meet the BCN session via Teams in the near future.

- This is for all sites operating the BCN Model
- Opportunity to meet the BCN Nurses delivering the intervention
- Details will be shared shortly



Topic 2: Save the Date!



Investigator Meeting: 15th January 2025

More details to be shared soon!!



Topic 3: Xmas Holiday

The University will be closed from 23rd December to 1st January 2025:

- **Database will be accessible throughout this period**
- **You will still be able to register and randomise**
- **There will likely be a small delay in reiving your HT & Me codes over this time**
- **All non-urgent queries will be responded to from 2nd January 2025.**
- **Please request all envelopes by 6th December**

Topic 4: Letters of Access and Process Evaluation

We are requesting Letters of Access for the Process Evaluation.

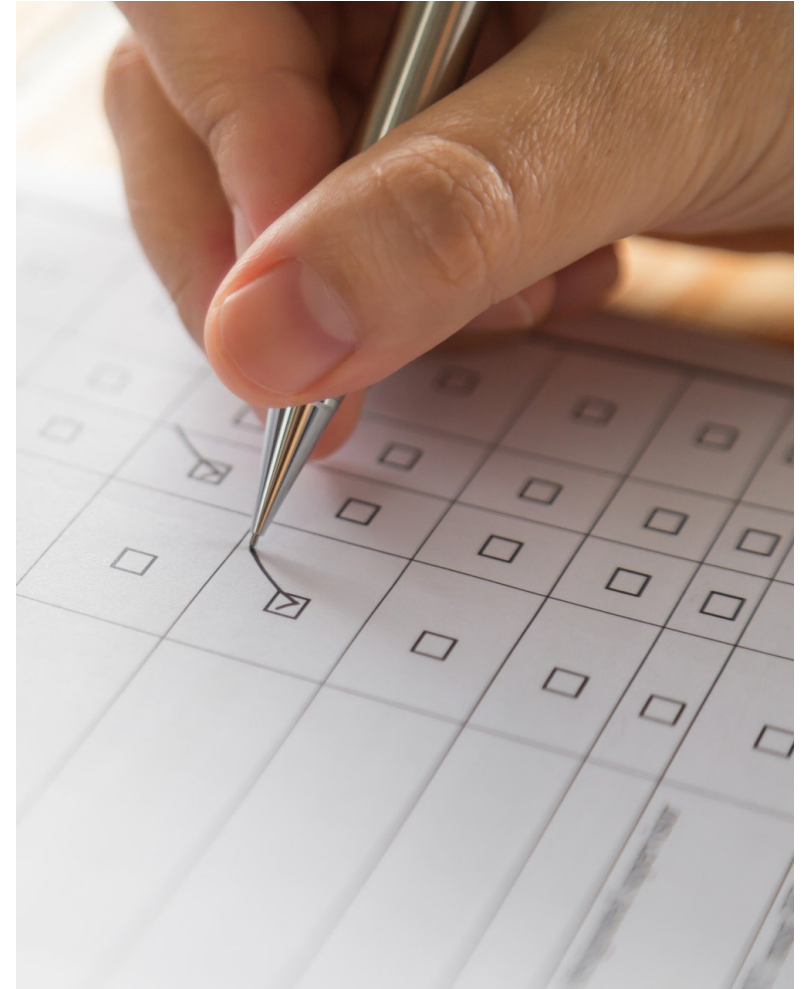
- If we are outstanding your L.O.A please try and get them approved and with is as soon as possible
- Interviews will start in the New Year!



Topic 5: Follow Up

We have not reached the 6 month follow up timeframe for our first cohort of patients.

- Please start sending out your Follow Up Questionnaires in plenty of time
- Still waiting on EPROMS so please send paper until informed by SWEET.



Topic 6: Recruitment

!!! 420 Patients Recruited !!!

!! 37 Open Sites !!

- Recruitment Animation
- Methods of Approach



Q&A

