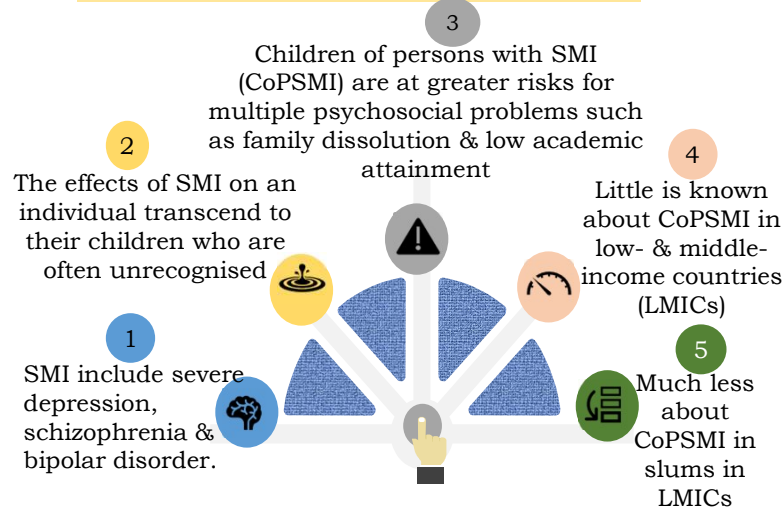


Experiences, Wellbeing and Needs of Children of Persons with Serious Mental Illness in Slum Communities in Ibadan, Nigeria

Adeola Afolayan^{1,2}, Sagar Jilka², Swaran Singh², Olayinka Omigbodun^{1,3,4}, Joshua Akinyemi⁵, Helena Tuomainen²

¹Centre for Child and Adolescent Mental Health, College of Medicine, University of Ibadan, Nigeria; ²Centre for Mental Health and Wellbeing Research, Warwick Medical School, University of Warwick, United Kingdom; ³Department of Psychiatry, College of Medicine, University of Ibadan, Nigeria; ⁴Department of Psychiatry, University College Hospital, Ibadan, Nigeria; ⁵Department of Epidemiology and Biostatistics, College of Medicine, University of Ibadan, Ibadan, Nigeria

Background



Research Aim

This study therefore aims to determine the wellbeing, experiences, intervention needs and strategies for children of persons with serious mental illness (CoPSMI) aged 10-19 years in slum communities in Ibadan, Nigeria

To map existing data on the wellbeing, experiences & interventions for CoPSMI aged 5-24 years in LMICs through a **scoping review**

Work Package 1

Review Question 1:

What are the study characteristics of research on CoPSMI aged 5-24 years in LMICs?

Review Question 2:

What themes have been explored about CoPSMI aged 5-24 in LMICs?

To determine the wellbeing, experiences, intervention needs and strategies for CoPSMI aged 10-19 years in slum communities in Ibadan, using a **mixed-methods approach**

Work Package 2

Study Question 1:

How do the wellbeing, experiences and intervention needs of CoPSMI differ from other children aged 10-19 years in slum communities in Ibadan?

Study Question 2:

What is the perception of CoPSMI & other stakeholders about intervention strategies to improve CoPSMI's wellbeing?

Research Methodology

Work Package 1: Scoping Review

Search strategy	Databases	Eligibility
<ul style="list-style-type: none"> Guided by Joanna Briggs Institute (JBI)'s Population, Context and Concept (PCC) strategy 	<ul style="list-style-type: none"> Seven electronic peer-reviewed databases Six grey literature databases 	<ul style="list-style-type: none"> No restrictions on the year of publication, language, study setting and study design

Work Package 1 Progress:

- (1) Pilot search completed
- (2) Protocol registration ongoing

Work Package 2: Mixed Methods Study

Quantitative phase:	Qualitative phase
<ul style="list-style-type: none"> Comparative cross-sectional study: <ul style="list-style-type: none"> CoPSMI in slums Non CoPSMI in slums 	<ul style="list-style-type: none"> In-depth interviews Focus group discussion Natural group interviews: <ul style="list-style-type: none"> CoPSMI ≥ 19 years Parents with SMI Parent's significant other

Work Package 2 Progress:

- (1) Local ethics secured

Research Relevance

Findings from this study will:

- Enhance the understanding of the experiences and wellbeing of CoPSMI in slum communities in LMICs
- Provide foundational data for culturally sensitive interventions for CoPSMI in slums in LMICs

Acknowledgement

This PhD is funded by a scholarship from the National Institute of Health Research (NIHR) through the The TRANSFORM project;

https://warwick.ac.uk/fac/cross_fac/mentalhealth/our-research/global/transform/.