

Sleep Duration and All-Cause Mortality: A Systematic Review and Meta-Analysis of Prospective Studies

Francesco P. Cappuccio, MD, FRCP¹; Lanfranco D'Elia, MD²; Pasquale Strazzullo, MD²; Michelle A. Miller, PhD¹

¹University of Warwick, Warwick Medical School, Clinical Sciences Research Institute, Coventry, UK; ²Department of Clinical and Experimental Medicine, "Federico II" University of Naples Medical School, Naples, Italy

Background: Increasing evidence suggests an association between both short and long duration of habitual sleep with adverse health outcomes.

Objectives: To assess whether the population longitudinal evidence supports the presence of a relationship between duration of sleep and all-cause mortality, to investigate both short and long sleep duration and to obtain an estimate of the risk.

Methods: We performed a systematic search of publications using MEDLINE (1966-2009), EMBASE (from 1980), the Cochrane Library, and manual searches without language restrictions. We included studies if they were prospective, had follow-up >3 years, had duration of sleep at baseline, and all-cause mortality prospectively. We extracted relative risks (RR) and 95% confidence intervals (CI) and pooled them using a random effect model. We carried out sensitivity analyses and assessed heterogeneity and publication bias.

Results: Overall, the 16 studies analyzed provided 27 independent cohort samples. They included 1,382,999 male and female participants (follow-up range 4 to 25 years), and 112,566 deaths. Sleep duration was assessed by questionnaire and outcome through death certification. In the pooled analysis, short duration of sleep was associated with a greater risk of death (RR: 1.12; 95% CI 1.06 to 1.18; $P < 0.01$) with no evidence of publication bias ($P = 0.74$) but heterogeneity between studies ($P = 0.02$). Long duration of sleep was also associated with a greater risk of death (1.30; [1.22 to 1.38]; $P < 0.0001$) with no evidence of publication bias ($P = 0.18$) but significant heterogeneity between studies ($P < 0.0001$).

Conclusion: Both short and long duration of sleep are significant predictors of death in prospective population studies.

Keywords: Sleep duration; mortality; meta-analysis

Citation: Cappuccio FP; D'Elia L; Strazzullo P; Miller MA. Sleep duration and all-cause mortality: a systematic review and meta-analysis of prospective studies. *SLEEP* 2010;33(5):XXX-XXX.

SLEEP IS AN ANCESTRAL AND PRIMITIVE BEHAVIOR THAT IS SHARED ACROSS THE PLANET BY OVER A BILLION PEOPLE ON A DAILY BASIS. ITS underlying mechanisms, interactions, and long-term effects are still poorly understood. Sleep patterns of quantity and quality are affected by a variety of cultural, social, psychological, behavioral, pathophysiological, and environmental influences and have shown secular trends alongside changes in the modern society requiring longer hours of work, more shift-work and 24-7 availability of commodities, curtailing the duration of sleep to fewer hours per day across westernized populations.¹ This has led to increased reporting of fatigue, tiredness, and excessive daytime sleepiness.² Lack of sleep also exerts deleterious effects on a variety of systems with detectable changes in metabolic, endocrine,^{3,4} and immune pathways.⁵ Over the last few decades there has been growing evidence to suggest that too little sleep and too much sleep are associated with adverse health outcomes, including total mortality,^{6,7} cardiovascular disease,^{6,8-10} type 2 diabetes,¹¹ hypertension^{12,13} and respiratory disorders,¹⁴ obesity in both children and adults,^{15,16} and poor self-rated health.¹⁷ The relationship between duration of sleep and mortality has been often described as a U-shaped association, although other studies have not found such a uniform ef-

fect or have found no association. It is believed that different mechanisms may underlie such associations at either end of the distribution of sleep duration.¹⁸ Given the variety of studies, the large differences in the types and sizes of populations examined, the duration of follow-up, and the size of the effects, it is difficult to draw immediate conclusions on the consistency of the associations at either end of the distribution of sleep duration and at its effect size. The latter is important in public health to ascertain the likely impact at population level, if amenable to modification. The aims of this study were to (i) systematically review published prospective population-based studies, (ii) carry out a meta-analysis to assess whether the global evidence supports the presence of a relationship between either short or long duration of sleep and all-cause mortality, and (iii) obtain a quantitative estimate of the risk to assess the consistency and potential public health relevance. A meta-analysis allows the combination of the results of different studies, increasing the overall statistical power and the precision of estimates while controlling for bias and limiting random error.

METHODS

Literature search

We developed a search strategy to identify studies that reviewed the longitudinal association between duration of sleep and all-cause mortality. We searched the electronic databases MEDLINE (from 1966 to March 2009) and EMBASE (from 1980 to March 2009), as well as the Cochrane Library using the terms "sleep," "mortality," and "death." Furthermore, we reviewed reference lists of original and review articles to search for more studies. Only those that were published as full-length articles were considered. No language restriction was applied.

Submitted for publication June, 2009

Submitted in final revised form October, 2009

Accepted for publication February, 2010

Address correspondence to: Prof. Francesco P. Cappuccio, University of Warwick, Warwick Medical School, CSRI, CSB Building, UHCW Campus, Clifford Bridge Road Coventry CV2 2DX, UK; Tel: +44 24 7696 8662; Fax: +44 24 7696 8660; e-mail: f.p.cappuccio@warwick.ac.uk

Inclusion and Exclusion Criteria

For inclusion, studies had to fulfil the following criteria: (a) original article, (b) prospective cohort design, (c) assessment of duration of sleep as baseline exposure, (d) death recorded prospectively as outcome, (e) follow-up of at least 3 years, (f) adult population, (g) indication of the number of subjects exposed and of the rate or number of events in different sleep duration categories. Studies were excluded if: (a) case-control design was used. If multiple published reports from the same study were available, we included only the one with the most detailed information for both exposure and outcome.

Data Extraction

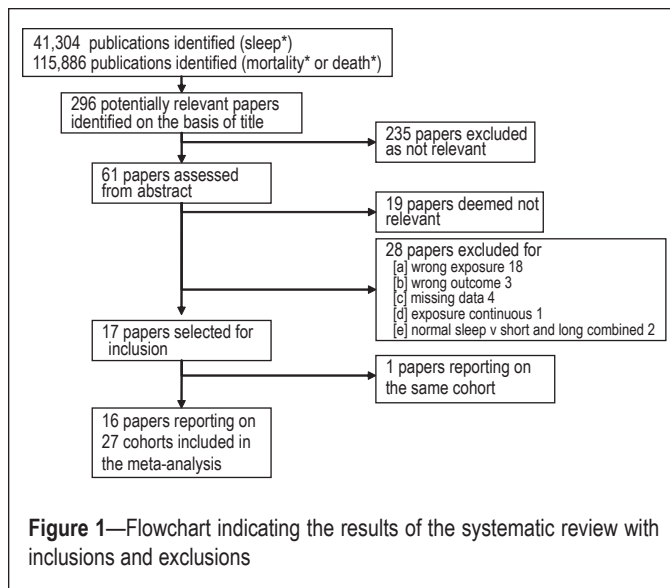
Data were extracted independently by two investigators (FPC and MAM), and differences were resolved by discussion and consensus. Relevant data included the first author's surname, year of publication, country of origin of the population studied, recruitment year, number of participants, number of deaths in each group, participants' age, gender, duration of follow-up, method used to measure sleep duration, reference category of sleep, category for "short" and "long" sleep, outcome assessment, relative risks or hazard ratios of death by both short and long sleep duration, corresponding 95% CI, and covariates adjusted in the statistical analysis.

Definition of "Short" and "Long" Sleep Duration

In each study we identified the reference category, being 7 h per night in the majority of studies,^{6,7,9,19-22} 7 to 8 h,²³⁻²⁶ 7 to 9 h,^{27,28} 6 to 8 h,¹⁰ and 9 h.²⁹ Short sleep was ≤ 5 h per night,^{6,7,20,22} ≤ 6 h,^{10,19,23,25} < 7 h,^{21,24,26-29} ≤ 4 h.⁹ Long sleep was defined as > 8 h per night,^{10,19,24,30} ≥ 9 h,^{6,7,20,22,23,25-28} ≥ 10 h,^{9,21} and ≥ 12 h.²⁹

Statistical Analysis

The quality of the studies included in the meta-analysis was evaluated by the Downs & Black Quality Index score system,³¹ a validated checklist for assessing the quality of both randomized clinical trials and non-randomized studies. It consists of several items distributed between 5 subscales: reporting, external validity, bias, confounding, and power. For the assessment of non-randomized, prospective studies, the maximum score is 19. Relative risks (RR) or hazard ratios (HR) were extracted from the selected publications and were used to measure the relationship between sleep duration and death. Their standard errors were calculated from the respective confidence intervals. The value from each study and the corresponding standard error were transformed into their natural logarithms to stabilize the variances and to normalize the distribution. The pooled RR (and 95% CI) was estimated using a random effect model. By comparison with the reference category of sleep duration, we estimated the pooled risk and 95% CI of death for the short and for the long sleep category, separately. The heterogeneity among studies was tested by Q-statistic and quantified by H-statistic and I²-statistic.³² Funnel plot asymmetry was used to detect publication bias, and Egger's regression test was applied to measure funnel plot asymmetry.³³ We recalculated the combined estimate after estimating from the asymmetry of the funnel plot the number of "missing" studies and their effect sizes and standard errors, a method known as "trim and fill." The influence of individual studies, from which the meta-analysis estimates are derived, was examined by omitting one study at a



time to see the extent to which inferences depend on a particular study or group of studies (sensitivity analysis). Subgroup analysis was carried out to assess possible sources of heterogeneity and to check for the potential impact of age, gender, socioeconomic status, definition of sleep duration, duration of follow-up, and geographic location on the relationship between duration of sleep and all-cause mortality. All statistical analyses were performed using MIX software version 1.7.³⁴

Role of the Funding Source

The study is part of the Sleep, Health & Society Programme of The University of Warwick. We did not receive funding for this project. The corresponding author had full access to all the data in the study and had final responsibility for the decision to submit for publication.

RESULTS

Characteristics of Study Cohorts

Based on our selection criteria, 17 studies were deemed suitable (Figure 1). One study was reported in two separate publications,^{9,35} and only one was included in the analysis. Where results were reported for men and women separately, they were entered into the analyses as separate cohorts. Therefore 16 studies reporting on 27 cohorts were included in the meta-analysis. We were unable to include results from the Alameda County Study due to lack of data, although 3 separate publications had been identified.³⁶⁻³⁸ Table 1 summarizes the characteristics of the included studies. Overall, the meta-analysis included 1,382,999 participants from 8 different countries (4 studies from the USA, 4 from Japan, 3 from the UK, and 1 each from Spain, Sweden, Finland, Israel, and Taiwan). Fourteen studies recruited both men and women, while 2 studies recruited only women. Follow-up ranged from 4 to 25 years. All studies assessed death through death certificates. Sleep duration was assessed by questionnaire in all studies. The total number of deaths reported was 112,566. Of the 14 studies that included both men and women, 10 reported outcomes separately for men and women.^{7,9,19,21,24-28,30} Overall, there were 25 cohorts available for the relationship between short sleep and mortality and

Table 1—Description of the studies included in the meta-analysis

Author	Year, Publication	Country	Cohort	Year, Baseline	Gender	Sample size	Deaths	Follow-up, y	Age, y (range)	Quality Score ¹	Exposure assessment	Outcome assessment	Adjusted variables
Tsubono	1993	Japan	Mihagi Prefecture	1988	Men & Women	4,318	207	4.0	61.4 (40+)	16	Questionnaire	Town's Death Register	age, sex
Ruigomez	1995	Spain	Health Interview Survey of Barcelona	1986	Men Women	395 594	224	5.0	74.3 (65+)	15	Questionnaire	Death certificate	age, education, perceived health status
Gale	1998	UK	DHSS	1973-4	Men & Women	1,299	1,158	23.0	75.4 (65+)	15	Questionnaire	Death certificate	age, BMI, systolic BP, social class, diagnosis
Kojima	2000	Japan	Shirakawa Town	1982-6	Men Women	2,438 2,884	147 109	11.9	46.9 (20-67) 47.7 (20-67)	15	Questionnaire	Death certificate	age, history of hypertension, stroke, heart and renal diseases and diabetes, use of sleeping pills, smoking and alcohol intake
Heslop	2002	UK	Scottish workplaces	1970-3	Men Women	6,022 1,006	2,303 262	25.0	(≤65)	16	Questionnaire	Death certificate	age, marital status, social class, risk factors, self-perceived stress
Kripke	2002	USA	CPS I	1982	Men Women	480,841 636,095	45,200 32,440	6.0	58.0 (30-102) 57.0 (30-102)	16	Questionnaire	Death certificate	age, race, BMI, education, occupation, marital status, exercise, smoking, churchgoing, intake of fat, and fiber, insomnia, History of heart disease, hypertension, cancer, diabetes, stroke, respiratory disease, kidney disease, medications, including sleeping pills
Mallon	2002	Sweden	County of Dalarna	1983	Men Women	906 964	165 101	12.0	56.0 (45-65)	18	Questionnaire	Death certificate	age
Burazeri	2003	Israel	Kiryat Yovel Community Health Study	1985-7	Men Women	760 915	198 205	10.0	64.0 (50+) 63.0 (50+)	17	Questionnaire	Death certificate	age, social class, country of origin, education, health status, PH of diabetes, CHD, stroke, CHF, smoking, alcohol consumption, physical activity, blood pressure, BMI, glucose, thiocyanate, creatinine, albumin, TC, HDL, homocysteine, siesta.
Amagai	2004	Japan	Jichi Medical School Cohort Study	1992-5	Men Women	4,419 6,906	289 206	8.2	55.0 (40-69) 55.2 (40-69)	15	Questionnaire	Death certificate	age, SBP, total cholesterol, BMI, smoking, alcohol consumption, education, marital status
Patel	2004	USA	Nurses' Health Study	1986	Women	82,969	5,409	14.0	53.4 (30-55)	17	Questionnaire	National Death Index	age, smoking, alcohol consumption, physical activity, depression, snoring, BMI, history of cancer, CVD, hypertension, diabetes, and shift work
Ferrie	2007	UK	Whitehall II Study	1985-8	Men & Women	9,871	566	17.1	44.6 (35-55)	18	Questionnaire	Death certificate	age, sex, marital status, employment grade, smoking, physical activity, alcohol consumption, self-rated health, BMI, SBP, total cholesterol, physical illness, GHQ, prevalent CHD
Hublin	2007	Finland	Finnish Twin Cohort	1975-81	Men Women	9,529 10,265	1,850 1,850	22.0	40.7	17	Questionnaire	Death from population register	age, education, marital status, working status, social class, BMI, smoking, binge drinking, alcohol intake, physical activity, and life satisfaction
Lan	2007	Taiwan	Survey of Health & Living Status of the Elderly	1993	Men Women	1,748 1,331	816 522	8.4	71.3 (64+) 71.9 (64+)	17	Questionnaire	Death certificate	age, marital status, income, smoking, alcohol, BMI, exercise, depression, PMH of heart disease, stroke and cancer, naps
Gangwisch	2008	USA	NHANES I	1982-4	Men & Women	5,806 3,983	273 1,604	8-10	45.0 (32-59) 73.0 (60-86)	18	Questionnaire	Death certificate	age, sex, physical activity, smoking, depression, education, living alone, low income, daytime sleepiness, nighttime awakening, ethnicity, sleeping pill use, weight, hypertension, diabetes, general health, cancer
Ikehara	2009	Japan	JACC Study	1988-90	Men Women	41,489 57,145	8,548 5,992	14.3	58.8 (40-79) 60.2 (40-79)	18	Questionnaire	Death certificate	age, BMI, PH of hypertension, diabetes, alcohol, smoking, education, exercise, employment, mental stress, depression, fresh fish intake
Stone	2009	USA	SOF Study	1993-4	Women	8,101	1,922	6.9	77.0 (69+)	18	Questionnaire	Death certificate	age, BMI, PH of diabetes, Parkinson's, dementia, COPD, non-skin cancer, osteoarthritis, CVD, hypertension, walks, alcohol use, smoking, depression, cognitive status, estrogen, and hypnotic use

¹Ref. 31

27 cohorts available for the relationship between long sleep and mortality.

Short Duration of Sleep and Mortality

Data on the relationship between short sleep and mortality are shown in Figure 2. In the pooled analysis, short duration of sleep (25 cohorts from 15 studies, n = 1,381,324 with 112,163 deaths) was associated with greater risk of death (RR: 1.12; 95% CI 1.06 to 1.18, P < 0.01), with no evidence of publication bias (P = 0.74; Figure 3a), and no missing study identified by the trim and fill method, but significant heterogeneity between studies (I² = 39%, P = 0.02).

Long Duration of Sleep and Mortality

Data on the relationship between long sleep and mortality are shown in Figure 4. Long duration of sleep (27 cohorts from 16 studies, n = 1,382,999 with 112,566 deaths) was associated with a greater risk of death (1.30; [1.22 to 1.38]; P < 0.0001) with no evidence of publication bias (P = 0.18; Figure 3b), but significant heterogeneity between studies (I² = 71%, P < 0.0001). The trim and fill method detected one missing study with a revised estimate of 1.29 (1.21 to 1.37).

Sources of Heterogeneity

Short sleep

The effect was consistent in younger (< 60 years) and older (≥ 60 years) cohorts, in men and women, whether or not socioeconomic status was adjusted for (Figure 5a). The effect did

not differ by variations in the definition of short sleep, length of follow-up, or geographic location (Figure 5a).

Long sleep

The effect was stronger in older than younger cohorts (heterogeneity: P = 0.01), increased with the definition of long duration of sleep from > 8 h, ≥ 9 h, and ≥ 10 h per night (heterogeneity: P = 0.0004), tended to be weaker in studies with follow-up ≥ 20 years (heterogeneity: P = 0.01), and appeared stronger in studies carried out in East Asian countries (Japan and Taiwan) compared to Europe and the USA (heterogeneity: P = 0.01; Figure 5b). The effect did not differ by gender or socioeconomic status (Figure 5b).

DISCUSSION

This study provides a comprehensive and systematic review of the literature and quantitative estimates of the longitudinal associations between habitual short and long duration of sleep and all-cause mortality in population-based studies around the world. It adds to a recent meta-analysis published after our original submission.³⁹ Our study shows an unambiguous and consistent pattern of increased risk of dying on either end of the distribution of sleep duration. Pooled analyses indicate that short sleepers (commonly < 7 h per night, often < 5 h per night) have a 12% greater risk, and long sleepers (commonly > 8 or 9 h per night) a 30% greater risk of dying than those sleeping 7 to 8 h per night. These results confirm the presence of a U-shaped association, with some heterogeneity among studies, no presence of publication bias, and a high statistical power

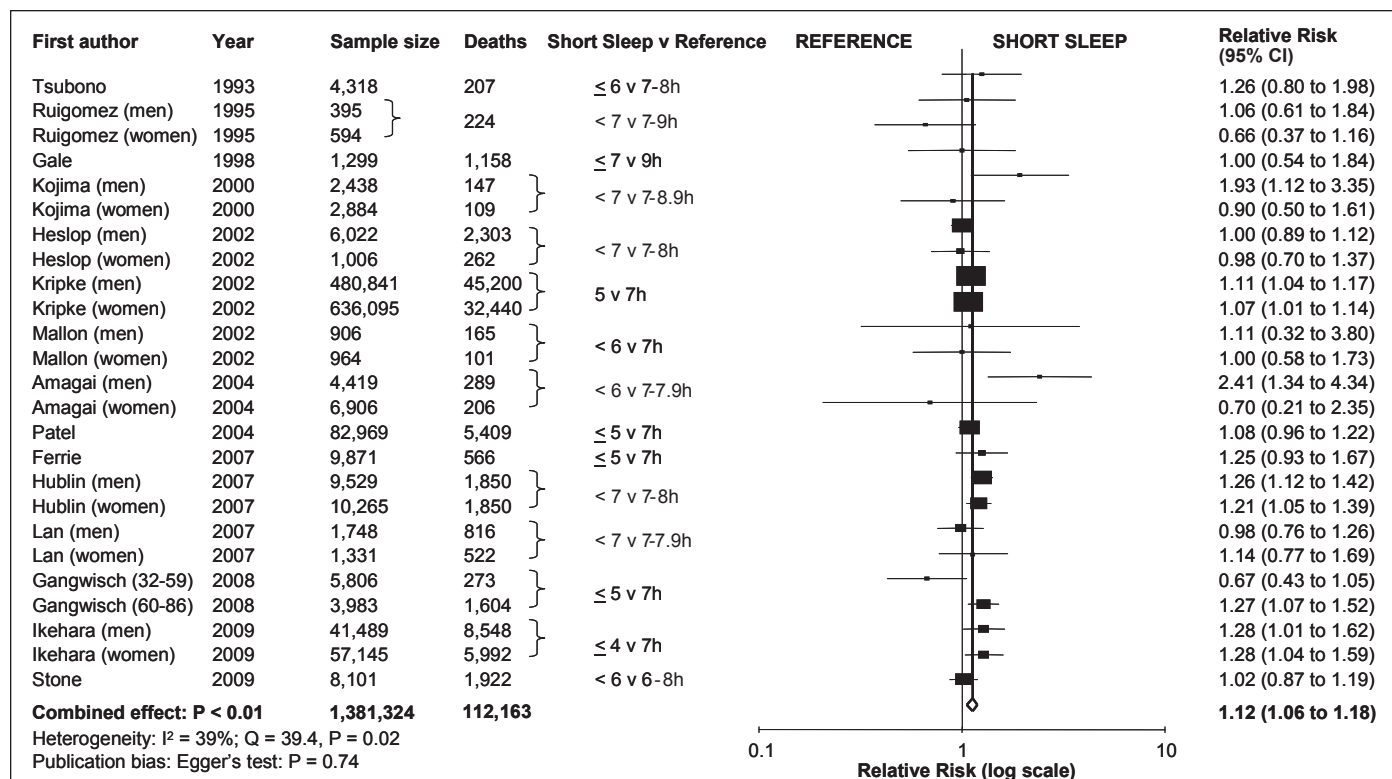


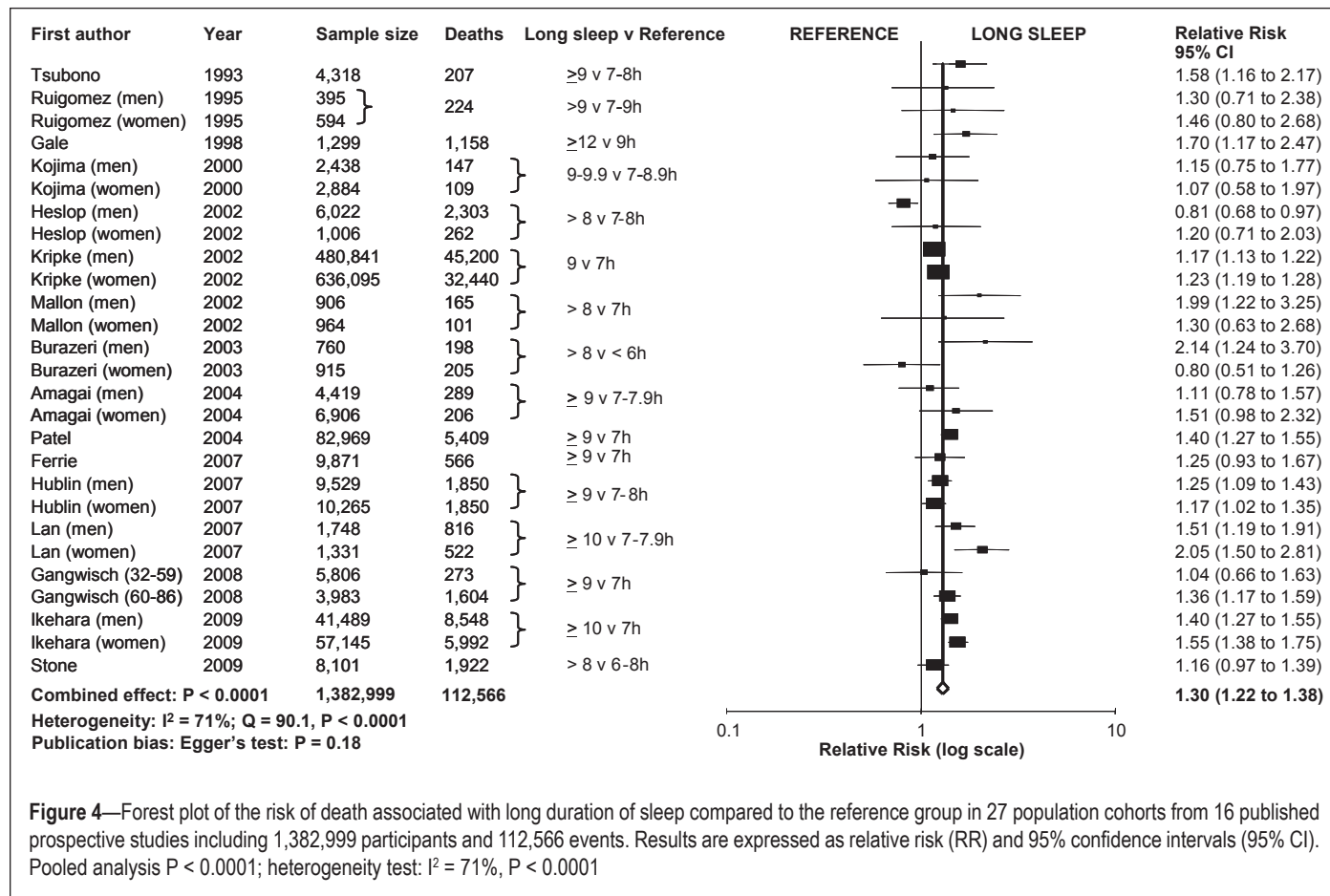
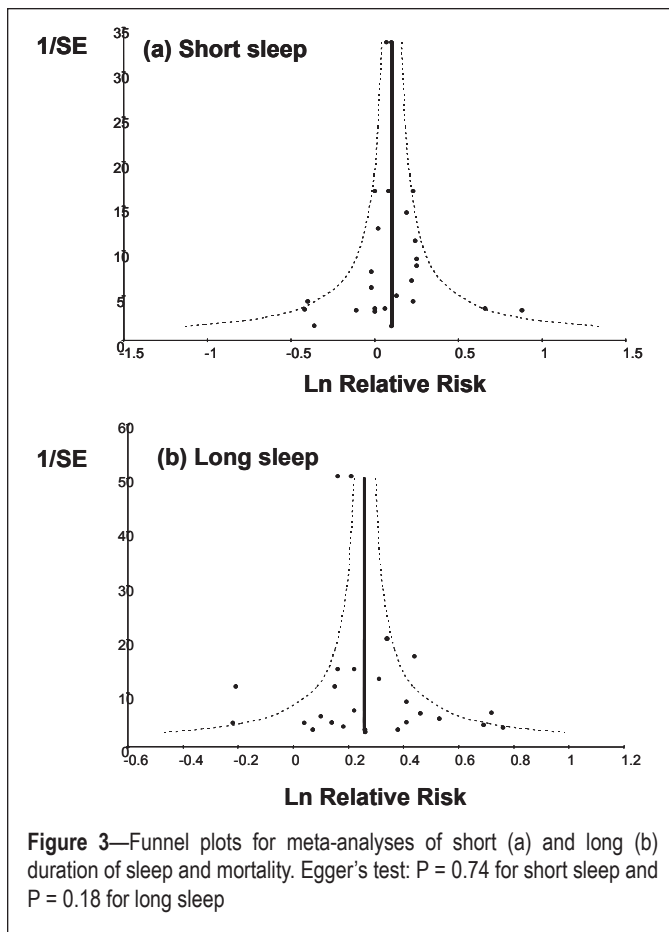
Figure 2—Forest plot of the risk of death associated with short duration of sleep compared to the reference group in 25 population cohorts from 15 published prospective studies including 1,381,324 participants and 112,163 events. Results are expressed as relative risk (RR) and 95% confidence intervals (95% CI). Pooled analysis P < 0.01; heterogeneity test: I² = 39%, P = 0.02

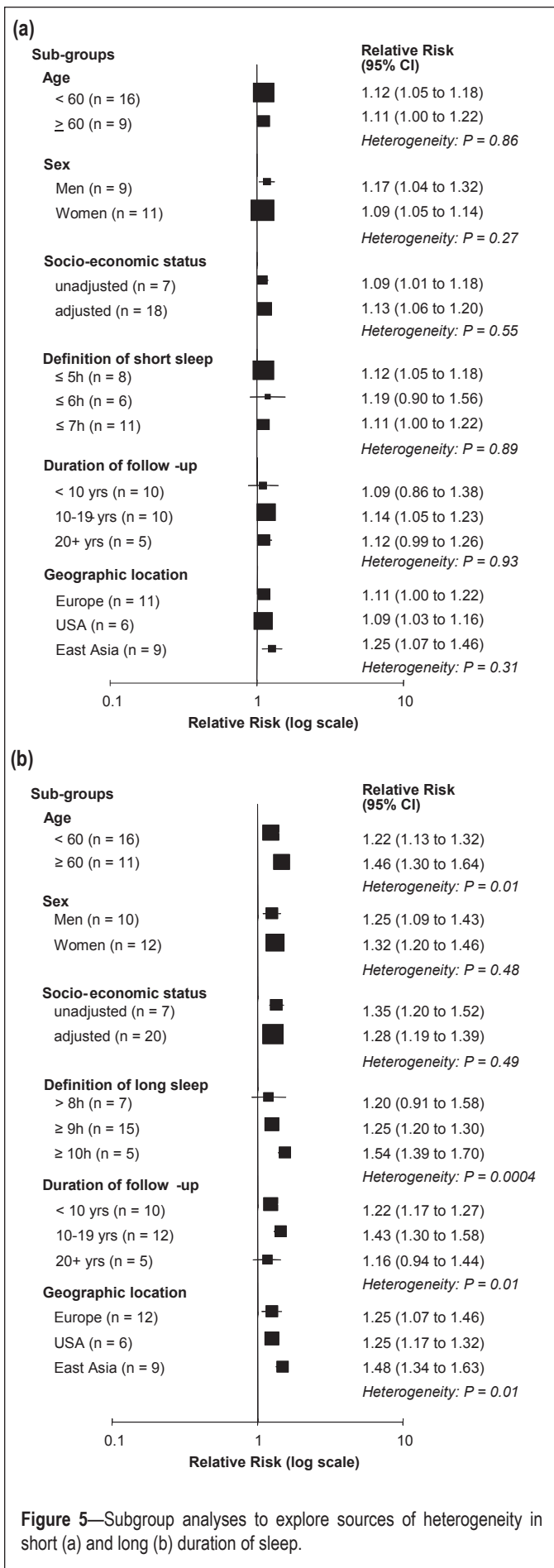
conferred by over 1.3 million participants included with more than 110,000 events. The studies allowed for a large number of potential confounders. Furthermore, for short sleep the effects were comparable between men and women, did not depend on age, socioeconomic status, definition of short duration of sleep (≤ 5 , ≤ 6 h, or ≤ 7 h per night), duration of follow-up, or geographic location. In contrast, for long sleep, the estimate of effect was stronger in older cohorts, in studies where long sleep was defined as ≥ 10 h per night, in follow-ups not longer than 19 years, and in East Asian cohorts.

These results are of interest for several reasons. First, the direction of the associations is consistent in different populations. Although the meta-analysis detected significant heterogeneity between studies, further sensitivity analysis and the absence of publication bias are in favor of consistent effects across populations. Second, they indicate an effect size of potential relevance. Third, the consistency of assessments of both exposure (duration of sleep by questionnaire) and outcomes (death certificates) across studies limits the degree of variability due to differences in methods.

Study Limitations

First, the quality of the data cannot go beyond the quality of the individual studies included.³¹ Second, a meta-analysis of observational data, though prospective, is open to important fallacies in that it cannot directly control for confounding. We made an attempt to allow for multiple confounding by including adjusted estimates from multivariate models from each contributing study. However, residual confounding and bias





remain a possibility. Third, the results can only be representative of the studies that have been included and are unable to provide a representative inference of all studies published, but not included. Nevertheless, there was no evidence of publication bias. These results are therefore important in guiding the assessment of current evidence and the definition of future research strategies and public health policy decisions.

All studies used sleep questionnaires to determine self-reported sleep duration within their populations. This method often did not allow (unless explicitly built as additional questions) to differentiate time asleep from time in bed or to estimate number and duration of naps. It is not usually feasible to obtain more detailed and objective measures of sleep in large prospective population studies. Sleep diaries, actigraphy, and polysomnography from some large population and small-scale investigations have shown high correlations between subjective estimates of sleep duration and the more direct assessments^{20,40} However, in the few examples in the literature their use confirmed the results obtained previously with self-reported sleep assessment.^{41,42} Furthermore, assessments of sleep duration in the primary health care setting rely on self-reported data from patients.

Sleep duration was assessed at one point in time in all studies, and it is possible that a single measure of exposure may not fully capture the sustained effects of sleep duration over time when relating them to long-term mortality. Changes in sleep duration over time may represent a better measure of exposure in this context. Three studies have addressed this issue by measuring change in sleep duration over time as a proxy for prolonged exposure to short or long sleep duration in relation to mortality. In the West of Scotland study,²⁴ participants were assessed twice 4 to 7 years apart and followed up for 25 years. Those who reported at both time points < 7 h of sleep showed an increased risk of death from all causes (men 1.15 [0.93 to 1.42] and women 1.73 [0.99 to 3.03]), as well as an increased risk of death from cardiovascular causes (men 1.19 [0.90 to 1.58] and women 2.30 [0.94 to 5.60]). In the Whitehall II Study,⁶ changes in sleep duration were assessed 5 years apart, and follow-up lasted nearly 12 years. Both a decrease and an increase in sleep duration over time were associated with increased all-cause mortality (1.62 [1.17 to 2.25] and 1.75 [1.24 to 2.47], respectively). However, while the increased risk of death in those who had increased their sleep was mainly attributable to an increase in non-cardiovascular deaths (2.06 [1.38 to 3.08]), those who had curtailed their duration of sleep had an increased risk of death predominantly from cardiovascular causes (2.04 [1.20 to 3.49]). In a large Finnish study of twins, changes in duration of sleep over 6 years (either to shorter or longer sleep) were associated to increased mortality in both men and women.²⁶ Finally, it is likely that the study samples included in the analysis did not exclude subjects with obstructive sleep apnea-hypopnea syndrome (OSAS). These would represent approximately 4% of middle-aged men and 2% of middle-aged women.^{43,44} OSAS is associated with obesity, disrupted and short sleep, excessive daytime sleepiness and high rates of morbidity and mortality, predominantly due to cardiovascular disease.⁴⁵ Whilst it is possible that they may have contributed to the observed increased risk of death amongst short sleepers, the adjustment for obesity or body mass index in almost every study would have corrected for this.

Heterogeneity

Our results are consistent with other epidemiological evidence indicating increased risk of cardiovascular morbidity and mortality,^{8,9,46} coronary artery calcifications,⁴⁷ cardiovascular risk predictors like hypertension,^{12,13,48} obesity,^{15,16,49-51} type 2 diabetes or impaired glucose control,¹¹ and atherogenic lipid profile⁵² with shorter duration of sleep.

Gender-differences in outcomes and risk related to duration of sleep have also been reported.^{8,13,53-55} Our analysis was repeated after stratification by gender. No differences were detected in the association with either short or long duration of sleep and all-cause mortality. Ideally long follow up durations would be appropriate to assess the influence of sleep duration on health over the life course.²² We excluded a priori short follow-up studies (< 3 years) to avoid measurements of sleep duration being too close to the time of death and included studies with follow-up ranging from 4 to 25 years. Furthermore, a stratified analysis by duration of follow-up was carried out, that did not suggest any trend. There was some indication that the mean effects for both short and long duration of sleep were stronger in studies carried out in East Asia, predominantly Japan. The explanations may be different. For short sleep, some cross-cultural comparisons have shown that the average duration of sleep in shorter in countries of East Asia,¹⁷ possibly as a result of societal pressures. For long sleep, the stronger association with mortality may, at least in part, be the result of longer life expectancy in countries like Japan compared to Europe and the US. It is likely that the shape of the relationship between sleep duration and mortality is heavily influenced by deaths in elderly participants. This view is supported by a stronger effect of long duration of sleep on all-cause mortality in older cohorts (≥ 60 years). Finally, socioeconomic status does not appear to modify the risk estimates when we compared cohorts that did or did not adjust for this variable.

Potential Mechanisms

The mechanisms that underlie these associations are not fully understood. Causative mechanisms relating short duration of sleep to adverse health outcomes include reciprocal changes in circulating levels of leptin and ghrelin,^{56,57} that in turn would increase appetite, caloric intake, reduce energy expenditure,⁴ and facilitate the development of obesity⁵⁷ and impaired glycemic control⁵⁸ with increased cardiovascular risk. Increased cortisol secretion and altered growth hormone metabolism have also been implicated.⁵⁹ Finally, low grade inflammation is activated during short sleep, with possible implications not only for cardiovascular disease but also for other chronic conditions including cancer.⁵ Conversely, no studies published to date have demonstrated a possible mechanism mediating the effect of long duration of sleep as a cause of morbidity and mortality. The association between short duration of sleep and mortality may be explained by residual confounding and comorbidities.⁶⁰ In particular, depressive symptoms, low socioeconomic status, unemployment, low level of physical activity, undiagnosed health conditions, poor general health, and cancer-related fatigue have all been shown to be associated with long duration of sleep and to confound the association with morbidity and mortality.⁶⁰

Implications

Currently, there is no evidence that sleeping habitually between 6 and 8 h per day in an adult is associated with harm and long term health consequences. In terms of prevention, consistently sleeping 6 to 8 h per night may therefore be optimal for health. However, sleeping 9 h or more per night may represent a useful diagnostic tool for detecting subclinical or undiagnosed co-morbidity. People reporting consistently sleeping 5 hours or less per night should be regarded as a higher risk group for all-cause mortality. A 12% increased risk of death in short sleepers, if causally related, would equate to over 6.3 million attributable deaths in the UK in people over 16 years of age and over 25 million attributable deaths in the US in people over the age of 20 years. Future studies should be designed to answer the question whether sleep duration is a cause or simply a marker of ill-health. Indirect evidence seems to suggest to date that sustained sleep deprivation may trigger biological mechanisms contributing to the deterioration of health status, whereas long duration of sleep may be a powerful additional marker of ill-health.

Duration of sleep should be regarded as an additional behavioral risk factor or risk marker heavily determined by the environment and possibly amenable to modification through both education and counselling as well as through measures of public health. The latter would aim at favorable modifications of physical and working environments to allow sufficient sleep and avoid habitual and sustained sleep deprivation.

ACKNOWLEDGMENTS

We thank Mrs. Patricia McCabe for helping with the systematic searches. This study was supported, in part, by an EC Grant (FP7-HEALTH- 2007-201550).

Authors' contribution: FPC conceived the study aims and design, contributed to the systematic review and data extraction, performed the analysis, interpreted the results, and drafted the manuscript. LD, PS, and MAM contributed to the data extraction, interpretation of results, and to the revision of the manuscript.

DISCLOSURE STATEMENT

This was not an industry supported study. The authors have indicated no financial conflicts of interest.

REFERENCES

1. Akerstedt T, Nilsson PM. Sleep as restitution: an introduction. *J Intern Med* 2003;254:6-12.
2. Bliwise DL. Historical change in the report of daytime fatigue. *Sleep* 1996;19:462-4.
3. Spiegel K, Tasali E, Leproult R, Van Cauter E. Effects of poor and short sleep on glucose metabolism and obesity risk. *Nat Rev Endocrinol* 2009;5:253-61.
4. Knutson KL, Spiegel K, Penev P, Van Cauter E. The metabolic consequences of sleep deprivation. *Sleep Med Rev* 2007;11:163-78.
5. Miller MA, Cappuccio FP. Inflammation, sleep, obesity and cardiovascular disease. *Curr Vasc Pharmacol* 2007;5:93-102.
6. Ferrie JE, Shipley MJ, Cappuccio FP, et al. A prospective study of change in sleep duration: associations with mortality in the Whitehall II cohort. *Sleep* 2007;30:1659-66.
7. Kripke DF, Garfinkel L, Wingard DL, Klauber MR, Marler MR. Mortality associated with sleep duration and insomnia. *Arch Gen Psychiatry* 2002;59:131-6.
8. Meisinger C, Heier M, Lowel H, Schneider A, Doring A. Sleep duration and sleep complaints and risk of myocardial infarction in middle-aged men and women from the general population: the MONICA/KORA Augsburg Cohort Study. *Sleep* 2007;30:1121-7.

9. Ikehara S, Iso H, Date C, et al. Association of sleep duration with mortality from cardiovascular disease and other causes for Japanese men and women: the JACC study. *Sleep* 2009;32:295-301.
10. Stone KL, Ewing SK, Ancoli-Israel S, et al. Self-reported sleep and nap habits and risk of mortality in a large cohort of older women. *J Am Geriatr Soc* 2009;57:604-11.
11. Cappuccio FP, D'Elia L, Strazzullo P, Miller MA. Quantity and quality of sleep and incidence of type 2 diabetes: a systematic review and meta-analysis. *Diabetes Care* 2010;33:414-420.
12. Gangwisch JE, Heymsfield SB, Boden-Albala B, et al. Short sleep duration as a risk factor for hypertension: analyses of the first National Health and Nutrition Examination Survey. *Hypertension* 2006;47:833-9.
13. Cappuccio FP, Stranges S, Kandala N-B, et al. Gender-specific associations of short sleep duration with prevalent and incident hypertension. The Whitehall II Study. *Hypertension* 2007;50:694-701.
14. Bliwise DL. Sleep-related respiratory disturbances. *J Gerontol* 1984;39:255.
15. Cappuccio FP, Taggart FM, Kandala N-B, et al. Meta-analysis of short sleep duration and obesity in children, adolescents and adults. *Sleep* 2008;31:619-26.
16. Stranges S, Cappuccio FP, Kandala N-B, et al. Cross-sectional versus Prospective associations of sleep duration with changes in relative weight and body fat distribution: The Whitehall II Study. *Am J Epidemiol* 2007;167:321-9.
17. Steptoe A, Peacey V, Wardle J. Sleep duration and health in young adults. *Arch Intern Med* 2006;166:1689-92.
18. Knutson KL, Turek FW. The U-shaped association between sleep and health: the 2 peaks do not mean the same thing. *Sleep* 2006;29:878-79.
19. Mallon L, Broman JE, Hetta J. Sleep complaints predict coronary artery disease mortality in males: a 12-year follow-up study of a middle-aged Swedish population. *J Intern Med* 2002;251:207-16.
20. Patel SR, Ayas NT, Malhotra MR, et al. A prospective study of sleep duration and mortality risk in women. *Sleep* 2004;27:440-4.
21. Lan TY, Lan TH, Wen CP, Lin YH, Chuang YL. Nighttime sleep, Chinese afternoon nap, and mortality in the elderly. *Sleep* 2007;30:1105-10.
22. Gangwisch JE, Heymsfield SB, Boden-Albala B, et al. Sleep duration associated with mortality in elderly, but not middle-aged, adults in a large US sample. *Sleep* 2008;31:1087-96.
23. Tsubono Y, Fukao A, Hisamichi S. Health practices and mortality in a rural Japanese population. *Tohoku J Exp Med* 1993;171:339-48.
24. Heslop P, Smith GD, Metcalfe C, Macleod J, Hart C. Sleep duration and mortality: The effect of short or long sleep duration on cardiovascular and all-cause mortality in working men and women. *Sleep Med* 2002;3:305-14.
25. Amagai Y, Ishikawa S, Gotoh T, et al. Sleep duration and mortality in Japan: the Jichi Medical School Cohort Study. *J Epidemiol* 2004;14:124-8.
26. Hublin C, Partinen M, Koskenvuo M, Kaprio J. Sleep and mortality: a population-based 22-year follow-up study. *Sleep* 2007;30:1245-53.
27. Ruigomez A, Alonso J, Anto JM. Relationship of health behaviours to five-year mortality in an elderly cohort. *Age Ageing* 1995;24:113-9.
28. Kojima M, Wakai K, Kawamura T, et al. Sleep patterns and total mortality: a 12-year follow-up study in Japan. *J Epidemiol* 2000;10:87-93.
29. Gale C, Martyn C. Larks and owls and health, wealth, and wisdom. *BMJ* 1998;317:1675-7.
30. Burazeri G, Gofin J, Kark JD. Over 8 hours of sleep--marker of increased mortality in Mediterranean population: follow-up population study. *Croat Med J* 2003;44:193-8.
31. Downs SH, Black N. The feasibility of creating a checklist for the assessment of the methodological quality both of randomised and non-randomised studies of health care interventions. *J Epidemiol Community Health* 1998;52:377-84.
32. Higgins JP, Thompson SG, Deeks JJ, Altman DG. Measuring inconsistency in meta-analyses. *BMJ* 2003;327:557-60.
33. Egger M, Davey SG, Schneider M, Minder C. Bias in meta-analysis detected by a simple, graphical test. *BMJ* 1997;315:629-34.
34. Bax L, Yu LM, Ikeda N, Tsuruta H, Moons KG. Development and validation of MIX: comprehensive free software for meta-analysis of causal research data. *BMC Med Res Methodol* 2006;6:50.
35. Tamakoshi A, Ohno Y. Self-reported sleep duration as a predictor of all-cause mortality: results from the JACC study, Japan. *Sleep* 2004;27:51-4.
36. Belloc NB. Relationship of health practices and mortality. *Prev Med* 1973;2:67-81.
37. Wingard DL, Berkman LF, Brand RJ. A multivariate analysis of health-related practices: a nine-year mortality follow-up of the Alameda County Study. *Am J Epidemiol* 1982;116:765-75.
38. Kaplan GA, Seeman TE, Cohen RD, Knudsen LP, Guralnik J. Mortality among the elderly in the Alameda County Study: behavioral and demographic risk factors. *Am J Public Health* 1987;77:307-12.
39. Gallicchio L, Kalesan B. Sleep duration and mortality: a systematic review and meta-analysis. *J Sleep Res* 2009;18:148-58.
40. Signal TL, Gale J, Gander PH. Sleep measurement in flight crew: comparing actigraphic and subjective estimates to polysomnography. *Aviat Space Environ Med* 2005;76:1058-63.
41. Knutson KL, Van CE, Rathouz PJ, et al. Association between sleep and blood pressure in midlife: the CARDIA sleep study. *Arch Intern Med* 2009;169:1055-61.
42. Lauderdale DS, Knutson KL, Rathouz PJ, Yan LL, Hulley SB, Liu K. Cross-sectional and longitudinal associations between objectively measured sleep duration and body mass index: the CARDIA Sleep Study. *Am J Epidemiol* 2009;170:805-13.
43. Young T, Palta M, Dempsey J, Skatrud J, Weber S, Badr S. The occurrence of sleep-disordered breathing among middle-aged adults. *N Engl J Med* 1993;328:1230-5.
44. Duran J, Esnaola S, Rubio R, Iztueta A. Obstructive sleep apnea-hypopnea and related clinical features in a population-based sample of subjects aged 30 to 70 yr. *Am J Respir Crit Care Med* 2001;163:685-9.
45. Marin JM, Carrizo SJ, Vicente E, Agusti AG. Long-term cardiovascular outcomes in men with obstructive sleep apnoea-hypopnoea with or without treatment with continuous positive airway pressure: an observational study. *Lancet* 2005;365:1046-53.
46. Shankar A, Koh WP, Yuan JM, Lee HP, Yu MC. Sleep duration and coronary heart disease mortality among Chinese adults in Singapore: a population-based cohort study. *Am J Epidemiol* 2008;168:1367-73.
47. King CR, Knutson KL, Rathouz PJ, Sidney S, Liu K, Lauderdale DS. Short sleep duration and incident coronary artery calcification. *JAMA* 2008;300:2859-66.
48. Gottlieb DJ, Redline S, Nieto FJ, et al. Association of usual sleep duration with hypertension: The Sleep Heart Health Study. *Sleep* 2006;29:1009-14.
49. Gangwisch JE, Malaspina D, Boden-Albala B, Heymsfield SB. Inadequate sleep as a risk factor for obesity: analyses of the NHANES I. *Sleep* 2005;28:1289-96.
50. Patel SR, Malhotra A, White DP, Gottlieb DJ, Hu FB. Association between reduced sleep and weight gain in women. *Am J Epidemiol* 2006;164:947-54.
51. Patel SR, Hu FB. Short sleep duration and weight gain: a systematic review. *Obesity (Silver Spring)* 2008;16:643-653.
52. Kaneita Y, Uchiyama M, Yoshiike N, Ohida T. Associations of usual sleep duration with serum lipid and lipoprotein levels. *Sleep* 2008;31:645-52.
53. Stranges S, Dorn JM, Cappuccio FP, et al. A population-based study of short sleep duration and hypertension: the strongest association may be in pre-menopausal women. *Circulation* 2009;119:e309.
54. Stang A, Moebus S, Mohlenkamp S, Erbel R. Gender-specific associations of short sleep duration with prevalent hypertension. *Hypertension* 2008;51:e15-e16.
55. Suarez EL. Gender-specific associations between disturbed sleep and biomarkers of inflammation, coagulation and insulin resistance. *Brain Behav Immun* 2008;22:29-35.
56. Spiegel K, Tasali E, Penev P, Van Cauter E. Sleep curtailment in healthy young men is associated with decreased leptin levels, elevated ghrelin levels, and increased hunger and appetite. *Ann Intern Med* 2004;141:846-50.
57. Taheri S, Lin L, Austin D, Young T, Mignot E. Short sleep duration is associated with reduced leptin, elevated ghrelin, and increased body mass index. *PLoS Med* 2004;1:e62.
58. Spiegel K, Knutson K, Leproult R, Tasali E, Van Cauter E. Sleep loss: a novel risk factor for insulin resistance and Type 2 diabetes. *J Appl Physiol* 2005;99:2008-19.
59. Copinschi G. Metabolic and endocrine effects of sleep deprivation. *Essent Psychopharmacol* 2005;6:341-7.
60. Stranges S, Dorn JM, Shipley MJ, et al. Correlates of short and long sleep duration: a cross-cultural comparison between the United Kingdom and the United States: the Whitehall II Study and the Western New York Health Study. *Am J Epidemiol* 2008;168:1353-64.