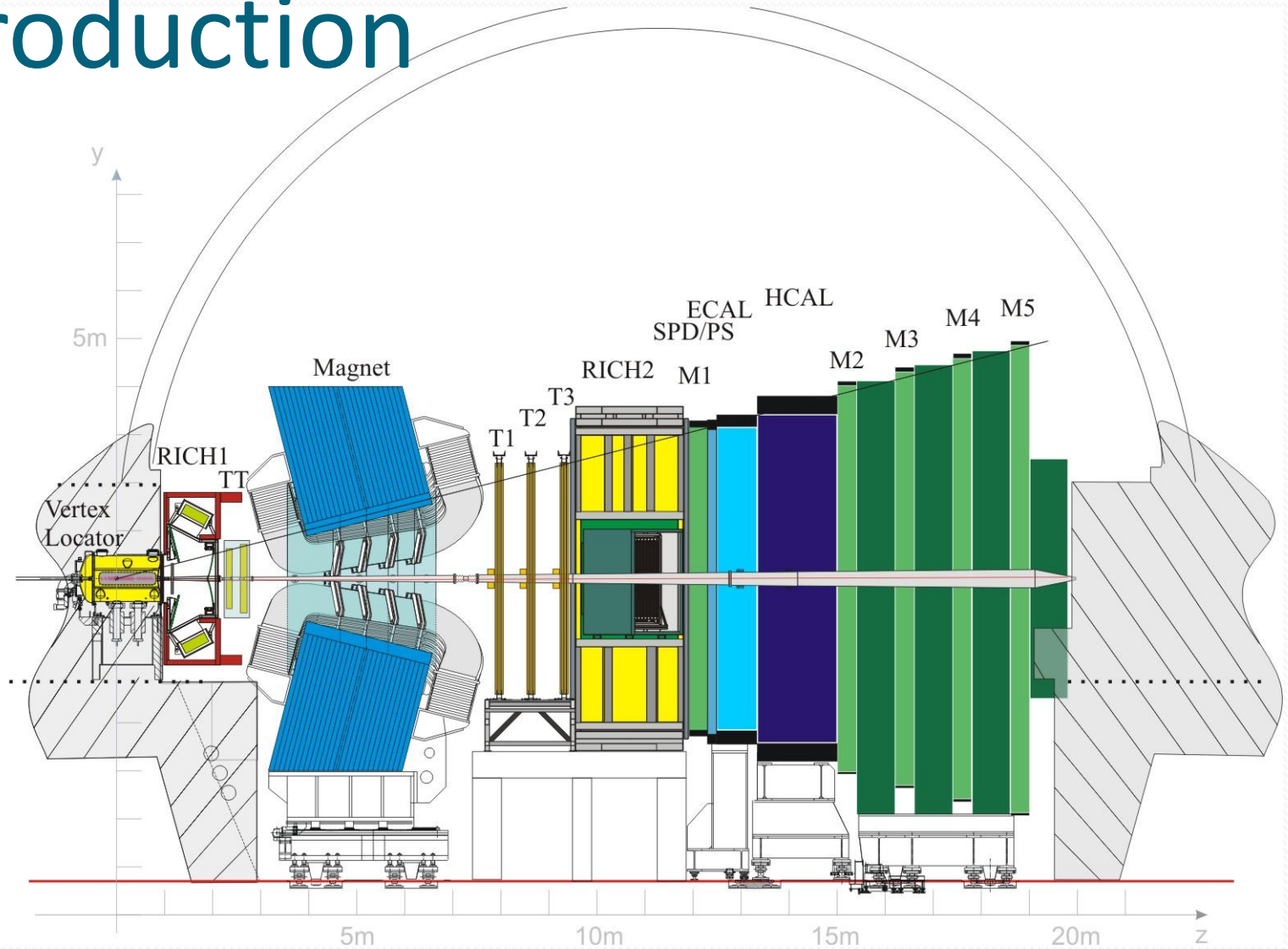


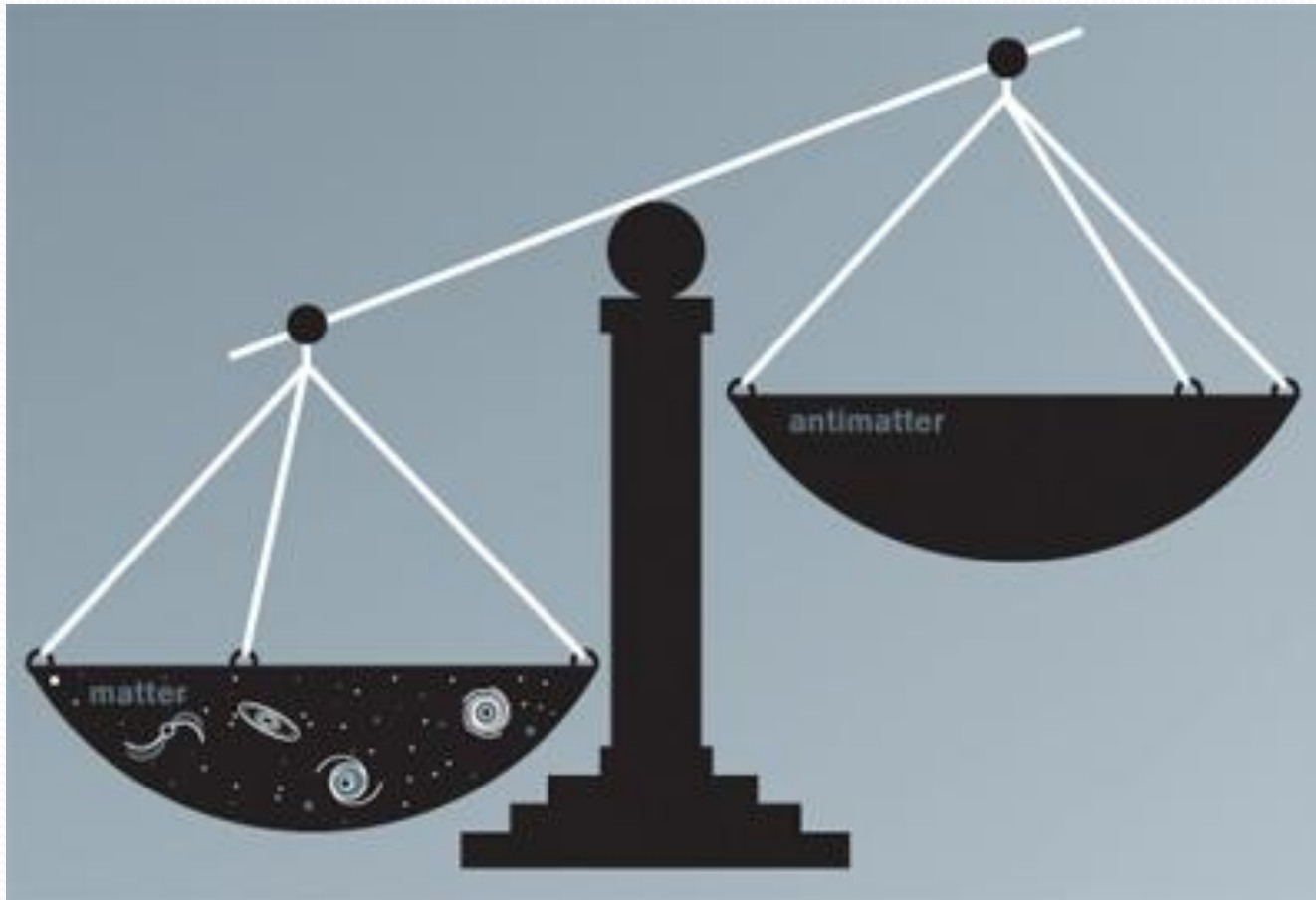
LHCb

Analysing the Detector

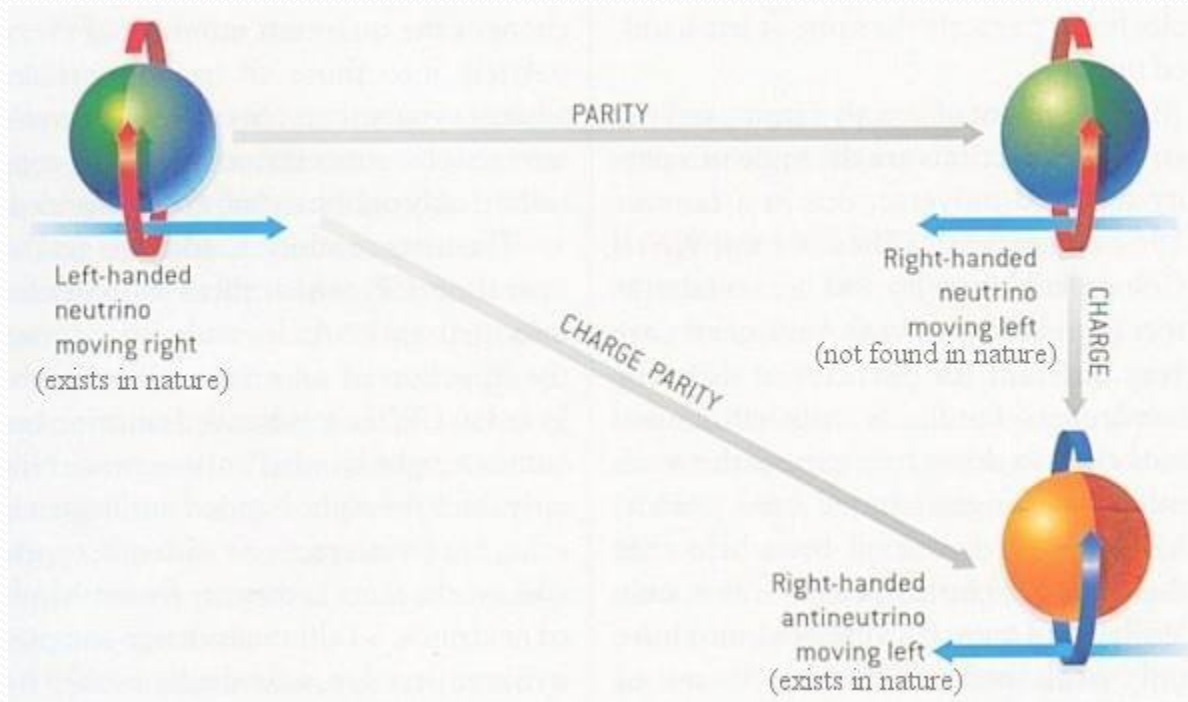
Introduction



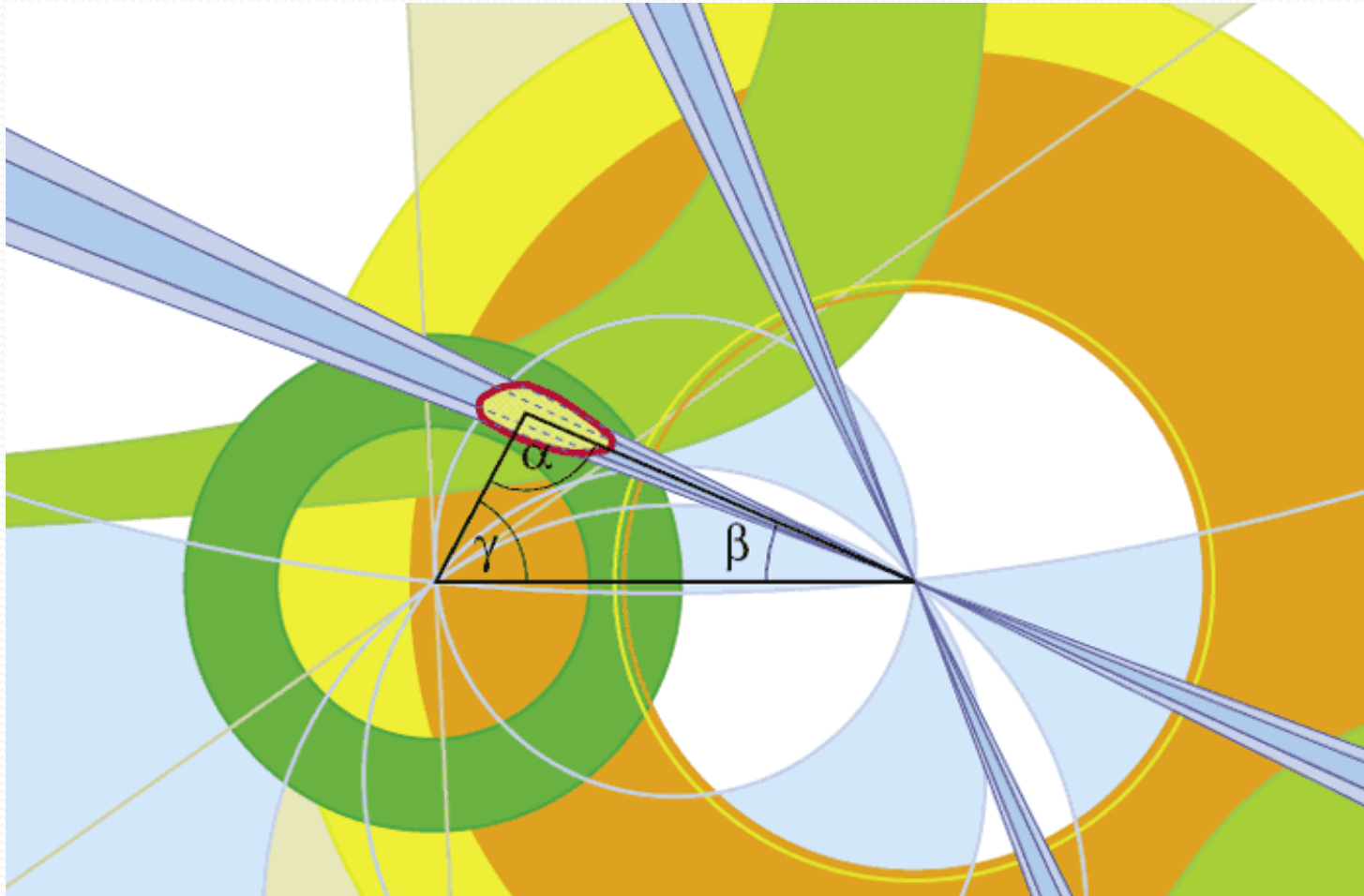
Baryogenesis



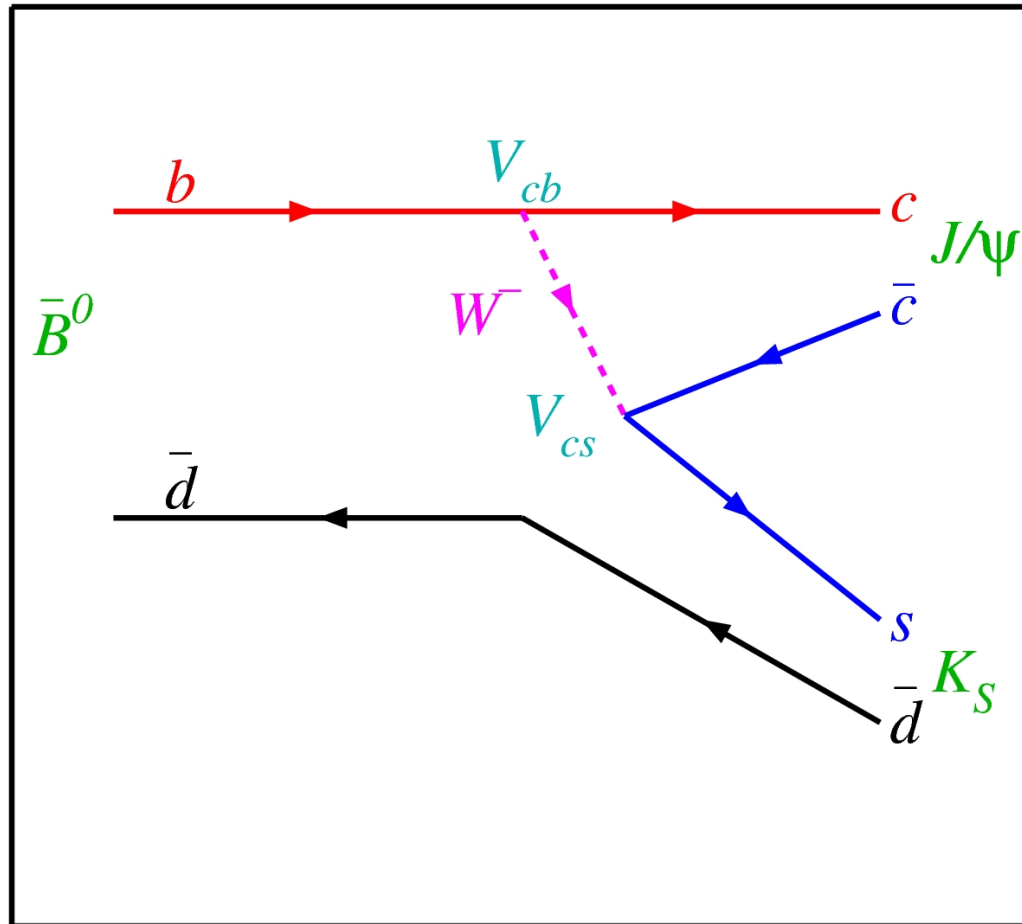
CP Violation



CKM Unitarity Triangle



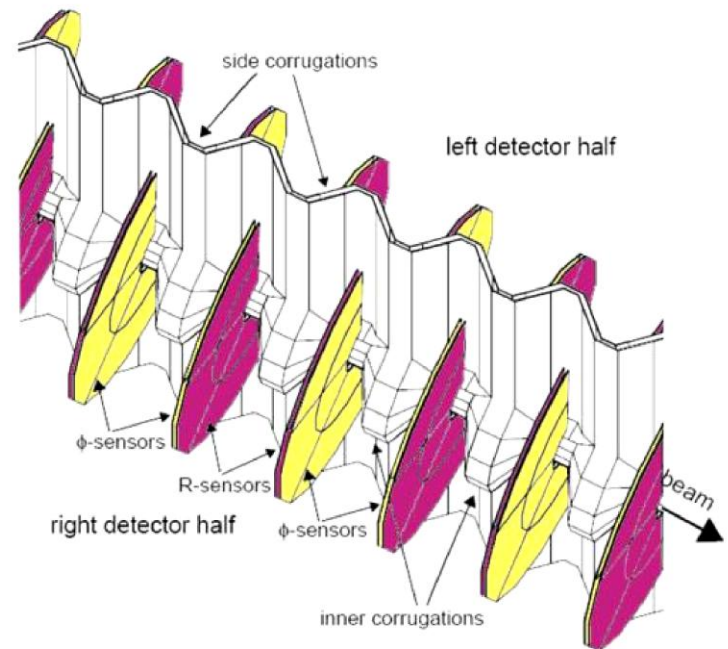
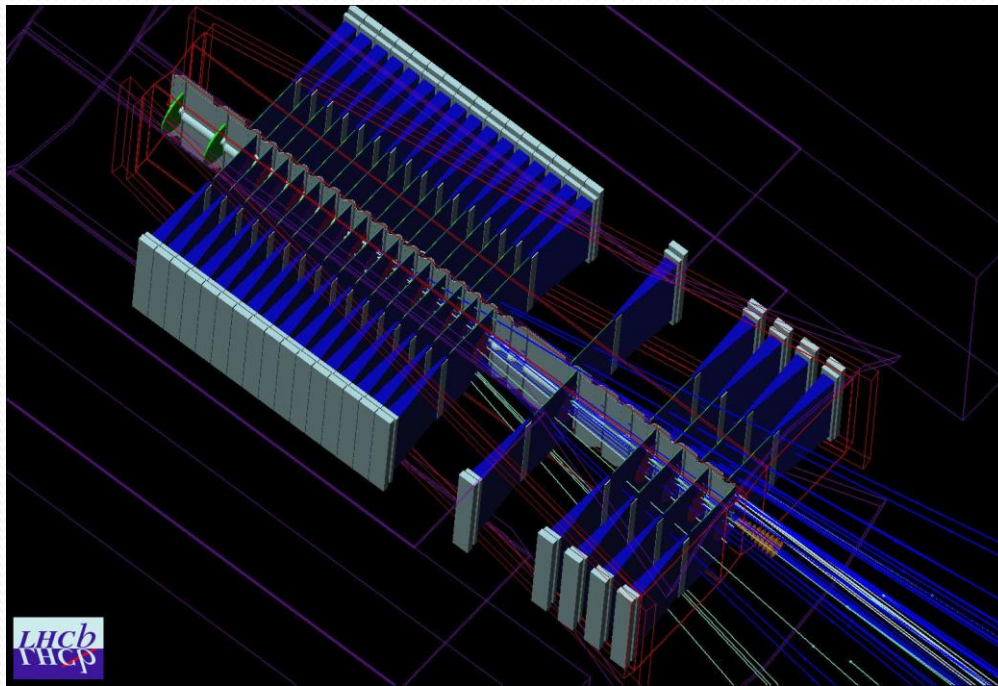
“Golden Mode”



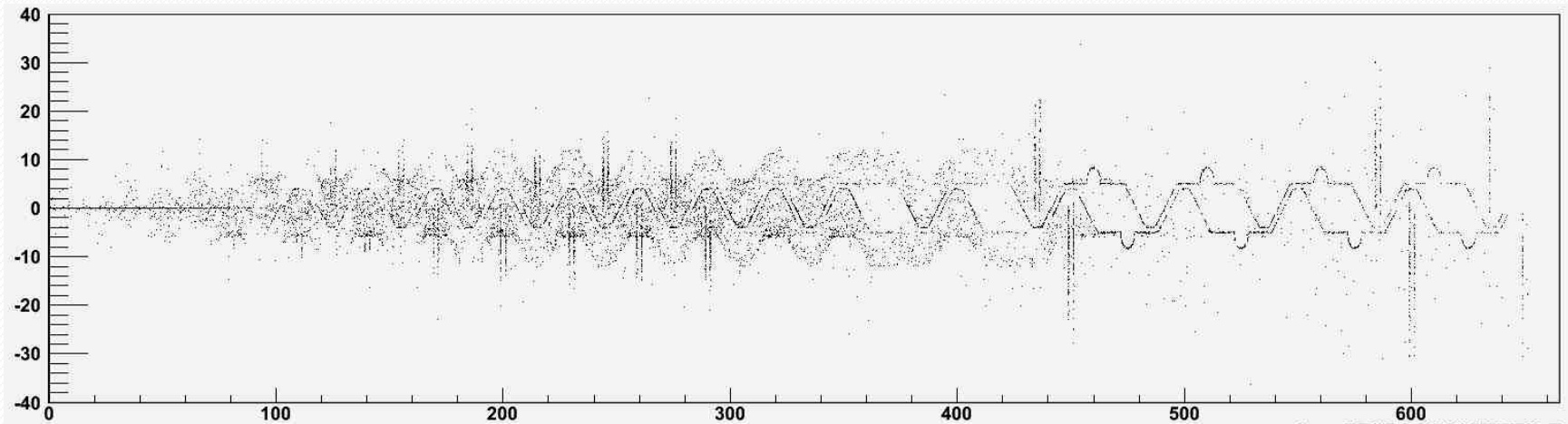
Amending the Standard Model



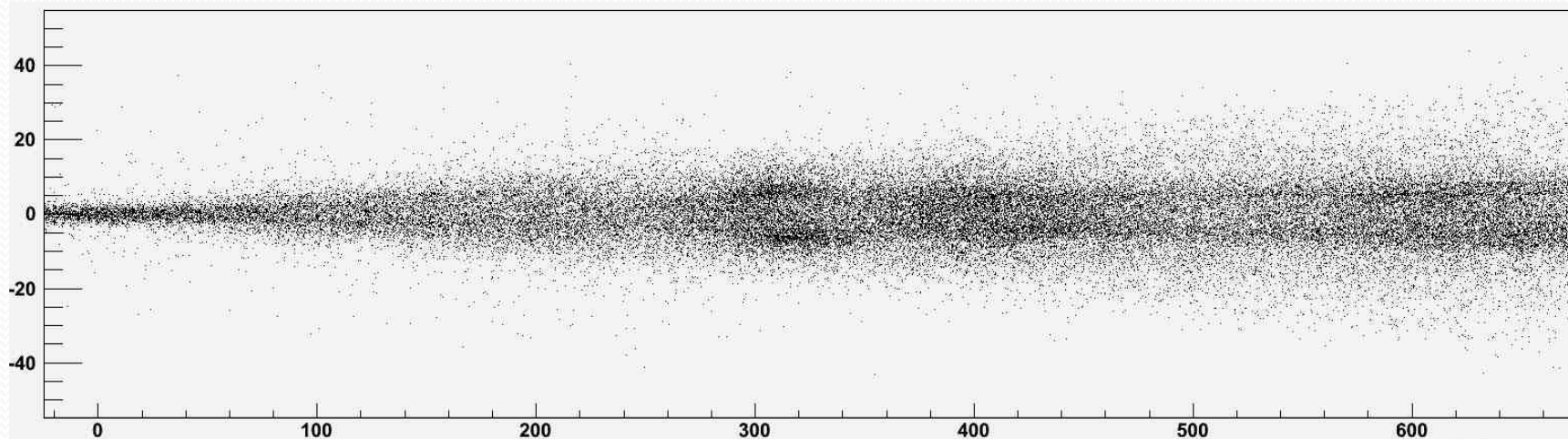
The Vertex Locator (VELO)



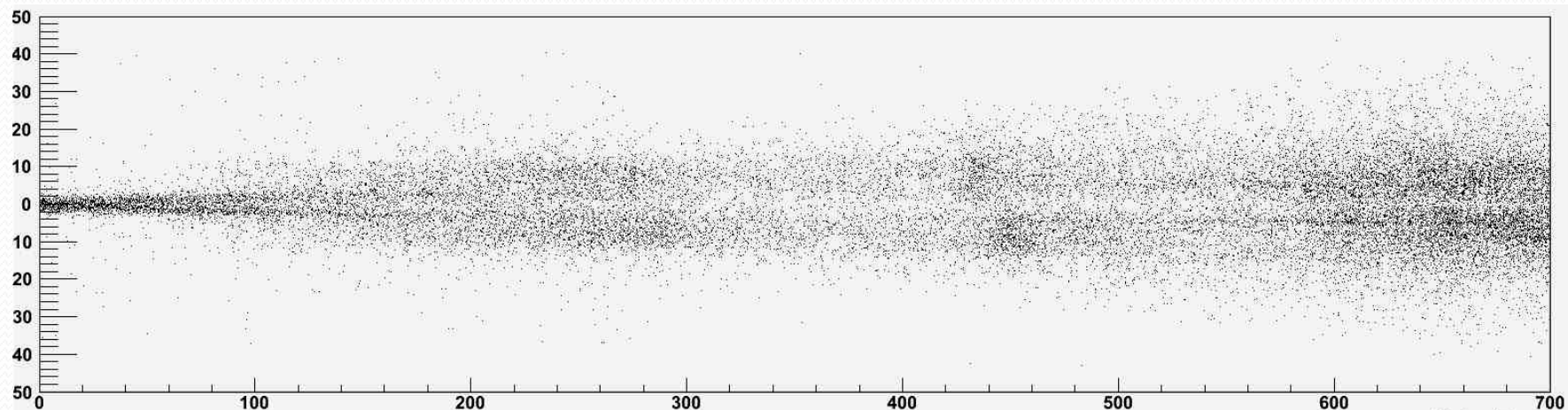
Monte Carlo Truth Data



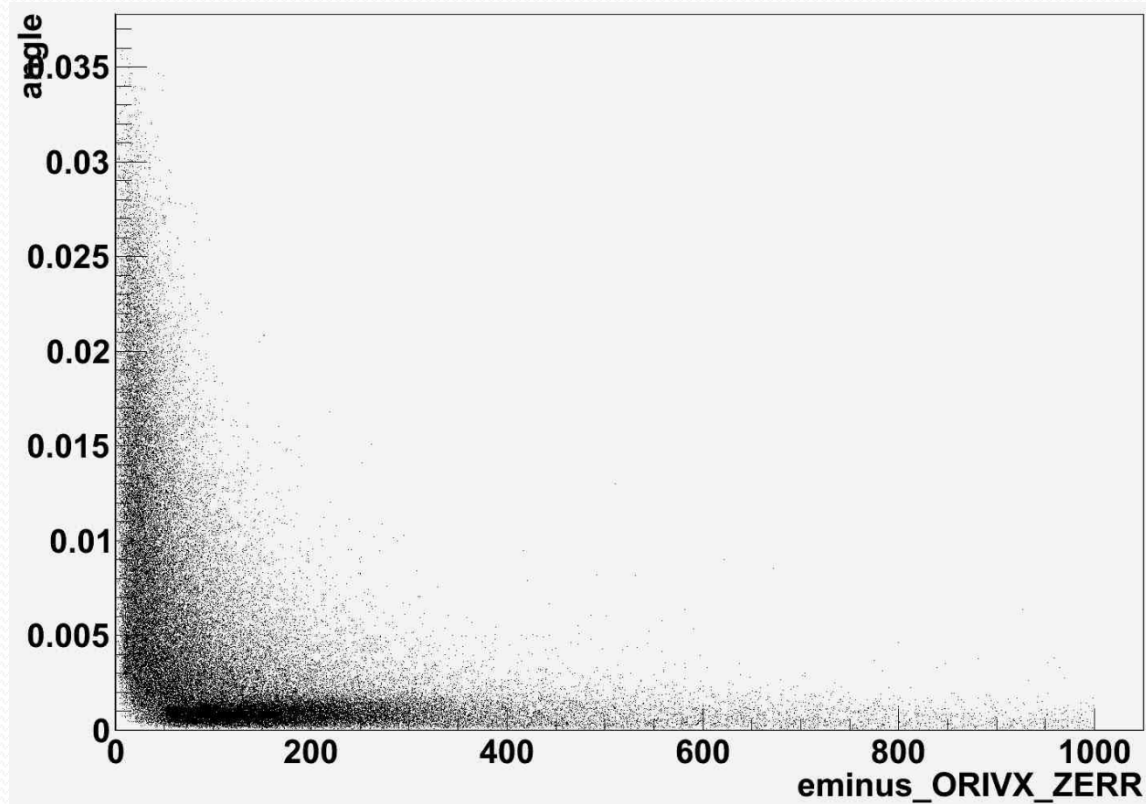
Simulated data



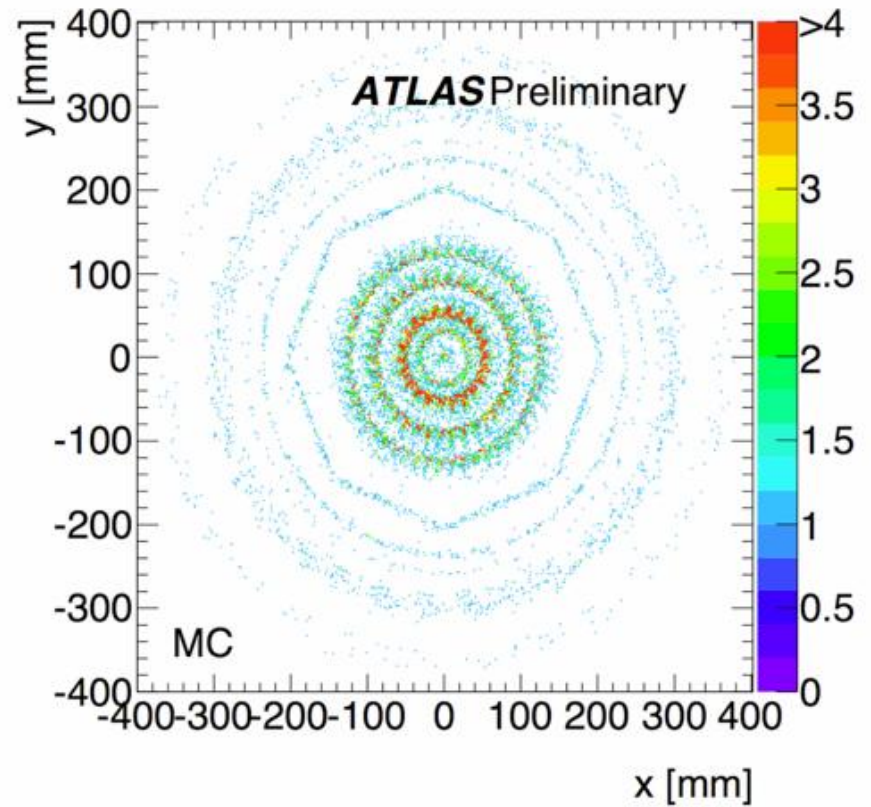
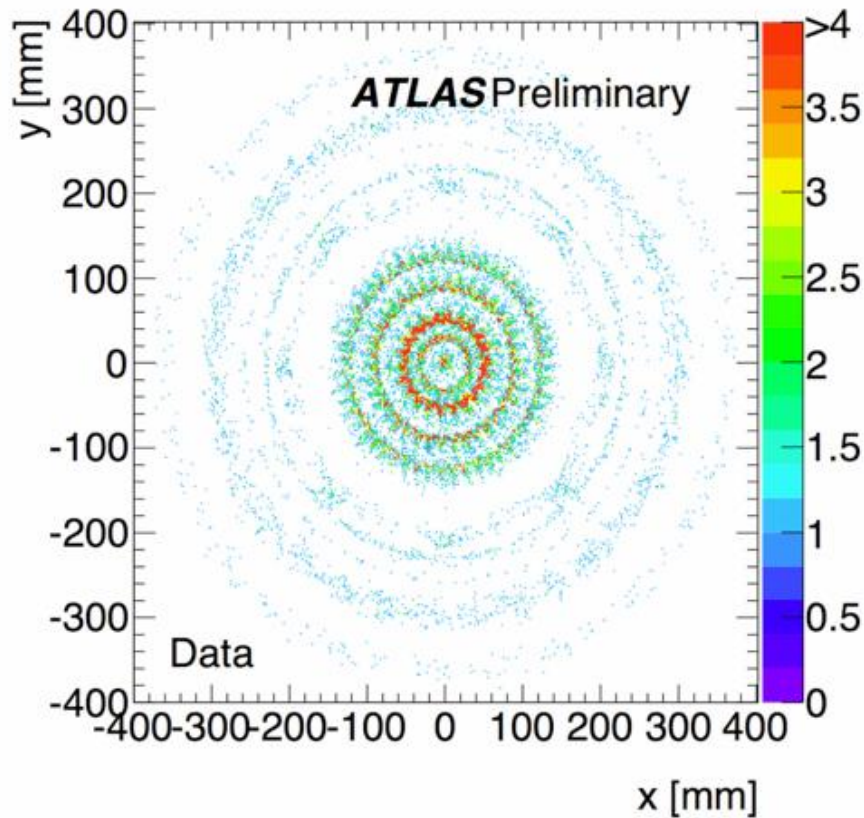
Real Data



Error related to angle between detected particles.

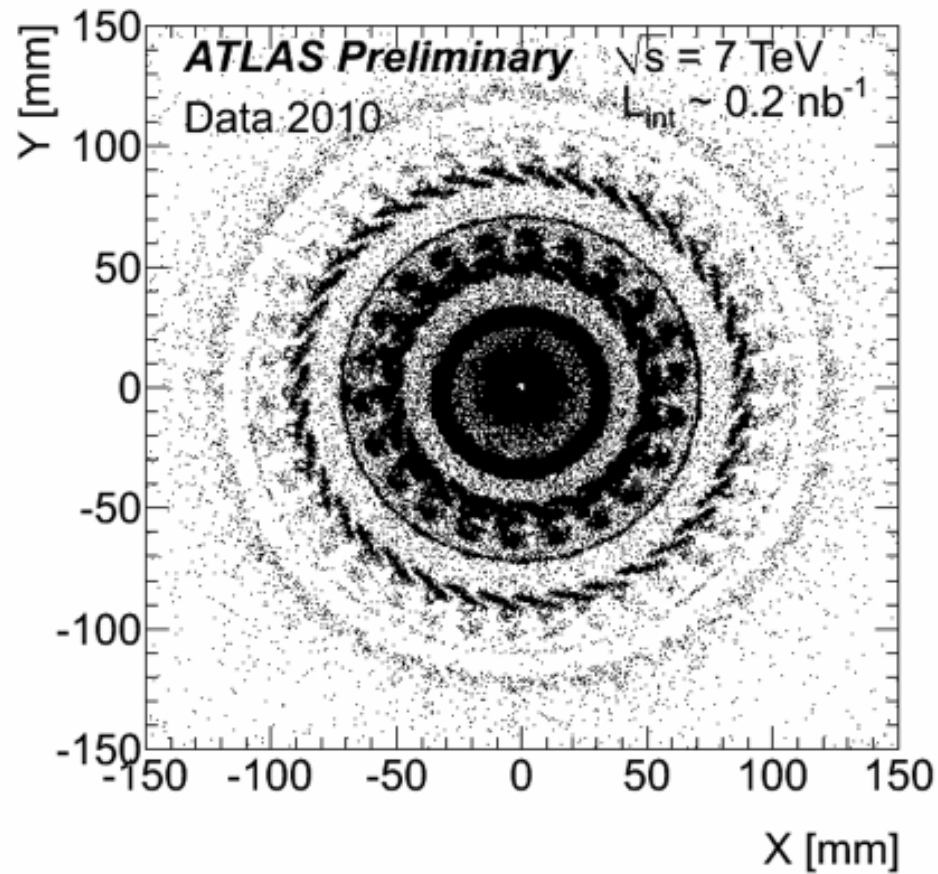


Same idea in ATLAS detector



Images from ATLAS collaboration presented at ICHEP, Paris, July 22nd 2010.

Hadronic interactions in ATLAS



What now then?

