



Postgraduate Induction

Elizabeth Stanway, Director of Graduate Studies

A1.18, Milburn House, e.r.stanway@warwick.ac.uk

Rosalind Johnstone , Postgraduate Co-ordinator

P5.22, R.Johnstone@warwick.ac.uk

PhysicsPG@warwick.ac.uk



PG induction events

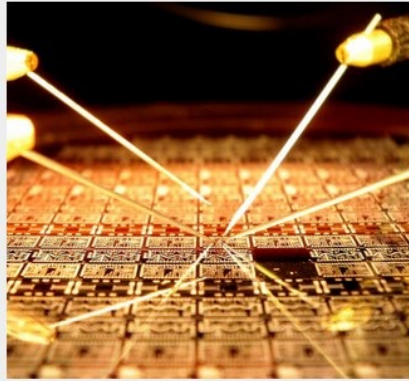
- **Tuesday – Welcome and Induction**

- 1.00pm: Welcome from DGS & HoD.
- 1.10pm: Welcome from Postgraduate Committee and current students
- 1.20pm: Outreach.
- 1.30pm: Induction for all students.
- 2.00pm: Short break
- 2.20pm: SCRTP overview of scientific computing.
- 2.30pm: Health & Safety, run by Stephanie Brown
- 3.00pm: Wellbeing session
- 4.00pm: Social Event on Physics Concourse

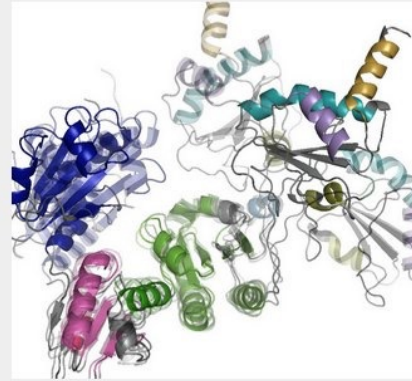
- **Wednesday**

- 09.30-10.15am – Photos taken of new students, Physics common room, P564
- 12noon-3.00pm – **Teaching, B2.04/5, Physics Concourse**

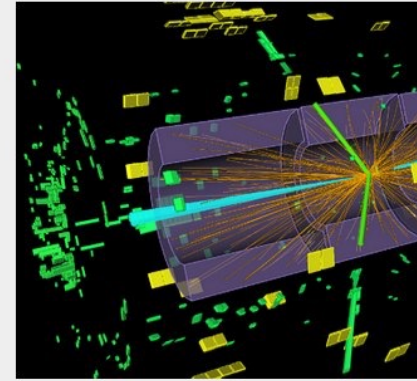
Research at Warwick Physics



[Condensed Matter Physics](#)



[Theoretical Physics](#)



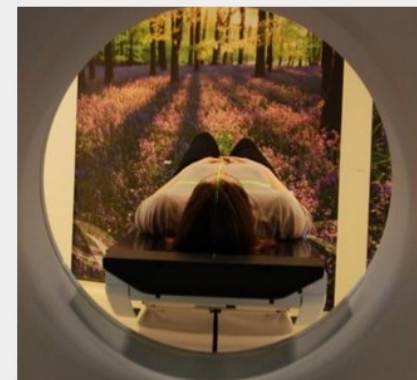
[Elementary Particle Physics](#)



[Astronomy & Astrophysics](#)



[Centre for Fusion, Space & Astrophysics](#)



[Medical Physics](#)



Overview of PhD course

Stage:	<u>PhD Year 1</u>	<u>PhD Year 2</u>	<u>PhD Year 3 & PhD Year 4</u>	<u>MSc By Research</u>
Activities:	<ul style="list-style-type: none">• Research• Physics Graduate School• Doctoral Skills• Teaching	<ul style="list-style-type: none">• Research• Physics Graduate School• Doctoral Skills• Teaching	<ul style="list-style-type: none">• Research• Thesis writing, submission, viva.• Doctoral Skills• Teaching	<ul style="list-style-type: none">• Research• Thesis writing, submission and assessment.



Expected Commitment

All students are entitled to expect a supportive environment and a sensible work-life balance. While many projects will require occasional out-of-hours work or intensive efforts ahead of deadlines, these should not be considered the expected norm.

Having said that, students also have a responsibility to commit to academic work and put in an amount of effort commensurate with standard office hours in an average week.



Research: Supervision

Daily supervision:

- Supervisor [plus any co-supervisor(s)]
- Research/technical staff; other postgraduates, postdocs

Progress monitoring:

- Feedback supervisor
- Director of Graduate Studies



Degree requirements: PhD

- Original research suitable for publication in multiple journal articles or communications
- “A substantial original contribution to knowledge, which is, in principle, worthy of publication. The thesis shall be clearly and concisely written and well argued and shall show satisfactory knowledge of both primary and secondary sources. In addition, it shall contain a full bibliography, and, where appropriate, a description of methods and techniques used in the research.”
- Attend seminars and colloquia
- Physics Graduate School
- Doctoral Skills: Personal Development & Training



Degree requirements: MSc by Research

- Original research suitable for publication in a scientific journal:
“A thesis submitted in fulfilment of the requirements of a degree of MSc by Research shall be clear and concisely written, show evidence of originality of knowledge and in interpretation and shall be also judged on its scholarly presentation. In addition, it shall contain a full bibliography.”
- Attend seminars and colloquia
- Graduate-level physics: optional courses
- Personal development and training: optional courses



Research: Progress Monitoring

Key Checkpoints:

- **1 Month** Research Outline (MSc and PhD)
- **3 Month** Progress Report (MSc)
- **6 Month** Progress Report (PhD)
Progress Update (MSc)

Should be discussed with supervisor and submitted to feedback supervisor by deadline on webpage

May: Progress monitoring meetings with feedback supervisor and DGS
Poster assessment exercise (PhD)



Research: Progress Monitoring

As research students you'll find some weeks crawling while others fly by!

Some advice:

- Keep clear records of what you're doing
- Make the most of the departmental environment
- Agree intermediate goals, targets and objectives as you go along
- Read research literature regularly, and take notes
- Evaluate your own progress regularly and be proactive in addressing issues



Physics Graduate School

- Graduate-level physics courses
- 6 graduate credits, over first 2 years of PhD
- Optional for MSc by Research students
- Courses offered by:
 - Midland Physics Alliance Graduate School (MPAGS)
 - Graduate modules taught at Warwick by Physics, Chemistry, Maths, Engineering, Computer Science, Centre for Scientific Computing, Life Sciences etc.
 - Centres for Doctoral Training (e.g. Heterogeneous Systems, Diamond)
 - External courses



Physics Graduate School – more details

- See <https://warwick.ac.uk/fac/sci/physics/current/postgraduate/pgs>
- Students must **self-certify completion** of modules and keep their own records
- MPAGS website: <https://warwick.ac.uk/fac/sci/physics/mpags>



Physics Graduate School – more details

- 1 MPAGS course = 1 graduate credit
- If choosing other taught Warwick modules check the conversion from the module's "CATS" number to the graduate credits, via our web page
<https://warwick.ac.uk/fac/sci/physics/current/postgraduate/pgs>
- See web page also for details on how to find and sign up for modules
- Examples of external courses: conferences with tutorials; summer/winter schools – need confirmation from DGS



Doctoral Skills: Personal Development and Training

- Develop your skills as a researcher
- Enhance your transferable skills
- Booking and monitoring system: SkillsForge
- Optional enrolment on the Postgraduate Certificate in Transferable Skills in Science (PGCTSS) for additional qualification.

Doctoral Skills 1

<https://skillsforge.warwick.ac.uk/>

Print Page | Mr Test Student | Sign Out

WARWICK
SkillsForge

Home DNA Professional Development ▾ Doctoral Skills Modules ▾ Help

Doctoral Skills Modules

There are Departments and Centres for Doctoral Training. Please choose one to opt in. If you are unsure if you come under a Department or a Centre for Doctoral Training please contact your Departmental Administrator or transferable.skills@warwick.ac.uk.

DS Module 1

Opt In ▾

DS Module 2

Opt In ▾

DS Module 3

Opt In ▾

PGR Development Enquiries:
Email: graduateschool@warwick.ac.uk

Doctoral Skills 1

<https://skillsforge.warwick.ac.uk/>

Print Page | Mr Test Student | Sign Out

WARWICK
SkillsForge

Home DNA Professional Development ▾ Doctoral Skills Modules ▾ Help

Doctoral Skills Modules

There are Departments and Centres for Doctoral Training. Please choose one to opt in. If you are unsure if you come under a Department or a Centre for Doctoral Training please contact your Departmental Administrator or transferable.skills@warwick.ac.uk.

DS Module 1

Opt In ▾

- [Chemistry](#)
- [Complexity CDT](#)
- [Computer Science](#)
- [Diamond CDT](#)
- [HetSys CDT](#)
- [MAS CDT](#)
- [MASDOC CDT](#)
- [Mathematics Institute](#)
- [MathSys CDT](#)
- [MOAC CDT](#)
- [Physics](#)
- [Psychology](#)
- [P School of Engineering](#)
- [E School of Life Sciences](#)

Doctoral Skills 1

<https://skillsforge.warwick.ac.uk/>

DS1A Starting Literature Review - 5 Research Papers	19 Sep 2019	4.5	● Research Focussed	Not started	Print
DS1B Research Plan (including budget) - Notes on follow-up and changes	19 Sep 2019	1.5	● Research Focussed	Not started	Print
DS1C Interim Research Report	19 Sep 2019	3.0	● Research Focussed	Not started	Print
DS1D End of Year Research Report	19 Sep 2019	4.5	● Research Focussed	Not started	Print
DS1E Year 1 Research Poster /or/ Summary of Seminar to a General Audience /or/ Teaching/Outreach	19 Sep 2019	1.6	● Research Focussed ● Conferencing & Networking	Not started	Print
DS1F Seminar Summaries (5)	19 Sep 2019	2.5	● Conferencing & Networking	Not started	Print
DS1G Poster Marking/ Postgraduate Presentation Assessment	19 Sep 2019	1.0	● Conferencing & Networking	Not started	Print
DS1H Meeting Planning	19 Sep 2019	1.6	● Conferencing & Networking ● Transferable Skills	Not started	Print
DS1I Web page	19 Sep 2019	1.6	● Conferencing & Networking ● Transferable Skills	Not started	Print

DS Module 2

Opt In ▾

Doctoral Skills 1

<https://skillsforge.warwick.ac.uk/>

DS Module 1 (Department of Chemistry)

Please consult the appropriate website for your from your Department

DSM Student [Save] [Close]

History: Latest

On finishing the task please take your work to your assessor (senior post-doctoral researcher or supervisor) for checking and signing off. Once the task has been signed off; please add your assessor's details into the boxes below, including a copy of your assessor's feedback using either the comments box or upload facility.

Assessment Date(s) 19 Sep 2019

Supporting documentation Quota used: 0.00MB out of 1000.00MB
[Choose a file to upload...](#)

Comments

Academic Reviewer Title

Title	Status
CH933 Academic Scientific...	Not started Print
CH934 Academic Scientific...	Not started Print
CH953 Teamworking in a...	Not started Print
DS1A Starting Literature F...	Not started Print
DS1B Research Plan (Incl...	Not started Print
DS1C Interim Research R...	Not started Print
DS1D End of Year Researc...	Not started Print
DS1E Year 1 Research Pos...	Not started Print
Teaching/Outreach	Not started Print
DS1F Seminar Summaries	Not started Print
DS1G Poster Marking/ Postgraduate Presentation Assessment	Not started Print

19 Sep 2019 1.0 Conferencing & Networking



Teaching

- Opportunities to help deliver undergraduate teaching:
 - Examples classes, lab demonstrators, marking lab reports
- Personal benefits: Develop your communications skills; confidence; knowledge of physics/maths; ability to understand how to break down and present a complex idea in an accessible way.
- Employability benefits: Great for teaching/academic roles; demonstrable role of responsibility and management.
- Training from the department (Wednesday) and wider courses via SkillsForge.
- Can work towards Accreditation as an Associate of the Higher Education Academy or the PGCTSS



Time Management

Some students find it hard to balance research with doctoral skills and teaching:

- Doctoral skills are crucial for employability and to develop research technique as well as transferable skills, but they should not dominate your time.
- Doctoral skills submissions should evaluate and demonstrate your progress through the course but not impede it.
- The length of time required for each task will vary, but in general should be of order hours, rather than days or weeks.
- Consider whether something you're already doing for your research can be used for doctoral skills (or vice versa), rather than starting from scratch.



Seminars


- Departmental Colloquia, normally Wednesdays 4.30pm (fortnightly)
 - Can be on any topic in physics, important for background knowledge
- Research Group Seminars
 - Specific knowledge relevant to your project or field
- Post-graduate seminars, Thursdays at 5pm (optional)
 - Opportunity to practice talks, provide feedback to peers and learn about other activity in the department

Student Welfare and Peer Support

- Talk to fellow students
- PG SSLC: wellbeing rep; informal coffee group
- Talk to PG administrators
- Talk to me! (can mediate/advise on any actions to take)
- Talk to head of department
[Prof. Mark Newton]




Report & Support



Report + Support

Everyone at the University of Warwick, whether studying, working, or visiting, has the right to feel safe. Harassment of any kind is completely unacceptable, and our community is an environment where prejudice and socially unacceptable behaviour are never tolerated.



There are two ways you can tell us what happened

[Report anonymously](#) or [Speak to an advisor](#)

<https://reportandsupport.warwick.ac.uk>



Key action points for all students

- Finalise enrolment, IT services account, any paperwork.
- Research group specific admin (e.g. Centre for Scientific Computing account; request training and access for equipment).
- Discuss research project outline with supervisor, confirm reading list, identify training needs.
- Prepare **Project Outline** to be submitted in Week 4: research plan & training plan.
- Get familiar with the departmental PG web pages & Course Handbook
<https://warwick.ac.uk/fac/sci/physics/current/postgraduate/>
- Identify and enrol for relevant **Physics Graduate School** courses.
- Identify 1st year **Doctoral Skills** actions.



Health and Safety

It is important to discuss the health and safety implications of your research with your supervisor, and complete sensible risk assessments.

<https://warwick.ac.uk/fac/sci/physics/intranet/healthandsafety>



...and finally

Good luck, and enjoy your course!