

[View this email in your browser](#)



26 May 2022



Email contents to Catherine Johnstone c.j.johnstone@warwick.ac.uk

Psychology Bulletin

News



Congratulations to our PhD Prize winners announced at PGR Research Day!

Faculty Prize winners:

Dr Anita Lenneis (Thesis) | Dr Ahuti Das-Friebel (Impact)

Anita submitted her PhD thesis "Sleep Timing: Variability and Stability, Influences, and Outcomes" on 15 January 2021. Supervisors: Anu Realo and Sakari Lemola.

Ahuti submitted her PhD thesis "Sleep and Mental Wellbeing in Young People: The Role of Electronic Media Use and School Start Times" on 12th May 2021. Supervisors were Sakari Lemola and Dieter Wolke.

[Subscribe](#)[Past Issues](#)[Translate ▼](#)

Michael Hattersley | Aleksandra Krogulska

Hattersley, M., Brown, G. D. A., Michael, J., & Ludvig, E. A. (2022). Of tinfoil hats and thinking caps: Reasoning is more strongly related to implausible than plausible conspiracy beliefs. *Cognition*, 218, 104956. <https://doi.org/10.1016/j.cognition.2021.104956>. Published online on 20 November 2021.

Krogulska, A., Golik, K., Barzykowski, K., Cox, J., Jakubiak, A., & Maylor, E. A. (2021). Should I keep studying? Consequences of a decision to stop learning in young and older adults. *Psychology and Aging*, 36(2), 158–171. <https://doi.org/10.1037/pag0000594>



THE WAY AHEAD is driven by expert researchers who are exploring ways to create a better world for everyone.

The way ahead for children born preterm is to identify their future needs as early as possible says Professor Dieter Wolke



[Read more here](#)

PhD fellowship

Closing date: 10 June 2022

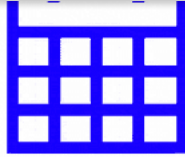
We are delighted to announce that one PhD Fellowship, supervised by [Dr Jesse Preston](#) and for students wishing to start a PhD in October 2022, has now become available.

Full details [here](#).

[Subscribe](#)

[Past Issues](#)

[Translate](#) ▼



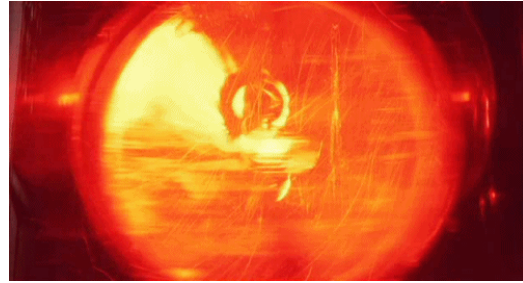
Want to check key departmental events and dates (including exam boards, away days and graduation)? Check out the Key Dates calendar:

[Calendar](#)

Emergency & Help

All Emergency calls on campus (fire, police, ambulance) x 22222 or 024765 22222 need to go through Community Safety.

(save to your MOBILE!)



[Learn More](#)



Subscribe

Past Issues

Translate

What inspires you to give back? On Warwick's Giving Day, you can choose to donate to an area that interests you, from supporting future Warwick students to backing lifesaving research.

Join us from 9am tomorrow bit.ly/3GgjaLL



youtube.com
A note from Professor Stuart Croft – Giving Day 2...
Professor Stuart Croft on how Giving Day is a powerful way for you, and your Warwick communit...

Recent student successes

Congratulations to our finalists, Olivia Worringham, Michael Okojie, and Rowchell Green, on their exceptional achievements!



THE UNIFORM PROJECT
Rowchell Green
University of Warwick



Source: <https://ingenuityimpact.org/2022-national-finalists/>

Olivia Worringham

received the highly commended award for her [2021 ASET Student Competition](#) entry. This award celebrates undergraduate students' placements and internships successes. Olivia's inspirational reflection on her placement year at Cygnet Healthcare demonstrates a fantastic learning and skill development journey.

Learn More

Rowchell Green

Rowchell has made it through to the 2022 Ingenuity National Finals. Rowchell is the creator and leader of a collaborative community initiative - The Uniform Project. This initiative "aims to empower those from disadvantaged backgrounds and instil confidence in students. By repurposing uniforms, the project will sustainably equip students with clothing, and reduce the environmental impacts of wastage."

Learn More



Source: <https://www.pallihill.com/pallihill-group-20>

Michael is one of this year's Pallihill Group's 20 Student Power List winners. This is a student-led competition that celebrates the impact of students and recent graduates in business, student societies, non-profits and the wider community.

Learn More



COMMUNITY SAFETY



Forgotten your keys/pass? No-one around? Call Community Safety:

internal extension x22083 or
024 7652 2083

Community Safety

EVENTS



Free ERC Accredited Basic Life Support training

7 June 2022 in person 9 am - 1 pm

As part of CVEP's Bystanders Save Lives campaign, we are delighted to be able to provide free [European Resuscitation Council](#) accredited Basic Life Support training to staff and students at Warwick delivered by Dr Chris Smith and Jade Wilmot and their team from Warwick Medical School.

No prior knowledge necessary.

There is usually a cost for attending this course but this course is being provided for free thanks to the generosity of Jade and Chris and their team, and the Warwick Medical School.



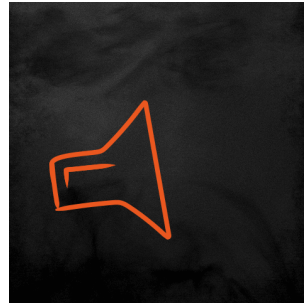
The training is in-person, intensive, interactive and delivers training on CPR and AED use to enable bystanders to respond effectively in an emergency situation. There is more information below.

If you are able to attend the course on the **7 June 2022 on campus between 9-1 pm, please complete [this booking form](#).**

Language and Learning group Seminars

Co-ordinator: [Marta Wesierska](#)

Bi-weekly programme on alternate weeks to Internal Seminar **12:00 Wednesdays**. Details published on Events calendar and TEAMS links circulated in advance of talks to Language and Learning Group members. If interested in joining the mailing list, contact [Marta](#) Wesierska.



The link between early meanings of object words and object-specific actions in toddlerhood

12:00 Wednesday 1 June

Hiromichi Hagihara from the International Research Center for Neurointelligence (WPI-IRCN), The University of Tokyo Institutes for Advanced Study

Abstract:

Nouns referring to objects are dominant in young children's vocabulary compared with verbs referring to actions. However, some researchers have argued that early object-words mean undifferentiated concepts in which both objects and their specific actions are fused (e.g., Werner & Kaplan, 1963). In this talk, I will present our work that experimentally investigated this theoretical hypothesis. Both the cross-sectional and longitudinal results showed that, unlike older toddlers, younger ones failed to understand object-word referents correctly when objects and object-specific actions were presented separately (e.g., "doing a meaningless action with shoes"), while both toddlers succeeded in understanding them when both objects and actions were matched (e.g., "putting shoes on"). This result suggested that early object-word meanings constitute the undifferentiated concepts of both objects and actions, and they subsequently differentiate into specific object categories

[Subscribe](#)

[Past Issues](#)

[Translate](#) ▼

have been working on. Our work will elucidate the uniqueness of young children's lexical development.

Coming soon:

12:00 15 June

Jiahao Yang

PGR workshop: Preparing for interviews



Tuesday 7 June 15:00 - 17:00 OC0.04

We will cover both general principles of how to give a good interview as well as specific issues that are likely to come up in academic job interviews. The session aims to be useful not only for people applying for academic jobs, but for all jobseekers likely to encounter an interview in the future.

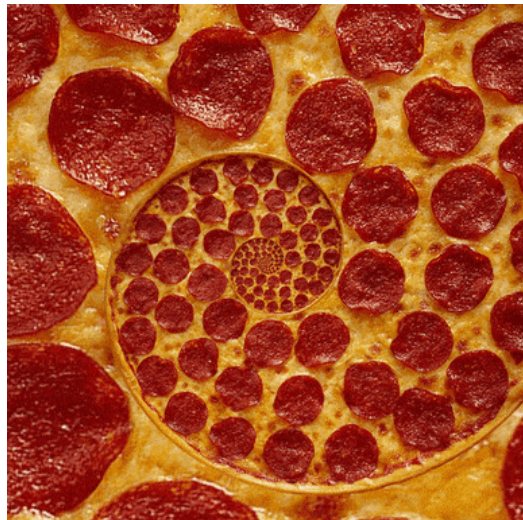
Sign up by 12:00 Tues 31 May

PGR Social

Tuesday 7 June: 17:30 Varsity

Suzanne Aussems and Sam Johnson will host a social event for PGRs - all welcome!

Learn More



We are delighted to share with you the registration for IROHMS Future Leaders Academy 2022. Please find links to both physical and virtual registration below, which include further details on each of the events.

[Subscribe](#)[Past Issues](#)[Translate ▼](#)

industrial and public sector engagement, and delivery of sustainable, impactful solutions we are recognised for. Over a period of three weeks, commencing 7th June 2022, guests will be invited to join six keynotes, industry talks, workshops, and tours of our improved laboratories: IROHMS Simulation Laboratory, Autonomous Systems and Robotics Laboratory, and Human-Machine Interaction Laboratory. Sessions have been arranged to offer a variety of sessions virtually or hosted at our School of Engineering, Computer Science and Informatics or the School of Psychology at Cardiff University.

Keynote 1: Dr Rob Deaves (Dyson UK)

7 June 2022, 15:30-16:30 BST

[Register: Physical attendance](#)

[Register: Virtual attendance](#)

Human-Robot Interaction Lab Tour

8 June 2022, 16:30-17:30 BST

[Register: Physical attendance](#)

Keynote 2: Professor George Huang (University of Hong Kong)

9 June 2022, 15:30-16:30 BST

[Register: Physical attendance](#)

[Register: Virtual attendance](#)

Keynote 3: Professor Anna Cox (UCL)

14 June 2022, 16:00-17:00 BST

[Register: Physical attendance](#)

[Register: Virtual attendance](#)

IROHMS Reception

14 June 2022, 18:00-20:00 BST

[Register: Physical attendance](#)

Industry Talk 1: Airbus UK

15 June 2022, 15:00-16:00 BST

[Register: Physical attendance](#)

[Register: Virtual attendance](#)

[Subscribe](#)[Past Issues](#)[Translate](#) ▼

15 June 2022, 16:30-17:30 BST

[Register: Physical attendance](#)

Keynote 4: Professor Ah-Hwee Tan (Singapore Management University)

16 June 2022, 15:30-16:30 BST

[Register: Physical attendance](#)

[Register: Virtual attendance](#)

Keynote 5: Professor Tony Pipe (UWE)

21 June 2022, 15:30-16:30 BST

[Register: Physical attendance](#)

[Register: Virtual attendance](#)

Industry Talk 2: Dr Alexander Chan

22 June 2022, 15:30-16:30 BST

[Register: Physical attendance](#)

[Register: Virtual attendance](#)

Autonomous Systems and Robotics Lab Tour

22 June 2022, 16:30-17:30 BST

[Register: Physical attendance](#)

Keynote 6: Professor Tom Gedeon (Curtin University)

23 June 2022, 15:30-16:30 BST

[Register: Physical attendance](#)

[Register: Virtual attendance](#)

Warwick Turing Fellow Hosted Catch Up Series 2022:

June 13

Warwick Data are hosting a series of catchups to showcase the latest developments in data science and artificial intelligence, with talks from Turing Fellows and leading researchers at The Alan Turing Institute. The event is also designed to facilitate connections between Warwick Turing Fellows and the broader University community. For more information, please use this [link](#)

Postdocs and Postgraduates



Warwick Postgraduate Teaching Community @WarwickPTC · 4h

We are pleased to release the CfP for the second issue of the Journal of Postgraduate Pedagogic Practice "Virtual, physical, or somewhere in between: Postgraduate pedagogies in the wake of the pandemic"

warwick.ac.uk/fac/cross_fac/...

CALL FOR ABSTRACTS

An invitation to submit to the Journal of PGR Pedagogic Practice (Issue 2)

*Theme: Virtual, physical, or somewhere in between:
Postgraduate pedagogies in the wake of the pandemic*

Abstract submission deadline: 4th of July 2022
Acceptance notification: 18th of July 2022
Workshop: Mid-August

FIND OUT MORE AT

https://warwick.ac.uk/fac/cross_fac/academic-development/pgteachers/ppp/

Planning to travel (staff and PGRs)?

Read [HR checklist for travel](#) noting restrictions on the type of accommodation that can be booked and through who (**KEY TRAVEL ADVISED**). Note requirement for Fin Regs approval via Steve McGladrigan **IN ADVANCE** of booking any non-standard accommodation:

- If you are booking accommodation that is being made available or is approved by the Institution / University being visited as the purpose of the business trip additional FinRegs approval is not required.
- Accommodation should be booked either direct with hotels or by using a reputable accommodation supplier with flexible cancellation policies and clarity on the H&S standards imposed. The University does **NOT** recommend using AirBnB properties –

1 Read the Overseas Business travel Insurance Policy:

<https://warwick.ac.uk/services/finance/insurance/keypolicies/traveloverseas/>

2 Email [Catherine Johnstone](#) to get registered as a booker for Key Travel being mindful of the temporary financial regulations relating to Key Travel here: **[Read about the temporary financial regulations in place to ease problems with Key Travel booking implemented 20 April 2022.](#)**

3 Complete Risk Assessment before booking travel to comply with business insurance requirements - DOWNLOAD from this page:

https://warwick.ac.uk/services/healthsafetywellbeing/guidance/travel_health

Email to HoD.Psychology@warwick.ac.uk to get HoDs approval.

4 Email [Anita Burrows](#) to raise a purchase order once quote has been obtained from Key Travel (working days Mon/Tues/Thurs).

5 Email [Steve McGladrigan](#) with any queries about what expenditure can be reclaimed BEFORE making any bookings.

CONFERENCE BOOKING GUIDANCE - Fin Regs

- Conference bookings (fees) do not require FinRegs approval
- If accommodation is included as part of the conference package, FinRegs approval is not required
- If preferential rates are offered for conference attendees at the conference hotel or a nearby hotel, this can also be booked without FinRegs approval
- If the conference is outside of Europe, or in Europe and travel costs will be more than £500, flights should be booked through Key Travel, per the University policy

All other FP16 and Travel Policy requirements apply, including the requirement for any staff and PGR students intending to undertake overseas business-related travel to seek departmental budget approval, complete a risk assessment and ensure that appropriate travel insurance is in place.

Also, as a reminder, the University does NOT recommend using AirBnB properties for accommodation bookings – approval from FinRegs and Health & Safety must be sought if AirBnB is being considered, and there are additional procedures and checklists that must be followed.

Programme is back for another term 🎉

warwick.ac.uk/accolade

If you're a postdoc @Warwick_Science @ArtsWarwick @Warwick_SocSci
join us as a Fellow to take part: warwick.ac.uk/fac/cross_fac/... #ecr
#postdoc #training #support



Warwick Doctoral College @DC_Warwick · 22h



Are you nervous about presenting your research at an academic conference, or are you already a seasoned speaker? We want to hear from you!

Join PGR Matters on 06 June to share your experiences, advice, and concerns with your peers.

Sign up here: bit.ly/3LuVMLn



Subscribe

Past Issues

Translate

COLLEGE

The Researcher Development Next Steps Careers Series starts next week. A blend of both in person & online events to support you, through your decision making for your career. Take a look at the programme & find out more about the sessions here: warwick.ac.uk/services/dc/pg...

Researcher Development Online

NextSteps Careers Series-
delivered over 9 weeks starting
on 30th May with a mix of in
person and online events.

Bookable on SkillsForge



Warwick Researcher Development and Research Exchange



Warwick Doctoral College @DC_Warwick · May 24

PGR Job Opportunity — We're looking for Project Consultation Officers for our project 'Defining, Measuring and Supporting Success for PGRs from Diverse Backgrounds'.

Find out more here and apply by 05 June: bit.ly/3wP6wAx

Job Opportunity
**PGR Project
Consultation
Officers**

11-week contract for
4h/week

Apply by 05 June!

ALT



[Subscribe](#)[Past Issues](#)[Translate](#) ▼

networking event for PGR students! Grasp this opportunity to make the most out of this Term 3!

Link to sign-up for the event:
warwick.ac.uk/services/libra...



[Nominate a researcher for the 2022 John Maddox Prize](#)

Forwarded by BPS. Please consider putting a colleague forward, and share the [nomination form](#) with your networks. If you have any questions or would like to informally discuss the criteria, please get in touch with me at johnmaddoxprize@senseaboutscience.org.



Deadline 16:00 30 May

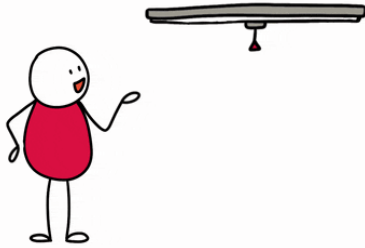
[Learn More](#)

Are you thinking about becoming a graduate teaching associate? Or are you a prospective teacher with unanswered questions? Join our friendly forum of PGRs for an honest discussion of teaching!

warwick.ac.uk/fac/cross_fac/...

Participate in research:

Student learning and student experience



PGRs - take part in a survey conducted by the Psychology departments at the University of Warwick and Birmingham City University to gather information about BAME students' learning and student experiences. All psychology students at the department can complete the survey regardless of their ethnicity.

Survey link


TEACHING

Reading lists



Reading Lists Rollover for 2022/23

The Library has now rolled over all published 2021/22 reading lists and created drafts for 2022/23. If your module will be running again next academic year, please ensure all lists are published and any changes made by 31 July. [See more information.](#)

in the Library collections 

Tell them what books you'd like to be purchased, for both study and leisure reading, to diversify and decolonise the collection: bit.ly/3MpdqkZ

[#MoreBooksYourBooks](#)



[Warwick Teacher Researcher Network](#)

Are you seeking opportunities to work with schools or would like to let schools know about the work you are doing? Are you interested in collaborating with teachers or school leaders on exciting and innovative projects? Learn more about the [Warwick Teacher Researcher Network](#), which aims to enhance research culture, drawing together Warwick academics and school-based colleagues who are interested in primary and secondary education research.

[Open call for WIHEA Fellowship](#)

The call for Warwick International Higher Education Academy Fellowship nominations is now open, providing an outstanding opportunity to engage with colleagues and students and develop new academic practices that will enhance the student experience. [Find out more and apply](#) by 15 June.

Bookable Moodle Support Sessions

The Digital Learning Environment (DLE) team is now offering a series of bookable one-to-one **Moodle Support Sessions**. These are intended to be short appointments to discuss users' needs and requirements so that we can advise on appropriate tools in Moodle for the activity they want to create. These sessions are not for reporting errors or issues which should still be submitted via the Help Desk. Appointments are available in the first instance between 11am and 1pm on Tuesdays, 1pm and 3pm on Thursdays and 10am and 12pm on Fridays. [Sign up to appointments with DLE staff via MS Bookings](#)



Warwick Celebrates

Class of 2020 and 2021

Warwick Celebrates

Psychology Postgraduates, including DClin

15:00 - 17:00 Sunday 10 July 2022

Psychology Undergraduates

15:00 - 17:00 Tuesday 12 July 2022



Degree Congregation: July 2022

Psychology 2022 UG Graduation

11:00 - 13:00 Tuesday 26 July 2022

[Learn More](#)

News for your students:

Subscribe	Past Issues		Translate ▼
-----------	-------------	--	-------------

research

Deadline: 27 May

Psychology, for a motivated undergraduate to join my lab starting from **July 4th**. The position is for **up to 12 hrs/week** (the actual number of hours will vary flexibly) till end of August 2022.

The position will involve recruiting and testing 4 year olds (in the BABYLAB/online). You will learn how to administer a standardised test assessing language ability and you will be trained in eye-tracking. Please email me at chiara.gambi@warwick.ac.uk for more details.

You can apply via UniTemps (**deadline 27/05/22**) here: <https://portal.unitemps.com/Search/JobDetails/26195922>. I am very happy to chat informally with anybody who might be interested. If you are keen, please get in touch and we can talk through any training needs you might have.

New PRSDS project

Deadline: Monday 30 May

Applications are invited for a new PRSDS project titled 'Children's and adolescents' interpersonal emotion regulation'. Deadline for applying: Monday 30th May 2022 at 5:00pm. For more information and how to apply, click here: [PRSDS 21 22 MG \(warwick.ac.uk\)](#). For more information about the programme, please visit this webpage: [Psychology Research Skills Development Scheme \(PRSDS\) \(warwick.ac.uk\)](#).

Contact: Gitit-Kadar Satat

Our Term 3 student survey will go live on Wednesday 1 June to evaluate the learning and teaching experience this year and to find out how and where we can improve further next year. We'll also be asking students about their experience of taking assessments this term. [See the questions, find out more](#), and from Monday 30 May, get resources to help you promote the survey.

Subscribe

Past Issues

Translate

It might be difficult to stay on top of your work without a formal timetable of lectures and seminars.

Learn useful time-management tips in this [@warwicklibrary #StudyBlog: bit.ly/3wCDm6f](#)

[#exams](#) [#studytips](#)



Careers Advice for students:

[Siobhan Qadir](#), Careers Adviser



Warwick Uni Student Opportunity @SO_Warwick · May 17

Promoting your research can increase the number of citations you receive and the overall impact of your research. What role can social media play? Read our latest [#WarwickCareersblog](#) post to find out



careersblog.warwick.ac.uk

Why researchers should use social media

Promoting your research can increase the number of citations you receive and the overall impact of your research. What role can social ...

STUDENT OPPORTUNITY

#GetConnected with employers at our Summer Careers Fair next month. They'll be on campus to meet you and chat about roles and opportunities. Look out for our fair guide dropping soon. #MySummerNetworking #GetHired ow.ly/6F8x50J3leg



Save the Date!

Summer Careers Fair
Tuesday 28 June 2022
Rootes Building - Panorama Suite



#MySummerNetworking #GetHired

Associate Programme and ask him anything. Mark your diary for 9th June, 2-3pm [#MySummerNetworking](#) [#GetConnected](#) [#GetHired](#) ow.ly/thst50Jb3cn



Warwick Uni Student Opportunity @SO_Warwick · 7h

Want to work for the UK's #1 Graduate Employer? Then join three current second-year Fast Streamers to discuss what you can expect when applying to the Civil Service Fast Stream. Book your place for 14th June now ow.ly/ZzSm50JhIOv

[#MySummerNetworking](#) [#GetConnected](#) [#GetHired](#)



Warwick Uni Student Opportunity @SO_Warwick · May 18

Careers Question of the Week! Book an appointment today ow.ly/1wMm50Jbbzv



Subscribe

Past Issues

Translate



Find out more about Psychology's Impact work here

[Psychology Impact Cases](#)



The Lifelong Effects of Premature Birth

Changing policy worldwide to support the development of preterm babies



Maximising the Value of Witness Evidence

Confronting the unreliability of the human memory



Improving Road Safety Education and Driver Training

Raising awareness of the need to pay attention on the road

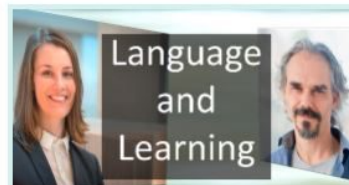
See the latest research being carried out within our research groups here:



Applying the core principles of cognitive psychology, we explore how people come to make the important decisions in their everyday lives.



Health and wellbeing across the lifespan, with an emphasis on translating research into clinical practice and health policy.



Cognitive factors involved in the successful mastery of language and learning, and applying the language research to the classroom.

Don't forget

[Subscribe](#)[Past Issues](#)[Translate](#) ▼

planning to submit a grant.

You can do so by contacting [Andrea Howard](#) directly. Alternatively, if it is for a grant that would bring more than £50k to Psychology, you can register your plans at the department site as these submissions are also sent to RIS.

[Register Grants here](#)

RELAUNCH OF INTERNATIONAL FUNDS

GLOBAL OPPORTUNITIES

- International Partnership Fund

STRATEGIC PARTNER FUNDS

- SJTU
- Monash Warwick Alliance
- EUTOPIA

www.warwick.ac.uk/global/partnerships/funding

Relaunch of International funds

Global opportunities

The [International Partnership Fund \(IPF\)](#) aims to strengthen or initiate exchange between Warwick academics and their counterparts from leading international universities or institutes. We especially welcome proposals with partners in our priority regions (Africa, China, Europe & North America).

Applications are made through an [online application form](#). The deadline for applications is **Sunday 10th July 2022**.

Strategic partnership opportunities

To complement our IPF scheme, we also have specific funds to encourage collaboration with most of our strategic partners. These grants are jointly evaluated and funded with our partners:

- The [SJTU-Warwick Joint Seed Fund](#) enables academics to work on projects jointly with colleagues from Shanghai Jiao Tong University (SJTU), China and provides funding for

The deadline for this call is **Sunday 10th July 2022**. All funding for successful awards must be defrayed by 31st July 2023.

- The [Monash Warwick Alliance](#) offers several funding schemes to encourage research, teaching, and professional staff, as well as students, to collaborate with their counterparts in Monash, Australia. These schemes have recently been reactivated and are now open.
- The [EUTOPIA Connected Research Communities](#) and the [Research Mobility Program](#) will allow you to establish links with colleagues in Vrije Universiteit Brussel, CY Cergy Paris University, University of Gothenburg, University of Ljubljana, Pompeu-Fabra University-Barcelona. The aims are to: support research visits across EUTOPIA partner universities, foster research collaborations, allow the sharing of expertise and infrastructures, and the development of joint research activities.

The EUTOPIA Connected Research Communities call closes on **Friday 10th June 2022**. Use this space to add more details about your brand, a customer quote, or to talk about important news.

[Learn More](#)

IMPACT

The Pro Vice Chancellor Research, Professor Caroline Meyer, on 5 April announced five new institutional funds totalling £2.8million, to drive the development of Warwick's research impact over the next three years.

Researchers will be able to apply for grants of between £3,000 and £50,000 for projects which create societal and economic impact from their findings.

New funding will be available to support researchers working in the areas of Engineering and Physical Sciences, Medical Sciences, Space Science, Biosciences, Arts and Humanities. The new funds will complement an existing [Impact Acceleration Account from ESRC](#) for the Social Sciences and a [Warwick Wellcome Trust Translational Partnership](#), which is driving the translation of research into improvements in human health.

The new awards include a £1.8m EPSRC Impact Acceleration Account, a £414K MRC IAA Confidence in Concept Award, and an additional £70K funding from STFC. UKRI have requested that we do not publicise our IAA awards externally at the current time, but internal calls can be launched shortly. We therefore ask that this communication is not shared beyond Warwick.

In addition to the UKRI awards, Professor Meyer has allocated funding to support a Biosciences Impact Fund and an Arts and Humanities Impact Fund. Both will run for three years beginning April. In addition, the University will extend our STFC Award for a further two years. Together the three funds represent a total University investment of £584,000.

For further information, please contact the relevant fund managers below:

- EPSRC IAA: [Grace Prewett](#)
- MRC IAA: [Kevin Marks](#)
- STFC and Space Science Funds: [Grace Prewett](#)
- Biosciences Impact Fund: Dr [Josh Cartwright](#)
- Arts and Humanities Impact Fund: [Emma Roberts](#)
- ESRC IAA: [Carolyn Silvester](#) and Dr [Helen Ackers](#)
- Warwick Wellcome Trust Translational Partnership: [Josh Cartwright](#)

Call for participants



Do you have chronic pain?

Volunteers are needed to take part in psychological research which aims to help explain distress & disability in chronic pain.

You may qualify if you:

- Suffer from chronic pain
- Are aged 18 & over
- Are English-speaking

Visit our webpage for more information and how to take part:
<https://warwick.ac.uk/fac/sci/psych/research/lifespan/sleeplab/projects/within>

Contact us:
 WITHIN Study
 Warwick Sleep & Pain Lab
Withinstudy@warwick.ac.uk
 Tel: 07385600421

To take part, read our information leaflet and complete the short screening-questionnaire or get in touch with us!





UK Research and Innovation



National Institute for Health Research



Warwick Study of Mental Defeat in Chronic Pain

Participant Recruitment Poster (v2.1d) (IRAS Number: 223190) 13/03/20



Remember to tell your line-manager and [record coronavirus absence in](#)

Personal Development Conversations



This year, the Personal Development Review (PDR) process will take place in the form of a Personal Development Conversation (PDC). You have received an email this week.

Pensions automatic re-enrolment exercise: June 2022

Every three years, any individuals who are not currently saving for a pension and who meet certain eligibility criteria must by law be re-enrolled automatically into a pension scheme by their employer. If you are not already in a pension scheme, please find out how this affects you before our next automatic re-enrolment exercise in June.

Summer celebrations at Warwick



It's a summer of celebrations on campus!

This summer we have a spectacular line up of celebrations happening on campus. There will be our traditional Degree Congregations and Warwick Celebrates events (for those who graduated in absentia in 2020 and 2021). We'll also be taking part in the Birmingham 2022 Commonwealth Games, providing an Athletes village, and co-hosting the International Children's Games.

These events will have an impact on all staff, students and visitors to our campus. Read on to find out what it means for staff. Due to the scale of activity, we have created this hub to keep everyone informed and we will be updating it regularly.

Take a look at summer celebrations coming up and what you need to know about the impact on campus, including on parking.



Planning to travel?

1 Email [Catherine Johnstone](#) to get registered as a booker for Key Travel.

2 As a condition for valid [Business Travel insurance](#), Complete Risk Assessment downloaded [here](#) before booking travel. Email to HoD.Psychology@warwick.ac.uk to get HoDs approval.

Subscribe

Past Issues

Translate ▼

obtained from Key Travel (working days Mon/Tues/Thurs).

4 Email [Steve McGladrigan](#) with any queries about the policy.

[Read about the temporary financial regulations in place to ease problems with Key Travel booking implemented 20 April 2022.](#)

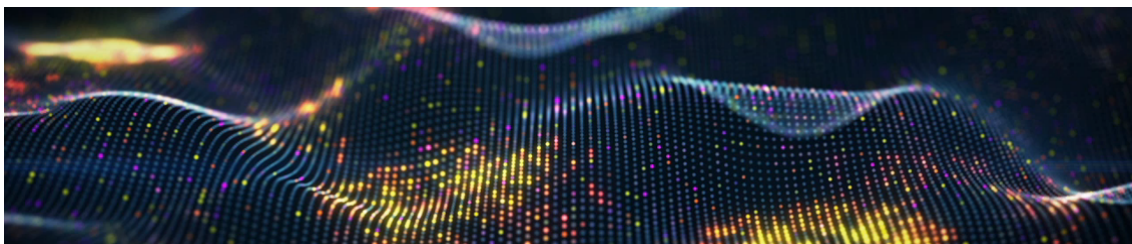
Travel Business Insurance

KEY TRAVEL - APPROVED BOOKERS

After feedback from departments about the unacceptable wait times being experienced when trying to contact Key Travel by telephone or email, they have implemented a recovery plan which is operational with immediate effect. **The Travel Enquiry Form should not be used until further notice.** This will ensure that calls and emails are picked up and responded to in a much more timely manner by a dedicated Warwick team. Use of the Key Travel portal to make bookings remains the most efficient way to book travel requirements in most cases, but access to a dedicated Warwick support team is a welcome development. The dedicated service team is available on 0161 819 9812 Monday to Friday 08:45-17:30 with 24/7 telephone support via the same number. The new email address is warwick@keytravel.com. Further information can be found on this [website](#).



ED&I news



Warwick Inclusion Conference; Book your place

Bookings are now open for our first Warwick Inclusion Conference on 16 June. Exploring what it means to be an inclusive institution, there'll be a mix of in-person and online options with sessions led by students, academic and professional service staff, external partners, members of the local community and even performing artists!



Development Opportunities

[New Warwick Principles and Social Inclusion course](#)

As part of our ongoing commitment to creating an environment where all members of our communities can thrive, we're introducing a new essential [Warwick Principles and Social Inclusion course](#). It will help to ensure that we all have a shared understanding of what we expect of each other as members of the Warwick community. You're asked to complete this around the same time as your PDC.

Development opportunities

Don't forget to explore [development opportunities](#) available at Warwick.

If you're currently at Professor, Reader, or Associate Professor levels, consider [registering your interest in How Warwick Works](#), a shadowing and development scheme for academics to support your leadership development.

[Complete new Fire Safety Training](#)

Subscribe

Past Issues

Translate ▼



replace previous Fire Safety Awareness, Fire Extinguisher and Fire Warden Moodle training packages. Completion should take approximately 30 minutes and is mandatory for all staff and students.

Student Visa Compliance Moodle module

Staff working with students or with sponsor obligations relating to sponsored students (including administrative staff in academic departments and professional services and academics who are Personal Tutors) are invited to complete the Student Visa Compliance Module on Moodle by 23 September

Online Learning Resources

Wellbeing

Bone density screening: 8 June

Bone density screening which provides an indicator of fracture risk, along with advice on safeguarding against osteoporosis, is available on campus from the company Bone Matters, at a cost of £35. See more information.



Warwick Doctoral College @DC_Warwick · May 18

...

The Wellbeing Support Service, weekly theme is work life balance, something that is easy to overlook.

Find information on the support available or sign up to a 'Work Life Balance' skills session, to explore more ways to achieve the right balance for you. tinyurl.com/w84a4p9r



Research Exchange

[Subscribe](#)[Past Issues](#)[Translate](#) ▼


**A non-judgmental, non-advisory,
confidential, student-run
listening service**



Mon-Fri:
9pm-9am

Sat-Sun IM only:
9pm-1am

Call: 02476 522199 or
02476 574322

IM:
warwick.nightline.ac.uk/im

Drop in at our building on campus:
Free condoms, tampons,
pregnancy tests, ear plugs etc

Get 24/7 mental health and wellbeing support

Access [Togetherall](#), a safe place to talk, share and support others like you, available free to all staff and students. It's an anonymous community where you can express how you're feeling, get support and do courses at your own pace

Please reach out for support if you need it, either through your department or the [Employee Assistance Programme](#). You can also access self-help tools through the [Staff Wellbeing Hub](#) and [Wellbeing Support Services](#) (support for students).

[New Warwick Principles and Social Inclusion course](#)

As part of our ongoing commitment to creating an environment where all members of our communities can thrive, we're introducing a new essential [Warwick Principles and Social Inclusion course](#). It will help to ensure that we all have a shared understanding of what we expect of each other as members of the Warwick community. You're asked to complete this around the same time as your PDC.

Development opportunities

Don't forget to explore [development opportunities](#) available at Warwick.

If you're currently at Professor, Reader, or Associate Professor levels, consider [registering your interest in How Warwick Works](#), a shadowing and development scheme for academics to support your leadership development.

Interested in finding more about Sustainability? Join the [Psychology GREEN TEAM](#)

ENVIRONMENTAL SUSTAINABILITY NEWSLETTER [HERE](#).



Brought to you by the WIHEA ESD learning circle, the Challenge will see staff and students co-creating possible solution to a real environmental challenge in Coventry, using a more holistic approach to sustainability in HE. The Challenge will engage participants in two 3-hour workshops on **13th and 15th June 2022, 2-5pm**, plus a 1-hour optional drop in support session.

The workshops are designed to facilitate a collaborative approach to reframing a challenge, and will coach you to help explore it in an innovative way. After the workshops, the Challenge will last for additional 10 days (two weeks in total). With the help of expert student and staff coaches, you will continue collaborating asynchronously and by the end of two weeks will submit your solutions either in the form of an e-poster or a presentation, and a video.

All staff and students (UG and PG) are welcome. [Register by 5 June](#) [Link opens in a new window](#) to secure your or your team's place and be in with a chance to **win a first place prize of £400***! The winning idea will also be considered for implementation by the University and/or Coventry City Council. *Please note that the prize winnings can only be awarded to the student participants.

Register by 5 June



Find out about Tree planting and biodiversity projects on campus [here](#)



Leaving Warwick campus for wildlife this No Mow May!

Commonwealth Games

– what's happening at Warwick

We're helping set the West Midlands stage as our region hosts the Commonwealth Games in 2022. Read on to find out more about Warwick's role and how our facilities will be used by 2,000 world-class, international athletes.

The Birmingham 2022 Commonwealth Games are taking place 28 July - 8 August 2022 in towns and cities across the West Midlands. The Games provide the opportunity to once again showcase the region's ability to thrive in the global spotlight, following hot on the heels of Coventry City of Culture 2021.



BBC RADIO 1'S BIG WEEKEND

Fri 27 - Sun 29 May 2022

War Memorial Park

Sold Out - Listen Live

Radio 1's annual flagship live music event with headliners including Harry Styles and Ed Sheeran. Tickets are sold out but you can enjoy remotely across the BBC.



Poetry Parade: Reimagining the Jubilee

Come along to the Mead Gallery in Warwick Arts Centre on 1 June to take part in a creative exploration of the Queen's Platinum Jubilee. Led by poet, dramatist and writer Dzifa Benson, you'll consider what the Jubilee means to you and the wider meaning of what it represents in a diverse 21st century Britain. [Find out more and book your place.](#)



And finally...

Subscribe

Past Issues

Translate ▼



Mark Pemberton @markpemberton20307397 · 22m

Caludon castle wildflowers @visit_coventry @HistCovTrust @Coventry2021 @Covcultureshow @igerscoventry @VisitBritain



Copyright (C) *|2022|* *|University of Warwick Psychology Department|*. All rights reserved.

Our mailing address is:
*|c.j.johnstone@warwick.ac.uk|**|*