

Psychology Bulletin

19 January 2023
22/23 Issue 12

The latest news, events & announcements from Psychology

INSIDE

News

Psychology PGTs and PGRs celebrated Graduation at a lunchtime reception in the Panorama Suite on Monday - Congratulations!

Hybrid Guest Seminar:

Dr Adam Harris, UCL
13:00 Fri 20 Jan H0.44

Internal Seminar

Dr Sabrina Twilhaar
12:00 Weds 25 Jan H0.44

🔑 Spare keys are now located in H141. If the office is closed the cleaners or Estates have master keys.

Estates:

Use the **Service Desk** online for any maintenance issues:

[Estates Helpdesk](#)

Phone: +44 (0)24 765 75100

Email: Estates.Servicedesk@warwick.ac.uk

Out of hours: +44 (0)24 765 22083



Warwick Psychology @warwickpsych · Jan 18

Congratulations from all in @warwickpsych to our postgraduate students who graduated this week! 🎓 #WarwickGrad

University of Warwick @warwickuni · Jan 17

We've had an amazing day celebrating the newest members of our alumni community. Congratulations to all of today's graduates! 🎓

#WarwickGrad



IT ISSUES:

Contact the IT Helpdesk: [Online help](#)

Email: Helpdesk@warwick.ac.uk

024 76573737 9:00 to 17:00 Mon-Fri

Emergencies

For emergencies, please call the Security Team, available 24/7, 365 days a

year: (02476 5) 22222

12:00 - 13:00, Wed, 25 Jan '23 [Export](#)

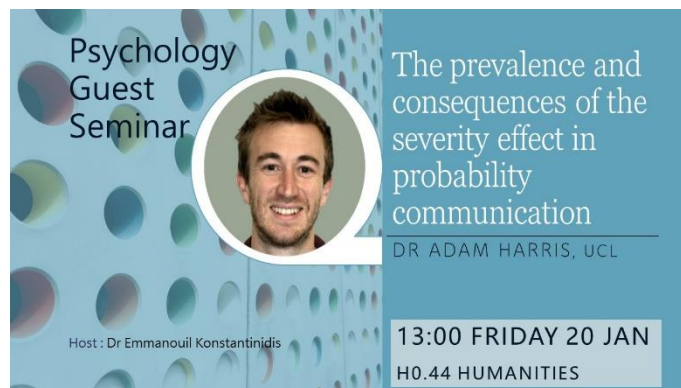
[as iCalendar](#)

Internal Seminar: H0.44 - in person only
Speaker: Dr Sabrina Twilhaar

Title: Nature and nurture: Social and neonatal risk profiles in very preterm born children and developmental outcomes early childhood



Events



Psychology Guest Seminars 2023

FRIDAY:

12:00 Friday 20 January 2023 H0.44

[Dr Adam Harris](#) [The prevalence & consequences of the severity effect in probability communication](#)

UCL

Host: Dr Emmanouil Konstantinidis

Contact [Catherine](#) for a Teams link

2:15pm - 3:15pm, Thu, 26 Jan '23 [Export as iCalendar](#)

The Global Origins of Modern Science

Oculus OC1.01

Talk by James Poskett

Coming soon:

16:00 Thursday 16 February 2023 OC0.02

[Dr John Pickering](#) [Can loosing consciousness help the planet?](#)

UOW

Host: Professor Derrick Watson

16:00 Thursday 2 March 2023 H0.44

Professor Martin Pickering (title tba)
University of Edinburgh

Host: Dr Chiara Gambi

13:00 Friday 17 March 2023 H0.44

Dr Konstantinos Tsetsos (title tba)
University of Bristol

Host: Dr Emmanouil Konstantinidis

Career Events:

PS903 lecture open to all PhD/MPhil/MRes students:

Claire Edwards (RIS). [Grant Writing](#)

10:00 – 12:00 Monday 30 January H1.49

Although grant writing may seem a distant prospect for those currently still studying, having an idea about the whole process may be rather important when you come to take up your first job post-graduation. For some graduates the best way to find a first post-doctoral position is to 'write your own job', producing at least a draft grant application that will permit you, often in collaboration with a more experienced academic, to find gainful academic employment once you finish your studies. Many post-doctoral supervisors will ask for your assistance when writing future grants too - and will be more likely to employ you in the first place if you show some knowledge of this process. And for longer-term academic positions it is rare for employers not to ask about grant potential during the interview stage.

In this session Claire from our research services will provide an introduction to the process of grant writing and provide useful tips for those just embarking on this process .

Language and Learning Seminars T2

Contact: [Mintong Li](#)

12:00 Weds 1 February 2023 **Joost Rommers**
Lecturer, University of Aberdeen

12:00 Weds 15 March 2023 **Professor Cornelia Ebert,**
Goethe University of Frankfurt

Dates still available for academics to host a Guest Speaker either in person or on-line in February and April. Contact [Catherine](#) to check on dates.

JDM Reading Group

Contact: Simon van Baal

JDM Reading Group - Week 2

Friday 20 Jan, 16.00-17.00 @ H1.04

Thirty Years of Psychological Wisdom Research: What We Know About the Correlates of an Ancient Concept

M. Dong, N.M. Weststrate, M.A. Fournier

InReach10x Seminar

Thu 26 Jan, '23

14:15 - 15:15 OC1.01

[Export as iCalendar](#)

Sign up for talk [here](#)

James Poskett

The Global Origins of Modern Science

Where did modern science come from? Until recently, most historians agreed that the origins of modern science could be located in Europe, sometime between 1500 and 1700. In this talk, based on the latest scholarship, I present a very different account. Beginning in the fifteenth century and moving right through to the present, I make the case for the global origins of modern science, exploring the ways in which Africa, America, Asia and the Pacific fit into the story.

The history of modern science, I argue, needs to be understood as part of a history of global cultural exchange. In making this argument, I uncover the forgotten contributions of scientists from around the world, whilst also making the ethical, political, and intellectual case a critical engagement with the legacies of the history in the world of science today.

Turing Fellow HOSTED Catchup

Friday 27 January

This event will showcase latest developments in data science and artificial intelligence, with talks from Turing Fellows and lead researchers at The Alan Turing Institute. The event is also designed to facilitate connections between Warwick Turing Fellows and the broader University community. For more information and to register, please use [this link](#).

Warwick R User Group

Wed 1 Feb, '23

17:00 - 18:00

[Export as iCalendar](#)

Sign up here:

<https://www.meetup.com/warwickru/events/290999481/>

Speaker: Ellen Zapata-Webborn (Senior Research Fellow in Data Science and End Use Energy Demand, UCL Energy Institute)

Title: Using Predictive Modelling to Study the Impact of COVID-19 on Energy Consumption

Abstract: How did COVID-19 affect household energy consumption in the UK? How did changes continue or change in the 2 years since the start of lockdown 1? How have different types of households been affected differently? To answer these questions, we developed elastic net regression and neural network models to predict what would have happened in the absence of the pandemic and compared these 'counterfactuals' with observed electricity and gas consumption in several hundred households. The analysis was all done in R, with packages `data.table`, `caret`, `glmnet`, and `xgboost` doing most of the heavy lifting. In this talk I'll describe our approaches, the challenges we faced along the way, and what we found out.



[Faculty of Science, Engineering and Medicine Post-Doctoral Research Prizes 2023](#)

The SEM Faculty postdoctoral research prizes for outputs (e.g., papers) published in 2022 is open for nominations. If you have a (self/other) nomination for this prize, please email [Dr Olga Feher](#) (Deputy Director of Research) by 31 March 2023 who is running the Departmental selection process. Full details of eligibility criteria [here](#)

Do you have an idea to make Warwick more equal, diverse, and inclusive?

If you are interested in applying, read our [webpage](#) to get more information on the selection criteria.

You can [apply here](#).

The deadline for completed applications is at 3pm on Friday 3rd February 2023

If you want to ask questions or get support, you can sign up for one of our online sessions [here](#), or email Tom.Ritchie@warwick.ac.uk.

BBSRC FTMA4 (Flexible Talent Mobility Account 4) call for applications

Run by the Chemistry Department - in collaboration with IATL and WIE - the [Designing for Inclusion programme](#) is looking of students and staff from **across all departments and faculties** and want to fund your solutions to EDI problems on campus.

We want you to use your lived experiences to identify problems and challenges at Warwick, and then work through our design thinking programme in February and March 2023 to co-create an interdisciplinary and innovative solution. To support students with this work, we will pay for up to five student members on your team to attend the four weeks of in-person workshops on Wednesday afternoons.

Put simply, if you are a student, we want to pay you to learn new skills, improve the student experience, and make Warwick a better place to live, study, and work.

To make sure your application is successful, you must have:

- A **student-led** research team composed of up to five students and two staff (with at least one student or staff from a different faculty on your project team), and;
- Identified a clear problem in relation to **Equality, Diversity, and Inclusivity** (EDI) issues and **Social Inclusion** within the Warwick Journey (e.g., inclusive pedagogies, anti-racism, awarding gaps, community building, neurodiversity, disability, gender and sexism, period poverty, and decolonisation).

The University has been awarded a BBSRC Flexible Talent Mobility Account 4 (FTMA4) to enhance the personal development, visibility and recognition of both technicians and researchers. The core FTMA4 schemes have been designed to increase two-way mobility with industry and embed industrial interaction within our research culture. Applications are invited for industrial secondments and FTMA Fellowships. This scheme is open to employed postdoctoral researchers, technicians, and external industrial applicants. Applicants do not need to have been previously funded by BBSRC, but all projects must be under [BBSRC remit](#). Applications can be submitted at any time and will be reviewed on a rolling basis and will close once all funding has been allocated. For more information, please visit the [FTMA4 webpages](#).

**National Data Science and AI Innovation
Bootcamp: 16-17 February and 14 March
2023**

The Alan Turing Institute and the University of Warwick have collaborated to create a National Data Science and AI Innovation Bootcamp (NIB). The focus of NIB is to create commercial awareness and transferrable business skills and help individuals understand the commercial potential of their research area. The environment will be fully supported with access to expert mentors. This residential course hosted at Warwick Conferences will deliver a bootcamp of research translation skills to the National Data Science and Artificial Intelligence research community. [Find out more and apply here.](#)

**Warwick Education Conference and
TEALfest June 2023**

The best of TEALfest and the Warwick Education Conference will come together for a bonanza week of connection, engagement and inspiration in June 2023. The theme for both events will be 'Empowering Students and Staff through Small Teaching'. TEALfest (online) will run Tuesday 20 - Wednesday 21 June 2023, with Warwick Education Conference (in person) happening Thursday 22 - Friday 23 June. Please put the dates in your diary to ensure you don't miss this inspiring event. More details will follow in the new year.

**Final Call:
Introduction to
Research Data
Science 2023**

Closing date: 22 Jan

Applications for **Introduction to Research Data Science 2023** will be closed **on 22 January**. Please find the details of the course below.

Introduction to Research Data Science

- This intensive, hands-on course is instructed by members of the Turing's Research Engineering Group and aims to bring learners in touch with day-to-day research data science practices.
- The course is open to anyone interested in learning about, or using, data science methods in research.
- Turing PhD students and researchers are particularly encouraged to apply.
- Course dates are **13-24 February 2023** with a deadline to apply of **22 January**.
- Please find full course details, syllabus, and more on [the event and application page here](#).

As always, our training opportunities are free and open to successful applicants who meet the prerequisites, but please note that places are limited.

All academic training or research development opportunities organised or endorsed by the Turing are updated regularly on our website [Skills at the Turing | The Alan Turing Institute](#).

Thu 26 Jan, '23

09:30 - 12:30

[Export as iCalendar](#)

[Early-Stage Researcher Induction Module: Welcome and Orientation](#)

Book for the first in a series of 5 Teams sessions

Session 1 - [Welcome and Orientation](#)

Session 2 - [My Research Trajectory](#)

Session 3 - [Leading and Influencing Research](#)

Session 4 - [Academic Publishing](#)

Session 5 - [Research Income and Impact](#)

Course bookings for 2022/23 are now open in [SkillsForge](#)

[Postgraduate Certificate in Transferable Skills in Science](#)

Researcher Development Programme

[Researcher Development 2022-2023 \(office.com\)](#)

[RD 2023 Handbook \(Spring\)-includes schedule with bookable links](#)

[RD Spring Schedule \(print version\)](#)

Nominate a colleague for the **Warwick Awards for Teaching Excellence 2023** - and there's a chance for both staff and students to [get involved as judges](#) too. Need inspiration? [See who won in 2022, the categories, and make a nomination.](#)

For your Masters students

PhD opportunities on Program in Cognitive Science at CEU, Austria

Details [here](#).

Application deadline: 1 February 2023

PhD opportunity

Postdoctoral Researcher in Urban Resilience - Capacity Building

Details [here](#).

Application deadline: 17 January 2023

Doctoral College's Networking Fund

A maximum £300 is available to bring people together (both online or in person); to educate, stimulate or support; to challenge. Find out more [here](#).

Closing date: 27 January

PGR [hardship fund](#)

Available for applications from PGRs facing exceptional financial circumstances. Other hardship support is also available, and the details can be found [here](#).

Events for new PhDs:

Campus walk for new PGRs on 24th January 2023 at 2pm [Sign up here to join](#)

PGR welcome event on 28th February 2023 at 3pm [Register your interest here](#)

[Departmental Ambassador Training:](#)
Wednesday 25 January and **Wednesday 1 March**

The WP Team will be running some virtual training sessions for Departmental Ambassadors (who do not work for Warwick Welcome Service) on Wednesday 25 January and Wednesday 1 March, both 16:00-17:30 on Teams. The training will focus on safeguarding and child-protection, as well as working with young people. Ambassadors can sign up to the training [here](#).

[Student newsletter:](#) (Tuesday Week 1)

Your student newsletter (Tuesday Week 2) [UG/PGT/PGR](#) - 17 January

Your student newsletter (Friday Week 1) [UG](#), [UG 1st and 2nd years](#), [PGT](#), [PGR](#) - 13 January

[Undergraduate to Postgraduate Study Fair:](#)
Wednesday 1 February 2023 (13:00-16:00)

The Undergraduate and Postgraduate Study Fair is a great opportunity for current students to meet PG students, department representatives and the Warwick Business School CareersPlus team who can offer support and guidance in the next steps in education after UG and PGT study, as well as network with other undergraduates from across the University. Students can register to attend by following [this link](#).



Wednesday 8 March
UG Careers Conference

Contact: Dr Gitit Kadar-Satat

The Psychology Research Skills Development Scheme (PRSDS) provides staff members, post-docs, and PhD researchers in our department an opportunity to 'recruit' undergraduate students to support their research. Some of our undergrads are incredibly keen to get hands-on experience with psychology research and to develop research skills, from running experiments, through preparing stimulus material, to setting up, piloting and analysing surveys. You can now upload an advert by filling in this form: [Psychology Research Skills Development Scheme](#). For more info about the scheme [click here](#) or contact me directly.

In addition, if you have recently recruited a student for any research or work experience opportunity, it'd be great if you could update the [UG Research&Skills tracker](#).

Funding opportunities

[Funding Opportunities listed by RIS](#)
Internal and External

RIS aim to have a rota of 2 members of the team based in Psychology in **H0.38 on Wednesdays** so please pop in with any queries.

Research Strategy and Development Manager - **Claire Edwards**
Research Support Manager - **Andrea Howard**
Research Development Officer - **Alex Glazer**
Research Support Officer - **Bhavana Sharma**
Research Support Officer - **James Barrett-Evans**
Research Support Officer - **Parminder Matharu** (0.5 FTE)

Research Impact Officer - **Rob Hollingsworth**

UKRO Annual Event- Tues 31st Jan 2023, 9am- 12pm

As a [UK Research Office \(UKRO\)](#) member organisation, the University of Warwick runs annual UKRO events, featuring presenters from UKRO. The next UKRO Annual Event is confirmed for the **morning of 31st January 2023 (9am- 12pm)**. The session will be in person, with the option to join online.

Please sign up

at: <https://warwick.ac.uk/services/ris/researchstrategy/horizon-europe/ukro-event/>. For any queries about the event or for assistance with registering, please contact lelia.buretia@warwick.ac.uk

Appel à projets - Allocations post-doctorales

Details from Prof Sotaro Kita. Deadline: 31 March 2023

Energy GRP: Funding opportunity

Apply for the Energy Global Research Priority Small Grants Scheme to fund energy-related research, impact and engagement activities if your research focuses on [any of these themes](#). Applications close by 31 January 2023

Apply for the MRC Impact Acceleration Account

The Medical Research Council Impact Acceleration Account (MRC IAA) is now open for stage 1 applications. The MRC IAA validates the need for medical and healthcare technology to enable successful translation. [Find out more about the application process and apply by 18 January](#).

Impact Opportunity

A workshop, held at the Palace of Westminster in London and delivered in conjunction with the Industry and Parliamentary Trust (IPT) and the Parliamentary Office for Science and Technology (POST), is now available to book online. Only those intending to attend should sign-up as places are strictly limited and available on a first come first serve basis. Contact: Dr Rob Hollingworth, RIS Manager <https://warwick.ac.uk/services/lmd/research-active-staff/ras-dev-opportunities/research-impact-services/intro-to-parliament1-/>

Apply for funding to embed community engagement in your teaching

Find out how you can [apply for up to £5,000](#) from Warwick Institute of Engagement to help you develop and implement your ideas to include public or community engagement in your teaching.

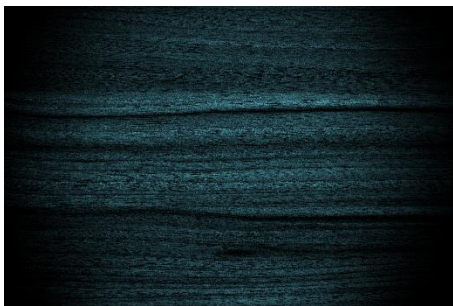
Would you like to include public or community engagement in your teaching? If you're excited about encouraging your students to engage with the public, we want to hear from you. Find out more at an information session on 26th January and apply to the fund by 10th February.

Find all the details and book onto the information session [here](#).

Apply for up to £5,000 from Warwick Institute of Engagement to help you develop and implement your ideas. The [Public and Community Engagement Module Development fund](#) is designed to support staff to develop and implement their ideas for including public or community engagement in their UG and PGT modules. We're looking for projects which will either add new elements to an existing module or create a new module.

Teaching students to engage with the public helps them relate their subject knowledge to the world around them. It enables them to communicate with others about their subject and develop transferable skills that are useful for future study or work. These are just some of the reasons it features in the Dimensions of a Warwick Curriculum. It is also an opportunity to grow a pool of students who could go on to support your department's public engagement activities and be good advocates for their subject.

Publications



The importance of clinicians' and parents' awareness of suicidal behaviour in adolescents reaching the upper age limit of their mental health services in Europe

van Bodegom, Larissa S., Gerritsen, Suzanne E., Dieleman, Gwendolyn C., Overbeek, Mathilde M., de Girolamo, Giovanni, Scocco, Paolo, Hillegers, Manon H. J., Wolke, Dieter, Rizopoulos, Dimitris, Appleton, Rebecca et al. (2023) The importance of clinicians' and parents' awareness of suicidal behaviour in adolescents reaching the upper age limit of their mental health services in Europe. *Journal of Affective Disorders*, 325 . pp. 360-368. doi:10.1016/j.jad.2022.12.164

11:06, Fri 13 Jan 2023

Aberrant allometric scaling of cortical folding in preterm-born adults

Schmitz-Koep, Benita, Menegaux, Aurore, Zimmermann, Juliana, Thalhammer, Melissa, Neubauer, Antonia, Wendt, Jil, Schinz, David, Wachinger, Christian, Daamen, Marcel, Boecker, Henning, Zimmer, Claus, Priller, Josef, Wolke, Dieter, Bartmann, Peter, Sorg, Christian and Hedderich, Dennis M. (2022) Aberrant allometric scaling of cortical folding in preterm-born adults. *Brain Communications*, 5 (1). fcac341. doi:10.1093/braincomms/fcac341

16:58, Wed 11 Jan 2023

Social inclusion and HR

BBSTEM Annual Recap

Please find a link to BBSTEM's annual recap [here](#).

The Doctoral College is keen to work with PGRs to foster a diverse, inclusive and lively research culture across all academic departments. As part of this effort, we are in the early stages of planning a **three-day programme for this summer**, during which PGRs will be able to showcase their own research and connect with their peers and experts in different fields. We welcome input from PGRs on what the programme should include and how it should be run, so if this sounds like something you would like to get involved with, please get in touch (doctoralcollege@warwick.ac.uk).

Forum for Leaders of Inclusive Cultures - The Impact of Discrimination and Exclusion

Tuesday 7 February 2023, 3.30-4.30pm, online.

Discrimination and exclusion have a very real, multifaceted, and significant impact on employee's health, wellbeing, and ability to perform at work. Research shows that these behaviours have impacts both physiologically (e.g., increased blood pressure, cortisol, and heart rate) and psychologically (e.g., speak up less, less decisive, less likely to share their needs and request help, reduced ability to set, persist with, and achieve goals).

How can employers combat discrimination and exclusion in their workplace, and promote positive cultures that support employee wellbeing and productivity? Join us for this free event where our panel will discuss these topics, their experiences, and the work of their organisations to build truly diverse and inclusive cultures. [Find more information and register to attend here](#).

Cycle Assist - Exploring the Disability Cycling Movement

Saturday 4 February, 9:30am - 4:30pm

Humanities Building

[Further information and booking](#)

Listen to inspiring talks from disability change makers, campaign for change in our focus groups and art workshops, and experience assisted cycling with our led rides and cycle skills.

Throughout the day we have a number of different sessions and you are welcome to come to as many or as few as you would like:

- Dr Bike
- Kate Ball from Wheels for Wellbeing - talk and discussion
- Led Ride to Kenilworth Common
- Helmet policy
- Accessibility in South Coventry Focus group
- Culture Cycle
- Access Cycle Showcase
- Cycle Skills
- Catering by Canley Pop up café

Some of the events require booking so please visit our website using the button below.

There is no entry fee and a free lunch is included.

Safeguarding Update

Department Safeguarding Office, Linda Wilson, sent reminder 16-12-22

Safeguarding have asked me to remind you that when running events involving children or adults at risk, a safeguarding risk assessment form must be completed and emailed to the safeguarding team for comment/approval.

So please, if you are hosting any event; taking part in a recruitment event off campus or undertaking research which may include children or vulnerable adults, contact me about creating a risk assessment in plenty of time so that we can get approval from the safeguarding team.

There have been some small updates to the safeguarding policy recently to incorporate some changes that were made to Keeping Children Safe in Education for 2022 which can be viewed [here](#). Anyone with safeguarding responsibilities is politely reminded to complete the Educare safeguarding training courses on Child Protection Fundamentals and Safeguarding Young People (Colleges and Universities). Please email safeguarding@warwick.ac.uk if you are having difficulties with registration. There is also additional Moodle training for those involved with degree apprenticeships, which can be accessed [here](#). Safeguarding would also like to remind colleagues to send through any risk assessments to them at the above email for any event involving children or adults at risk for comment/approval.

Staff Support Fund

The Staff Support Fund to help eligible employees who are struggling financially with unexpected costs or a change in personal circumstances, arising from the current cost of living crisis has been launched. You can [read more details about eligibility](#), and register interest to be notified when crisis loan applications open in January.

Slice of Science Family Day: Sunday 12 March 2023 Call for Activities

Slice of Science 2023 is back this year with a family day on Sunday 12 March 2023. The faculty WP Team in conjunction with Warwick Institute of Engagement is seeking SEM activities and short talks suitable and engaging for all ages. If you have any questions or would like to pitch an idea, please email SEMFacultyWP@warwick.ac.uk in the first instance. More details about the event will be released soon.

A Celebration of Ada Lovelace: 13 March 2023 (Somerset House, London)

To celebrate the legacy and impact of Ada Lovelace, the [Kindness Studio](#) is hosting art and AI activities involving a community of artists and scientists to celebrate her legacy on 13 March 2023 at [Somerset House](#) in London. To make this event as accessible as possible, the University of Warwick and The Alan Turing Institute can support travel to/from the event when it takes place. [Register](#) on the webpage to secure your ticket and receive support with your travel. [See more details here](#).

Sustainability

[Sustainability at Warwick Newsletter January 2022](#)

January's Sustainability Bulletin includes the chance for students to sign up to be a Student Green Champion (counts towards their Warwick Award) with an event to find out more 12:00 - 13:00 24 January OC0.01 Oculus.

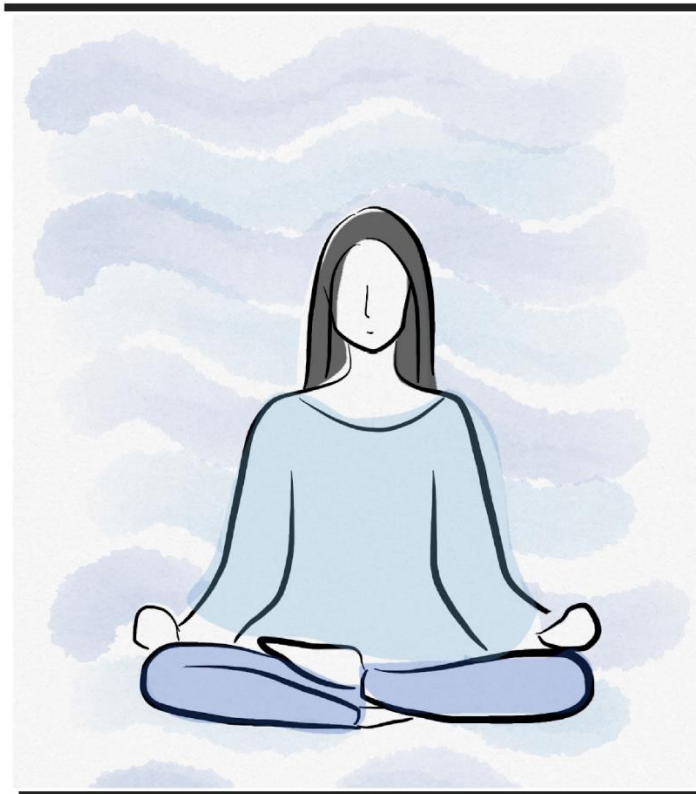
There's a recycle your bike sale 12:00 on 26 January, and Wednesday Warwick Wombles monthly litter picks are starting again.

If you'd like to join the Psychology Green Team, more details here: [Psychology Green Team \(warwick.ac.uk\)](#)



Call for participants

Does meditation change the way we perceive the world around us?



Interested in experiencing something **new** and **unusual**? Would you like to participate in a study on the influence of **meditation exercises** on the **perception of emotions**?

Then click on the link below to participate in our study!

You will have the opportunity to meet a new kind of avatars - the metahumans.

<https://www.soscisurvey.de/hu-study/>

Follow us  **WARWICKPSYCHOLOGY**  **@warwickpsych**