

Psychology Bulletin

26 January 2023
22/23 Issue 13

The latest news, events & announcements from Psychology

INSIDE

News

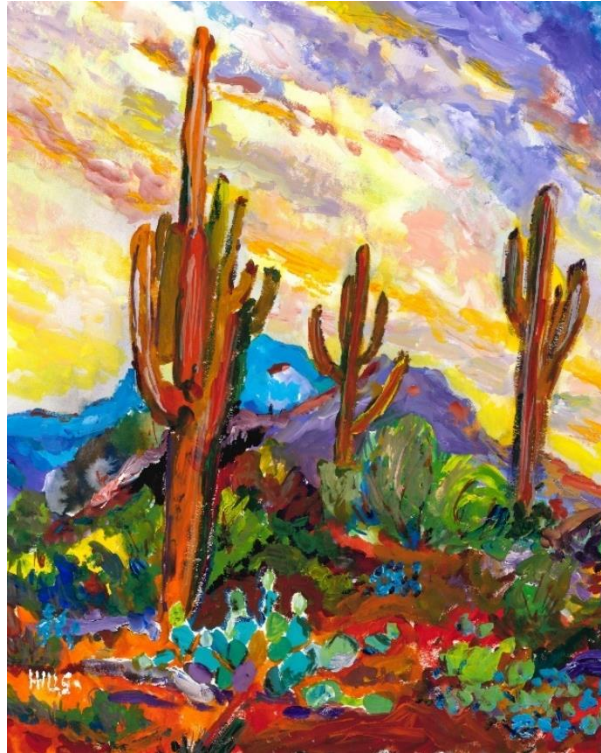
Exhibition of THE WORK OF
THOMAS HILLS
Sonoran Desert Series
Ground Floor, Humanities

PhD Support Group:

12:00 Mon 30 Jan H0.61

Grant Writing:

Claire Edwards
10:00 - 12:00 Mon 30 Jan
H1.49 Max 20
students/PGRs Sign up
[here](#)



Congratulations to
Dr Aleksandra Krogulska
on passing her Viva today!



Spare keys are now located in H141. If the office is closed the cleaners or Estates have master keys.

Estates:

Use the **Service Desk** online for any maintenance issues:

[Estates Helpdesk](#)

Phone: +44 (0)24 765 75100

Email: Estates.Servicedesk@warwick.ac.uk

Out of hours: +44 (0)24 765 22083

IT ISSUES:

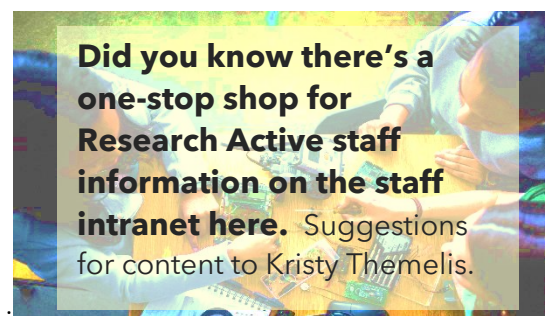
Contact the IT Helpdesk: [Online help](#)

Email: Helpdesk@warwick.ac.uk

024 76573737 9:00 to 17:00 Mon-Fri

Emergencies

For emergencies, please call the Security Team, available 24/7, 365 days a year: (02476 5) 22222



Did you know there's a one-stop shop for Research Active staff information on the staff intranet here. Suggestions for content to Kristy Themelis.

Events

Psychology Guest Seminars 2023

Coming soon:

16:00 Thursday 16 February 2023 OC0.02

[Dr John Pickering](#) [Can losing consciousness help the planet?](#)

UOW

Host: Professor Derrick Watson

16:00 Thursday 2 March 2023 H0.44

Professor Martin Pickering (title tba)

University of Edinburgh

Host: Dr Chiara Gambi

13:00 Friday 17 March 2023 H0.44

Dr Konstantinos Tsetsos (title tba)

University of Bristol

Host: Dr Emmanouil Konstantinidis

Language and Learning Seminars T2

Contact: [Mintong Li](#)

12:00 Weds 15 February 2023 **Joost Rommers**

Lecturer, University of Aberdeen

12:00 Weds 15 March 2023 **Professor Cornelia**

Ebert, Goethe University of Frankfurt

Dates still available for academics to host a Guest Speaker either in person or on-line in February and April. Contact [Catherine](#) to check on dates.

JDM Reading Group - Week 3

Friday 27 Jan, 16.00-17.00 @ H1.04

The Strengths of People in Poverty

W.E. Frankenhuis, D. Nettle

Next week Joyce will join us halfway through the reading group session to discuss her recent Psych Review paper "Process and content in decisions from memory."

JDM Reading Group - Week 4

Friday 3 Feb, 16.00-17.00 @ H1.04

Process and content in decisions from memory.

W.J. Zhao, R. Richie; S. Bhatia

Career Events:

PS903 lecture open to all PhD/MPhil/MRes students:

Claire Edwards (RIS) [Grant Writing](#)

10:00 - 12:00 Monday 30 January H1.49



In this session Claire from our research services will provide an introduction to the process of grant writing and provide useful tips for those just embarking on this process. This talk is open to the first 20 students/post-docs to respond using [this form](#).

Rob Hollingworth (RIS) [Impact](#)

10:00 - 12:00 Monday 6 February H1.49



In this session Rob from our research services will introduce the concept of impact, what it is (and is not) and how you might consider the future impact of your own doctoral research.

This talk is open to the first 20 students/post-docs to respond using [this form](#).

12:15 Tues 31 Jan 2023 OC0.01

The role of AI in Eldercare: Examples, Lessons, and the Future

Professor Alex Mihailidis, University of Toronto

Full details [here](#).

Turing Fellow HOSTED Catchup

Friday 27 January

This event will showcase latest developments in data science and artificial intelligence, with talks from Turing Fellows and lead researchers at The Alan Turing Institute. The event is also designed to facilitate connections between Warwick Turing Fellows and the broader University community. For more information and to register, please use [this link](#).

Picture a Scientist Screening:

Tuesday 31 January, 09:30-10:30 (L3, Science Concourse)

All staff and students from across the SEM faculty are welcome to join Physics at a screening of 'Picture a Scientist' For more information, please follow [this link](#). With thanks to Chemistry for sharing the film.

Warwick R User Group

Wed 1 Feb, '23

17:00 - 18:00

[Export as iCalendar](#)

Sign up here:

<https://www.meetup.com/warwickru/events/290999481/>

Speaker: Ellen Zapata-Webborn (Senior Research Fellow in Data Science and End Use Energy Demand, UCL Energy Institute)

Title: Using Predictive Modelling to Study the Impact of COVID-19 on Energy Consumption

Abstract: How did COVID-19 affect household energy consumption in the UK? How did changes continue or change in the 2 years since the start of lockdown 1? How have different types of households been affected differently? To answer these questions, we developed elastic net regression and neural network models to predict what would have happened in the absence of the pandemic and compared these 'counterfactuals' with observed electricity and gas consumption in several hundred households. The analysis was all done in R, with packages data.table, caret, glmnet, and xgboost doing most of the heavy lifting. In this talk I'll describe our approaches, the challenges we faced along the way, and what we found out.

[Faculty of Science, Engineering and Medicine Post-Doctoral Research Prizes 2023](#)

The SEM Faculty postdoctoral research prizes for outputs (e.g., papers) published in 2022 is open for nominations. If you have a (self/other) nomination for this prize, please email [Dr Olga Feher](#) (Deputy Director of Research) by 31 March 2023 who is running the Departmental selection process. Full details of eligibility criteria [here](#)

Science Precinct Design Day and Q&As:

Tuesday 7 February, 10:00-16:00 (Science Concourse)

From the STEM Grand Challenge Programme Team: Between 10:00 and 16:00 on Tuesday 7 February, there will be an opportunity to speak informally to the STEM GC architects (BDP) and the STEM GC programme team for the second Science Precinct Design Day. The latest imagery and ideas will be on display on the Science Concourse so if you are passing, please feel free to stop, ask questions and provide your ideas and suggestions. There will also be more formal Q&A sessions including a thirty-minute presentation about the latest progress. These sessions will be 10:00-11:00 (B0.12 Science Concourse) and 12:00-13:00 (L4, Chemistry). Please bring your lunch and/or coffee! For more details, please use [this link](#).

December Research Celebration Event Videos

As you may be aware, some SEM academics were featured in some two-minute videos that were first shown at the [December research celebration event](#). These videos are now live on YouTube and can be seen on the following links, along with others from the wider university: [Andrew Anzel \(WBS\)](#); [John Walsh \(SLS\)](#); [Kerry Kirwan \(WMG\)](#); [Khursheed Wadia \(Sociology\)](#); [Olge Castro \(SMLC\)](#); [Quassim Cassem \(Philosophy\)](#); [Siobhan Quenby \(WMS\)](#).

Wellcome Discovery Research Regional events – registration open

If you register, please inform

ResearchStrategydev@warwick.ac.uk

RIS contact: Claire Edwards

Please note attendance to the in-person events is free and lunch/refreshments will be provided; however, places are limited and on a first come, first served basis. Wellcome will consider any barriers and accessibility requirements you may have to attending and will support regional travel costs for attendees who usually work outside the host city and travel within the UK and Rol.

The Wellcome Discovery Research team will be launching webinars specifically targeted at researchers based in LMIC settings later in the year. If you are also interested in attending these, please sign up to the Wellcome newsletter for updates <https://tinyurl.com/484aeefw>.

Further links to information are provided below.

<https://wellcome.org/what-we-do/discovery-research/regional-events>

https://www.wellcomeevents.org/discovery_virtual

Scotland -Advanced Research Centre, **Glasgow** - Wednesday 19th of April 2023, 10:30-16:00

North-East - University of Leeds, **Leeds** - Tuesday 25th of April 2023, 10:30-16:00

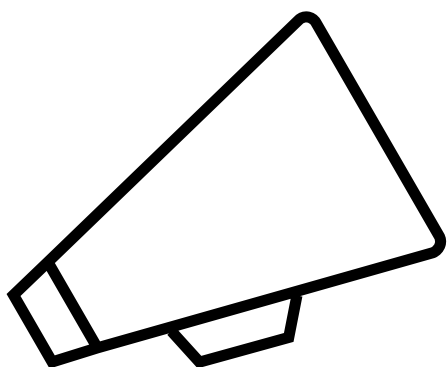
London & South-East - **Central London venue, TBC** - Thursday 27th of April 2023, 10:30-16:00

London & South-East - **Central London venue, TBC** - Friday 19th of May 2023, 10:30-16:00

Virtual event - Wednesday 7th of June 2023, 11:00-17:00 BST

Postgraduate Research Day: call for organisers

Contact: Lucas Castillo Marti and Yuqi Ye



Wellcome's Discovery Research team are delighted to invite you to attend one of eight events across the UK between March and May, to find out how their work can support you and your ideas.

Join them to discover the [breadth of disciplines](#) that they fund (from Biomedical Science to Population & Public Health, Medical Humanities, Social sciences, Physical sciences, Engineering, Data sciences, Clinical research and more) and hear about their commitment to unlocking your research potential through deep dives into their:

- [vision](#) and priorities
- [funding schemes](#)
- targeted funding
- approach to supporting a positive research environment

This is an opportunity to hear from and speak to Wellcome staff, committee members and other researchers

Registration

The in-person events are open to researchers based in the UK and Republic of Ireland at all career stages as well as research support staff. Please register below for your preferred location. The series of regional and national events will conclude with a virtual event so if you are unable to make it in person and/or your research is based outside the UK and Rol, please see the link for the virtual registration event below.

Wales & South-West - Apex Hotel, **Bath** - Tuesday 14th of March 2023, 10:30-16:00

Midlands - East Midlands Conference Centre, **Nottingham** - Friday 24th of March 2023, 10:30-16:00

Northern Ireland & Republic of Ireland - Queens University, **Belfast** - Tuesday 4th of April 2023, 10:30-16:00

North-West - University of Liverpool, **Liverpool** - Thursday 13th of April 2023, 10:30-16:00

The Postgraduate Research Day is a research presentation event held in Term 3 (usually around mid-May), where all students on research degrees are invited (including those run in conjunction with Coventry University). This is an event for us to discuss and present our work in front of our peers, which can be a good place to practice giving a talk / poster presentation, and hopefully also a place where to make research bonds with other PGRs who might be doing something related to your research.

At this time, I am writing to you because **we are looking for people who would like to be the organisers this year**. Know that we've chatted to people who did this in previous years and they're very happy to assist this year's organisers.



Fully-funded ESRC PhD Studentship with Professor Kim Wade & Dr Robert Nash

Closing date: **27 February 2023**

Find out more:

<http://bit.ly/3HI02OR>



WARWICK

BBSRC FTMA4 (Flexible Talent Mobility Account 4) call for applications

The University has been awarded a BBSRC Flexible Talent Mobility Account 4 (FTMA4) to enhance the personal development, visibility and recognition of both technicians and researchers. The core FTMA4 schemes have been designed to increase two-way mobility with industry and embed industrial interaction within our research culture. Applications are invited for industrial secondments and FTMA Fellowships. This scheme is open to employed postdoctoral researchers, technicians, and external industrial applicants. Applicants do not need to have been previously funded by BBSRC, but all projects must be under [BBSRC remit](#). Applications can be submitted at any time and will be reviewed on a rolling basis and will close once all funding has been allocated. For more information, please visit the [FTMA4 webpages](#).

National Data Science and AI Innovation Bootcamp: 16-17 February and 14 March 2023

The Alan Turing Institute and the University of Warwick have collaborated to create a National Data Science and AI Innovation Bootcamp (NIB). The focus of NIB is to create commercial awareness and transferrable business skills and help individuals understand the commercial potential of their research area. The environment will be fully supported with access to expert mentors. This residential course hosted at Warwick Conferences will deliver a bootcamp of research translation skills to the National Data Science and Artificial Intelligence research community. [Find out more and apply here](#).

Warwick Education Conference and TEALfest June 2023

The best of TEALfest and the Warwick Education Conference will come together for a bonanza week of connection, engagement and inspiration in June 2023. The theme for both events will be 'Empowering Students and Staff through Small Teaching'. TEALfest (online) will run Tuesday 20 - Wednesday 21 June 2023, with Warwick Education Conference (in person) happening Thursday 22 - Friday 23 June. Please put the dates in your diary to ensure you don't miss this inspiring event. More details will follow in the new year.

Opportunity to supervise an EU-funded postdoc

Potential supervisors should submit their details by **Friday 17th February** in order to be listed as a supervisor to coincide with the opening of an expected MSCA Postdoctoral Fellowships call on 12 April 2023.

RIS contact: Claire Edwards

As part of the [EUTOPIA](#) alliance Warwick has partnered with the Universities of Gothenburg, VUB in Brussels, Cergy Paris, Ljubljana and Pompeu Fabra in Barcelona to develop a matching service for the [Marie Skłodowska-Curie Actions Postdoctoral Fellowships \(MSCA-PF\)](#) and [EUTOPIA Science and Innovation Fellowships \(SIFs\)](#).

This partnering tool aims to facilitate fruitful collaboration between excellent Marie Curie and SIF candidates and potential supervisors willing to mentor young researchers. Interested parties should complete a short online [form](#) to register as a potential supervisor and to receive expressions of interest from postdoctoral researchers from other EUTOPIA universities and associated partners. Potential supervisors should submit their details by **Friday 17th February** in order to be listed as a supervisor to coincide with the opening of an expected MSCA Postdoctoral Fellowships call on 12 April 2023.



Did you know there's a one-stop shop for Research Active staff information on the staff intranet [here](#). Suggestions for content to Kristy Themelis.

Thu 26 Jan, '23

09:30 - 12:30

[Export as iCalendar](#)

[Early-Stage Researcher Induction Module: Welcome and Orientation](#)

Book for the first in a series of 5 Teams sessions

Session 1 - [Welcome and Orientation](#)

Session 2 - [My Research Trajectory](#)

Session 3 - [Leading and Influencing Research](#)

Session 4 - [Academic Publishing](#)

Session 5 - [Research Income and Impact](#)

Course bookings for 2022/23 are now open in [SkillsForge](#)

[Postgraduate Certificate in Transferable Skills in Science](#)

Researcher Development Programme

[Researcher Development 2022-2023 \(office.com\)](#)

[RD 2023 Handbook \(Spring\)-includes schedule with bookable links](#)

[RD Spring Schedule \(print version\)](#)

Nominate a colleague for the **Warwick Awards for Teaching Excellence 2023** – and there's a chance for both staff and students to [get involved as judges](#) too. Need inspiration? [See who won in 2022, the categories, and make a nomination.](#)

For your Masters students

PhD opportunities on Program in Cognitive Science at CEU, Austria

Details [here](#).

Application deadline: 1 February 2023

PhD opportunity

British Psychological Society and the Parliamentary Office for Science and Technology

The BPS are offering a 13-week fellowship to a PhD student in a psychology-related subject who are a Member of the British Psychological Society and in their penultimate or final year of study.

More details and how to apply can be found [here](#).

Doctoral College's Networking Fund

A maximum £300 is available to bring people together (both online or in person); to educate, stimulate or support; to challenge. Find out more [here](#).

Closing date: 27 January

PGR [hardship fund](#)

Available for applications from PGRs facing exceptional financial circumstances. Other hardship support is also available, and the details can be found [here](#).

Events for new PhDs:

PGR welcome event on 28th February 2023 at 3pm [Register your interest here](#)

Departmental Ambassador Training: Wednesday 25 January and **Wednesday 1 March**

The WP Team will be running some virtual training sessions for Departmental Ambassadors (who do not work for Warwick Welcome Service) on Wednesday 25 January and Wednesday 1 March, both 16:00-17:30 on Teams. The training will focus on safeguarding and child-protection, as well as working with young people. Ambassadors can sign up to the training [here](#).

Student newsletter: (Tuesday Week 1)

Your student newsletter (Monday Week 3) [UG/PGT/PGR - 23 January](#)

Undergraduate to Postgraduate Study Fair:

Wednesday 1 February 2023 (13:00-16:00)

The Undergraduate and Postgraduate Study Fair is a great opportunity for current students to meet PG students, department representatives and the Warwick Business School CareersPlus team who can offer support and guidance in the next steps in education after UG and PGT study, as well as network with other undergraduates from across the University. Students can register to attend by following [this link](#).



Wednesday 8 March
UG Careers Conference

Contact: Dr Gitit Kadar-Satat

For your UG students:



Warwick Uni Student Opportunity @SO_Warwick · Jan 24

Got questions about the Warwick Award? Drop into the SO Hub in Senate House between 2-4pm every Tuesday and Wednesday this term to talk with a member of the Award team



The Psychology Research Skills Development Scheme (PRSDS) provides staff members, post-docs, and PhD researchers in our department an opportunity to 'recruit' undergraduate students to support their research. Some of our undergrads are incredibly keen to get hands-on experience with psychology research and to develop research skills, from running experiments, through preparing stimulus material, to setting up, piloting and analysing surveys. You can now upload an advert by filling in this form: [Psychology Research Skills Development Scheme](#). For more info about the scheme [click here](#) or contact me directly.

In addition, if you have recently recruited a student for any research or work experience opportunity, it'd be great if you could update the [UG Research&Skills tracker](#).

Pre-Sessional English Courses 2023

Plans for the pre-sessional English offer at Warwick have been announced with some changes for 2023. All six-week course options will be offered face to face and online (the ten-week course will remain face to face only) and all options will also be open to students who don't need to clear their language conditions and would just like the extra tuition and practice. If anyone has any questions about these courses, please email pre-sessional@warwick.ac.uk.

Funding opportunities

[Funding Opportunities listed by RIS](#)

Internal and External

RIS aim to have a rota of 2 members of the team based in Psychology in **H0.38 on Wednesdays** so please pop in with any queries.

Research Strategy and Development Manager - **Claire Edwards**
Research Support Manager - **Andrea Howard**
Research Development Officer - **Alex Glazer**
Research Support Officer - **Bhavana Sharma**
Research Support Officer - **James Barrett-Evans**
Research Support Officer - **Parminder Matharu** (0.5 FTE)

Research Impact Officer - **Rob Hollingsworth**

UKRO Annual Event- Tues 31st Jan 2023, 9am- 12pm

Please sign up

at: <https://warwick.ac.uk/services/ris/researchstrategy/horizon-europe/ukro-event/>. For any queries about the event or for assistance with registering, please contact lelia.buretia@warwick.ac.uk

As a [UK Research Office \(UKRO\)](#) member organisation, the University of Warwick runs annual UKRO events, featuring presenters from UKRO. The next UKRO Annual Event is confirmed for the **morning of 31st January 2023 (9am- 12pm)**. The session will be in person, with the option to join online.

Appel à projets - Allocations post-doctorales

Details from Prof Sotaro Kita. Deadline: 31 March 2023

Energy GRP: Funding opportunity

Apply for the Energy Global Research Priority Small Grants Scheme to fund energy-related research, impact and engagement activities if your research focuses on [any of these themes](#). Applications close by 31 January 2023

Impact Opportunity

A workshop, held at the Palace of Westminster in London and delivered in conjunction with the Industry and Parliamentary Trust (IPT) and the Parliamentary Office for Science and Technology (POST), is now available to book online. Only those intending to attend should sign-up as places are strictly limited and available on a first come first serve basis. Contact: Dr Rob Hollingsworth, RIS Manager <https://warwick.ac.uk/services/lmd/research-active-staff/ras-dev-opportunities/research-impact-services/intro-to-parliament1-/>

Publications

The economic well-being of nations is associated with positive daily situational experiences

Gardiner, Gwendolyn, Lee, Daniel I., Baranski, Erica, Funder, David C., Beramendi, Maite, Bastian, Brock, Neubauer, Aljoscha, Cortez, Diego, Roth, Eric, Torres, Ana et al. <#> (2023) The economic well-being of nations is associated with positive daily situational experiences. Current Research in Ecological and Social Psychology, 4 . 100088. doi:10.1016/j.cresp.2023.100088

Social inclusion and HR

[Holiday Scheme bookings still open](#)

Looking for childcare for 5 to 12 year olds in the upcoming school holiday, Monday 20 - Friday 24 February? [View the timetable of educational and cultural activities](#) for the University's Holiday Scheme and book.

Designing for Inclusion Programme: Call for Applications

Deadline; Friday 3 February)

The Designing for Inclusion Programme (run by Chemistry and in collaboration with IATL and Warwick Enterprise) is looking for students and staff from **across all departments** and **faculties** to apply for funding to investigate solutions for EDI across the university. The programme seeks a student-led research team composed of up to five students and two staff (with at least one student or staff from a different faculty) and have a clear idea of an issue facing Warwick with regards to any aspect of EDI and Social Inclusion. The deadline for applications is Friday 3 February 2023 at 15:00. For more information and to apply, please use [this link](#). If you want to ask questions or get support, you can sign up for one of the online sessions [here](#), or email Tom.Ritchie@warwick.ac.uk.

Join an interactive session on [Active Bystanders in the Teaching Space](#) on Wednesday 23 February. The workshop will unpick the issue of unacceptable behaviour in the teaching space and aims to build the knowledge and confidence of participants to address it safely, using research-based active bystander principles.

BBSTEM Annual Recap

Please find a link to BBSTEM's annual recap [here](#).

The Doctoral College is keen to work with PGRs to foster a diverse, inclusive and lively research culture across all academic departments. As part of this effort, we are in the early stages of planning a **three-day programme for this summer**, during which PGRs will be able to showcase their own research and connect with their peers and experts in different fields. We welcome input from PGRs on what the programme should include and how it should be run, so if this sounds like something you would like to get involved with, please get in touch (doctoralcollege@warwick.ac.uk).

Forum for Leaders of Inclusive Cultures - The Impact of Discrimination and Exclusion

Tuesday 7 February 2023, 3.30-4.30pm, online.

Discrimination and exclusion have a very real, multifaceted, and significant impact on employee's health, wellbeing, and ability to perform at work. Research shows that these behaviours have impacts both physiologically (e.g., increased blood pressure, cortisol, and heart rate) and psychologically (e.g., speak up less, less decisive, less likely to share their needs and request help, reduced ability to set, persist with, and achieve goals).

How can employers combat discrimination and exclusion in their workplace, and promote positive cultures that support employee wellbeing and productivity? Join us for this free event where our panel will discuss these topics, their experiences, and the work of their organisations to build truly diverse and inclusive cultures. [Find more information and register to attend here.](#)

Cycle Assist - Exploring the Disability Cycling Movement

Saturday 4 February, 9:30am - 4:30pm

Humanities Building

[Further information and booking](#)

Safeguarding Update

Department Safeguarding Office, Linda Wilson, sent reminder 16-12-22

Safeguarding have asked me to remind you that when running events involving children or adults at risk, a safeguarding risk assessment form must be completed and emailed to the safeguarding team for comment/approval. So please, if you are hosting any event; taking part in a recruitment event off campus or undertaking research which may include children or vulnerable adults, contact me about creating a risk assessment in plenty of time so that we can get approval from the safeguarding team.

Staff Support Fund

Slice of Science Family Day: Sunday 12 March 2023 Call for Activities

A Celebration of Ada Lovelace: 13 March 2023 (Somerset House, London)

Listen to inspiring talks from disability change makers, campaign for change in our focus groups and art workshops, and experience assisted cycling with our led rides and cycle skills.

There is no entry fee and a free lunch is included.

There have been some small updates to the safeguarding policy recently to incorporate some changes that were made to Keeping Children Safe in Education for 2022 which can be viewed [here](#). Anyone with safeguarding responsibilities is politely reminded to complete the Educare safeguarding training courses on Child Protection Fundamentals and Safeguarding Young People (Colleges and Universities). Please email safeguarding@warwick.ac.uk if you are having difficulties with registration. There is also additional Moodle training for those involved with degree apprenticeships, which can be accessed [here](#). Safeguarding would also like to remind colleagues to send through any risk assessments to them at the above email for any event involving children or adults at risk for comment/approval.

The Staff Support Fund to help eligible employees who are struggling financially with unexpected costs or a change in personal circumstances, arising from the current cost of living crisis has been launched. You can [read more details about eligibility](#), and register interest to be notified when crisis loan applications open in January.

Slice of Science 2023 is back this year with a family day on Sunday 12 March 2023. The faculty WP Team in conjunction with Warwick Institute of Engagement is seeking SEM activities and short talks suitable and engaging for all ages. If you have any questions or would like to pitch an idea, please email SEMFacultyWP@warwick.ac.uk in the first instance. More details about the event will be released soon.

To celebrate the legacy and impact of Ada Lovelace, the [Kindness Studio](#) is hosting art and AI activities involving a community of artists and scientists to celebrate her legacy on 13 March 2023 at [Somerset House](#) in London. To make this event as accessible as possible, the University of Warwick and The Alan Turing Institute can support travel to/from the event when it takes place. [Register](#) on the webpage to secure your ticket and receive support with your travel. [See more details here](#).

Sustainability

[Sustainability at Warwick Newsletter January 2022](#)

University travel booking update

We are working to make sure that the experience of booking University travel, and dealing with any subsequent issues that arise for travellers, is improved significantly.

[Read about how we've reviewed arrangements](#) with our Travel Management Company, Key Travel, and next steps.

West Midlands Bus on Demand

The West Midlands Bus on Demand allows you to book a journey and a bus will pick you up at a time and location you choose. The service has extended its operating area and time, now operating 7 days a week. [Find all the information here.](#)

January's Sustainability Bulletin includes the chance for students to sign up to be a Student Green Champion (counts towards their Warwick Award) with an event to find out more 12:00 - 13:00 24 January OC0.01 Oculus.

If you'd like to join the Psychology Green Team, more details here: [Psychology Green Team \(warwick.ac.uk\)](#)

EXHIBITION

THE WORK OF THOMAS HILLS Sonoran Desert Series

This series of 6 watercolour paintings depicts the seasonal character and atmosphere of the Sonoran desert, which covers northern Mexico, Arizona, and California. It is the wettest desert on Earth and is subject to violent thunderstorms in the form of annual summer monsoons. The moisture in the sky offers a backdrop for fantastic sunsets over a colourful kaleidoscope of plant life and geology running as far as the eye can see. It's a good place for visions.

The paintings are numbered in the order they were painted in the Autumn of 2022.

1 2 3 4 5 6



Department of Psychology Art collection
All Rights reserved: Thomas Hills

Follow us  **WARWICKPSYCHOLOGY**  **@warwickpsych**