

Psychology Bulletin

10 February 2023
22/23 Issue 15

The latest news, events & announcements from Psychology



INSIDE

News

LGBTQ+ History Month

Find out what's happening [here](#)

PhD Support group

ONLINE 14:00 Mon 13 Feb
for those not on campus
Email [Lucas](#) or [Yuqi](#) for
Teams link

Can losing consciousness help the planet?

Dr John Pickering discusses
[16:00 Thurs 16 Feb OC0.02](#)



Leave equipment/associated cables on your desk. See email from Linda of 27.1.23 for full details.

Compulsory PAT testing of all department appliances by an external contractor will take place on the following dates:
Thurs 16 Feb
Tues 21 - Thurs 23 Feb inclusive

Contact Linda Wilson or Andrew Barnacle if you anticipate any issues.

IT ISSUES:

Contact the IT Helpdesk: [Online help](#)
Email: Helpdesk@warwick.ac.uk

024 76573737 9:00 to 17:00 Mon-Fri

Emergencies

For emergencies, please call the Security Team, available 24/7, 365 days a year: (02476 5) 22222

Estates:

Use the Service Desk online for any maintenance issues:

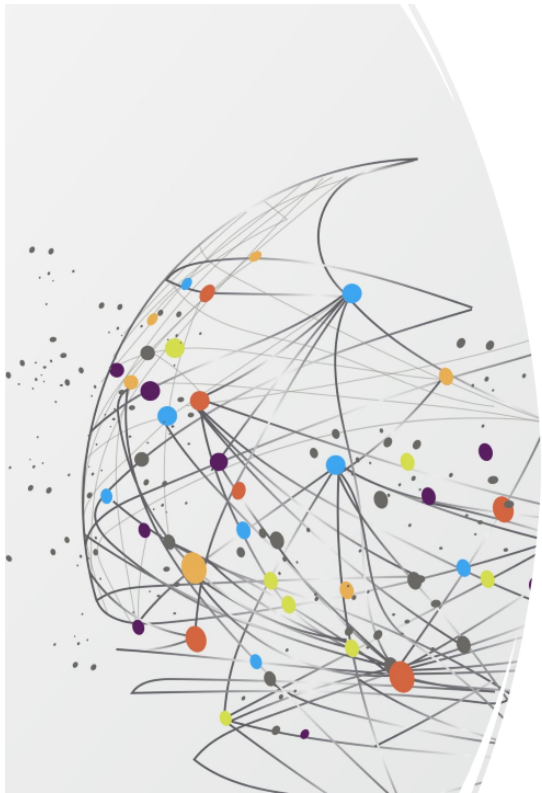
[Estates Helpdesk](#)

Phone: +44 (0)24 765 75100

Email: Estates.Servicedesk@warwick.ac.uk

Out of hours: +44 (0)24 765 22083

🔑 Spare keys are now located in H141. If the office is closed the cleaners or Estates have master keys.



Psychology

Internal Seminar Series

Wednesday 8 March

12:00 H0.44

Speaker: Dr Kristy Themelis

Prospective predictors of suicide risk in patients with chronic pain: An investigation into the role of mental defeat

Look out for the term 3 programme featuring our PhDs advertised on web Events Calendar:

<https://bit.ly/Psychevents>

Limited capacity, so first come, first served!



In term 3 we are looking forward to hearing from our 1st year PhDs. Detailed schedule [here](#).

Language and Learning Seminars T2

Contact: [Mintong Li](#)

NOTE REVISED SCHEDULE OF DATES:

Magdalena Grose-Hodge

University of Birmingham, Research Associate

12:00 Weds 1 March 2023 H0.44

Professor Cornelia Ebert

Goethe University of Frankfurt

12:00 Weds 15 March 2023 H0.44

Dr Joost Rommers

University of Aberdeen, Lecturer

12:00 Weds 17 May 2023 H0.44

Psychology

On-line Language
& Learning
Seminar Series

More details on web Events Calendar:

<https://bit.ly/Psychevents>

Email Mintong Li for Teams link



Events

JDM Reading Group - Week 5

This week's group hosted by Lucas Castillo Martin will consider "Why AI is harder than we think", M. Mitchell <https://arxiv.org/pdf/2104.12871.pdf>

Friday 10 Feb, 16.00-17.00 @ H1.04

Process and content in decisions from memory.

W.J. Zhao, R. Richie; S. Bhatia

JDM Reading Group - Week 6

Hosted by Simon T van Baal

Last week's meeting including Joyce Zhao was postponed until 17 February. Joyce will join us halfway through the reading group session to discuss her recent Psych Review paper "Process and content in decisions from memory."

Friday 17 Feb, 16.00-17.00 @ H1.04

Process and content in decisions from memory.

W.J. Zhao, R. Richie; S. Bhatia

Psychology Guest Seminars 2023



16:00 Thursday 16 February 2023 OC0.02

Dr John Pickering [Can loosing consciousness help the planet?](#)

UOW As this is of wider interest, UG students are very welcome to attend. Please promote to them and ask them to sign up [here](#)

Host: Professor Derrick Watson

16:00 Thursday 2 March 2023 H0.44

Professor Martin Pickering (title tba)
University of Edinburgh

Host: Dr Chiara Gambi

13:00 Friday 17 March 2023 H0.44

Dr Konstantinos Tsetsos (title tba)
University of Bristol

Host: Dr Emmanouil Konstantinidis

Career Events:

Following last week's well attended event, this week's PS903 lecture open to all Researchers/PhD/MPhil/MRes students is:

Bron Mills [The Media](#)

10:00 - 12:00 Monday 20 February H1.49



Psychologists are frequently featured in the media, and this can, of course, be both a good and bad thing. Just because you have only completed half of your first preliminary pilot study does not guarantee that your small conference presentation will not gain media traction, and it is therefore to know about the media process, how to interact with the media, the tricks of press releases, and some of the things to say (and not say) when that friendly hack approaches... Communication officer Bron Mills, now at Warwick but previously at the BBC and ITV, will impart her experience and wisdom. This talk is open to the first 20 students/post-docs to respond using [this form](#).

See also the [January Research Impact Newsletter](#) featuring upcoming Impact events and training, Upcoming Impact Funding Calls and some familiar faces 😊

Dates still available for academics to host a Guest Speaker either in person or on-line in February and April. Contact [Catherine](#) to check on dates.

[Faculty of Science, Engineering and Medicine Post-Doctoral Research Prizes 2023](#)

Nominations to Olga Feher

Deadline: 31 March 2023

Fondation Fyssen: Post-doctoral study grants. Deadline: 31 March 2023

Postgraduate Research Day: Date for your diary

Friday 26 May 2023



The Postgraduate Research Day is scheduled **for Friday 26 May** - save the date! This is a research presentation event to which all students on research degrees are invited (including those run in conjunction with Coventry University). This gives you the opportunity to discuss and present work in front of peers - good place to practice giving a talk / poster presentation, and hopefully also a place where to make research bonds with other PGRs who might be doing something related to your research.

Anyone who'd like to be involved in helping should contact Lucas or Yuqi in the first instance.

PG Cert in Transferable Skill in Science Courses on Offer in Term 2

Courses available include:

[Research Ethics and Practice](#)

[Decision Making and Leadership](#)

[Project Management](#)

Further information about the PG Cert in Transferable Skills in Science (PGCTSS) Programme please see our [website](#). Do not forget the Doctoral Skills Modules 1, 2 and 3 are all available in SkillsForge under the Doctoral Skills Tab.

Funding opportunity: Exploring arts and STEM subjects

Deadline 28 February 2023

Funding of up to £1,500 is now available for members of the Faculty of Science, Engineering and Medicine who are interested in undertaking work within and through culture, as part of the Connecting Cultures Global Research Priority. [Find out more and apply here by 28 February.](#)

Early Year Career Opportunity

Deadline: 6 March, 12:00 pm

Details here:

Announcement: <http://psych.uw.edu.pl/2023/02/01/konkurs-na-stanowisko-asystenta-badawczego-marie-sklodowska-curie-early-stage-researcher-call-for-applications-for-a-position-of-a-research-assistant-marie-sklodowska-curie-early-stage-researcher/>

Questions can be directed to Kalinka

Timmer kalinka.timmer@psych.uw.edu.pl

The Faculty of Psychology, University of Warsaw, is accepting applications for a full-time Early Stage Researcher position for a maximum of four months (April-July 2023). The position is part of SAPIENS, a pan-European Marie Skłodowska-Curie Innovative Training Network (EU Horizon 2020 Programme), which aims to investigate how the dynamics of early social exchanges support the development of the social brain (see: www.sapiens-itn.eu).

Warwick-Wellcome Translational Partnership



WARWICK

Applications open for Breaking Translational Barriers Awards 2023



The University of Warwick has secured an extension to the Warwick-Wellcome Translational Partnership that supports translation of research findings into improvements in human health.

Applications are accepted on a rolling basis and subject to rapid review.

Please email [Rob Hollingworth \(robert.hollingworth@warwick.ac.uk\)](mailto:robert.hollingworth@warwick.ac.uk) to discuss your requirements for funding.

Best wishes

Professor Andrew McAinsh and Professor Andrew Blanks

Partnership Operational Leads

[View this email in your browser](#)

To contact us please email: Wellcome-Translation@warwick.ac.uk

We are now requesting applications of up to £10,000 for Breaking Translational Barriers Awards

This funding is **open to all Warwick researchers aiming to improve human health** and is designed to overcome well-defined roadblocks on the path to translation of research. Following the success of our previous scheme, the Warwick-Wellcome Translational Partnership is now offering two new translational funding opportunities. See below for details on how to apply.

Details of previous projects supported by the scheme can be found on the [Wellcome Translational Partnership website](#).

Accelerator Awards (~£5-10K)

Not designed to fund research directly, [Accelerator Awards](#) will help remove discrete stopping points to translation, with it up to the applicant to define what obstacle they are currently facing and how they will use the funding to overcome this.

Eligibility:

This fund is open to all researchers at Warwick that aim to have a positive impact on human health. Accelerator Awards will not fund Warwick staff time or solely research activities.

How to apply:

Applications should be made through an [online application form](#).

Applications are accepted at any time and are reviewed on a rolling basis.

Rapid Response Awards (up to ~£1K)

In addition to larger awards, smaller [Rapid Response funds](#) are available to allow Warwick researchers to take advantage of immediate translational opportunities. This could include consultancy fees, travel and accommodation to attend meetings, hosting small workshops and events, consumables to demonstrate translational potential, and opportunities for early user engagement.

Join in with a public event and earn Warwick Award points

Volunteer to engage with the public at British Science Week or The Big Read with Warwick Institute of Engagement. These exciting events are a great chance to practise talking about your subject or interests with a variety of visitors, and to design fun activities for adults and children to enjoy. Get involved behind the scenes with event production, give a talk, dress up as a character, run a hands-on activity stall, deliver a workshop or information session and much more. Find out more [here](#) and then follow the links to express your interest. You can also do some skills training with Warwick Institute of Engagement and earn points for the Warwick Award (points not applicable to PGRs).

Wellcome Discovery Research Regional events – registration open

If you register, please inform

ResearchStrategydev@warwick.ac.uk

RIS contact: Claire Edwards

Links to information are provided below.

<https://wellcome.org/what-we-do/discovery-research/regional-events>

https://www.wellcomeevents.org/discovery_virtual

Scotland -Advanced Research Centre, **Glasgow** - Wednesday 19th of April 2023, 10:30-16:00

North-East - University of Leeds, **Leeds** - Tuesday 25th of April 2023, 10:30-16:00

London & South-East - **Central London venue, TBC** - Thursday 27th of April 2023, 10:30-16:00

London & South-East - **Central London venue, TBC** - Friday 19th of May 2023, 10:30-16:00

Virtual event - Wednesday 7th of June 2023, 11:00-17:00 BST

Warwick/UHCW Partnership Accelerator Event

08:00 – 14:00

6 March 2023

Registration

The in-person events are open to researchers based in the UK and Republic of Ireland at all career stages as well as research support staff. Please register below for your preferred location. The series of regional and national events will conclude with a virtual event so if you are unable to make it in person and/or your research is based outside the UK and Rol, please see the link for the virtual registration event below.

Wales & South-West - Apex Hotel, **Bath** - Tuesday 14th of March 2023, 10:30-16:00

Midlands - East Midlands Conference Centre, **Nottingham** - Friday 24th of March 2023, 10:30-16:00

Northern Ireland & Republic of Ireland - Queens University, **Belfast** - Tuesday 4th of April 2023, 10:30-16:00

North-West - University of Liverpool, **Liverpool** - Thursday 13th of April 2023, 10:30-16:00

The University of Warwick and University Hospitals Coventry and Warwickshire NHS Trust is hosting an in-person event from 08:00-14:00 on 6 March 2023 at the Slate, University of Warwick. The Warwick/UHCW Partnership Accelerator Event will bring together academics and clinicians in a free form event to celebrate the success of the partnership and to shape its future direction.

Sign-up for the event [here](#)

Warwick Awards for Public and Community Engagement - up to £2,000

Have you engaged the public in our learning and discovery? Warwick Institute of Engagement wants to hear about it and reward your excellent Public and Community Engagement practice. Apply for the [Warwick Awards for Public and Community Engagement](#) (WAPCE) by 26th February. Open to students and staff, individuals and teams. Students can apply for individual awards of £500 or a team award of £2,000

Masterclasses in public engagement

Warwick Institute of Engagement offers **free masterclasses** with external experts in engagement. Follow the links to find out more and book your place:

- [Talking research to the public](#) - tips, tricks and knowledge on the best (& worst) ways to present research out to the world. **Wednesday 19 April, 10am - 4pm**
- [Short Talk, Lasting Impression](#) – discover how to make your talk stand out from the crowd and how to banish nerves to give a confident performance. **Thursday 11 May, 1pm - 4pm**
- [Sharing your work with the public](#) – how to create engaging talks, videos, podcasts, activities and shows. **Friday 12 May, 9:30am - 12:30pm**
- [Become a Maths Busker](#) - learn the art of using street performance to surprise and delight passers-by with entertaining routines deeply rooted in maths. **Wednesday 21 June, 10am - 4pm**

Development of a Handbook for the Evaluation of Personalisation of Learning Approaches: Invitation to participate

Deadline for clarification questions: 24 February

National Data Science and AI Innovation Bootcamp: 16-17 February and 14 March 2023

Full details [here](#). Inform RIS if you intend to apply.

The Alan Turing Institute and the University of Warwick have collaborated to create a National Data Science and AI Innovation Bootcamp (NIB). The focus of NIB is to create commercial awareness and transferrable business skills and help individuals understand the commercial potential of their research area. The environment will be fully supported with access to expert mentors. This residential course hosted at Warwick Conferences will deliver a bootcamp of research translation skills to the National Data Science and Artificial Intelligence research community. [Find out more and apply here](#).

Warwick Education Conference and TEALfest June 2023

The best of TEALfest and the Warwick Education Conference will come together for a bonanza week of connection, engagement and inspiration in June 2023. The theme for both events will be 'Empowering Students and Staff through Small Teaching'. TEALfest (online) will run Tuesday 20 - Wednesday 21 June 2023, with Warwick Education Conference (in person) happening Thursday 22 - Friday 23 June. Please put the dates in your diary to ensure you don't miss this inspiring event. More details will follow in the new year.

Opportunity to supervise an EU-funded postdoc

Potential supervisors should submit their details by **Friday 17th February** in order to be listed as a supervisor to coincide with the opening of an expected MSCA Postdoctoral Fellowships call on 12 April 2023.

RIS contact: Claire Edwards

As part of the [EUTOPIA](#) alliance Warwick has partnered with the Universities of Gothenburg, VUB in Brussels, Cergy Paris, Ljubljana and Pompeu Fabra in Barcelona to develop a matching service for the [Marie Skłodowska-Curie Actions Postdoctoral Fellowships \(MSCA-PF\)](#) and [EUTOPIA Science and Innovation Fellowships \(SIFs\)](#).

This partnering tool aims to facilitate fruitful collaboration between excellent Marie Curie and SIF candidates and potential supervisors willing to mentor young researchers. Interested parties should complete a short online [form](#) to register as a potential supervisor and to receive expressions of interest from postdoctoral researchers from other EUTOPIA universities and associated partners. Potential supervisors should submit their details by **Friday 17th February** in order to be listed as a supervisor to coincide with the opening of an expected MSCA Postdoctoral Fellowships call on 12 April 2023.

Course bookings for 2022/23 are now open in [SkillsForge](#)

[Postgraduate Certificate in Transferable Skills in Science](#)

Researcher Development Programme

[Researcher Development 2022-2023 \(office.com\)](#)

[RD 2023 Handbook \(Spring\)-includes schedule with bookable links](#)

[RD Spring Schedule \(print version\)](#)

Race Xchange Scholarships

Deadline

28 February 2023

Co-led with Coventry University, we expect to allocate up to 7 Race XChange Scholarships, awarded to PhD applicants developing leading research on improving access and participation for minority ethnic students in postgraduate research in the UK.

The Scholarships are expected to begin in May 2023.

Applications are to be submitted via Coventry University and must be researching a Race XChange-aligned area.

Further information about the scholarships can be found on the following webpage: https://warwick.ac.uk/services/dc/schols_fund/scholarships_and_funding/racexchange/ Enquiries will be managed by Coventry University.

Warwick Doctoral Access Scholarships- Sanctuary

Deadline: 27
February 2023

Applications remain open until **27 February 2023** (23:59 GMT). Please note that this is the new name for our *Postgraduate Research Sanctuary Scholarships*.

Full details about *Warwick Doctoral Access Scholarships- Sanctuary* can be found on the following

webpage: https://warwick.ac.uk/services/dc/schols_fund/staff_guidance/pgr/otherpgrscholarships/

PhD opportunity

British Psychological Society and the Parliamentary Office for Science and Technology

The BPS are offering a 13-week fellowship to a PhD student in a psychology-related subject who are a Member of the British Psychological Society and in their penultimate or final year of study.

More details and how to apply can be found [here](#).

PGR [hardship fund](#)

Available for applications from PGRs facing exceptional financial circumstances. Other hardship support is also available, and the details can be found [here](#).

Events for new PhDs:

PGR welcome event on 28th February 2023 at 3pm [Register your interest here](#)



Fully-funded ESRC PhD Studentship with Professor Kim Wade & Dr Robert Nash

Closing date: **27 February 2023**

Find out more:

<http://bit.ly/3HI02OR>



Student newsletter:

Your student newsletter (Monday Week 4) [UG/PGT/PGR](#) - 30 January

Your student newsletter (Friday week 3) [UG](#), [PGT](#), [PGR](#) - 27 January

[Paid student research participation at Warwick \(SONA\)](#)

The Warwick SONA Research Participation Pool is a research resource supported by the Behaviour Brain and Society GRP. The pool offers students the opportunity to take part in paid behavioural research at the University. Several departments depend on the pool, with PhD projects being particularly reliant. Unfortunately, the pandemic caused significant disruption to recruitment and there are currently very low numbers of registrations. Please could departments circulate [this link](#) to UG and PG students.

The Psychology Research Skills Development Scheme (PRSDS) provides staff members, post-docs, and PhD researchers in our department an opportunity to 'recruit' undergraduate students to support their research. Some of our undergrads are incredibly keen to get hands-on experience with psychology research and to develop research skills, from running experiments, through preparing stimulus material, to setting up, piloting and analysing surveys. You can now upload an advert by filling in this form: [Psychology Research Skills Development Scheme](#). For more info about the scheme [click here](#) or contact me directly.

In addition, if you have recently recruited a student for any research or work experience opportunity, it'd be great if you could update the [UG Research&Skills tracker](#).

The [Social Mobility Student Research Hub](#) recently launched so please share this with your student networks and communities. Closing date for student applications is 19th February 2023.



Wednesday 8 March
UG Careers Conference

Contact: Dr Gitit Kadar-Satat

For your UG students:



Warwick Uni Student Opportunity @SO_Warwick · Jan 24

...

Got questions about the Warwick Award? Drop into the SO Hub in Senate House between 2-4pm every Tuesday and Wednesday this term to talk with a member of the Award team



Funding opportunities

[Funding Opportunities listed by RIS](#)

Internal and External

RIS aim to have a rota of 2 members of the team based in Psychology in **H0.38 on Wednesdays** so please pop in with any queries.

- Research Strategy and Development Manager - **Claire Edwards**
- Research Support Manager - **Andrea Howard**
- Research Development Officer - **Alex Glazer**
- Research Support Officer - **Bhavana Sharma**
- Research Support Officer - **James Barrett-Evans**
- Research Support Officer - **Parminder Matharu (0.5 FTE)**

- Research Impact Officer - **Rob Hollingsworth**

Publications

Parenting knowledge and parenting self-efficacy of mothers with borderline personality disorder and depression : "I know what to do but think I am not doing it"

Eyden, Julie, MacCallum, Fiona, Bornstein, Marc H., Broome, Matthew and Wolke, Dieter (2023) Parenting knowledge and parenting self-efficacy of mothers with borderline personality disorder and depression : "I know what to do but think I am not doing it". *Development and Psychopathology* . doi:10.1017/S095457942200147X ISSN 0954-5794. (In Press)

12:47 yesterday

Process evaluation protocol for the SLEEP study : a hybrid digital CBT-I intervention for working people with insomnia

Hurley-Wallace, A., Moukhtarian, Talarrita, Patel, K., Toro, Carla T., Russel, S., Daley, G., Walasek, Lukasz, Tang, Nicole K. Y. and Meyer, Caroline (2022) Process evaluation protocol for the SLEEP study : a hybrid digital CBT-I intervention for working people with insomnia. Discussion Paper. MedRxiv: Cold Spring Harbor Laboratory. (Unpublished)

15:38, Wed 8 Feb 2023

Digital cognitive behavioural therapy intervention in the workplace : study protocol for a feasibility randomised waitlist-controlled trial to improve employee mental well-being, engagement and productivity

Patel, Krishane, Moukhtarian, Talar Rita, Russell, Sean, Daly, Guy, Walasek, Lukasz, Tang, Nicole K. Y., Toro, Carla T. and Meyer, Caroline (2022) Digital cognitive behavioural therapy intervention in the workplace : study protocol for a feasibility randomised waitlist-controlled trial to improve employee mental well-being, engagement and productivity. *BMJ Open*, 12 (12). e060545. doi:10.1136/bmjopen-2021-060545 ISSN 2044-6055.

09:54, Wed 8 Feb 2023

Does personality predict traveling abroad as indicated by mobile phone data?

Realo, Anu, Silm, Siiri, Tiru, Margus and Allik, Jüri (2023) Does personality predict traveling abroad as indicated by mobile phone data? *Journal of Research in Personality* . 104355. doi:10.1016/j.jrp.2023.104355 ISSN 0092-6566. (In Press)

16:54, Tue 7 Feb 2023

Interventions for confabulation : a systematic literature review

Francis, Cheryl, MacCallum, Fiona and Pierce, Siân (2022) Interventions for confabulation : a systematic literature review. *Clinical Neuropsychologist*, 36 (8). pp. 1997-2020. doi:10.1080/13854046.2021.1948612 ISSN 1385-4046.

10:06, Tue 7 Feb 2023

Social inclusion and HR

Develop yourself with Warwick's staff coaches

Warwick's internal coaching scheme brings together staff qualified in or currently training in coaching and staff looking to develop themselves professionally and personally. The scheme aims to help you build self-awareness and improve your performance and potential at work. [Find out more and register your interest here.](#)

Staff Support Fund

The Staff Support Fund to help eligible employees who are struggling financially with unexpected costs or a change in personal circumstances, arising from the current cost of living crisis has been launched. You can [read more details about eligibility](#), and register interest to be notified when crisis loan applications open in January.

Widening Participation Staff and Student Conference

Wednesday 8th March: Student Voice: A Widening Participation (WP) Perspective.

A call for contributions can be found [here](#). Please consider submitting and also save the date.

Join an interactive session on [Active Bystanders in the Teaching Space](#) on Wednesday 23 February. The workshop will unpick the issue of unacceptable behaviour in the teaching space and aims to build the knowledge and confidence of participants to address it safely, using research-based active bystander principles.

The Doctoral College is keen to work with PGRs to foster a diverse, inclusive and lively research culture across all academic departments. As part of this effort, we are in the early stages of planning a **three-day programme for this summer**, during which PGRs will be able to showcase their own research and connect with their peers and experts in different fields. We welcome input from PGRs on what the programme should include and how it should be run, so if this sounds like something you would like to get involved with, please get in touch (doctoralcollege@warwick.ac.uk).

A Celebration of Ada Lovelace: 13 March 2023 (Somerset House, London)

To celebrate the legacy and impact of Ada Lovelace, the [Kindness Studio](#) is hosting art and AI activities involving a community of artists and scientists to celebrate her legacy on 13 March 2023 at [Somerset House](#) in London. To make this event as accessible as possible, the University of Warwick and The Alan Turing Institute can support travel to/from the event when it takes place. [Register](#) on the webpage to secure your ticket and receive support with your travel. [See more details here.](#)

How to *respect names*

Names are a key part of our identity, closely connecting us to our families and culture. By caring about getting someone's name right, we show respect for the individual behind the name.



There are more resources here:
warwick.ac.uk/saymyname

THE GENDER EXPRESSION FUND IS BACK - APPLY FOR UP TO £50 OF GENDER-AFFIRMING ITEMS!

Are you a trans person in need of a new binder to replace that stretched, worn-out one you've been using for a few years too many? Do you want to experiment with makeup, but have never been able to justify the cost? Do you need some gender-affirming sportswear to help keep your New Year's Resolution to exercise more often? Or do you know someone who does?

Warwick Pride, the LGBTQIA+ Association are proud to be running the second year of the **Gender Expression Fund**: a community-led fund that transgender, non-binary and gender non-conforming students can use to buy **up to £50 of gender-affirming items**, such as (but not limited to): new clothes/underwear, chest binders, breast forms, packers, wigs, affirming sports/swimwear, makeup/nail polish, pronoun badges, pride merchandise, and books.

Applications to the fund are open from **Mon 30 Jan, 9.00am to Sun 19 Feb, 11.59pm** (the end of Term 2 Week 6).

Applications will be assessed solely by transgender, non-binary and gender-diverse members of the Warwick Pride exec team.

We thank **Warwick SU** for providing the funding for this project!

All information about the fund, including the application form and timeline for the project, can be found at <https://genderexpressionfund-2022-23.carrd.co/>

Sustainability

[Sustainability at Warwick Newsletter February 2023](#)

This month's bulletin includes details of tree planting on campus, and Pop-up Sustainability Stands. In term two, members of the Sustainability team and the Transport team will be available to answer your questions, at the following timings and locations:

- Learning Grid, Rootes Building - 14th February 1300-1400
- Library (First Floor) - 23rd February 1300-1400
- Students' Union (Atrium) - 2nd March 1300-1400
- Westwood Campus (Aroma Cafe) - 15th March 1300-1400

Wednesday Warwick Wombles Litter Picks

Saturday 18 March : Easter RAWKUS event

If you want to know more, go to this link:

[RAWKUS Collection \(warwick.ac.uk\)](#)



If you'd like to join the Psychology Green Team, more details here: [Psychology Green Team \(warwick.ac.uk\)](#)

West Midlands Bus on Demand

We are delighted to inform you that the West Midlands Bus on Demand has extended its operating area and time, this now operates 7 days a week. Full information can be found [HERE](#).

Operating hours

Monday to Friday, 6am-11pm

Saturday, 8am-11pm

Sunday, 8am-3:30pm

Where will it operate?

West Midlands on Demand will operate in the surrounding areas of the University of Warwick, including Coventry, Kenilworth, Leamington Spa, Meriden, Warwick Parkway railway station, University Hospital Coventry & Warwickshire and Wellesbourne campus.

So, if you commute to campus from these areas but don't have a convenient bus service near you, then West Midlands on Demand will provide you with a flexible alternative.

Cycle Training Dates

The University has partnered with Sustrans as part of a Community Engagement Programme to provide a number of cycle training and skills sessions for the local communities hosted on main campus from November 2022 to March 2023.

Learn-to-ride sessions: These sessions are for complete beginners and will teach you balance and pedal action to get you riding and making sure you can start/stop independently.

Upcoming training dates:

16th February, 09:30-11:00

16th February, 14:00-15:30

1st March, 11:30-13:00

Cycle skills: These sessions are for people who can already ride a bike and will help to increase your skills taught include riding at different speeds, observing hazards all around whilst stationary and moving, control of the bike in different circumstances, effective use of gears, and communication including signalling. Upcoming training dates:

16th February, 11:30-13:00

1st March, 09:30-11:00

1st March, 14:00-15:30

Book your places [here](#).

From Twitter!



Anu Realo @AnuRealo · Feb 7



Here's my short piece on wanderlust recently published in @PsychToday. It's for all of you out there who are keen to start planning your next trip before the current one ends.



psychologytoday.com

The Idea of the Mobile Personality Revisited
New research reveals how personality impacts cross-border mobility.



2



9



7,632



WITHIN Study @StudyWithin · Feb 6



Our latest paper "Investigating mental defeat in individuals with chronic pain: Protocol for a longitudinal experience sampling study" is now available on BMJ Open! Read all about our sleep-tracking study methods as part of the WITHIN Study below 📄👉



bmjopen.bmj.com

Investigating mental defeat in individuals with chr...
Introduction Previous qualitative and cross-sectional research has identified a strong sense o...



Institute of Communication and Public Policy ... @ICPP... · Feb 8



Today we would like to introduce you to another #New workshop this year - a course on #WebScraping and #DataMining in R with Dr @LukaszWalasek from @warwickuni We know that this is one many of you will be excited about! #SSM2023 #ResearchMethods #MethodsTraining @PhDcourse

NEW THIS YEAR:
WEB SCRAPING AND DATA MINING IN R

21-25 AUGUST 2023 **INSTRUCTOR: DR LUKASZ WALASEK**

The aim of this course is to introduce the core concepts and methodologies for web scraping and data mining approaches in R. During the sessions, participants will learn about the sources and types of online data that can be accessed by social scientists. They will also develop new skills in how such data can be scraped/harvested/extracted. In a series of practical exercises and activities, participants will learn about managing their own big data science projects and solving challenges associated with ethical considerations, data wrangling and formatting, web crawling, and data exploration through visualisation. During the course, participants will apply their new skills as they embark on their first data mining project under the supervision of the course lead. On the completion of the course, participants will be equipped with the necessary skills to identify, extract, process, and visualise large volumes of online data.

REGISTER

Follow us



WARWICKPSYCHOLOGY



@warwickpsych