

[Subscribe](#)

[Past Issues](#)

[Translate](#) ▼

[View this email in your browser](#)



10 February 2022



Email any items you'd like to see in future bulletins to Catherine c.j.johnstone@warwick.ac.uk

Psychology Bulletin

News

[Subscribe](#)[Past Issues](#)[Translate](#)

NATIONAL STUDENT SURVEY 2022
NOW OPEN

NSS
National Student Survey

LET'S KEEP THE DIALOGUE GOING

LOVE2SHOP
voucher draw
2 x £500 | 50 x £20

warwick.ac.uk/nss



The [National Student Survey 2022 is now open](#). Find out more about how you can promote the survey to our final year undergraduate students and play your part in enhancing the student learning experience.



Find a Job **Find PhDs** Career Advice PhDs by Email



Psychology PhD Fellowships

University of Warwick - Psychology

Qualification Type:	PhD	Placed On:	3rd February 2022
Location:	Coventry	Closes:	20th March 2022
Funding for:	UK Students, EU Students, International Students		

4 Departmental PhD Fellowships

I am delighted to say that four Departmental Fellowships are now advertised on jobs.ac.uk. Please spread the word!

Three of these are open Fellowships, one is to work on a project with **Dr Suzanne Aussems**

Professor Robin Goodwin

[Subscribe](#)[Past Issues](#)[Translate](#) ▼[Find a Job](#) [Find PhDs](#) [Career Advice](#) [PhDs by Email](#)

ESRC DTP Collaborative Studentship: Legal Decision-Making, Witness Evidence, and Credibility Assessments in Refugee Status Determinations

Midlands Graduate School Doctoral Training Partnership - University of Warwick and The International Protection Appeals Tribunal, Ireland

Qualification Type:	PhD	Placed On:	24th January 2022
Location:	Coventry	Closes:	24th February 2022
Funding for:	UK Students, EU Students, International Students		

ESRC DTP Collaborative Studentship: Legal Decision-Making, Witness Evidence, and Credibility Assessments in Refugee Status Determinations

Details [here](#)

Awarded By: Midlands Graduate School ESRC Doctoral Training Partnership

Amount: Full fees (at home rate), a maintenance stipend plus support grants

Contact: **Professor Kim Wade**

Deadline: **28 February 2022**

[Find out more and apply.](#)

[Subscribe](#)[Past Issues](#)[Translate](#) ▼[Learn More](#)

Warwick International Higher Education Academy

[About Us](#) | [Get Involved](#) | [Key Themes](#) | [Activities](#) ▼ | [Funding](#) | [Guidance & Resources](#)  | [WIHEA Connect](#) ▼ | [News & Events Calendar](#) | [Get in Touch](#)

[Learning Circles](#) ▶ [Trans & Queer Pedagogies](#) ▶ [Queering University](#)

[About](#) | [News & Updates](#) | [Events](#) | [Projects](#) | [Opportunities](#) | [Guidance & Resources](#) | [Departmental Contacts](#) | [Forum](#) | [Interest Form](#) | [Anonymous Question-Answering Service](#) | [Contact](#)

Queering University



Take the Pronouns Pledge for International Pronouns Day

Take the pledge and commit to six simple yet effective actions relating to inclusive pronouns best practice.

1 2 3 4

The Queering University programme supports staff and students at Warwick to develop, implement, share and sustain queer pedagogies and perspectives. It encourages teaching & learning, pastoral, and other practices that are inclusive of trans and LGBTQIA+ people, and improves understanding in the classroom and wider university settings.

[Find out more](#)

News

[Ibi Profane's Christmas Drag Queen Story Time](#)

Fun for all the family with Ibi Profane's drag queen story time this Christmas, including How the Grinch Stole Christmas!

[Key note speech by Prof. Zethu Matebeni on Men, Masculinity and Homophobic Hate Crimes](#)

[Prof. Zethu Matebeni: who has recently been](#)

Events

Fri 11 Feb '22
5pm: [15 Years of LGBTQIA+ Activism at Warwick](#)

Thu 17 Feb '22
12pm: [Building a Trans-Inclusive University workshop](#)

Thu 03 Mar '22
12pm: [Understanding Our LGBTQIA+](#)

[Learn more](#)

EdSoc is delighted to welcome Dr. Igi Moon, Associate Tutor at the Department of Sociology, for a session on trans pedagogy and queering education! Igi's work focuses on issues of gender, sexuality and emotion in relation to psychotherapy, and spans research, publishing and political activism.

Join us on **Wednesday, 16th Feb, at 3pm** on MS Teams (link below) to hear from Igi about the issues and possibilities of a trans- and queer-inclusive pedagogy, followed by an open Q&A session. No prior knowledge required!

We are also planning to compile a set of resources for educators aiming to create a more trans-inclusive education.

[Subscribe](#)[Past Issues](#)[Translate](#)

<https://www.facebook.com/warwickedsoc/posts/378232614302855>

Kip (LGBTUA+ SSLC rep)

Warwickshire Libraries Retweeted



WM Readers' Network @WMRNetwork · 17h

Join @warkslibraries on Mon 28 Feb for a free online, open to all, author event with the brilliant writer, activist and producer of @PolariPrize @PaulBurston to mark the close of @LGBTHM
Book here:

THE CLOSER I GET
PAUL BURSTON

In Conversation with Paul Burston
Author and founder of The Polari Prize for emerging and established LGBTQ+ writers
Monday 28th February
7.30pm
via Microsoft Teams
Free

West Midlands Readers' Network
Warwickshire County Council
LOVE YOUR LIBRARY

eventbrite.co.uk
Warwickshire Libraries In Conversation with Paul Burston
Warwickshire Libraries invite you to celebrate LGBTQ+ History Month as we welcome Paul Burston for a virtual In Conversation.

International research team including a University of Warwick psychologist investigates impact of lockdown measures on 8- to 36-month-old infants across 13 countries. Read more about Dr Suzanne Aussems work [here](#).

[Subscribe](#)[Past Issues](#)[Translate](#) ▼

University of Warwick ✓ @warwickuni · 17h

😊 When we see a politician smirk, we all know exactly what it means. At least we think we do, explains @DrEBlagrove_Psy from @warwickpsych... Read our #WarwickKnowledgeCentre piece on interpreting emotional signals ➔ bit.ly/35JDiro



What's in a smirk?

Is it possible to know exactly what someone is thinking from a single facial expression? Whilst we might think the answer is yes, Dr Elisabeth Blagrove from Psychology explains why the reality might not be so simple.

Updates on Term 2 working on are the staff intranet [here](#).

EVENTS

[Subscribe](#)[Past Issues](#)[Translate](#) ▼

See Events pages of website for more ...

Psych Soc Annual Conference

Saturday 26 February 2022

Warwick campus

Interested?

Email Psych Soc President [Amy Burgoyne](#)

CALL FOR SPEAKERS

The society host an annual conference where we invite researchers to come and speak to students about their areas of study. The conference gives students the opportunity to learn about other areas of Psychology beyond their degree and to network with researchers, helping them to develop their passion for the subject.

You would be required to give a talk on any topic of your choice followed by a Q&A session giving students the opportunity to ask questions. Each talk including the Q&A will last for approximately 45 minutes. You are welcome to attend any of the other talks, I will send you a schedule of the event nearer the time.

PGR Research Day: 20 May 2022

Here from psychology postgraduates about their research.

Venue: Online

Organisers: **Sara Morales Izquierdo** and **Arij Yehya**.

Guest
Speaker
Series
2021/22



External speakers

TODAY Thursday 10 February: 16:00

Environmental & Behavioral Cascades in Infant Learning

16:00 Thursday 10 February

Professor Catherine Tamis-LeMonda

Professor of Applied Psychology,
NYU Steinhardt

Host: Dr Suzanne Aussems



Biases in judgment and decision making affect experts and novices alike, yet there is considerable variation in individual decision-making ability. To the extent that this variance reflects malleable differences, training interventions could be an effective and scalable way to debias and improve human reasoning. I report laboratory, longitudinal, and field experiments that find one-shot debiasing training interventions can substantively improve decision making by reducing trainees' commission of cognitive biases.

Participants in laboratory experiments (N = 1,076) received a single 30 to 90 minute training intervention that addressed three of six biases critical to intelligence analysis (i.e., anchoring, bias blind spot, confirmation bias, correspondence bias, representativeness, and social projection). Interventions ranged from instructional videos to serious games. Longitudinal experiments found medium to large immediate debiasing effects (games $d \geq 1.68$; videos $d \geq .69$) that persisted at least 2 months later (games $d \geq 1.11$; videos $d \geq .66$). In a field study where participants didn't know their biases were measured (N = 290), training reduced confirmatory hypothesis testing by 29% in a complex

training can improve decision making.

TODAY 14:30

10 February

Interdisciplinary talk for PhD researchers
organised by PAIS and WBS

Theme: Instrumental Variable and Difference-in- differences

Event information: Quantitative Solutions & Networking Series is an inter-disciplinary event series targeted at PhD researchers interested in advanced quantitative methods and sponsored by Warwick Doctoral College. The first event focuses on Difference-in-differences and Instrumental Variable. Fellow PhD students will deliver presentations on how they solved relevant methodological problem using those methods. Goal of the event is to showcase problem solving and promote networking among peers.

Please use the following link to sign up and find out more about the event and the series: [Quantitative Solutions & Networking Series \(warwick.ac.uk\)](https://warwick.ac.uk/quantitative-solutions-networking-series)

[Click here to sign up now!](#)

Any questions? Feel free to contact us: doctoralcollege@warwick.ac.uk

Internal Seminars

A chance to hear about the research going on in the Department from our PhDs and research staff. Organiser: Suzanne Aussems

23 Feb - Hessah Alshaalan and Weize Zhao

9 Mar - Dr Nicholas Lange

Language and Learning group Seminars

Co-ordinator: [Marta Wesierska](#)

Bi-weekly programme on alternate weeks to Internal Seminar **12:00 Wednesdays**. Details published on Events calendar and TEAMS links circulated in advance of talks to Language and Learning Group members. If interested in joining the mailing list, contact [Marta Wesierska](#).

12:00 16 February

"Processing syntax and information structure: Eye-tracking during reading evidence from a flexible word order language"

Abstract:

Sentence comprehension is rapid and seemingly effortless, which has been ascribed to the processor's use of structural heuristics (Frazier, 1987), argued to be language-universal (e.g. Aguilar & Grillo, 2021). There is accruing evidence that the processor uses semantic, pragmatic, and contextual information in addition to syntactic heuristics during incremental processing, although it often falls back on structural defaults (Hoeks et al., 2006; Carlson et al., 2009; Harris & Carlson, 2018). In this work, I explore classic phenomena from sentence processing research (the processing of ellipsis and structural ambiguity) in Estonian, a flexible word order language that optionally encodes information-structural notions syntactically. I present evidence from eye-tracking during reading that Contrastive Topic marking can rapidly override the processor's preference for syntactically simpler structure in favour of resolving information-structural dependencies. I also discuss broader challenges (and questions of interest) in teasing apart syntactic, prosodic, and contextual effects in studying the processing of flexible word order languages.

Coming soon:

12:00 2 March

Joseph Milne

Philosophy Seminars

AUTOBIOGRAPHICAL MEMORY, VALUE, AND MORAL IDENTITY

2022

Contact: Daniel Vanello

- 12/01 Fabrice Teroni (Philosophy; Geneva)**
- 26/01 Deborah Laible (Psychology; Lehigh)**
- 02/02 Robyn Fivush (Psychology; Emory)**
- 16/02 Tobias Krettenauer (Psychology; Wilfrid Laurier University)**
- 23/02 Marya Schechtman (Philosophy; Illinois at Chicago)**
- 09/03 Matthew Soteriou (Philosophy; King's College)**
- 16/03 Kristin H. Lagattuta (Psychology; UC Davis)**
- 23/03 Christoph Hoerl (Philosophy; Warwick)**
- 27/04 Shaun Nichols (Philosophy; Cornell)**
- 11/05 Monisha Pasupathi (Psychology, University of Utah)**
- 18/05 Carl Craver (Philosophy/Psychology; St. Louis, Washington)**
- 01/06 Naomi Eilan (Philosophy; Warwick)**

For more details on the above seminars, email Daniel in Philosophy:
d.vanello.1@warwick.ac.uk

[Subscribe](#)[Past Issues](#)[Translate](#) ▼

Centre for Educational Development, Appraisal and Research (CEDAR) Online Seminar Programme 2021/2022

To register, please email s.cedar@warwick.ac.uk with details of the seminars you wish to attend

Thursday 25th November 2021 (11am-12pm):

David Nickson (PhD Student, Warwick Manufacturing Group, University of Warwick)

"Predicting depression in young adults from EHR data using machine learning"

Thursday 17th February 2022 (11am-12pm):

[Dr Jo Moss](#) (University of Surrey)

"Understanding atypical patterns of autism in individuals with genetic syndromes associated with intellectual disability"

Thursday 17th March 2022 (11am-12pm):

[Dr Vaso Totsika](#) (University College London)

"The impact of COVID-19 on school non-attendance of children with neurodevelopmental conditions in the UK"

Wednesday 18th May 2022 (11am-12pm):

[Professor Mary McCarron](#) (Trinity College Dublin)

"The Irish Longitudinal Study on Ageing (TILDA) intellectual disability supplement"

Thursday 16th June 2022 (11am-12pm):

[Dr Hayley Crawford](#) (Warwick Medical School, University of Warwick)

"Identification of anxiety in people with intellectual disability: What does anxiety look like?"

UNICA – EUTOPIA TRAIN webinar & workshop: "How to engage citizens in your research?" | 15 February 2022 - 12:30-16:00.

You can find the full programme via this [link](#)

[Register here](#)



If you're working late on campus make sure you look at the lone-working policy [here](#)

24 hour Control Centre (general enquiries) 22063 or 024765 22063

Emergency (fire, police, ambulance) 22222 or 024765 22222 (save to your MOBILE!)

All calls requiring an external emergency service on campus should be made through the Control Centre on the emergency number.

Postdocs and Postgraduates



POST Fellowship Call

The Parliamentary Office for Science and Technology (POST) has launched its [Parliamentary Fellowship Scheme](#), which gives university-based researchers the opportunity to participate in a fellowship project with an office in Parliament. The fellowship projects have been proposed by a team at Parliament as a project on which academic input is needed. Projects might involve bringing expertise into parliamentary teams, informing parliamentary scrutiny, analysing and evaluating parliamentary practices, or helping to grow Parliament's academic networks. The Scheme provides a unique opportunity for researchers to learn about how research feeds into practice and the challenges faced by decision-makers, as well as increasing opportunities for researchers from all disciplines to engage and connect with people in UK Parliament.

Candidates are required to source their own funding to undertake the Fellowship, and must be able to demonstrate to POST that arrangements are being made for this at application stage. As such, any applicant requiring support from institutional funds should contact [Josh Cartwright](#) by **no later than 5pm on Friday 18 February** outlining the amount likely to be needed.



POST-DOCTORAL STUDY GRANTS

GOALS

- The aim of the FYSSEN Foundation is to encourage all forms of scientific inquiry into cognitive mechanisms, including thought and reasoning, which underlie animal and human behaviour; their biological and cultural bases, and phylogenetic and ontogenetic development.
- The selected projects will concern the following disciplines :

Ethology - Psychology
Neurobiology
Social Anthropology
Human Paleontology - Archaeology

- The Fyssen Foundation fellowship grants a maximum of 40 000 Euros per year for a first post-doc. Grants are allocated from 12 months to 24 months, not renewable.

ELIGIBILITY CRITERIA

- Have a university thesis (PhD or equivalent) for less than two years on September 1st of the year of application.
- Be under 35-years-old on the closing date of the call for projects.
- Not be installed in the host laboratory for more than 3 months at the date of Septembre 1st, 2022.
- Carry out a post-doctoral internship in a laboratory in France if the PhD was obtained in another country, or outside France if the PhD was obtained in France.
- Regarding the host laboratories located in France: the recipient will be hosted within a framework of a fixed-term contract, and will have to make sure that a convention of co-financing can be signed between the Foundation and the laboratory to reach the level of the gross salary.

TO SUBMIT YOUR FILE

Log in, from
FEBRUARY 8th, 2022

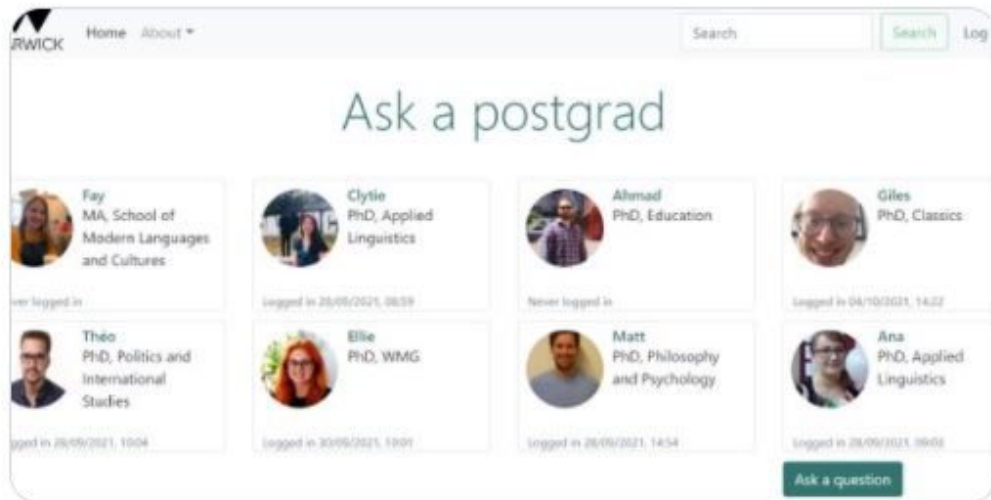
On the Foundation website
<http://www.fondationfyssen.fr>

DEADLINE
 TO SUBMIT YOUR APPLICATION:

MARCH 31st, 2022
12:00 am French time (Gmt+1)



Have you checked out our Ask a Postgrad Platform? You can find questions and answers from postgrads and ask your own @DC_Warwick @WarwickPgHub askapg.warwick.ac.uk



Warwick Researcher Development @warwickrssp · 5h

Our spring programme starts next week and runs for 10 weeks, all sessions are open for bookings on SkillsForge.

Next week we have sessions on Introduction to Researcher Development, Literature Review and Project management to name a few.

[skillsforge.warwick.ac.uk/warwick/#commo...;](https://skillsforge.warwick.ac.uk/warwick/#commo...)

Researcher Development Online

Next week we have sessions on:

- Introduction to Researcher Development
- Project Management
- Supervisor & PGR; building successful practice
- Perfectionism- it doesn't need to be perfect, it just needs to be done

Book on SkillsForge



Training Organised by Organisational Development for:

[Subscribe](#)[Past Issues](#)[Translate](#) ▼

Researcher Induction (See below)	17 February
Research Career 5 Series: How to Manage your Career	10 March
Research Staff Forum	14 March
Academic Writing Writing for Publication	6 April

[Details here](#)


Warwick Doctoral College @DC_Warwick · 2h

PGR Opportunity — Would you like to learn how to apply your research? Applications for [@warwick_id](#)'s PreCURE programme are now open!

More info in the flyer below  and here: bit.ly/3GhuiXi [@innovateuk](#)

PGR Opportunity

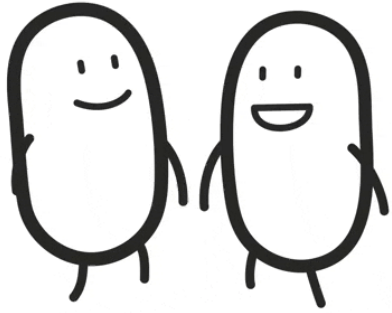
PreCURE is a 7-week sprint programme for research students from any discipline to uncover their research's Value Proposition and consider how to translate it into societal use.

Apply by 10 February!



Faculty PhD Thesis Prize 2022

Details of the scheme linked below
(nominations open 31 January 2022 should

[Subscribe](#)[Past Issues](#)[Translate ▼](#)[Learn More](#)

PhD Opportunity: Open position in the EmergentCommunity project



Funded PhD position in affective science, at Tampere University

We are looking for a PhD Researcher in affective science for the period 1.5.2022-31.12.2025. The position is funded. The doctoral researcher will focus on affective responses, including physiology and behavior, and their contribution to the experience of emotion and behavior in the daily environment. We offer a supportive and enthusiastic working environment and excellent career development opportunities in an international and interdisciplinary setting.

The deadline for applications is **27.2.2022**, at 23:59 (UTC+2). For more information, see the call: https://tuni.rekryointi.com/paikat/?o=A_RJ&jgid=1&jid=1264

[Learn more](#)



PhD Summer School on June 28-29:

"Mobility data analysis for social and environmental research"

Target group: PhD and postdoctoral researchers and master students working on or interested in conceptual, methodological, and empirical aspects of mobile big data and human mobility research.

Learn More

TEACHING

A yellow and black advertisement for the 'NATIONAL STUDENT SURVEY 2022 NOW OPEN'. It features a profile of a smiling student. Logos for 'Ipsos MORI', 'Office for Students', 'NSS National Student Survey', and 'LET'S KEEP THE DIALOGUE GOING' are present. A pink box says 'LOVE2SHOP voucher draw 2 x £500 | 50 x £20'. The URL 'warwick.ac.uk/nss' is at the bottom right.



[Subscribe](#)[Past Issues](#)[Translate ▼](#)

Thursday 10 February 2022 by the independent research company *Ipsos MORI* who run the survey. This is the most important student survey of the year and it is used in TEF submissions/ratings by the OFS.

All third year students have been invited to a group meeting TODAY Thursday 10th at 2-3 pm to discuss the NSS, Exams and Graduation.

Cultivate funding opportunity £100 to attend teaching and learning event

Apply for an Academic Development Centre call to [support colleagues in attending a teaching and learning event](#). Bids are welcomed from staff who teach and/or support student learning. Deadline for submissions is **18 February**



Research Exchange @ResearchEx · 17h

Are you a PGR who teaches? Check out some top tips on teaching from blogger Pierre in this week's post [#pgrteacher](#) [#academiclife](#) [#phdchat](#) [#studyblog](#)



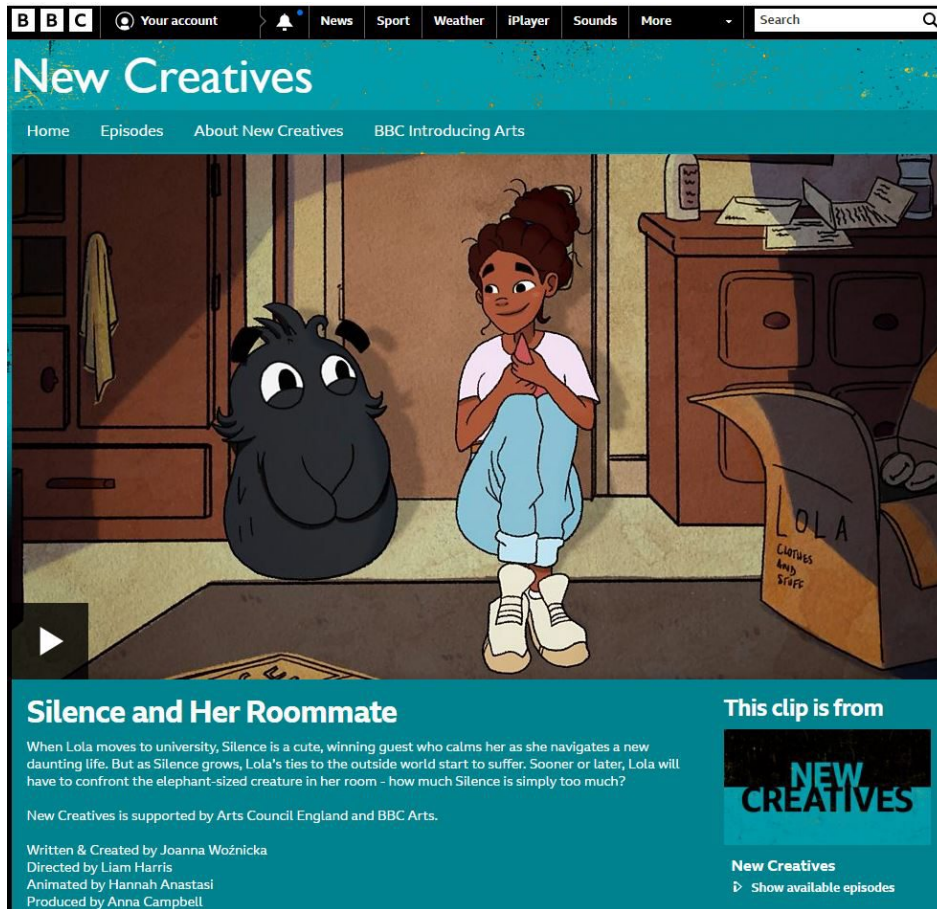
phdlife.warwick.ac.uk

Teaching what you (may not) know

Faced with an increasingly competitive academic jobs market, PGRs are often encouraged to teach alongside their research. At Warwick in any...

[News for and from your students](#)

Careers Advice for students:



BBC Your account News Sport Weather iPlayer Sounds More Search

New Creatives

Home Episodes About New Creatives BBC Introducing Arts

Silence and Her Roommate

When Lola moves to university, Silence is a cute, winning guest who calms her as she navigates a new daunting life. But as Silence grows, Lola's ties to the outside world start to suffer. Sooner or later, Lola will have to confront the elephant-sized creature in her room - how much Silence is simply too much?

New Creatives is supported by Arts Council England and BBC Arts.


Written & Created by Joanna Woznicka
Directed by Liam Harris
Animated by Hannah Anastasi
Produced by Anna Campbell

This clip is from **NEW CREATIVES**


New Creatives
▶ Show available episodes

Alumni news: Joanna Woznicka who graduated in 2019 has created a film about mental health which she wanted to share.

“In October 2020, my short film was commissioned by BBC New Creatives, to be created with Rural Media. In June 2021, we completed it and in December it finally aired on BBC Four. It's now available to watch on BBC iPlayer: <https://www.bbc.co.uk/programmes/p0b5y897>. The themes are very much to do with mental health and, in all honesty, I wrote it based on a lot of feelings I was having in my first year of university - feelings of loneliness, isolation and depression. I think it's something a lot of students will be able to relate to and it's really important to me that the message is spread. Is there any way you may be able to share it with the Psychology students (or even more widely if possible).”

 University of Warwick RetweetedCoventry Refugee and Migrant Centre  @CRMCCov · 20h ...

This week (7–13 Feb) is [#StudentVolunteeringWeek](#)! Our volunteers are a key part of our team - their invaluable support makes a huge impact on our clients in [#Coventry](#). Contact volunteering@covrefugee.org
[#studentvolunteeringweek](#) [#volunteer](#) [@warwickpolsoc](#) [@warwickuni](#)
[@covcampus](#)




**Coventry Refugee
and Migrant Centre**
Rebuilding Lives. Enabling Integration

Student Volunteering Week


7th-13th February

You can help us make a difference!

Contact volunteering@covrefugee.org
or visit www.covrefugee.org/volunteering



[Subscribe](#)[Past Issues](#)[Translate](#) ▼ VARSITY IS COMING!

That's right, our annual showdown with @cusu is BACK! Save the dates:
Friday 25th – Sunday 27th February 

We are all #TeamWarwick. Be part of it! @warwickSPORT @warwickuni



BPS Undergraduate Research Assistantship Scheme - 2022

The 2022 round of the Undergraduate Research Assistantship Scheme has now opened for applications, with a deadline of **7th March 2022**.

- Applicants must be members of the Society who are active psychology researchers employed by a UK HEI, who may then appoint an undergraduate student who is finishing the penultimate year of their degree to become their Research Assistant in the summer break before the start of the final year of their degree.
- To be eligible to receive a Research Assistantship award, students must be completing a society accredited undergraduate degree (or equivalent) in psychology; be considering research as a career; be expecting to achieve a 2.1 or a 1st class degree; and be finishing the penultimate year of their degree and due to start their final year following the completion of the project.
- The award provides a student stipend at a weekly rate of £270, for a 6-8 week project.

Anyone interested should contact awardsandgrants@bps.org.uk for full details.

Carl Bourton | Research and Impact Grants and Awards Administrator
St. Andrews House, 48 Princess Road East, Leicester, LE1 7DR
t: +44 (0)116 252 9917 m:
w: www.bps.org.uk

RESEARCH AND IMPACT

Inform Research Impact Services (RIS) if you are planning to submit a grant

If you are planning to submit a grant application soon, please let Research and Impact Services know well in advance of the deadline so that they can make sure everyone gets the support that they need.

You can do so by contacting [Andrea Howard](#) directly. Alternatively, if it is for a grant that would bring more than £50k to Psychology, you can register your plans at the department site (<https://warwick.ac.uk/fac/sci/psych/staffintranet/grants/>) as these submissions are also sent to RIS.

Adam Sanborn, Director of Research

Publication highlight

From the 29 articles published since November, our Director of Research could have chosen many, but thought the following article with **Fiona MacCallum** particular highlight:

Original Article



The Experiences and Views of Service Providers on the Mental Health and Well-Being Services for Syrian Refugees in Coventry and Warwickshire

Eleni Anastasiou¹, Helen Liebling^{2,3}, Michelle Webster³, and Fiona MacCallum¹

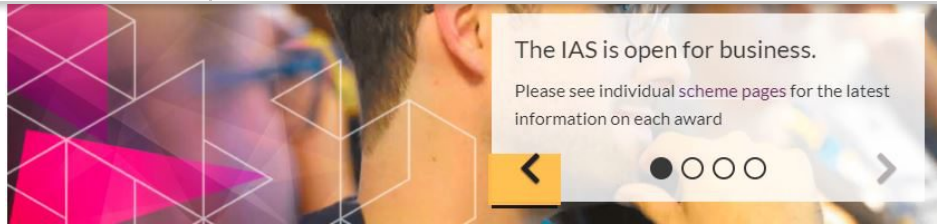
¹Department of Psychology, University of Warwick, Coventry, United Kingdom

²School of Psychological, Social and Behavioural Sciences, Coventry University, Coventry, United Kingdom

³Coventry and Warwickshire National Health Service (NHS) Trust, Coventry, United Kingdom

Abstract: Objectives: Previous literature demonstrated that, even when mental health and psychological support services are available for refugees, there may still be obstacles in accessing services. This is the first known study to explore the experiences of mental-health and well-being services for Syrian refugees in Coventry and Warwickshire, United Kingdom. The research investigates the views and perceptions of service providers on the current mental-health and well-being services provided for this population. *Methods:* Eight service providers participated in semistructured interviews and focus groups, and the data were analyzed using thematic analysis. *Results:* Three main themes emerged from an analysis of the data: "positive aspects of service delivery," "service challenges," and "recommendations for service improvements and quality." *Conclusion:* The findings bring to the fore specific gaps in current provision and interpreting services. Recommendations for proposed improvements in service provision and policy as well as clinical implications are included in this article.

Keywords: service evaluation, mental health provision, Syrian refugees



Fernandes and other research visitor funding via IAS

[Visiting Research Fellows](#) - to bring postdocs to Warwick with the aim of developing an application for an externally funded research fellowship plus other activities. Includes travel costs of up to £1000, accommodation in IAS facilities and a per diem. A great way to show commitment to both candidate and funder.

[Fernandes Fellowships](#) for those in research, tenure-track or early academic positions at European institutions (typically <10 y postdoc). These visiting fellowships offer a generous support package to host a series of visits to Warwick by academics to establish joint research and other academic activity. We currently have seven fellowships to be completed (out of 25 in total) by the end of 2022. The Fellowships offer:

- A stipend of £2,000 per month (max 3 months)
- Travel costs (including visa fees) of up to £1,000
- Research and activity costs of up to £3,000
-

[Visiting Professor/Associate Professor](#) - up to 2 months based at Warwick (may be split) over 12 months. Travel costs up to £2500 plus other support, accommodation in IAS facilities and per diem when based at Warwick. Note - this includes colleagues from business, the arts etc. This year we are particularly keen to support applications from colleagues in African nations. Termly call for applications; next deadline **3rd March 2022 at 5pm**.

[Learn More](#)

and cognition research in your area? Apply now for a SARMAC regional meeting grant! Max budget: USD3000. Deadline for applications Feb 18. sarmac.org/regional-meeti...



Open access policy event for research organisations

UK Research and Innovation (UKRI) is holding a virtual information and good practice sharing event for research organisations on **24 February 2022**, 09:00 to 12:30

Registration is now open to staff, such as librarians and research managers, responsible for supporting open access in research organisations eligible to receive UKRI funding.



[Learn More](#)

Get Creative with Sustainability

Funding call to help facilitate research impact and relationship building between researchers working on sustainability in its broadest sense

[Subscribe](#)[Past Issues](#)[Translate ▼](#)

Open to researchers at all career stages, including PhD. Also budget for small student projects.

£2750-£3750 per collaboration

Closes 10:00 Friday 18 February

[Learn More](#)



Horizon funded COORDINATE network opportunity for Transnational visits

The Horizon funded COORDINATE network (<https://www.coordinate-network.eu/>) that develops a research infrastructure of data use across Europe is advertising their first round of transnational visits to use data of studies across Europe. PhD students to Professors are eligible <https://www.coordinate-network.eu/transnational-visits>. Here the details.

Applicants can apply for bursaries of €1,250 per week to cover travel, accommodation, and subsistence during their visit.

[Subscribe](#)[Past Issues](#)[Translate ▼](#)[Learn More](#)

WIE Collaboration and Co-Production Fund



The Warwick Institute of Engagement (WIE) is seeking to support current staff and students to develop ongoing strategic relationships with local, regional, and national public partners. In time, these relationships will lead to co-production of, and collaboration in, research projects, innovation programmes and strategy, as well as collaboration on the discussion of research outcomes and the co-organisation of public engagement events.

Awards of up to £3,000 will be available, to support activities that focus on building new, or strengthening existing, relationships, with local, regional, and national community partners, groups or organisations.

Deadline: 17:00 Tuesday 15 February

[Learn More](#)

JSPS Postdoctoral Fellowships (via The Royal Society)

Deadline: **9 March 2022**

Japan Society for the Promotion of Science (JSPS) is the leading research funding agency in Japan, established by the Japanese Government for the purpose of contributing to the advancement of science. Our Postdoctoral Fellowship for Foreign Researchers (Standard) provides the opportunity for researchers based outside of Japan to conduct collaborative research activities with leading research groups at Japanese universities and research institutions for visits of between 12 to 24 months. Eligible applicants should be a UK resident and currently based at a UK university or research institution. The applicant needs to have finished their PhD at the time of applying to start their

Research fields must be within the remit of natural sciences, which includes but is not limited to biological research, chemistry, engineering, mathematics and physics. Applications for this fellowship should be submitted to The Royal Society as our nominating authority. Please visit this [web page](#) for further information.

The Royal Society - International Exchanges Scheme Round 4 open

Deadline: **9 March 2022**

<https://royalsociety.org/grants-schemes-awards/grants/international-exchanges/>

The International Exchanges Scheme offers flexible support for UK-based scientists to develop new collaborations with scientists based overseas via one-off visits or bilateral travel. The standard programme is available for travel to/from all countries outside the UK.

Newton International Fellowships Scheme 2022

Deadline: **16 March 2022**

The [British Academy](#) and the [Royal Society](#) are now inviting applications to the Newton International Fellowship scheme, funded by BEIS. The Newton International Fellowships aim to attract the most promising early-career post-doctoral researchers from overseas in the fields of the natural sciences, social sciences, and humanities from around the world. The Fellowships enable researchers to work for two years at a UK research institution with the aim of fostering long-term international collaborations. Please follow the links above to the scheme notes and any enquiries about the Newton International Fellowships can be sent to info@newtonfellowships.org

Royal Society Wolfson Fellowships programme

Deadline: **15:00 23 March 2022**

The Royal Society Wolfson Fellowships programme will enable UK Universities and Research Institutions to attract internationally outstanding leading researchers who are at the peak of their career as well as those established researchers whose career is on a steep upward trajectory to the UK's scientific community, through one of two complementary routes:

- A five-year [Royal Society Wolfson Fellowship](#), which will focus entirely on recruitment, enabling UK institutions to enhance their offering with a £300,000 fellowship award to international research leaders wishing to relocate to the UK. The Royal Society Wolfson Fellowships will enable UK Universities

[Subscribe](#)[Past Issues](#)[Translate ▼](#)

outstanding leading researchers (and their teams) to their organisation.

- A new [Visiting Fellowship](#) strand, which will allow excellent international researchers a flexible sabbatical period at a UK university or research institution with an award of up to £125,000, to build and develop international collaborations and networks with the host UK university or research institution. The fellowship can be held full time for 1 year or flexibly over 2 years. Visiting Fellow alumni will also be welcome to apply for longer term support provided by the Royal Society Wolfson Fellowship.

Enquiries about the Royal Society Wolfson Fellowships programme can be sent to seniorfellowships@royalsociety.org

Human Frontier Science Program (research grants)

<https://www.hfsp.org/funding/hfsp-funding/research-grants>

Letters of intent: 31 Mar

The Human Frontier Science Program (HFSP) promotes international and interdisciplinary collaboration (UK and Japan both eligible) in basic research focused on the elucidation of the sophisticated and complex mechanisms of living organisms.

HR

Remember to [record coronavirus absence in SuccessFactors](#) if you are self-isolating or have tested positive and let the [office](#) know.

[International travel guidance for all staff and PGR students](#)

[Subscribe](#)[Past Issues](#)[Translate](#) ▼

more about [@warwickuni](#)'s PGR sick leave policy here: bit.ly/3gAlakY



ED&I news

Call for mentors, placement opportunities and volunteers

Social Inclusion group:

Beyond Your Limits

Beyond Your Limits is the newest employability programme launched by the EY Foundation in 2021, aimed at 16–18-year-olds who are in care and still in part-time/full-time education. The programme aims to provide the skills, support, and opportunities to enable these young people to move into higher education, employment, or training. The programme is underway, starting in October 2021, and will run to June 2022.

We are looking for Business Experience hosts to support two short three day Beyond Your Limits work placements in April and May.

[Learn More](#)

Smart Futures

Smart Futures is a ten-month employability programme starting in Summer 2022. The programme will support ten, year 12, young people from low-socio economic backgrounds to develop transferable skills to take them onto further education or into employment.

- Ten Mentors – no experience necessary, training will be provided.
- Volunteer insight speakers – share information on your professional journey, including challenges and barriers you may have encountered.
- Mock Interview Panellists – help these young people prepare for the world of work.
- Business Hosts – Could you offer one of the young people a workplace experience for three days 1st – 3rd August 2022?



Anti-Racist Pedagogy and Processes in HE

Join the [WIHEA Anti-Racist Teaching Forum](#) and discover what anti-racism means for teaching in Higher Education. Learn more about the forum's learning circle origins, its members and [register for the next session on 17 February](#).

Development Opportunities

What are Organisational Development offering in term 2? February bulletin with links to sign up [here](#).

[Subscribe](#)[Past Issues](#)[Translate](#) ▼

Open Programme

Managing 'Small' Change Projects	7 February
Continuous Improvement (formerly Simplify, Collaborate and Deliver)	9 <u>AND</u> 10 February (2-day event)
Dignity and Respect at Warwick	11 February
High Performing Teams	17 February
Introduction to Committee Servicing	3 March
Every Minute Counts	3 March
Managing 'Small' Change Projects	7 March
Mentoring Skills	17 March
Challenging Inappropriate Behaviours	24 March

Wellbeing



nightline

A non-judgmental, non-advisory, confidential, student-run listening service

Call: 02476 522199 or 02476 574322

IM: warwick.nightline.ac.uk/im

Mon-Fri: 9pm-9am

Sat-Sun IM only: 9pm-1am

Drop in at our building on campus:
Free condoms, tampons, pregnancy tests, ear plugs etc

Warwick Meditation training course

Interested in mediation? Places are available on a subsidised online accredited mediator training course on 14-18 February via Warwick Mediation. No

Get 24/7 mental health and wellbeing support

Access [Togetherall](#), a safe place to talk, share and support others like you, available free to all staff and students. It's an anonymous community where you can express how you're feeling, get support and do courses at your own pace

Please reach out for support if you need it, either through your department or the [Employee Assistance Programme](#). You can also access self-help tools through the [Staff Wellbeing Hub](#) and [Wellbeing Support Services](#) (support for students).

Get some rest for your mental health

 IATL Retweeted

 **Warwick Doctoral College** @DC_Warwick · Jan 19

For [#WellbeingWednesday](#), check out the new [@warwickuni](#) 'Understanding Wellbeing' module, a podcast series you can complete in your own time: bit.ly/32dpXGB @IATL_Warwick



New Wellbeing Module on Moodle

- Learn about wellbeing from an interdisciplinary perspective
- Understand what factors influence your wellbeing
- Get to know new activities and strategies

Green Matters

Interested in finding more about Sustainability? Join the [Psychology GREEN TEAM](#)

ENVIRONMENTAL SUSTAINABILITY NEWSLETTER FOR FEBRUARY IS [HERE](#).





Green Week22

If you'd like to run an event contact:
The [Psychology Green team](#) or
sustainability@warwick.ac.uk

[Learn More](#)

Explore how we can all use cleaner, greener ways to get to, from and across campus, and discover [nine ways we are boosting energy efficiency on campus](#).



Sustainability at Warwick @WarwickUniSust · Jan 24

The university is making some changes to the parking on main campus. So if you're planning on driving to campus this may affect you. There will be new signs telling you how to pay and our location code! Read more about the changes through the link in our bio!



Coventry City of Culture update

Latest event's announced [here](#)

[Subscribe](#)[Past Issues](#)[Translate](#) ▼

powerful and emotional concert that responds to the human tragedy of war and displacement, and celebrates those who offer sanctuary and hope is on 26 Feb at [@CovCathedral](#).
buff.ly/3soUJ8y



Resonate Festival: February events

This month's festival theme is 'Health', providing lots of opportunities to learn about healthy living, food and emotional wellbeing. [Discover what's on for you to get involved with.](#)



OPENING DATE ANNOUNCED: The UK's first permanent immersive digital art gallery is opening in Coventry - and it looks incredible! 🥰

@Coventry2021 has announced that The Reel Store will open at the former Coventry Telegraph building on 13 May.

Details: bit.ly/3srhOrc



[Subscribe](#)[Past Issues](#)[Translate](#) ▼

Experiment with fabric pens, stitching and stencils. Join [@WarwickCraftSoc](#) to produce the design of your choice, in a relaxed environment.

1.30pm-4.30pm in the foyer.

[#workshopwednesdays](#)

[@warwickuni](#)



Nicola Grant is collecting used stamps for the Bone Cancer Trust



Carefully cut the stamp from the envelope or package, leaving a 1cm border around the edge. Email [Nicky](#) when you have some ready!

And finally...

Rolf report 10 Feb: I'm sitting on a lovely greeny-yellowish chair - much the colour of my eyes - in the Oculus Building. It seems the natural place for me to land. And that's the fabulous new Faculty of Arts Building over my shoulder. I love frolicking about in there. Rolf x



Copyright (C) *|2021|* *|University of Warwick Psychology Department|*. All rights reserved.

Our mailing address is:
*|c.j.johnstone@warwick.ac.uk|**|*

[Subscribe](#)

[Past Issues](#)

[Translate](#) ▼

This email was sent to c.j.johnstone@warwick.ac.uk

[why did I get this?](#) [unsubscribe from this list](#) [update subscription preferences](#)

University of Warwick · Gibbet Hill Road · Coventry, West Midlands CV4 7AL · United Kingdom

Grow your business with  **mailchimp**