

[View this email in your browser](#)



## 17 February 2022



Email any items you'd like to see in future bulletins to Catherine [c.j.johnstone@warwick.ac.uk](mailto:c.j.johnstone@warwick.ac.uk)

## Psychology Bulletin

News

The [National Student Survey 2022 is now open](#). Find out more about how you can promote the survey to our final year undergraduate students and play your part in enhancing the student learning experience.

---

Find a Job **Find PhDs** Career Advice PhDs by Email



## Psychology PhD Fellowships

University of Warwick - Psychology

<b>Qualification Type:</b>	PhD	<b>Placed On:</b>	3rd February 2022
<b>Location:</b>	Coventry	<b>Closes:</b>	20th March 2022
<b>Funding for:</b>	UK Students, EU Students, International Students		

## 4 Departmental PhD Fellowships

I am delighted to say that four Departmental Fellowships are now advertised on jobs.ac.uk. Please spread the word!

Three of these are open Fellowships, one is to work on a project with **Dr Suzanne Aussems**

**Professor Robin Goodwin**

[Learn More](#)

[Subscribe](#)[Past Issues](#)[Translate](#) ▼[Find a Job](#) [Find PhDs](#) [Career Advice](#) [PhDs by Email](#)

## ESRC DTP Collaborative Studentship: Legal Decision-Making, Witness Evidence, and Credibility Assessments in Refugee Status Determinations

**Midlands Graduate School Doctoral Training Partnership** - University of Warwick and The International Protection Appeals Tribunal, Ireland

<b>Qualification Type:</b>	PhD	<b>Placed On:</b>	24th January 2022
<b>Location:</b>	Coventry	<b>Closes:</b>	24th February 2022
<b>Funding for:</b>	UK Students, EU Students, International Students		

### **ESRC DTP Collaborative Studentship: Legal Decision-Making, Witness Evidence, and Credibility Assessments in Refugee Status Determinations**

Details [here](#)

Awarded By: Midlands Graduate School ESRC Doctoral Training Partnership

Amount: Full fees (at home rate), a maintenance stipend plus support grants

Contact: **Professor Kim Wade**

Deadline: **28 February 2022**

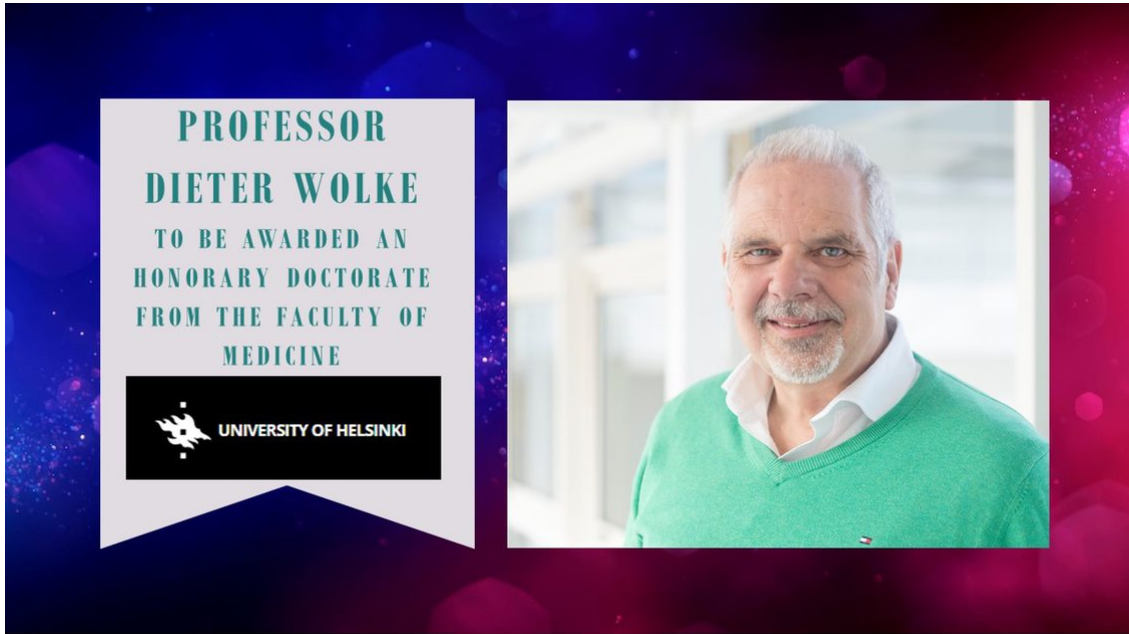
[Find out more and apply.](#)

[View the jobs.ac.uk advert](#)

[Learn More](#)

---

## Congratulations to Professor Dieter Wolke to be given



Updates on Term 2 working on are the staff intranet [here](#).

EVENTS



[Subscribe](#)[Past Issues](#)[Translate](#) ▼

## Conference

**Saturday 26 February 2022**

Warwick campus

### Interested?

Email Psych Soc President [Amy Burgoyne](#)

The society host an annual conference where we invite researchers to come and speak to students about their areas of study. The conference gives students the opportunity to learn about other areas of Psychology beyond their degree and to network with researchers, helping them to develop their passion for the subject.

You would be required to give a talk on any topic of your choice followed by a Q&A session giving students the opportunity to ask questions. Each talk including the Q&A will last for approximately 45 minutes. You are welcome to attend any of the other talks, I will send you a schedule of the event nearer the time.

## PGR Research Day: 20 May 2022

**Here from psychology postgraduates about their research.**

Venue: Online

Organisers: **Sara Morales Izquierdo** and **Arij Yehya**.

## Internal Seminars



A chance to hear about the research going on in the Department from our PhDs and research staff. Organiser: Suzanne Aussems

See Events

**23 Feb - Hessah Alshaalan and Weize Zhao****9 Mar - Dr Nicholas Lange**

[Subscribe](#)[Past Issues](#)[Translate](#) ▼

## group Seminars

Co-ordinator: [Marta Wesierska](#)

Bi-weekly programme on alternate weeks to Internal Seminar **12:00 Wednesdays**. Details published on Events calendar and TEAMS links circulated in advance of talks to Language and Learning Group members. If interested in joining the mailing list, contact [Marta](#) Wesierska.



[See Events](#)

*Coming soon:*

**12:00 2 March**

Joseph Milne

---

## Philosophy Seminars

# AUTOBIOGRAPHICAL MEMORY, VALUE, AND MORAL IDENTITY

2022

Contact: Daniel Vanello

- 12/01 Fabrice Teroni (Philosophy; Geneva)**
- 26/01 Deborah Laible (Psychology; Lehigh)**
- 02/02 Robyn Fivush (Psychology; Emory)**
- 16/02 Tobias Krettenauer (Psychology; Wilfrid Laurier University)**
- 23/02 Marya Schechtman (Philosophy; Illinois at Chicago)**
- 09/03 Matthew Soteriou (Philosophy; King's College)**
- 16/03 Kristin H. Lagattuta (Psychology; UC Davis)**
- 23/03 Christoph Hoerl (Philosophy; Warwick)**
- 27/04 Shaun Nichols (Philosophy; Cornell)**
- 11/05 Monisha Pasupathi (Psychology, University of Utah)**
- 18/05 Carl Craver (Philosophy/Psychology; St. Louis, Washington)**
- 01/06 Naomi Eilan (Philosophy; Warwick)**

For more details on the above seminars, email Daniel in Philosophy:  
[d.vanello.1@warwick.ac.uk](mailto:d.vanello.1@warwick.ac.uk)

---

[Subscribe](#)[Past Issues](#)[Translate](#) ▼

Centre for Educational Development, Appraisal and Research  
(CEDAR) Online Seminar Programme 2021/2022

To register, please email [s.cedar@warwick.ac.uk](mailto:s.cedar@warwick.ac.uk) with details  
of the seminars you wish to attend

Thursday 25<sup>th</sup> November 2021 (11am-12pm):

David Nickson (PhD Student, Warwick Manufacturing Group, University of Warwick)

"Predicting depression in young adults from EHR data using machine learning"

Thursday 17<sup>th</sup> February 2022 (11am-12pm):

[Dr Jo Moss](#) (University of Surrey)

"Understanding atypical patterns of autism in individuals with genetic syndromes associated with intellectual disability"

Thursday 17<sup>th</sup> March 2022 (11am-12pm):

[Dr Vaso Totsika](#) (University College London)

"The impact of COVID-19 on school non-attendance of children with neurodevelopmental conditions in the UK"

Wednesday 18<sup>th</sup> May 2022 (11am-12pm):

[Professor Mary McCarron](#) (Trinity College Dublin)

"The Irish Longitudinal Study on Ageing (TILDA) intellectual disability supplement"

Thursday 16<sup>th</sup> June 2022 (11am-12pm):

[Dr Hayley Crawford](#) (Warwick Medical School, University of Warwick)

"Identification of anxiety in people with intellectual disability: What does anxiety look like?"

COMMUNITY SAFETY



**Forgotten your keys/pass?  
No-one around? Call  
Community Safety:**

**24-hour Control Centre** (general enquiries)  
internal extension x22083 or 024 7652 2083

Community Safety

24 hour Control Centre (general enquiries) 22063 or 024765 22063

Emergency (fire, police, ambulance) 22222 or 024765 22222 (save to your MOBILE!)

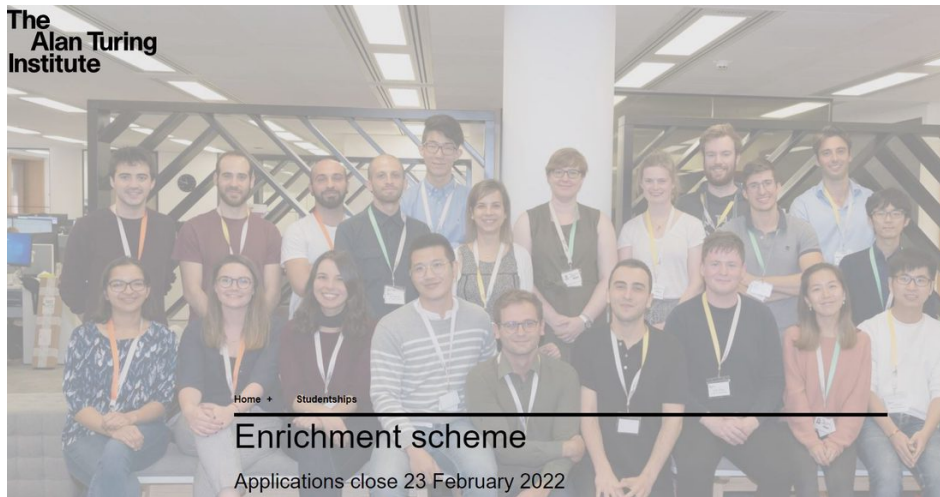
All calls requiring an external emergency service on campus should be made through the Control Centre on the emergency number.

## Postdocs and Postgraduates

# Turing Enrichment PhD Student scheme

Closing date: 23 February 2022

Learn More



## POST Fellowship Call



The Parliamentary Office for Science and Technology (POST) has launched its [Parliamentary Fellowship Scheme](#), which gives university-based researchers the opportunity to participate in a fellow. T

[Subscribe](#)[Past Issues](#)[Translate](#) ▼

[Get notified by email](#) by no later than **0pm on Friday 18 February** outlining the amount likely to be needed.

[Learn More](#)



## POST-DOCTORAL STUDY GRANTS

### GOALS

- The aim of the FYSSEN Foundation is to encourage all forms of scientific inquiry into cognitive mechanisms, including thought and reasoning, which underlie animal and human behaviour; their biological and cultural bases, and phylogenetic and ontogenetic development.
- The selected projects will concern the following disciplines :

**Ethology - Psychology**  
**Neurobiology**  
**Social Anthropology**  
**Human Paleontology - Archaeology**

- The Fyssen Foundation fellowship grants a maximum of 40 000 Euros per year for a first post-doc. Grants are allocated from 12 months to 24 months, not renewable.

### ELIGIBILITY CRITERIA

- Have a university thesis (PhD or equivalent) for less than two years on September 1<sup>st</sup> of the year of application.
- Be under 35-years-old on the closing date of the call for projects.
- Not be installed in the host laboratory for more than 3 months at the date of Septembre 1<sup>st</sup>, 2022.
- Carry out a post-doctoral internship in a laboratory in France if the PhD was obtained in another country, or outside France if the PhD was obtained in France.
- Regarding the host laboratories located in France: the recipient will be hosted within a framework of a fixed-term contract, and will have to make sure that a convention of co-financing can be signed between the Foundation and the laboratory to reach the level of the gross salary.

### TO SUBMIT YOUR FILE

Log in, from  
**FEBRUARY 8<sup>th</sup>, 2022**

On the Foundation website  
<http://www.fondationfyssen.fr>

**DEADLINE**  
**TO SUBMIT YOUR APPLICATION:**




**MARCH 31<sup>st</sup>, 2022**  
**12:00 am French time (Gmt+1)**

**Training Organised by Organisational Development for:**

[Subscribe](#)[Past Issues](#)[Translate](#) ▼

Researcher Induction (See below)	17 February
Research Career 5 Series: <a href="#">How to Manage your Career</a>	10 March
<a href="#">Research Staff Forum</a>	14 March
Academic Writing <a href="#">Writing for Publication</a>	6 April

[Details here](#)

  University of Warwick and Warwick Postgraduate Teaching Community liked **Warwick Doctoral College @DC\_Warwick** · 4h 

Can you present your thesis in just 3 minutes? One static slide, no props, and no materials – just you!  
Join our Mini 3MT competition to practice for [@warwickuni](#)'s official [@3MT\\_official](#) competition in June.

Find more info and submit your video here: [bit.ly/3gwGOYv](https://bit.ly/3gwGOYv)

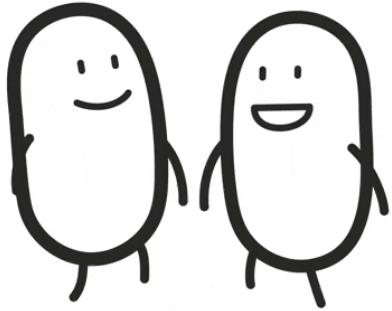


PGR Opportunity

**Mini 3MT Competition**

Submit your video by  
11 March 2022!

**Faculty PhD Thesis Prize**

[Subscribe](#)[Past Issues](#)[Translate](#) ▼

Details of the scheme linked below (nominations open 31 January 2022 should be sent to [PsychologyPG@warwick.ac.uk](mailto:PsychologyPG@warwick.ac.uk) by 31 March).

[Learn More](#)

**Warwick Postgrad Hub** @WarwickPgHub · 1h

We're running a new event! Join the roundtable session next week on 23 Feb 3-4pm with other PhD students and know about their journey and motivation.

[warwick.ac.uk/services/libra...](http://warwick.ac.uk/services/libra...)

**On Track**  
for postgrads →  
**Roundtable Session**  
23 Feb (Wed) 3-4PM

**What it is like doing a PhD?**

Wondering what it might be like to do a PhD?  
Find out more about our mentors' journeys and motivation of being PhD students.

**PG Community Engagement Team**

THE LIBRARY

@WarwickPGHub  
@WarwickPGHub  
warwick.ac.uk/pghub

## PhD Opportunity: Open position in the EmergentCommunity project

[Subscribe](#)[Past Issues](#)[Translate](#) ▼

### Funded PhD position in affective science, at Tampere University

The deadline for applications is **27.2.2022**, at 23:59 (UTC+2). For more information, see the call: [https://tuni.rekrytointi.com/paikat/?o=A\\_RJ&jgid=1&jid=1264](https://tuni.rekrytointi.com/paikat/?o=A_RJ&jgid=1&jid=1264)

[Learn more](#)

### PhD Summer School on June 28-29:

[Learn More](#)[TEACHING](#)

Subscribe

Past Issues

Translate ▼



National Student Survey

LET'S KEEP THE DIALOGUE GOING

LOVE2SHOP  
voucher draw  
2 x £500 | 50 x £20

warwick.ac.uk/nss

ipeds  
Office for Students  
hcfcw  
Economy  
Scottish Funding Council



Dr Théo Aiolfi @TheoAiolfi · 20h

I am organising with @IATL\_Warwick a series of three teaching workshops exploring the way power is performed in law, education and science @warwickuni in two weeks.

Feel free to share among colleagues and students, and attend if you are curious!

[warwick.ac.uk/fac/cross\\_fac/...](https://warwick.ac.uk/fac/cross_fac/...)

**IATL Teaching Workshops in week 8: Power in Motion**

Free lunch provided  
Register on  
[https://warwick.ac.uk/fac/cross\\_fac/iatl/](https://warwick.ac.uk/fac/cross_fac/iatl/)

Three workshops organised by Dr Théo Aiolfi on the links between power and performance:

1. **Performing Justice: Power and Law** (Monday 28/02 from 10AM to 1PM)
2. **Performing Authority: Power and Education** (Wednesday 02/03 from 10AM to 1PM)
3. **Performing Expertise: Power and Science** (Friday 04/03 from 10AM to 1PM)

## Cultivate funding opportunity £100 to attend teaching and learning event

Apply for an Academic Development Centre call to support colleagues in attending a teaching and learning event. Bids are welcomed from staff who teach and/or support student learning. Deadline for submissions is **18 February**

## Teaching staff and GTAs: Request for thoughts on Active Bystander training

This is part of the WIHEA-funded project '[Active Bystanders in the Teaching Space](#)'. This is a project set up by the university's [Community Values Education Programme](#) to develop training materials and resources to help teaching staff become 'active bystanders' in the classroom. We already offer training courses to UG/PGT students but there is currently little provision for PGRs and academic staff.

If you would be happy to respond, please complete the form they have created at <https://forms.office.com/r/Yt1cGquNts> by 25th February.

---

## News for and from your students

# Careers Advice for students: Siobhan Qadir, Careers Adviser

---



## Psychology Research Skills Development Scheme (PRSDS)

New PRSDS project '- Language learning study'. Students Apply by 25 February at 9:00am.

For more information about the project: visit this webpage:

[https://warwick.ac.uk/fac/sci/psych/placement/current\\_students/prsds/prsds\\_21\\_22\\_mc.pdf](https://warwick.ac.uk/fac/sci/psych/placement/current_students/prsds/prsds_21_22_mc.pdf)

Contact: Gitit Kadar-Satat

[Learn More about PRSDS](#)

---

## Undergraduate Research Support

22 Psychology students have benefitted from this scheme since 2016.

[Subscribe](#)[Past Issues](#)[Translate ▼](#)

students to carry out an interdisciplinary summer research or public engagement project.

[Learn more here](#)



**Warwick Uni Student Opportunity @SO\_Warwick · 1h** ...

Are you interested in creating a fairer society and improving the life chances and prospects of vulnerable groups/individuals? Do you want to make a difference? Come along to hear from individuals working to help others

[ow.ly/As6650HWrhq](https://ow.ly/As6650HWrhq)

[#uowcareersfest](#) [#uowlegalstreet](#)



Did you know that female Psychology undergraduates make up 5% of the total female student population? Over the last 4 years 23 of our students have taken part in the UG Sprint programme. Applications open for March 2022. Closing date 20 February.

Subscribe

Past Issues

Translate ▼

2022 are now open to all current female UG students - closing date 20th February [warwick.ac.uk/services/skill...](http://warwick.ac.uk/services/skill...)



**Warwick Uni Student Opportunity** @SO\_Warwick · 16m

...

How do you present the experience you have gained at university to an employer [#WarwickCareersblog](#)

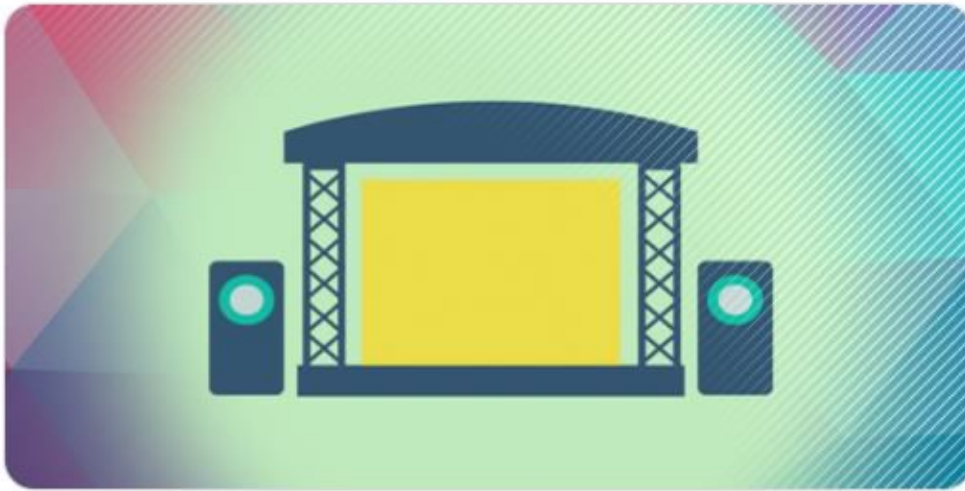


[careersblog.warwick.ac.uk](http://careersblog.warwick.ac.uk)

How to turn university work into experience on your CV

How do you present the experience you have gained at university to an employer?

Hear from employers keen to support students, and from Warwick graduates who represent a range of our LGBTQ+ community.  
[myadvantage.warwick.ac.uk/students/event...](https://myadvantage.warwick.ac.uk/students/event...)  
[#uowcareersfest](#) [#uowmainstage](#)



### BPS Undergraduate Research Assistantship Scheme - 2022

The 2022 round of the Undergraduate Research Assistantship Scheme has now opened for applications, with a deadline of **7th March 2022**.

- Applicants must be members of the Society who are active psychology researchers employed by a UK HEI, who may then appoint an undergraduate student who is finishing the penultimate year of their degree to become their Research Assistant in the summer break before the start of the final year of their degree.
- To be eligible to receive a Research Assistantship award, students must be completing a society accredited undergraduate degree (or equivalent) in psychology; be considering research as a career; be expecting to achieve a 2.1 or a 1st class degree; and be finishing the penultimate year of their degree and due to start their final year following the completion of the project.
- The award provides a student stipend at a weekly rate of £270, for a 6-8 week project.

Anyone interested should contact [awardsandgrants@bps.org.uk](mailto:awardsandgrants@bps.org.uk) for full details.

**Carl Bourton** | Research and Impact Grants and Awards Administrator  
St. Andrews House, 48 Princess Road East, Leicester, LE1 7DR  
t: +44 (0)116 252 9917 m:  
w: [www.bps.org.uk](http://www.bps.org.uk)

Subscribe

Past Issues

Translate

22nd March. The deadline to apply is Friday 4th March.

Find out if you are eligible here:

[warwick.ac.uk/study/outreach.....](http://warwick.ac.uk/study/outreach.....)

Apply here :

[warwick.co1.qualtrics.com/jfe/form/SV\\_cS.....](http://warwick.co1.qualtrics.com/jfe/form/SV_cS.....)



Foxford School and 9 others



**Warwick Uni Library** @warwicklibrary · 2h

Often notice yourself getting achy whilst studying?

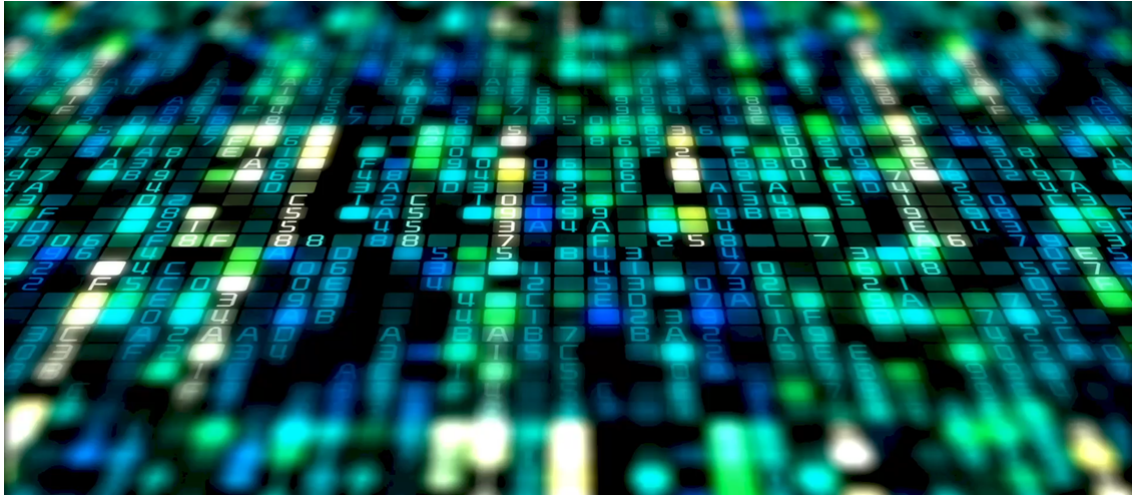
Next Friday from 3-4pm, we will be running Deskercise sessions with @warwick sport in the Teaching Grid!

These 30min slots will help to relieve tension caused by sitting at a desk, and teach you how to avoid future aches! 🚗

**Study Happy  
Active  
Deskercise**

**Fri 18 Feb  
3:00 and 3:30 pm  
Teaching Grid, Library floor 2**

#StudyHappy @WarwickLibrary @WarwickSport



## Don't forget



Inform Research Impact Services (RIS) if you are planning to submit a grant.

You can do so by contacting [Andrea Howard](#) directly. Alternatively, if it is for a grant that would bring more than £50k to Psychology, you can register your plans at the department site as these submissions are also sent to RIS.

[Register Grants here](#)

---

## University-supported tickets to participate in AI UK2022 event

Warwick would like to offer a support of university-funded tickets to Researchers wanting to access AI UK this year. We welcome applications from research areas that are not conventionally associated to Turing, as well as other AI/data sci related areas. This opportunity is open to academics, postdocs, and students.

Places are limited for the offer of **Free** Ticket entry so please submit your Expression of Interest to: [AlanTuringResearch@warwick.ac.uk](mailto:AlanTuringResearch@warwick.ac.uk) by the **deadline of the 1st of March 2022**. (Ticket Application form attached). An internal selection to be organised if we receive large number of interests.

If you have questions, please contact to [AlanTuringResearch@warwick.ac.uk](mailto:AlanTuringResearch@warwick.ac.uk)

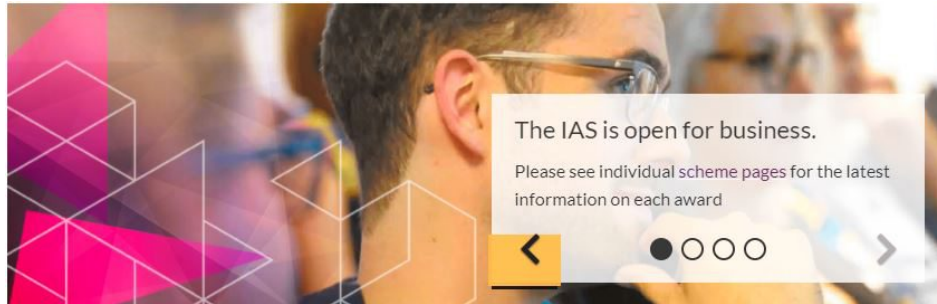
---

## Help shape the Energy GRP's priorities from

[Subscribe](#)[Past Issues](#)[Translate](#) ▼

What's important to you and your research community? In the next six months, the [Energy Global Research Priority \(GRP\)](#) is aiming to deliver a series of events designed in collaboration with Warwick Energy researchers. We need your help in doing so, so we would appreciate it if you could fill out a quick survey to help shape these webinars, in terms of content, research areas and delivery methods: <https://warwick.ac.uk/research/priorities/energy-grp/survey/>

---



## Fernandes and other research visitor funding via IAS

[Visiting Research Fellows](#)

[Fernandes Fellowships](#)

[Visiting Professor/Associate Professor](#) - Termly call for applications; next deadline **3rd March 2022 at 5pm**.

[Learn More](#)

---

## Get Creative with Sustainability

Funding call to help facilitate research impact and relationship building between researchers working on sustainability in its broadest sense (think SGDs), regional organisations and the local creative sector.

Open to researchers at all career stages, including PhD. Also budget for small student projects.

[Subscribe](#)[Past Issues](#)[Translate](#) ▼

Closes 10:00 Friday 18 February

[Learn More](#)

### Horizon funded COORDINATE network opportunity for Transnational visits



The Horizon funded COORDINATE network (<https://www.coordinate-network.eu/>) that develops a research infrastructure of data use across Europe is advertising their first round of transnational visits to use data of studies across Europe. PhD students to Professors are eligible <https://www.coordinate-network.eu/transnational-visits>. Here the details.

Deadline for 1st round **25 February**

[Learn More](#)

### JSPS Postdoctoral Fellowships (via The Royal Society)

Please visit this [web page](#) for further information.

Deadline: **9 March 2022**

### The Royal Society - International

<https://royalsociety.org/grants-schemes-awards/grants/international-exchanges/>

The International Exchanges Scheme offers flexible support for UK-based

[Subscribe](#)[Past Issues](#)[Translate](#) ▼

## Round 4 open

Deadline: **9 March 2022**

## Newton International Fellowships Scheme 2022

Deadline: **16 March 2022**

visits or bilateral travel. The standard programme is available for travel to/from all countries outside the UK.

The [British Academy](#) and the [Royal Society](#) are now inviting applications to the Newton International Fellowship scheme, funded by BEIS. The Newton International Fellowships aim to attract the most promising early-career post-doctoral researchers from overseas in the fields of the natural sciences, social sciences, and humanities from around the world.

## Royal Society Wolfson Fellowships programme

Deadline: **15:00 23 March 2022**

The Royal Society Wolfson Fellowships Programme offers collaborations through one of two complementary routes:

- A five-year [Royal Society Wolfson Fellowship](#),
- A new [Visiting Fellowship](#) strand

Enquiries about the Royal Society Wolfson Fellowships programme can be sent to [seniorfellowships@royalsociety.org](mailto:seniorfellowships@royalsociety.org)

## Human Frontier Science Program (research grants)

Letters of intent: 31 Mar

<https://www.hfsp.org/funding/hfsp-funding/research-grants>

The Human Frontier Science Program (HFSP) promotes international and interdisciplinary collaboration (UK and Japan both eligible) in basic research focused on the elucidation of the sophisticated and complex mechanisms of living organisms.

and cognition research in your area? Apply now for a SARMAC regional meeting grant! Max budget: USD3000. Deadline for applications Feb 18. [sarmac.org/regional-meeti...](https://sarmac.org/regional-meeti...)



### Calls for participants:



**Dr Marion Coumel** @marioncoumel · 6h



Hi teachers! @AlexandraSchurz and I are searching for primary school teachers teaching in Austria, France, Spain or Sweden to fill an (~20min) online questionnaire on English language teaching practices. If you can take part or share, here is the link:

[warwickpsych.qualtrics.com/jfe/form/SV\\_8c...](https://warwickpsych.qualtrics.com/jfe/form/SV_8c...)

### Do you have a long term health condition?

A Trainee Clinical Psychologist, Dr Selina Wolke, at University of Royal Holloway is looking for participants (staff or students) who have a long term health condition (e.g. chronic pain, diabetes, IBS, cancer etc.).

[https://rhulpsychology.eu.qualtrics.com/jfe/form/SV\\_6A22Y4aQHmrsMaq](https://rhulpsychology.eu.qualtrics.com/jfe/form/SV_6A22Y4aQHmrsMaq)

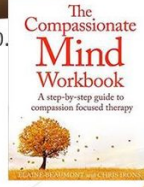
Learn More

### improve self-compassion and acceptance?

If so, we would like to invite you to take part in our **online** research study.

If you take part, you will be offered a free **4 week** training called **Compassionate Mind Training** (30mins per week - videos and exercises)

You will also be entered into a **prize draw** to win £100.



UNIVERSITY OF LONDON

If you are interested, please go to the link/ scan the QR code/ email

[https://rhulpsychology.eu.qualtrics.com/jfe/form/SV\\_5A22Y4aQHm'sMag](https://rhulpsychology.eu.qualtrics.com/jfe/form/SV_5A22Y4aQHm'sMag)



compassionstudy2021@gmail.com  
for further information.

HR

Remember to record coronavirus absence in SuccessFactors if you are self-isolating or have tested positive and let the office know.

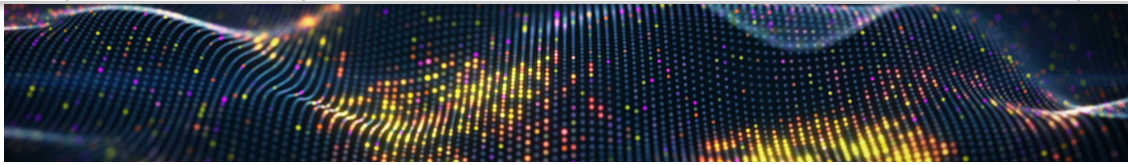


## Planning to travel?

[International travel guidance for all staff and PGR students](#)

Travel Business Insurance

ED&I news



### Warwick International Higher Education Academy

[About Us](#) | [Get Involved](#) | [Key Themes](#) | [Activities](#) | [Funding](#) | [Guidance & Resources](#) | [WIHEA Connect](#) | [News & Events Calendar](#) | [Get in Touch](#)  
[Learning Circles](#) | [Trans & Queer Pedagogies](#) | [Queering University](#)  
[About](#) | [News & Updates](#) | [Events](#) | [Projects](#) | [Opportunities](#) | [Guidance & Resources](#) | [Departmental Contacts](#) | [Forum](#) | [Interest Form](#) | [Anonymous Question-Answering Service](#) | [Contact](#)

### Queering University

**Take the Pronouns Pledge for International Pronouns Day**

Take the pledge and commit to six simple yet effective actions relating to inclusive pronouns best practice.

1 2 3 4

The Queering University programme supports staff and students at Warwick to develop, implement, share and sustain queer pedagogies and perspectives. It encourages teaching & learning, pastoral, and other practices that are inclusive of trans and LGBTQIA+ people, and improves understanding in the classroom and wider university settings.

**Find out more**

- #### News
- [Ibi Profane's Christmas Drag Queen Story Time](#)  
Fun for all the family with Ibi Profane's drag queen story time this Christmas, including How the Grinch Stole Christmas!
  - [Key note speech by Prof. Zethu Matebeni on Men, Masculinity and Homophobic Hate Crimes](#)  
Prof. Zethu Matebeni, who has recently been

- #### Events
- Fri 11 Feb '22**  
5pm: [15 Years of LGBTQIA+ Activism at Warwick](#)
  - Thu 17 Feb '22**  
12pm: [Building a Trans-Inclusive University workshop](#)
  - Thu 03 Mar '22**  
12pm: [Understanding Our LGBTQIA+](#)

Free event: Say my name

What is the role of names in building inclusive communities? The harm caused by having our names avoided, changed, or mispronounced is often underestimated. Join our virtual symposium this Friday to learn more(10am-12.30pm)

[bit.ly/3rPkHTE](https://bit.ly/3rPkHTE)



the british psychological society

Sign in Contact us



For the Public

For our Members

News

Policy

Events

About Us

Join Us

Events

# Psychology of Women and Equalities Section Annual Conference 2022

Wednesday 6th July – Friday 8th July 2022

About Submissions Registration Contact

The 2022 POWES conference will showcase feminist scholarship in a collegiate and friendly environment.

We would like to warmly welcomes anyone interested in research on gender and sexuality related topics, at any stage of their career.

This year we have three overarching themes: **Gender at work, Intersectionalities, and Feminism on the ground.**

We also welcome empirical and theoretical work, and would be delighted to consider submissions from a range of areas relevant to the work of POWES including but not limited to: *theorising feminisms, femininities, masculinities, non-binary gender, gender identities, parenting, gender violence and sexual exploitation, sexualities, mental health, health, sport, education, work, qualitative/critical methodologies, social justice, activism, race, disability, class, and intersectionality.*



## Social Inclusion group:

### Beyond Your Limits

is the newest employability programme launched by the EY Foundation in 2021, aimed at 16–18-year-olds who are in care and still in part-time/full-time education. The programme aims to provide the skills, support, and opportunities to enable these young people to move into higher education, employment, or training.. The programme is underway, starting in October 2021, and will run to June 2022

We are looking for Business Experience hosts to support two short three day Beyond Your Limits work placements in April and May.

[Learn More](#)



### Smart Futures

**Smart Futures** is a ten-month employability programme starting in Summer 2022. The programme will support ten, year 12, young people from low-socio economic backgrounds to develop transferable skills to take them onto further education or into employment.

- Ten Mentors – no experience necessary, training will be provided.
- Volunteer insight speakers – share information on your professional journey, including challenges and barriers you may have encountered.
- Mock Interview Panellists – help these young people prepare for the world of work.
- Business Hosts – Could you offer one of the young people a workplace experience for three days 1st – 3rd August 2022?

[Learn More](#)

Development Opportunities

**What are Organisational Development offering in term 2? February bulletin with links to sign up [here](#).**

[Subscribe](#)[Past Issues](#)[Translate](#) ▼

<a href="#">Introduction to Committee Serving</a>	3 March
<a href="#">Every Minute Counts</a>	3 March
<a href="#">Managing 'Small' Change Projects</a>	7 March
<a href="#">Mentoring Skills</a>	17 March
<a href="#">Challenging Inappropriate Behaviours</a>	24 March

Wellbeing



Subscribe

Past Issues

Translate ▼



*nightline*

**A non-judgmental, non-advisory, confidential, student-run listening service**

Call: 02476 522199 or 02476 574322

IM: [warwick.nightline.ac.uk/im](https://warwick.nightline.ac.uk/im)

Mon-Fri: 9pm-9am

Sat-Sun IM only: 9pm-1am

Drop in at our building on campus: Free condoms, tampons, pregnancy tests, ear plugs etc



Warwick Sport @warwicksport · 20h

With different routes to reach the top, we want everyone to be able to experience the climb. Find out the ways to climb at the Sports and Wellness Hub.

[bit.ly/3oxO5LN](https://bit.ly/3oxO5LN)



### Get 24/7 mental health and wellbeing support

Access [Togetherall](#), a safe place to talk, share and support others like you, available free to all staff and students. It's an anonymous community where you can express how you're feeling, get support and do courses at your own pace

Please reach out for support if you need it, either through your department or the [Employee Assistance Programme](#). You can also access self-help tools through the [Staff Wellbeing Hub](#) and [Wellbeing Support Services](#) (support for students).

### Get some rest for your mental health

Subscribe

Past Issues

Translate

WARWICK

Mental health charity @cwmind is coming to campus on Friday!  
Come to the @WarwickSU Atrium between 12pm and 2pm to meet the team and find out about local wellbeing and mental health resources & support.



Green Matters



Warwick Uni Library @warwicklibrary · 1h

Join Study Happy and Warwick Plant & Nature Society on Thurs 24th Feb to celebrate the changing seasons with leaf-pressing, planter-decorating and more! 🌱

Drop in from 1:30-3:30pm in the Seminar Room, Library Floor 2. All students are welcome!

[warwick.ac.uk/services/libra...](http://warwick.ac.uk/services/libra...)

Welcome the new season with decorated planters, leaf-pressing and more!

Spring Crafts

Thursday 24th Feb  
1:30-3:30pm

Seminar Room  
Library, Floor 2

#StudyHappy @WarwickLibrary @WarwickPlantSoc

Interested in finding more about Sustainability? Join the [Psychology GREEN TEAM](#)

[Subscribe](#)[Past Issues](#)[Translate](#) ▼

## Green Week22

If you'd like to run an event contact:  
The [Psychology Green team](#) or  
[sustainability@warwick.ac.uk](mailto:sustainability@warwick.ac.uk)

[Learn More](#)

Explore [how we can all use cleaner, greener ways to get to, from and across campus](#),  
and discover [nine ways we are boosting energy efficiency on campus](#).

---

## Coventry City of Culture update

Latest event's announced [here](#)

[Subscribe](#)[Past Issues](#)[Translate ▼](#)

powerful and emotional concert that responds to the human tragedy of war and displacement, and celebrates those who offer sanctuary and hope is on 26 Feb at [@CovCathedral](#).  
[buff.ly/3soUJ8y](https://buff.ly/3soUJ8y)



### Resonate Festival: February events

This month's festival theme is 'Health', providing lots of opportunities to learn about healthy living, food and emotional wellbeing. [Discover what's on for you to get involved with.](#)



### **Nicola Grant is collecting used stamps for the Bone Cancer Trust**



Carefully cut the stamp from the envelope or package, leaving a 1cm border around the edge. Email [Nicky](#) when you have some ready!

## And finally...

[Subscribe](#)[Past Issues](#)[Translate](#) ▼

Order your free window-decorating kit now and get ready for 12-25 March when it's our time in the spotlight for [@Coventry2021](#) Window Wanderland!

👉 [bit.ly/3Jj08os](https://bit.ly/3Jj08os)

📌 & Don't miss [#WarwickPresents](#): One Night of Wander on 12.3. 👉  
[bit.ly/3rEzRe7](https://bit.ly/3rEzRe7)



Copyright (C) \*|2021|\* \*|University of Warwick Psychology Department|\*. All rights reserved.

Our mailing address is:  
\*|c.j.johnstone@warwick.ac.uk|\*\*|\*

This email was sent to [c.j.johnstone@warwick.ac.uk](mailto:c.j.johnstone@warwick.ac.uk)  
[why did I get this?](#) [unsubscribe from this list](#) [update subscription preferences](#)  
University of Warwick · Gibbet Hill Road · Coventry, West Midlands CV4 7AL · United Kingdom

[Subscribe](#)

[Past Issues](#)

[Translate](#) ▼

Grow your business with  **mailchimp**