

[View this email in your browser](#)



3 March 2022



Email any items you'd like to see in future bulletins to Catherine c.j.johnstone@warwick.ac.uk

Psychology Bulletin

News

Covid-19 guidance: update 22 February

Following the latest Government announcement [here](#) is the University's position. All present guidance will continue as is until the end of Term 2.



[Subscribe](#)[Past Issues](#)[Translate ▼](#)

diverse PhD studentships

Call for expressions of interest in supervising a PGR on this programme.

Please send your one page expression of interest, detailing provisional research areas of interest to **Rhiannon Martyn** (r.martyn@warwick.ac.uk) by the end of **Monday 7th March**.

collaborative project that we have established with Coventry to improve access and participation at PhD level for ethnically diverse people, creating a broad research team of PGRs, mentors & supervisors.

The research carried out should contribute in some way to advancement of, knowledge and understanding of the issues and opportunities to improve access and participation levels for BAME PGRs. The PGRs will be registered with the Centre for Interdisciplinary Methodologies but this call is open to potential supervisors in any academic department who could support a PGR researching in this broad area.

PhD Fellowship in Psychology of Belief

PhD Fellowship mainly funded by The John Templeton Foundation will be available for students wishing to start a PhD in October 2022

Details [here](#).

Deadline: **31 March 2022**

This fellowship is specifically for a project supervised by [Dr Jesse Preston](#) and is supported by a grant from The John Templeton Foundation, awarded to Jesse Preston. Further details of this project can be found by following the [academic staff link](#). Candidates should have a strong interest in research in psychology of belief with an experimental social-psychological approach. Example topics in this area include attitudes towards science, religious belief, conspiracy beliefs, and moral judgment. The fellowship holder will conduct research on science attitudes as outlined in the grant award and develop new research in collaboration with Dr. Preston as their supervisor.

[Subscribe](#)[Past Issues](#)[Translate](#) ▼[Find a Job](#) [Find PhDs](#) [Career Advice](#) [PhDs by Email](#)

Psychology PhD Fellowships

University of Warwick - Psychology

Qualification Type:	PhD	Placed On:	3rd February 2022
Location:	Coventry	Closes:	20th March 2022
Funding for:	UK Students, EU Students, International Students		

4 Psychology Departmental PhD Fellowships

[Learn More](#)

In the news:

Well done from all in Psychology to PhD Arij Yehya, supervised by Anu Realo, who has been in the news for receiving the [L'Oréal- UNESCO For Women in Science 2021 young talent award in the Middle East](#).



[Subscribe](#)[Past Issues](#)[Translate](#) ▼

Come along to the [@WarwickSU](#) Atrium on Thursday from 12pm until 3pm to learn ways to improve your mental health with our Wellbeing team, as well as refreshments and giveaways!

Find out more: warwick.ac.uk/services/wss/s...

[@warwicklibrary](#)



Friederike's
Coffee and Catch
up on Zoom
c 10:30 daily
link via email



EVENTS



GREEN WEEK

7 - 13 March



Get involved in Green Week: 7-13 March

See the [events that are taking place on campus and online](#) as part of Green Week 2022. Increase your knowledge of climate change and sustainability issues and learn how to take action.

Getting that first long-term academic position

14:00 Tuesday 8 March

A talk and Q&A session with

Professor Robin Goodwin

While doctoral students are regularly instructed about the process of preparing a strong CV, writing an excellent thesis and publishing in good journals the application and interview process for that first, long-term (or even permanent) teaching + research post is often daunting. In his experience as Head of Department for ~8 years at two different Universities, Robin has interviewed candidates applying to many different Departments. In this talk he will discuss the range of academic opportunities open to potential PhD students - many of which are not in Psychology departments - and consider some tips for the application letter, preparing an interview presentation, the interview, and how to negotiate with

If you would like to attend this event, then please submit the form [here](#)



Assembly of the University

Details of agenda and how to sign up [here](#)

8 March 11:00 - 12:00

PGR Research Day: 20 May 2022

Here from psychology postgraduates about their research.

PhD Student Publication Award 2021 awards presented.

This event is an opportunity for psychology postgraduates to present their research (as a talk or a poster) to an audience of fellow students and academic staff within the Department of Psychology. The event is also open to [Clinical Psychology Doctorate \(DClin\)](#) students.

If you would like to present a talk or a poster at the PGR Research Day, please fill in [this form](#). Submissions will be open until **20th April, 2022**.

Venue: Gather Town

Arij Yehya, Duaa Ashoor, Sara Morales Izquierdo and Zhihong Huang



Warwick R User Group

9 March 17:00 - 18:00

Dr Aditi Shenvi | Research Fellow at the Applied Statistics and Risk Unit

Department of Statistics

Talk 1 by Adnan Fiaz and Ben Dickel, Senior Data Scientists at National Grid

Title: Long term gas supply & demand scenarios at National Grid

Talk 2 by Dr Manuele Leonelli, Assistant Professor at School of Human Sciences and Technology, IE University

Everyone is very welcome to join the meeting. If you're interested in speaking at a future WRUG meeting or would just like to find out more about the group, please do get in touch.

Workshop: Cognitive science: implications for teaching and learning

10 March 10:00 - 11:00

Dr John Kirkman

[Book your place here.](#)

The study of mental processes in the cognitive sciences offers insights which can be applied to teaching and learning. In this session we will explore a small number of scientific findings on the topics of attention, memory, perception and cognition. The findings can sometimes defy our expectations and intuitions. We will go onto discuss the implications of these findings in developing effective teaching approaches and efficient learning strategies. The session is suitable for those new to cognitive science and aims to offer a foothold into the field and give an insight into its potential for improving students' learning.

Research Impact: Making a Difference

14 March 10:00 - 12:00

The term "impact" is becoming increasingly prominent in research communities. But what do we actually mean by 'impact', and crucially, what does it mean for you, your research and your future career?

Subscribe

Past Issues

Translate ▼

agenda and its implications for researchers and institutions. You will receive advice and guidance on identifying and realising the impact potential of your own research; including the range of impact development and funding opportunities which could be available as you progress to the next stage of your career.

For further information and to book a free place, please visit the [MGS website](#)

Hosted by our Global Research Priorities for Behaviour, Brain and Society; Health; Productivity and the Futures of Work

Great Minds: An Exploration of the Brain

Monday 14 March 2022 - 9.30am - 1.30pm
Radcliffe Conference Centre, Room 2 - University of Warwick - Lunch provided

Great Minds: An Exploration of the Brain

Interested in the big questions surrounding the brain and mental health? Join a network of like-minded people interested in asking, and answering, the big questions around how we think, and how our thoughts impact our lives. [See details of an event on 14 March and register.](#)

Internal Seminars



A chance to hear about the research going on in the Department from our PhDs and research staff. Organiser: Suzanne Aussems

See Events

Term 3 Internal Seminars will move to 11:00 and we'll have 4 seminars to hear about the work of our new PhDs:

27 April - Erika Aparicio, Kayleigh Caffyn, Ellie Horton, Yuqi Ye

4 May - Yunziao Li, Pip Brown, Yuyao Cheng, Morgan Appleton

11 May - Mingtong Li, Lucas Castillo Marti, Rebecca Plimmer, Halleyson LI

18 May - Eugene Malthouse, Isabelle Barrett, Charlotte Gannon, Duaa Ashoor

Language and Learning group Seminars

Co-ordinator: [Marta Wesierska](#)

Bi-weekly programme on alternate weeks to Internal Seminar **12:00 Wednesdays**. Details published on Events calendar and TEAMS links circulated in advance of talks to Language and Learning Group members. If interested in joining the mailing list, contact [Marta](#) Wesierska.



See Events

Coming soon:

- | | |
|----------------------|-----------------------|
| 12:00 4 May | Aleksandra Kappenberg |
| 12:00 18 May | Alexandra Bosshard |
| 12: 00 1 June | Hiromichi Hagihara |
| 12:00 15 June | tba |

COMMUNITY SAFETY

Forgotten your keys/pass?

Subscribe

Past Issues

Translate ▼



Community Safety.

24-hour Control Centre (general enquiries)
internal extension x22083 or 024 7652 2083

Community Safety

If you're working late on campus make sure you look at the lone-working policy [here](#)

24 hour Control Centre (general enquiries) 22063 or 024765 22063

Emergency (fire, police, ambulance) 22222 or 024765 22222 (save to your MOBILE!)

All calls requiring an external emergency service on campus should be made through the Control Centre on the emergency number.

Postdocs and Postgraduates



Warwick Doctoral College @DC_Warwick · 4h

Public engagement masterclass — Find out how to take your presenting skills to the next level in [@warwickengages](#) live training workshop on 23 March! Learn and get feedback from award-winning communicator [@AnnaPloszajski](#).

Agenda and sign-up link: bit.ly/3psO8sW



Deadline fast approaching:

Subscribe

Past Issues

Translate ▾



Warwick Doctoral College @DC_Warwick · 4h

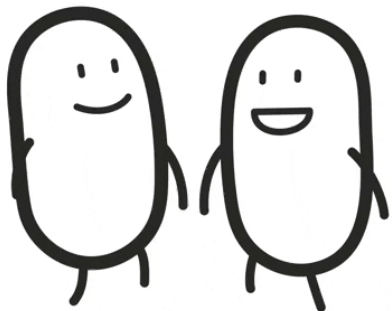
Can you present your thesis in just 3 minutes? One static slide, no props, and no materials – just you!

Join our Mini 3MT competition to practice for @warwickuni's official @3MT_official competition in June.

Find more info and submit your video here: bit.ly/3gwGOYv



Faculty PhD Thesis Prize 2022



Details of the scheme linked below (nominations open 31 January 2022 should be sent to PsychologyPG@warwick.ac.uk by 31 March).

Learn More



PGR Matters is our series of mini sessions giving you information (and time for questions!) on different aspects of PhD life.

Join us on Teams to find out more about teaching (next Tuesday) and supervision (14 March).

More info and sign-up: bit.ly/3t2H6MF @WarwickPgHub

PGR Matters

1 March, 2.15–2.45:
PGR Teachers - What is it like to be a tutor?

14 March, 1–1.30:
Supervision - How can I build a successful supervisory relationship?



Warwick Doctoral College @DC_Warwick · Feb 17

Apply to our Networking Fund by 26 April! The fund supports a range of PGR-led initiatives that bring people together. Learn more here: bit.ly/3JsjuHS

Keep a look out on Twitter as well: Over the next weeks, we'll introduce some of our currently funded networks here.

PGR Opportunity

Networking Fund

to support initiatives that bring people together, educate, stimulate, support, or challenge

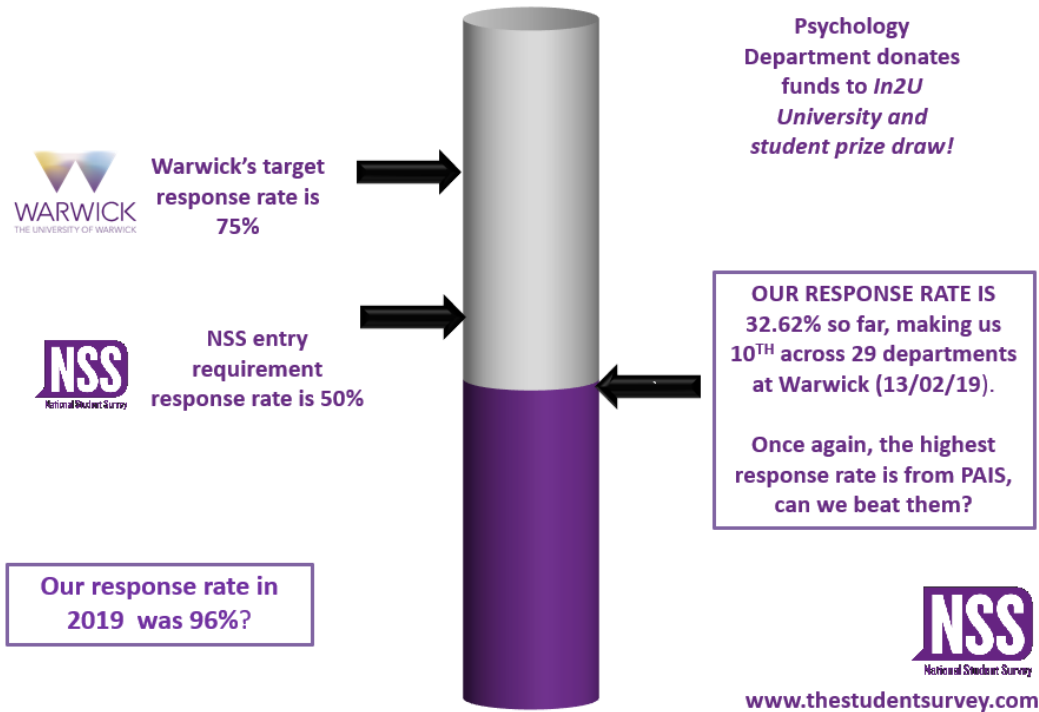
Apply by 26 April!

TEACHING



The [National Student Survey 2022](#) is still open. Find out more about how you can promote the survey to our final year undergraduate students and play your part in enhancing the student learning experience.

Psychology Department NSS Response Rate



Graduation 2022

[Subscribe](#)[Past Issues](#)[Translate ▼](#)

representing the first ceremonies on campus for more than two years. This will be a very special occasion as you celebrate your achievements with family, friends and the Warwick community.

This summer we will first be inviting students who graduated in absentia in Summer 2020, Winter 2021 and Summer 2021 back to campus for a belated and thoroughly deserved moment to recognise their achievements and we hope that these graduates will be able to join us as [Warwick Celebrates](#) their achievements. Eligible graduates have received an [email from the Academic Registrar](#) with further details today.

We will then be holding our traditional [Degree Congregations](#), for students due to graduate in July 2022. Students currently expected to be eligible to attend these ceremonies have received an [email from the Academic Registrar](#) with further details today.

Advance HE Insight Event:

Design Thinking: Approaches to Student Engagement

Held online, Design Thinking offers new tools for decision making, problem-solving, and ideation drawn from the business and digital realms. [Find out more.](#)

9 March 2022

Dr Bo Kelestyn from the University of Warwick introduces a [new podcast series ahead of the event.](#)

Call for Proposals: Sense of Belonging - A WP experience

From Amanda Bishop: 'Sense of Belonging: A WP Experience' is a joint event between the WP Staff and Student Networks. It is seeking contributions from staff and students at the University of Warwick around the theme of 'Sense of Belonging' for WP Students. This event is an opportunity to highlight the support, opportunities and challenges faced by staff and students who study and work at the university. The event organisers would welcome collaborative submissions from different perspectives including student involvement the sessions format is either a Workshop (45 mins) or Showcase presentation (20 minutes). The event will take place on 27 April 2022, more details to follow, but please save the date if you're interested in attending. To register an interest in delivering a session at this event please complete this [form](#). Closing date for applications is 12:00 on **4 March**.

News for and from your students

Siobhan Qadir, Careers Adviser

Warwick Uni Student Opportunity liked



University of Warwick

@warwickuni

Interested in a career in China, India or South-East Asia?

Join us for a series of bite-sized 15 minute country-specific, industry-focused employer presentations from 7 to 10 March. Find the events here and sign up through myAdvantage: warwick.ac.uk/services/caree...

Asia Careers Insight Series
7-10 March 2022

Virtual Presentations, Workshops
Panel Discussions

In collaboration with:

by: **MANCHESTER 1824** The University of Manchester

In partnership with:

- Aston University
- BATH
- UNIVERSITY OF BIRMINGHAM
- UNIVERSITY OF BRISTOL
- Cardiff University
- EXETER
- Lancaster University
- UNIVERSITY OF LEEDS
- UNIVERSITY OF LIVERPOOL
- Manchester Metropolitan University
- Newcastle University
- The University of Nottingham
- UNIVERSITY OF OXFORD
- The University of Sheffield
- Trinity College Dublin

RESEARCH AND IMPACT



[Subscribe](#)[Past Issues](#)[Translate](#) ▼

Inform Research Impact Services (RIS) if you are planning to submit a grant.

You can do so by contacting [Andrea Howard](#) directly. Alternatively, if it is for a grant that would bring more than £50k to Psychology, you can register your plans at the department site as these submissions are also sent to RIS.

[Register Grants here](#)

Research Champions sought for STEM Grand Challenge

We're looking for Research Champions to help develop the STEM Grand Challenge vision for research within five key themes. Take a look at [what's involved](#) and see how to express your interest.

The [RDF 2022-23 Strategic Awards](#) call has been launched.

Awards of up to £25,000 are available to support the development of future external funding bids in areas of pioneering, world-class research. Proposals that involve early career researchers, external partners, and/or inter-disciplinary approaches to global challenges will be particularly welcome. Applications to the RDF should have **HoD approval** and should be submitted via the application form (attached) to warwickrdf@warwick.ac.uk by **5pm on Friday 13 May 2022**.

Applicants are asked to read our full [Terms and Condition](#) regarding eligibility and eligible costs. Please contact Hattie Hine (H.Hine@warwick.ac.uk) or Colette Kelly (Colette.Kelly@warwick.ac.uk) if you have any queries.

Funding opportunity: Warwick National AI Strategy 2022 Fund

Apply for internal grants of up to £30k to [develop and initiate new activities in response to the National AI Strategy](#). Grants must be spent by 31 August 2022. Find out more.

Free Workshop on HPC/Parallel Computing in R

This workshop will introduce users of R to parallel computation in the context of high performance computing (HPC) clusters.

Participants will gain hands on experience with the Sulis tier 2 HPC service which specialises in high-throughput and ensemble computing.

The course is led by Michael Schubert, a computational biologist at Netherlands Cancer Institute (NKI), supported by David Quigley (SCRTP) and

[Subscribe](#)[Past Issues](#)[Translate ▼](#)

Date: March 14-15
Venue: Radcliffe Conference Centre
Cost: free, lunch included

You are encouraged to book by the end of February!

For more details: <https://warwick.ac.uk/research/rtp/sc/sulis/events/parallel/>

Dr Heather Turner (she/her)

JSPS Postdoctoral Fellowships (via The Royal Society)

Please visit this [web page](#) for further information.

Deadline: **9 March 2022**

The Royal Society - International Exchanges Scheme Round 4 open

<https://royalsociety.org/grants-schemes-awards/grants/international-exchanges/>

The International Exchanges Scheme offers flexible support for UK-based scientists to develop new collaborations with scientists based overseas via one-off visits or bilateral travel. The standard programme is available for travel to/from all countries outside the UK.

Deadline: **9 March 2022**

Newton International Fellowships Scheme 2022

The [British Academy](#) and the [Royal Society](#) are now inviting applications to the Newton International Fellowship scheme, funded by BEIS. The Newton International Fellowships aim to attract the most promising early-career post-doctoral researchers from overseas in the fields of the natural sciences, social sciences, and humanities from around the world.

Deadline: **16 March 2022**

Royal Society Wolfson Fellowships programme

The Royal Society Wolfson Fellowships Programme offers collaborations through one of two complementary routes:

- A five-year [Royal Society Wolfson Fellowship](#).
- A new [Visiting Fellowship](#) strand

Deadline: **15:00 23 March 2022**

Enquiries about the Royal Society Wolfson Fellowships programme can be sent to seniorfellowships@royalsociety.org

[Subscribe](#)[Past Issues](#)[Translate](#) ▼

Science Program (research grants)

Letters of intent: 31 Mar

The Human Frontier Science Program (HFSP) promotes international and interdisciplinary collaboration (UK and Japan both eligible) in basic research focused on the elucidation of the sophisticated and complex mechanisms of living organisms.

HR

Remember to [record coronavirus absence in SuccessFactors](#) if you are self-isolating or have tested positive and let the [office](#) know.

Reminder: Use your carried over annual leave by 31 March 2022

A quick reminder that carryover from the 2020/21 leave year should be used by the end of March or it will be lost. Check your leave balance in [Success Factors](#).



Planning to travel?

[International travel guidance for all staff and PGR students](#)

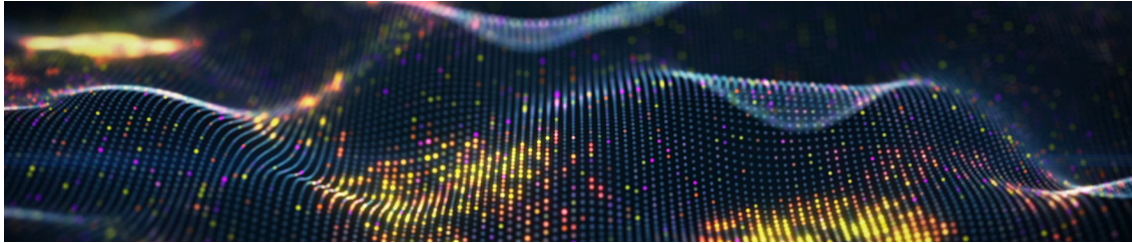
Travel Business Insurance

Reminder: Submit your internship vacancy

A reminder that you can still [apply to host a Warwick intern in your department](#) this summer, as part of the Warwick Internship Programme 2022. Hear from some of our previous interns about their [experiences](#) participating in the programme and make sure to submit your application by Monday 7 March.

Share your experiences of hybrid working

Learn more about our [hybrid working survey](#), and if you're able to undertake your role in a hybrid way please share your experiences.



International Women's Day 2022 (8 March 2022) events and activities.

- **Law:** [International Women's Day Gallery](#) - This gallery was started in 2021 and is intended to be added to each year, and you are invited to [submit your own nomination\(s\)](#) to be added to the gallery ahead of IWD2022.



- **Economics:** [Inspiring Women Gallery](#) – [Nominate inspiring women and girls](#) from around the world who are contributing to make our future more sustainable and [share your photo with the #BreakTheBias pose](#) and tell what means to break the bias for you.
- **Warwick Interdisciplinary Research Centre for International Development (WICID):** [Women in Solitary, Inside the South African Female Resistance to apartheid, by Shanthini Naidoo](#) (Monday 7 March 2022, 3-5pm, Wolfson Research Exchange, University of Warwick Library).
- **Chemistry:** [Picture a Scientist Screening](#) – This event is open to all! Please join us in viewing this ground-breaking film that is especially relevant to women in STEM. Join us on International Women's Day, Tuesday 8 March 2022, 16.30 pm, in Lecture Theatre L3 on the Science Concourse. Please register at <https://warwick.ac.uk/fac/sci/chemistry/chemevents/iwd2022>.
- **Inspiring Women:** [‘Sorry, Not Sorry...’ with Anna West from City CV](#) (Wednesday 9 March 2022, 12.30 - 1.30pm, Online Teams Event).

Please see more information about all of the above on the [International Women's Day webpage](#)

PICTURE A SCIENTIST, a film that chronicles the groundswell of researchers who are writing a new chapter for women scientists. Biologist Nancy Hopkins, chemist Raychelle Burks, and geologist Jane Willenbring lead viewers on a journey deep into their own experiences in the sciences, ranging from brutal harassment to years of subtle slights. Along the way, from cramped laboratories to spectacular field stations, we encounter scientific luminaries - including social scientists, neuroscientists, and psychologists - who provide new perspectives on how to make science itself more diverse, equitable, and open to all.

Join us on Tuesday 8 March, for an International Women's Day screening, in L3 at 16:30 (running time 97 mins). [REGISTER HERE](#)

Everyone in the SEM Faculty is welcome. More details at <https://warwick.ac.uk/fac/sci/chemistry/chemevents/iwd2022>

Stonewall Workplace Equality Index

Warwick was ranked 122 out of 403 workplaces in the 2022 Stonewall Workplace Equality Index, achieving Gold for high standards in specific categories. [Find out more about our 2022 results and Warwick's areas of future priority in order to further support our LGBTQUIA+ students and staff.](#)

Athena Swan - Diversity Interventions Conference

7 - 8 April 2022

Diversity Interventions 2022 will take place on 7-8 April in-person and online, an international conference hosted and co-convened by the University of Oxford, Advance HE, and Science in Australia Gender Equity (SAGE) Limited. [Book your place here.](#)

Athena Swan - Enhancing Practice: Shared Parental Leave and Breastfeeding Practices in UK Higher Education Institutions

22 March 2022 10:00 - 12:00

In this online workshop, researchers from York St John University will discuss the findings of their recent study into shared parental leave and breastfeeding practices in UK HE institutions. Book your place [here.](#)

Development Opportunities

What are Organisational Development offering in term 2? February bulletin with links to sign up [here.](#)

The greatest benefit of open access is that it enables the results of scholarly research to be disseminated more rapidly and widely. The image below shows range of the benefits of making your research findings [#openaccess](#) [#Research Thursday](#)



Wellbeing



It's University Mental Health Day – men from across our community share what mental health and wellbeing means to them, and how they look after themselves on a day-to-day basis.

[Subscribe](#)[Past Issues](#)[Translate](#) ▼

the chance to win a signed hardback copy of David Harewood's acclaimed memoir of race, identity and his recovery from a mental health crisis. [Watch David talking about his experience.](#)

Send your wellbeing tip to Denver.Thorpe@warwick.ac.uk by 17 March for your chance to win. A selection of tips will be published on the Staff Wellbeing Hub.



nightline

A non-judgmental, non-advisory, confidential, student-run listening service

Call: 02476 522199 or 02476 574322

IM: warwick.nightline.ac.uk/im

Drop in at our building on campus:
Free condoms, tampons, pregnancy tests, ear plugs etc

Mon-Fri: 9pm-9am

Sat-Sun IM only: 9pm-1am

Get 24/7 mental health and wellbeing support

Access [Togetherall](#), a safe place to talk, share and support others like you, available free to all staff and students. It's an anonymous community where you can express how you're feeling, get support and do courses at your own pace

Please reach out for support if you need it, either through your department or the [Employee Assistance Programme](#). You can also access self-help tools through the [Staff Wellbeing Hub](#) and [Wellbeing Support Services](#) (support for students).

Green Matters

Interested in finding more about Sustainability? Join the [Psychology GREEN TEAM](#)

ENVIRONMENTAL SUSTAINABILITY NEWSLETTER FOR FEBRUARY IS [HERE](#).

Including Sustainable Labs initiative, Introduction to Beekeeping, Student Sustainability Society Summit (18:00 3 March H0.52)

Subscribe

Past Issues

Translate ▼



Green Week22

If you'd like to run an event contact:
The [Psychology Green team](#) or
sustainability@warwick.ac.uk

Learn More

Explore [how we can all use cleaner, greener ways to get to, from and across campus](#), and discover [nine ways we are boosting energy efficiency on campus](#).

Coventry City of Culture update

Latest event's announced [here](#)

Resonate Festival: February events

This month's festival theme is 'Health', providing lots of opportunities to learn about healthy living, food and emotional wellbeing. [Discover what's on for you to get involved with.](#)



And finally...

[Subscribe](#)[Past Issues](#)[Translate](#) ▼

Lord Mayor of Coventry presenting the trophy to Best in Show. The show will be held at Finham Park School in Green Lane on 3 April, and all are welcome! Read more: orlo.uk/Qu3xE



Copyright (C) *|2022|* *|University of Warwick Psychology Department|*. All rights reserved.

Our mailing address is:
*|c.j.johnstone@warwick.ac.uk|**|*

This email was sent to c.j.johnstone@warwick.ac.uk
[why did I get this?](#) [unsubscribe from this list](#) [update subscription preferences](#)

[Subscribe](#)

[Past Issues](#)

[Translate](#) ▼

Grow your business with  **mailchimp**