

[View this email in your browser](#)



10 and 18 March 2022



In the vacation, events circulated via email. Next edition 28 April. Email any items you'd like to see in future bulletins to Catherine c.j.johnstone@warwick.ac.uk

Psychology Bulletin

News

Covid-19 guidance from 19 March

From 19 March there are new Covid arrangements for the rest of this academic year. Details of guidance [here](#).



PhD Fellowship in Psychology of Belief

PhD Fellowship mainly funded by The John Templeton Foundation will be available for students wishing to start a PhD in October 2022

Details [here](#).

Deadline: **31 March 2022**

This fellowship is specifically for a project supervised by [Dr Jesse Preston](#) and is supported by a grant from The John Templeton Foundation, awarded to Jesse Preston. Further details of this project can be found by following the academic staff link. Candidates should have a strong interest in research in psychology of belief with an experimental social-psychological approach. Example topics in this area include attitudes towards science, religious belief, conspiracy beliefs, and moral judgment. The fellowship holder will conduct research on science attitudes as outlined in the grant award and develop new research in collaboration with Dr. Preston as their supervisor.

[4 Psychology Departmental PhD Fellowships](#)

Closing date **this Sunday**: 20 March 2022



EVENTS



Euro Cafe and Polish Centre

Cake sale in Leamington on Saturday (19th) from 1-4pm (All Saint's Church CV31 1AA, just off the Parade). All proceeds are for people in Ukraine.



PGR Research Day: 20 May 2022

Here from psychology postgraduates about their research.

PhD Student Publication Award 2021 awards presented.

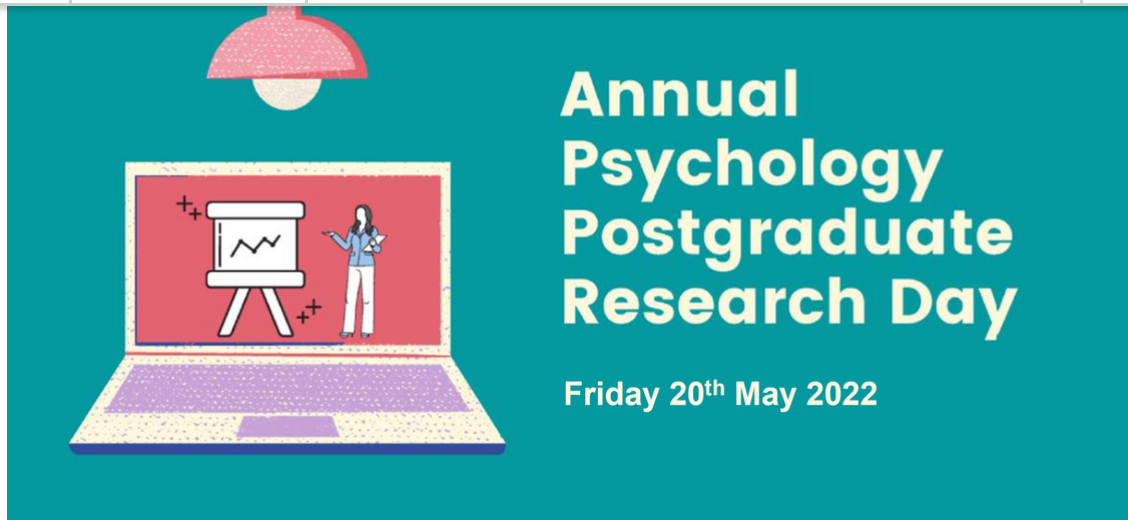
This event is an opportunity for psychology postgraduates to present their research (as a talk or a poster) to an audience of fellow students and academic staff within the Department of Psychology. The event is also open to [Clinical Psychology Doctorate \(DClin\)](#) students.

If you would like to present a talk or a poster at the PGR Research Day, please fill in [this form](#). Submissions will be open until **20th April, 2022**.

Venue: Gather Town

Organisers:

Arij Yehya, Duaa Ashoor, Sara Morales Izquiedo and Zhihong Huang



PhD student Publication Award 2021

Details [here](#).

Send eligible applications in the APA format to : psychologypg@warwick.ac.uk

Deadline: **Monday 4 April**

Winner to be announced at the [PGR Research Day](#).

To acknowledge research accomplishments by Warwick Psychology PhD students, a departmental **PhD student publication award** was established in 2017.

All eligible publications will be judged by the Departmental judging panel who will evaluate the papers based on their novelty, contribution to the field the quality of experimental or theoretical work, and potential impact. For more information about the award and previous winners, please see [here](#).



Flat-Icons.com

Warwick Spring

Days are getting longer, snowdrops and daffodils are already braving the cold – it's time for the new edition of our favourite social media competition, #WarwickSpring! Show us what your spring looks like this year in a photo or a short video.

[Subscribe](#)[Past Issues](#)[Translate](#) ▼

It's time for the brand new edition of our favourite social media competition, #WarwickSpring!

Show us what your spring looks like this year in a photo or a video, tag us and use the hashtag #WarwickSpring! Winners get £100 Love2Shop vouchers 🥰

warwick.ac.uk/warwick_presen...



Internal Seminars



A chance to hear about the research going on in the Department from our PhDs and research staff. Organiser: Suzanne Aussems

[See Events](#)

Term 3 Internal Seminars will move to 11:00 and we'll have 4 seminars to hear about the work of our new PhDs:

27 April - Erika Aparicio, Kayleigh Caffyn, Ellie Horton, Yuqi Ye

4 May - Yunziao Li, Pip Brown, Yuyao Cheng, Morgan Appleton

11 May - Mingtong Li, Lucas Castillo Marti, Rebecca Plimmer, Halleyson LI

18 May - Eugene Malthouse, Isabelle Barrett, Charlotte Gannon, Duaa Ashoor

[Subscribe](#)[Past Issues](#)[Translate](#) ▼

group Seminars

Co-ordinator: [Marta Wesierska](#)

Bi-weekly programme on alternate weeks to Internal Seminar **12:00 Wednesdays**. Details published on Events calendar and TEAMS links circulated in advance of talks to Language and Learning Group members. If interested in joining the mailing list, contact [Marta](#) Wesierska.

[See Events](#)

Coming soon:

12:00 4 May

Aleksandra
Kappenberg

12:00 18 May

Alexandra Bosshard

12: 00 1 June

Hiromichi Hagihara

12:00 15 June

tba

COMMUNITY SAFETY

**Forgotten your keys/pass?
No-one around? Call
Community Safety:**



**24-hour Control Centre
(general enquiries)
internal extension x22083 or
024 7652 2083**

[Community Safety](#)

Emergency (fire, police, ambulance) 22222 or 024765 22222 (save to your MOBILE!)

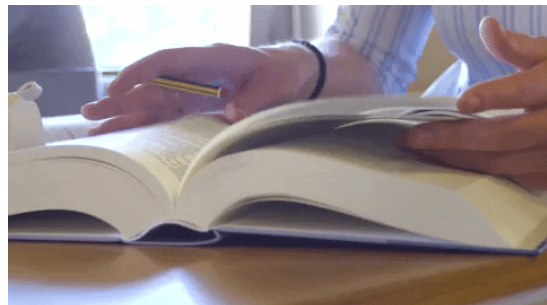
All calls requiring an external emergency service on campus should be made through the Control Centre on the emergency number.

Postdocs and Postgraduates

Welcome to Prisca Han who has joined as a PhD supervised by Dr Manos Konstantinidis!



The Faculty of Science, Engineering and Medicine Post-Doctoral Research Prizes 2022



The Faculty of Science, Engineering and Medicine is pleased to announce it will allocate a prize to each of its 10 Departments for the best Warwick-affiliated research output in 2021 from an early career researcher.

[Subscribe](#)[Past Issues](#)[Translate](#) ▼

Nominations to [Professor Adam Sanborn](#),
Director of Research by 31 March 2022



Warwick Doctoral College @DC_Warwick · 4h

Public engagement masterclass — Find out how to take your presenting skills to the next level in [@warwickengages](#) live training workshop on 23 March! Learn and get feedback from award-winning communicator [@AnnaPloszajski](#).
Agenda and sign-up link: bit.ly/3psO8sW



Warwick Uni Student Opportunity @SO_Warwick · 6h

Find out more about ECareers Grad – a new resource for University of Warwick students to develop their interview skills ow.ly/wVhm50IcMQh
[#WarwickCareersblog](#)



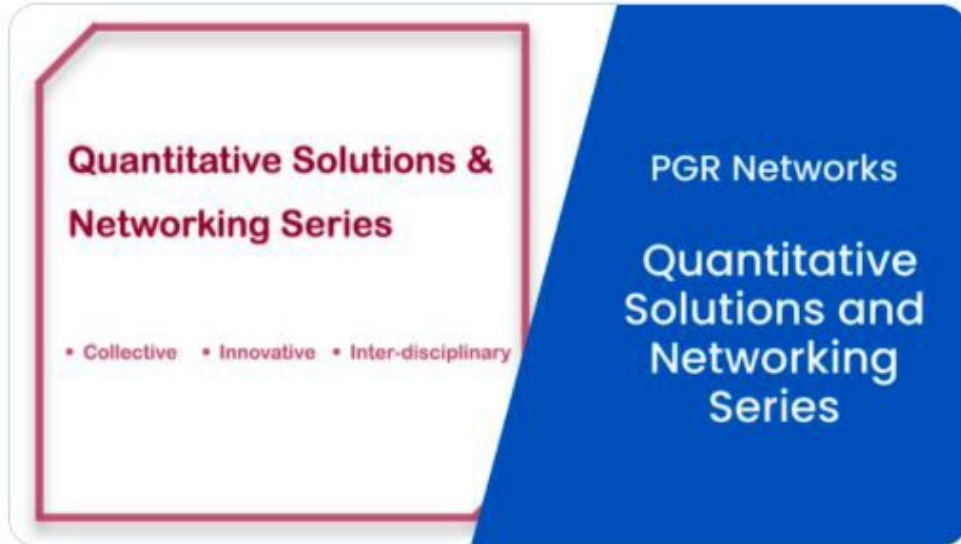
careersblog.warwick.ac.uk

How to succeed at interviews

Find out more about ECareers Grad – a new resource for University of Warwick students to develop their interview skills



PhD Networks — The Quantitative Solutions & Networking Series brings together PGRs to share their experiences of applying advanced quantitative methods in their research. Get involved and keep an eye out for their upcoming event on panel data analysis: bit.ly/3HKwtU5



Deadline fast approaching:

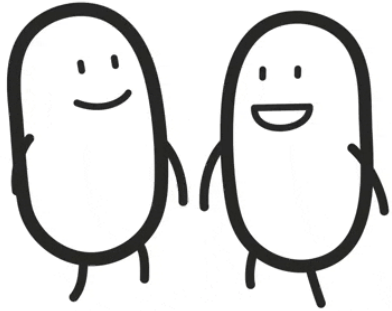


Warwick Doctoral College @DC_Warwick · 2h

PGR Opportunity — Until 13 March, applications are open for PG SPRINT - a personal development programme for female postgraduate students consisting of seven online sessions. Learn more here: bit.ly/3MBTsEu



Faculty PhD Thesis Prize

[Subscribe](#)[Past Issues](#)[Translate ▼](#)

Details of the scheme linked below (nominations open 31 January 2022 should be sent to PsychologyPG@warwick.ac.uk by 31 March).

[Learn More](#)

Warwick Doctoral College @DC_Warwick · Feb 17

Apply to our Networking Fund by 26 April! The fund supports a range of PGR-led initiatives that bring people together. Learn more here: bit.ly/3JsjuHS

Keep a look out on Twitter as well: Over the next weeks, we'll introduce some of our currently funded networks here.

PGR Opportunity

Networking Fund

to support initiatives that bring people together, educate, stimulate, support, or challenge

Apply by 26 April!



[Subscribe](#)[Past Issues](#)[Translate](#) ▼

Course Code	Course Name	Dates	Time	Information	Aimed at	Booking via SkillsForge
CH954	Science Communication	4 Apr to 6 Apr 17 May to 19 May 22 June to 24 June	10.00 to 17.00hrs	<p>This module aims to help you to communicate your research findings accurately and concisely to different audiences. The focus is on how to communicate in print, radio and TV to non-scientific audiences, but the skills will translate across to your research reports and presentations. It is based on a 3-days in person.</p> <p>It is hoped on the second day there will be a visit to BBC Warwick and Coventry radio studios. If the visit takes place, the Second day will finish around 8pm.</p> <p>The workshop will take place in the MOAC Seminar Room, Senate House, Top Floor. Lunch will be provided</p>	2 nd Year Students	CH954
CH953	Team Working in a Research Environment	Mon 28, Wed 30 March, Fri 1 st Apr, Wed 6 Apr & Fri 8 th April Mon 25, Wed 27, Fri 29 Apr, Wed 4th May & Fri 6th May, Mon 6, Wed 8, Fri 10, Tue, 14 th June & Thurs 16 th June	10:00 to 12:00 hrs 10:00-17.00 hrs 10:00 to 12:00 hrs 10.00 - 17.00 hrs 10:00-12:00: hrs 10:00-17.00hrs 10:00 to 12:00 hrs 10:00-17.00Hrs	<p>This 1st year module is designed to help you develop and enhance your team working and networking skills in a scientific research environment. It is based on a 6-day course where the emphasis is on the role of teams within the research environment in order to create quality outputs.</p> <p>The ways that different personality types interact together will be explored and experienced in practice by solving novel problems in groups.</p> <p>After the course you should further develop your skills by applying what you have learned in team situations. This course is designed to help participants:</p> <ul style="list-style-type: none"> ▪ get to know each other well enough to begin the 	1st Year Students	CH953

Subscribe	Past Issues				Translate ▼	
		<p>24, Tue 28 Jun & Thurs 30 Jun.</p>		<ul style="list-style-type: none"> ▪ gain the confidence and skills to work in research teams that cross the boundaries of scientific disciplines ▪ gain sufficient self-knowledge that they can reflect on their personal impact on others and how this influences the dynamics of their work group ▪ feel confident about their ability to build valuable and positive relationships with their supervisors and colleagues <p>This workshop will be a mixture of on-line and face to face sessions. The one-day face to face session will be in the MOAC Seminar Room, Senate House, Top Floor. Lunch will be provided on the last day of each course.</p>		

If you would like any further information, please do not hesitate in contacting us. Further information about the PG Cert in Transferable Skills in Science (PGCTSS) Programme please see our [website](#). Do not forget the Doctoral Skills Modules 1, 2 and 3 are all available in SkillsForge under the Doctoral Skills Tab. We look forward to meeting you in the near future.

Best wishes

Louise

Louise Hockenhill (She/her)

Postgraduate Certificate in Transferable Skills in Science Administrator | [Faculty of Science, Engineering and Medicine | transferable.skills@warwick.ac.uk](#) | External: 02476 575796 | Internal: 75796 | M3.09, Senate House | Central Campus | [University of Warwick](#) | CV4 7AL | [Find us on the interactive map](#)

TEACHING



NATIONAL STUDENT SURVEY 2022
NOW OPEN

NSS
National Student Survey

LET'S KEEP THE DIALOGUE GOING

LOVE2SHOP
voucher draw
2 x £500 | 50 x £20

warwick.ac.uk/nss





Need books for your teaching?

Contact [Samantha Johnson](#), Subject Librarian by the end of April with your requirements.

The [National Student Survey 2022 is still open](#). Find out more about how you can promote the survey to our final year undergraduate students and play your part in enhancing the student learning experience.

Bookable Moodle Support Sessions

The Digital Learning Environment (DLE) team is now offering a series of bookable one-to-one **Moodle Support Sessions**. These are intended to be short appointments to discuss users' needs and requirements so that we can advise on appropriate tools in Moodle for the activity they want to create. These sessions are not for reporting errors or issues which should still be submitted via the Help Desk. Appointments are available in the first instance between 11am and 1pm on Tuesdays, 1pm and 3pm on Thursdays and 10am and 12pm on Fridays. [Sign up to appointments with DLE staff via MS Bookings](#)

CALLS FOR INVOLVEMENT:

Subject: Online Teaching and Learning survey

We are conducting research to find out how online teaching and learning has impacted on the mental health of students during the Corona virus pandemic.

[Subscribe](#)[Past Issues](#)[Translate](#) ▼<https://salford.onlinesurveys.ac.uk/computers-anxiety-and-covid>

Dr Peter Eachus, School of Health and Society, University of Salford

WITHIN Study @StudyWithin · Mar 10

This week our study has been featured in the News & Events section of the "What's on in Coventry" Website! 📰📱

We are still looking for people with chronic pain to take part in our lab-based study. For more info, please see below.



whatsonincoventry.com
 Warwick Study of Mental Defeat in Chronic Pain - ...
 Funded by the Medical Research Council (MRC), the WITHIN Study will run from Nov 2019-2022. We ar...

Subject: Fw: Maskulinites Project - Job Advert

My name is Marco Venturi and I am a Student Liaison Officer with Report and Support.

My team is currently collaborating with the Community Values Education Programme team and the Student Union on a project that explores the role of men and male-identifying students in addressing gender-based violence, sexism, and homophobia. The aim is to create an educational resource to support preventative work and bystander action within club and society settings.

We are looking for a Project Officer to help us design and deliver the project. Here is the link to the job opportunity: [Unitemps - Project Officer](#). The deadline for applications is Sunday, 27 March 2022.

Dr Marco Venturi**Student Liaison Officer | Report & Support**

Dear psychology researcher,

Our team at the University of Bristol is studying **how psychology researchers conceptualise their studies, analyse their data, and advance knowledge with their research**. **If you are an experienced psychology researcher who is actively conducting research, we would love to have a short (30-60min) interview with you.**

Our aim is to better understand psychological research practices by learning from those who are at a career stage where they are established and can explore their own ideas. Consequently, we are looking to interview Lecturers (or equivalent) or above, on research or research-and-teaching pathways.

We plan to analyse the interviews as part of a qualitative study. **If you are able to participate within the next several months or would like to hear more about what the interview would entail, please reply privately to Robbie Clark (robbie.clark.2018@bristol.ac.uk).**

[Subscribe](#)[Past Issues](#)[Translate ▼](#)

This research study is being conducted as part of a PhD. It has been approved by the School of Psychological Science Research Ethics Committee at the University of Bristol (REF: 140521117331).

Your participation is, of course, completely voluntary. Thank you for considering this request.

Robbie Clark
PhD Researcher
School of Psychological Science
University of Bristol

12a Priory Road

[@RobbieC_Bristol](#)



Graduation 2022

We are delighted to be planning to hold in-person graduation ceremonies again in July 2022, representing the first ceremonies on campus for more than two years. This will be a very special occasion as you celebrate your achievements with family, friends and the Warwick community.

This summer we will first be inviting students who graduated in absentia in Summer 2020, Winter 2021 and Summer 2021 back to campus for a belated and thoroughly deserved moment to recognise their achievements and we hope that these graduates will be able to join us as [Warwick Celebrates](#) their achievements. Eligible graduates have received an [email from the Academic Registrar](#) with further details today.

We will then be holding our traditional [Degree Congregations](#), for students due to graduate in July 2022. Students currently expected to be eligible to attend these ceremonies have received an [email from the Academic Registrar](#) with further details today.

Welcome event submissions & conference booking now open

Submit your event to the [Welcome Week 2022 events calendar](#) by Monday 25 April to let new students know about events you've got planned. You can also [book your place on the Welcome Conference](#) on Thursday 24 March where you can explore best practice across the institution, from Warwick Presents to personal tutoring

News for and from your students

Careers Advice for students:

[Siobhan Qadir](#), Careers Adviser



Warwick Uni Student Opportunity @SO_Warwick · Mar 8

Apply for up to £500 to undertake a short international study, volunteering, unpaid work or research opportunity. Find out more ow.ly/NnC850lcOM7

Short Term Mobility Bursary

Apply for up to £500 towards a short international study, work or volunteering experience.

Applications will open 8 March – 4 May 2022

For more info go to: warwick.ac.uk/shortmobility

Apply to 100+ WIP summer internships from Sat 12/03 to Sun 27/03. Find out more on the Student Opportunity website ow.ly/Zwez50lgVG4.

Sat 12/03 to Sun 27/03 Apply to 100+ WIP summer internships

* WIP is only open to current Warwick undergraduate or integrated undergraduate master's students



Interested but not registered for WIP?

- check out warwick.ac.uk/wip & follow steps in 'Interested?'
- follow email instructions to enrol on WIP: Your Career in Progress e-platform to access vacancies, support and programme info

Already enrolled on WIPprogress e-platform?

- go to **Vacancies & Application** for How to Apply & view vacancies
- attend work experience drop-ins if any queries (refer sidebar)

P/S WIP Application and Interview workshops are open for booking! (search with **WIP 2022** using event tab of myAdvantage.warwick.ac.uk)



Warwick Uni Student Opportunity @SO_Warwick · 1h

It's never too early to start thinking about what you might do after graduation, and what skills you need to do it. Our new Warwick Award will help you do just that and we're looking for students to help pilot it next term.

Find out more: ow.ly/1Blo50IkVqq



RESEARCH AND IMPACT

[Subscribe](#)[Past Issues](#)[Translate](#) ▼

Don't forget



Inform Research Impact Services (RIS) if you are planning to submit a grant.

You can do so by contacting [Andrea Howard](#) directly. Alternatively, if it is for a grant that would bring more than £50k to Psychology, you can register your plans at the department site as these submissions are also sent to RIS.

[Register Grants here](#)

Research in Psychology: Learn more about research into understanding [why the gender gap in personality traits is widening](#) in more developed areas.

Research Champions sought for STEM Grand Challenge

We're looking for Research Champions to help develop the STEM Grand Challenge vision for research within five key themes. Take a look at [what's involved](#) and see how to express your interest.

The [RDF 2022-23 Strategic Awards](#) call has been launched.

Awards of up to £25,000 are available to support the development of future external funding bids in areas of pioneering, world-class research. Proposals that involve early career researchers, external partners, and/or inter-disciplinary approaches to global challenges will be particularly welcome. Applications to the RDF should have **HoD approval** and should be submitted via the application form (attached) to warwickrdf@warwick.ac.uk by **5pm on Friday 13 May 2022**.

Applicants are asked to read our full [Terms and Condition](#) regarding eligibility and eligible costs. Please contact Hattie Hine (H.Hine@warwick.ac.uk) or Colette Kelly (Colette.Kelly@warwick.ac.uk) if you have any queries.

Funding opportunity: Warwick National AI Strategy 2022 Fund

Apply for internal grants of up to £30k to [develop and initiate new activities in response to the National AI Strategy](#). Grants must be spent by 31 August 2022. Find out more.

[Subscribe](#)[Past Issues](#)[Translate](#) ▼

Royal Society Wolfson Fellowships programme

Deadline: **15:00 23 March 2022**

The Royal Society Wolfson Fellowships Programme offers collaborations through one of two complementary routes:

- A five-year [Royal Society Wolfson Fellowship](#).
- A new [Visiting Fellowship](#) strand

Enquiries about the Royal Society Wolfson Fellowships programme can be sent to seniorfellowships@royalsociety.org

Human Frontier Science Program (research grants)

Letters of intent: 31 Mar

<https://www.hfsp.org/funding/hfsp-funding/research-grants>

The Human Frontier Science Program (HFSP) promotes international and interdisciplinary collaboration (UK and Japan both eligible) in basic research focused on the elucidation of the sophisticated and complex mechanisms of living organisms.

HR

Remember to [record coronavirus absence in SuccessFactors](#) if you are self-isolating or have tested positive and let the [office](#) know.

Reminder: Use your carried over annual leave by 31 March 2022

A quick reminder that carryover from the 2020/21 leave year should be used by the end of March or it will be lost. Check your leave balance in Success Factors.



Subscribe

Past Issues

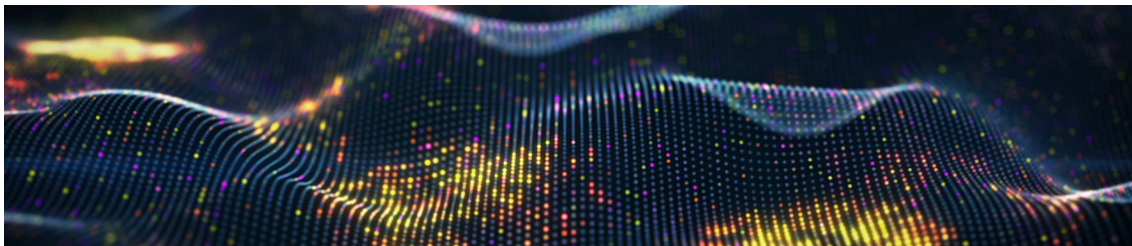
Translate ▼



[International travel guidance for all staff and PGR students](#)

Travel Business Insurance

ED&I news



Advance HE @AdvanceHE · 2h

#IamAurora We're celebrating the ongoing impact of Aurora, our development programme designed to empower women to seek leadership roles in **#HigherEd** and achieve **#Leadership** success. Read more here: ow.ly/FARg50Ia0KX **#BreakTheBias**

AURORA
FUTURE • CHANGE • GROWTH
WOMEN ONLY PROGRAMME

[Subscribe](#)[Past Issues](#)[Translate](#) ▼

of blogs sharing ways in which the [#HigherEd](#) sector is promoting [#GenderEquality](#) to help [#BreakTheBias](#). Read all the blogs here: ow.ly/OwJW50lcy2C



[Tackling Racial Inequalities in Assessment in Higher Education](#)

12:00 Wednesday 30 March

Sign up [here](#)

We are very pleased to welcome [Dr Paul Campbell](#) [Link opens in a new window](#), Director of the University of Leicester Institute for Inclusivity, to lead this special lunchtime seminar in March. Dr Campbell will discuss the findings from a multi-disciplinary research project that he led investigating students' from minority ethnic background's experiences of assessment. The project explored experiences regarding different types of assessment, as well as pre- and post-assessment support. Dr Campbell will present the key findings and recommendations made in the report, and the international pilot that is now implementing interventions across six universities in three different countries. There will also be open time for questions and discussion. The full report can be

[Subscribe](#)[Past Issues](#)[Translate ▼](#)

Stonewall Workplace Equality Index

Warwick was ranked 122 out of 403 workplaces in the 2022 Stonewall Workplace Equality Index, achieving Gold for high standards in specific categories. [Find out more about our 2022 results and Warwick's areas of future priority in order to further support our LGBTQUIA+ students and staff.](#)

Athena Swan - Diversity Interventions Conference

7 - 8 April 2022

Diversity Interventions 2022 will take place on 7-8 April in-person and online, an international conference hosted and co-convened by the University of Oxford, Advance HE, and Science in Australia Gender Equity (SAGE) Limited. [Book your place here.](#)

Athena Swan - Enhancing Practice: Shared Parental Leave and Breastfeeding Practices in UK Higher Education Institutions

22 March 2022 10:00 - 12:00

In this online workshop, researchers from York St John University will discuss the findings of their recent study into shared parental leave and breastfeeding practices in UK HE institutions. Book your place [here.](#)

Development Opportunities

What are Organisational Development offering in term 2? February bulletin with links to sign up [here.](#)

Subscribe

Past Issues

Translate

LEADERSHIP AND MANAGEMENT DEVELOPMENT

March 2022



HYBRID WORKING

Explore [support resources](#) available to help staff and managers prepare for hybrid working, where this is possible for your role. Helpful guides, recorded webinars, checklists and drop-in centres exist for managers to help them consider the changes they may need to make. For staff, a number of resources are available to help you get the most from hybrid working.

NEW AND FEATURED

Read about the new *Raising Mental Health Awareness* workshop and new resources on interview skills. More details on page 2.



DEVELOPMENT OPPORTUNITIES

Read about opportunities for Mediation training, a Public Engagement masterclass, an upcoming WIHEA seminar, and the chance to participate in telling your workplace wellbeing story. More details on pages 3 and 4.



VIRTUAL WORKSHOP AVAILABILITY

Overview of virtual workshop availability for Researchers. More details on page 4.





New & Featured

Raising Mental Health Awareness Interview skills resources

Raising Mental Health Awareness

In line with the University of Warwick Wellbeing Strategy, this bespoke training session helps to embed the importance of wellbeing and mental health university wide.

Mental health affects everyone. This 2.5-hour session will increase awareness and understanding of mental health issues and help to build confidence and competence in responding to mental health difficulties.

The session is aimed at all staff at the University of Warwick, and has been designed by University of Warwick staff who are experienced practitioners in mental health-related issues.

Session Objectives

You will learn about factors which lead to the development of mental health difficulties and how to respond appropriately to signs of distress.

By the end of the session, you will have:

- Greater awareness and understanding of mental health issues
- Increased confidence in recognising mental health needs
- Increased competence in knowing what to do when you identify mental health issues

For more information and to book a place on a workshop or join the mailing list for future sessions, visit the [Raising Mental Health Awareness webpage](#).

Interview skills resources

[A new resource around interview skills](#) has been produced by Student Opportunity, which staff are welcome to access.

There are a series of interview advice playlists, videos illustrating the different types of interview questions with modelled 'good' and 'bad' interview responses and commentary, and tips for interview preparation.



Development Opportunities

Warwick Mediation training course - online

Week commencing 21st March 2022: Mon, Tues, Thurs and Fri

This online course is running in week commencing 21 March 2022 over four days (not Wednesday) and leads to accreditation as a mediator. Places are very limited and given on a first come, first served basis.

The course:

The intensive nationally and internationally accredited mediation training course is delivered by a leading mediation provider, Emma McAndry of [Essential Mediation Solutions](#), via Teams over four days (a mix of self-study and online live sessions) and leads to accreditation as a mediator with options to obtain Civil Mediation Council/International Mediation Institute accreditation. The usual cost of the course is £1500 but places are being offered to Warwick staff and students and guests at £500 (plus £50 for CMC/IMI accreditation assessment if required).

Feedback:

“The course had a clear, easy-to follow structure, the material provided was of very high quality and the delivery was excellent. It was in equal measure enjoyable and challenging, which is not an easy feat. The integration of conceptual background and practical application was seamless. Emma’s knowledge, experience and enthusiasm for the subject was invaluable. I was definitely pushed out of my comfort zone, but in a way that helped me to develop skills that I did not have previously. I feel I learned more in the last 4 days than I have in the last 12 months! And I have not only learned much about mediation but also how to deliver a successful online course. Thank you Emma, this week was the highlight of my academic year!”

Academic staff member, University of Warwick.

Information and bookings:

Email [Emma McAndry](#) with your [completed booking form](#) to secure a place or email Emma or [Dr Jane Bryan](#) for more information.

[Subscribe](#)[Past Issues](#)[Translate](#) ▼

Public Engagement Masterclass: Taking your presenting skills to the next level

Wednesday 23 March, 10am-12:30pm / 1:30pm-4pm, Faculty of Arts Building

If you're a keen public engager who'd like to know how to make your presentations more impactful then this is the session for you. We've invited Anna Ploszajski, an award winning communicator, to join us for this multidisciplinary engagement masterclass on taking your presentations to the next level.

Upcoming WIHEA seminar

Thursday 7 April 2022, 2-3.30pm (via Microsoft Teams)

Register for this [interactive and discursive WIHEA online seminar](#) exploring the wider implications of the pandemic on the future of HE, as we reflect on what can be learned from the past years to develop more hopeful and equitable post-pandemic approaches to digital technologies and education.

Got a story to tell about workplace wellbeing?

Join us to **unlock, express and creatively exchange experiences in words that illuminate everyday work practices.**

[Illuminations](#) is a WIHEA funded project, building on the work of the [Wellbeing Pedagogies Learning Circle](#) and engagement with the [Warwick Wellbeing Strategy](#). Our primary interest at this stage is to explore different ways of talking and thinking about workplace wellbeing with different stakeholder groups across the University. The aim is to help locating and illuminating ways in which institutional work practices, processes, and procedures, in a post Covid-19 landscape, enhance and/or inhibit the wellbeing of student-facing staff (including non-academic staff and PGRs) at Warwick.

Have you got something to say about workplace wellbeing? Got 10mins to spare? Help us find the words to tell your story using our [anonymous submission form](#).

Virtual workshop availability for Researchers

Research Career 5 Series: How to Manage your Career	10 March
Research Staff Forum	14 March
Academic Writing: Writing for Publication	6 April

4

Wellbeing

Breath of fresh air

Please join us at
Moat House Park

Tuesdays 1pm - 3pm
starting on 8th March

Free Woodland wellbeing sessions for adults of all ages living in Wood End, Henley Green and Bell Green.



Supported by
#GreenFutures



It's University Mental Health Day – men from across our community share what mental health and wellbeing means to them, and how they look after themselves on a day-to-day basis.

What's your favourite wellbeing tip?

As part of University Mental Health Day, share your favourite wellbeing tip for the chance to win a signed hardback copy of David Harewood's acclaimed memoir of race, identity and his recovery from a mental health crisis. Watch David talking about his experience.

Send your wellbeing tip to Denver.Thorpe@warwick.ac.uk by 17 March for your chance to win. A selection of tips will be published on the Staff Wellbeing Hub.

A non-judgmental, non-advisory, confidential, student-run listening service

Call: 02476 522199 or 02476 574322

IM: warwick.nightline.ac.uk/im

Drop in at our building on campus:
Free condoms, tampons, pregnancy tests, ear plugs etc

Mon-Fri: 9pm-9am

Sat-Sun IM only: 9pm-1am

Get 24/7 mental health and wellbeing support

...ing, get support and do courses at your own pace

Please reach out for support if you need it, either through your department or the [Employee Assistance Programme](#). You can also access self-help tools through the [Staff Wellbeing Hub](#) and [Wellbeing Support Services](#) (support for students).

Free 'Friday pass' at the Sports and Wellness Hub

Discover the 'Free Friday' pass, only available to Warwick staff. Between 18 March to 29 April, staff will have free access every Friday between 6am-11pm to the state-of-the-art gym, swimming pool, fitness classes and a climbing induction at the Sports and Wellness Hub.

Green Matters



BEE-LINES

MON 28 FEB 2022 TO TUE 31 MAY 2022

VARIOUS LOCATIONS THROUGHOUT COVENTRY

FREE

The Bee-lines project will create new pollinator pathways & wildflower meadows – planted citywide from cultural destinations to community container gardens. It will reconnect our greenspaces and make new pathways for people and pollinators across the city.

Coventry City of Culture Trust, Warwickshire Wildlife Trust, Coventry City Council, The Canal and River Trust and the Historic Coventry Trust will be working with Coventry communities, cultural and educational organisations to deliver the project in multiple locations.

The aim is to activate green spaces in Coventry throughout Spring in time for the culmination of City of Culture and a city wide celebration in May Wildlife.

We are also encouraging the public to go wild with their planting and take pictures of their seeds and flowers in bloom in their gardens by tagging #greenfutures, @coventry2021, @heritagefunduk and @WKWT!

ENVIRONMENTAL SUSTAINABILITY NEWSLETTER FOR MARCH IS HERE.

Including THE LATEST Sustainability Blog, RAWKUs collection on 19 March and Spring Festival in the FarGo Village, Coventry 26/27 March.



New carpooling scheme: Liftango

Explore our new carpooling scheme that aims to provide a wider range of sustainable, climate positive travel options. See the benefits of commuting with colleagues and sign up.



Sustainability at Warwick @WarwickUniSust · Mar 14

@universityofwarwick has partnered up with sustainable transport company Liftango, to launch a Carpooling scheme! Download the Liftango app to find nearby rides/sign up as a driver. With carbon positive offsetting, join now for a new sustainable way to travel to and from campus!



Choose Your Way Warwick Challenge

Are you walking, running, or cycling to, from and around campus? Taking the bus or an e-scooter? Sign up to the Choose Your Way Warwick challenge to earn rewards for travelling sustainably. It's part of our work with Transport for West Midlands where we're trialling new approaches and technologies for campus travel to help address the climate emergency.

[Subscribe](#)[Past Issues](#)[Translate](#) ▼

Coventry City of Culture update

Resonate 2022 Festival Grand Finale: 19-21 April

As Coventry's time as UK City of culture nears its conclusion, be sure to come along to [Resonate Festival's grand finale](#), where we celebrate a full 12 months of roadshows from Warwick's Institute of Engagement. Taking place across campus, the three day extravaganza will feature over 50 free events, from performances, films, comedy, games, experiences and more!

Why not also take a closer look at some of our [Resonate projects](#), which illustrate the valuable partnerships we have formed with our local community during this time.

Psychology staff and students might be interested in...

- Sasha Bates' *Good Grief* show, exploring her work as a psychotherapist and her writing about grief
- Lemn Sissay's celebration of the redemptive power of creativity, as he talks about his biography *My Name is Why*, which is both funny and extremely poignant
- Pip Stewart's talk on her book *Life Lessons from the Amazon*, which explores the psychology of resilience, bringing life lessons back from her adventures along Guyana's Essequibo River
- Anna Hurley-Wallace's *The Workplace Wellbeing Tree*, an interactive exhibit about workplace wellbeing and productivity

#Coventry Women's Suffrage Walk tomorrow at 11am bit.ly/3qiPNBH
#ResonateFestival @Coventry2021



The poster features a central circular image of two women in early 20th-century attire. Text elements include 'PART OF the resonate festival' in a speech bubble, 'MAR 19' in a black box, 'Amazing Women' in red vertical text, and 'Mar 19, 2022 · Start - Coventry Transport Museum' in purple. The main title 'Coventry Women's Suffrage Walk' is in large black font.



March films at Warwick Arts Centre and opening of Benugo Bar

See all the [upcoming films](#) for this month in Warwick Arts Centre's cinemas, or check out one of the [5 highly acclaimed recommended films](#).

You can also stop by at the new [Benugo Bar & Kitchen](#), open daily from 9am.

Here are our latest comedy and music events. They're now all on sale, so now's the time to book the best seats in the house.

We have performances from comedians [Jess Fostekeu](#) with her show *Wench*, [Shaparak Korsandi](#) reminding us that *IT WAS the 90s!* and [Chris McCausland](#) with his new show *Speaky Blinder*.

And finally...

 Warwick Print liked
 **Warwick Postgrad Hub** @WarwickPgHub · 20h
Dramatic skies from @warwicklibrary this afternoon! 



Copyright (C) *|2022|* *|University of Warwick Psychology Department|*. All rights reserved.

Our mailing address is:
*|c.j.johnstone@warwick.ac.uk|**|*

[Subscribe](#)

[Past Issues](#)

[Translate](#) ▼

University of Warwick - Gibbet Hill Road - Coventry, West Midlands CV4 7AL - United Kingdom

Grow your business with  **mailchimp**