

[View this email in your browser](#)



5 May 2022



Email contents to Catherine Johnstone c.j.johnstone@warwick.ac.uk

Psychology Bulletin

Covid-19 guidance for remainder of academic year

The University has published an update on Covid arrangements for the remainder of the academic year - <https://warwick.ac.uk/coronavirus/current-staff>

Departmental information can be found on the intranet - <https://warwick.ac.uk/fac/sci/psych/staffintranet/covid/>.

Planning to travel (staff and PGRs)?

Read [HR checklist for travel](#) noting restrictions on the type of accommodation that can be booked and through who (**KEY TRAVEL ADVISED**). Note requirement for Fin Regs approval via Steve McGladrigan **IN ADVANCE** of booking any non-standard accommodation:

- If you are booking accommodation that is being made available or is approved by the Institution / University being visited as the purpose of the business trip additional FinRegs approval is not required.
- Accommodation should be booked either direct with hotels or by using a reputable accommodation supplier with flexible cancellation policies and clarity on the H&S standards imposed. The University does **NOT** recommend using AirBnB properties – approval from FinRegs and Health & Safety must be sought if AirBnB is being considered, and there are additional procedures and checklists that must be followed.

[Subscribe](#)[Past Issues](#)[Translate](#) ▼

2 Email [Catherine Johnstone](#) to get registered as a booker for Key Travel being mindful of the temporary financial regulations relating to Key Travel here: **[Read about the temporary financial regulations in place to ease problems with Key Travel booking implemented 20 April 2022.](#)**

3 Complete Risk Assessment before booking travel to comply with business insurance requirements - DOWNLOAD from this page:
https://warwick.ac.uk/services/healthsafetywellbeing/guidance/travel_health

Email to HoD.Psychology@warwick.ac.uk to get HoDs approval.

4 Email [Anita Burrows](#) to raise a purchase order once quote has been obtained from Key Travel (working days Mon/Tues/Thurs).

5 Email [Steve McGladrigan](#) with any queries about what expenditure can be reclaimed BEFORE making any bookings.



Travel Business Insurance

CONFERENCE BOOKING GUIDANCE - Fin Regs

- Conference bookings (fees) do not require FinRegs approval
- If accommodation is included as part of the conference package, FinRegs approval is not required
- If preferential rates are offered for conference attendees at the conference hotel or a nearby hotel, this can also be booked without FinRegs approval
- If the conference is outside of Europe, or in Europe and travel costs will be more than £500, flights should be booked through Key Travel, per the University policy

All other FP16 and Travel Policy requirements apply, including the requirement for any staff and PGR students intending to undertake overseas business-related travel to seek departmental budget approval, complete a risk assessment and ensure that appropriate travel insurance is in place.

Also, as a reminder, the University does NOT recommend using AirBnB properties for accommodation bookings – approval from FinRegs and Health & Safety must be sought if AirBnB is being considered, and there are additional procedures and checklists that must be followed.

News

PhD Fellowship in Psychology

The PhD fellow will be supervised by [Professor Dieter Wolke](#) in the Department of Psychology and co-

[Subscribe](#)[Past Issues](#)[Translate](#) ▼

study (BB2UP). The fellowship is available for a PhD to start latest in October 2022.

Details [here](#).

Deadline: **11 May 2022**

the Medical School ([Profs. S. Quenby](#), and J. Cardoso) consisting of statisticians, health economists and external expertise in registry analysis (Prof. E. Kajantie, THL Helsinki).



The call for the **EUTOPIA PhD Co-tutelle 2022 Programme** is now open

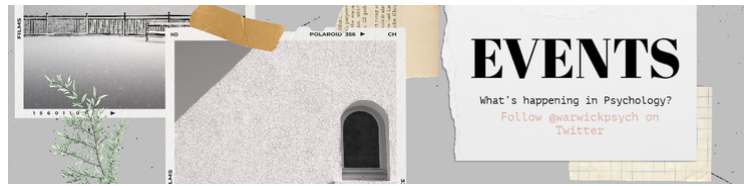
The EUTOPIA PhD Co-tutelle offers funding for PhD projects (3-4 years) co-supervised by academics from six of the ten [EUTOPIA](#) alliance member universities: CY Cergy Paris Université, Warwick University, Vrije Universiteit Brussel, Nova University Lisbon, Ca'Foscari University of Venice, Babes-Bolyai University.

Applications **must** be made by the **co-directors of the project** via an application platform by **6th May 2022, 12 am (CET)**

[Call Description and application](#)



EVENTS

**Workshop:**

Social Choice Under Risk and Uncertainty Dr Eric Danan of CY Cergy Paris

09:00 - 18:00

Monday 9 May 2022

Please contact [Eric Danan](#) if you wish to attend

This workshop will provide the opportunity to discuss policy decisions made in risky or uncertain environments. Participants will engage with the way that social choice theorists seek to guide such decisions by formulating desirable principles and identifying the decision rules that satisfy these principles. Presentations will cover recent advances in the theory of social choice under risk and uncertainty, focusing in particular on the issue of aggregating the preferences of agents with heterogeneous tastes or beliefs.

Internal Seminars



A chance to hear about the research going on in the Department from our PhDs and research staff. Organiser: Suzanne Aussems

[See Events](#)

Term 3 Internal Seminars will move to 11:00 and we'll have 4 seminars to hear about the work of our new PhDs:

Already presented: *Erika Aparicio, Kayleigh Caffyn, Ellie Horton, Yuqi Ye, Yunziao Li, Pip Brown, Yuyao Cheng, Morgan Appleton*

11:00 Weds 11 May

Mingtong Li, Lucas Castillo Marti, Rebecca Plimmer, Halleyson Li

Language and Learning group Seminars

Co-ordinator: [Marta Wesierska](#)

Bi-weekly programme on alternate weeks to Internal Seminar **12:00 Wednesdays**. Details published on Events calendar and TEAMS links circulated in advance of talks to Language and Learning Group members. If interested in joining the mailing list, contact [Marta](#) Wesierska.



[See Events](#)

12:00 Wednesday 18 May Alexandra Bosshard

Coming soon:

12: 00 1 June

Hiromichi Hagihara

12:00 15 June

tba

Warwick Turing Fellow Hosted Catch Up Series 2022:

May 9, May 26, June 13

Warwick Data are hosting a series of catchups to showcase the latest developments in data science and artificial intelligence, with talks from Turing Fellows and leading researchers at The Alan Turing Institute. The event is also designed to facilitate connections between Warwick Turing Fellows and the broader University community. For more information, please use this [link](#).

Pint of Science: 9-11 May.

Tickets are now on sale for the [Pint of Science Festival](#), taking place 9-11 May. Featuring talks from Warwick staff and students exploring all things science, the festival will be taking place across Coventry and Warwickshire.



PGR Research Day: 20 May 2022

If you would like to present a talk at the PGR Research Day, please fill in [this form](#).

Here from psychology postgraduates about their research.

PhD Student Publication Award 2021 awards presented.

This event is an opportunity for psychology postgraduates to present their research (as a talk or a poster) to an audience of fellow students and academic staff within the Department of Psychology. The event is also open to [Clinical Psychology Doctorate \(DClin\)](#) students.

Venue: Gather Town

Organisers: Arij Yehya, Duaa Ashoor, Sara Morales Izquierdo and Zhihong Huang



Annual Psychology Postgraduate Research Day
Friday 20th May 2022

The banner features a teal background with a red lamp icon at the top. Below it is an illustration of a laptop displaying a presentation slide with a line graph and a person standing next to it. The text 'Annual Psychology Postgraduate Research Day' is written in large white font, with the date 'Friday 20th May 2022' below it.

COMMUNITY SAFETY



Forgotten your keys/pass? No-one around? Call Community Safety:

24-hour Control Centre (general enquiries) internal extension x22083 or 024 7652 2083

Community Safety

If you're working late on campus make sure you look at the lone-working policy [here](#)

Emergency (fire, police, ambulance) 22222 or 024765 22222 (save to your MOBILE!)

All calls requiring an external emergency service on campus should be made through the Control Centre on the emergency number.



inVISIBLE Research & Diversity Conference

The Warwick Black Chemistry Society (WBCS) in collaboration with the Institute of Advanced Study (IAS) would like to ***invite you to attend and/or present at the inVISIBLE Research & Diversity Conference at the Zeeman Building***. The conference is part of an Equality, Diversity & Inclusion project (inVISIBLE) aimed at promoting the visibility of ethnic minorities in academia.

The conference will feature ***two days of research talks and posters by ethnic minority researchers (8th & 15th July)*** as well as ***one day of diversity-based talks (13th)*** to highlight projects targeted at addressing inequality gaps within academia. By reserving research talks for ethnic minority researchers, it is our aim to provide a dedicated platform for them to share their research contributions and feel celebrated in environments where they are often underrepresented.

On ***8th July***, we will be joined by two fantastic keynote speakers: ***Prof Robert Mokaya (University of Nottingham)*** and ***Prof Kalwant Bhopal (University of Birmingham)***. Prof Mokaya is currently UK's only black Chemistry professor and his contributions to the chemical sciences have seen him awarded a UK OBE. Prof Bhopal is an acclaimed author tackling racial gaps in Higher Education and her work was used to develop the Race Equality Charter mark.

Registration to attend and/or present is available **here** and is open till ***31/05/2022***.

We look forward to seeing you there and for any further questions, please visit: **go.warwick.ac.uk/invisible_conference** or contact **wbc@warwick.ac.uk**

Online London Doctoral Summer School 2

(20 June - 1 July 2022)

I am writing in regard to the 2nd Online London Doctoral Summer School entitled "The Doctoral Process and Beyond" for PhD & Professional doctoral students, early-career researchers and

[Subscribe](#)[Past Issues](#)[Translate](#) ▼

Professional through workshops and keynote speakers, complemented by student exercises and resources which are available virtually online. We have had Doctoral candidates in the Summer School from a variety of countries including Poland, Germany and Moldova.

This intensive two-week Summer School on the Doctoral Research Process will comprise the following research topics:

- research design,
- research methods and methodology,
- data analysis,
- digital research techniques,
- academic writing,
- literature review,
- grant applications,
- research dissemination and publication of research in academic journals and books.

Further details: <https://rosendale.org.uk/summerschool2022/>

Warwick Researcher Development liked

 **Warwick Doctoral College** @DC_Warwick · 5h

Networking Fund EXTENSION — Postgraduate researchers now have until 23 May to submit their applications to our networking fund to receive up to £300 to fund educational, supportive, and creative networking events.

Find out more and apply here: bit.ly/3xW6TKg



[Early Career Researcher Network Inaugural meeting](#)

[Subscribe](#)[Past Issues](#)[Translate](#) ▼

Learn more about the event and how it supports ECRs at vwarwick.



Warwick Doctoral College @DC_Warwick · Apr 26

...

There is still time to submit your entry into this years 3MT competition. Can you present your PhD thesis in just 3 Minutes? The winner will be entered into the regional final!

Don't forget – Entries must be submitted by 20 May.

Apply here: bit.ly/3JtyAML



Submit your nomination for the Postgrad Awards and recognise those who have excelled in the academic sphere, as well as those who have made a difference through volunteering, extra-curricular activities, or simply going the extra mile to support their peers and colleagues!

The deadline has been extended to **Sunday 8 May** – celebrate the contributions your departmental team and peers have made to the postgraduate community by submitting a free nomination, and share this opportunity > <https://bit.ly/3KfPILN>

Don't forget to remind PGT students that the PTES survey is still open

Share your views and help us shape and improve the postgraduate student experience. You could win a £500 Love2shop voucher 😊

warwick.onlinesurveys.ac.uk/warwickptes

@WarwickPgHub

POSTGRADUATE
TAUGHT EXPERIENCE
SURVEY

LET'S KEEP THE DIALOGUE GOING

WARWICK

Complete PTES by 16 May 2022.
Your views can make a difference.



Research Exchange @ResearchEx · 29m

No, not Elvis. Just the PhD viva. How rock 'n' roll. Hear about blogger Pierre's experiences and top tips here [#phdviva](#) [#phdblog](#) [#thesisviva](#)



phdlife.warwick.ac.uk

Viva Las Vegas! The safest gamble you'll ever take

It sits, a neon blaze on the distant horizon, alone in a desert of scorched neurones, the gamblers' paradise on which you stake the las...

TEACHING

[Subscribe](#)[Past Issues](#)[Translate](#) ▼

Bookable Moodle Support Sessions

The Digital Learning Environment (DLE) team is now offering a series of bookable one-to-one **Moodle Support Sessions**. These are intended to be short appointments to discuss users' needs and requirements so that we can advise on appropriate tools in Moodle for the activity they want to create. These sessions are not for reporting errors or issues which should still be submitted via the Help Desk. Appointments are available in the first instance between 11am and 1pm on Tuesdays, 1pm and 3pm on Thursdays and 10am and 12pm on Fridays. [Sign up to appointments with DLE staff via MS Bookings](#)

Working with Young People Training for Staff and Students

Amanda Bishop has shared an update about the following training: if you wish to or are already working with under 18s through outreach/WP events, supporting at Open Days, or going out into the community to talk about your research or events, there is some training available for staff and students to support you in this work. This training session will equip you with the basics of safeguarding, working with under 18s, keeping safe online, and effective communication. Anyone working with under 18s whether on or off campus has a duty of care to be effectively trained, therefore we strongly encourage you to join us to equip yourselves with the relevant understanding and skills. You can either [sign up](#) as an individual or submit on behalf of a group such as a society. The current training sessions are **Thursday 5 May 16:00-17:30** and **Wednesday 22 June 13:00-14:30**. Please note that all sessions will take place online via MS Teams.

ITLR Town Hall Events: May 2022

Following the recent publication of the draft ITLR blueprint, a series of Town Hall events are being held for the University Community. There will be two online (Teams) events on 5 May at 14:00-15:00 and 9 May, 9:30-10:30. The event on 10 May, 12:00-14:00 will be in person (location TBD) with the Town Hall commencing at 12:00 and a networking lunch at 13:00. To register, please follow this [link](#).

BPS West Midlands Branch update

Summer Research Assistantship Scheme: This scheme will provide a student stipend (£240 per week) to support a student working on a specific research project. The aim is to provide an academic with research support and a student with experience which will help them develop their research expertise. We are especially

Undergraduate Award: We are inviting all Universities in the West Midlands region to nominate a student for this prize for an outstanding final year project. Deadline: **17 June**

Conference and Event bursary: Any branch member can apply for up to £200 towards covering the costs of attending a virtual or physical event or CPD opportunity. Deadline **30 June**

These deadlines are tight, come and talk to us if you are interested but not able to get an application completed before the date. Please see out microsite for details of these opportunities and how to apply: <https://www.bps.org.uk/member-microsites/west-midlands-branch/awards-funding>

Careers events: Since I last wrote we have supported student career events with both Coventry and Staffordshire Universities. These have been very successful, getting strong attendance and significant follow up interest.

Most of our Universities have expressed an interest in hosting careers events, and we are considering different ways to support this level of demand. One would be for 'career micro-events', where we would have one or two speakers present and use some of the excellent recordings from previous events. An alternative might be that a number of Universities link together and we jointly organise with them a multi speaker half day/full day session.

Do let us know if these options (or any others) are of interest to you.

BPS Student Ambassador scheme: The BPS has been piloting their student ambassador scheme which will create a link between psychology students in each University, the BPS and the student committee. The West Midlands will be looking at joining the scheme in September and if we do we will be in contact with you again.

Lawrence Moulin, BPS West Midlands Branch



Warwick Celebrates

Class of 2020 and 2021

Warwick Celebrates

This summer, students who graduated *in absentia* in Summer 2020, Winter 2021 and Summer 2021 are invited back to campus for a belated and thoroughly deserved moment to recognise your achievement. We

[Subscribe](#)[Past Issues](#)[Translate ▼](#)

rewarding as it possibly can be. We hope that you will be able to join us as *Warwick Celebrates* your achievements alongside your fellow graduates.

The ceremonies will take place on campus between **5-15 July 2022 (including Saturday and Sunday)**.



Degree Congregation: July 2022

We are delighted to let you know that we are planning to hold in-person graduation ceremonies in July 2022, representing the first traditional Degree Congregations on campus for more than two years. This will be a very special occasion as you celebrate your achievements with family, friends and the Warwick community.

Ceremonies for students due to graduate in July 2022 will take place on campus between 18-27 July 2022 (not including Saturday and Sunday). These ceremonies will follow the normal graduation format and will take place in the Butterworth Hall, Warwick Arts Centre.

[Learn More](#)

Pre-sessional English Teams Briefing: Tuesday 10 May 14:00-15:00 (Teams)

From Pre-sessional English Team: *We're holding a Teams briefing this year for all staff interested in finding out more about the academic content, course structure, teaching and assessment on the Pre-sessional English programmes. This will be particularly valuable for any academic departments who would like to know more about what pre-sessional students learn and for staff who promote the pre-sessional internationally and would like more insight. Please sign up for the*

Placement Practitioner Toolkit feedback sessions

If you support students and employers with work placements, register now for a staff [feedback session](#), (12 May - 10 June) where you can hear about developments to the [Placement Practitioner toolkit](#) and provide your feedback to ensure it remains relevant and up-to-date.

External R teaching event: Teaching Statistics with R in Psychology: Online symposium, 23 June.

On 23 June, we will be hosting an online symposium about teaching statistics in psychology using R. There will be talks from representatives of Lancaster University, Nottingham Trent University, University of Glasgow, the University of Plymouth, and the University of Sussex. The symposium is free and open to all. See the following webpage for details, schedule, and the registration form.

<https://www.ntu.ac.uk/about-us/events/events/2022/6/teaching-statistics-with-r-in-psychology>

News for your students

Careers Advice for students:

Siobhan Qadir, Careers Adviser



Warwick Uni Student Opportunity @SO_Warwick · 32m

Our [#MySummerNetworking](#) campaign is a welcome return to campus activity and offers you a vital opportunity to connect with employers, build face to face networking skills and explore career options [#GetConnected](#) [#GetHired](#) ow.ly/jOnr50IScEt



4 July to 12 August 2022

The Internship Scheme offers 6-weeks research internships to four students who are studying at a UK or Republic of Ireland university for their undergraduate bachelor degree and are in their middle year(s) of study. Internships will be suitable for those studying psychology, cognitive sciences, neuroscience or a related discipline.

For more details about the scheme, eligibility, and how to apply see:

<https://www.mrc-cbu.cam.ac.uk/vacancies/summer-internship-scheme/>

Applications Open: Sunday 24th April

Applications Close: Sunday 8th May at midnight

Interviews for shortlisted candidates: Week of Monday 23rd May

Internship scheme: Monday 4th July – Friday 12th August

Widening Participation We are committed to widening participation in the Summer Internship Scheme at the MRC Cognition and Brain Sciences Unit, University of Cambridge. Accordingly, we warmly welcome applications from individuals from groups that are currently underrepresented in postgraduate study in the life sciences and/or who have experienced some form of educational disadvantage, and will take widening participation factors into account in our selection process. We will be using positive action under the Equality Act 2010 where appropriate.

Should you have any queries, please contact us at internship@mrc-cbu.cam.ac.uk





Don't forget

Inform **Research Impact Services (RIS)** if you are planning to submit a grant.



You can do so by contacting [Andrea Howard](#) directly. Alternatively, if it is for a grant that would bring more than £50k to Psychology, you can register your plans at the department site as these submissions are also sent to RIS.

[Register Grants here](#)

IMPACT

The Pro Vice Chancellor Research, Professor Caroline Meyer, on 5 April announced five new institutional funds totalling £2.8million, to drive the development of Warwick's research impact over the next three years.

Researchers will be able to apply for grants of between £3,000 and £50,000 for projects which create societal and economic impact from their findings.

New funding will be available to support researchers working in the areas of Engineering and Physical Sciences, Medical Sciences, Space Science, Biosciences, Arts and Humanities. The new funds will complement an existing [Impact Acceleration Account from ESRC](#) for the Social Sciences and a [Warwick Wellcome Trust Translational Partnership](#), which is driving the translation of research into improvements in human health.

The new awards include a £1.8m EPSRC Impact Acceleration Account, a £414K MRC IAA Confidence in Concept Award, and an additional £70K funding from STFC. UKRI have requested that we do not publicise our IAA awards externally at the current time, but internal calls can be launched shortly. We therefore ask that this communication is not shared beyond Warwick.

In addition to the UKRI awards, Professor Meyer has allocated funding to support a Biosciences Impact Fund and an Arts and Humanities Impact Fund. Both will run for three years beginning April. In addition, the University will extend our STFC Award for a further two years. Together the three funds represent a total University investment of £584,000.

[Subscribe](#)[Past Issues](#)[Translate ▼](#)

- EPSRC IAA: [Grace Prewett](#)
- MRC IAA: [Kevin Marks](#)
- STFC and Space Science Funds: [Grace Prewett](#)
- Biosciences Impact Fund: Dr [Josh Cartwright](#)
- Arts and Humanities Impact Fund: [Emma Roberts](#)
- ESRC IAA: [Carolyn Silvester](#) and Dr [Helen Ackers](#)
- Warwick Wellcome Trust Translational Partnership: [Josh Cartwright](#)

Biosciences Impact Fund – call deadline 6 May

The newly launched Biosciences Impact Fund (BIF) is designed to maximise wider economic and societal benefit from biosciences and biotechnological research at the University. The fund drives impact arising from bioscience disciplines, including but not limited to: plant and crop science, chemical and synthetic biology, applied mechanobiology and biomedical research, combatting antimicrobial resistance, biological engineering and environmental bioscience. The BIF is funded through the University's Higher Education Innovation Fund (HEIF) allocation provided by Research England. There is no requirement for any previous biosciences grant funding so long as projects are under remit.

Applications are encouraged from across the biosciences community at the University, including from technicians and early career postdoctoral researchers. Policy-centred projects may be submitted through the Proof of Concept scheme. Contributions from external partners are strongly encouraged where possible. Projects lasting greater than 12 months will be considered. There are three core schemes individuals can apply for:

Proof of Concept funding - This scheme advances early-stage projects with promising commercial potential towards validation of concept and prototype development. It can also be used to prove evidence-based policy concepts to change practitioner policy or impact upon third and public sector organisations. Indicative £30,000 per annum available, for two to three projects.

Innovation Accelerator funding - The Innovation Accelerator is a flexible pump-priming mechanism which seeks to advance proven mid-TRL concepts and knowledge exchange. Projects can span multiple years and fund several related strands of activity, including workshops with partners. Projects over multiple years must provide project milestones, and release of funding for subsequent years after the first will be based on performance against these milestones. Indicative £40,000 per annum available, for one to two projects.

Business Engagement Vouchers and Fellowships - Fellowships enable early career researchers and technicians to spend time with industry, in order to provide personal skills development and facilitate knowledge exchange. Business Engagement Vouchers can be used for any form of business engagement an applicant wishes to undertake, including events, inward industrial placements/secondments and buy-out of RTP or facility time. Indicative £30,000 per annum, for up to two fellowships combined with smaller voucher awards.

All further details and eligible costs can be found on the [Biosciences Impact Fund website](#). To discuss submitting an application or for general queries, please contact [Josh Cartwright](#).

[Submit a proposal to the Energy GRP Summer Internship Programme](#)

Researchers are invited to submit proposals for a fully-funded undergraduate to join their team over the summer as part of the [Energy GRP Summer Internship Programme](#). See the relevant research areas and apply by 11 May.

[Subscribe](#)[Past Issues](#)[Translate](#) ▼

[Research in Psychology](#). Learn more about research into understanding [why the gender gap in personality traits is widening](#) in more developed areas.

[Research Champions sought for STEM Grand Challenge](#)

We're looking for Research Champions to help develop the STEM Grand Challenge vision for research within five key themes. Take a look at [what's involved](#) and see how to express your interest.

The [RDF 2022-23 Strategic Awards](#) call has been launched.

Awards of up to £25,000 are available to support the development of future external funding bids in areas of pioneering, world-class research. Proposals that involve early career researchers, external partners, and/or inter-disciplinary approaches to global challenges will be particularly welcome. Applications to the RDF should have **HoD approval** and should be submitted via the application form (attached) to warwickrdf@warwick.ac.uk by **5pm on Friday 13 May 2022**.

Applicants are asked to read our full [Terms and Condition](#) regarding eligibility and eligible costs. Please contact Hattie Hine (H.Hine@warwick.ac.uk) or Colette Kelly (Colette.Kelly@warwick.ac.uk) if you have any queries.

Rapid Response Funding we still have available in the EPSRC IAA 2020-22

Please note the maximum funding has increased to £5,000.

The EPSRC IAA has a small allocation of funding for rapid response activities. As part of this scheme, the University is offering funding for short notice impact development opportunities – such as meetings with potential industrial collaborators or to give evidence at select committees or opportunities to influence UK government and parliament policy. It will also enable researchers who are beginning to explore generating impact from their research to travel and meet potential industrial partners before they apply for further impact funding. Any and all projects must have current or prior linked EPSRC funding. This is an open scheme with no deadline for applications. All funds must be spent by 30th June 2022. Additional key details as follows:

- Applications of up to £1,000 can be made, with costs appropriately itemised in "Justification of resources" below
- Due diligence checks will be performed on project partners before work can commence
- A final report will be required after work has completed requiring input from the project partner, as well as an additional report three months following completion to capture any subsequent benefits to the project partner
- Applications must be submitted on the application form to research_impact@warwick.ac.uk Contact: Grace Prewitt RIS

[Link to application form](#)

[response to the National AI Strategy](#). Grants must be spent by 31 August 2022. Find out more.



UNICA-EUTOPIA TRAIN webinar on ‘Successful strategies in applying for citizen science funding’

17th May 2022, 10.30 to 12.00 CEST.

Please click [here](#) to view the programme and to register for the event. Contact: Hattie Hine (H.Hine@warwick.ac.uk)

The EUTOPIA Connected Research Communities aims to **connect research initiatives** across EUTOPIA and beyond and **enable researchers and innovators to grow their ideas** in any science and technology field **by sharing them with their peers**. The EUTOPIA Connected Research Communities is a bottom-up call for networks focusing on activities related to a global challenge or SDG to boost societal, economic, political and/or scientific impact.

WHO CAN APPLY?

All EUTOPIA researchers within all research fields and disciplines from one of the 6 founding EUTOPIA universities are eligible as paid members.

CALL FOR APPLICANTS

We invite all interested researchers to consult the call for applicants posted on EUTOPIA's alliance webpage: <https://eutopia-university.eu/english-version/opportunities/research/connected-research-communities> and send in their applications by **10th June 2022**.

INFO WEBINAR

An information and Q&A webinar will take place on the **11th of May, between 13:00 – 14:00**. Those interested to attend are welcome to do so at the link below:

Contact: Hattie Hine RIS

Develop science and technology ideas with peers

This call is an opportunity for researchers within the EUTOPIA Alliance to share and develop their ideas in science and technology with their peers. Learn more about the EUTOPIA Connected Research Communities and how to apply.

EPSRC IAA 2022-25

Call deadline: **23 May**

The EPSRC Impact Acceleration Account (IAA) supports a range of activities to maximise impact from EPSRC funding or research within the EPSRC remit. We expect IAA funding to add value to existing research and take advantage of new opportunities, including interdisciplinary working and engagement of new collaborators.

Funding Opportunities Available:

1. Institutional Pump Priming

Contact: Grace Prewett.RIS

2. ECR Pump Priming

Funding of up to £10,000 is available for Early Career Researchers to undertake small impact projects which encourage engagement and facilitate collaborations with end users of research.

Activities could include: Sandpit workshops: focussed workshops with stakeholders; Short secondments in and out of the University with non-academic stakeholders; Visits to industry and relevant events to build contacts and sector awareness.

3. Secondment/Exchange Scheme

Funding is available for 'mini-KTP' secondments which will facilitate knowledge transfer from the university to collaborators (a business or other organisation). This award will give researchers the chance to trial projects and collaborations that are too early for a KTP (Knowledge Transfer Partnership), but may lead to a KTP application in future.

All further details and eligible costs can be found on the [EPSRC IAA 2022-25](#) website

Contact: grace.prewett@warwick.ac.uk

[Subscribe](#)[Past Issues](#)[Translate ▼](#)

Fellowship for Foreign Researchers (Short Term)

Deadline: 1 June 2022

provides the opportunity for short-term visits for UK, European, North American and Canadian researchers ordinarily based in the UK or Ireland to do cooperative research with leading research groups at Japanese Universities and Institutions. The programme is designed to provide researchers with first-hand experience of the research and living environment in Japan, whilst expanding academic exchange between Japan and the UK or Ireland. Researchers from any field; Computer, Engineering, Health, Biological, Life, Natural and Physical Sciences, Mathematics, Humanities and Social Sciences etc. are eligible to apply. Awards will cover visits of 1 to 12 months.

Visit the JSPS London website here for further information:

https://www.jsps.org/latest_calls/2022/03/fy2022-jsps-london-call-for-the-short-term-prepostdoctoral-fellowships-for-research-in-japan-final-call-for-fy2022.html

The Wellcome Data Prize in mental health will support collaborative approaches to research into anxiety and depression in young people

Application deadline: 5 June

<https://wellcome.org/grant-funding/schemes/wellcome-mental-health-data-prize>

The Wellcome Data Prize in mental health will support collaborative approaches to research into anxiety and depression in young people. Teams in the UK and South Africa will explore existing data to find new insights and build digital tools that enable future research.

Level of funding: *There are three phases to the prize, each six months long and with different levels of funding and support on offer:*

- *Discovery phase: 10 teams will be selected to receive £40,000 of funding*
- *Prototyping phase: 5 teams will be selected to receive £100,000 of funding*
- *Sustainability phase: £500,000 will be allocated across 3 winning teams*

More details or help finding potential partners: **Tania Zahorskaya**
International Partnerships Manager

Call for participants

The WITHIN Study are looking for volunteers aged 18-65 with chronic pain to take part in their Lab-Based Study in the Sleep & Pain Lab, based at the University of Warwick Central Campus. If you experience chronic pain (pain that has persisted for more than 3 months) or have a chronic pain condition such as arthritis, fibromyalgia, inflammatory bowel disease, chronic migraines etc, or you know somebody who does, please read the information below.

A snapshot view of what participating entails: This lab-based study aims to understand the role that mental defeat and mental victory have in underpinning different experiences of chronic pain. If you agree to take part, you will be invited to attend a test session at the University of Warwick Sleep and Pain Laboratory located at the main Central Campus (Coventry) with one of the researchers.

The test session typically takes no longer than 2.5 hours. As a thank you for your time, you will receive a £20 Amazon voucher at the end of the lab-based study.

More details can be found in the [Participant Information Leaflet](#).

If you would like to take part in our lab-based study, please complete the short screening questionnaire so that we can make sure that you are eligible. Click the link [here](#).

If you require any further information about the study, please do not hesitate to contact our team (withinstudy@warwick.ac.uk).

[Paige Karadag](#), Warwick Sleep and Pain Lab

Do you have chronic pain?



Volunteers are needed to take part in psychological research which aims to help explain distress & disability in chronic pain.

You may qualify if you:

- Suffer from chronic pain
- Are aged 18 & over
- Are English-speaking

Visit our webpage for more information and how to take part:

<https://warwick.ac.uk/fac/sci/psych/research/lifespan/sleeplab/projects/within>

Contact us:

WITHIN Study
Warwick Sleep & Pain Lab
Withinstudy@warwick.ac.uk
Tel: 07385600421

To take part, read our information leaflet and complete the short screening-questionnaire or get in touch with us!



UK Research
and Innovation



National Institute
for Health Research



Warwick Study of Mental Distress in Chronic Pain

Participant Recruitment Poster (v2.1d) (IRAS Number: 223190) 13/03/20

HR

Remember to tell your line-manager and record coronavirus absence in SuccessFactors if you have tested positive and cannot work.

Personal Development Conversations

[Subscribe](#)[Past Issues](#)[Translate](#) ▼

This year, the Personal Development Review (PDR) process will take place in the form of a Personal Development Conversation (PDC). More information for staff on how the process will be run in Psychology coming by email soon.

Personal Development Conversations coming soon

Your Personal Development Conversation will be an important opportunity to recognise achievements, review development, look forward together, identify development opportunities and discuss career aspirations and wellbeing. You'll need to have this conversation with your line manager between 16 May and 29 July. No documentation needs to be completed. [See more details](#), including guidance for line managers

Academic Probation Forms updated

View the [recently updated Academic Probation forms](#) for those at grade 7 on a Research & Teaching focussed pathway, bringing them in line with the promotions criteria. [Learn more.](#)



Planning to travel?

1 Email [Catherine Johnstone](#) to get registered as a booker for Key Travel.

2 As a condition for valid [Business Travel insurance](#), Complete Risk Assessment downloaded [here](#) before booking travel. Email to HoD.Psychology@warwick.ac.uk to get HoDs approval.

3 Email [Anita Burrows](#) to raise a purchase order once quote has been obtained from Key Travel (working days Mon/Tues/Thurs).

4 Email [Steve McGladrigan](#) with any queries about the policy.

[Read about the temporary financial regulations in place to ease problems with Key Travel booking implemented 20 April 2022.](#)

KEY TRAVEL - APPROVED BOOKERS

*After feedback from departments about the unacceptable wait times being experienced when trying to contact Key Travel by telephone or email, they have implemented a recovery plan which is operational with immediate effect. **The Travel Enquiry Form should not be used until further notice.** This will ensure that calls and emails are picked up and responded to in a much more timely manner by a dedicated Warwick team. Use of the Key Travel portal to make bookings remains the most efficient way to book travel requirements in most cases, but access to a dedicated Warwick support team is a welcome development. The dedicated service team is available on 0161 819 9812 Monday to Friday 08:45-17:30 with 24/7 telephone support via the same number. The new email address is warwick@keytravel.com. Further information can be found on this [website](#).*



TRAVEL SURVEY

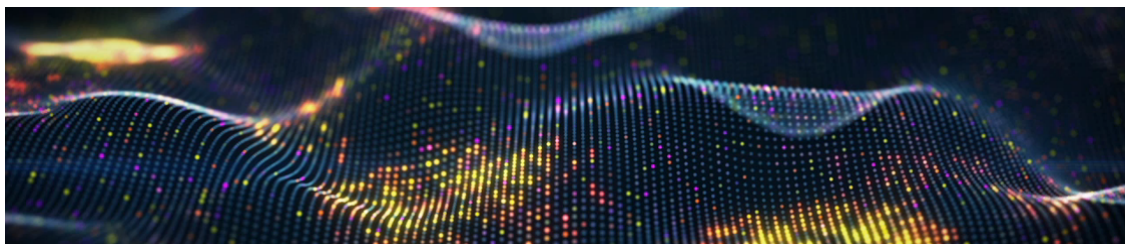
Take 10 minutes to tell us more about how you view your travel options and challenges, to help us continue to improve campus travel and access. Your chance to comment on the recent changes.



New: Electric Car salary sacrifice scheme

Take a look at the [Electric Car Salary Sacrifice Scheme](#) to see how it works.

Learn More



May Holiday Scheme

Bookings are now open for the children's May Holiday Camp between 30 May - 1 June. Find out more information and book now to receive discounted staff prices up until 15 May.



Staff Culture: Share your experiences

Learn more about our Staff Culture Survey and share your experience and sense of belonging and inclusion here at Warwick. By taking 20 minutes to share your thoughts, you can help to identify diversity, equity, and inclusion gaps, and inform decision-making and plans to address these.

Creating and supporting a diverse and inclusive research culture

A reminder that if you're a researcher, or an academic and professional services staff member who supports them, you're invited to register your

Warwick INspire programme

Find out about the INspire Programme from **Kita**, and Parvez Islam, Director of Environmental Sustainability, past participants of the INspire programme designed to inspire greater diversity in leadership.

News from Kate Messenger our ED&I & Wellbeing Champion

Gender Task Force – [Further Information](#).

Gender Initiatives – [Further Information](#).

Overview of Social Inclusion Taskforces – [Further Information](#).

We welcome applications from all staff in all roles, permanent or fixed-term, full or part-time, academic, academic-related, CCSG, Community Safety Team, Estates, and Professional Services.

To apply for these positions, please submit a paragraph (no more than 250 words) outlining why you wish to sit on the Taskforce to SocialinclusionPA@warwick.ac.uk (subject field GTF Recruitment) by Friday 6th May 2022.

Making Warwick a better place to live, study and work

Nominate yourself, someone else or a team for a Social Inclusion Staff Award recognising those who've made an outstanding contribution to celebrating diversity, supporting an inclusive culture or demonstrating leadership on social inclusion work. All staff are eligible. Find out more and apply by 15 May.

Development Opportunities

New Warwick Principles and Social Inclusion course

As part of our ongoing commitment to creating an environment where all members of our communities can thrive, we're introducing a new essential Warwick Principles and Social Inclusion course. It will help to ensure that we all have a shared understanding of what we expect of each other as members of the Warwick community. You're asked to complete this around the same time as your PDC.

Development opportunities

Don't forget to explore development opportunities available at Warwick.

If you're currently at Professor, Reader, or Associate Professor levels, consider registering your interest in How Warwick Works, a shadowing and development scheme for academics to support your leadership development.

Complete new Fire Safety

[Subscribe](#)[Past Issues](#)[Translate](#) ▼

Find out more about the new [Fire Safety Training module](#) that is to replace previous Fire Safety Awareness, Fire Extinguisher and Fire Warden Moodle training packages. Completion should take approximately 30 minutes and is mandatory for all staff and students.

Student Visa Compliance Moodle module

Staff working with students or with sponsor obligations relating to sponsored students (including administrative staff in academic departments and professional services and academics who are Personal Tutors) are invited to complete the [Student Visa Compliance Module](#) on Moodle by 23 September

Online Learning Resources

Wellbeing

Managing stress

Share your fun or unusual ways to help [reduce stress](#) to be in with a chance of winning a prize this National Stress Awareness month. See the resources available at Warwick and externally to help manage stress levels and avoid burnout.

Subscribe

Past Issues

Translate

Our campus and its surrounding areas offer great opportunities for scenic walks.

Try one of the walking trails planned by our Estates team bit.ly/3lzrtX

#WarwickSpring submissions by @ pihu.jain26, zhaoyang9493 and illusionistd90 (Instagram) and @helenb2454



A non-judgmental, non-advisory, confidential, student-run listening service

Call: 02476 522199 or 02476 574322

IM: warwick.nightline.ac.uk/im

Mon-Fri: 9pm-9am

Sat-Sun IM only: 9pm-1am

Drop in at our building on campus: Free condoms, tampons, pregnancy tests, ear plugs etc

Get 24/7 mental health and wellbeing support

Access [Togetherall](#), a safe place to talk, share and support others like you, available free to all staff and students. It's an anonymous community where you can express how you're feeling, get support and do courses at your own pace

Please reach out for support if you need it, either through your department or the [Employee Assistance Programme](#). You can also access self-help tools through the [Staff Wellbeing Hub](#) and [Wellbeing Support Services](#) (support for students).

Interested in finding more about Sustainability? Join the [Psychology GREEN TEAM](#)

ENVIRONMENTAL SUSTAINABILITY NEWSLETTER FOR APRIL IS [HERE](#).

Commonwealth Games

– what's happening at Warwick

We're helping set the West Midlands stage as our region hosts the Commonwealth Games in 2022. Read on to find out more about Warwick's role and how our facilities will be used by 2,000 world-class, international athletes.

The Birmingham 2022 Commonwealth Games are taking place 28 July - 8 August 2022 in towns and cities across the West Midlands. The Games provide the opportunity to once again showcase the region's ability to thrive in the global spotlight, following hot on the heels of Coventry City of Culture 2021.



[Subscribe](#)[Past Issues](#)[Translate ▼](#)

Have fun at the Coventry Station Community Day on Saturday 7 May, a free family-friendly event celebrating both the development of Coventry's railway station and its 60th anniversary. With food, music, performances and plenty of activities for all ages!

The poster features a dark blue background with a glowing, futuristic train silhouette composed of interconnected nodes and lines, resembling a network or data visualization. The train is oriented horizontally, moving from left to right. The text is white and positioned in the lower half of the image.

HIGHLYSPRUNG
THEATRE THAT MOVES

Coventry Station Community Day

Join us on Sat 7th May for a **FREE** aerial performance & community day with music, theatre & activities for all ages.

COMMUNITY EVENTS: 12pm - 3.30pm - just show up!

EVENING SHOW: 5pm & 7pm - free but ticketed
Book at highlysprungperformance.co.uk/production/in-transit/

IN PARTNERSHIP WITH AVANTI WEST COAST, HEART OF ENGLAND COMMUNITY RAIL
ALT PARTNERSHIP, COVENTRY CITY COUNCIL AND COMMONWEALTH CONNECTIONS



COVENTRY OPENS

VARIOUS LOCATIONS

[Show on map](#)

From the classic performance spaces like The Belgrade and Warwick Arts Centre to newly opened buildings such as Drapers' Hall and hmv Empire, plus many smaller spaces such as libraries, community centres, and faith buildings, venues are throwing open their doors with 200+ events and activities ready to give you an extra warm welcome this weekend.





And finally...

Warwick MRC Retweeted

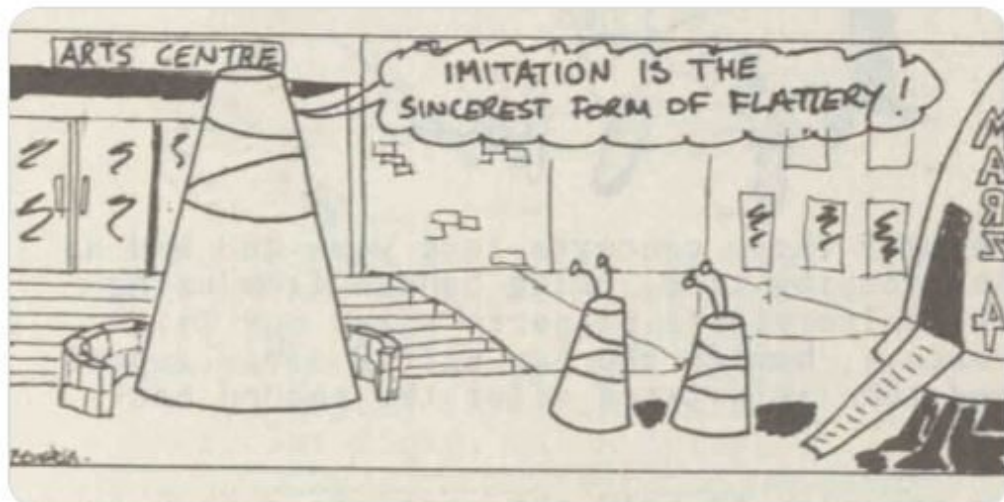


Warwick Uni Library @warwicklibrary · 45m

...

Did The Koan come from a galaxy far, far away? 50 years certainly feels like a long time ago...

(Taken from the 1980-81 @WarwickSU Handbook, archived by @MRCWarwick)



[Subscribe](#)

[Past Issues](#)

[Translate](#) ▼



Copyright (C) *|2022|* *|University of Warwick Psychology Department|*. All rights reserved.

Our mailing address is:
*|c.j.johnstone@warwick.ac.uk|**|*

This email was sent to c.j.johnstone@warwick.ac.uk
[why did I get this?](#) [unsubscribe from this list](#) [update subscription preferences](#)
University of Warwick · Gibbet Hill Road · Coventry, West Midlands CV4 7AL · United Kingdom

Grow your business with  **mailchimp**