

[View this email in your browser](#)



12 May 2022



Email contents to Catherine Johnstone c.j.johnstone@warwick.ac.uk

Psychology Bulletin

News

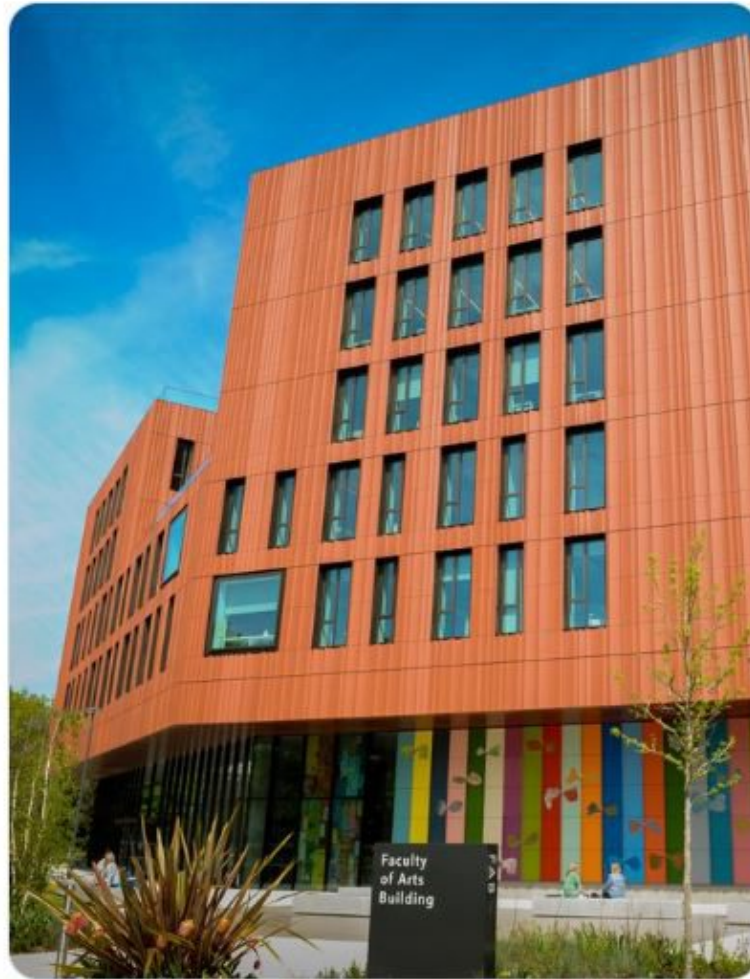
Find out about REF outcomes at Warwick [here](#)

FAB Fest – Celebrate arts and creativity at Warwick

Explore what a world without the arts would look like in our specially curated Escape Room, enjoy a language taster session, or have a tour of the impressive Faculty of Arts Building at FAB Fest on 20 May. [Register your interest and view the full programme](#), delivered by our academic staff, students, alumni and guest artists, speakers and practitioners.

Join us to celebrate the official opening of our new Faculty of Arts building on 20 May! The ceremony will be followed by #FabFest - a whole host of activities to celebrate arts and creativity on campus 🥰

The event is free - register your interest here: bit.ly/38jGGea



University Race Equality Charter award



The University have been awarded the Race Equality Charter Bronze award, which is an independent recognition of our commitment to working towards race equality. We spoke to some of those involved in our submission [about the award and the work we still have to do.](#)

[Learn More](#)

Departmental dates



Want to check key departmental events and dates (including exam boards, away days and graduation)? Check out the Key Dates calendar:

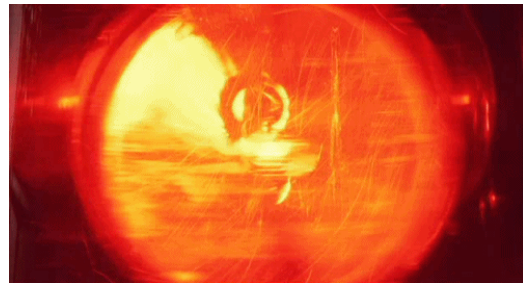
[Calendar](#)

Emergency & Help

All Emergency calls on campus (fire, police, ambulance) x 22222 or 024765 22222 need to go through Community Safety.

(save to your MOBILE!)

[Learn More](#)



Planning to travel (staff and PGRs)?

Read [HR checklist for travel](#) noting restrictions on the type of accommodation that can be booked and through who (**KEY TRAVEL ADVISED**). Note requirement for Fin Regs approval via Steve McGladrigan **IN ADVANCE** of booking any non-standard accommodation:

- If you are booking accommodation that is being made available or is approved by the Institution / University being visited as the purpose of the business trip additional FinRegs approval is not required.

standards imposed. The University does NOT recommend using AirBnB properties – approval from FinRegs and Health & Safety must be sought if AirBnB is being considered, and there are additional procedures and checklists that must be followed.

1 Read the Overseas Business travel Insurance Policy:

<https://warwick.ac.uk/services/finance/insurance/keypolicies/traveloverseas/>

2 Email [Catherine Johnstone](#) to get registered as a Booker for Key Travel being mindful of the temporary financial regulations relating to Key Travel here: **[Read about the temporary financial regulations in place to ease problems with Key Travel booking implemented 20 April 2022.](#)**

3 Complete Risk Assessment before booking travel to comply with business insurance requirements - DOWNLOAD from this page:

https://warwick.ac.uk/services/healthsafetywellbeing/guidance/travel_health

Email to HoD.Psychology@warwick.ac.uk to get HoDs approval.

4 Email [Anita Burrows](#) to raise a purchase order once quote has been obtained from Key Travel (working days Mon/Tues/Thurs).

5 Email [Steve McGladrigan](#) with any queries about what expenditure can be reclaimed BEFORE making any bookings.

CONFERENCE BOOKING GUIDANCE - Fin Regs

- Conference bookings (fees) do not require FinRegs approval
- If accommodation is included as part of the conference package, FinRegs approval is not required
- If preferential rates are offered for conference attendees at the conference hotel or a nearby hotel, this can also be booked without FinRegs approval
- If the conference is outside of Europe, or in Europe and travel costs will be more than £500, flights should be booked through Key Travel, per the University policy

All other FP16 and Travel Policy requirements apply, including the requirement for any staff and PGR students intending to undertake overseas business-related travel to seek departmental budget approval, complete a risk assessment and ensure that appropriate travel insurance is in place.

Also, as a reminder, the University does NOT recommend using AirBnB properties for accommodation bookings – approval from FinRegs and Health & Safety must be sought if AirBnB is being considered, and there are additional procedures and checklists that must be followed.



COMMUNITY SAFETY



Forgotten your keys/pass? No-one around? Call Community Safety:

24-hour Control Centre (general enquiries) internal extension x22083 or 024 7652 2083

Community Safety

EVENTS



Monash Alliance Showcase

On Tuesday 17 May 11.00 – 13.00, the **Monash Warwick Alliance Showcase** will announce new funding opportunities for researchers, educators, professional staff, and students interested in establishing collaborations with Monash colleagues.

- Doctor Martine J. Barons, Department of Statistics
- Caroline Gibson, IATL; Claire O'Leary, former Head of Internationalisation, Student Opportunity; Marianna Slutskaya, Student Project Officer
- Student representatives of the "Multilingualism and Diversity" Summer School
- Professor Jo Angouri, Academic Director (Education and Internationalisation)

To register to attend, visit: <https://warwick.ac.uk/global/partnerships/mwa/10-year-programme/>

Internal Seminars



A chance to hear about the research going on in the Department from our PhDs and research staff. Organiser: Suzanne Aussems

[See Events](#)

Already presented: *Erika Aparicio, Kayleigh Caffyn, Ellie Horton, Yuqi Ye, Yunziao Li, Pip Brown, Yuyao Cheng, Morgan Appleton, Mingtong Li, Lucas Marti, Rebecca Plimmer, Halleyson Li*

11:00 Weds 18 May

Eugene Malthouse, Isabelle Barrett, Charlotte Gannon, Duaa Ashoor

Full details of talks are on the [Events calendar](#)

Language and Learning group Seminars



Co-ordinator: [Marta Wesierska](#)

Bi-weekly programme on alternate weeks to Internal Seminar **12:00 Wednesdays**. Details published on Events calendar and TEAMS links circulated in advance of talks to Language and Learning Group members. If interested in joining the mailing list, contact [Marta](#) Wesierska.

12:00 Wednesday 18 May Alexandra Bosshard

“From collocation to call-ocation: using linguistic methods to quantify animal call combinations”

Abstract:

Emerging data in a range of non-human animal species have highlighted a latent ability to combine certain pre-existing calls together into larger structures. Such evidence suggests that the capacity to string meaning-bearing units together, a key feature of language also known as syntax, could be evolutionary more ancient than previously thought. Currently, however, the quantification of call combinations has received less attention. This is problematic because animal calls can co-occur with one another simply through chance alone. One common approach applied in language sciences to identify recurrent word combinations is collocation analysis. Through comparing the co-occurrence of two words with how each word combines with other words within a corpus, collocation analysis can highlight above chance, two-word combinations. In this talk, I will demonstrate how we showed that this approach can also be applied to non-human animal communication systems by implementing it on a vocal dataset of our closest-living relative, the chimpanzee, *Pan troglodytes*. Specifically, we recorded 37 different two-call combinations but following the application of collocation analyses only 15 of these were found to occur at levels significantly above chance. We argue that collocation analysis therefore represents a promising tool for identifying non-random, communicatively relevant call combinations in animals and, ultimately, helps to further our understanding of the evolutionary progression of our own combinatorial communication system, language.

Organised by: Marta Wesierska

Coming soon:

12: 00 1 June

Hirromichi Hagihara

tba

12:00 15 June

CEDAR Seminar: “The Irish Longitudinal Study on Ageing (TILDA) intellectual disability supplement”

11:00 - 12:00, Wed, 18 May '22

Professor Mary McCarron from Trinity College Dublin, who will be speaking about “The Irish Longitudinal Study on Ageing (TILDA) intellectual disability supplement”. If you are interested in attending this seminar, please contact s.cedar@warwick.ac.uk for the joining details.

Warwick Turing Fellow Hosted Catch Up Series 2022:

[Subscribe](#)[Past Issues](#)[Translate](#) ▼

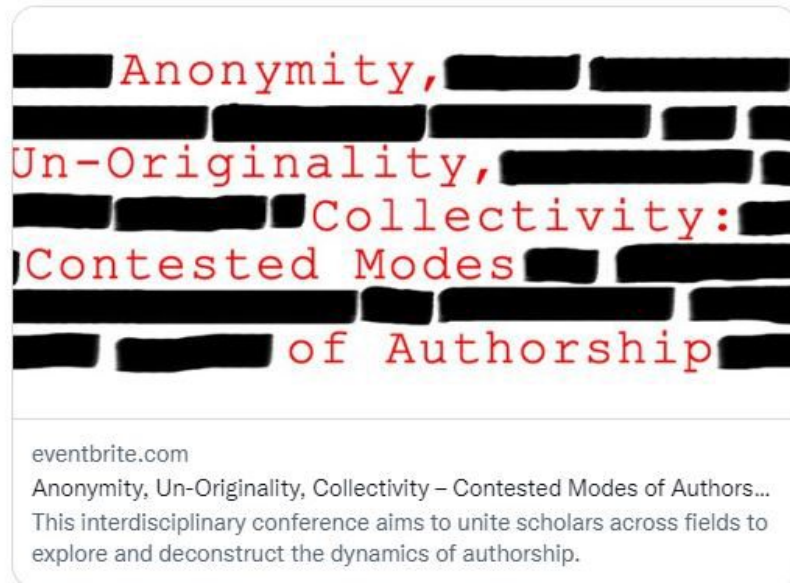
Warwick Data are hosting a series of catchups to showcase the latest developments in data science and artificial intelligence, with talks from Turing Fellows and leading researchers at The Alan Turing Institute. The event is also designed to facilitate connections between Warwick Turing Fellows and the broader University community. For more information, please use this [link](#)

IAS Warwick Retweeted



IAS Conference Contested Modes of Aut... @authorship... · May 10 ...

If you'd still to register the conference in person, we've slightly extended the deadline, so registration closes at midnight to make sure everyone who wants to attend can do so. Online reg will be open until midnight May 20th. Details below:



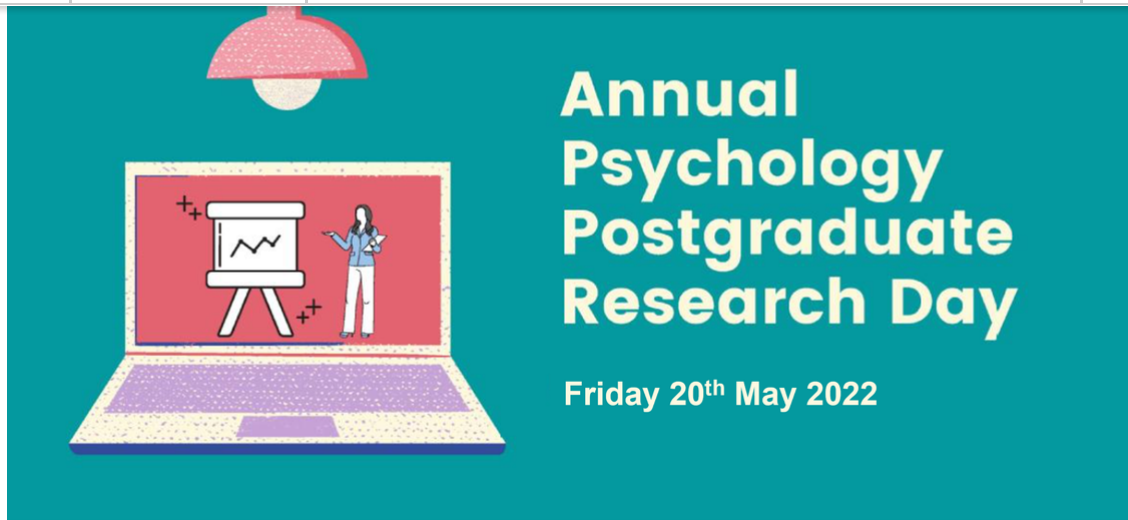
Anonymity, Un-Originality, Collectivity: Contested Modes of Authorship

This interdisciplinary conference aims to unite scholars across fields to explore and deconstruct the dynamics of authorship.

Fri, 20 May 2022, 09:15 – Sat, 21 May 2022, 18:30 OC1.06

This interdisciplinary conference is a hybrid event, hosted by the Institute of Advanced Study, University of Warwick, UK, May 20-21, 2022.

[Learn More](#)



PGR Research Day: 20 May 2022

To attend, you need to register by 16 May to reserve your Gather Town booking: [Registration Form](#)

Here from psychology postgraduates about their research.

PhD Student Publication Award 2021 awards presented.

This event is an opportunity for psychology postgraduates to present their research (as a talk or a poster) to an audience of fellow students and academic staff within the Department of Psychology. The event is also open to [Clinical Psychology Doctorate \(DClin\)](#) students.

Venue: Gather Town

Organisers: **Arij Yehya, Duaa Ashoor, Sara Morales Izquierdo** and **Zhihong Huang**

Warwick R User Group: Code Review Meetup (in person)

Wednesday 17 May

Iain Emsley (CIM), will give a brief introduction to code review, then we will split into small groups to review samples of R code.

The WRUG organizers will come prepared with some code samples, but we encourage you to bring your own for friendly feedback! It could be an R script, an R markdown, a

Subscribe

Past Issues

Translate ▼

section of the code (~50-100 lines) in detail, or it could focus on overall design/approach for an app or package. If you are using GitHub, it could be a pull request review - i.e. reviewing changes to the code rather than the code as a whole.

Postdocs and Postgraduates



IAS Warwick @IASWarwick · 41m

...

The #IASAccolade Academic Careers and Leadership Development Programme is back for another term! 🎉

warwick.ac.uk/accolade

If you're a postdoc @Warwick_Science @ArtsWarwick @Warwick_SocSci join us as a Fellow to take part: warwick.ac.uk/fac/cross_fac/... #ecr #postdoc #training #support



PGR workshop: Preparing for

[Subscribe](#)[Past Issues](#)[Translate](#) ▼**Tuesday 7 June 15:00 - 17:00 OC0.04**

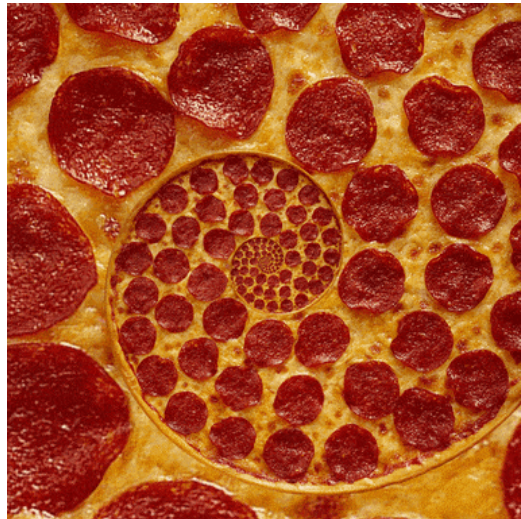
We will cover both general principles of how to give a good interview as well as specific issues that are likely to come up in academic job interviews. The session aims to be useful not only for people applying for academic jobs, but for all jobseekers likely to encounter an interview in the future.

[Sign up](#)

PGR Social

Tuesday 7 June: 17:30 Varsity

Suzanne Aussems and Sam Johnson will host a social event for PGRs - all welcome!

[Learn More](#)

Subscribe

Past Issues

Translate ▼



Exciting news — We're sending out the first issue of our new @warwickuni PhD Newsletter soon, including info on the @warwickrssp Next Steps Careers Programme, and an upcoming LGBTQIA+ focus group.

So please keep an eye out and do let us know what you think about it 😊



Research Exchange @ResearchEx · 1h
PGRs who teach - join the #APPPGR programme!

warwick.ac.uk/fac/cross_fac/...



Sara Hattersley @sarahattersley · 3h

Calling @warwickuni PGRs who teach! There's one more opportunity to join the #appgr programme this summer! Learn about pedagogy with peers from across the faculties! Click here to find out more: warwick.ac.uk/fac/cross_fac/...

News form the Teaching Cafe for PGRs who teach:

Upcoming online workshop - embedding values within our teaching practices Hello Teaching Café Just to let you know that you are warmly invited to this upcoming online workshop. This will be a great opportunity to gain some practical support for embedding values within our teaching practices, and take part in piloting some toolkit activities. We hope to see you there! Embedding values within our teaching and supporting learning practices: introducing a toolkit

Tuesday 24th May 2022, 12pm - 1pm - Dr Jane Bryan (MS Teams)

This workshop will consider how to embed teaching about values into University education. Discussion will focus upon what ethical values are appropriate to introduce into our teaching and methods for teaching them. A toolkit with suggested activities will be introduced and reviewed in the session. An invitation will also be extended to any colleagues who may be interested in piloting and testing one or two activities with their students as a form of pedagogic research. Support for this piloting will be available and we will explore this further in the workshop.

inVISIBLE Research & Diversity Conference

The Warwick Black Chemistry Society (WBCS) in collaboration with the Institute of Advanced Study (IAS) would like to **invite you to attend and/or present at the inVISIBLE Research & Diversity Conference** at the **Zeeman Building**. The conference is part of an Equality, Diversity & Inclusion project (inVISIBLE) aimed at promoting the visibility of ethnic minorities in academia.

Registration to attend and/or present is available **here** and is open till **31/05/2022**.

We look forward to seeing you there and for any further questions, please visit: go.warwick.ac.uk/invisible_conference or contact wbc@warwick.ac.uk



Warwick Researcher Development liked

Warwick Doctoral College @DC_Warwick · 5h

Networking Fund EXTENSION — Postgraduate researchers now have until 23 May to submit their applications to our networking fund to receive up to £300 to fund educational, supportive, and creative networking events.

Find out more and apply here: bit.ly/3xW6TKg



[Subscribe](#)[Past Issues](#)[Translate](#) ▼

There is still time to submit your entry into this year's 3MT competition. Can you present your PhD thesis in just 3 Minutes? The winner will be entered into the regional final!

Don't forget – Entries must be submitted by 20 May.

Apply here: bit.ly/3JtyAML



3 Minute Thesis Competition
15 June 2022, 12pm

Submit your entries by 20 May!

3MT® THREE MINUTE THESIS
FOUNDED BY THE UNIVERSITY OF QUEENSLAND

The banner features a green background on the left with white text. On the right, there is a photograph of three students (two women and one man) smiling. Below the photo is the 3MT logo, which consists of a green circle with a white '3' inside, followed by 'MT' in blue and 'THREE MINUTE THESIS' in green. Below the logo, it says 'FOUNDED BY THE UNIVERSITY OF QUEENSLAND'.

[Nominate a researcher for the 2022 John Maddox Prize](#)

Forwarded by BPS. Please consider putting a colleague forward, and share the [nomination form](#) with your networks. If you have any questions or would like to informally discuss the criteria, please get in touch with me at johnmaddoxprize@senseaboutscience.org.



Deadline 16:00 30 May

[Learn More](#)

Don't forget to remind PGT students that the PTES survey is open until 16 May

[Subscribe](#)[Past Issues](#)[Translate](#) ▼

Share your views and help us shape and improve the postgraduate student experience. You could win a £500 Love2shop voucher 😊

warwick.onlinesurveys.ac.uk/warwickptes

[@WarwickPgHub](#)

POSTGRADUATE
TAUGHT EXPERIENCE
SURVEY

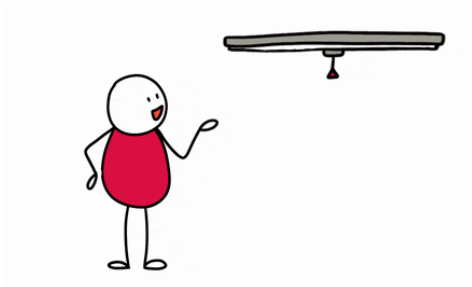
Complete PTES by 16 May 2022.
Your views can make a difference.

LET'S KEEP THE DIALOGUE GOING

WARWICK

Participate in research:

Student learning and student experience



PGRs - take part in a survey conducted by the Psychology departments at the University of Warwick and Birmingham City University to gather information about BAME students' learning and student experiences. All psychology students at the department can complete the survey regardless of their ethnicity.

[Survey link](#)

TEACHING

[Subscribe](#)[Past Issues](#)[Translate ▼](#)

[Reading Lists Rollover for 2022/23](#)

The Library has now rolled over all published 2021/22 reading lists and created drafts for 2022/23. If your module will be running again next academic year, please ensure all lists are published and any changes made by 31 July. [See more information.](#)

[Open call for WIHEA Fellowship](#)

The call for Warwick International Higher Education Academy Fellowship nominations is now open, providing an outstanding opportunity to engage with colleagues and students and develop new academic practices that will enhance the student experience. [Find out more and apply](#) by 15 June.

Bookable Moodle Support Sessions

The Digital Learning Environment (DLE) team is now offering a series of bookable one-to-one **Moodle Support Sessions**. These are intended to be short appointments to discuss users' needs and requirements so that we can advise on appropriate tools in Moodle for the activity they want to create. These sessions are not for reporting errors or issues which should still be submitted via the Help Desk. Appointments are available in the first instance between 11am and 1pm on Tuesdays, 1pm and 3pm on Thursdays and 10am and 12pm on Fridays. [Sign up to appointments with DLE staff via MS Bookings](#)



Warwick Celebrates

Class of 2020 and 2021

Warwick Celebrates

[Psychology Postgraduates, including DClin](#)

15:00 - 17:00 Sunday 10 July 2022

[Psychology Undergraduates](#)



Degree Congregation: July 2022

Psychology 2022 UG Graduation

11:00 - 13:00 Tuesday 26 July 2022

[Learn More](#)

News for your students:

[Outstanding Student Contribution Awards - last chance to nominate](#)

Know an outstanding student? You still have until 15 May to [submit nominations](#) for this year's OSCAs.


academic learning? Why not nominate them for an OSCA!

Nominations for the OSCAs close on Monday 16th May, so be sure to make yours now: bit.ly/3eBhYH1



 Finance&Funding @warwickfunding · May 3

Money can be a source of stress and anxiety for students. If you feel your wellbeing is suffering due to financial worries or difficulties, there is support available.

@warwickuni #Wellbeing #MentalHealth  #Students #Education #University #StudentLife

 An infographic titled "Wellbeing resources for students" with a teal background. It is divided into two main sections. The left section provides contact information for Wellbeing Support Services during and outside office hours. The right section lists financial support options for students, including short-term support and long-term support.

Wellbeing resources for students

During office hours:
Wellbeing Support Services can be contacted through the Wellbeing portal, 024 765 75570 or wellbeing@warwick.ac.uk

Outside of office hours:
Togetherall offers 24/7, anonymous support (togetherall.com)
Samaritans: call 116 123

For students

For short-term financial support:
Contact the Student Funding Team at studentfunding@warwick.ac.uk to see if you may be eligible for:

- an Emergency Loan
- Hardship Funding

For students

Make sure you're accessing all the financial support available to you, e.g.

- Student Finance
 - Maintenance Loan
 - Tuition Fee Loan
 - Disabled Students' Allowance, Parents' Learning Allowance, Childcare Grant, Adult Dependents' Grant

visit warwick.ac.uk/services/wss/ for further info

External R teaching event: Teaching Statistics with R in Psychology: Online symposium, 23 June.

On 23 June, we will be hosting an online symposium about teaching statistics in psychology using R. There will be talks from representatives of Lancaster University, Nottingham Trent University,

<https://www.ntu.ac.uk/about-us/events/events/2022/6/teaching-statistics-with-r-in-psychology>

News for your students

Careers Advice for students:

Siobhan Qadir, Careers Adviser



Warwick Uni Student Opportunity @SO_Warwick · 4h



Monash Warwick Student Opportunities Mini-Fair

Tuesday 17 May: Student Fair,

1.00PM - 2.00 PM

The Oculus

Join us to find out what the Alliance could offer you ow.ly/QPfn50J3HWG



RESEARCH AND IMPACT



Don't forget

[Subscribe](#)[Past Issues](#)[Translate ▼](#)

planning to submit a grant.

You can do so by contacting [Andrea Howard](#) directly. Alternatively, if it is for a grant that would bring more than £50k to Psychology, you can register your plans at the department site as these submissions are also sent to RIS.

[Register Grants here](#)

Sustainable Cities Research and Networking

Join a [Community Networking Event](#) on 27 May to meet other researchers across the University and find out more about how the Sustainable Cities GRP network can support you in your research career development.

IMPACT

The Pro Vice Chancellor Research, Professor Caroline Meyer, on 5 April announced five new institutional funds totalling £2.8million, to drive the development of Warwick's research impact over the next three years.

Researchers will be able to apply for grants of between £3,000 and £50,000 for projects which create societal and economic impact from their findings.

New funding will be available to support researchers working in the areas of Engineering and Physical Sciences, Medical Sciences, Space Science, Biosciences, Arts and Humanities. The new funds will complement an existing [Impact Acceleration Account from ESRC](#) for the Social Sciences and a [Warwick Wellcome Trust Translational Partnership](#), which is driving the translation of research into improvements in human health.

The new awards include a £1.8m EPSRC Impact Acceleration Account, a £414K MRC IAA Confidence in Concept Award, and an additional £70K funding from STFC. UKRI have requested that we do not publicise our IAA awards externally at the current time, but internal calls can be launched shortly. We therefore ask that this communication is not shared beyond Warwick.

In addition to the UKRI awards, Professor Meyer has allocated funding to support a Biosciences Impact Fund and an Arts and Humanities Impact Fund. Both will run for three years beginning April. In addition, the University will extend our STFC Award for a further two years. Together the three funds represent a total University investment of £584,000.

For further information, please contact the relevant fund managers below:

- EPSRC IAA: [Grace Prewett](#)
- MRC IAA: [Kevin Marks](#)
- STFC and Space Science Funds: [Grace Prewett](#)
- Biosciences Impact Fund: Dr [Josh Cartwright](#)
- Arts and Humanities Impact Fund: [Emma Roberts](#)
- ESRC IAA: [Carolyn Silvester](#) and Dr [Helen Ackers](#)
- Warwick Wellcome Trust Translational Partnership: [Josh Cartwright](#)

[Subscribe](#)[Past Issues](#)[Translate](#) ▼

Research Champions sought for STEM Grand Challenge

We're looking for Research Champions to help develop the STEM Grand Challenge vision for research within five key themes. Take a look at [what's involved](#) and see how to express your interest.

The [RDF 2022-23 Strategic Awards](#) call has been launched.

Awards of up to £25,000 are available to support the development of future external funding bids in areas of pioneering, world-class research. Proposals that involve early career researchers, external partners, and/or inter-disciplinary approaches to global challenges will be particularly welcome. Applications to the RDF should have **HoD approval** and should be submitted via the application form (attached) to warwickrdf@warwick.ac.uk by **5pm on Friday 13 May 2022**.

Applicants are asked to read our full [Terms and Condition](#) regarding eligibility and eligible costs. Please contact Hattie Hine (H.Hine@warwick.ac.uk) or Colette Kelly (Colette.Kelly@warwick.ac.uk) if you have any queries.



UNICA-EUTOPIA TRAIN webinar on 'Successful strategies in applying for citizen science funding'

17th May 2022, 10.30 to 12.00 CEST.

Please click [here](#) to view the programme and to register for the event. Contact: Hattie Hine (H.Hine@warwick.ac.uk)

EPSRC IAA 2022-25

Call deadline: **23 May**

The EPSRC Impact Acceleration Account (IAA) supports a range of activities to maximise impact from EPSRC funding or research within the EPSRC remit. Funding Opportunities Available:

Institutional Pump Priming

[Subscribe](#)[Past Issues](#)[Translate](#) ▼

undertake small impact projects which encourage engagement and facilitate collaborations with end users of research.

Secondment/Exchange Scheme Funding is available for 'mini-KTP' secondments which will facilitate knowledge transfer from the university to collaborators (a business or other organisation). This award will give researchers the chance to trial projects and collaborations that are too early for a KTP (Knowledge Transfer Partnership), but may lead to a KTP application in future.

All further details and eligible costs can be found on the [EPSRC IAA 2022-25](#) website

Contact: grace.prewett@warwick.ac.uk

Call for participants

The WITHIN Study are looking for volunteers aged 18-65 with chronic pain to take part in their Lab-Based Study in the Sleep & Pain Lab, based at the University of Warwick Central Campus. If you experience chronic pain (pain that has persisted for more than 3 months) or have a chronic pain condition such as arthritis, fibromyalgia, inflammatory bowel disease, chronic migraines etc, or you know somebody who does, please read the information below.

A snapshot view of what participating entails: This lab-based study aims to understand the role that mental defeat and mental victory have in underpinning different experiences of chronic pain. If you agree to take part, you will be invited to attend a test session at the University of Warwick Sleep and Pain Laboratory located at the main Central Campus (Coventry) with one of the researchers.

The test session typically takes no longer than 2.5 hours. As a thank you for your time, you will receive a £20 Amazon voucher at the end of the lab-based study.

More details can be found in the [Participant Information Leaflet](#).

If you would like to take part in our lab-based study, please complete the short screening questionnaire so that we can make sure that you are eligible. Click the link [here](#).

If you require any further information about the study, please do not hesitate to contact our team (withinstudy@warwick.ac.uk).

[Paige Karadag](#), Warwick Sleep and Pain Lab

[Subscribe](#)
[Past Issues](#)
[Translate](#) ▼

Do you have chronic pain?



Volunteers are needed to take part in psychological research which aims to help explain distress & disability in chronic pain.

You may qualify if you:

- Suffer from chronic pain
- Are aged 18 & over
- Are English-speaking

Visit our webpage for more information and how to take part:

<https://warwick.ac.uk/fac/sci/psych/research/lifespan/sleeplab/projects/within>

Contact us:

WITHIN Study
Warwick Sleep & Pain Lab
Withinstudy@warwick.ac.uk
Tel: 07385600421

To take part, read our information leaflet and complete the short screening-questionnaire or get in touch with us!



UK Research
and Innovation



National Institute
for Health Research



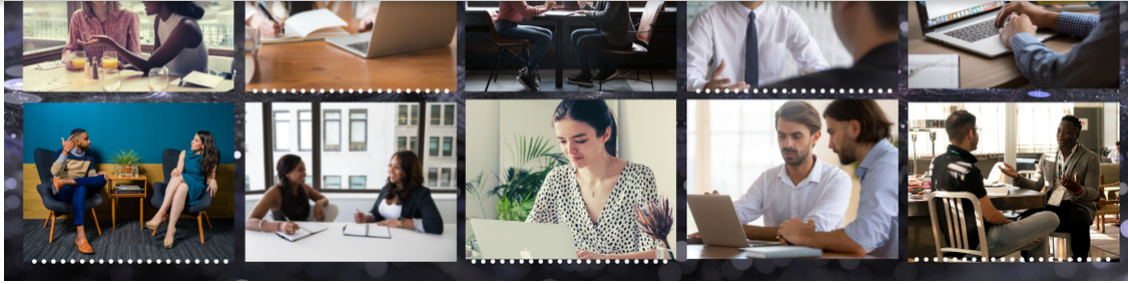
Warwick Study of Mental Distress in Chronic Pain

Participant Recruitment Poster (v2.1d) (IRAS Number: 223190) 13/03/20

HR

Remember to tell your line-manager and [record coronavirus absence in SuccessFactors](#) if you have tested positive and cannot work.

Personal Development Conversations

[Subscribe](#)[Past Issues](#)[Translate](#) ▼

This year, the Personal Development Review (PDR) process will take place in the form of a Personal Development Conversation (PDC). More information for staff on how the process will be run in Psychology coming by email soon.

Personal Development Conversations coming soon

Your Personal Development Conversation will be an important opportunity to recognise achievements, review development, look forward together, identify development opportunities and discuss career aspirations and wellbeing. You'll need to have this conversation with your line manager between 16 May and 29 July. No documentation needs to be completed. [See more details](#), including guidance for line managers

Academic Probation Forms updated

View the [recently updated Academic Probation forms](#) for those at grade 7 on a Research & Teaching focussed pathway, bringing them in line with the promotions criteria. [Learn more.](#)



Planning to travel?

1 Email [Catherine Johnstone](#) to get registered as a booker for Key Travel.

2 As a condition for valid [Business Travel insurance](#), Complete Risk Assessment downloaded [here](#) before booking travel. Email to HoD.Psychology@warwick.ac.uk to get HoDs approval.

3 Email [Anita Burrows](#) to raise a purchase order once quote has been obtained from Key Travel (working days Mon/Tues/Thurs).

4 Email [Steve McGladrigan](#) with any queries about the policy.

[Read about the temporary financial regulations in place to ease problems with Key Travel booking implemented 20 April 2022.](#)

KEY TRAVEL - APPROVED BOOKERS

After feedback from departments about the unacceptable wait times being experienced when trying to contact Key Travel by telephone or email, they have implemented a recovery plan which is operational with immediate effect. **The Travel Enquiry Form should not be used until further notice.** This will ensure that calls and emails are picked up and responded to in a much more timely manner by a dedicated Warwick team. Use of the Key Travel portal to make bookings remains the most efficient way to book travel requirements in most cases, but access to a dedicated Warwick support team is a welcome development. The dedicated service team is available on 0161 819 9812 Monday to Friday 08:45-17:30 with 24/7 telephone support via the same number. The new email address is warwick@keytravel.com. Further information can be found on this [website](#).



TRAVEL SURVEY

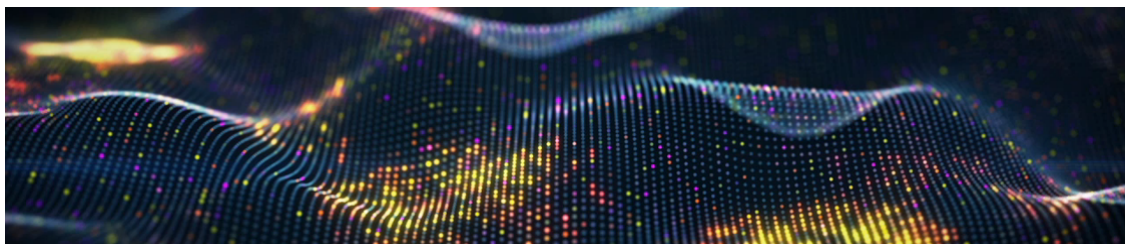
Take 10 minutes to tell us more about how you view your travel options and challenges, to help us continue to improve campus travel and access. Your chance to comment on the recent changes. Closes 15 May.



New: Electric Car salary sacrifice scheme

Take a look at the [Electric Car Salary Sacrifice Scheme](#) to see how it works.

Learn More



Staff Culture: Share your experiences

Don't forget to share your experience of the staff culture and your sense of belonging and inclusion here at Warwick. Your thoughts on what we are doing well, and where we need to make improvements, can help to identify gaps and inform decision-making.

Forum for Leaders of Inclusive Cultures: Disability Inclusion

Join the Forum for Leaders of Inclusive Cultures on 23 May for a special session on Disability Inclusion. A panel of leaders in the region will be discussing their work and how organisations can build truly diverse and inclusive cultures for disabled staff. Find out more and register.

May Holiday Scheme

Bookings are now open for the children's May Holiday Camp between 30 May - 1 June. Find out more information and book now to receive discounted staff prices up until 15 May.



Development Opportunities

[New Warwick Principles and Social Inclusion course](#)

As part of our ongoing commitment to creating an environment where all members of our communities can thrive, we're introducing a new essential [Warwick Principles and Social Inclusion course](#). It will help to ensure that we all have a shared understanding of what we expect of each other as members of the Warwick community. You're asked to complete this around the same time as your PDC.

Development opportunities

Don't forget to explore [development opportunities](#) available at Warwick.

If you're currently at Professor, Reader, or Associate Professor levels, consider [registering your interest in How Warwick Works](#), a shadowing and development scheme for academics to support your leadership development.



[Complete new Fire Safety Training](#)

Find out more about the new [Fire Safety Training module](#) that is to replace previous Fire Safety Awareness, Fire Extinguisher and Fire Warden Moodle training packages. Completion should take approximately 30 minutes and is mandatory for all staff and students.

[Student Visa Compliance Moodle module](#)

Staff working with students or with sponsor obligations relating to sponsored students (including administrative staff in academic departments and professional services and academics who are Personal Tutors) are invited to complete the [Student Visa Compliance Module](#) on Moodle by 23 September

[Online Learning Resources](#)

Wellbeing

[Mental Health Awareness Week: 9-15 May](#)

The theme of national Mental Health Awareness Week is Loneliness. See some of the

[Subscribe](#)[Past Issues](#)[Translate ▼](#)**University of Warwick** @warwickuni · 15h

🧘 It's common for our #sleep to be interrupted, especially during periods of stress. Hear from our Wellbeing Advisor Linda on what you can do to improve your sleep 📺

Sign up to our Steps to Wellbeing programme: warwick.ac.uk/services/wss/

#MentalHealthAwarenessWeek



Managing stress

Share your fun or unusual ways to help reduce stress to be in with a chance of winning a prize this National Stress Awareness month. See the resources available at Warwick and externally to help manage stress levels and avoid burnout.

[Subscribe](#)[Past Issues](#)[Translate](#) ▼

nightline

**A non-judgmental, non-advisory,
confidential, student-run
listening service**

Call: 02476 522199 or
02476 574322

IM:
warwick.nightline.ac.uk/im

Mon-Fri:
9pm-9am

Sat-Sun IM only:
9pm-1am

Drop in at our building on campus:
Free condoms, tampons,
pregnancy tests, ear plugs etc

The graphic features a dark blue background with a white infinity symbol inside a teal head silhouette on the left. Text is presented in white and teal speech bubbles and boxes.

Get 24/7 mental health and wellbeing support

Access [Togetherall](#), a safe place to talk, share and support others like you, available free to all staff and students. It's an anonymous community where you can express how you're feeling, get support and do courses at your own pace

Please reach out for support if you need it, either through your department or the [Employee Assistance Programme](#). You can also access self-help tools through the [Staff Wellbeing Hub](#) and [Wellbeing Support Services](#) (support for students).

Green Matters

Interested in finding more about Sustainability? Join the [Psychology GREEN TEAM](#)

ENVIRONMENTAL SUSTAINABILITY NEWSLETTER FOR APRIL IS [HERE](#).

[Subscribe](#)[Past Issues](#)[Translate](#) ▼

 Learn about [#cycling](#) safety on campus:

PCSOs from [@warkspolice](#) and [@WMPolice](#) will be on campus tomorrow from 2-4pm to discuss concerns you may have if you're cycling in the local area and to explain changes to the Highway Code for cyclists.

 bit.ly/3N45VQy



Commonwealth Games

– what's happening at Warwick

We're helping set the West Midlands stage as our region hosts the Commonwealth Games in 2022. Read on to find out more about Warwick's role and how our facilities will be used by 2,000 world-class, international athletes.

The Birmingham 2022 Commonwealth Games are taking place 28 July - 8 August 2022 in towns and cities across the West Midlands. The Games provide the opportunity to once again showcase the region's ability to thrive in the global spotlight, following hot on the heels of Coventry City of Culture 2021.



[Eurovision 2022 on the big screen](#)

Come along to the Piazza this Saturday at 8pm to watch this year's [Eurovision Song Contest on the big screen](#). Enjoy Eurovision-themed food and drink - dressing up encouraged!

[Subscribe](#)[Past Issues](#)[Translate](#) ▼

celebrate art, nature & the city's communities this Sunday night

bit.ly/Wilderfamily

Watch the full film here youtu.be/GLK37oxFvUA

[#OurWilderFamily](#) bringing our skies to life [#Coventry2021](#)



Then, on Sunday 15 May watch the UK's longest-ever drone show at War Memorial Park. It's like a firework display, but with 100 flying robots. ([Our Wilder Family](#), FREE)



exhibition Prophecy on Saturday.

We were delighted to host our co-curator Laura Nyahuye for her performance of Survival Kit.

Prophecy is open Tuesday - Sunday 11am-8pm, Free Entry.



And finally...

University of Warwick and 2 others liked



Prof Margaret Low @megjlow · 3h

Goose on patrol - now keeping watch from the top of a van @warwickuni @wmgwarwick.



[Subscribe](#)

[Past Issues](#)

[Translate](#) ▼



Copyright (C) *|2022|* *|University of Warwick Psychology Department|*. All rights reserved.

Our mailing address is:
*|c.j.johnstone@warwick.ac.uk|**|*

This email was sent to c.j.johnstone@warwick.ac.uk
[why did I get this?](#) [unsubscribe from this list](#) [update subscription preferences](#)
University of Warwick · Gibbet Hill Road · Coventry, West Midlands CV4 7AL · United Kingdom

Grow your business with  **mailchimp**