

[Subscribe](#)

[Past Issues](#)

[Translate](#) ▼

[View this email in your browser](#)



19 May 2022



Email contents to Catherine Johnstone c.j.johnstone@warwick.ac.uk

Psychology Bulletin

Departmental dates



Want to check key departmental events and dates (including exam boards, away days and graduation)? Check out the Key Dates calendar:

[Calendar](#)

Emergency & Help

Subscribe

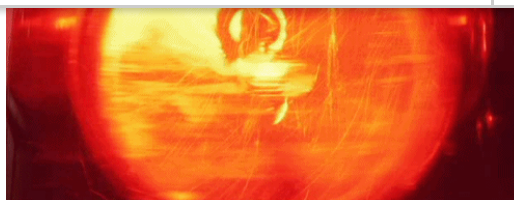
Past Issues

Translate ▼

ambulance) x 22222 or 024765
22222 need to go through
Community Safety.

(save to your MOBILE!)

Learn More



News

Recent student successes

Congratulations to our finalists, Olivia Worringham, Michael Okojie, and Rowchell Green, on their exceptional achievements!



Source: <https://ingenuityimpact.org/2022-national-finalists/>

Olivia Worringham

received the highly commended award for her [2021 ASET Student Competition](#) entry. This award celebrates undergraduate students' placements and internships successes. Olivia's inspirational reflection on her placement year at Cygnet Healthcare demonstrates a fantastic learning and skill development journey.

Learn More

Rochell Green

Rowchell has made it through to the 2022 Ingenuity National Finals. Rowchell is the creator and leader of a collaborative community initiative - The Uniform Project. This initiative "aims to empower those from disadvantaged backgrounds and instil confidence in students. By repurposing uniforms, the project will sustainably equip students with clothing, and reduce the environmental impacts of wastage."

Learn More



Source: <https://www.pallihill.com/pallihill-group-20>

Michael is one of this year’s Pallihill Group’s 20 Student Power List winners. This is a student-led competition that celebrates the impact of students and recent graduates in business, student societies, non-profits and the wider community.

Learn More



COMMUNITY SAFETY



Forgotten your keys/pass? No-one around? Call Community Safety:

Subscribe

Past Issues

Translate

internal extension x22083 or
024 7652 2083

Community Safety

EVENTS



Language and Learning group Seminars

Co-ordinator: [Marta Wesierska](#)

Bi-weekly programme on alternate weeks to Internal Seminar **12:00 Wednesdays**. Details published on Events calendar and TEAMS links circulated in advance of talks to Language and Learning Group members. If interested in joining the mailing list, contact [Marta](#) Wesierska.



See Events

Coming soon:

12: 00 1 June

12:00 15 June

Hirromichi Hagihara

tba



Internal Seminars

Thank you to Suzanne and Jesse for organising such a


programme.

Warwick Turing Fellow Hosted Catch Up Series 2022:

May 26, June 13

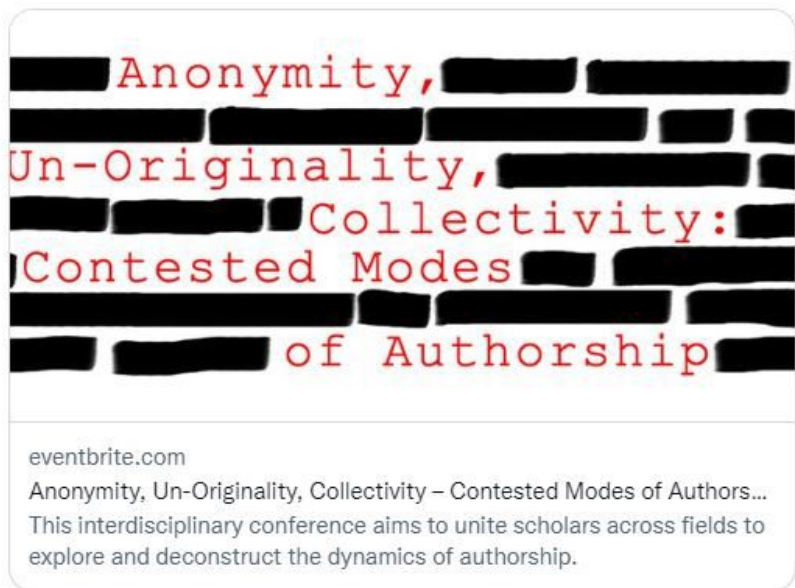
Warwick Data are hosting a series of catchups to showcase the latest developments in data science and artificial intelligence, with talks from Turing Fellows and leading researchers at The Alan Turing Institute. The event is also designed to facilitate connections between Warwick Turing Fellows and the broader University community. For more information, please use this [link](#)

IAS Warwick Retweeted



IAS Conference Contested Modes of Aut... @authorship... · May 10 ...

If you'd still to register the conference in person, we've slightly extended the deadline, so registration closes at midnight to make sure everyone who wants to attend can do so. Online reg will be open until midnight May 20th. Details below:



Anonymity, Un-Originality, Collectivity: Contested Modes of Authorship

This interdisciplinary conference aims to unite scholars across fields to explore and deconstruct the dynamics of authorship.

This interdisciplinary conference is a hybrid event, hosted by the Institute of Advanced Study, University of Warwick, UK, May 20-21, 2022.

Learn More

Postdocs and Postgraduates



Planning to travel (staff and PGRs)?

Read [HR checklist for travel](#) noting restrictions on the type of accommodation that can be booked and through who ([KEY TRAVEL ADVISED](#)). Note requirement for Fin Regs approval via Steve McGladrigan **IN ADVANCE** of booking any non-standard accommodation:

- If you are booking accommodation that is being made available or is approved by the Institution / University being visited as the purpose of the business trip additional FinRegs approval is not required.
- Accommodation should be booked either direct with hotels or by using a reputable accommodation supplier with flexible cancellation policies and clarity on the H&S standards imposed. The University does **NOT** recommend using AirBnB properties – approval from FinRegs and Health & Safety must be sought if AirBnB is being considered, and there are additional procedures and checklists that must be followed.

1 Read the Overseas Business travel Insurance Policy:

<https://warwick.ac.uk/services/finance/insurance/keypolicies/traveloverseas/>

2 Email [Catherine Johnstone](#) to get registered as a booker for Key Travel being mindful of the temporary financial regulations relating to Key Travel here: [Read about the temporary financial regulations in place to ease problems with Key Travel booking implemented 20 April 2022.](#)

3 Complete Risk Assessment before booking travel to comply with business insurance requirements - DOWNLOAD from this page:

https://warwick.ac.uk/services/healthsafetywellbeing/guidance/travel_health

[Subscribe](#)[Past Issues](#)[Translate](#) ▼

4 Email [Anita Burrows](#) to raise a purchase order once quote has been obtained from Key Travel (working days Mon/Tues/Thurs).

5 Email [Steve McGladrigan](#) with any queries about what expenditure can be reclaimed BEFORE making any bookings.

CONFERENCE BOOKING GUIDANCE - Fin Regs

- Conference bookings (fees) do not require FinRegs approval
- If accommodation is included as part of the conference package, FinRegs approval is not required
- If preferential rates are offered for conference attendees at the conference hotel or a nearby hotel, this can also be booked without FinRegs approval
- If the conference is outside of Europe, or in Europe and travel costs will be more than £500, flights should be booked through Key Travel, per the University policy

All other FP16 and Travel Policy requirements apply, including the requirement for any staff and PGR students intending to undertake overseas business-related travel to seek departmental budget approval, complete a risk assessment and ensure that appropriate travel insurance is in place.

Also, as a reminder, the University does NOT recommend using AirBnB properties for accommodation bookings – approval from FinRegs and Health & Safety must be sought if AirBnB is being considered, and there are additional procedures and checklists that must be followed.



IAS Warwick @IASWarwick · 41m

...

The #IASAccolade Academic Careers and Leadership Development Programme is back for another term 🎉

warwick.ac.uk/accolade

If you're a postdoc @Warwick_Science @ArtsWarwick @Warwick_SocSci

join us as a Fellow to take part: warwick.ac.uk/fac/cross_fac/... #ecr

#postdoc #training #support



**PGR workshop:
Preparing for
interviews**

[Subscribe](#)[Past Issues](#)[Translate ▼](#)

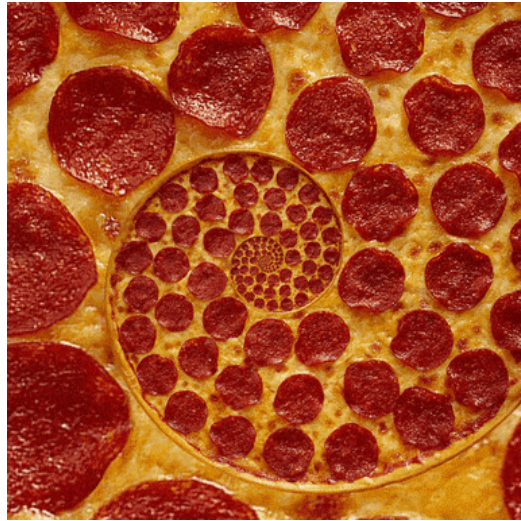
We will cover both general principles of how to give a good interview as well as specific issues that are likely to come up in academic job interviews. The session aims to be useful not only for people applying for academic jobs, but for all jobseekers likely to encounter an interview in the future.

[Sign up](#)

PGR Social

Tuesday 7 June: 17:30 Varsity

Suzanne Aussems and Sam Johnson will host a social event for PGRs - all welcome!

[Learn More](#)


News form the Teaching Cafe for PGRs who teach:

Upcoming online workshop - embedding values within our teaching practices Hello Teaching Café Just to let you know that you are warmly invited to this upcoming online workshop. This will be a great opportunity to gain some practical support for embedding values within our teaching practices, and take part in piloting some toolkit activities. We hope to see you there! Embedding values within our teaching and supporting learning practices: introducing a toolkit

Tuesday 24th May 2022, 12pm - 1pm - Dr Jane Bryan (MS Teams)

This workshop will consider how to embed teaching about values into University education. Discussion will focus upon what ethical values are appropriate to introduce into our teaching and methods for teaching them. A toolkit with suggested activities will be introduced and reviewed in the session. An invitation will also be extended to any colleagues who may be interested in piloting and testing one or two activities with their students as a form of pedagogic research. Support for this piloting will be available and we will explore this further in the workshop.

Book your place [via this link](#).

The Primals Project at Penn's Positive Psychology Center is delighted to announce the **Primals Research Student Awards** for PhD students and postdoc trainees only. Grants of up to \$20,000 will be awarded for the empirical study of primals—also called “primal world beliefs.” Primals are basic perceptions of the world's general character. A foundational taxonomic effort recently

[Subscribe](#)
[Past Issues](#)
[Translate](#) ▼

variation is explained by three higher-order primals: the beliefs the world is *Care* (vs. dangerous), *Enticing* (vs. dull), and *Alive* (vs. mechanistic). These awards are intended to encourage original research into the origins and psychological impact of any of the 26 primals. **2-page submissions due May 27, 2022** ([details online](#)).

Rive Cadwallader Primals Project

Positive Psychology Center University of Pennsylvania



Research Exchange @ResearchEx · 2h

Last networking event was a huge success. We are now organising another networking event for PGR students! Grasp this opportunity to make the most out of this Term 3!

Link to sign-up for the event:

warwick.ac.uk/services/libra...



inVISIBLE Research & Diversity Conference

The Warwick Black Chemistry Society (WBCS) in collaboration with the Institute of Advanced Study (IAS) would like to ***invite you to attend and/or present at the inVISIBLE Research & Diversity Conference*** at the ***Zeeman Building***. The conference is part of an Equality, Diversity & Inclusion project (***inVISIBLE***) aimed at promoting the visibility of ethnic minorities in academia.

Registration to attend and/or present is available ***here*** and is open till ***31/05/2022***.

We look forward to seeing you there and for any further questions, please visit: ***go.warwick.ac.uk/invisible_conference*** or contact ***wbcs@warwick.ac.uk***

[Subscribe](#)[Past Issues](#)[Translate](#) ▼

Networking Fund EXTENSION — Postgraduate researchers now have until 23 May to submit their applications to our networking fund to receive up to £300 to fund educational, supportive, and creative networking events.

Find out more and apply here: bit.ly/3xW6TKg



Warwick Doctoral College @DC_Warwick · Apr 26

...

There is still time to submit your entry into this years 3MT competition. Can you present your PhD thesis in just 3 Minutes? The winner will be entered into the regional final!

Don't forget – Entries must be submitted by 20 May.

Apply here: bit.ly/3JtyAML

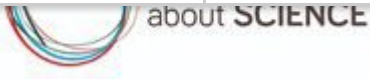


[Nominate a researcher for the 2022 John Maddox Prize](#)

Subscribe

Past Issues

Translate ▼



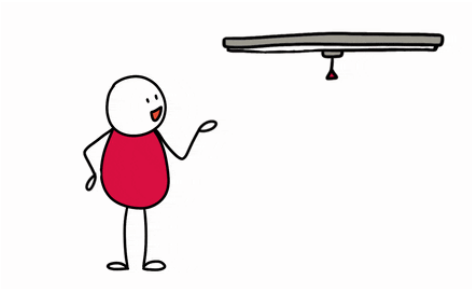
share the [nomination form](#) with your networks. If you have any questions or would like to informally discuss the criteria, please get in touch with me at johnmaddoxprize@senseaboutscience.org.

Deadline 16:00 30 May

Learn More

Participate in research:

Student learning and student experience



PGRs - take part in a survey conducted by the Psychology departments at the University of Warwick and Birmingham City University to gather information about BAME students' learning and student experiences. All psychology students at the department can complete the survey regardless of their ethnicity.

Survey link

TEACHING

Reading lists

Reading Lists Rollover for 2022/23

The Library has now rolled over all published 2021/22 reading lists and

[Subscribe](#)[Past Issues](#)[Translate](#) ▼

academic year, please ensure all lists are published and any changes made by 31 July. [See more information.](#)

Open call for WIHEA Fellowship

The call for Warwick International Higher Education Academy Fellowship nominations is now open, providing an outstanding opportunity to engage with colleagues and students and develop new academic practices that will enhance the student experience. [Find out more and apply](#) by 15 June.

Bookable Moodle Support Sessions

The Digital Learning Environment (DLE) team is now offering a series of bookable one-to-one **Moodle Support Sessions**. These are intended to be short appointments to discuss users' needs and requirements so that we can advise on appropriate tools in Moodle for the activity they want to create. These sessions are not for reporting errors or issues which should still be submitted via the Help Desk. Appointments are available in the first instance between 11am and 1pm on Tuesdays, 1pm and 3pm on Thursdays and 10am and 12pm on Fridays. [Sign up to appointments with DLE staff via MS Bookings](#)



Warwick Celebrates

Class of 2020 and 2021

Warwick Celebrates

Psychology Postgraduates, including DClin

15:00 - 17:00 Sunday 10 July 2022

Psychology Undergraduates

15:00 - 17:00 Tuesday 12 July 2022



Degree Congregation: July 2022

Psychology 2022 UG Graduation

11:00 - 13:00 Tuesday 26 July 2022

[Learn More](#)

News for your students:

External R teaching event: Teaching Statistics with R in Psychology: Online symposium, 23 June.

On 23 June, we will be hosting an online symposium about teaching statistics in psychology using R. There will be talks from representatives of Lancaster University, Nottingham Trent University, University of Glasgow, the University of Plymouth, and the University of Sussex. The symposium is free and open to all. See the following webpage for details, schedule, and the registration form.

<https://www.ntu.ac.uk/about-us/events/events/2022/6/teaching-statistics-with-r-in-psychology>

News for your students

Careers Advice for students:

Siobhan Qadir, Careers Adviser

Subscribe

Past Issues

Translate ▼

They'll be on campus to meet you and chat about roles and opportunities. Look out for our fair guide dropping soon. [#MySummerNetworking](#) [#GetHired](#) ow.ly/6F8x50J3leg



RESEARCH AND IMPACT



Dieter's impact case featured as part of the Warwick #REF2021 story

Subscribe

Past Issues

Translate



Find out more about Psychology's Impact work here

[Psychology Impact Cases](#)



The Lifelong Effects of Premature Birth

Changing policy worldwide to support the development of preterm babies



Maximising the Value of Witness Evidence

Confronting the unreliability of the human memory



Improving Road Safety Education and Driver Training

Raising awareness of the need to pay attention on the road

See the latest research being carried out within our research groups here:



Applying the core principles of cognitive psychology, we explore how people come to make the important decisions in their everyday lives.



Health and wellbeing across the lifespan, with an emphasis on translating research into clinical practice and health policy.



Cognitive factors involved in the successful mastery of language and learning, and applying the language research to the classroom.

[Subscribe](#)[Past Issues](#)[Translate](#) ▼

Keep an eye out in the Library for the new #REF2021 Collection where you will be able to see all the books submitted to the REF by @warwickuni researchers - featuring all the exciting volumes pictured here!



Don't forget

Inform **Research Impact Services (RIS)** if you are planning to submit a grant.



You can do so by contacting [Andrea Howard](#) directly. Alternatively, if it is for a grant that would bring more than £50k to Psychology, you can register your plans at the department site as these submissions are also sent to RIS.

[Register Grants here](#)

Sustainable Cities Research and Networking

Join a Community Networking Event on 27 May to meet other researchers across the University and find out more about how the Sustainable Cities GRP network can support you in your research career development.



Relaunch of International funds

Global opportunities

The [International Partnership Fund \(IPF\)](#) aims to strengthen or initiate exchange between Warwick academics and their counterparts from leading international universities or institutes. We especially welcome proposals with partners in our priority regions (Africa, China, Europe & North America).

Applications are made through an [online application form](#). The deadline for applications is **Sunday 10th July 2022**.

Strategic partnership opportunities

To complement our IPF scheme, we also have specific funds to encourage collaboration with most of our strategic partners. These grants are jointly evaluated and funded with our partners:

- The [SJTU-Warwick Joint Seed Fund](#) enables academics to work on projects jointly with colleagues from Shanghai Jiao Tong University (SJTU), China and provides funding for projects lasting up to 12 months. Warwick academics can request 5,000 GBP from Warwick and SJTU academics can request 50,000 RMB from SJTU.

The deadline for this call is **Sunday 10th July 2022**. All funding for successful awards must be defrayed by 31st July 2023.

- The [Monash Warwick Alliance](#) offers several funding schemes to encourage research, teaching, and professional staff, as well as students, to collaborate with their counterparts in Monash, Australia. These schemes have recently been reactivated and are now open.
- The [EUTOPIA Connected Research Communities](#) and the [Research Mobility Program](#) will allow you to establish links with colleagues in Vrije Universiteit Brussel, CY Cergy Paris University, University of Gothenburg, University of Ljubljana, Pompeu-Fabra University-Barcelona. The aims are to: support research visits across EUTOPIA partner universities, foster research collaborations, allow the

The EUTOPIA Connected Research Communities call closes on **Friday 10th June 2022**. Use this space to add more details about your brand, a customer quote, or to talk about important news.

[Learn More](#)

IMPACT

The Pro Vice Chancellor Research, Professor Caroline Meyer, on 5 April announced five new institutional funds totalling £2.8million, to drive the development of Warwick's research impact over the next three years.

Researchers will be able to apply for grants of between £3,000 and £50,000 for projects which create societal and economic impact from their findings.

New funding will be available to support researchers working in the areas of Engineering and Physical Sciences, Medical Sciences, Space Science, Biosciences, Arts and Humanities. The new funds will complement an existing [Impact Acceleration Account from ESRC](#) for the Social Sciences and a [Warwick Wellcome Trust Translational Partnership](#), which is driving the translation of research into improvements in human health.

The new awards include a £1.8m EPSRC Impact Acceleration Account, a £414K MRC IAA Confidence in Concept Award, and an additional £70K funding from STFC. UKRI have requested that we do not publicise our IAA awards externally at the current time, but internal calls can be launched shortly. We therefore ask that this communication is not shared beyond Warwick.

In addition to the UKRI awards, Professor Meyer has allocated funding to support a Biosciences Impact Fund and an Arts and Humanities Impact Fund. Both will run for three years beginning April. In addition, the University will extend our STFC Award for a further two years. Together the three funds represent a total University investment of £584,000.

For further information, please contact the relevant fund managers below:

- EPSRC IAA: [Grace Prewett](#)
- MRC IAA: [Kevin Marks](#)
- STFC and Space Science Funds: [Grace Prewett](#)
- Biosciences Impact Fund: Dr [Josh Cartwright](#)
- Arts and Humanities Impact Fund: [Emma Roberts](#)
- ESRC IAA: [Carolyn Silvester](#) and Dr [Helen Ackers](#)
- Warwick Wellcome Trust Translational Partnership: [Josh Cartwright](#)

EPSRC IAA 2022-25

Call deadline: **23 May**

The EPSRC Impact Acceleration Account (IAA) supports a range of activities to maximise impact from EPSRC funding or research within the EPSRC remit. Funding Opportunities Available:

Institutional Pump Priming

[Subscribe](#)[Past Issues](#)[Translate](#) ▼

undertake small impact projects which encourage engagement and facilitate collaborations with end users of research.

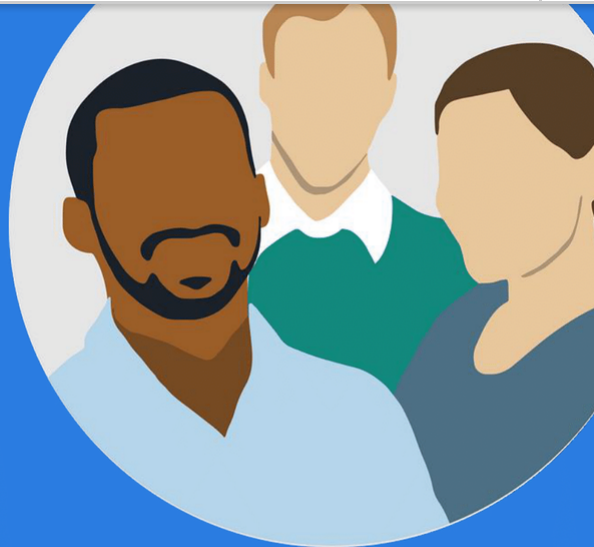
Secondment/Exchange Scheme Funding is available for 'mini-KTP' secondments which will facilitate knowledge transfer from the university to collaborators (a business or other organisation). This award will give researchers the chance to trial projects and collaborations that are too early for a KTP (Knowledge Transfer Partnership), but may lead to a KTP application in future.

All further details and eligible costs can be found on the [EPSRC IAA 2022-25](#) website

Contact: grace.prewett@warwick.ac.uk

Call for participants

Do you have chronic pain?



Volunteers are needed to take part in psychological research which aims to help explain distress & disability in chronic pain.

You may qualify if you:

- Suffer from chronic pain
- Are aged 18 & over
- Are English-speaking

Visit our webpage for more information and how to take part:

<https://warwick.ac.uk/fac/sci/psych/research/lifespan/sleeplab/projects/within>

Contact us:

WITHIN Study
Warwick Sleep & Pain Lab
Withinstudy@warwick.ac.uk
Tel: 07385600421

To take part, read our information leaflet and complete the short screening-questionnaire or get in touch with us!



Participant Recruitment Poster (v2.1d) (IRAS Number: 223190) 13/03/20



Remember to tell your line-manager and record coronavirus absence in SuccessFactors if you have tested positive and cannot work.

Personal Development Conversations

[Subscribe](#)[Past Issues](#)[Translate](#) ▼

This year, the Personal Development Review (PDR) process will take place in the form of a Personal Development Conversation (PDC). More information for staff on how the process will be run in Psychology coming by email soon.

Personal Development Conversations coming soon

Your Personal Development Conversation will be an important opportunity to recognise achievements, review development, look forward together, identify development opportunities and discuss career aspirations and wellbeing. You'll need to have this conversation with your line manager by 29 July. No documentation needs to be completed. [See more details](#), including guidance for line managers. You will be emailed details early next week.

The University are holding **Strategy Summits** on [24 May for FA8 and FA9 colleagues](#) and on [26 May for all staff](#), to hear about progress already made towards refreshing the University Strategy and our emerging direction for the future. Those attending will also be invited to help develop new behavioural values, at follow up workshops.

If you haven't already, do sign up to take part.

Pensions automatic re-enrolment exercise: June 2022

Every three years, any individuals who are not currently saving for a pension and who meet certain eligibility criteria must by law be re-enrolled automatically into a pension scheme by their employer. If you are not already in a pension scheme, [please find out how this affects you](#) before our next automatic re-enrolment exercise in June.

Summer celebrations at Warwick



It's a summer of celebrations on campus!

This summer we have a spectacular line up of celebrations happening on campus. There will be our traditional Degree Congregations and Warwick Celebrates events (for those who graduated in absentia in 2020 and 2021). We'll also be taking part in the Birmingham 2022 Commonwealth Games, providing an Athletes village, and co-hosting the International Children's Games.

These events will have an impact on all staff, students and visitors to our campus. Read on to find out what it means for staff. Due to the scale of activity, we have created this hub to keep everyone informed and we will be updating it regularly.

Take a look at [summer celebrations coming up and what you need to know about the impact on campus](#), including on parking.

[Subscribe](#)[Past Issues](#)[Translate](#) ▼

1 Email [Catherine Johnstone](#) to get registered as a booker for Key Travel.

2 As a condition for valid [Business Travel insurance](#), Complete Risk Assessment downloaded [here](#) before booking travel. Email to HoD.Psychology@warwick.ac.uk to get HoDs approval.

3 Email [Anita Burrows](#) to raise a purchase order once quote has been obtained from Key Travel (working days Mon/Tues/Thurs).

4 Email [Steve McGladrigan](#) with any queries about the policy.

[Read about the temporary financial regulations in place to ease problems with Key Travel booking implemented 20 April 2022.](#)

Travel Business Insurance

KEY TRAVEL - APPROVED BOOKERS

*After feedback from departments about the unacceptable wait times being experienced when trying to contact Key Travel by telephone or email, they have implemented a recovery plan which is operational with immediate effect. **The Travel Enquiry Form should not be used until further notice.** This will ensure that calls and emails are picked up and responded to in a much more timely manner by a dedicated Warwick team. Use of the Key Travel portal to make bookings remains the most efficient way to book travel requirements in most cases, but access to a dedicated Warwick support team is a welcome development. The dedicated service team is available on 0161 819 9812 Monday to Friday 08:45-17:30 with 24/7 telephone support via the same number. The new email address is warwick@keytravel.com. Further information can be found on this [website](#).*



New: Electric Car salary sacrifice scheme

[Subscribe](#)

[Past Issues](#)

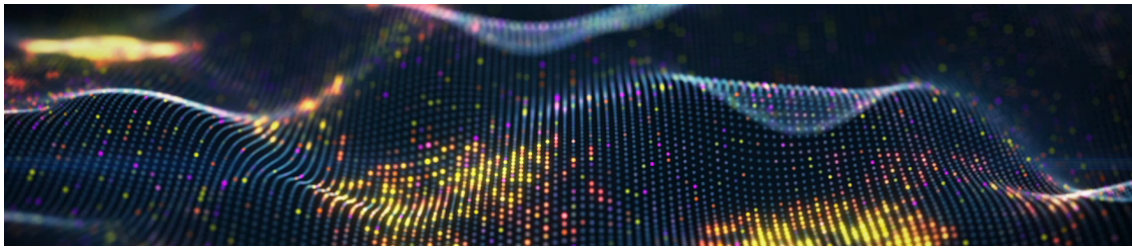
[Translate](#) ▼



IT WORKS.

[Learn More](#)

ED&I news



University Race Equality Charter award



The University have been awarded the Race Equality Charter Bronze award, which is an independent recognition of our commitment to working towards race equality. We spoke to some of those involved in our submission [about the award and the work we still have to do.](#)

[Learn More](#)



[Staff Culture: Share your experiences](#)

well, and where we need to make improvements, can help to identify gaps and inform decision-making. Closes 20 May!

Forum for Leaders of Inclusive Cultures: Disability Inclusion

Join the Forum for Leaders of Inclusive Cultures on 23 May for a special session on Disability Inclusion. A panel of leaders in the region will be discussing their work and how organisations can build truly diverse and inclusive cultures for disabled staff. [Find out more and register.](#)

May Holiday Scheme

Bookings are now open for the children's May Holiday Camp between 30 May - 1 June. [Find out more information and book now](#) to receive discounted staff prices up until 15 May.

Development Opportunities

New Warwick Principles and Social Inclusion course

As part of our ongoing commitment to creating an environment where all members of our communities can thrive, we're introducing a new essential [Warwick Principles and Social Inclusion course](#). It will help to ensure that we all have a shared understanding of what we expect of each other as members of the Warwick community. You're asked to complete this around the same time as your PDC.

Development opportunities

Don't forget to explore [development opportunities](#) available at Warwick.

If you're currently at Professor, Reader, or Associate Professor levels, consider [registering your interest in How Warwick Works](#), a shadowing and development scheme for academics to support your leadership development.



Complete new Fire Safety Training

Find out more about the new [Fire Safety Training module](#) that is to replace previous Fire Safety Awareness, Fire Extinguisher and Fire Warden Moodle training packages. Completion should take approximately 30 minutes and is mandatory for all staff and students.

Student Visa Compliance Moodle module

[Subscribe](#)[Past Issues](#)[Translate](#) ▼

academics who are Personal Tutors) are invited to complete the [Student Visa Compliance Module](#) on Moodle by 23 September

[Online Learning Resources](#)

Wellbeing

[Wellbeing: National Walking Month](#)

May is National Walking Month, so why not explore the [different walking routes here at Warwick](#) and explore the [Living Streets website](#) for easy walking tips and inspiring stories.



Warwick Sport @warwicksport · 6h

Lets get moving with our Rock Up and Play sessions 🏋️

We have both community sessions and @warwickuni staff and student sessions. bit.ly/3w60zid



[Managing stress](#)

Share your fun or unusual ways to help [reduce stress](#) to be in with a chance of winning a prize this National Stress Awareness month. See the resources available at Warwick and externally to help manage stress levels and avoid burnout.

[Subscribe](#)[Past Issues](#)[Translate](#) ▼


nightline

A non-judgmental, non-advisory, confidential, student-run listening service

Call: 02476 522199 or 02476 574322

IM: warwick.nightline.ac.uk/im

Mon-Fri: 9pm-9am

Sat-Sun IM only: 9pm-1am

Drop in at our building on campus:
Free condoms, tampons, pregnancy tests, ear plugs etc

Get 24/7 mental health and wellbeing support

Access [Togetherall](#), a safe place to talk, share and support others like you, available free to all staff and students. It's an anonymous community where you can express how you're feeling, get support and do courses at your own pace

Please reach out for support if you need it, either through your department or the [Employee Assistance Programme](#). You can also access self-help tools through the [Staff Wellbeing Hub](#) and [Wellbeing Support Services](#) (support for students).

Green Matters

Interested in finding more about Sustainability? Join the [Psychology GREEN TEAM](#)

ENVIRONMENTAL SUSTAINABILITY NEWSLETTER FOR APRIL IS [HERE](#).

Commonwealth Games

– what's happening at Warwick

We're helping set the West Midlands stage as our region hosts the Commonwealth Games in 2022. Read on to find out more about Warwick's role and how our facilities will be used by 2,000 world-class, international athletes.

The Birmingham 2022 Commonwealth Games are taking place 28 July - 8 August 2022 in towns and cities across the West Midlands. The Games provide the opportunity to once again showcase

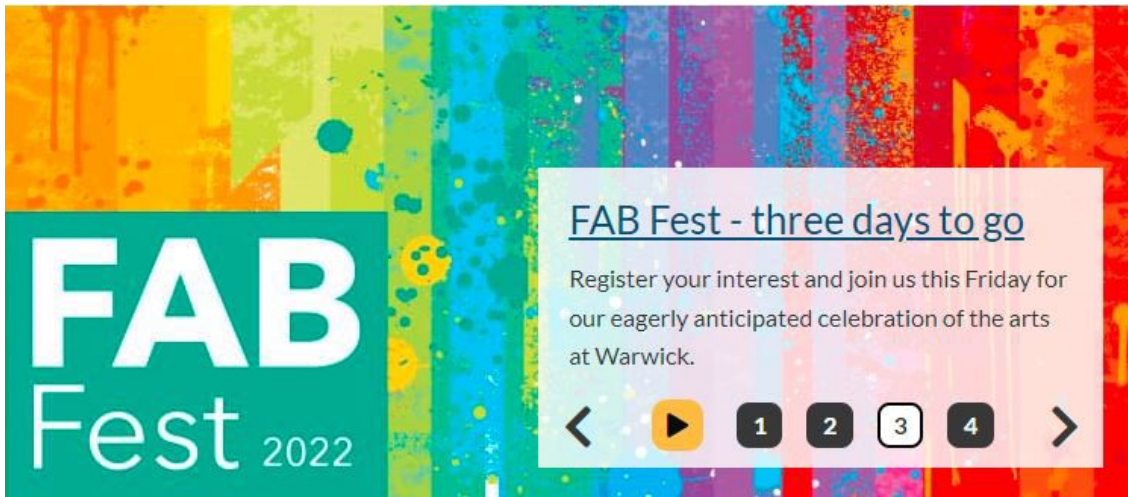
[Subscribe](#)

[Past Issues](#)

[Translate](#) ▼




Friday 20 May 12:00 - 17:00



**FAB
Fest 2022**

[FAB Fest - three days to go](#)

Register your interest and join us this Friday for our eagerly anticipated celebration of the arts at Warwick.

<  1 2 3 4 >

Subscribe

Past Issues

Translate ▼



WILDLIFE GATHERING HAVE FUN IN NATURE THIS WEEKEND

FRI 20 - SUN 22 MAY
ACROSS COVENTRY



And finally...

Subscribe

Past Issues

Translate



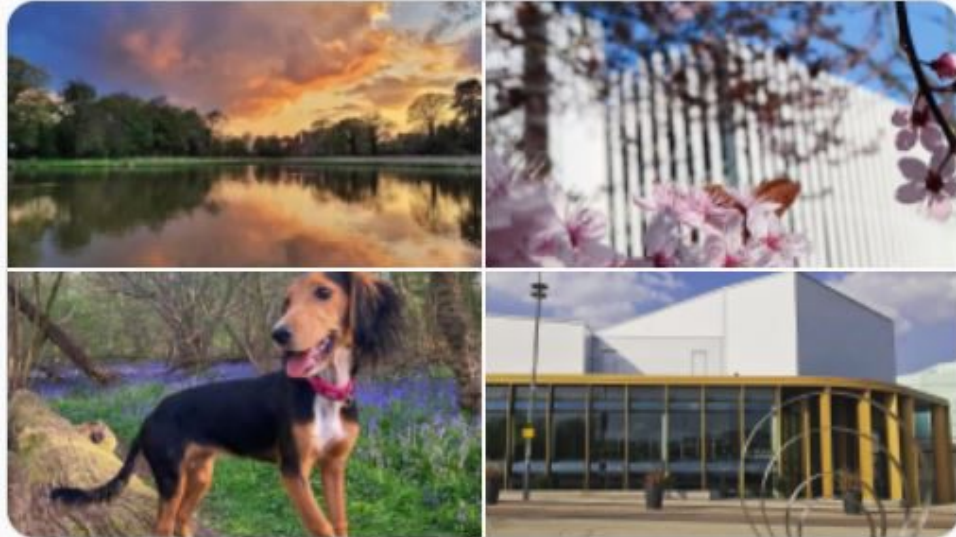
A big thank you to everyone who's participated in #WarwickSpring so far!



Remember to post or message your photos and videos by this Sunday (15 May, midnight).

warwick.ac.uk/warwick_presen...

@travellingwomey, alyssaali_li, nature_blessing & taoboat (Instagram)



Copyright (C) 2022 University of Warwick Psychology Department. All rights reserved.

Our mailing address is:
c.j.johnstone@warwick.ac.uk