

[Subscribe](#)

[Past Issues](#)

[Translate](#) ▼

[View this email in your browser](#)



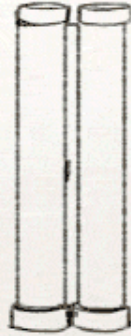
1 July 2022



Psychology Bulletin

[Email content to Catherine Johnstone](#)

[NEWS](#)



To:

Gemma Gray

Department of Psychology



Gemma on winning Warwick Award for Personal Tutoring Excellence!

“Gemma was recognised for her welcoming and inclusive approach to personal tutoring. She engages with tutees pre-arrival through a Padlet, introducing herself and encouraging students to do the same, an approach which she has shared with other personal tutors in her department. She encourages tutees to be honest about areas they find difficult and has

[Subscribe](#)[Past Issues](#)[Translate ▼](#)

to support, essay writing and general academic skills advice.

Through her work on supporting disabled students, Gemma adopts a person-centred approach, appreciating the individual impact that a disability can have, and providing reassurance and guidance on approaching academic work with this in mind. Her experienced supporting students has led to an IATL funded project exploring the experiences of students with Long Covid and/or Chronic illness, with the view to creating supportive resources, both for students and their personal tutors.”

[Learn More](#)

Jagjeet Jutley-Neilson

for being part of the Commended Collaborative Awards “Tackling Racial Inequality at Warwick (TRIW)” team. Read more [here](#).

Sotaro Kita

for being Commended in the Warwick Awards for Teaching Excellence SEM Faculty Awards. Read about the nomination [here](#).



ESRC DTP PhD fellowship

Supervised by [Professor Kim Wade](#) there is a fellowship available investigating Legal Decision-Making, Witness Evidence, and Credibility Assessments in Refugee Status Determinations



Thank you!

To all those involved in marking, processing marks, exam boards, mit

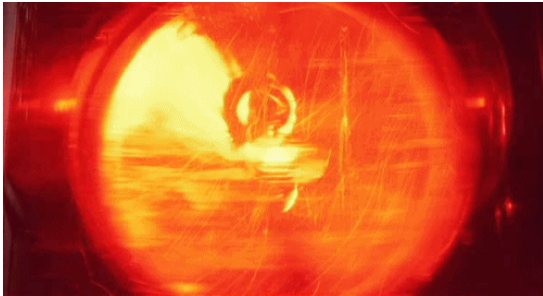
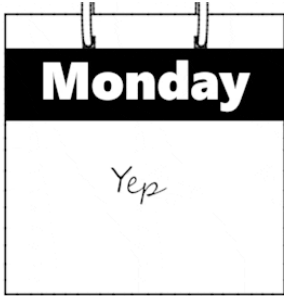
Subscribe

Past Issues

Translate ▼

Apply here

INFORMATION



Departmental dates

Emergency & Help

Want to check key departmental events and dates (including exam boards, away days and graduation)? Check out the Key Dates calendar:

All Emergency calls on campus (fire, police, ambulance) x **22222** or **02476 52222** need to go through Community Safety.

Key dates

(save to your MOBILE!)

Learn More

Forgotten your keys/pass? No-one around? Call Community Safety:

24-hour Control Centre (general enquiries) internal extension x22083 or 024 7652 2083

Community Safety

Changes to the way we log-in

We're replacing our Web Sign-On with Microsoft's Multi-Factor Authentication (MFA) - which will improve our security and user-experience. This will mean a change to the way we log-in to University applications - [find out more about what this means for you](#)

Summer celebrations - changes on campus

[Subscribe](#)[Past Issues](#)[Translate](#) ▼

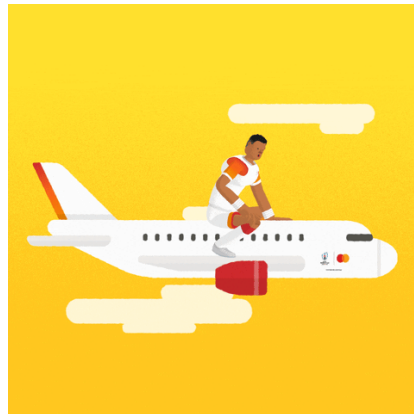
next phase begins Sunday 26 June with the installation along a section of Gibbet Hill Road on Cryfield Village Campus. The Health Centre will move to Westwood Campus from 14 July until mid-August. [Learn more about the changes](#) affecting some areas of campus, alternative cycle and walking paths, and changes to the location of the PG HUB and Amazon lockers. [See the timeline for more information](#) on activities occurring on campus.

With a host of [celebrations taking place across campus](#), we'll be reminding staff where possible, and with the agreement of their line manager, to consider working from home from 4 July to 31 July.

For those planning to continue working on campus, here is the [summer parking arrangements and closure information](#) to help you plan journeys.

Umbrella Security Protection

Umbrella [Security Protection](#) is available as additional protection for all devices, whether working on campus or from home. Find out what this means for you and the University.



Planning to travel?

See also information from Finance on recommended Travel Apps circulated 6-6-22 by email from HoD.Psychology@warwick.ac.uk in response to flight delay and travel situation.

Funding travel:

Academic Staff: Discretionary account spend >£500 must be approved by HoD (can be done via hod.psychology@warwick.ac.uk by email when Risk Assessment submitted).

NEW Risk Assessment. To ensure valid Business Insurance complete the NEW [Risk Assessment form](#) prior to booking travel and get signed off by emailing to hod.psychology@warwick.ac.uk

Travel bookings: >£500 and/or outside Europe must be booked through Key Travel (email Catherine c.j.johnstone@warwick.ac.uk with mobile phone number to get set up as a Key travel Booker) and advised for travel <£500 so assistance available if any cancellations/delays.

Purchase Order for travel bookings through Key Travel – request from Anita

Subscribe

Past Issues

Translate ▼

get your supervisor to email permission for booking, which you should include when you request a purchase order.

covering Anita's leave: Catherine c.j.johnstone@warwick.ac.uk

CONFERENCE Guidance:

- Conference bookings (fees) do not require FinRegs approval
- If accommodation is included as part of the conference package, FinRegs approval is not required
- If preferential rates are offered for conference attendees at the conference hotel or a nearby hotel, this can also be booked without FinRegs approval

Accommodation: Ensure compliance with **Fin Regs 16 – Travel, Subsistence, Gifts and Hospitality** to ensure you can reclaim expenses (Air B&B not allowed unless there is a special case for applying for Fin Regs approval from Fin Regs Champion, Steve McGladrigan s.mcgladrigan@warwick.ac.uk)

The University does NOT recommend using AirBnB properties for accommodation bookings – approval from FinRegs and Health & Safety must be sought if AirBnB is being considered, and there are additional procedures and checklists that must be followed.

Friederike's Coffee and Catchup c 10:30 Link via email - All Welcome!





GRP Conference on AI and Digital Technologies in the Workplace

8 July 2022

The conference will bring together PhD researchers from within and outside the University of Warwick to foster discussion and dissemination of research on the interaction of wellbeing in workplaces, digitalisation, and an extended use of artificial intelligence. The submissions are welcome from PhD researchers at any stages of their PhDs. ***Extended abstracts, chapters of thesis, working draft and research proposals related to the themes of the conference are all welcome.***

The conference will take place in-person at Warwick and we are happy to cover travel expenses for those that wish to travel to Warwick University by bus or train. (no registration fee).

[Learn More](#)



Staff Welcome back event

Saturday 16 July

It's now less than one month until our Staff Welcome Back event on Saturday 16 July.

[Subscribe](#)[Past Issues](#)[Translate](#) ▼[your family now!](#)

A heads up that UG student **Inca Hide-Wright** (SSLC Secretary) will be awarded an OSCA at Graduation in the 2022 Outstanding Student Contribution Awards (OSCAs).

Warwick Celebrates

[Psychology Postgraduates, including DClin](#)

15:00 - 17:00 Sunday 10 July 2022

[Psychology Undergraduates](#)

15:00 - 17:00 Tuesday 12 July 2022

Psychology 2022 Degree Congregation:

11:00 - 13:00 Tuesday 26 July 2022



RAWKUS

Rawkus collection is taking place on the 2nd and 3rd of July this year! As students move out of halls at the end of term 3, tonnes of unwanted food and kitchen equipment is left behind. Rawkus volunteers come together to collect any food that is in-date and edible and any unwanted items, that would otherwise be binned and end up in landfill. The food and goods collected are then distributed to local charities in Coventry and Leamington,

Litterpick

12:00 Wednesday 13 July

We are running a litterpick on campus, for any staff and students to get involved with, on the 13th July, starting at 12noon! This will be around an hour long - bags, gloves and pickers will be provided, but if you have your own please feel free to bring them. Not only does litterpicking keep our campus clean and safe for wildlife and people, it also provides the opportunity for you to meet likeminded people! [Sign up here.](#)

Wellesbourne

**a campus for research
excellence in Food and
Environmental Science**

Thursday 21 July

Join us for a guided walk on Thursday 21 July and delve into the TRIALS and tribulations of growing food for the future...

- Visit field trials and specialist outdoor research facilities within the SLS footprint.
- Visit areas of interest for further studies, including biodiversity (e.g. wildflower strips, tree sparrow boxes, hedge planting, bees, low maintenance areas).
- Explore opportunities for future teaching, student projects and cross collaborations.

Each guided walk is approximately 1.5 hours, followed by posters and the opportunity to mingle with our researchers whilst enjoying some vegetable snacks. Return transport from Gibbet Hill campus available.

[Register now to secure your place](#)

Postdocs and Postgraduates

The call is out for PGR SSLC (Staff Student Liaison Committee) representatives for 2022/23. Contact [Agne Raneberg](#) or [Zhihong Huang](#) or talk to you supervisor for more details.



Global Young Scientists Summit (GYSS) 2023

Date: 17 – 20 January 2023

Time: 0800h-1800h (Singapore time)

Venue: Singapore (tentatively at Matrix at Biopolis), with an Online segment

Warwick has been invited to submit nominations for PhD students/early career researchers within STEM disciplines to participate in the Singapore government-funded Global Young Scientists Summit 2023. Please see the email from Tom Freeman circulated 23/6/22 for more details.

The department will hold an internal selection round to determine the best 3 candidates to put forward to the next selection stage. Warwick's final nomination list to GYSS will then be determined by a panel comprised of: 1) a nominee of the Vice-Provost and Chair of Faculty for Science, Engineering and Medicine, Prof. Lorenzo Frigerio, and; 2) the Academic Director, Doctoral College, Prof. Dan Branch.

Deadlines for nominations: 12:00 29 July.



Warwick Postgraduate Teaching Community @WarwickPTC · 1h ...

📌 Send us your abstracts 📌 for the Warwick Journal of Postgraduate Pedagogic Practice - we've extended the deadline to Friday 8th July and would love to hear your article ideas warwick.ac.uk/fac/cross_fac/...

summer walk from campus to Kenilworth. This is a great opportunity to meet your peers and get to know the area, and we're looking forward to seeing you there.

More info and sign-up here: bit.ly/3xFiv2x



Warwick Doctoral College @DC_Warwick · 21h

Join us on 11 July for a PGR Matters session to learn more about Warwick Enterprise! @EnterpriseAtWk helps PGRs develop enterprising ideas and build a portfolio of enterprise skills.

Find out more and sign up here: bit.ly/3u1nd9J



@WarwickPgHub mentors to provide tips and answer any questions you might have – what work to submit, what to expect in the meeting, and how to pass your first PhD milestone.

Sign up here: bit.ly/3QSCAuW



The Office for Students (OfS) @officestudents · 1h

Wherever you're based in England, employers have the opportunity to sponsor or co-sponsor AI and data science master's students to develop brand awareness in tech and gain access to a national network of talent: groupgti.com/ai-scholarships

#JoinYourAIFuture #AI #careers #DataScience



Workshop on Naturalistic

The Centre for Brain and Cognitive Development (CBCD) at Birkbeck, University of London, is pleased to announce a new workshop on naturalistic experimentation of child

Child Development (NECD)

22-23 September 2022

researchers of child development who are interested in testing children's natural, real-life behaviour and thereby catalysing discoveries about human development.

We invite doctoral students and post-doctoral fellows to apply. The workshop is fully funded. **All Attendees will be funded for travel to London, including one-night accommodation and sustenance during the workshop.**

NECD has been created to educate about a variety of techniques to track the natural behaviour of infants and children. The workshop will be held on **22-23 September 2022, in Bloomsbury, London** and will include 32 attendees. The first day of the workshop will focus on practical training in the various technologies to record natural behaviour. The second day will focus on collaboration between the attendees in mini-projects. The best mini-project will be further supported by members of the CBCD team. The evening of the first day will include a poster session in which attendees will present their work and discuss potential collaborations.

NECD specifically aims to empower young scholars from underrepresented groups and regions by providing them with unique skills to integrate perspectives and methods from engineering and computer science into their developmental work. Therefore, **We strongly encourage applications from first-generation students or students from disadvantaged backgrounds.**

For further information, please visit the workshop website: <https://www.cbcd-necd.co.uk/>

TEACHING

Subscribe

Past Issues

Translate ▼

- 7 July 2022 - Undergraduate Final Year Students due to graduate in July
- 14 July 2022 - Undergraduate First Year Students
- 21 July 2022 - Undergraduate Intermediate Year Students

Dates can always be found on the **Departmental Exam Calendar**



Warwick University Library @warwicklibrary · 20h

New to archive research? Want to know what repositories are out there? Look at this guide by the MRC warwick.ac.uk/services/libra... #research #archives #Dissertation



UG and PGT module convenors 2022/23

Are you Reading lists for 2022/23 in Talis Aspire and up-to-date? **Staff with existing modules:**

- Please **check the 2022/23 draft and make any edits.** <https://warwick.rl.talis.com/mylists> will display all reading lists you have been responsible for.
 - If your module reading list is not included here, contact readinglists.library@warwick.ac.uk.
 - If a module is not running in 2022/23, or it is no longer needed, please advise us via readinglists.library@warwick.ac.uk.
 - If you are no longer the lead for a module reading list, please advise us via readinglists.library@warwick.ac.uk.
- Please make sure to **publish the list** by clicking the 'Publish' button. Please make sure to publish by 31st July, if at all possible.

Reading list Information and
Guidelines

Our subject librarian [Samantha Johnson](#) is always on hand with help and advice.

New to Moodle? Bookable support sessions

The Digital Learning Environment (DLE) team is now offering a series of bookable one-to-one **Moodle Support Sessions**. These are intended to be short appointments to discuss users' needs and requirements so that we can advise on appropriate tools in Moodle for the activity they want to create. These sessions are not for reporting errors or issues which should still be submitted via the Help Desk. Appointments are available in the first instance between 11am and 1pm on Tuesdays, 1pm and 3pm on Thursdays and 10am and 12pm on Fridays. [Sign up to appointments with DLE staff via MS Bookings](#)

For your students:

Careers Advice

[Siobhan Qadir](#), Careers Adviser

A key dates calendar has been created for UG students with key dates eg when marks are being released etc. This is the link; [Important dates \(warwick.ac.uk\)](#)

Request for student participants for AHPD study:

Dear staff, students,

We would like to invite you to participate in our latest research project led by Professor Almuth McDowall. This has ethical approval and we invite you to read through this information to encourage you to take part.

What is the purpose of the study?

The aim of the study is to investigate experiences of neurodivergent students in the UK – what are their needs, how are they being met, and what can we learn from

Why is my organisation being invited?

The Association of Heads of Psychology Departments is funding this practice research and have agreed to circulate our call for participation. We would really like it if you could distribute the call to everyone to whom you think this is relevant.

What are the potential benefits when supporting this research?

We will summarise the findings in accessible format. Reasonable adjustments are understudied, so we hope that our project will have practical value.

How can students and staff take part?

We are conducting an online survey and inviting neurodivergent students (both formally and self-diagnosed) and staff who support neurodivergent students (e.g. lecturers or disability support staff involved in designing and/or implementing reasonable adjustments) to take part.

The link to the survey, which includes the information sheet and informed consent form, is provided below:

Online survey link: https://bbk.qualtrics.com/jfe/form/SV_9N5SmXCqpVR8irA

How will we treat your data?

All data will be treated confidentially. During our analysis and reporting of the data, we will take the necessary steps to ensure that no individual or university can be identified from the data. The data collection will be led by Birkbeck University and has received ethical approval.

How you can help:

Please forward this invitation letter with the sign up link above to the students and staff who may be interested.

We thank you for your support!

RESEARCH

Research Impact Services

Inform **Research Impact Services (RIS)** if you are planning to submit a grant.

[Subscribe](#)[Past Issues](#)[Translate ▼](#)

grant that would bring more than £50K to Psychology, you can register your plans at the department site as these submissions are also sent to RIS.

Register Grant submission plans [here](#)

BPS Cognitive Section Conference: Back to the lab: Back to reality

7-9 September

Full details at <https://www.cogsec2022.com/>. The conference theme “Back to the lab: Back to reality” captures many things: getting back to the lab after Covid, conducting cognitive research that has meaning for everyday life, and an excuse to hum a great Soul II Soul tune. Registrations and submissions are now open (submission deadline has been extended to [29 July 2022](#)) and we welcome individual proposals and themed symposia as well as Work in Progress submissions. Some postgraduate bursaries are available. Register soon for the best rates for attendance and accommodation!

Reproducibility, Replicability and Trust in Science 2022 conference



[Covid-19 Updates](#) [Our events](#) [About us](#) [News](#) [Sponsorship](#) [Contact us](#) 

[Home](#) / [Our events](#) / [Conferences](#) / [Reproducibility, Replicability and Trust in Science](#)



Reproducibility, Replicability and Trust in Science

07–09 September 2022

Wellcome Genome Campus, UK

Registration and deadlines

Deadlines

Abstract and bursary
12 July 2022

Registration (In-person)
09 August 2022

Registration (Virtual)
31 August 2022

[Register](#)

Improving the robustness of scientific research

The overarching theme of this year’s conference is to position the challenge of reproducibility and replicability as a behaviour-change problem that, when addressed, can lead to culture change within research. Discussions will include the challenges of ensuring reproducibility and replicability in large, multicentre research collaborations, training researchers in reproducibility, tools that support reproducibility and replicability, social and behavioural aspects of culture change and local challenges to reproducibility on a global scale.

[Subscribe](#)[Past Issues](#)[Translate ▼](#)

groups such as data and services providers, tool developers, publishers, institutions and funders that are developing policies relating to research reproducibility.

We aim to organise this meeting as a hybrid conference – with on-site or virtual attendance.

[Details here](#)

Interdisciplinary Workshop: Attention

14/15 September

Register by 14 July

London School of Economics and
Political Science and online

If you would like to participate, please
email AttentionWorkshop@gmail.com by
14th July 2022

The workshop aims to bring together diverse scholars working on attention, from neuroscientists and psychologists to philosophers and anthropologists.

The workshop will approach attention from three overlapping perspectives:

1. The nature of attention, its fundamental properties and its variability, with a focus on describing, contrasting and building bridges among diverse disciplinary, cultural and historical models and theories of attention.
2. The role of attention in social, economic and political systems, as well as its functioning in the development of subjectivities, beliefs, perceptions and behaviours.
3. Contemporary concerns about the effects that the potential manipulation of attention is assumed to have on mental health, wellbeing, education, and, more broadly, human agency. This theme is of particular relevance to members of civil-society and academics whose work Contemporary concerns about the effects that the potential manipulation of attention is assumed to have on mental health, wellbeing, education, and, more broadly, human agency. This theme is of particular relevance to members of civil-society and academics whose work has the potential for positive impact in society.

IR | ED&I | Development | Wellbeing

Equality, Diversity & Inclusion in Psychology.

Rainbow Ideas Café

Join a Rainbow Ideas Café on 28 June to discuss the findings of the anonymised Stonewall Workplace Equality Workplace Survey. This will be followed by a celebration event at Radcliffe following our Gold Award, to celebrate the progress made and reflect on the work still to be done.



Personal Development Conversations

Conversations take place by 29 July.

Associated training:

[Warwick Principles and Social Inclusion,](#)

[Learn More](#)

BPS Research: Psychology Staff overworked and under supported in light of Covid-19, reveals new findings

Two short Covid-19 impact follow-up surveys were developed for psychology students and staff working within UK universities, to follow-up findings from a larger survey carried out in 2020. These two online follow-up surveys aimed to explore and update on key themes within the context of the Covid-19 pandemic, including: satisfaction with how teaching and learning are being delivered now, how manageable workload is and whether wellbeing needs are being met by universities.

The key findings were:

STAFF: [Read the brief report](#)

manageable.

- Staff also felt like they did not have enough time to undertake research: 79 per cent of staff disagreed/strongly disagreed that they had enough time to undertake research.
- Only half (51 per cent) of staff reported that their wellbeing needs had been met 'somewhat' or 'to a great extent' by their university. About a third (35 per cent) reported their wellbeing needs had been met 'very little', while 13 per cent said their wellbeing needs had not been met at all.

STUDENTS: [Read the brief report](#)

- Overall two-thirds (66 per cent) of psychology students strongly agreed/agreed that they were satisfied with how teaching was being delivered on their course. Students were most satisfied with teaching and learning when it was delivered face to face, or a combination of face to face and online. They reported the least satisfaction when teaching and learning were delivered entirely online.
- Three-quarters (75 per cent) of students reported that their wellbeing needs were being met 'somewhat' or 'to a great extent' by their university.
- Just over half (56 per cent) of psychology students strongly agreed/agreed that their workload was manageable.

The report recommends that universities explore ways to improve staff workload and to enable staff to undertake more research. Universities should investigate why students aged 21-25 year-old were less likely than students in other age groups to say their wellbeing needs were being met, with universities implementing a plan of long term support and solutions for staff and students alike.

If you would like any further information about the research, please contact the BPS Research and Evaluation Team at ResearchTeam@bps.org.uk

Gender equality award

We've launched a [new award](#) to recognise individuals and teams who have contributed to the enhancement of gender equality at Warwick. If you're doing something that addresses gender equality or know a member of staff or a student who is, you can [nominate now](#) before 30 September.

NEON Summit: Wednesday 13 July 09:30-17:00 (University of Leeds)

Over thirty higher education institutions and organisations are part of the NEON Widening Participation in Post Graduate Study Working Group has over thirty education institutions and organisations working collaboratively to address the issue of barriers to PGT and PGR courses for some groups of students. This conference aims to share learning from across the sector, provide space to discuss, reflect and agree actions. They will also be sharing their postgraduate diversity strategy blueprint and inviting attendees to sign up to our pledge to work collectively on this agenda. For further details and to register, please visit [this website](#).

SUSTAINABILITY

ENVIRONMENTAL SUSTAINABILITY June NEWSLETTER [HERE](#).

Some highlights:

Sustainability blog

We have started a [sustainability blog](#) on our website where you can keep up to date with news and events and our HogBlog.

We would like for students and staff to get involved! We particularly want to hear about your experiences with sustainability, any challenges you faced and tips you could give to others. So, whether you're a Green Champion, part of a sustainable society on campus or just have a passion for the environment and you would like to contribute and write something for our blog email us sustainability@warwick.ac.uk.



Warwick Sustainability Challenge

The [WIHEA ESD learning circle](#) is delighted to launch the 'Warwick Sustainability Challenge'. This is a project that has been developed in partnership with Economics, WMG, WBS, Warwick Enterprise, Estates, our Warwick Alumni, and Coventry City Council. The project will see staff and students across the whole University co-creating sustainable solutions to a particular challenge. Using a design thinking approach, the objective of this project is to provide a more holistic approach to sustainability in HE, linking the teaching and learning provision (Curriculum), to values and ways of working and studying on Campus, and the local Community by engaging with local people and partners (we are naming this 'CCC approach'). You can find more information about the project [here](#). Join the Challenge. Help us to shape a more sustainable world where to live!



Wildflowers

We are currently developing the wildflower areas on campus, to provide food and habitat for pollinators and wildlife! Areas that are being rewilded include the large wildflower area by Spine route, which stretches all the way from Radcliffe to the Sports club, which were sown in 2021. We also are rewilding areas by Sherbourne residences and at Gibbet Hill. We'll be doing surveys over the summer to record what wildflowers species are present.

[Tell us about your travel choices and influences](#)

Complete the [Choose your way Warwick survey](#) to tell us more about your travel and what influences this – you'll inform the future of transport, and be entered into a prize draw to win 1 of 5 £50 LoveToShop e-vouchers (valid at stores including M&S, Argos, John Lewis and H&M). The survey is part of our work with Transport for West Midlands where we're trialling new approaches and technologies for getting to, from and around campus to help address the climate emergency and make moving around our campus and local area easier.

Elsewhere:



[SAFAR Film Festival comes to Warwick Arts Centre](#)

Warwick Arts Centre is celebrating the 10th anniversary of the SAFAR Film Festival with 5 special screenings from 4-8 July. Dedicated to cinema from the Arab world, join the festival to explore Arab cinema past, present and future. [Find out more and purchase your tickets.](#)

is now on sale

- 8 orchestras
- 8 internationally renowned soloists
- 3 international ensembles



[Subscribe](#)

[Past Issues](#)

[Translate](#) ▼



PHOENIX
Featuring Ravel's Piano Concerto & *Symphonie Fantastique* by Berlioz.

The Hallé [Pictured]

Thu 20 Oct

Featuring Rachmaninov *Piano Concerto No.3* & Shostakovich *Symphony No.5*.

CBSO

Thu 3 Nov

Featuring Rachmaninov's *Symphonic Dances*.



Maxim Vengerov Gala Concert [Pictured]

Sat 3 Dec

The violin prodigy and Gramophone Artist of the Year joins Malta Philharmonic Orchestra for this special evening.

Royal Philharmonic Orchestra

Wed 15 Feb

Featuring Mozart's *Clarinet Concerto*.

Swedish Philharmonia

Fri 17 Mar

With Serbian-French violinist Nemanja Radulović.



Chineke! Orchestra [Pictured]

Thu 27 Apr

Includes Vaughan Williams' *Oboe Concerto* & Beethoven's *Symphony No.4*.

Estonian National Symphony Orchestra

Thu 18 May

Pianist Freddy Kempf plays Rachmaninov *Piano Concerto No.2*.

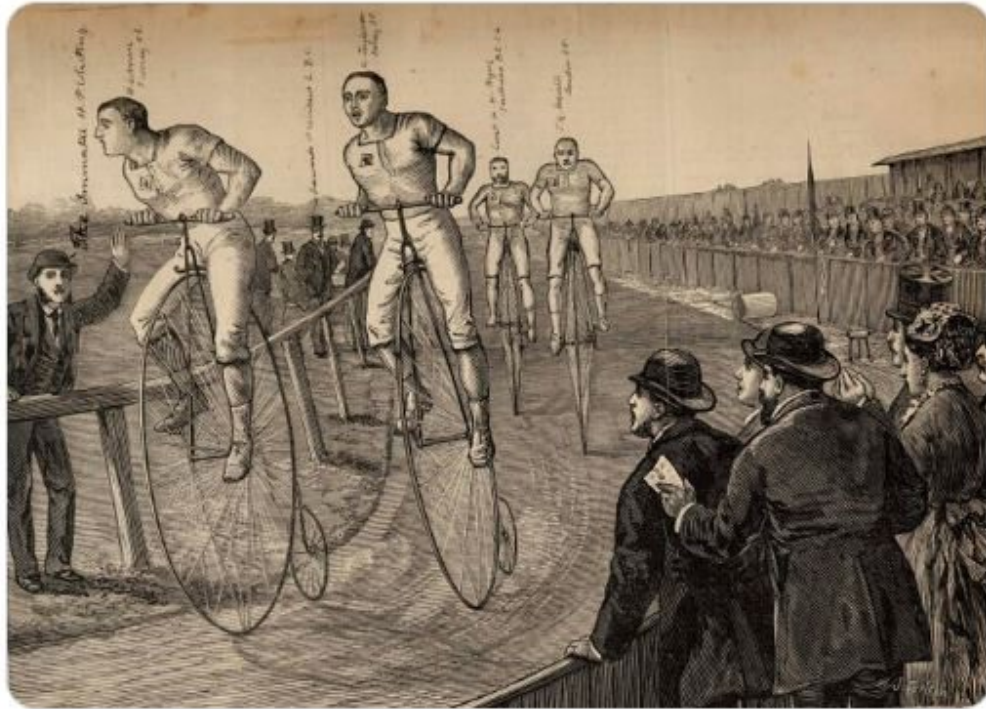
Subscribe

Past Issues

Translate ▼

LIBRARY

This image is from the National Cycle Archive stored in [Gwent Museum](#). Like it? If so, there's a free postcard of the image which you can pick up from the MRC reception. Next time you're passing why not drop in and get one?



Copyright (C) *Department of Psychology: 2022* All rights reserved.

Our mailing address is:

Want to change how you receive these emails?
You can [update your preferences](#) or [unsubscribe](#)

[Subscribe](#)

[Past Issues](#)

[Translate](#) ▼

