

[Subscribe](#)

[Past Issues](#)

[Translate](#) ▼

[View this email in your browser](#)



**9 June 2022**



## Psychology Bulletin

[Email content to Catherine Johnstone](#)

[NEWS](#)



## Psychology awarded Silver Athena Swan Award

This means that the department has shown it has good structures and processes in place to support gender equality work, has identified and made progress against issues in key priority areas and, most importantly, has shown success in addressing gender equality.

This is, therefore, a whole-department success: the award reflects consistent efforts to address gender equality across our department and we could not have achieved it without the support and buy-in of everyone. Thank you to everyone who answered questionnaires, attended focus groups, and gave us feedback, and thank you to everyone who more generally contributed to the Athena Swan agenda in their department activities by taking on new roles or supporting new initiatives. And particular, of course, to the Athena Swan Working Group who put so much effort into these initiatives and the application.

Dr Kate Messenger and Dr Michaela Gummerum (Athena Swan Co-Chairs) and Professor Derrick Watson (HoD).

[Learn More](#)



[Subscribe](#)[Past Issues](#)[Translate](#) ▼

## ESRC DTP PhD fellowship

Supervised by [Professor Kim Wade](#) there is a fellowship available investigating Legal Decision-Making, Witness Evidence, and Credibility Assessments in Refugee Status Determinations

Closing date: 18 July 2022

[Apply here](#)

## Professor Dieter Wolke

Awarded Honorary Doctorate (Doctor Honoris Causa) from the Faculty of Medicine, University of Helsinki June 2022



## PhD Fellowships in Psychology

We are delighted to announce that one PhD Fellowship, supervised by [Dr Jesse Preston](#) and for students wishing to start a PhD in October 2022, has now become available.

Closing date: 10 June 2022

[Apply here](#)

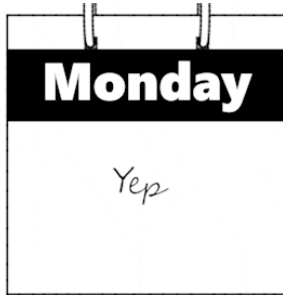


## Professor Anu Realo

Elected member of Academia Europaea!

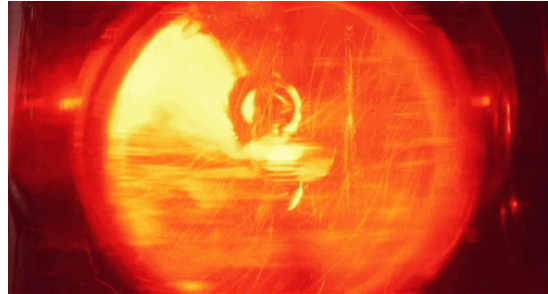
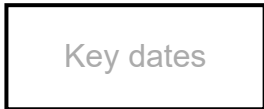
[Learn More](#)

INFORMATION



### Departmental dates

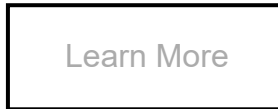
Want to check key departmental events and dates (including exam boards, away days and graduation)? Check out the Key Dates calendar:



### Emergency & Help

All Emergency calls on campus (fire, police, ambulance) x **22222** or **02476 52222** need to go through Community Safety.

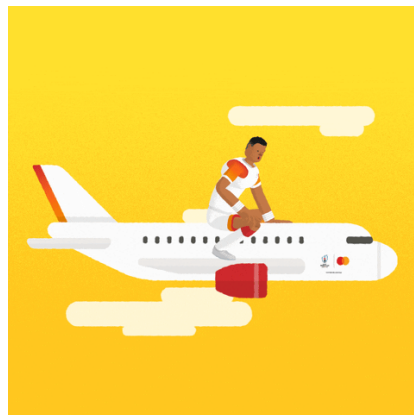
(save to your MOBILE!)



### Forgotten your keys/pass? No-one around? Call Community Safety:

**24-hour Control Centre** (general enquiries) internal extension x22083 or 024 7652 2083

### Community Safety.



**NEW Risk Assessment.** To ensure

[Subscribe](#)[Past Issues](#)[Translate ▼](#)

See also information from Finance on recommended Travel Apps circulated 6-6-22 by email from HoD.Psychology@warwick.ac.uk in response to flight delay and travel situation.

### Funding travel:

**Academic Staff:** Discretionary account spend >£500 must be approved by HoD (can be done via [hod\\_psychology@warwick.ac.uk](mailto:hod_psychology@warwick.ac.uk) by email when Risk Assessment submitted).

**PhDs:** ensure that you have the funds available in your Postgraduate fund and get your supervisor to email permission for booking, which you should include when you request a purchase order.

### CONFERENCE Guidance:

- Conference bookings (fees) do not require FinRegs approval
- If accommodation is included as part of the conference package, FinRegs approval is not required
- If preferential rates are offered for conference attendees at the conference hotel or a nearby hotel, this can also be booked without FinRegs approval

booking travel and get signed off by emailing to [hod\\_psychology@warwick.ac.uk](mailto:hod_psychology@warwick.ac.uk)

**Travel bookings:** >£500 and/or outside Europe must be booked through Key Travel (email Catherine [c.j.johnstone@warwick.ac.uk](mailto:c.j.johnstone@warwick.ac.uk) with mobile phone number to get set up as a Key travel Booker) and advised for travel <£500 so assistance available if any cancellations/delays.

**Purchase Order for travel bookings** through Key Travel – request from Anita Burrows [a.burrows.1@warwick.ac.uk](mailto:a.burrows.1@warwick.ac.uk) (Mon, Tues, Thurs). Emergencies or covering Anita's leave: Catherine [c.j.johnstone@warwick.ac.uk](mailto:c.j.johnstone@warwick.ac.uk)

**Accommodation:** Ensure compliance with **Fin Regs 16 – Travel, Subsistence, Gifts and Hospitality** to ensure you can reclaim expenses (Air B&B not allowed unless there is a special case for applying for Fin Regs approval from Fin Regs Champion, Steve McGladrigan [s.mcgladrigan@warwick.ac.uk](mailto:s.mcgladrigan@warwick.ac.uk) )

*The University does NOT recommend using AirBnB properties for accommodation bookings – approval from FinRegs and Health & Safety must be sought if AirBnB is being considered, and there are additional procedures and checklists that must be followed.*

---

## Friederike's Coffee and Catchup c 10:30

### Link via email - All Welcome!



Language & Learning Group Seminar:

# Hearing speakers produce silent gestures that facilitate efficient communication, Jiahao Yang

12:00 Wednesday 15 June

For Teams link email: [Marta.Wesierska](mailto:Marta.Wesierska)

Join us for the final Language and Learning seminar of the year. Abstract:

This talk will focus on communicative efficiency as a factor that shapes silent gesture. We argue that silent gesture is fundamentally usage-based and is designed to achieve efficient communication. To test this, we measured the communicative efficiency of gestures that are produced for a target concept at varying frequencies. We found that comprehenders are more likely to provide interpretations that are shared across comprehenders and highly semantically related to the target word when interpreting a most frequently produced gesture than a less frequently produced gesture. This result indicated that silent gesture is efficient for comprehenders. Ongoing related experiments will also be presented, which investigate efficiency for both producers and comprehenders. These experiments help clarify the possible factors that shape human communication in the absence of pre-established form-meaning mapping.

[Subscribe](#)[Past Issues](#)[Translate ▼](#)

## Placement talks

Psychology MSc PsychRes will be presenting their placement projects in a mini-conference in the department.

12:45 - 16:00 Thursday 16 June

[Learn More](#)

12:45	Welcome by Friederike Schlaghecken	
13:00	Speaker 1: Erdene Erdenechuluun	<i>Adrian von Muhlenen</i>
13:30	Speaker 2: Aimee Cheung	<i>Jag Jutley Neilson</i>
14:00	Speaker 3: Sacha Godhania	<i>Sam Johnson</i>
14:30	Coffee Break	
15:00	Speaker 4: Lia Lovecka	<i>Michaela Gummerum</i>
15:30	Speaker 5: Faaizah Shaban	<i>Anu Realo</i>
16:00	Speaker 6: Leizhi Wang	<i>Kristy Themelis</i>

## Warwick Sustainability Challenge

13 and 15 June

Brought to you by the WIHEA ESD learning circle, the Challenge will see staff and students co-creating ideas to tackle a real environmental challenge in Coventry, using a more holistic approach to sustainability in HE. The Challenge will engage participants in two 3-hour online workshops on **13th and 15th June 2022, 2-5pm**, plus a 1-hour optional online drop in support session.

[Learn more](#)

## Warwick Celebrates

**Psychology Postgraduates, including DCLin**

15:00 - 17:00 Sunday 10 July 2022

**Psychology Undergraduates**

15:00 - 17:00 Tuesday 12 July 2022

## Psychology 2022 Degree Congregation:

11:00 - 13:00 Tuesday 26 July 2022



**AFRICA HUB**  
Monday 20 June, 1.30 - 6pm

**PANEL DISCUSSIONS**  
North-South collaborations, Warwick activities and student led initiatives

**DISTINGUISHED AFRICA LECTURE**  
Professor Ernest Aryeetay, Secretary-General of ARUA

[www.warwick.ac.uk/global/partnerships/africa](http://www.warwick.ac.uk/global/partnerships/africa)

**Open invitation: Please join us for the launch of the Warwick Africa Hub on Monday 20 June 2022.**

The Warwick Africa Hub will connect Warwick and African partners to jointly address global challenges and support the development of the region's leaders in research, education, and beyond. The Hub launch programme features an announcement by the Vice-Chancellor, three discussion panels which will explore Warwick's activities in Africa; student initiatives and opportunities; and North-South research and education collaborations. The inaugural Distinguished African Lecture "*Africa and the SDGs: What will it take to achieve them?*" will be given by Professor Ernest Aryeetey, Secretary-General of the African Research Universities Alliance (ARUA).

Register to attend the Africa Hub Launch and review the programme:  
<https://warwick.ac.uk/global/partnerships/africa/africa-hub-launch/>

## Postdocs and Postgraduates

### WMS Postgraduate Research Symposium

**Wednesday 22 June, Gibbet Hill**

The WMS postgraduate Research symposium is just around the corner! The day will be taking place onsite with catering and refreshments provided throughout the day, so a great opportunity to catch up with colleagues from across the Faculty as well as to view all the excellent research being carried out by the WMS student body. You can view the programme for the day [here](#) and register your attendance [here](#). We look forward to seeing you on the day!

### Early Career Staff Social group

**Archit Tamboli** has started a social group for early-career staff members. I think the group would be helpful for a lot of local and international staff members who have moved from different cities/counties and want to meet other early career staff at Warwick. Here is the [link](#) to the group.



[Subscribe](#)[Past Issues](#)[Translate ▼](#)

include an [ideas generation workshop](#) to address critical change and sustainable challenges on 21 June, [two social sciences events](#) on Knowledge Transfer Partnerships and Commercialisation on 23 June and an ECR [health-related one-day workshop](#) on 7 July

## Transferable skills courses for PhDs:

**CH954 Science Communication** a 3 day non-residential course, including one evening at the Coventry & Warwick BBC.

This module aims to help you to communicate your research findings accurately and concisely to different audiences. The main focus is on how to communicate in print, radio and TV to non-scientific audiences, but the skills will translate across to your research reports and presentations. The course will consist of a variety of seminars by experts in the field on for example, where news originates, how to construct a press release, critical analysis of the media, and how to respond to journalistic enquiries.

**Wednesday 22 to Friday 24 June 2022** and is aimed primarily at Second year students.

[Book via SkillsForge](#)

**CH953 Team Working in a Research Environment** is hybrid course where 4 sessions are on-line and one day face to face.

This 1st year module is designed to help you develop and enhance your team working and networking skills in a scientific research environment. The emphasis is on the role of teams within the research environment in order to create quality outputs. The ways that different personality types interact together will be explored and experienced in practice by solving novel problems in groups.

This course is designed to help participants:

- get to know each other well enough to begin the process of creating their own collaborative networks
- gain the confidence and skills to work in research teams that cross the boundaries of scientific disciplines
- gain sufficient self-knowledge that they can reflect on their personal impact on others and how this influences the dynamics of their work group
- feel confident about their ability to build valuable and positive relationships with their supervisors and colleagues

The course will run on **20, 22, 24, 28 and 30 June 2022** and is aimed at 1st Year students.

[Subscribe](#)[Past Issues](#)[Translate](#) ▼

## Call for Papers

the *PGR Network Team* of the *Productivity & Future of work GRP* at the University of Warwick is pleased to invite Paper submissions from PhD students for the Annual GRP Conference on *"Artificial Intelligence and Wellbeing in the Workplace"*.

### Leading Themes

- AI & Employee Productivity
- Employee Wellbeing in the Workplace
- AI & Emotional Regulation in Workplace
- Digitalization & Productivity/Creativity
- Interaction between Robotic and Human Labor

*Note: The Conference themes are not limited to the above-mentioned themes.*

The conference is aimed at bringing together PhD researchers from within and outside the University of Warwick to foster discussion and dissemination of research on the interaction of wellbeing in workplaces, digitalization, and an extended use of artificial intelligence. The submissions are welcome from PhD researchers at any stages of their PhDs. *Extended Abstracts, chapters of thesis, working draft and research proposals related to the themes of the conference are all welcome.*

The conference will take place in-person at the University of Warwick. We have a limited capacity to cover travel and accommodation costs. Requests for cost coverage will be prioritized on a need/hardship basis. Those appointed a fund, will be informed whether their costs will be covered fully or partially.

There will be an *award for the best paper* in the Conference.

There are **NO Registration** fees. Please make your submissions using the QR code below. If you have any queries, please email [ProductivityGRP@warwick.ac.uk](mailto:ProductivityGRP@warwick.ac.uk)

### Important dates:

**Deadline for Submission: 13<sup>th</sup> June 2022**

**Acceptance decision: 20<sup>th</sup> June 2022**



follow us on Twitter @ProductivityGRP



[Subscribe](#)[Past Issues](#)[Translate](#) ▼

COLLEGE

Thank you to the participants of yesterday's PGR matters event for the insightful discussion!

We have a few more sessions planned for this term - providing bite-sized information on different topics important to PGR life.

Find out more and sign up: [bit.ly/3NoVfN3](https://bit.ly/3NoVfN3)



Upcoming Events

## PGR Matters

27 June, 1pm	PhD Networks
11 July, 1pm	Warwick Enterprise
date tbc	IAS Post-doc opportunities

ALT

## TEACHING

### Training Session for Personal Tutors

Our final session for this academic year is taking place 12:00-13:00, 13 June and will focus on facilitating conversations around wellbeing. You can sign up to attend here:

[Sign up to Wellbeing Session](#)

---

## UG and PGT module convenors 2022/23

Are you Reading lists for 2022/23 in Talis Aspire and up-to-date? **Staff with existing modules:**

- Please **check the 2022/23 draft and make any edits.** <https://warwick.rl.talis.com/mylists> will display all reading lists you have been responsible for.
  - If your module reading list is not included here, contact

[Subscribe](#)[Past Issues](#)[Translate ▼](#)

- If a module is not running in 2022/23, or it is no longer needed, please advise us via [readinglists.library@warwick.ac.uk](mailto:readinglists.library@warwick.ac.uk).
- If you are no longer the lead for a module reading list, please advise us via [readinglists.library@warwick.ac.uk](mailto:readinglists.library@warwick.ac.uk).
- Please make sure to **publish the list** by clicking the 'Publish' button. Please make sure to publish by 31st July, if at all possible.

Further changes can be made to reading lists after publishing, if needed.

Reading list Information and Guidelines

Our subject librarian [Samantha Johnson](#) is always on hand with help and advice.

## New to Moodle? Bookable support sessions

The Digital Learning Environment (DLE) team is now offering a series of bookable one-to-one **Moodle Support Sessions**. These are intended to be short appointments to discuss users' needs and requirements so that we can advise on appropriate tools in Moodle for the activity they want to create. These sessions are not for reporting errors or issues which should still be submitted via the Help Desk. Appointments are available in the first instance between 11am and 1pm on Tuesdays, 1pm and 3pm on Thursdays and 10am and 12pm on Fridays. [Sign up to appointments with DLE staff via MS Bookings](#)

## For your students:

## Careers Advice

[Siobhan Qadir](#), Careers Adviser

## PRSDS Project:

For more information and how to apply please check the advert: [PRSDS 21 22 CIGA](#)

**tablet game to teach children  
difficult grammatical structure**

Contact: [Chiara Gambi](#)

Deadline for applications: 10 June

## Summer Job Opportunities

### *On-campus summer events and job opportunities*

This summer we welcome a number of large events to campus: Warwick Celebrates, Summer Graduation, Commonwealth Games and International Children's Games. Warwick Conferences, in conjunction with Unitemps, has opportunities to get involved in a wide variety of front and back of house roles as part of the celebrations. Click [here](#) to find out more details and feel free to share with family and friends!

### **To promote to your students: [Term 3 Survey open](#)**

The Term 3 Survey is now live and we're calling on you, our staff community, to help promote it to our students. [Find out more about the survey, download promotional assets](#) and play your part in supporting us with evaluating learning and teaching at Warwick.

[Subscribe](#)
[Past Issues](#)
[Translate ▼](#)

we're looking for someone to join our Sustainability team, as an Assistant Sustainability Champion! This is a graduate/year-out position, where you'll be involved with communicating the University's Sustainability message. Visit: [bit.ly/3xv8INA](https://bit.ly/3xv8INA) for more info 🌱

**WE'RE HIRING! STUDENT SUSTAINABILITY CHAMPION!**

A graduate/year-out position, focused upon supporting environmental communication and promoting sustainability across the University!

**Application Deadline: 21st June**  
**Link in bio!**

A key dates calendar has been created for UG students with key dates eg when marks are being released etc. This is the link; [Important dates \(warwick.ac.uk\)](https://warwick.ac.uk).

## ITLR Student Co-creation Officer recruitment

Vacancies have been advertised to recruit two Student Co-Creation Officers, with the aim to recruit ideally one officer to consider the undergraduate experience and another officer to consider the postgraduate experience.

The advert is now live on the Unitemps website here: [Unitemps - ITLR Student Co-creation Officer](#)

Job advert closes: **Monday 27 June 2022**

**Contact:** [Lucy Davis](#) Student Engagement Officer

## MSc/PgDip in Sleep Medicine at the University of Oxford

Here are some links where they can find out more information about the programme:

[Course Page](#)

[MSc](#)

[PgDip](#)

[Standalone modules](#)

---

## RESEARCH

### Research Impact Services

Inform **Research Impact Services (RIS)** if you are planning to submit a grant.

You can do so by contacting [Andrea Howard](#) directly. Alternatively, if it is for a grant that would bring more than £50k to Psychology, you can register your plans at the department site as these submissions are also sent to RIS.

Register Grant submission plans [here](#)

### Connecting Culture GRP looking for new leads

The Connecting Cultures GRP is looking to appoint three new co-leads from across all faculties. [Find out more about the positions and how to apply.](#) Deadline: 17 June.

### Warwick Cross Faculty Plastics Group - Research with Impact

As part of our efforts to achieve the Sustainable Developments Goals that have been set out by the United Nations, we must tackle the unprecedented levels of plastic waste that is generated by society. To this end, we are organising an event on '**Sustainability and Plastics**', aiming to bring the key Warwick researchers who are actively involved in sustainability research across the plastic value chains, from **polymer chemistry, processing and manufacturing, data science, environmental science, business management, social science and beyond**. Through this event, we hope to build a Warwick community on 'sustainable plastics', to identify key challenges, bridge the knowledge gaps, link our research strengths and explore joint solutions.

We welcome colleagues from all three faculties who are interested in interdisciplinary research and would like to explore the topic of Plastics and Sustainability. This event is 'in person' and will have an external facilitator guiding the activities. For further details and to register for the event, please go to [Sustainability and Plastics \(warwick.ac.uk\)](https://www.warwick.ac.uk/sustainability-and-plastics). The deadline for registration is 10 July.

## Call for submissions for the 18th European Congress of Psychology

[18th European Congress Of Psychology 2023 - Brighton, UK \(ecp2023.eu\)](https://www.ecp2023.eu)



**RELAUNCH OF  
INTERNATIONAL FUNDS**

**GLOBAL OPPORTUNITIES**

- International Partnership Fund

**STRATEGIC PARTNER FUNDS**

- SJTU
- Monash Warwick Alliance
- EUTOPIA

[www.warwick.ac.uk/global/partnerships/funding](http://www.warwick.ac.uk/global/partnerships/funding)

# Relaunch of International funds

## Global opportunities

The [International Partnership Fund \(IPF\)](#) aims to strengthen or initiate exchange between Warwick academics and their counterparts from leading international universities or institutes. We especially welcome proposals with partners in our priority regions (Africa, China, Europe & North America).

Applications are made through an [online application form](#). The deadline for applications is **Sunday 10th July 2022**.

## Strategic partnership opportunities

To complement our IPF scheme, we also have specific funds to encourage collaboration with most of our strategic partners. These grants are jointly evaluated and funded with our partners:



from Shanghai Jiao Tong University (SJTU), China and provides funding for projects lasting up to 12 months. Warwick academics can request 5,000 GBP from Warwick and SJTU academics can request 50,000 RMB from SJTU.

The deadline for this call is **Sunday 10th July 2022**. All funding for successful awards must be defrayed by 31st July 2023.

- The **Monash Warwick Alliance** offers several funding schemes to encourage research, teaching, and professional staff, as well as students, to collaborate with their counterparts in Monash, Australia. These schemes have recently been reactivated and are now open.
- **The EUTOPIA Connected Research Communities** and the **Research Mobility Program** will allow you to establish links with colleagues in Vrije Universitet Brussel, CY Cergy Paris University, University of Gothenburg, University of Ljubljana, Pompeu-Fabra University-Barcelona. The aims are to: support research visits across EUTOPIA partner universities, foster research collaborations, allow the sharing of expertise and infrastructures, and the development of joint research activities.

The EUTOPIA Connected Research Communities call closes on **Friday 10th June 2022**. Use this space to add more details about your brand, a customer quote, or to talk about important news.

[Learn More](#)

# HR | ED&I | Development | Wellbeing

## Online Learning Resources



## Conversations

Conversations take place by 29 July.

Associated training:

[Warwick Principles and Social Inclusion](#),

[Learn More](#)

## Warwick Inclusion Conference

Spaces are still available for our Warwick Inclusion Conference online sessions on 16 June. [See the full programme and sign up](#).

## inVISIBLE Research & Diversity Conference: Final attendance call

Register to attend the [inVISIBLE Research & Diversity Conference](#), taking place on 8, 13 and 15 July and aimed at promoting the visibility of ethnic minorities in academia. Find out more and register by 24 June.

## Behavioural Values Workshops

The purpose of the workshops is to develop a set of University values and behaviours, and for staff to be part of the conversation. It is important that a broad representation of staff attends, to include a variety of roles, length of service, departments and diverse perspectives. Dates: 27/28/29 June. Staff can register [here](#).

## Carers UK Lunch and Learn session for Warwick staff

**10:00 - 11:00 Wednesday 29 June**

The session will help you to:

- Gain information on what it means to be a working carer.
- Hear about what support is available for carers - both in and outside the workplace.
- Identify options to help you/your colleagues combine work and care.
- Understand the support and policies in place at University of Warwick

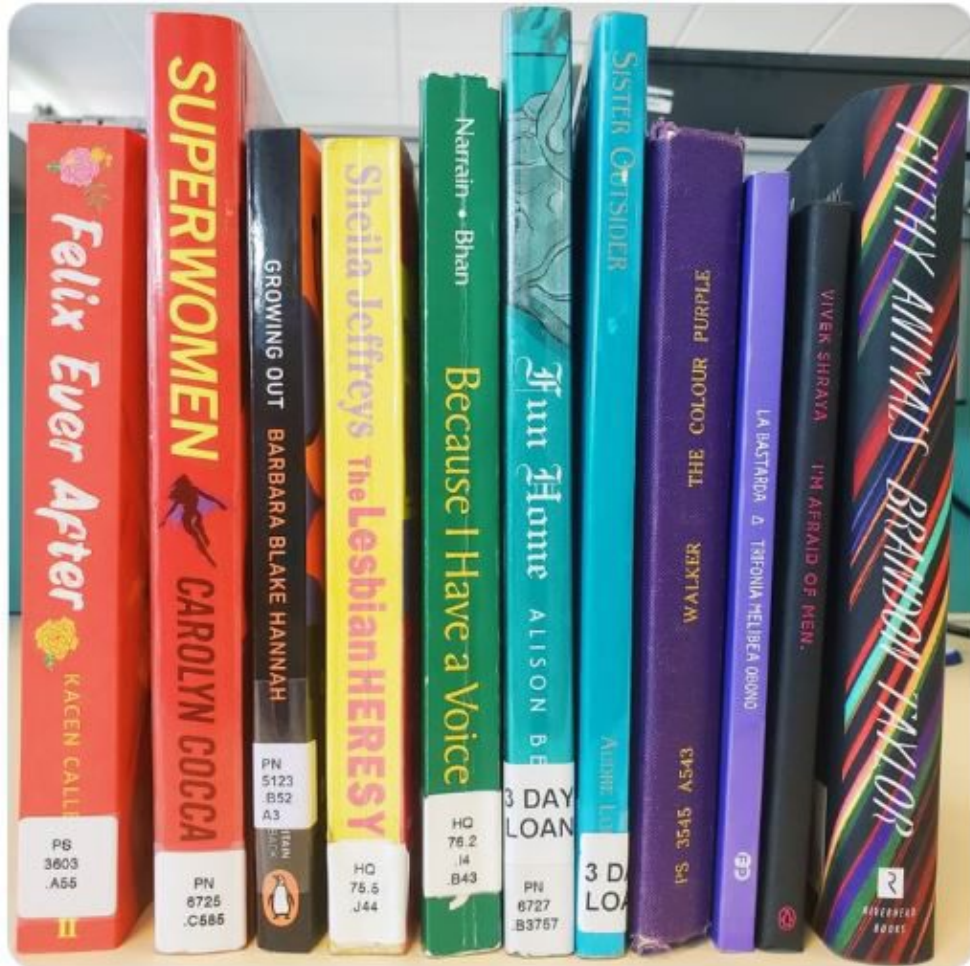
[Subscribe](#)[Past Issues](#)[Translate](#)

To register, please follow the link below: [Carers UK Lunch and Learn Session \(warwick.ac.uk\)](#)



Warwick University Library @warwicklibrary · 13h

Happy #pridemonth from us at the library! 🏳️🌈 here's just a few of our recommendations and you can find lots more using our library search 📖 It's important to educate yourself and others on the LGBTQ+ community, their history, experiences - and books are a great starting point.



## SUSTAINABILITY

Interested in finding more about Sustainability? Join the [Psychology GREEN TEAM](#)

ENVIRONMENTAL SUSTAINABILITY NEWSLETTER [HERE](#).

## WIRE: Climate Change and Sustainability workshop

Tuesday 21 June 2022 - 09:30 – 15:15

Space 2, Radcliffe Conference Centre

It aims to bring together a range of researchers across the University, to explore and discover possibilities for future interdisciplinary collaborations.

Our contribution to solving the wicked problems of Climate Change and Sustainability starts by bringing together talented and open-minded researchers, who are daring enough to challenge the status quo of how we are addressing problems.

WIRE intends to be a catalyst to foster conversations between researchers keen to engage with each other across disciplines.

Addressing Climate Change and Sustainability challenges means moving ourselves out of the comfort zone of our disciplines and ways of thinking. **It means getting us to think the unthinkable.**

- Are you a researcher motivated to develop research skills and capabilities for innovative thinking needed to solve critical Climate Change and Sustainability challenges?
  - Are you stimulated by conversations with a wide range of researchers with diverse disciplinary background?
  - Are you seeking to enhance your research network and meet other enthusiastic and innovative researchers?
  - **The workshop discussions will be focused around 3 themes of research exploration:**
    - Low carbon technologies and sustainable futures
    - Pathways towards sustainability
    - Climate Action in context of sustainable development goals
- Book your place [here](#). If you have any questions about this workshop, do not hesitate to get in touch with us.

Event Link : <https://warwick.ac.uk/research/priorities/materials-innovative-manufacturing/wire/>

---

## Elsewhere:

Subscribe

Past Issues

Translate ▼

We recently celebrated Giving Day 2022. So far we've raised an amazing £172,516.00!

We want to say thank you so much to everyone who supported. Click below [↓](#) to hear from some of the people who will benefit from your generosity!

[bit.ly/3GpAeiG](https://bit.ly/3GpAeiG)



Warwick Institute of Engagement @warwickengages · 19h

...

Something BIG is coming to @warwickuni in @warwickarts in July.

Sign up to our newsletter to be the first to find out more...

[resonatefestival.co.uk](https://resonatefestival.co.uk)



Subscribe

Past Issues

Translate

IMAGINEER

What an incredible day!!!  
 Thank you to everyone involved.  
 From the designers, performers, cyclists, makers & dancers to dog handlers, supporters & volunteers - none of this could have happened without you!  
 Well done #Coventry! ❤️

#PlatinumJubilee 🇬🇧  
 @Jubilee\_Pageant @birminghamcg22



Warwick Arts Centre liked

 **University of Warwick** @warwickuni · 4h

We marked the Queen's Platinum Jubilee last week with beacon lighting and delicious Victoria sponges our students baked! The University of Warwick was granted our Royal Charter in 1965 #PlatinumJubilee #HM70

 A collage of four images: a beacon lighting at night, a student in a kitchen with two pans, a student holding a drink, and a close-up of a beacon.




*Copyright (C) \*Warwick: 2022\* \*|UOW|\*. All rights reserved.*

Our mailing address is:

Want to change how you receive these emails?  
You can [update your preferences](#) or [unsubscribe](#)

