

[View this email in your browser](#)



16 June 2022



Psychology Bulletin

[Email content to Catherine Johnstone](#)

[NEWS](#)



Congratulations to our own [Professor Dieter Wolke](#), who has received a rare Honorary Doctorate from the Medical School at the University of Helsinki in recognition of his

Congratulations to Dr Emily Spearing on passing her viva on Monday

Melina Kunar said: “Emily wrote a great thesis examining the relationship between confidence and eyewitness accuracy judgements, with several of her chapters already published”. It was lovely to join Emily and Supervisor Kim Wade in the Common Room to toast Emily’s success in person!



ESRC DTP PhD fellowship

Supervised by Professor Kim Wade there is a fellowship available investigating Legal Decision-Making, Witness Evidence, and Credibility Assessments in Refugee Status Determinations

Closing date: 18 July 2022

[Apply here](#)

MSc Research presentations

TODAY! Thursday 16 June

H148 Humanities

12:45 - 17:00

[Details below](#)

[Subscribe](#)[Past Issues](#)[Translate ▼](#)

Time	Information	Speaker	Title	Supervisor
12:45	Welcome			
13:00	Speaker 1	Erdene Erdenechuluun	Investigating the Relationship between Earworms and Attention Network Performance	Adrian von Muhlenen
13:30	Speaker 2	Leizhi Wang	tba	Kristy Themelis
14:00	Speaker 3	Sacha Godhania	tba	Sam Johnson
14:30	Coffee Break			
15:00	Speaker 4	Lia Lovecka	How children regulate the emotions of others	Michaela Gummerum
15:30	Speaker 5	Faaziah Shaban	tba	Anu Realo
16:00	Speaker 6	Aimee Cheung	Time Perception, ADHD Traits, and Student Experience	Jag Jutley Neilson



Men's Health Week 2022

To celebrate national Men's Health Week from 13-19 June, the Wellbeing team are running a competition to win a wellness prize. It's all about appreciating the men in our lives - [find out how to enter and see how men can give themselves a health MOT.](#)

Professor Anu Realo

Elected member of Academia Europaea!

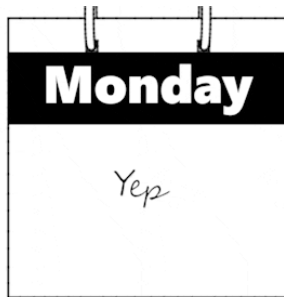
[Subscribe](#)

[Past Issues](#)

[Translate](#) ▼



INFORMATION

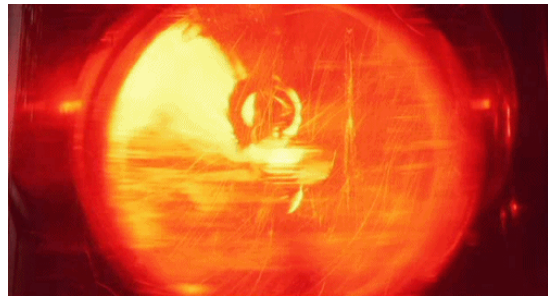


Departmental dates

Want to check key departmental events and dates (including exam boards, away days and graduation)? Check out the Key Dates calendar:

[Key dates](#)

Forgotten your keys/pass? No-one around? Call Community Safety:



Emergency & Help

All Emergency calls on campus (fire, police, ambulance) x **22222** or **02476 52222** need to go through Community Safety.

(save to your MOBILE!)

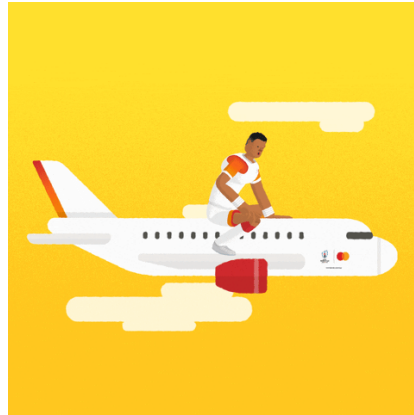
[Learn More](#)

24-hour Control Centre (general enquiries)
internal extension x22083 or 024 7652 2083

Community Safety.

[Subscribe](#)[Past Issues](#)[Translate](#) ▼

Umbrella Security Protection is available as additional protection for all devices, whether working on campus or from home. Find out what this means for you and the University.



Planning to travel?

See also information from Finance on recommended Travel Apps circulated 6-6-22 by email from HoD.Psychology@warwick.ac.uk in response to flight delay and travel situation.

Funding travel:

Academic Staff: Discretionary account spend >£500 must be approved by HoD (can be done via hod.psychology@warwick.ac.uk by email when Risk Assessment submitted).

PhDs: ensure that you have the funds available in your Postgraduate fund and get your supervisor to email permission for booking, which you should include when you request a purchase order.

CONFERENCE Guidance:

- Conference bookings (fees) do not require FinRegs approval
- If accommodation is included as part of the conference package, FinRegs approval is not required

NEW Risk Assessment. To ensure valid Business Insurance complete the NEW Risk Assessment form prior to booking travel and get signed off by emailing to hod.psychology@warwick.ac.uk

Travel bookings: >£500 and/or outside Europe must be booked through Key Travel (email Catherine c.j.johnstone@warwick.ac.uk with mobile phone number to get set up as a Key travel Booker) and advised for travel <£500 so assistance available if any cancellations/delays.

Purchase Order for travel bookings through Key Travel – request from Anita Burrows a.burrows.1@warwick.ac.uk (Mon, Tues, Thurs). Emergencies or covering Anita's leave: Catherine c.j.johnstone@warwick.ac.uk

Accommodation: Ensure compliance with **Fin Regs 16 – Travel, Subsistence, Gifts and Hospitality** to ensure you can reclaim expenses (Air B&B not allowed unless there is a special case for applying for Fin Regs approval from Fin Regs Champion, Steve McGladrigan s.mcgladrigan@warwick.ac.uk)

The University does NOT recommend using AirBnB properties for

[Subscribe](#)[Past Issues](#)[Translate](#) ▼

hotel or a nearby hotel, this can also be booked without FinRegs approval

be sought if AIRBNB IS being considered, and there are additional procedures and checklists that must be followed.

Friederike's Coffee and Catchup c 10:30 Link via email - All Welcome!



WIHEA Masterclass: Peer Mentoring

Thursday 16 June

14:00 - 16:00 MS Teams

Sign up and [Find out more here](#)

Over the last 30 years or so, there has been growing support for the positive benefits of peer mentoring as a key aspect of learning and building learning communities in Higher Education and in other contexts. Peer mentoring facilitates students in their university experience by offering 1-2-1 support from those who are at a similar stage to themselves but who have more knowledge, understanding or experience in a particular area. From the transition to university and progression throughout, students are able to benefit from others' experiences, and both mentees and mentors can develop transferable skills. Peer

[Subscribe](#)[Past Issues](#)[Translate](#) ▼

in their work on inclusion, attainment and on improving the student experience at Warwick.

LAUNCH OF WARWICK AFRICA HUB
Monday 20 June, 1.30 - 6pm

PANEL DISCUSSIONS
 North-South collaborations, Warwick activities and student led initiatives

DISTINGUISHED AFRICA LECTURE
 Professor Ernest Aryeetay, Secretary-General of ARUA

www.warwick.ac.uk/global/partnerships/africa



Open invitation: Please join us for the launch of the Warwick Africa Hub on Monday 20 June 2022.

The Warwick Africa Hub will connect Warwick and African partners to jointly address global challenges and support the development of the region's leaders in research, education, and beyond. The Hub launch programme features an announcement by the Vice-Chancellor, three discussion panels which will explore Warwick's activities in Africa; student initiatives and opportunities; and North-South research and education collaborations. The inaugural Distinguished African Lecture "*Africa and the SDGs: What will it take to achieve them?*" will be given by Professor Ernest Aryeetay, Secretary-General of the African Research Universities Alliance (ARUA).

Register to attend the Africa Hub Launch and review the programme:
<https://warwick.ac.uk/global/partnerships/africa/africa-hub-launch/>

Staff Welcome back event

Saturday 16 July



With live entertainment, fairground rides, food and drink and much more, it promises to be a day to remember! Don't forget to register yourself and your family.

[Subscribe](#)[Past Issues](#)[Translate](#) ▼

Celebrates

[Psychology Postgraduates, including DCLin](#)

15:00 - 17:00 Sunday 10 July 2022

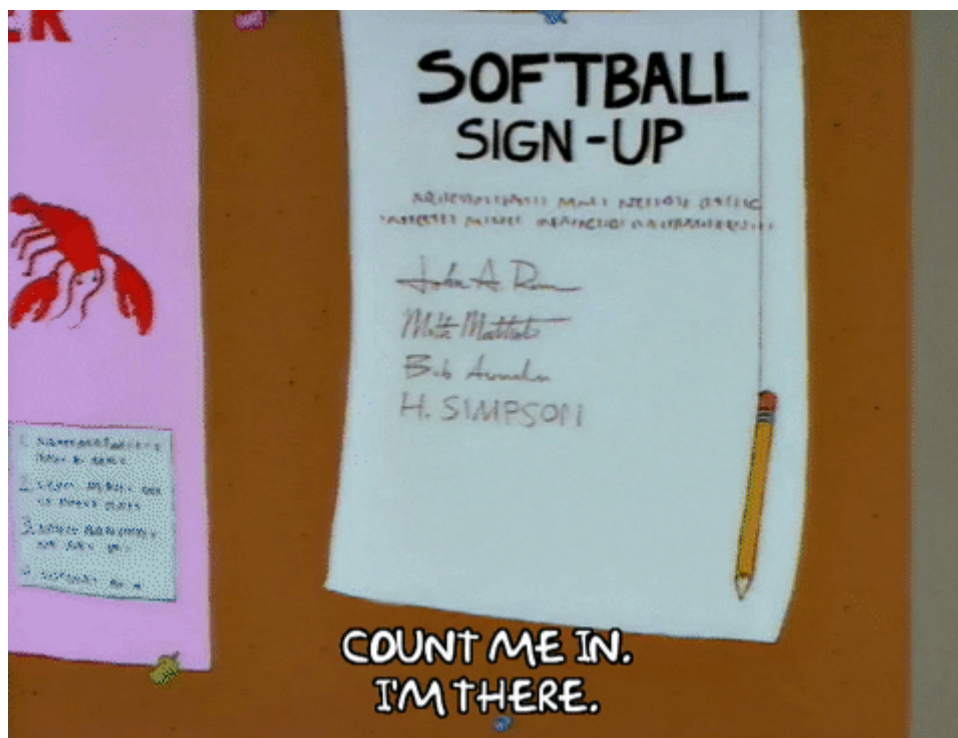
[Psychology Undergraduates](#)

15:00 - 17:00 Tuesday 12 July 2022

Degree Congregation:

11:00 - 13:00 Tuesday 26 July 2022

Postdocs and Postgraduates



The call is out for PGR SSLC (Staff Student Liaison Committee) representatives for 2022/23. Contact [Agne Raneberg](#) or [Zhihong Huang](#) or talk to your supervisor for more details.

WMS Postgraduate Research Symposium

Wednesday 22 June, Gibbet Hill

The WMS postgraduate Research symposium is just around the corner! The day will be taking place onsite with catering and refreshments provided throughout the day, so a great opportunity to catch up with colleagues from across the Faculty as well as to view all the excellent research being carried out by the WMS student body. You can view the programme for the day [here](#) and register your attendance [here](#). We look forward to seeing you on the day!

Archit Tamboli has started a social group for early-career staff members. I think the group would be helpful for a lot of local and international staff members who have moved from different cities/counties and want to meet other early career staff at Warwick. Here is the [link](#) to the group.

Opportunities for Early Career Researchers

There are several Early Career Research (ECR) focused events coming up. These include an [ideas generation workshop](#) to address critical change and sustainable challenges on 21 June, [two social sciences events](#) on Knowledge Transfer Partnerships and Commercialisation on 23 June and an ECR [health-related one-day workshop](#) on 7 July



Warwick Doctoral College @DC_Warwick · Jun 14

Come work with us! We're looking for Project Consultation Officers for our project 'Defining, Measuring and Supporting Success for PGRs from Diverse Backgrounds'.

Find out more about this PGR job opportunity here: bit.ly/3wP6wAx



Transferable skills courses for PhDs:

CH954 Science Communication a 3 day non-residential course, including one evening at the Coventry & Warwick BBC.

This module aims to help you to communicate your research findings accurately and concisely to different audiences. The main focus is on how to communicate in print, radio and TV to non-scientific audiences, but the skills will translate across to your research reports and presentations. The course will consist of a variety of seminars by experts in the field on for example, where news originates, how to construct a press release, critical analysis of the media, and how to respond to journalistic enquiries.

Wednesday 22 to Friday 24 June 2022 and is aimed primarily at Second year students.

[Subscribe](#)[Past Issues](#)[Translate](#) ▼

CH953 Team Working in a Research Environment is hybrid course where 4 sessions are on-line and one day face to face.

This 1st year module is designed to help you develop and enhance your team working and networking skills in a scientific research environment. The emphasis is on the role of teams within the research environment in order to create quality outputs. The ways that different personality types interact together will be explored and experienced in practice by solving novel problems in groups.

This course is designed to help participants:

- get to know each other well enough to begin the process of creating their own collaborative networks
- gain the confidence and skills to work in research teams that cross the boundaries of scientific disciplines
- gain sufficient self-knowledge that they can reflect on their personal impact on others and how this influences the dynamics of their work group
- feel confident about their ability to build valuable and positive relationships with their supervisors and colleagues

The course will run on **20, 22, 24, 28 and 30 June 2022** and is aimed at 1st Year students.



Warwick Doctoral College @DC_Warwick · 1h ...

Thank you to the participants of yesterday's PGR Matters event for the insightful discussion!

We have a few more sessions planned for this term - providing bite-sized information on different topics important to PGR life.

Find out more and sign up: bit.ly/3NoVfN3



Upcoming Events

PGR Matters

27 June, 1pm	PhD Networks
11 July, 1pm	Warwick Enterprise
date tbc	IAS Post-doc opportunities

ALT

[Subscribe](#)[Past Issues](#)[Translate](#) ▼DOCTORAL
COLLEGE

A PhD is challenging. Doing it in another language makes it more so. Check out the upcoming events from the [@warwickrssp](#) "PhD in a second language" series below.

Find the whole programme here: bit.ly/39o1IZO and sign-up via Skillsforge: bit.ly/3mNvLNq

'PhD in a Second Language' Series

- 16 June Presenting in Another Language
- 20 June Editing and Proofreading
- 22 June Focus Group: Presentation Practice
- 23 June Focus Group: Editing and Proofreading Practice
- 27 June Networking and Conferences
- 29 June Focus Group: Networking Practices

ALT

TEACHING



UG and PGT module convenors 2022/23

Are you Reading lists for 2022/23 in Talis Aspire and up-to-date? **Staff with existing modules:**

- Please **check the 2022/23 draft and make any edits.** <https://warwick.rl.talis.com/mylists> will display all reading lists you have been responsible for.
 - If your module reading list is not included here, contact readinglists.library@warwick.ac.uk.
 - If a module is not running in 2022/23, or it is no longer needed, please advise us via readinglists.library@warwick.ac.uk.
 - If you are no longer the lead for a module reading list,

[Subscribe](#)[Past Issues](#)[Translate](#) ▼[ac.uk](#).

- Please make sure to **publish the list** by clicking the 'Publish' button. Please make sure to publish by 31st July, if at all possible.

Further changes can be made to reading lists after publishing, if needed.

[Reading list Information and Guidelines](#)

Our subject librarian [Samantha Johnson](#) is always on hand with help and advice.

New to Moodle? Bookable support sessions

The Digital Learning Environment (DLE) team is now offering a series of bookable one-to-one **Moodle Support Sessions**. These are intended to be short appointments to discuss users' needs and requirements so that we can advise on appropriate tools in Moodle for the activity they want to create. These sessions are not for reporting errors or issues which should still be submitted via the Help Desk. Appointments are available in the first instance between 11am and 1pm on Tuesdays, 1pm and 3pm on Thursdays and 10am and 12pm on Fridays. [Sign up to appointments with DLE staff via MS Bookings](#)

For your students:

Careers Advice

[Siobhan Qadir](#), Careers Adviser

Summer Job Opportunities

On-campus summer events and job opportunities

This summer we welcome a number of large events to campus: Warwick Celebrates, Summer Graduation, Commonwealth Games and International Children's Games. Warwick Conferences, in conjunction with Unitemps, has opportunities to get involved in a wide variety of front and

details and feel free to share with family and friends!

To promote to your students: Term 3 Survey open

The Term 3 Survey is now live and we're calling on you, our staff community, to help promote it to our students. Find out more about the survey, download promotional assets and play your part in supporting us with evaluating learning and teaching at Warwick.



A key dates calendar has been created for UG students with key dates eg when marks are being released etc. This is the link; Important dates (warwick.ac.uk)

ITLR Student Co-creation Officer recruitment

Vacancies have been advertised to recruit two Student Co-Creation Officers, with the aim to recruit ideally one officer to consider the undergraduate experience and another officer to consider the postgraduate experience.

The advert is now live on the Unitemps website here: Unitemps - ITLR Student Co-creation Officer

Job advert closes: **Monday 27 June 2022**

Contact: Lucy Davis Student Engagement Officer

MSc/PgDip in Sleep Medicine at the University of Oxford

Here are some links where they can find out more information about the programme:

[Course Page](#)

[MSc](#)

[PgDip](#)

[Standalone modules](#)

RESEARCH

Research Impact Services

Inform **Research Impact Services (RIS)** if you are planning to submit a grant.

You can do so by contacting [Andrea Howard](#) directly. Alternatively, if it is for a grant that would bring more than £50k to Psychology, you can register your plans at the department site as these submissions are also sent to RIS.

Register Grant submission plans [here](#)

Connecting Culture GRP looking for new leads

The Connecting Cultures GRP is looking to appoint three new co-leads from across all Faculties. [Connecting Cultures GRP](#) is one of the most active GRPs in the University, with a fantastic track record of supporting new interdisciplinary research projects, public engagement and impact activities. To express interest in becoming a Connecting Cultures GRP Lead, please send an email to CulturesGRP@warwick.ac.uk by 17 June 2022. Please provide the information requested on [this page](#) when you submit your expression of interest.

Reproducibility, Replicability and Trust in Science 2022 conference

[Home](#) / [Our events](#) / [Conferences](#) / [Reproducibility, Replicability and Trust in Science](#)


Reproducibility, Replicability and Trust in Science

07–09 September 2022

Wellcome Genome Campus, UK

Registration and deadlines

Deadlines

Abstract and bursary
12 July 2022

Registration (In-person)
09 August 2022

Registration (Virtual)
31 August 2022

Register

Improving the robustness of scientific research

The overarching theme of this year's conference is to position the challenge of reproducibility and replicability as a behaviour-change problem that, when addressed, can lead to culture change within research. Discussions will include the challenges of ensuring reproducibility and replicability in large, multicentre research collaborations, training researchers in reproducibility, tools that support reproducibility and replicability, social and behavioural aspects of culture change and local challenges to reproducibility on a global scale.

This meeting brings together an international audience of researchers motivated to improve the robustness of scientific research. It will also include important stakeholder groups such as data and services providers, tool developers, publishers, institutions and funders that are developing policies relating to research reproducibility.

We aim to organise this meeting as a hybrid conference – with on-site or virtual attendance.

[Details here](#)

WIRE: Climate Change and Sustainability workshop

Tuesday 21 June 2022 - 09:30 – 15:15

Space 2, Radcliffe Conference Centre

WIRE is the newly formed Warwick Interdisciplinary Research Exchange.

It aims to bring together a range of researchers across the University, to explore and discover possibilities for future interdisciplinary collaborations.

Our contribution to solving the wicked problems of Climate Change and Sustainability starts by bringing together talented and open-minded researchers, who are daring enough to challenge the status quo of how we are addressing problems.

Addressing Climate Change and Sustainability challenges means moving ourselves out of the comfort zone of our disciplines and ways of thinking. **It means getting us to think the unthinkable.**

- Are you a researcher motivated to develop research skills and capabilities for innovative thinking needed to solve critical Climate Change and Sustainability challenges?
 - Are you stimulated by conversations with a wide range of researchers with diverse disciplinary background?
 - Are you seeking to enhance your research network and meet other enthusiastic and innovative researchers?
 - **The workshop discussions will be focused around 3 themes of research exploration:**
 - Low carbon technologies and sustainable futures
 - Pathways towards sustainability
 - Climate Action in context of sustainable development goals
- Book your place [here](#). If you have any questions about this workshop, do not hesitate to get in touch with us.

Event Link : <https://warwick.ac.uk/research/priorities/materials-innovative-manufacturing/wire/>

Warwick Cross Faculty Plastics Group - Research with Impact

As part of our efforts to achieve the Sustainable Developments Goals that have been set out by the United Nations, we must tackle the unprecedented levels of plastic waste that is generated by society. To this end, we are organising an event on '**Sustainability and Plastics**', aiming to bring the key Warwick researchers who are actively involved in sustainability research across the plastic value chains, from **polymer chemistry, processing and manufacturing, data science, environmental science, business management, social science and beyond**. Through this event, we hope to build a Warwick community on 'sustainable plastics', to identify key challenges, bridge the knowledge gaps, link our research strengths and explore joint solutions.

Who should attend:

We welcome colleagues from all three faculties who are interested in interdisciplinary research and would like to explore the topic of Plastics and Sustainability. This event is 'in person' and will have an external facilitator guiding the activities. For further details and to register for the event, please go to [Sustainability and Plastics \(warwick.ac.uk\)](#). The deadline for registration is 10 July.

Annual Summer Conference: EPSRC CDT in Modelling of Heterogeneous Systems (HetSys), 19-20 July 2022, Scarman House

The HetSys CDT is pleased to announce that registration for the HetSys Summer Conference 2022 is now open. This year's conference will focus on different areas of mathematical and computational modelling. Registration is free of charge, but places are limited so we are asking attendees to please register by Monday 4 July 2022. Please visit the [conference website](#) for a

Call for submissions for the 18th European Congress of Psychology

[18th European Congress Of Psychology 2023 - Brighton, UK \(ecp2023.eu\)](http://ecp2023.eu)

Interdisciplinary Workshop: Attention

14/15 September

Register by 14 July

London School of Economics and
Political Science and online

If you would like to participate, please
email AttentionWorkshop@gmail.com by
14th July 2022

The workshop aims to bring together diverse scholars working on attention, from neuroscientists and psychologists to philosophers and anthropologists.

The workshop will approach attention from three overlapping perspectives:

1. The nature of attention, its fundamental properties and its variability, with a focus on describing, contrasting and building bridges among diverse disciplinary, cultural and historical models and theories of attention.
2. The role of attention in social, economic and political systems, as well as its functioning in the development of subjectivities, beliefs, perceptions and behaviours.
3. Contemporary concerns about the effects that the potential manipulation of attention is assumed to have on mental health, wellbeing, education, and, more broadly, human agency. This theme is of particular relevance to members of civil-society and academics whose work Contemporary concerns about the effects that the potential manipulation of attention is assumed to have on mental health, wellbeing, education, and, more broadly, human agency. This theme is of particular relevance to members of civil-society and academics whose work has the potential for positive impact in society.



Relaunch of International funds

Global opportunities

The [International Partnership Fund \(IPF\)](#) aims to strengthen or initiate exchange between Warwick academics and their counterparts from leading international universities or institutes. We especially welcome proposals with partners in our priority regions (Africa, China, Europe & North America).

Applications are made through an [online application form](#). The deadline for applications is **Sunday 10th July 2022**.

Strategic partnership opportunities

To complement our IPF scheme, we also have specific funds to encourage collaboration with most of our strategic partners. These grants are jointly evaluated and funded with our partners:

- The [SJTU-Warwick Joint Seed Fund](#) enables academics to work on projects jointly with colleagues from Shanghai Jiao Tong University (SJTU), China and provides funding for projects lasting up to 12 months. Warwick academics can request 5,000 GBP from Warwick and SJTU academics can request 50,000 RMB from SJTU.

The deadline for this call is **Sunday 10th July 2022**. All funding for successful awards must be defrayed by 31st July 2023.

- The [Monash Warwick Alliance](#) offers several funding schemes to encourage research, teaching, and professional staff, as well as students, to collaborate with their counterparts in Monash, Australia. These

[Subscribe](#)[Past Issues](#)[Translate](#) ▼

- [The EUTOPIA Connected Research Communities](#) and the [Research Mobility Program](#) will allow you to establish links with colleagues in Vrije Universitet Brussel, CY Cergy Paris University, University of Gothenburg, University of Ljubljana, Pompeu-Fabra University-Barcelona. The aims are to: support research visits across EUTOPIA partner universities, foster research collaborations, allow the sharing of expertise and infrastructures, and the development of joint research activities.

The EUTOPIA Connected Research Communities call closes on **Friday 10th June 2022**. Use this space to add more details about your brand, a customer quote, or to talk about important news.

[Learn More](#)

Call for participants

Do you speak fluent Urdu or Punjabi? Can you read Urdu or Punjabi (Gurmukhi script)? Are you interested in qualitative and mixed methods research? If so and you have skills to conduct and review interviews you may be a good candidate for paid work on the OAT research study.

The OAT Study needs you!

We are carrying out a mixed methods study investigating the healthcare story of older adults with tuberculosis. This will include an interview. We are looking for Urdu or Punjabi speakers and readers to contribute to the project. The role will involve:

- Carrying out interviews in Urdu or Punjabi in line with the study protocol (Training will be provided.) This interview will be recorded so it can be transcribed.
- Reading the transcript of the interview in the original language to check for accuracy when compared to the recording.
- Reading a translation of the interview to check how well the translation represents the messages in the original interview (fidelity).

We are aiming to recruit up to 12 Urdu or Punjabi speakers in total. We estimate that each participant will generate 6 hours of work. Some interviews may be face to face and will involve travel across the West Midlands. The study will run from June 2022 to June 2023 (approximately).

Payment will be **£432 per participant**.

Please contact Farah on f.kidy@warwick.ac.uk for more details.

- call for staff and student participants

We would like to invite you to participate in our latest research project led by Professor Almuth McDowall. This has ethical approval and we invite you to read through this information to encourage your organisation to take part.

What is the purpose of the study?

The aim of the study is to investigate experience of neurodivergent students in the UK – what are their needs, how are they being met, and what can we learn from current practice.

Why is my organisation being invited?

The Association of Heads of Psychology Departments is funding this practice research and have agreed to circulate our call for participation. We would really like it if you could distribute the call beyond psychology.

What are the potential benefits when supporting this research?

We will summarise the findings in accessible format. Reasonable adjustments are understudied, so we hope that our project will have practical value.

How can students and staff take part?

For neurodivergent students (both formally and self-diagnosed), this project consists of two parts. We are conducting an online survey and online focus groups. They are welcome to take part in either or both.

For staff who support neurodivergent students (e.g. lecturers or disability support staff involved in designing and/or implementing reasonable adjustments), we would like to invite them to complete an online survey.

The links both to the survey and to the focus group sign-up, which include information sheets and informed consent forms, are provided below.

Online survey link: https://bbk.qualtrics.com/jfe/form/SV_9N5SmXCqpVR8irA

Online focus group sign-up link:
https://bbk.qualtrics.com/jfe/form/SV_6FjEAQWHObmB7Ke

How will we treat your data?

All data will be treated confidentially. During our analysis and reporting of the data, we will take the necessary steps to ensure that no individual or university can be identified from the data. The data collection will be led by Birkbeck University and has received ethical approval.

opportunity to take comfort breaks. This will be a safe environment with experienced facilitators.

HR | ED&I | Development | Wellbeing

Online Learning Resources

Webinar: How to Champion Yourself: Thursday 16 June, 13:00-14:00 (Teams)

Join a webinar on 'How to Champion Yourself', open to women working in academia and hosted by jobs.ac.uk in collaboration with Women-Space. Drawing on a wealth of experience, a panel of leaders in Higher Education will provide insight into how you can enhance your own visibility and support other women. Find out more [here](#).

Rainbow Ideas Café

Join a [Rainbow Ideas Café](#) on 28 June to discuss the findings of the anonymised Stonewall Workplace Equality Workplace Survey. This will be followed by a celebration event at Radcliffe following our Gold Award, to celebrate the progress made and reflect on the work still to be done.

Represent the Assembly on the University's Senate

Nominations are invited for two academic staff members, of which only one can be a professor, and one professional services staff member of the Assembly, to serve as a member of the Senate for three-year terms from 1 August 2022. [Find out more about the roles and election process.](#)



Personal Development Conversations

Conversation take place by 29 July.

Associated training:

[Warwick Principles and Social Inclusion](#),

inVISIBLE Research & Diversity Conference: Final attendance call

Register to attend the [inVISIBLE Research & Diversity Conference](#), taking place on 8,13 and 15 July and aimed at promoting the visibility of ethnic minorities in academia. Find out more and register by 24 June.

Exploring our culture: Focus groups

Thank you to everyone who shared experiences in our recent survey about staff culture and your sense of belonging and inclusion. We're inviting staff to take part in independently-run follow up discussion groups to explore staff culture in more detail – [see how to get involved](#).

Carers UK Lunch and Learn session for Warwick staff

10:00 - 11:00 Wednesday 29 June

The session will help you to:

- Gain information on what it means to be a working carer.
- Hear about what support is available for carers - both in and outside the workplace.
- Identify options to help you/your colleagues combine work and care.
- Understand the support and policies in place at University of Warwick
- Learn about how Employers for Carers, Carers UK and others can help

To register, please follow the link below: [Carers UK Lunch and Learn Session \(warwick.ac.uk\)](#)

Investing in technical talent

Read how Warwick, alongside collaborators across Midlands Innovation, has pledged to action the TALENT Commission recommendations to [strengthen the future of technical skills and staff in higher education and research](#).

NEON Summit: Wednesday 13 July 09:30-17:00 (University of Leeds)

Over thirty higher education institutions and organisations are part of the NEON Widening Participation in Post Graduate Study Working Group has over thirty

to share learning from across the sector, provide space to discuss, reflect and agree actions. They will also be sharing their postgraduate diversity strategy blueprint and inviting attendees to sign up to our pledge to work collectively on this agenda. For further details and to register, please visit [this website](#).

SUSTAINABILITY

Interested in finding more about Sustainability? Join the [Psychology GREEN TEAM](#)

ENVIRONMENTAL SUSTAINABILITY NEWSLETTER [HERE](#).

Along with some of the GRPs, the Institute for Global Sustainable Development (IGSD) is organising a one-day conference looking at the war in Ukraine through a sustainability lens. The conference can be joined in person or online, and is open to external participants. Please see below for information:

Russia's War in Ukraine and its Consequences for Sustainability

28.06.2022, Scarman Conference Centre, University of Warwick (online attendance also possible.)

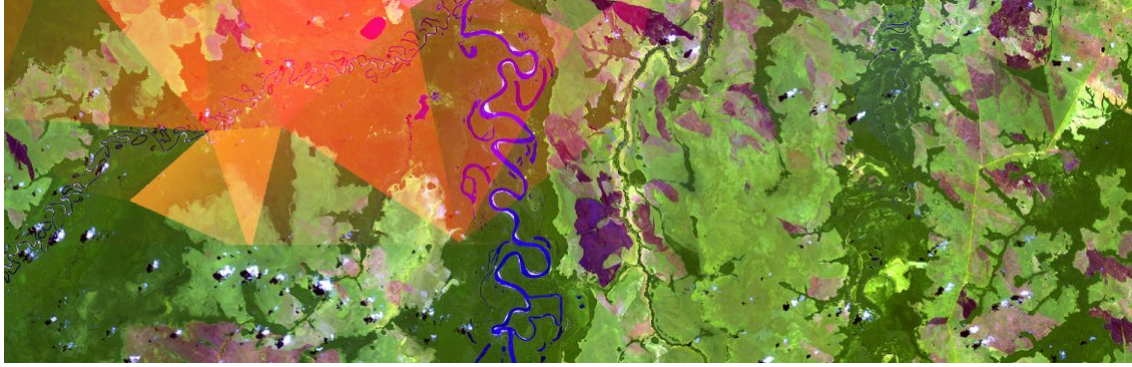
The Institute for Global Sustainable Development and Warwick's Global Research Priorities on Energy, Food and Sustainable Cities are organising this one-day conference to discuss the global consequences of Russia's War in Ukraine for the sustainability of the planet. The ongoing war unleashed by Russia in February 2022 does not only have devastating consequences for Ukraine, but also has a significant impact on the rest of the world.

This one-day conference will address specific challenges of sustainability, with planetary consequences, on the following issues:

- Energy and food security in the context of Russia's war: from cascading risks to global effects?
- Ruined cities and destroyed infrastructures: What are the consequences for global connectedness?
- The human dimension: What lessons for democratic sustainability?

There is no charge for attending this conference but you must register in advance. **Students are very welcome to attend.**

View the full agenda here: <https://warwick.ac.uk/fac/arts/schoolforcross-facultystudies/igsd/newsevents/events/ukraine-sustainability/>



Getting Creative with Sustainability.

Learn more about an exciting new initiative involving Warwick researchers and regional organisations working with local artists and creatives around the theme of sustainability.



Sustainability at Warwick @WarwickUniSust · 22h

...

Opt out of junk mail, by unsubscribing from specific companies you receive mail from, or through the Royal Mail/Mailing Preference Service! The average UK household receives around 650 pieces of junk mail a year.

ECO-SWITCHES
OPT OUT OF JUNK MAIL

- ✓ 17.5 billion pieces of junk mail are produced every year in the UK
- ✓ Opt out by emailing optout@royalmail.com with your name & address, or use the Mailing Preference Service to unsubscribe from junk mail



University of Warwick @warwickuni · 23h



🎯 🏌️ Staff and students had a fun time exploring a Labyrinth, playing inflatable games including volleyball, crazy golf and much more on campus today!

Come and play a variety of sports on inflatables with your friends this week, book now: warwick.ac.uk/warwick_presen...

@warwickSPORT



Something big is coming to @warwickuni in @warwickarts in July.

Sign up to our newsletter to be the first to find out more...

resonatefestival.co.uk



University of Warwick @warwickuni · 3h

Great to see travel journalist Simon Calder and Lonely Planet co-founder, Tony Wheeler, on campus yesterday remembering their student days and seeing how we've changed. Their tour included @warwickmed, Cryfield Halls of Residence, @WarwickArts and @WMGWarwick. #adventurousalumni



And Simon Calder spotted by your local reporter broadcasting outside the Humanities Building:

Subscribe

Past Issues

Translate ▼



Underneath the arch @CovCathedral @Covcultureshow @visit_coventry
@BBCCWR @churchofengland





*Copyright (C) *Department of Psychology: 2022* All rights reserved.*

Our mailing address is:

Want to change how you receive these emails?
You can [update your preferences](#) or [unsubscribe](#)

Grow your business with  **mailchimp**