

[View this email in your browser](#)



**23 June 2022**



## Psychology Bulletin

Email content to Catherine Johnstone

NEWS

Midlands Graduate School  
Doctoral Training Partnership

UKRI Economic and Social Research Council

Applications are now open for funding from the Midlands Graduate School ESRC DTP

Visit [www.mgsdtp.ac.uk](http://www.mgsdtp.ac.uk) for further details

## ESRC DTP PhD

[Subscribe](#)[Past Issues](#)[Translate](#) ▼

Supervised by [Professor Kim Wade](#)  
there is a fellowship available  
investigating Legal Decision-Making,  
Witness Evidence, and Credibility  
Assessments in Refugee Status  
Determinations

Closing date: 18 July 2022

[Apply here](#)

A graphic with the words "THANK YOU" in large, bold, multi-colored letters (red, orange, yellow, pink) on a light yellow background. A yellow arrow points to the right at the bottom right of the graphic.

Getting there ... so a (slightly) early

## Thank you!

To all those involved in marking,  
processing marks, exam boards, mit  
circs for getting us successfully to this  
point in the year!

It's insect week starting tomorrow - a week dedicated to celebrating and educating about the importance of insects! Visit The Royal Entomological Society's website to learn more and see what events you can get involved in.

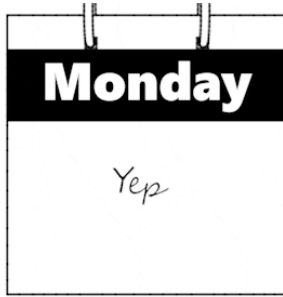


INFORMATION



West Midlands Bus On Demand is a Demand Responsive Transport (DRT) service, that meets you wherever you are! Book a ride on the West Midlands On Demand app by inserting a pick-up and drop-off location. You'll then be matched with other passengers heading in the same direction. Currently they are offering a number of promotions - use code "UOW22" on the app for two free

"Free Rides" section on the app.



## Departmental dates

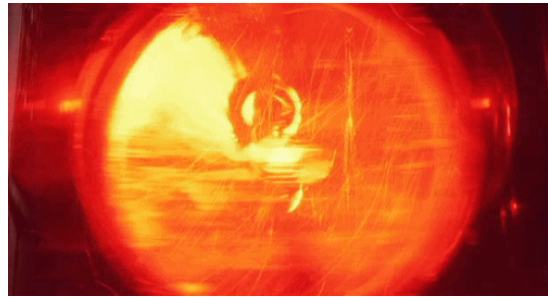
Want to check key departmental events and dates (including exam boards, away days and graduation)? Check out the Key Dates calendar:



## Forgotten your keys/pass? No-one around? Call Community Safety:

### Umbrella Security Protection

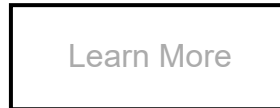
Umbrella Security Protection is available as additional protection for all devices, whether working on campus or from home. Find out what this means for you and the University.



## Emergency & Help

All Emergency calls on campus (fire, police, ambulance) **x 22222** or **02476 52222** need to go through Community Safety.

(save to your MOBILE!)



**24-hour Control Centre** (general enquiries)  
**internal extension x22083 or 024 7652 2083**

## Community Safety.





## Planning to travel?

See also information from Finance on recommended Travel Apps circulated 6-6-22 by email from HoD.Psychology@warwick.ac.uk in response to flight delay and travel situation.

### Funding travel:

**Academic Staff:** Discretionary account spend >£500 must be approved by HoD (can be done via [hod.psychology@warwick.ac.uk](mailto:hod.psychology@warwick.ac.uk) by email when Risk Assessment submitted).

**PhDs:** ensure that you have the funds available in your Postgraduate fund and get your supervisor to email permission for booking, which you should include when you request a purchase order.

### CONFERENCE Guidance:

- Conference bookings (fees) do not require FinRegs approval
- If accommodation is included as part of the conference package, FinRegs approval is not required
- If preferential rates are offered for conference attendees at the conference hotel or a nearby hotel, this can also be booked without FinRegs approval

**NEW Risk Assessment.** To ensure valid Business Insurance complete the **NEW Risk Assessment form** prior to booking travel and get signed off by emailing to [hod.psychology@warwick.ac.uk](mailto:hod.psychology@warwick.ac.uk)

**Travel bookings:** >£500 and/or outside Europe must be booked through Key Travel (email Catherine [c.j.johnstone@warwick.ac.uk](mailto:c.j.johnstone@warwick.ac.uk) with mobile phone number to get set up as a Key travel Booker) and advised for travel <£500 so assistance available if any cancellations/delays.

**Purchase Order for travel bookings** through Key Travel – request from Anita Burrows [a.burrows.1@warwick.ac.uk](mailto:a.burrows.1@warwick.ac.uk) (Mon, Tues, Thurs). Emergencies or covering Anita's leave: Catherine [c.j.johnstone@warwick.ac.uk](mailto:c.j.johnstone@warwick.ac.uk)

**Accommodation:** Ensure compliance with **Fin Regs 16 – Travel, Subsistence, Gifts and Hospitality** to ensure you can reclaim expenses (Air B&B not allowed unless there is a special case for applying for Fin Regs approval from Fin Regs Champion, Steve McGladrigan [s.mcgladrigan@warwick.ac.uk](mailto:s.mcgladrigan@warwick.ac.uk) )

*The University does NOT recommend using AirBnB properties for accommodation bookings – approval from FinRegs and Health & Safety must be sought if AirBnB is being considered, and there are additional procedures and checklists that must be followed.*

## Link via email - All Welcome!



## 8th Summer School - the Behavioural Science of Diversity & Inclusion

27 - 29 June

The summer school will bring together leading academics, researchers, and organisational leaders specialising in evidence-based approaches to advancing diversity, inclusivity, and belonging in workplaces, business organisations, and learning environments. This year's event will be run online and details of how to apply are outlined below.

[Subscribe](#)[Past Issues](#)[Translate](#) ▼[Sign up and Find out more here](#)

## GRP Conference on AI and Digital Technologies in the Workplace

8 July 2022



The conference will bring together PhD researchers from within and outside the University of Warwick to foster discussion and dissemination of research on the interaction of wellbeing in workplaces, digitalisation, and an extended use of artificial intelligence. The submissions are welcome from PhD researchers at any stages of their PhDs. ***Extended abstracts, chapters of thesis, working draft and research proposals related to the themes of the conference are all welcome.***

The conference will take place in-person at Warwick and we are happy to cover travel expenses for those that wish to travel to Warwick University by bus or train. (no registration fee).

[Learn More](#)



## Staff Welcome back event

Saturday 16 July

It's now less than one month until our Staff Welcome Back event on Saturday 16 July. Come along to enjoy our headline act, Rick Parfitt Jnr and the RPJ Band, as well as fairground rides, food and drink, and much more. [Make sure to register yourself and your family now!](#)

[Subscribe](#)[Past Issues](#)[Translate](#) ▼

## Warwick Celebrates

### [Psychology Postgraduates, including DCLin](#)

15:00 - 17:00 Sunday 10 July 2022

### [Psychology Undergraduates](#)

15:00 - 17:00 Tuesday 12 July 2022

## Psychology 2022 Degree Congregation:

11:00 - 13:00 Tuesday 26 July 2022

## RAWKUS



Rawkus collection is taking place on the 2nd and 3rd of July this year! As students move out of halls at the end of term 3, tonnes of unwanted food and kitchen equipment is left behind. Rawkus volunteers come together to collect any food that is in-date and edible and any unwanted items, that would otherwise be binned and end up in landfill. The food and goods collected are then distributed to local charities in Coventry and Leamington, including food banks. [Sign up](#) to get involved and help with collection.

## Litterpick

12:00 Wednesday 13 July

We are running a litterpick on campus, for any staff and students to get involved with, on the 13th July, starting at 12noon! This will be around an hour long - bags, gloves and pickers will be provided, but if you have your own please feel free to bring them. Not only does litterpicking keep our campus



---

like-minded people! [Sign up here.](#)

# Wellesbourne

## a campus for research excellence in Food and Environmental Science

Thursday 21 July

Join us for a guided walk on Thursday 21 July and delve into the TRIALS and tribulations of growing food for the future...

- Visit field trials and specialist outdoor research facilities within the SLS footprint.
- Visit areas of interest for further studies, including biodiversity (e.g. wildflower strips, tree sparrow boxes, hedge planting, bees, low maintenance areas).
- Explore opportunities for future teaching, student projects and cross collaborations.

Each guided walk is approximately 1.5 hours, followed by posters and the opportunity to mingle with our researchers whilst enjoying some vegetable snacks. Return transport from Gibbet Hill campus available.

[Register now to secure your place](#)

If you are interested in medical image perception and, especially, if you happen to be in the UK, think about coming to York for the **Medical Image Perception Society XIX Conference** at the **Novotel York Centre Hotel, York, UK.**

The conference is dedicated to bringing together people interested in human and computer perception of medical image information and related subjects such as, detection and discrimination of abnormalities, cognitive and psychophysical processes, perception errors, search patterns, human & ideal observer models, computer-based perception (CAD and CADx), impact of display & ergonomic factors on image perception & performance, role of image processing on image perception & performance, and assessment methodologies.

We have a very exciting lineup of talks that also includes the talk from our Keynote speaker Prof. Kenneth Young. (see the attached program). If you wish to attend please go to the following link: <http://mips.synchrosystems.com>

From the following links you can download the [MIPS Abstract Booklet](#); the [MIPS XIX Schedule](#) of the meeting and [MIPS Maps & Events](#) (Has information about travel to York, things to do in and around York and more information on our two optional social events).

Jeremy M Wolfe, PhD  
Professor of Ophthalmology & Radiology,  
Harvard Medical School

The call is out for PGR SSLC (Staff Student Liaison Committee) representatives for 2022/23. Contact [Agne Raneberg](#) or [Zhihong Huang](#) or talk to your supervisor for more details.

 **University of Warwick** @warwickuni · 57m

Would you like to have your research published? Reinvention is here to support you in your journey to become a published author!

Send an email at [reinventionjournal@warwick.ac.uk](mailto:reinventionjournal@warwick.ac.uk), or check out the website at [reinventionjournal.org](http://reinventionjournal.org).



**reinvention**  
AN INTERNATIONAL JOURNAL OF UNDERGRADUATE RESEARCH

Reinvention is an online peer-reviewed journal, dedicated to the publication of high-quality undergraduate student research. The journal welcomes academic articles from all disciplinary areas and all universities.

**@reinventionjournal**  
FOLLOW US ON SOCIAL MEDIA

MONASH University WARWICK

 **Warwick Doctoral College** @DC\_Warwick · 23h

PGR Summer Walk — On 07 July, we're inviting PGRs to join us on a summer walk from campus to Kenilworth. This is a great opportunity to meet your peers and get to know the area, and we're looking forward to seeing you there.

More info and sign-up here: [bit.ly/3xFiv2x](https://bit.ly/3xFiv2x)



**PGR Summer Walk to Kenilworth**

Thursday, 07 July, 2 pm

Please sign up via the Doctoral College website.

**Job reference:** BMH-019196

**Location:** Oxford Road, Manchester

**Closing date:** 27/06/2022

**Division:** Neuroscience & Experimental Psychology

**Contract Duration:** From 1 September 2022 until 31 August 2025

**School / Directorate:** School of Biological Sciences

We are inviting applications for a post-doctoral position on the SBE-UKRI funded project "Looked but failed to see" errors in human vision. This project is an international collaboration between Johan Hulleman (University of Manchester, Manchester, UK) and Jeremy Wolfe (Brigham & Women's Hospital, Boston, US).

This is an opportunity to work on a world-leading project that aims to understand the fundamental processes of visual search and the role they play in the visual search tasks of daily life.

More info about the project and this position: [johan.hulleman@manchester.ac.uk](mailto:johan.hulleman@manchester.ac.uk)

Website with job-listing: <https://www.jobs.manchester.ac.uk/displayjob.aspx?jobid=22634>

Direct link to application page: <https://www.jobs.manchester.ac.uk/Decide.aspx?jobid=22634>

Person-specification: <https://www.jobs.manchester.ac.uk/PreviewDocument.aspx?docid=66416&GUID=8d22b0cf-63ad-4462-81b3-f3eafbc55ebb&jobid=22634>

---

## TEACHING

### UG and PGT module convenors 2022/23

Are you Reading lists for 2022/23 in Talis Aspire and up-to-date? **Staff with existing modules:**

- Please check the **2022/23 draft and make any edits.**  
<https://warwick.rl.talis.com/mylists>

Subscribe

Past Issues

Translate ▼



- If your module reading list is not included here, contact [readinglists.library@warwick.ac.uk](mailto:readinglists.library@warwick.ac.uk).
- If a module is not running in 2022/23, or it is no longer needed, please advise us via [readinglists.library@warwick.ac.uk](mailto:readinglists.library@warwick.ac.uk).
- If you are no longer the lead for a module reading list, please advise us via [readinglists.library@warwick.ac.uk](mailto:readinglists.library@warwick.ac.uk).
- Please make sure to **publish the list** by clicking the 'Publish' button. Please make sure to publish by 31st July, if at all possible.

Further changes can be made to reading lists after publishing, if needed.

Reading list Information and Guidelines

Our subject librarian [Samantha Johnson](#) is always on hand with help and advice.

## New to Moodle? Bookable support sessions

The Digital Learning Environment (DLE) team is now offering a series of bookable one-to-one **Moodle Support Sessions**. These are intended to be short appointments to discuss users' needs and requirements so that we can advise on appropriate tools in Moodle for the activity they want to create. These sessions are not for reporting errors or issues which should still be submitted via the Help Desk. Appointments are available in the first instance between 11am and 1pm on Tuesdays, 1pm and 3pm on Thursdays and 10am and 12pm on Fridays. [Sign up to appointments with DLE staff via MS Bookings](#)

For your students:

## Careers Advice

[Siobhan Qadir](#), Careers Adviser



[Subscribe](#)[Past Issues](#)[Translate ▼](#)

WARWICK

Share your views and experiences in our 10-minute learning and teaching survey and enter our prize draw to be in with a chance to win a £200 Amazon voucher!

[warwick.ac.uk/dialogue/](http://warwick.ac.uk/dialogue/)



A key dates calendar has been created for UG students with key dates eg when marks are being released etc. This is the link; [Important dates \(warwick.ac.uk\)](http://warwick.ac.uk)

## RESEARCH

### Research Impact Services

Inform **Research Impact Services (RIS)** if you are planning to submit a grant.

You can do so by contacting [Andrea Howard](#) directly. Alternatively, if it is for a grant that would bring more than £50k to Psychology, you can register your plans at the department site as these submissions are also sent to RIS.

Register Grant submission plans [here](#)

### **BPS Cognitive Section Conference: Back to the lab: Back to reality**

Full details at <https://www.cogsec2022.com/>. The conference theme “Back to the lab: Back to reality” captures many things: getting back to the lab after Covid, conducting cognitive research that has

[Subscribe](#)[Past Issues](#)[Translate](#) ▼

Registrations and submissions are now open (submission deadline has been extended to 29 July 2022) and we welcome individual proposals and themed symposia as well as Work in Progress submissions. Some postgraduate bursaries are available. Register soon for the best rates for attendance and accommodation!



## 3RD INTERNATIONAL CONFERENCE ON DEVELOPING MATHEMATICAL RESILIENCE



At The Open University  
and simultaneously online

**1-2 JULY 2022**  
10:00 – 15:00 BST

This conference will showcase work on Mathematical Resilience from researchers, teachers and others, from across the world.

Mathematical resilience enables people to overcome mathematics anxiety and protect their mathematical well-being.

There will be presentations from those researching the affective domain of mathematics education in the broadest sense. The conference will offer an innovative and friendly environment for participants to showcase and discuss their research or emerging practice.

### Keynote speakers

*Presenting on Friday:*

Professor Alain Finkel  
Ecole Normale Supérieure Paris Saclay, France

Professor João Carmo  
Universidade Federal de São Carlos, Brasil

*Presenting on Saturday:*

Sue Johnston-Wilder, Associate Professor  
University of Warwick, UK

Dr Clare Lee  
The Open University, UK

Dr Gaye Williams  
Melbourne Graduate School of Education, Australia

### Registration

[tinyurl.com/MRCon22](https://tinyurl.com/MRCon22)

Face-to-face (lunch included):  
£20 for one day/ £30 for two days

Online: free

### Reach us at:

 @DMR\_Network

 @MathematicalResilience

 [mathematicalresiliencenetwork@gmail.com](mailto:mathematicalresiliencenetwork@gmail.com)

 [Mathematicalresilience.org](https://Mathematicalresilience.org)


[Home](#) / [Our events](#) / [Conferences](#) / [Reproducibility, Replicability and Trust in Science](#)


## Reproducibility, Replicability and Trust in Science

07–09 September 2022

Wellcome Genome Campus, UK

Registration and deadlines

Deadlines

Abstract and bursary  
12 July 2022

Registration (In-person)  
09 August 2022

Registration (Virtual)  
31 August 2022

Register

Improving the robustness of scientific research

The overarching theme of this year's conference is to position the challenge of reproducibility and replicability as a behaviour-change problem that, when addressed, can lead to culture change within research. Discussions will include the challenges of ensuring reproducibility and replicability in large, multicentre research collaborations, training researchers in reproducibility, tools that support reproducibility and replicability, social and behavioural aspects of culture change and local challenges to reproducibility on a global scale.

This meeting brings together an international audience of researchers motivated to improve the robustness of scientific research. It will also include important stakeholder groups such as data and services providers, tool developers, publishers, institutions and funders that are developing policies relating to research reproducibility.

We aim to organise this meeting as a hybrid conference – with on-site or virtual attendance.

[Details here](#)

## Interdisciplinary Workshop: Attention

14/15 September

Register by 14 July

London School of Economics and  
Political Science and online

The workshop aims to bring together diverse scholars working on attention, from neuroscientists and psychologists to philosophers and anthropologists.

The workshop will approach attention from three overlapping perspectives:

1. The nature of attention, its fundamental properties and its variability, with a focus on describing, contrasting and building bridges among diverse

Subscribe

Past Issues

Translate ▼

14th July 2022

- 2. The role of attention in social, economic and political systems, as well as its functioning in the development of subjectivities, beliefs, perceptions and behaviours.
- 3. Contemporary concerns about the effects that the potential manipulation of attention is assumed to have on mental health, wellbeing, education, and, more broadly, human agency. This theme is of particular relevance to members of civil-society and academics whose work Contemporary concerns about the effects that the potential manipulation of attention is assumed to have on mental health, wellbeing, education, and, more broadly, human agency. This theme is of particular relevance to members of civil-society and academics whose work has the potential for positive impact in society.

# HR | ED&I | Development | Wellbeing

## Equality, Diversity & Inclusion in Psychology.

### Rainbow Ideas Café

Join a Rainbow Ideas Café on 28 June to discuss the findings of the anonymised Stonewall Workplace Equality Workplace Survey. This will be followed by a celebration event at Radcliffe following our Gold Award, to celebrate the progress made and reflect on the work still to be done.



## Personal Development



Conversation take place by 29 July.

Associated training:

[Warwick Principles and Social Inclusion](#),

[Learn More](#)

## **inVISIBLE Research & Diversity Conference: Final attendance call**

Register to attend the [inVISIBLE Research & Diversity Conference](#), taking place on 8,13 and 15 July and aimed at promoting the visibility of ethnic minorities in academia. Find out more and register by 24 June.

## **Carers UK Lunch and Learn session for Warwick staff**

**10:00 - 11:00 Wednesday 29 June**

The session will help you to:

- Gain information on what it means to be a working carer.
- Hear about what support is available for carers - both in and outside the workplace.
- Identify options to help you/your colleagues combine work and care.
- Understand the support and policies in place at University of Warwick
- Learn about how Employers for Carers, Carers UK and others can help

To register, please follow the link below: [Carers UK Lunch and Learn Session \(warwick.ac.uk\)](#)

### **NEON Summit: Wednesday 13 July 09:30-17:00 (University of Leeds)**

Over thirty higher education institutions and organisations are part of the NEON Widening Participation in Post Graduate Study Working Group has over thirty education institutions and organisations working collaboratively to address the issue of barriers to PGT and PGR courses for some groups of students. This conference aims to share learning from across the sector, provide space to discuss, reflect and agree actions. They will also be sharing their postgraduate diversity strategy blueprint and

# SUSTAINABILITY

Interested in finding more about Sustainability? Join the [Psychology GREEN TEAM](#)

ENVIRONMENTAL SUSTAINABILITY June NEWSLETTER [HERE](#).

Some highlights:

## Sustainability blog

We have started a [sustainability blog](#) on our website where you can keep up to date with news and events and our HogBlog.

We would like for students and staff to get involved! We particularly want to hear about your experiences with sustainability, any challenges you faced and tips you could give to others. So, whether you're a Green Champion, part of a sustainable society on campus or just have a passion for the environment and you would like to contribute and write something for our blog email us [sustainability@warwick.ac.uk](mailto:sustainability@warwick.ac.uk).



## Warwick Sustainability Challenge

The [WIHEA ESD learning circle](#) is delighted to launch the 'Warwick Sustainability Challenge'. This is a project that has been developed in partnership with Economics, WMG, WBS, Warwick Enterprise, Estates, our Warwick Alumni, and Coventry City Council. The project will see staff and students across the whole University co-

sustainability in HE, linking the teaching and learning provision (Curriculum), to values and ways of working and studying on Campus, and the local Community by engaging with local people and partners (we are naming this 'CCC approach'). You can find more information about the project [here](#). Join the Challenge. Help us to shape a more sustainable world where to live!

## Russia's War in Ukraine and its Consequences for Sustainability

28.06.2022, Scarman Conference Centre, University of Warwick (online attendance also possible.)

The Institute for Global Sustainable Development and Warwick's Global Research Priorities on Energy, Food and Sustainable Cities are organising this one-day conference to discuss the global consequences of Russia's War in Ukraine for the sustainability of the planet. The ongoing war unleashed by Russia in February 2022 does not only have devastating consequences for Ukraine, but also has a significant impact on the rest of the world.

This one-day conference will address specific challenges of sustainability, with planetary consequences, on the following issues:

- Energy and food security in the context of Russia's war: from cascading risks to global effects?
- Ruined cities and destroyed infrastructures: What are the consequences for global connectedness?
- The human dimension: What lessons for democratic sustainability?

There is no charge for attending this conference but you must register in advance. **Students are very welcome to attend.**

View the full agenda here: <https://warwick.ac.uk/fac/arts/schoolforcross-facultystudies/igsd/newsevents/events/ukraine-sustainability/>

Register to attend: <https://warwick.ac.uk/research/priorities/energy-grp/war/registration-copy>.

## Wildflowers

We are currently developing the wildflower areas on campus, to provide food and habitat for pollinators and wildlife! Areas that are being rewilded include the large wildflower area by Spine route, which stretches all the way from Radcliffe to the Sports club, which were sown in 2021. We also are rewilding areas by Sherbourne residences and at Gibbet Hill. We'll be

[Subscribe](#)[Past Issues](#)[Translate ▼](#)

present.

### [Tell us about your travel choices and influences](#)

Complete the [Choose your way Warwick survey](#) to tell us more about your travel and what influences this – you'll inform the future of transport, and be entered into a prize draw to win 1 of 5 £50 LoveToShop e-vouchers (valid at stores including M&S, Argos, John Lewis and H&M). The survey is part of our work with Transport for West Midlands where we're trialling new approaches and technologies for getting to, from and around campus to help address the climate emergency and make moving around our campus and local area easier.

---

## Elsewhere:



### **SAFAR Film Festival comes to Warwick Arts Centre**

Warwick Arts Centre is celebrating the 10th anniversary of the SAFAR Film Festival with 5 special screenings from 4-8 July. Dedicated to cinema from the Arab world, join the festival to explore Arab cinema past, present and future. [Find out more and purchase your tickets.](#)



Subscribe

Past Issues

Translate

"For me, healing is multi-faceted. You can make progress in small ways every day, but then there are also longer-term changes." - Olugbemi.

For @RefugeeWeek we're sharing thoughts on healing from the artists involved in our Umoja exhibition, co-curated by @IniniLtd. #RefugeeWeek



ALT



University of Warwick @warwickuni · 44m

We have our #WarwickSpring 2022 winners! You can view them all here: bit.ly/3QJBITg. With over 700 entries, we want to say a big thank you to everyone who participated this year!

We look forward to seeing your submissions in our upcoming #WarwickAutumn competition.





*Copyright (C) \*Department of Psychology: 2022\* All rights reserved.*

Our mailing address is:

Want to change how you receive these emails?  
You can [update your preferences](#) or [unsubscribe](#)

Grow your business with  **mailchimp**