

Psychology Bulletin

2022/23 ISSUE 9



NEWS

CONGRATULATIONS TO JODY ROCHE ON 21 YEARS SERVICE AT WARWICK!

And thank you for over 7 years supporting the Undergraduate Programmes in Psychology!

@BPS_DARTP CONFERENCE

Jagjeet Jutley-Neilson presented collaborative work with other colleagues on Supporting Black Asian Minority Ethnic students learning and student experience at the @BPS_DARTP conference on 24 November

TODAY'S EXPERIENCE IMPACTS HOW WE FEEL ABOUT LAST NIGHT'S SLEEP QUALITY finds a study by Nicole Tang, Ptolemy Banks and Adam Sanborn.

EVENTS

13:30 Fri 2 Dec H0.44

Psychology Promotions Event

Reader Q&A

13:00 Weds 7 Dec - TEAMS

Language & Learning Seminar: Different types of violation expectation and their effects on syntactic structure learning Dr Giulia Bovolenta

13:00 Weds 7 Dec OC0.05

GTA: STAFF ROOM EVENT

13:00 Thurs 8 Dec TEAMS

Psychology Promotions Event

Professor Q&A

16:00 Thurs 8 Dec TEAMS

Online Guest Speaker: "Search Strategies in Motor Behaviour: Exploring the Perceptual-Motor Workspace"
Dr Matheus Maia Pacheco,
University of Porto

INFORMATION

EMERGENCY & HELP

All Emergency calls on campus (fire, police, ambulance) x 22222 or 02476 5 22222 go through Community Safety

COMMUNITY SAFETY

24-hour Control Centre (general enquiries) eg keys/pass internal x22083 or 024 76 52 2083

ESTATES

FOR ANY MAINTENANCE ISSUES eg radiators, **RAISE A CALL THROUGH THE ESTATES SERVICE CENTRE**

CLOSURE DATES:

Christmas 2022/New Year 2023

- Friday 23 December - Customary Day
- Monday 26 December - Statutory Day
- Tuesday 27 December - Statutory Day (Christmas Day - substitute day)
- Wednesday 28 December - Customary Day
- Thursday 29 December - Customary Day
- Friday 30 December - Customary Day
- Monday 2 January - Statutory Day (New Year's Day - substitute day)

IN THIS EDITION

Psychology Bulletin.....	1
CONGRATULATIONS TO JODY ROCHE ON 21 years service at warwick!.....	1
@bps_dartp CONFERENCE.....	1
Today's experience impacts how we feel about last night's sleep quality finds a study by Nicole Tang, Ptolemy Banks and Adam Sanborn.....	1
Psychology Promotions Event Reader Q&A.....	1
Language & Learning Seminar: Different types of violation expectation and their effects on syntactic structure learning Dr Giulia Bovolenta.....	1
GTA STAFF ROOM EVENT.....	1
Psychology Promotions Event Professor Q&A.....	1
EMERGENCY & HELP.....	1
ESTATES.....	1
CLOSURE DATES:.....	1
NEWS.....	3
EVENTS.....	3
Warwick PTC Staff Room.....	4
Philosophy Christmas Lecture.....	5
University Carol Service: Thursday 8 December, 14:30.....	5
Celebrate our Research Excellence: 14 December.....	5
Postdocs/Postgraduate.....	6
JDM Reading Group - Week 9.....	6
Call for EUTOPIA Science and Innovation Fellowship applications.....	6
Information about the CEBEX Winter School on Data and Behavioral Economics 2022, Prague.....	6
ECR Funding Call and PGR Networking Event.....	6
Warwick R User Group: December Meeting.....	6
FSEM PostDoc Social event.....	7
The Leverhulme Trust is inviting applications for doctoral training centers.....	7
Training resources.....	8
TRAINING and Development.....	8
Teaching updates.....	8
The next stage of rolling out the Warwick Assessment System through 22/23.....	8
Changes to student surveys and feedback opportunities in 22/23.....	8
Curriculum Development Toolkit.....	8
Information for your Undergraduate students.....	10
WEEKLY ROUND UP OF STUDENT COMMUNICATIONS:.....	10

Student Feedback Survey	10
RESEARCH.....	11
IMPACT	13
Call for Participants.....	15
COGNOSCENTI.....	15
Latest publications.....	16
SUSTAINABILITY	17
HR and SOCIAL INCLUSION.....	17
WELLBEING.....	18
WHAT'S HAPPENING ELSEWHERE?.....	18

NEWS

[Today's experience impacts how we feel about last night's sleep quality](#)

New research from the Department of Psychology suggests that how well we think we slept is not only determined throughout the night but also throughout the following day. [Learn more about the interesting results](#), published in the Journal of Sleep Research.

[Reminder: Help us improve the food and drink offer on campus](#)

There's still time to share your feedback with Warwick Retail about the mix of food and drink offered on campus. Take part in [the survey and share your thoughts](#) by 4 December to be in with the chance of winning one of three £25 Amazon vouchers.

[Deputy Chair of Faculty \(Research\) Announced](#)

Mark Williams, Professor at WMG, has been appointed as Deputy Chair of Faculty (Research) and will be commencing in the role on 3 January.

EVENTS

More events happening around the University on the web

[Calendar of Events](#)

Internal Seminars

Departmental Seminars

Language & Learning Seminars

Organiser:

Dr Mikhail Spektor

Catherine Johnstone

Mingtong Li



22/23 LANGUAGE & LEARNING SEMINARS

07/12/2022, 12pm-1pm	Giulia Bovolenta	Research associate, University of York
11/01/2023, 12pm-1pm	TBD	/
01/02/2023, 12pm-1pm	Joost Rommers	Lecturer, University of Aberdeen
15/03/2023, 12pm-1pm	Cornelia Ebert	Professor, Goethe University of Frankfurt

Warwick PTC Staff Room

7 Dec 17:00- Oculus 0.05

Warwick Postgraduate Teaching Community invites you to join The Staff Room on Wednesday 7th December 1-3 pm. In the first hour we'll be having a roundtable discussion about GTA pay and contracts, and we'd love to hear from you! If you've got any experiences you'd like to share, or would like to learn from other GTAs, please do come along.

In the second hour there'll be board games, snacks, and an opportunity to network with other GTAs (or celebrate reaching the end of Term 1!).

If you're interested in coming along, please let us know here:

https://warwick.ac.uk/fac/cross_fac/academic-development/pgteachers/networking/staffroom/registration/

WPTC presents

The Staff Room

Wednesday 7th December

1-3 pm

Oculus 0.05

1-2 pm: GTA pay/contracts discussion
2-3 pm: Board games, snacks and networking



**Psychology Guest
Speaker Seminar:**



**Dr Matheus Maia
Pacheco**
University of Porto

Host: Professor Thomas Hills

Search Strategies in Motor Behaviour:
Exploring the Perceptual-Motor
Workspace

16:00 Thursday 8 December

Philosophy Christmas Lecture

Weds 7 Dec 17:00 L3 Science Concourse

An author of nine books, Professor Quassim Cassam will deliver a talk titled '*Extremism: A Philosophical Analysis*' based on [his latest published book](#).

University Carol Service: Thursday 8 December, 14:30

All are welcome to the University Chaplaincy for a Carol Service on Thursday 8 December at 14:30. Warwick Chamber Choir will be taking part and there will be festive refreshments available afterwards. A digital screen slide is available [here](#).

Celebrate our Research Excellence: 14 December

All staff with an interest in research are welcome to [register to attend the Research Celebration Event](#) to celebrate the outstanding research and impact undertaken by Warwick staff and students and to highlight the amazing effort and achievements that underpin the University's success. See presentations and videos showcasing world-leading research and impact work and catch up with colleagues over drinks and nibbles.

Postdocs/Postgraduate

Director of Graduate Studies:

Dr Michaela Gummerum

Director of Postgraduate Taught Studies:

Dr Claudie Fox

Admin Support:

Thomas Freeman (PhDs)

[PGR Student website](#)



[PGSSLC REPS 2022/23](#)

[PGSSLC](#)

Lucas Castillo Marti (Chair)

Yuqi Ye (Secretary).

JDM Reading Group - Week 9

Friday 2 Dec 16.00-17.00 @ H1.04

A systematic investigation into the reliability of inter-temporal choice model parameters

T. Ballard, A. Luckman, & E. Konstantinidis

Find it here: <https://psyarxiv.com/mvk67/>

Call for EUTOPIA Science and Innovation Fellowship applications

Providing two-year funding for early career researchers, [apply for a chance to develop research](#) at two co-hosting EUTOPIA universities, and a placement a with an external partner institution. Materials engineering, data and intelligence, health, sustainability, and welfare and inclusion are the five areas of interest. [Deadline 15 December 2022.](#)

Information about the CEBEX Winter School on Data and Behavioral Economics 2022, Prague

The following 2 ECTS courses run during the weekend of 17–18 December, both offline and online:

- Crash Course in Behavioral Economics
- Crash Course in R

Find more details at www.cebex.org/events/cws

ECR Funding Call and PGR Networking Event

Thurs 8 Dec 17:00

PGRs and ECRs are invited to attend the launch of the PGR and ECR Network's fund for Early Careers Pilot Projects on Thursday 8 December, 17:00-19:00 (1.005, WBS). The event is designed for early career researchers who are developing research around Productivity and the Futures of Work. The PGR and ECR Network is offering researchers from any discipline up to £1500 to cover costs of an event, workshop, seminar or pilot research. During the evening there will be information about the network's aims and activities and announcement of the winners of the 2022 Essay competition, with time for drinks and networking. Please register for this event using [this link](#).

Warwick R User Group: December Meeting

Thurs 8 Dec 17:00 [The Graduate](#)

Speaker: Nicole Schwitter, Dept of Sociology Details [here](#).

FSEM PostDoc Social event

Weds 18 Jan 13:00 – 15.00 The Street, Zeeman

We would be delighted to see postdocs from across the Faculty, so that they can meet other colleagues and learn more about what is going on in the Faculty. This will be the first of what we hope will become a regular series of meetings. The next meeting will be a quiz, so use the January meeting to find quiz team mates!

Details and form to sign up [here](#).

The Leverhulme Trust is inviting applications for doctoral training centers

See email from Adam Sanborn 14-11-22 for details of competitive process.

The Leverhulme Trust's next call for Doctoral Scholarships is due to open in January 2023. This scheme provides funding for cohorts of up to 18 PhD studentships in a priority research area for the host institution. Further details about the scheme can be found at <https://www.leverhulme.ac.uk/leverhulme-doctoral-scholarships>

The Information Event for this call has been rescheduled and will now take place on **Wednesday 7th December 2022 at 14.30**. Please register to attend via: <https://warwick.ac.uk/services/ris/bj/news/leverhulme/>

Institute of Mathematics Data and Projects Officer Role

The Mathematics Institute have advertised for a Data and Projects Officer to work with them for 2-3 months. This part-time role (20 hours per week) could be suitable for a PGR student. For more information, please contact Rachel Millichap (r.v.millichap@warwick.ac.uk). Applications close Thursday 8 December at 16:00.

Applicants should have experience of administration, project management and working with large data sets and the postholder will support the development of specific projects in the Maths Institute.



Warwick Doctoral College @DC_Warwick · 22h

Upcoming deadline for researchers looking for paid public engagement & tutoring opportunities! Interested in getting teaching experience this Summer? @BrilliantClub is accepting applications until 18 December. Apply here: bit.ly/3M08vGR #PhDjobs #PhDchat #jointheclub



thebrilliantclub.org

Tutor Application Form - The Brilliant Club

Tutor application form - apply to become a tutor today!

TRAINING RESOURCES

[PGR IDG training opportunities](#)

IDG run courses on how to use and get the most out of various pieces of software and programs that you might need for their research. The sessions go from very basic concepts to more advanced techniques, and can be useful for all skill levels.

To see what sessions are available, when they run, and to sign up for one, please visit the IDG training catalogue at: <https://warwick.service-now.com/itstraining>.

TRAINING AND DEVELOPMENT

[Mental Health Awareness Training for staff](#)

Led by the Wellbeing Support Services. This is a 3-hour session which aims to increase awareness and understanding of mental health and build confidence in responding to others experiencing mental health difficulties.

Thursday 8 December 9.30 – 12.30 (in person)

To book <https://warwick.ac.uk/services/wss/staff-wellbeing/psychological/mentalhealthawarenesstrainingforstaff/>

Check out the [Leadership and Management Development](#) pages and the [Academic Development Centre](#) for the full programme of opportunities.

Nominate a colleague for the [Warwick Awards for Teaching Excellence 2023](#) – and there's a chance for both staff and students to [get involved as judges](#) too. Need inspiration? [See who won in 2022, the categories, and make a nomination](#).

TEACHING UPDATES

[The next stage of rolling out the Warwick Assessment System through 22/23](#)

Learn more about the key findings from phase 1 of launching the Warwick Assessment System, and what's coming next.

[Changes to student surveys and feedback opportunities in 22/23](#)

There's a brand new look for the campaigns encouraging students to take part in surveys and provide feedback on their university experience - including the National Student Survey, which will be officially launched in the week commencing 6th February 2023.

[Curriculum Development Toolkit](#)

Take another look at our new toolkit, launched in the last Education Bulletin, which makes it easier to design brilliant courses using the Dimensions of a Warwick Curriculum.

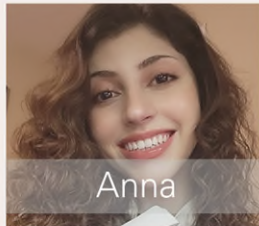


Meet our 22/23 BPS Student Ambassadors

Anna Alves
Inchara Athreya
Kezia Badu



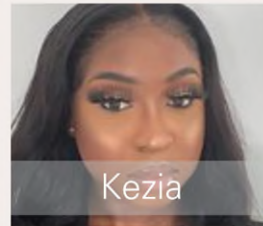
BPS Student Volunteer Ambassadors 22/23



Anna



Inchara



Kezia

Meet the team

Your ambassadors:

- Support fellow students who are entering into psychology education and training;
- Are a correspondent between the BPS, the student committee and your university;
- Carry out activities to get you involved!



Career resources from the BPS

<https://www.bps.org.uk/additional-careers-resources>

<https://bit.ly/BPScareers>



Information for your Undergraduate students

Director of Undergraduate Studies:

Dr Adrian von Mühlénen

Director of Student experience and Progression:

Dr Jagjeet Jutley-Neilson

Senior tutor/Admissions:

Dr Hester Duffy

Placements:

Dr Gitit-Kadar Satat

Study Abroad Coordinator:

Dr Olga Feher

Admin Support:

Emily Biggs (Academic Programmes Manger), Liz Farmer (1st years), Jody Roche (2nd and final years)

[Full information on People & Roles](#)

Useful resources:

[UG Handbook 2022/23](#)

[Student Research Opportunities](#)
[Careers for Psychology Moodle Page](#)
[Undergraduate Skills programme](#)
[Placements, Internships and Work Experience](#)
[Study Abroad \(outgoing students\)](#)
[Study Abroad - incoming / visiting student information](#)

[UG SSLC](#)



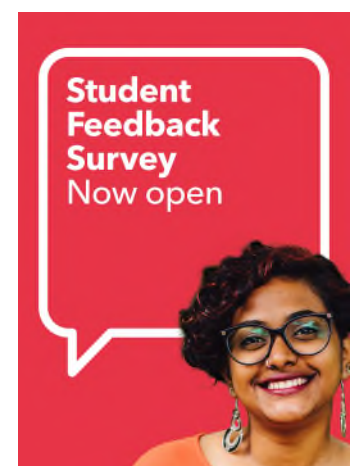
WEEKLY ROUND UP OF [STUDENT COMMUNICATIONS](#):

Thursday – Teaching, Learning, Research Week 8 [UG](#), [PGT](#), [PGR](#) - 24 November

Monday – Student experience Week 8 [UG/PGT](#), [PGR](#) - 22 November

Student Feedback Survey

The Student Feedback Survey is open now and until Sunday 4 December. The survey is a joint University and Students' Union (SU) Survey, replacing the SU PULSE and University Termly Surveys. The survey will run in Term 1 and Term 3, and will include questions about student experience during the term. Info [here](#).



RESEARCH

For current Internal funding Opportunities, see Research & Impact [website](#).

- The **Research Development Fund** (Strategic Awards) is open for bids for projects that will take place between 01 August 2022 and 31 July 2023.
- The **Humanities Research Fund (HRF)**[Link opens in a new window](#) is available to Faculty of Arts staff for research-related expenses and conference travel. In certain circumstances, research students in the Faculty of Arts are also eligible to apply.
- **EPSRC Impact Acceleration Account (IAA)**: A scheme to help pioneering scientists and engineers create successful businesses from their research, improve industrial collaboration and foster greater entrepreneurship
- **Warwick-Wellcome Translational Partnership** offers **Translation and Innovation Grants** to provide project-focused pump priming awards to support the movement of research ideas along the translational development spectrum and/or move to the next technology readiness level. Applications to buy out UHCW clinician's time for a translational project would also be welcome. It is anticipated that 4-5 awards will be made.
- **Breaking Translational Barriers Awards** provide smaller awards of up to £10,000 to access bespoke external expertise and advice on the potential of the idea or technology and overcome well-defined barriers, for example engaging end users and networks, commissioning market research analyses and exploring routes to market to progress their research along the translational pipeline. The Breaking Translational Barriers Awards will not fund Warwick staff time. Contact Wellcome-Translation@warwick.ac.uk to find out more.

For current funding Opportunities, see Research & Impact [website](#).

Current External Funding Opportunities

- **Research Professional** - Funding resource where you can search for and save funding opportunities as well as set-up funding alerts. View saved [funding opportunities](#)
- [Browse funding opportunities](#) and news from Research Councils UK and other key funders.
- **Horizon 2020** - find out about EU funding opportunities for your research or innovation project.
- **Researchers with caring responsibilities: [Research Council support](#)**

Discover more exciting and transformative research

Over the coming months, the new seminar series InReach10X @IAS will present some of the most exciting and transformative research in topics spanning the natural sciences, social sciences, humanities, and medicine. [View the programme and register your interest.](#)

Apply for funding in translational research

The Warwick-Wellcome Translational Fellowship Awards support the translation of research findings into improvements in human health. Funding is available for a dedicated researcher to engage with translational research activities and take forward opportunities. [Find out if you're eligible and apply by 15 December.](#)

RESEARCHER DEVELOPMENT PROGRAMME

When you have chance, please also check the refreshed RD webpages which provides multiple resources to support your Researcher Development (warwick.ac.uk) and be aware that we release all workshop information via our RDO Teams site <https://tinyurl.com/Researcher-Development-Online>. We can be found on Twitter @warwickrssp.



Further information about the PG Cert in Transferable Skills in Science (PGCTSS) Programme please see our [website](#). Do not forget the Doctoral Skills Modules 1, 2 and 3 are all available in SkillsForge under the Doctoral Skills Tab.

Course Code	Course Name	Dates	Time	Aimed at	Booking via SkillsForge
CH973	Research Ethics and Practice	13 th Dec 2022 Presentation is on Wednesday 11 th January 2023	10.00 hrs to 16.30 hrs	All Years	CH973
CH961	Introduction to Teaching for Postgraduates in the Sciences	Open all year	As per individual courses	All years	CH961

EPSRC CDT Call & UKRI AI CDT Call 2023 Outline stage

The University is inviting applications to the internal selection process for the [EPSRC CDT Call](#) and [UKRI AI CDT Call](#) 2023 Outline stage. See email from Adam Sanborn 22-11-22.

Sustainable Cities: Funding opportunity

Apply for the Sustainable Cities Global Research Priority Small Grants Scheme, dedicated to supporting those at Warwick working in and with urban research. [Find out more about the themes](#) that underlie the GRP's work and apply before 31 January 2023.

RESEARCH ENGLAND CALL will open a call for a centre grant by the end of 2022 <<https://www.ukri.org/blog/get-ready-for-expanding-excellence-in-england-e3-round-2/>>. This is an once-in-five-years opportunity, and there is no guarantee that the scheme will come back. In the last round, the budget for accepted projects were around 5-7 million pounds. In the last round Loughborough got this grant for mathematical cognition, and then they managed to follow it up with an ESRC centre <<https://www.lboro.ac.uk/news-events/news/2021/november/centre-for-early-mathematics-learning/>>.

Successful applications in Round 1 can be seen [here](#) Professor Sotaro Kita. Keep Professor Adam Sanborn informed of intentions.

IMPACT

Please direct enquires to the Research Impact Manager Rob Hollingworth
(Robert.Hollingworth@warwick.ac.uk)

MRC IAA application

The University of Warwick's second MRC IAA (Impact Acceleration Account) call is now open for applications Deadline: 18 January 2023

The primary aim of this IAA is to speed up the transition from discovery research to translation. This will ordinarily be achieved through clinical or industrial translation, or spin-out formation.

All awards follow a two-stage structured approach:

- **Stage 1:** Market research and value proposition development, working with Warwick Innovations. This releases £5,000 to enable researcher buy-out.
- **Stage 2:** Pitch a milestone-based project of up to £45,000 (direct costs) based on learnings from Stage 1.

Applications for stage 1 must: (i) be based on mature, validated technology under MRC remit; (ii) address a specific unmet need which your current (not future) technology can satisfy better than competing therapies; and (iii) outline a clear plan for engaging with end-users, clinicians and industry around this unmet need.

The MRC IAA webpage, stage 1 application form and eligibility criteria can be found here: <https://warwick.ac.uk/fac/sci/med/mrciaa/>.

We wish to highlight that successful projects should provide confidence in the concept, and not undertake underpinning research or establish proof of concept, for which other funds are available.

Please direct any questions or queries to mrc-iaa@warwick.ac.uk. Stage 1 applications need to be submitted to this resource account by the deadline date with your Head of Department copied in. All applications must fall under MRC remit.

Warwick-Wellcome funding

The University of Warwick has secured an extension to the Warwick-Wellcome Translational Partnership that supports translation of research findings into improvements in human health.

We are now requesting applications for Translational Fellowship awards to start in early 2023. Translational Fellowship Awards will support a dedicated researcher to work towards translation of their own work, or that of their wider research team. **Funding will cover 18 to 20 months of researcher time** (dependent on start date), as well as project consumables and support for translational activities. It is anticipated that three Fellowships will be awarded.

Details of previous fellows supported by the scheme can be found on the [Wellcome Translational Partnership website](#).

Eligibility Applicant Fellows – Would normally be an Early Career Researcher or Post-Doctoral Researcher based at the University of Warwick. Applicants will have a passion for translation of academic research and experience relevant to the proposed project. Successful applicants will receive training on commercialisation of academic research and be expected to take part in Partnership events and report on project and career progress.

Please note that successful fellowships are expected to commence no later than 1 March 2023.

Academic Leads - Should normally be a University academic employee, or be the holder of a personal research fellowship awarded competitively, with a contract lasting the duration of the project. UHCW-employed clinicians are also eligible, and applications must provide an accompanying letter from the Clinical Director confirming support for the project.

How to Apply

Applications must be completed using the [Warwick-Wellcome Translational Partnership application form](#) and submitted to Wellcome-Translation@warwick.ac.uk by **5pm 15th December** along with a two-page CV for the Applicant Fellow.

For application form and guidance please visit the [Warwick-Wellcome Partnership application webpage](#).

Further information on previous Partnership activities and award holders can be found on the [Wellcome Translational Partnership](#) webpages (staff login is required).

Please direct enquires to the Research Impact Manager Rob Hollingworth (Robert.Hollingworth@warwick.ac.uk)

Call for Participants

Psychology teaching community forum

Can you help us create an **Inclusive practice toolkit**?

We would like to include research publications or content that is ethnically diverse i.e. not research that is focused on Western, educated, industrialized, rich and democratic (WEIRD) societies ([click here for more info on WEIRD research](#)).

If you have any content that fits the above criteria from your modules or you know of any, please submit it to the toolkit. We will credit your contribution on the too.

If you would like to **learn more** about the project and **participate**, please click here:

https://warwick.co1.qualtrics.com/jfe/form/SV_bPmqIXpFEL0veqa

Please have a look at what we have so far.

<https://warwick.ac.uk/fac/sci/psych/bame/>

Jag Jutley-Neilson

COGNOSCENTI

The Psychology magazine (Cognoscenti) is currently looking for student contributors who would like to write an article with a 500-700 word count. The magazine doesn't mind what you write about as long as it links with psychology and does have sufficient scientific evidence around it.

Finally, if you do not want to write an article for the magazine but have a study that you have published or is currently on-going that you want to be in the magazine, please email us (email below).

If you have any further questions please either email me (earl.woolf@warwick.ac.uk) or our Team Coordinator and Head Editor Muskan Bhagnani (Muskan.Bharat-Bhagnani@warwick.ac.uk)



Latest publications

Arboreal origin of consonants and thus, ultimately, speech

Lameira, Adriano R. (2022) Arboreal origin of consonants and thus, ultimately, speech. Trends in Cognitive Sciences . doi:10.1016/j.tics.2022.11.012

Emotional problems and peer victimization in adolescents born very preterm and full-term : role of self-control skills in childhood

Bilgin, Ayten, Wolke, Dieter, Trower, Hayley, Baumann, Nicole, Räikkönen, Katri, Heinonen, Kati, Kajantie, Eero, Schnitzlein, Daniel and Lemola, Sakari (2022) Emotional problems and peer victimization in adolescents born very preterm and full-term : role of self-control skills in childhood. Development and Psychopathology . pp. 1-10.
doi:10.1017/S0954579422001201 (In Press)

Bullying in adolescence : how do emotional traits distinguish those involved?

Guy, Alexa, Lee, Kirsty and Wolke, Dieter (2022) Bullying in adolescence : how do emotional traits distinguish those involved? Current Psychology . doi:10.1007/s12144-022-03956-5 (In Press)

Leaving child and adolescent mental health services in the MILESTONE cohort : a longitudinal cohort study on young people's mental health indicators, care pathways, and outcomes in Europe

MILESTONE consortium (Including: Gerritsen, Suzanne E., van Bodegom, Larissa S., Overbeek, Mathilde M., Maras, Athanasios, Verhulst, Frank C., Wolke, Dieter, Rizopoulos, Dimitris, de Girolamo, Giovanni, Franić, Tomislav, Madan, Jason et al. <#>). (2022) Leaving child and adolescent mental health services in the MILESTONE cohort : a longitudinal cohort study on young people's mental health indicators, care pathways, and outcomes in Europe. The Lancet Psychiatry, 9 (12). pp. 944-956. doi:10.1016/S2215-0366(22)00310-8

SUSTAINABILITY

Find out about all things Environmental on campus in the November “Ways to Sustainable” bulletin [here](#).

[From Hedgelaying to Hedgehogs: Wildlife enhancing projects on campus](#)

Read more about Warwick’s commitment to protecting, creating, and enhancing habitats for wildlife. Take a look at the different [projects undertaken throughout the year](#) and see how to get involved in tree planting.



Warwick Crop Centre @WarwickCrop · 21h

...

Join us for a Christmas journey to discover the fascinating world of the Brussels sprout @warwickuni Christmas Lectures on 8 December warwickartscentre.co.uk/whats-on/4g-wa...



HR and SOCIAL INCLUSION

Do you want to recognize a colleague who goes above and beyond? Have a look at the:

[Warwick Wonders and Warwick Wows](#) – new regular awards from Stuart Croft, Vice-Chancellor, to help celebrate our people and achievements as a University. We’ll be sharing our first winners this month, and celebrating them at the [Festive Drinks](#) on 19 December.

Researchers with caring responsibilities: [Research Council support](#)

[Warwick School Visits](#)

For those of you who receive requests from schools for large numbers of students, Warwick School Visits exists for departments to sign post school groups who want to bring large numbers of students to campus for a visit. These are open to any schools, years 11-13 and can be booked on to via this website: <https://warwick.ac.uk/study/undergraduate/schools/events>. Please feel free to sign post any schools you engage with to this resource. Thank you.

[Support for disabilities and health conditions](#)

Ahead of International Day of Persons with Disabilities on 3 December, here’s a reminder about the support available for workplace adjustments at Warwick, through the My Adjustment Passport tool. [Hear from people who have requested adjustments at Warwick](#) about their experiences.

WELLBEING

Wellbeing and Support Services

[Support for students](#)

[Support for Staff](#)

University of Sanctuary Introductory training for staff and students

Warwick holds a University of Sanctuary award, recognising good practice welcoming people seeking sanctuary through facilitated access to higher education, supporting local refugee communities, and taking an active role in learning about the issues and obstacles faced by this group in pursuing higher education. You can read more about [University of Sanctuary on our webpage](#) here, and **there are also things you can do to support a culture of safety, solidarity, and empowerment for people seeking sanctuary – including completing our new training module!**

One of the most valuable things we can do all do is educate ourselves. Do you know the difference between an asylum seeker and a refugee? Are you familiar with the UK asylum process? Do you know why people migrate? Our introductory training module is designed to assist staff and students at Warwick to develop insights into the life of asylum seeker and refugee students in the UK. This presentation will take you on an interactive learning journey allowing you to select and explore information a section at a time.

You can [complete the training here](#), we hope you will find it useful.

WHAT'S HAPPENING ELSEWHERE?



Warwick Christmas Lectures 2022



Scientists from the University of Warwick leave their labs to entertain and amaze audiences with experiments and research that makes us scratch our heads and shout from our seats.

Pull on your Christmas jumper, bring your family members or friends and join us for some mind-boggling science and explosive experiments!

1 & 8 December 7pm at Warwick Arts Centre.

Expect audience participation, explosions, discovery and wonder!

[Find out more](#)

University of Warwick Carol Service

Thursday 8 December

4:30pm

The Chaplaincy

*With the Chamber Choir
and festive refreshments*

Everyone is welcome, so please come and join us



Follow us on Instagram

and Twitter @warkpsych