

Psychology Bulletin

9 December 2022
22/23 Issue 10

The latest news, events and announcements

INSIDE

New finds this week

Read about work on National Resilience in Ukraine following the 2022 Russian Invasion

Events

16:00 Fri 9 Dec UG Christmas Crafts and Pizza in Student Common Room

Festive lunch

Lovely to see so many at the festive lunch. Great to catch up and congratulations to the game winners!



Limited support staff availability on campus from w/c Mon 12 December - Fri 6 January

For keys and urgent Estates issues try contacting Andrew Barnacle on 0734 1072464

Estates:

Use the Service Desk online for any maintenance issues:

[Estates Helpdesk](#)

Phone: +44 (0)24 765 75100

Email: Estates.Servicedesk@warwick.ac.uk

Out of hours: +44 (0)24 765 22083

IT PROBLEMS:

Contact the IT Helpdesk: [Online help](#)

Email: Helpdesk@warwick.ac.uk
[024 76573737](tel:02476573737) 9:00 to 17:00 Monday to Friday.

Emergencies

For emergencies, please call the Security Team, available 24/7, 365 days a

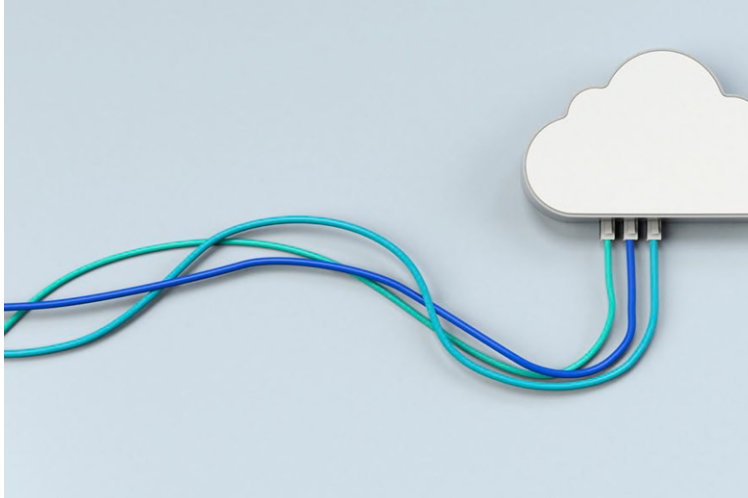
year: **(02476 5) 22222**

The University will be closed from Friday 23 December to Monday 2 January 2023 inclusive.

Christmas 2022/ New Year 2023

- Friday 23 December - Customary Day
- Monday 26 December - Statutory Day
- Tuesday 27 December - Statutory Day (Christmas Day - substitute day)
 - Wednesday 28 December - Customary Day
 - Thursday 29 December - Customary Day
 - Friday 30 December - Customary Day
- Monday 2 January - Statutory Day (New Year's Day - substitute day)

Events



Psychology Guest Seminars 2023

16:00 Thursday 12 January 2023 H0.44

Professor Michelle Yik (title tba)

The Hong Kong University of Science and Technology

Host: Professor Anu Realo

13:00 Thursday 12 January 2023 H0.44

Dr Adam Harris (title tba)

UCL

Host: Dr Emmanouil Konstantinidis

16:00 Thursday 16 February 2023 OC0.02

Dr John Pickering (title tba)

UOW

Host: Professor Derrick Watson

16:00 Thursday 2 March 2023 H0.44

Professor Martin Pickering (title tba)

University of Edinburgh

Host: Dr Chiara Gambi

13:00 Friday 17 March 2023 H0.44

Dr Konstantinos Tsetsos (title tba)

University of Bristol

Host: Dr Emmanouil Konstantinidis

Dates still available:

Wk3	16:00		Thursday	26	January
Wk4	16:00	either	Thursday	2	February
Wk4	13:00	or	Friday	3	February
Wk5	16:00	either	Thursday	9	February
Wk5	13:00	or	Friday	10	February
Wk6	16:00	either	Thursday	16	February

WIE Networking Cafe: Engagement

12:30 Thursday 15 December

Language and Learning Seminars
T2

12:00 Weds 1 February 2023 **Joost Rommers**
Lecturer, University of Aberdeen

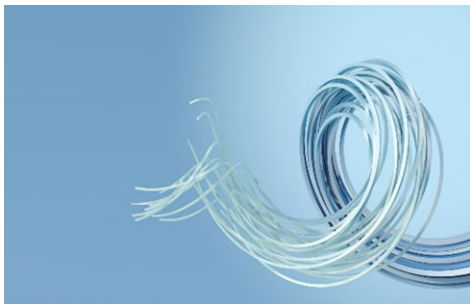
12:00 Weds 15 March 2023 **Professor Cornelia Ebert, Goethe University of Frankfurt**

Dates for your diary Term 2:



Contact [Catherine Johnstone](#) to reserve a date.

Wk1	16:00		Thursday	27	April
Wk1	13:00		Friday	28	April
Wk2	16:00	or	Thursday	4	April
Wk2	13:00	or	Friday	5	May
Wk3	16:00	either	Thursday	11	May
Wk3	13:00	or	Friday	12	May



Celebrate our Research Excellence: 14 December

All staff with an interest in research are welcome to [register to attend the Research Celebration Event](#) to celebrate the outstanding research and impact undertaken by Warwick staff and students and to highlight the amazing effort and achievements that underpin the University's success. See presentations and videos showcasing world-leading research and impact work and catch up with colleagues over drinks and nibbles.

Your student newsletter (Thursday Week 10) [UG/PGT/PGR](#) - 8 December

Your student newsletter (Monday Week 10) [UG/PGT/PGR](#) - 5 December

JDM Reading Group - Week 10

Friday 9 Dec 16.00-17.00 @ H1.04

Counterfactual thinking as a prebunking strategy to contrast misinformation on COVID-19
M. Bertolotti, P. Catellani

Information about the CEBEX Winter School on Data and Behavioral Economics 2022, Prague

The **following 2 ECTS courses run during the weekend of 17-18 December, both offline and online:**
Crash Course in Behavioral Economics and Crash Course in R

Find more details at www.cebex.org/events/cws

[FSEM PostDoc Social event](#)

Weds 18 Jan 13:00 – 15.00 The Street, Zeeman

We would be delighted to see postdocs from across the Faculty, so that they can meet other colleagues and learn more about what is going on in the Faculty. This will be the first of what we hope will become a regular series of meetings. The next meeting will be a quiz, so use the January meeting to find quiz team mates!

Details and form to sign up [here](#).

Nominate a colleague for the **Warwick Awards for Teaching Excellence 2023** - and there's a chance for both staff and students to [get involved as judges](#) too. Need inspiration? [See who won in 2022, the categories, and make a nomination](#).

Funding opportunities

Welcome to James Barrett-Evans who joins the R&IS team

From January the team aim to have a rota of 2 members of the team based in Psychology in **H0.38 on Wednesdays** so please pop in with any queries.

Research Strategy and Development Manager - Claire Edwards
Research Support Manager - Andrea Howard
Research Development Officer - Alex Glazer
Research Support Officer - Bhavana Sharma
Research Support Officer - James Barrett-Evans
Research Support Officer - Parminder Matharu (0.5 FTE)

Research England will open a call for a centre grant by the end of 2022

<<https://www.ukri.org/blog/get-ready-for-expanding-excellence-in-england-e3-round-2/>>. This is a once-in-five-years opportunity, and there is no guarantee that the scheme will come back. In the last round, the budget for accepted projects were around 5-7 million pounds. In the last round Loughborough got this grant for mathematical cognition, and then they managed to follow it up with an ESRC centre <<https://www.lboro.ac.uk/news-events/news/2021/november/centre-for-early-mathematics-learning/>>.

Successful applications in Round 1 can be seen here <<https://www.ukri.org/what-we-offer/what-we-have-funded/research-england/expanding-excellence-in-england-e3/>>. Details from Prof Sotaro Kita

Funding opportunities for researchers, technicians and industrial scientists

The BBSRC Flexible Talent Mobility Account (FTMA4) is currently accepting applications for Industrial Secondments and FTMA Fellowships. All activities must take place between 1 January and 31 March and applications will close once all the funding has been allocated.

Energy GRP: Funding opportunity

Apply for the Energy Global Research Priority Small Grants Scheme to fund energy-related research, impact and engagement activities if your research focuses on any of these themes. Applications close by 31 January.

Apply for the MRC Impact Acceleration Account

The Medical Research Council Impact Acceleration Account (MRC IAA) is now open for stage 1 applications. The MRC IAA validates the need for medical and healthcare technology to enable successful translation. Find out more about the application process and apply by 18 January.

Call for EUTOPIA Science and Innovation Fellowship applications

Providing two-year funding for early career researchers, apply for a chance to develop research at two co-hosting EUTOPIA universities, and a placement with an external partner institution. Materials engineering, data and intelligence, health, sustainability, and welfare and inclusion are the five areas of interest. Deadline 15 December 2022.

[Jacobs Foundation Research Fellowship Program](#)

Submission deadline: January 15, 2023, 23.59 CET

A Global Fellowship Program to Promote Research on Child and Youth Development

The Jacobs Foundation Research Fellowship Program is a globally competitive fellowship program for early and mid-career researchers whose work is dedicated to improving the learning and development of children and youth worldwide. The relevant disciplines include, but are not limited to, education sciences, psychology, economics, sociology, behavioral science, computer science, pedagogy, linguistics, neurosciences, and science of learning.

Particularly encouraged to apply are scholars who seek to combine multiple levels of analysis and engage in interdisciplinary work. A special focus lies on work to understand and embrace variability in learning; promote the generation, transfer, and practical application of evidence on human learning and development or increase the capacity to scale up effective education policies and practices.

The Jacobs Foundation is especially interested in the following questions:

- How do variations in individuals and contextual factors influence learning and development and learning outcomes?
- How can we design for learner variability at scale to enable all children to reach their potential as learners and in life?
- How can we produce interventions that reduce growing inequalities in children's learning and overcome disparities in the impacts of digital technologies?
- How can we address the role of data to help learners and teachers make informed decisions about their learning and teaching?

To find out more about the Jacobs Foundation Strategy 2030 please visit [Jacobs Foundation](#).

Fellowships are awarded to highly talented and innovative early and mid-career researchers who have received their PhD within the past 10 years. Funding from Jacobs Foundation Research Fellowships is awarded directly to the fellow's institution and may be used by the fellow over a three-year period to cover a portion of the fellow's salary and for any purpose in support of the fellow's research, such as assistants' salaries, equipment, technical assistance, professional travel, or trainee support.

The ideal fellow does not only have a great research idea but also a significant potential as a researcher to contribute as part of interdisciplinary teams within and beyond the network of the Jacobs Foundation. The application should include the broader ideas of the applicant as well as the research priorities during the Fellowship period. See eligibility and selection criteria [here](#).

Impact Opportunity

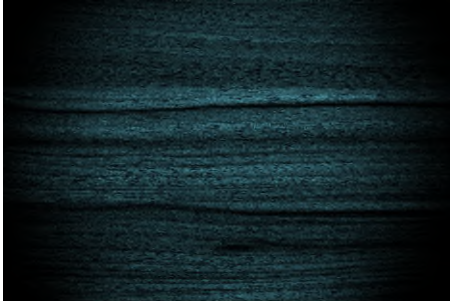
A workshop, held at the Palace of Westminster in London and delivered in conjunction with the Industry and Parliamentary Trust (IPT) and the Parliamentary Office for Science and Technology (POST), is now available to book online. Only those intending to attend should sign-up as places are strictly limited and available on a first come first serve basis. Contact: Dr Rob Hollingworth, RIS Manager

<https://warwick.ac.uk/services/lmd/research-active-staff/ras-dev-opportunities/research-impact-services/intro-to-parliament1-/>

The [Leverhulme Early Career Fellowship](#) scheme is running next year, with a submission date at the end of February: <https://www.leverhulme.ac.uk/early-career-fellowships>.

The department is allowed to support up to three applicants for this scheme, so if you know of anyone who is applying, please have them contact Professor Adam Sanborn by **9 January**.

Publications



National resilience in Ukraine following the 2022 Russian invasion

Goodwin, Robin (2022) National resilience in Ukraine following the 2022 Russian invasion. *International Journal of Disaster Risk Reduction*. (In Press)

11:05 Thurs 8 Dec 2022

Cortisol reactivity and negative affect among preterm infants at 12 months during a mother-infant interaction task

Moutinho, Vanessa, Baptista, Joana, Mesquita, Ana R., Wolke, Dieter, Toscano, Carolina, Moreira, Carla, Bernardo, Ana C. and Soares, Isabel (2023) Cortisol reactivity and negative affect among preterm infants at 12 months during a mother-infant interaction task. *Infant behavior & development*, 70 . p. 101784. doi:10.1016/j.infbeh.2022.101784

16:00, Wed 7 Dec 2022

The indirect effect of self-compassion in the association between autistic traits and anxiety/depression : a cross-sectional study in autistic and non-autistic adults

Galvin, John and Richards, Gareth (2022) The indirect effect of self-compassion in the association between autistic traits and anxiety/depression : a cross-sectional study in autistic and non-autistic adults. *Autism* . doi:10.1177/13623613221132109 (In Press)

15:52, Tue 6 Dec 2022

Syntax-like structures in maternal contact calls of Chestnut-Crowned Babblers (*Pomatostomus ruficeps*)

Spiess, Silvan, Mylne, Helen K., Engesser, Sabrina, Mine, Joseph G., O'Neill, Louis G., Russell, Andrew F. and Townsend, Simon W. (2022) Syntax-like structures in maternal contact calls of Chestnut-Crowned Babblers (*Pomatostomus ruficeps*). *International Journal of Primatology* . doi:10.1007/s10764-022-00332-9 (In Press)

15:19, Tue 6 Dec 2022

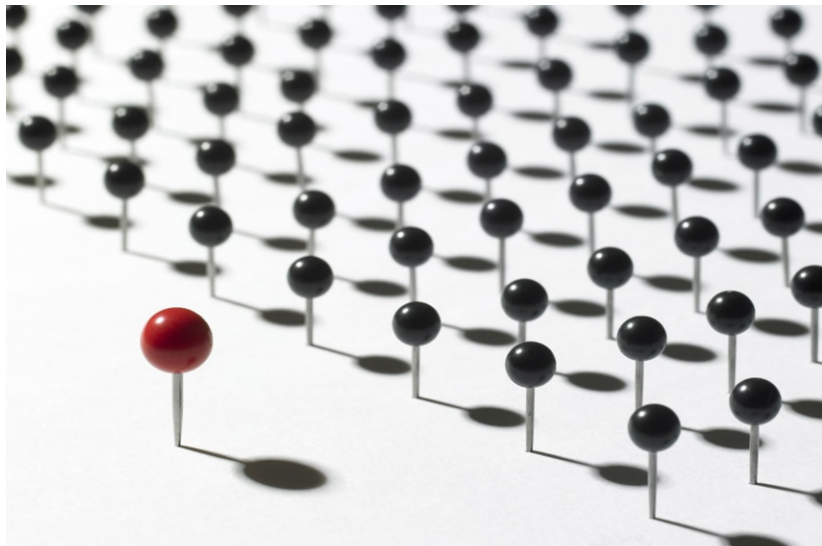
Vaccine hesitancy prospectively predicts nocebo side-effects following COVID-19 vaccination

Hoffman, Yaakov S. G., Levin, Yafit, Palgi, Yuval, Goodwin, Robin, Ben-Ezra, Menachem and Greenblatt-Kimron, Lee (2022) Vaccine hesitancy prospectively predicts nocebo side-effects following COVID-19 vaccination. *Scientific Reports*, 12 (1). 20018. doi:10.1038/s41598-022-21434-7

11:33, Tue 6 Dec 2022

[Your chance to become a WIE Fellow](#)

Warwick Institute of Engagement is on the hunt for new Fellows! Applications are open now - find out more and [apply by 6 January](#) if you're excited about all things engagement.



[Report and Support annual report](#)

We are committed to doing all we can to stamp out unacceptable behaviour in our community. We work in close partnership with students, staff and stakeholders to tackle the underlying issues, raise awareness of support and take action where necessary. Transparency is vital when it comes to better understanding these challenges, which is why we're releasing [this year's annual report](#) [Link opens in a new window](#) for our online disclosure platform Report and Support, following on from our first one in 2021.

[Nominate a technical colleague or team for national awards](#)

The national awards recognising technical excellence in academia, The Papin Prizes, are now open. Nominate a technical colleague or team for the awards, which will be presented at the Higher Education Technicians Summit here at Warwick in July next year. [View the categories and get your nominations](#) [Link opens in a new window](#) by 31 January 2023.

Sustainability

[Sustainability at Warwick Newsletter December 2022](#)



[Have your say on Warwickshire County Council's climate change plans](#)

In our region, Warwickshire County Council's new draft Sustainable Futures Strategy directly addresses the significant challenges of climate change and declining biodiversity, and you can take part in an online survey on the key themes that matter most to you. [Click here to read their Strategy and complete the survey.](#)

10 for £10 pass

If you're looking for a cost-effective way to stay active this December, Warwick Sport is offering staff a 10 day pass for just £10. The pass gives you full access to the gym, swimming pool, fitness classes, plus squash and badminton. Have a friend, colleague or family member who would benefit from our pass? Send them [the link](#) and they'll have instant access to the 10-day pass.

Alcohol and Drugs Policy updated

An updated Alcohol and Drugs Policy is now available, designed to make sure that individuals are aware of the risks associated with alcohol/drug misuse, and the potential consequences. [Find out more about the policy and see what support is available](#), including guidance for line managers.



New staff offers at Warwick Arts Centre

Warwick Arts Centre have added new events to their staff ticket offers. You can access 2 for 1 tickets across select live events including [Abigail's Party by Mike Leigh](#)[Link opens in a new window](#) and £7.50 reduced rate tickets on select films, including [The Silent Twins](#), starring Letitia Wright (Black Panther). Use code UW241STAFF for live events and UOWCINE22 for cinema. [Check out the full list here](#).

**Your Bulletin will be back at in Term 2.
Have a fabulous festive break!**

**Follow us on Instagram [WARWICKPSYCHOLOGY](#)
and [@warwickpsych](#) on **

