

[View this email in your browser](#)



20 January 2022



Email any items you'd like to see in future bulletins to Catherine c.j.johnstone@warwick.ac.uk

Psychology Bulletin

Updates on Term 2 working on are the staff intranet [here](#).

EVENTS



WATE Collaborative Awards 2022

The collaborative awards are presented to teams comprising of between 3 and 15 key members. Teams can be composed of colleagues from academic departments, professional services, and/or students. More details below about how to nominate. Nominations close **11 February**.



[Learn More](#)



[See Events pages of website for more ...](#)

Tuesday 25 January 14:00

[Subscribe](#)[Past Issues](#)[Translate](#) ▼

Research Jobs in Industry for Psychology PhDs

We welcome Dr Cai Guo to our PGR Careers seminar series! Dr Guo obtained his PhD at Stanford University and currently works for Goldman Sachs in the USA.

A research-based psychology PhD degree is not limited to academia but is in high demand in industry. This talk will feature a 10-15 min presentation on different types of jobs in industry that are particularly relevant for psych PhDs, followed by a discussion and Q&A section that provide a deep dive into various topics such as what it's like to have a research career in industry, how to prepare for a research job in industry, and the pros and cons of working in academia vs. industry.

[Sign up here](#)

*Psychology
Guest
Speaker
Series
2021/22*



External speakers: tomorrow

Tomorrow: Friday 21 January: 13:00

[Dr Antonia Krefeld-Schwalb](#)

[Rotterdam School of Management - Erasmus University](#)

“Ensembled Preferences”

[Subscribe](#)[Past Issues](#)[Translate ▼](#)

Host: Emmanouil Konstantinidis

Further seminars this term:

2 February **Alessandra Valentini**

16 February tba

2 March **Joseph Mine**

9 Feb - **Dr Richard Moore** and **Dr Katharina Helming**

23 Feb - **Hessah Alshaalan** and **Weize Zhao**

9 Mar - **Dr Nicholas Lange**

Language and Learning group Seminars:

Co-ordinator: [Marta Wesierska](#)

Bi-weekly programme on alternate weeks to Internal Seminar **12:00 Wednesdays**. Details published on Events calendar and TEAMS links circulated in advance of talks to Language and Learning Group members. If interested in joining the mailing list, contact Marta.

Further seminars this term:

2 February **Alessandra Valentini**

16 February tba

2 March **Joseph Mine**

WARWICK MIND AND ACTION

AUTOBIOGRAPHICAL MEMORY, VALUE, AND MORAL IDENTITY

2022

Contact: Daniel Vanello

- 12/01 **Fabrice Teroni (Philosophy; Geneva)**
- 26/01 **Deborah Laible (Psychology; Lehigh)**
- 02/02 **Robyn Fivush (Psychology; Emory)**
- 16/02 **Tobias Krettenauer (Psychology; Wilfrid Laurier University)**
- 23/02 **Marya Schechtman (Philosophy; Illinois at Chicago)**
- 09/03 **Matthew Soteriou (Philosophy; King's College)**
- 16/03 **Kristin H. Lagattuta (Psychology; UC Davis)**
- 23/03 **Christoph Hoerl (Philosophy; Warwick)**
- 27/04 **Shaun Nichols (Philosophy; Cornell)**
- 11/05 **Monisha Pasupathi (Psychology, University of Utah)**
- 18/05 **Carl Craver (Philosophy/Psychology; St. Louis, Washington)**
- 01/06 **Naomi Eilan (Philosophy; Warwick)**

For more details on the above seminars, email Daniel in Philosophy:
d.vanello.1@warwick.ac.uk

COMMUNITY SAFETY

If you're working late on campus make sure you look at the lone-working policy [here](#)

24 hour Control Centre (general enquiries) 22063 or 024765 22063

All calls requiring an external emergency service on campus should be made through the Control Centre on the emergency number.

Postdocs and Postgraduates



Aidan Tee joined Adam Sanborn's ESRC/NIESR 'Macroeconomic Implications of the Sampling Brain' ERC 'SAMPLING' on 1/5 2022 (full-time). **Sidney Sherborne** and **Noorin Rodenhurst** (PhDs) have secured RA posts - Sid on Gordon Brown's ERC Horizon 2020 project and Noorin working with Jagjeet Jutley-Neilson and Sotaro Kita on an Association of Heads of Psychology Department grant looking at "Awarding gap and experiences of BAME students in UK Psychology courses".

Two PhDs have joined us this term: **Elif Gönen**, supervisor: Dieter Wolke and **Andrea Velandia-Morales**, supervisor: Lukasz Walasek (visiting from the University of Granada, until mid-April).

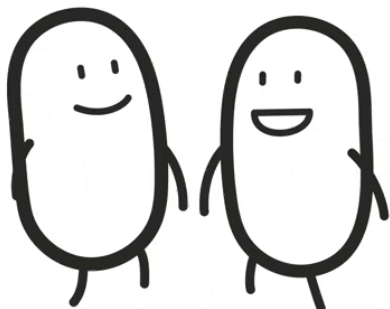
WATE 2022 FOR POSTGRADUATES WHO TEACH

Nominations for the WATE Postgraduates who teach Award (PGR) for all our wonderful GTAs are open. More details on how to nominate below. Closing date 11 February 2022



[Learn More](#)

Faculty PhD Thesis Prize 2022



Details of the scheme linked below (nominations open 31 January 2022 should be sent to PsychologyPG@warwick.ac.uk by 31 March).

[Learn More](#)

FY2022 JSPS Postdoctoral Fellowship Call

Japan Society for the Promotion of Science (JSPS) is the leading research funding agency in Japan, established by the Japanese Government for the purpose of contributing to the advancement of science. Our Postdoctoral Fellowship for Foreign Researchers (Standard) provides the opportunity for researchers based outside of Japan to conduct collaborative research activities with leading research groups at Japanese universities and research institutions for visits of between 12 to 24 months.

Applications for this fellowship should be submitted to The Royal Society as our nominating authority. Please visit this web page for further information:
<https://royalsociety.org/grants-schemes-awards/grants/jsp-s-postdoctoral>

Application deadlines: 15:00 Wednesday 9 March 2022

Career Award, Mid-Career Award, and Distinguished Leadership Award. Learn more about these awards and start making your list of scientists to nominate: psychonomic.org/page/awards.



Internal funding opportunity: Warwick Industry and Stake Holder Forum

Open to PhDs, Researchers and Academic staff

Complete [application form](#) by **Closing date 17:00 Friday 4 February 2022**.

Further advice and guidance is available via mark.bobe@warwick.ac.uk.

The funding for this round must be spent by 31st July 2022 and be between £1000 - £5000 per application

We have a budget available to enable applicants to be flexible in size and scope in what they propose to do. Examples could include virtual events such as conferences, video creation of facilities/capabilities for engagement purposes or indeed any another industry facing activity that will lead to recognisable impact. We are not being prescriptive regarding what can be applied for and are keen to see both traditional and more innovative approaches being brought forward. We are also welcoming applications from all career stages and functions including teaching staff, technicians, early career researchers, Professors etc. so that we maximise our outcomes. (Please note that line manager support may be needed in some instances)

Future event: Industry and Stake Holder Forum event **24 March 2022** [Registration](#) is open and [information](#).

The **Superb-Vision Network** is a new project that aims to bring together a diversity of doctoral students from different disciplinary backgrounds to share their supervision experiences: stories, challenges, successes and resources!

As doctoral students at Warwick, we are excited to be initiating such a network with the sponsorship of Warwick Doctoral College. Join us for a series of face to face and online networking events in term 2 to explore how to develop a productive relationship with your supervisor; what to do if something goes wrong; and what support is available. This is a great opportunity to connect with doctoral students from across the university and learn how to take a proactive, empowering stance in making your supervision superb!

Find out more about the network in this short video: tinyurl.com/superbvision-video

Please join our Teams page for more information and to ask any questions: tinyurl.com/superbvision

Bing Lu and Ben Sinclair, Education Studies

Superb-Vision Network Workshops (Term 2):

Week 1	
Week 2	<p>Workshop 1 (f2f) - Tues 18th Jan 1pm (Wolfson Research Exchange, seminar room 1 & 2, fortnightly) book here: https://skillsforge.warwick.ac.uk/warwick/#he/dev/eventDetails.em.providerCode=RD.providerOrgAlias=warwick.number=327;</p> <p>Networking - <i>How does your supervision help you build a network of support and stimulation?</i></p>
Week 3 (online)	<p>Tues 25th Jan, 5pm-Teams Meeting (Zoom in: supervision & networking)</p> <p>Teams link: https://tinyurl.com/SVN-networking</p>
Week 4	<p>Workshop 2 (f2f) - Tues 1st Feb 1pm (Wolfson Research Exchange, seminar room 1 & 2, fortnightly) book here: https://skillsforge.warwick.ac.uk/warwick/#he/dev/eventDetails.em.providerCode=RD.providerOrgAlias=warwick.number=328;</p> <p>Collaboration - <i>How does your supervision encourage you to work with others collaboratively?</i></p>
Week 5 (online)	<p>Tues 8th Feb, 5pm-Teams Meeting (Zoom in: supervision & collaboration)</p> <p>Teams link: https://tinyurl.com/SVN-collaboration</p>
Week 6	<p>Workshop 3 (f2f) - Tues 15th Feb 1pm (Wolfson Research Exchange, seminar room 1 & 2, fortnightly) book here: https://skillsforge.warwick.ac.uk/warwick/#he/dev/eventDetails.em.providerCode=RD.providerOrgAlias=warwick.number=329;</p> <p>Problem-solving - <i>How does your supervision prepare you to solve the problems during your doctoral study?</i></p>
Week 7 (online)	<p>Tues 22nd Feb, 5pm-Teams Meeting (Zoom in: supervision & Problem-solution)</p> <p>Teams link: https://tinyurl.com/SVN-problem-solving</p>
Week 8	<p>Workshop 4 (f2f) - Tues 1st Mar 1pm (Wolfson Research Exchange, seminar room 1 & 2, fortnightly) book here: https://skillsforge.warwick.ac.uk/warwick/#he/dev/eventDetails.em.providerCode=RD.providerOrgAlias=warwick.number=330;</p> <p>Self-reflection - <i>How does your supervision facilitate self-reflection as a doctoral student?</i></p>
Week 9 (online)	<p>Tues 8th Mar, 5pm-Teams Meeting (Zoom in: supervision & self-reflection)</p> <p>Teams link: https://tinyurl.com/SVN-self-reflection</p>

Opportunity for PGRs/PGTs/UGs on Nicole Tang's research project

Our research team is currently developing a novel psychological treatment with our NHS partners. We are looking for a digital content creator to work with our team, producing digital learning videos, infographics,

[Subscribe](#)[Past Issues](#)[Translate ▼](#)

part of their session! 🐣🐣



development and other applications in clinical settings.

[Apply here](#)

Academic Forum for the Study of Gambling announces 2 new student grant opportunities

Postgraduate Research Support Grants - available to PhD students and Postdoctoral Fellows to offset the costs of conducting research that directly or indirectly informs efforts to address gambling-related harm;

Student Travel/Conference Grants - available for Master's students, PhD students, and Postdoctoral Fellows to support registration and/or travel expenses to participate in conferences, workshops, training, courses, and other research-related activities.

[Information available from the AFSG](#)

TEACHING

[Personal Tutor training sessions](#), Wednesday 26 January 13:00 - 14:00

The Dean of Students Office is organising a series of online training sessions to support personal tutors in their roles. [Learn more about the topics and register now.](#)

[How Warwick is innovating in sustainability within education](#)

See how Warwick is an [innovator in sustainability within education](#) and get guidance on working to embed sustainable development in your teaching and learning, in a new practice guide from Dr Alastair Smith.

WATE FACULTY AWARDS

[Subscribe](#)

[Past Issues](#)

[Translate](#) ▼

have enabled excellent learning, creating the conditions within which all students are supported and empowered to succeed and thrive. Closing date 11 February 2022



[Learn More](#)

WATE Personal Tutoring Award



The Warwick Awards for Personal Tutoring Excellence (WAPTE) enable members of the Warwick community to recognise staff who have made an outstanding contribution to the support of students through the University's personal tutoring system. Details of how to nominate below. Closing date 11 February 2022

[Learn More](#)

WATE: Get involved!

As the WATE awards celebrate teaching which centres and gives students agency as learners we want to ensure that students are partners in these Awards.

We are looking to appoint student and staff judges for each step of the process.

Read more about the judging process and register your interest.

[Learn More](#)



News for your students

BPS Undergraduate Research Assistantship Scheme - 2022

The 2022 round of the Undergraduate Research Assistantship Scheme has now opened for applications, with a deadline of **7th March 2022**.

[Subscribe](#)[Past Issues](#)[Translate ▼](#)

Carl Bourton | Research and Impact Grants and Awards Administrator
St. Andrews House, 48 Princess Road East, Leicester, LE1 7DR
t: +44 (0)116 252 9917 m:
w: www.bps.org.uk

EPS Research bursary for students

Full details of scheme are [here](#). The department can only submit one application, so 200 word research proposals by students to [Adam Sanborn](#) (Director of Research) by **21 January** for internal selection process.

Summer School information to share

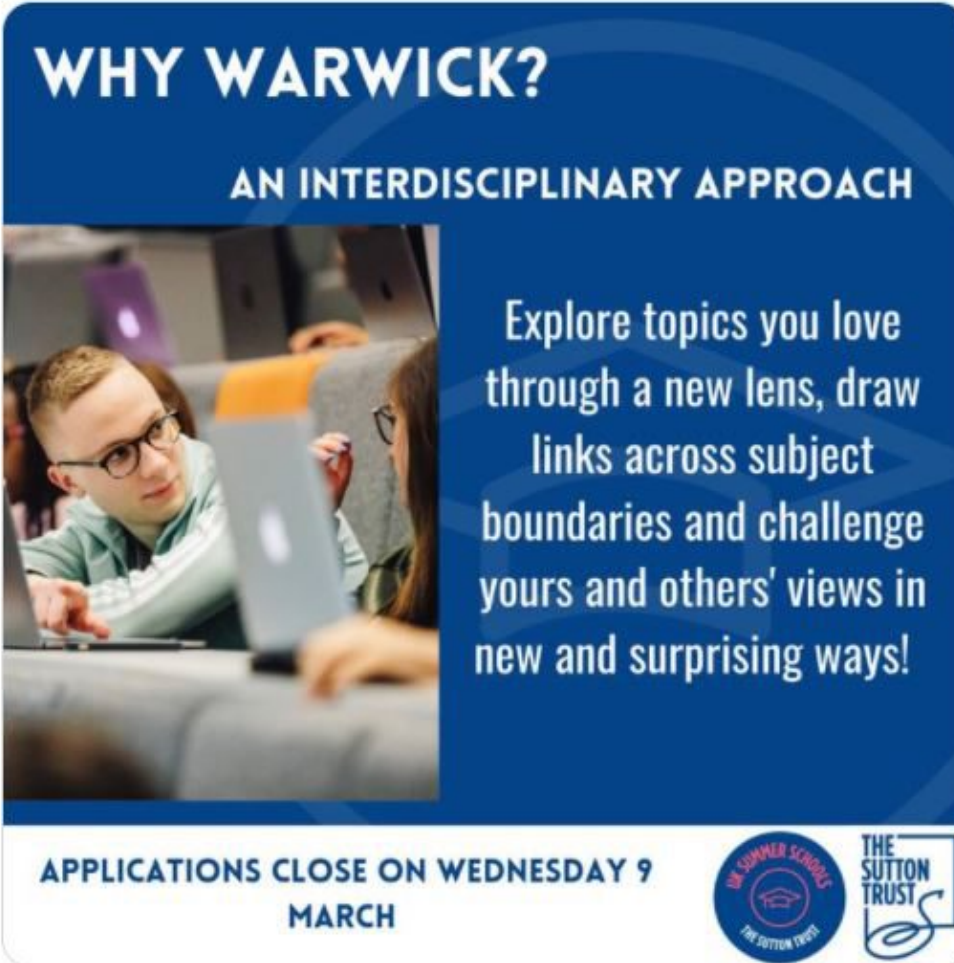
Our 2022 Warwick Summer School (WSS) and our Pre-University Summer School (PRESS) have launched. [Find out how you can get involved](#), including the discounts available for staff and students.

[Learn More](#)

[Subscribe](#)[Past Issues](#)[Translate](#) ▼

At our [@sutton_trust #summerschool](#), nearly all of our academic streams are collaborative & interdisciplinary!

•• Stay tuned to our social media channels over the next few weeks as we introduce our 6 subject streams:



WHY WARWICK?

AN INTERDISCIPLINARY APPROACH

Explore topics you love through a new lens, draw links across subject boundaries and challenge yours and others' views in new and surprising ways!

APPLICATIONS CLOSE ON WEDNESDAY 9 MARCH

UK SUMMER SCHOOLS THE SUTTON TRUST

THE SUTTON TRUST

RESEARCH AND IMPACT

Reminder

Inform Research Impact Services (RIS) if you are planning to submit a grant

If you are planning to submit a grant application soon, please let Research and Impact Services know well in advance of the deadline so that they can make sure everyone gets the support that they need.

You can do so by contacting [Andrea Howard](#) directly. Alternatively, if it is for a grant that would bring more than £50k to Psychology, you can register your plans at the department site (<https://warwick.ac.uk/fac/sci/psych/staffintranet/grants/>) as these submissions are also sent to RIS.

[Subscribe](#)[Past Issues](#)[Translate](#) ▼

[Mentoring research](#)

Learn about research conducted by the Behaviour, Brain and Society Global Research Priority into [work, wellbeing and human behaviour](#), some of the key areas that underpin the concept of mentoring. Find out more about the research themes. Those involved from Psychology include Thomas Hills, Lukasz Walasek, Michaela Gummerum (Inequality), Friederike Schlaghecken (Adaptability), Kim Wade (Policing)

Testing assumptions regarding potential behavioural responses during an emergency: Invitation to participate

Andrea Howard RIS has circulated via email details of a DSTL tender. Let Andrea know if you intend to apply. Projects anticipated to start 1.3.22.

More details [here](#).

Deadline: 3 February 2022



UKRI Survey [A survey](#) has been launched to gather feedback on Impact in **Research Applications**

Closing date **4 February 2022**

[Learn More](#)

[Research Software Engineering workshop. Turing Skills Team open call](#)



DEEPTech
Deep Tech Innovation Centre

Inspire every innovator...

i2i is for researchers from any subject area whose research can be applied to science, technology or engineering, including life sciences and healthcare.

Warwick i2i Programme

WARWICK INNOVATION DISTRICT
POWERED BY THE UNIVERSITY OF WARWICK

GENERATING IMPACT FROM YOUR RESEARCH

For early career researchers (PhD students and postdoctoral researchers, masters students.) The programme is open to life sciences, med school, psychology, business school, software designers and more.

ARE YOU INTERESTED IN:

- Enhancing impact from your research?
- Exploring creative applications for your research?
- Refining your communication skills?
- Identifying markets and opportunities?
- Considering first steps towards commercialisation?

PHOTO CREDIT: LUIS ROY REZINE

ONLINE WORKSHOPS:

Online workshops will be held on 19th, 21st, 26th, 28th January 2022.

You will also have the opportunity to explore the impact of your research by talking to potential partners and customers, with support and funding from Warwick Innovations.

Further information and registration:
<https://warwick.ac.uk/services/ventures/2academicscontact/warwicki2i>

Warwick Innovations | Junction Building | University of Warwick | Coventry | CV4 7AL | UK | T: 024 765 75234
E: tim.francis@warwick.ac.uk | www.warwick.ac.uk | www.deeptechinnovation.co.uk

The URSS programme this year will continue with Research projects + Public Engagement activities option started in 20-21, and also include a new URSS Public Engagement stand-alone project option to be conducted by staff and students. Professor Michael Scott, Director of Institute of Engagement.

See how you could get [support and resources for your work in or with culture](#). Themes include culture and community, creativity and connection, and transnational global humanities.

[Subscribe](#)[Past Issues](#)[Translate ▼](#)

ONE WEEK LEFT TO APPLY FOR OUR CREATIVE FUTURES INCUBATOR!

Pre-register on our system and apply now, along with your CV, Financial Forecast, and a 3-minute video about yourself and your business.

Apply here: warwickinnovationdistrict.com/creative-future...

Closing Date: 27th January, 5pm



20.1.22 Request from Student-led Education Research at Warwick Think-Tank looking to interview any academics in the department who may have knowledge of the cognitive and behavioural effects of censorship and interference in education upon student's social and education outcomes, as well as the perceptions and expectations of international students at Warwick who originate from countries with significant censorship in everyday life (China etc.). Email: [Dan Marks](mailto:Dan.Marks@warwick.ac.uk)

[HR for staff](#)

Remember to [record coronavirus absence in SuccessFactors](#) if you are self-isolating or have tested positive and let the [office](#) know.

[International travel guidance for all staff and PGR students](#)

[ED&I news](#)

[Disability Inclusion in Employment](#)

3:45pm - 4:45pm, Tue, 25 Jan '22 [Export as iCalendar](#)

Warwick is doing on disability equality and accessibility.

We will have presentations from Professor Kim Hoque (Warwick Business School) and Diane Lightfoot (CEO, [Business Disability Forum](#)) and a panel discussion chaired by Dr Jane Andrews (Chair of Warwick's [Disability Taskforce](#)) and including Jenny Wheeler (Chair of Warwick's [Disabled Staff Network](#)) and Karen Terry-Weymouth (Warwick's HR Strategy Director and [Senior Disability Champion](#) for recruitment and retention). The audience will have the opportunity to ask questions to find out more from the speakers.

All are welcome to attend - staff, students, and any members of the public interested in learning more about the DEC and what Warwick is doing in this area. Find out more [here](#)

Forum for Leaders of Inclusive Cultures - Diversity in Tech

Monday 7 February 2022, 11am - 12pm, Microsoft Teams Live Event.

Diversity is one of the biggest challenges facing the tech industry today. Based on the latest figures available, women made up only 19% of the UK IT industry, Black, Asian, and Minority Ethnic (BAME) people 15.2%, and disabled people 9%. Now more than ever we must drive solutions to diversity and inclusion in technology.

Join us for this free event where our panel will discuss their work and how organisations can build truly diverse and inclusive cultures in tech industries. All are welcome to attend - staff, students, and anyone outside Warwick interested in learning more about inclusive leadership.

Registration is required, [book your place here](#).

Advance HE @AdvanceHE · 2h
Our 2022 Equality Diversity and Inclusion Conference will include panel sessions discussing fostering good relations to uphold freedom of speech and building partnerships with activists for positive change. View the conference programme and find out more: bit.ly/3f9wZiu



WATE COMMUNITY

WATE Community and Culture is awarded to communities who work together to create, promote and sustain a culture which enables transformative education. People work together to build the conditions within which students and staff learn and thrive. Details on how to nominate below. Closing date 11 February.



[Learn More](#)

Warwick Awards for Public and Community Engagement (WAPCE)

 <p>Individual Award For any professional services or academic staff member (including all research and/or teaching focused and technician staff). There are 4 individual awards available. Each award is £1000.</p>	 <p>Student Award 2x UG and 2xPG awards worth £500 each. UG student award: current UG students and those who have recently left applying related to activities carried out in their final previous year of study. PG student award: current PGT, PGR and PhD students and those who have recently left applying related to activities carried out in their final previous year of study.</p>	 <p>Team Award For teams of 2-15 collaborators from across Professional Services and Academic staff and students of the University. Applicants involved in a Team award can also apply for an Individual award, but not for the same project. One team award is available. The award is £4000.</p>
---	---	---

The WAPCE awards in particular seek to recognise the vital contributions Warwick staff and students make in engaging the public – on an international and national level as well as crucially within our region and local communities – in our learning and discovery, with the goals of sharing and co-producing knowledge, strengthening the role we play in the region and showcasing the role Warwick plays nationally and internationally in making the world a better place. Closing date **1 March**

[Learn More](#)

The Pronouns pledge





New online course – Union Black: Britain's Black Culture and Steps to Anti-Racism

How can you get involved?

A free course designed by the Open University and Santander University.

Union Black is a six-hour short course that, as a member of staff at a UK university, you can access entirely free of charge. It will run twice a year between now and 2023 with start dates in September and January.

If you wish to access the course now and take part in Union Black's first run, you can register by [following these steps](#).

[Learn More](#)

Say My Name

[Find out more here](#)



Hear My Name Pilot

Feedback from the [Say My Name](#) project survey indicated that staff and students may benefit from the use of audio name badges (i.e., a sound clip of their name) in email signatures to help facilitate respectful interactions around names.

[Sign up here](#)

What are Organisational Development offering in term 2? Find out [here](#).



Warwick Researcher Development @warwickrssp · 21h

...

Researcher Development Online- Spring Programme is open for bookings. Including sessions from our Accelerator series, PhD in second language, perfecting your writing and much more.

All session bookable on SkillsForge:

tinyurl.com/3f75fjam



Warwick Doctoral College and Research Exchange

The Spring Festival of Careers is taking place this term including sector events, employer presentation, careers workshops and more. Take a look warwick.ac.uk/careersfestival #uowcareersfest



Wellbeing

Get 24/7 mental health and wellbeing support

Access [Togetherall](#), a safe place to talk, share and support others like you, available free to all staff and students. It's an anonymous community where you can express how you're feeling, get support and do courses at your own pace

Please reach out for support if you need it, either through your department or the [Employee Assistance Programme](#). You can also access self-help tools through the [Staff Wellbeing Hub](#) and [Wellbeing Support Services](#) (support for students).

Get some rest for your mental health

As we hit the middle of term, learn how to improve your rest and sleep. [Join the REST study](#), an initiative developed with the involvement of The Centre for Mental Health & Wellbeing and Productivity & Futures of Work GRP.

Green Matters

[Subscribe](#)[Past Issues](#)[Translate](#) ▼

ENVIRONMENTAL SUSTAINABILITY NEWSLETTER FOR
JANUARY IS [HERE](#).



Green Week22

If you'd like to run an event contact: The [Psychology Green team](#) or sustainability@warwick.ac.uk

[Learn More](#)

[Tree planting and biodiversity projects on campus](#)

See some of the ways we're [extending habitats](#) and [creating wildlife corridors](#), as part of our commitment to protecting, creating and enhancing spaces for biodiversity across campus.

[Subscribe](#)[Past Issues](#)[Translate](#) ▼

Get involved! Sign up to be a staff or student Green Champion and get involved with Green Week to help on campus, or volunteer with local organisations to help off campus! Get involved and help make a difference where you can!

[#sustainable2022](#)



Explore [how we can all use cleaner, greener ways to get to, from and across campus,](#) and discover [nine ways we are boosting energy efficiency on campus.](#)

Coventry City of Culture [update](#)

Latest event's announced [here](#)

From 11am-3pm tomorrow, our team will be in Broadgate to answer all your questions about becoming a City Host!

Sign up this weekend for the chance to win a £50 voucher for @MetropolisCov. Ts & Cs: bit.ly/cityhosts-term...



EnV (Coventry) C.I.C and 3 others



University of Warwick ✓ @warwickuni · 20h

Rana Begum's exhibition 'Dappled Light' is opening today at the newly renovated Mead Gallery at the @warwickarts ✨

Come see Begum's specially commissioned sculptures, paintings and installations from 13 Jan – 13 March! Free entry - find out more: bit.ly/3nkxhaG



[Subscribe](#)[Past Issues](#)[Translate](#) ▼

Warwick Arts Centre  @warwickarts · 32m ...

Nina Simone's uncompromising stance for social inclusion couldn't be more relevant today, and her legacy of songs have the capacity to speak to everyone.

Black Voices bring together talented musicians to champion one of their greatest inspirations.

bit.ly/3KvnE2G



Nicola Grant is collecting used stamps for the Bone Cancer Trust



Carefully cut the stamp from the envelope or package, leaving a 1cm border around the edge. Email [Nicky](#) when you have some ready!

LIBRARY

the main Library!

warwick.ac.uk/services/libra...

YOUR NEW CO-CREATION SPACE

WARWICK
THE LIBRARY

COMING SOON!

- A flexible space for staff and students to collaborate
- Bookable by staff and students, and available to students between bookings
- Equipped with resources including Lego, temporary whiteboard sheets, and group work digital screens
- Supported by guides on activities to facilitate co-design

#YourLibrary2022

The graphic features a red background with a white 'W' logo for Warwick The Library. Below the text is a photograph of a modern, colorful co-creation space with a wooden table and several bright, round stools in shades of green, orange, purple, and yellow.



[Subscribe](#)

[Past Issues](#)

[Translate](#) ▼

Our mailing address is:
*|c.j.johnstone@warwick.ac.uk|**|*

This email was sent to c.j.johnstone@warwick.ac.uk
[why did I get this?](#) [unsubscribe from this list](#) [update subscription preferences](#)
University of Warwick · Gibbet Hill Road · Coventry, West Midlands CV4 7AL · United Kingdom

Grow your business with  **mailchimp**