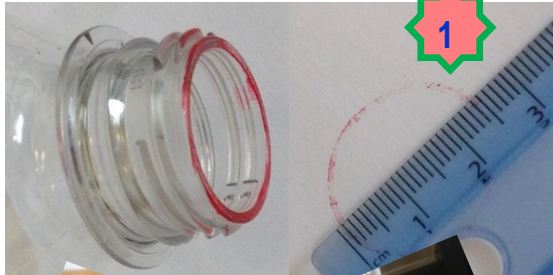
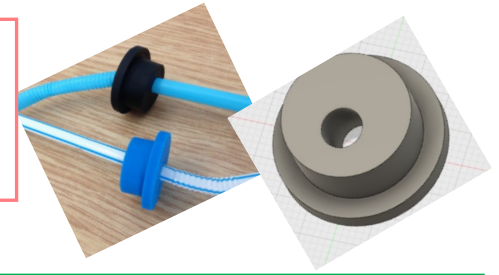




Straw bung for a bottle Measurement sheet

The straw bung consists of 2 cylinders with an angled hole cut through them for the straw. You need to measure the diameter of the outer and inner rim of the bottle top, so you can ensure your straw bung works.



1

To help measure the **outer** and **inner** bottle rim, you could use a marker pen to make an imprint of the bottle top. Or use callipers or a ruler on the top of the bottle.

You need to add 2mm to make the top cylinder so it sits on top of the bottle opening.

You need to subtract 2mm to make the bottom cylinder that it will fit inside the bottle top.



Write the bottle top measurements here:

Outer rim diameter _____ mm

Inner rim diameter _____ mm

Add on 2mm to get the cylinder diameters for the straw bung.

Outer cylinder diameter _____ mm

Inner cylinder diameter _____ mm



2

Measure the straw

Measure the diameter of the straw you want to use with the straw bung. Either use a ruler as show here, or you can use callipers.

You will need to add on around 2mm to this diameter to get the diameter of the hole you need to make in the straw bung.

Note: tolerances vary on different 3D printers, so you may need to add a different amount on to your straw diameter for your printer to produce the correct hole size. Adding 2mm works on the UP Mini 3D printer.

Write the measurements here:

Straw diameter _____ mm

Add on 2mm for diameter of the straw hole

Straw hole diameter _____ mm