

EDUCATION STUDIES ENCOURAGES YOU TO

# EXPLORE

THE PURPOSE OF EDUCATION AND ITS

# IMPACT

ON THE WORLD AND ABILITY TO INFLUENCE AND CREATE

# CHANGE



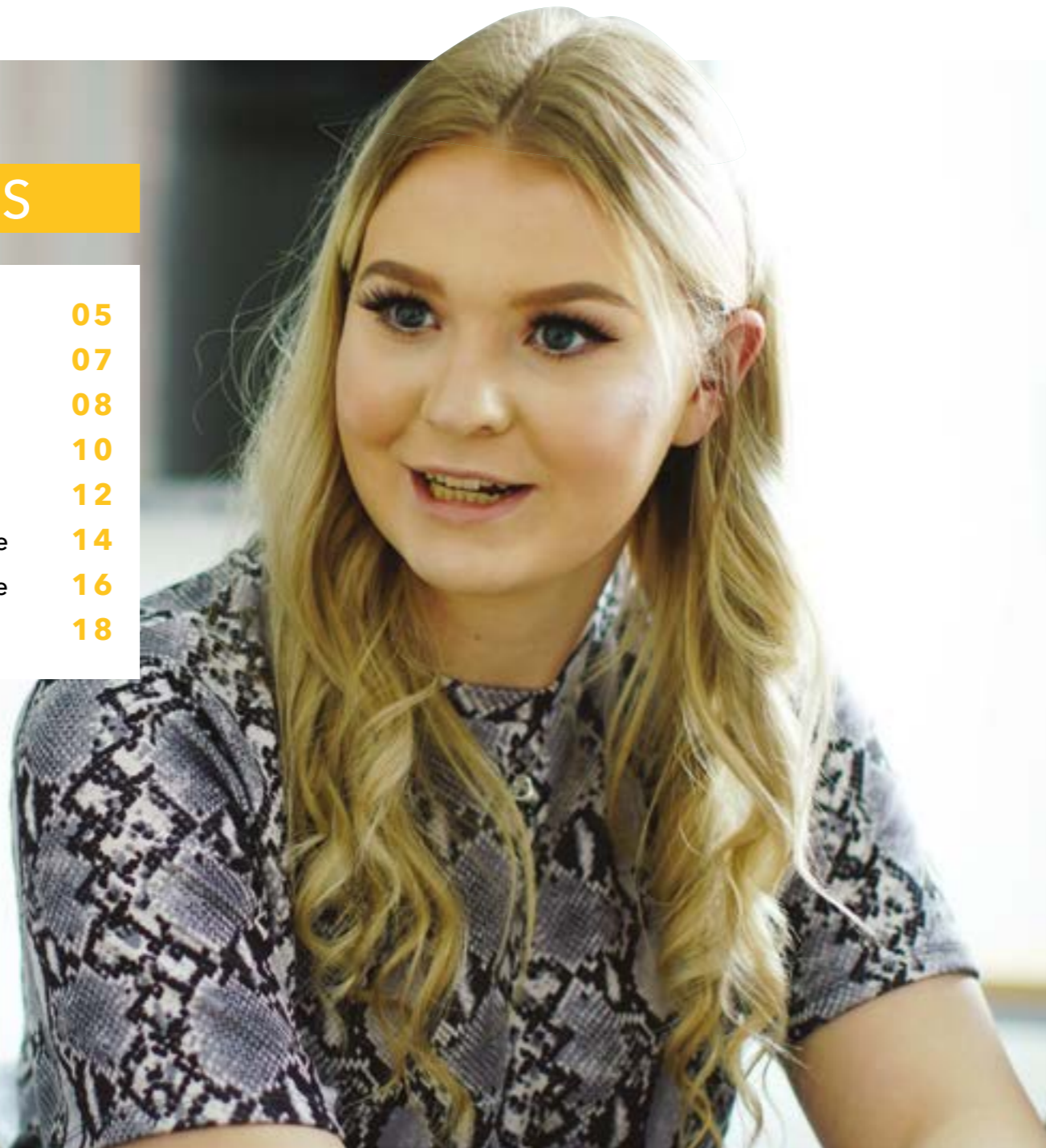
EDUCATION  
STUDIES

UNDERGRADUATE STUDIES 2022/23

  
**WARWICK**  
THE UNIVERSITY OF WARWICK

# TABLE OF CONTENTS

The Power of Education	05
Pathways	07
First Year	08
Second and Third Year	10
Optional Modules	12
International Experience	14
Thinking For Your Future	16
Useful Links	18



# THE POWER OF EDUCATION

TAKE THE CHANCE TO **DEVELOP** YOUR FASCINATION FOR HOW WE LEARN, YOUR **PASSION** FOR SOCIAL JUSTICE, AND YOUR **INTEREST** IN CREATIVE EDUCATIONAL APPROACHES.

An Education Studies degree at Warwick will give you a deeper understanding of education as a diverse field of study and an appreciation of its truly transformative power.

You'll develop a view of education that's critical, contemporary and international. You will draw on and develop a range of vital skills - such as flexibility, curiosity and reflection - as you encounter and work with a variety of perspectives on education.

Engage with thinking from psychology and philosophy as you study how and why we learn. Look to sociology and literature to understand the position and representation of young people in culture and society. Consider political debates as you analyse how education is shaped by, and informs, current affairs. By taking this multi-faceted approach, you'll find new ways to understand and affect the

lives of people in the local area and communities further afield.

Our department is an ideal size for us to get to know you, to closely guide your academic, personal and professional development, and to inspire you through the research-based approach that underpins our teaching. You'll be alongside fellow students and academic staff who are down-to-earth, supportive and intellectually-engaged, making for a strong sense of community, belonging and purpose.

Whatever route you've taken to arrive at Warwick, you'll find the Education Studies department is a welcoming place for you to explore your passion for education, and to follow a path that's distinctive to you. You'll revel in a life-changing learning experience at Warwick that maximises your potential to follow a range of dynamic, fulfilling and transformative career routes.

“My first interaction with the department was wonderful, all members of staff were incredibly welcoming making me feel comfortable during this huge life change.”

Eden, Third Year

DEVELOP YOUR OWN INTERESTS WITH A DEGREE THAT IS

**FLEXIBLE**

## PATHWAYS

AN IMPORTANT PART OF THIS DEGREE IS ITS **FLEXIBILITY**, WHICH ALLOWS YOU TO FOLLOW AND DEVELOP YOUR OWN INTERESTS. YOU CAN CHOOSE TO FOLLOW A GENERAL PATHWAY OR BEGIN TO SPECIALISE BY TAKING MODULES THAT REFLECT YOUR PARTICULAR **PASSIONS** AND **CAREER ASPIRATIONS**.

### PSYCHOLOGY AND LEARNING

With an emphasis on how psychological theory is interpreted in educational policy and practices, this pathway supports students in exploring two fundamental questions: ‘How do human beings learn?’ and, ‘What teaching and learning practices can help learners overcome barriers to learning?’.

This pathway is especially relevant for students who see themselves in careers where the learning process and individual development are fundamental concerns, such as in counselling, educational psychology or teaching.

### SOCIETY AND POLICY

This pathway focuses on the social impacts of conceiving education according to particular political and theoretical ideologies.

It explores questions such as: ‘How fair is education today?’, ‘To what extent are global narratives affecting local schooling?’ and ‘Are educational inequalities increasing or decreasing?’ Students who wish to pursue a career that involves local, national or international policy would find the focus of this pathway especially relevant, for example in roles within educational charities, NGOs and government agencies. The issues addressed by this pathway are also pertinent for those wanting to go into community and outreach work, as well as teaching and educational leadership.

### CULTURE AND CREATIVITY

This pathway explores the concept of ‘learning cultures’ and the role of creativity in education.

It looks at how things like people’s faith-based and cultural practices impact on how they develop different forms of learning practices in contrasting educational contexts. It asks about the meaning and use of creative approaches to teaching and learning. As such, the pathway would support routes into careers involving community and faith-based work, youth organisations, arts programmes, theatres and museums, as well as teaching roles.

# FIRST YEAR

IN YOUR FIRST YEAR YOU WILL TAKE **EIGHT CORE MODULES**, GIVING YOU A **FIRM FOUNDATION** IN THE VARIED STUDY OF EDUCATION AND INTRODUCING YOU TO THE INTER-RELATED THEMES OF OUR PATHWAYS.

The modules cover historical and contemporary debates, research and theories to do with learning, policy, and social and cultural issues. They encourage critical thinking and develop your academic skills, with a focus on supporting your first steps within this academic discipline.

## EDUCATION TODAY

What are the contemporary issues and entrenched concerns in education today? What are the narratives dominating educational debates at this stage of the 21st century? What forms of educational practice and policy can be seen to be increasing social justice and which perpetuate injustices? What should be taught in our schools? Launching into the big questions, expect a module full of debate, investigation and controversy!

## FOUNDATIONS FOR LEARNING: THE EARLY YEARS

Experiences encountered in the early years of life and at the start of the learning and development journey can have a lasting impact upon the individual. We consider what this means in terms of early childhood care and education.

## INTERNATIONAL EDUCATION

This module will explore models and concepts relating to education at a global level. You'll examine themes and trends that cut across geographical and national boundaries. We'll look at globalisation and children's rights to education, the Millennium Development Goals, and the marketisation of schooling and higher education. The module explores how factors such as ideology, culture and economics impact on education.

## SOCIAL CONTEXTS OF CHILDHOOD AND EDUCATION

This module discusses the ways in which childhood, education and schooling are perceived in different social contexts. Throughout the module you will explore a number of arenas through which children are nurtured, protected and socialised, including family, peer group and the virtual world of the mass media and digital technology, considering historical and contemporary developments. We also critically analyse the impact of class, poverty, gender and ethnicity on education and childhood.

## THEORIES OF LEARNING

You will examine various theories outlining how human beings learn. The module covers leading child development theorists' perspectives on learning in the early years (such as Jean Piaget and Lev Vygotsky) as well as the work of theorists who explore learning from the perspective of older children, young people and adults. You'll acquire the tools for evaluating the strengths and weaknesses of contrasting theories, whilst gaining insight into the relationship between social values, culture and theories of learning.

## CREATIVITY, CULTURE AND LEARNING

Rather than simply advocating the creative agenda, this module invites you to take a critical and reflective view on what creativity, creative teaching and creative learning are. As part of this we explore how these concepts can be seen to have evolved within contrasting educational, political and economic frameworks.

## ACADEMIC IDENTITY AND SKILLS

This reflective and practical module allows you to explore your preferred ways of learning. Through considering the academic standards, assessment methods and teaching and learning practices used in Higher Education this module will support you to develop an informed, personalised and critical approach to academic scholarship.

## INTRODUCTION TO THE PHILOSOPHY OF EDUCATION

What is philosophy? What does a philosophical question about education look like? What role has philosophical thought historically played in shaping education? Can teaching and learning be effective if there is not a philosophical element to it?

This module will provide an introductory starting point for wrestling with these questions and explore the teaching of philosophy with primary aged pupils in a local school setting.



## SECOND AND THIRD YEAR

IN YOUR SECOND AND THIRD YEAR YOU WILL STUDY A **SELECTION** OF CORE MODULES. THESE INCLUDE:

### PROFESSIONAL IDENTITY AND SKILLS: WORK-BASED PLACEMENT

This module gives you the opportunity to hone your professional skills and career aspirations through an education-based work-placement. In taught sessions you will explore the professional characteristics of organisations that work with children, young people and their families in an educational capacity. This will include investigating the staffing and leadership structures, their policies, their modes of work, professional roles and conduct. In addition, the role of reflective practice in professional development will be examined from both theoretical and practical angles. Placement partners consist of organisations that deliver both formal and informal education in a variety of contexts (i.e. schools, hospitals, charities, children's centres, sports organisations, youth theatres).

### GLOBALISATION AND EDUCATION

Exploring the global spread of mass education, you'll analyse the political and economic dimensions of globalisation in relation to education. Despite being a key focus of global educational policy in recent

years, across the world, 14% of the world's population remains illiterate. Core themes explored on the module include: children's human rights, the impacts of poverty, global diversity, localised responses to poverty and educational inequality.

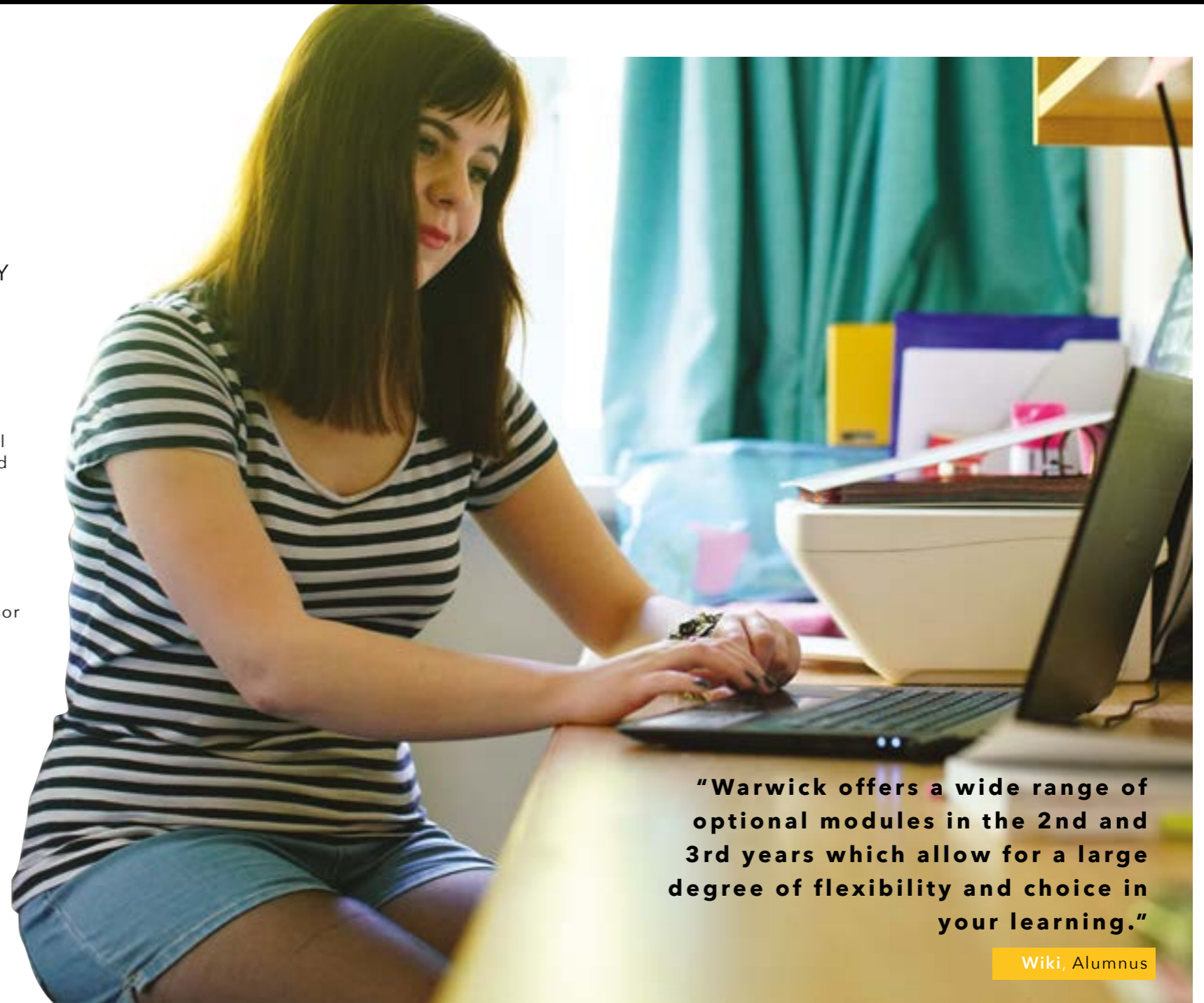
### INDIVIDUAL RESEARCH PROJECT

This is our third year dissertation module. Here you will get the chance to devise, manage and write up your own research project, supported by an academic supervisor from within the department with whom you will have regular one-to-one tutorial meetings throughout your third year.

Your project can relate to your chosen pathway focus, giving you a chance to draw together what you have learnt on your previous modules and really focus on your own passions as a new educational researcher!

#### Other core modules include:

- Research Methods
- Policies and Politics of the English Education System



**“Warwick offers a wide range of optional modules in the 2nd and 3rd years which allow for a large degree of flexibility and choice in your learning.”**

Wiki, Alumnus

# OPTIONAL MODULES

**CHOICES INCLUDE:**

- Masculinities, Fatherhood and Young Children
- Social Theory and Education
- 21st Century Educational Innovation
- The Developing Child in the School Context
- Arts Based Learning in Education
- Philosophy of Education
- Education, Race and Ethnicity: Inequalities in Europe

Not all optional modules run every year

You'll understand the implications of educational research and the way it **shapes** policy and practice.

## EDUCATION AND SOCIAL JUSTICE

By the age of three, poorer children are estimated to be, on average, nine months behind children from more wealthy backgrounds. Meanwhile, the increase in university fees means that a 'better' education is unachievable for those who cannot afford it. Through analysing current and historical educational policy and practice, you'll create and critique ideas that could reduce educational inequalities and, possibly, make society fairer.

## INTRODUCTION TO SPECIAL EDUCATIONAL NEEDS AND DISABILITY

You'll develop a good knowledge and understanding of areas of need such as specific learning difficulties, language difficulties and those associated with the autistic spectrum. You'll understand the implications of educational research and the way it shapes policy and practice. This module will highlight the importance of early diagnosis and intervention, and you'll explore the notions of working with parents and other professionals.

## CHILDREN'S LITERATURE IN CHILDHOOD

Well-loved childhood books and stories can play a role in a child's psychological, social and cultural development, but to what extent? Looking at the kinds of literature available to children and young people today, how does this vary from the texts that were available to previous generations? How are the child protagonists portrayed in popular children's books? What does their portrayal suggest about how childhood is perceived in society?

# INTERNATIONAL EXPERIENCE

YOU'LL ADD ANOTHER **DIMENSION** TO YOUR LEARNING BY SPENDING TIME **OVERSEAS**. IT'S THE BEST WAY TO GAIN **FIRST-HAND EXPERIENCE** OF WHAT GLOBAL EDUCATION REALLY MEANS.

As part of your degree you can choose either a 13 week placement abroad or a full intercalated year (your third year modules would be completed in your fourth year). Your third year could be spent at one of our partner universities:

- **Dronning Mauds Minne Høgskole in Trondheim, Norway**
- **University of Borås, Sweden**
- **Maria Ulrich College of Early Childhood Education, Portugal**
- **Monash University in Melbourne, Australia**

A year abroad won't count towards your final degree mark, but that experience will count when you're exploring career opportunities after graduation. Find out more at [warwick.ac.uk/study/studyabroad](http://warwick.ac.uk/study/studyabroad)

*"During the work based placement I was hoping to gain an insight into what it is like to teach in an alternative education setting. Each day in the setting was different due to the uncertainty of children being discharged from and admitted into hospital. In this sense I wanted to understand the challenges this brings to teaching in a hospital school."*

Lauren, Alumnus



THE UNIVERSITY OF WARWICK IS RANKED

# 1<sup>ST</sup> IN THE UK

FOR STUDENT SATISFACTION\*

\*EDUCATION - SUBJECT LEAGUE TABLE 2022, COMPLETE UNIVERISTY GUIDE

# THINKING FOR YOUR FUTURE

AT EVERY STAGE OF YOUR DEGREE, YOU'LL **DEVELOP SKILLS AND EXPERIENCES** TO **PREPARE** YOU AND GUIDE YOU FOR LIFE - INCLUDING THE CAREER PATH YOU TAKE.

You'll advance your communication skills, and become adept at assimilating and analysing data and research. You'll expand on your abilities to work independently and as part of a team, and become accustomed to working to agreed deadlines.

We encourage our students to approach challenges with an open mind, having the capacity to solve problems. You'll be equipped with the knowledge and understanding of different factors that impact on individuals and groups in society.

## WORK BASED PLACEMENT

This degree also gives you the opportunity to experience education practice in real-world settings through an international or UK-based placement. This includes schools, party parliamentary groups, charities, early years settings, healthcare and youth services.

"Overall, the placement was really worthwhile as I was able to gain experience in teaching and working with children. It was also worthwhile exploring the challenges that schools and teachers face day to day. At this stage, I am able to reflect on these experiences and consider how I can progress and develop on a personal level so that hopefully in the future I will be able to become a great teacher!"

Charlotte, Alumnus



## ENTRY REQUIREMENTS

**A LEVEL:** ABB

**BTEC:** Three Distinctions in a BTEC Level 3 Extended Diploma in a relevant subject

**INTERNATIONAL BACCALAUREATE:** 34 points

**BTEC:** DDD in a BTEC Level 3 Extended Diploma or National Extended Diploma in a relevant subject.

We also welcome applicants taking combinations of A level and BTEC qualifications.

## ACCESS COURSES

Access to HE Diploma (QAA recognised) including appropriate subjects with distinction grades in level 3 units. Candidates must meet essential subject requirements.

## INTERNATIONAL FOUNDATION PROGRAMME (IFP)

All students who successfully complete the Warwick IFP and apply to Warwick through UCAS will receive a guaranteed offer for a related undergraduate programme.

## OTHER QUALIFICATIONS

We welcome applications from students with other internationally recognised qualifications.

## VISIT US

If you would like to visit us at a time and date that suits you, we would be delighted to personally show you around and meet with our current students and members of academic staff. If so, contact us via email [educationundergrad@warwick.ac.uk](mailto:educationundergrad@warwick.ac.uk)



## HOW TO APPLY

Applications are made through UCAS [ucas.com](https://ucas.com)

If you are made and accept an offer, and meet any outstanding conditions, we will confirm your place and look forward to warmly welcoming you at the start of your life here at Warwick.

For more detailed information about how we process applications please visit: [warwick.ac.uk/study/undergraduate/apply](https://warwick.ac.uk/study/undergraduate/apply)

## OVERSEAS APPLICANTS

At Warwick, we welcome applications from across the globe, and have dedicated teams available to advise and support, as well as a global network of Agents and Representatives. For more information on applying from your country see: [warwick.ac.uk/io](https://warwick.ac.uk/io)

Disclaimer: This course information was accurate at the time of publication (August, 2021). While the University tries to ensure that the information is accurate, it does not warrant that this is the case. The University may need to make changes including to the course content, syllabus, delivery, methods of assessment, or to comply with external accrediting or reviewing bodies. It is therefore important that you revisit the relevant course website before you apply and when you accept an offer to ensure you are viewing the most up to date information. This information should not be construed as an offer and nor does it create a contract or other legally binding relationship between the University and you or a third party. For full terms and conditions, please visit [warwick.ac.uk/ugtermsandconditions](https://warwick.ac.uk/ugtermsandconditions)

## STUDENT FEES AND FUNDING

We want to ensure that, wherever possible, financial circumstances do not become a barrier to studying at Warwick. We provide extra financial support for qualifying students from lower income families.

[warwick.ac.uk/studentfunding](https://warwick.ac.uk/studentfunding)

## ACCOMMODATION

We believe that where you live underpins your University experience. Warwick Accommodation manages around 7000 self-catering residences on campus. At Warwick, you'll enjoy the freedom of independent living alongside your fellow students but with the security of knowing you're surrounded by people who can support you should you need it. For more information visit

[warwick.ac.uk/accommodation](https://warwick.ac.uk/accommodation)

## DISCOVER MORE

To find out more about the University, including opportunities to visit and engage with your department of choice, visit

[warwick.ac.uk/undergraduate/visits](https://warwick.ac.uk/undergraduate/visits)

